

# Natural Resource Inventory

## Town of Bedford

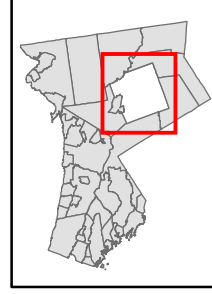
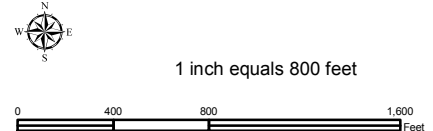
Map # E11

### TILE INDEX

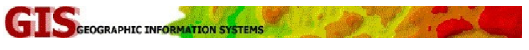
D10	D11	D12	D13	D14	D15
E10	E11	E12	E13	E14	E15
F10	F11	F12	F13	F14	F15
G10	G11	G12	G13	G14	G15
H10	H11	H12	H13	H14	H15
I10	I11	I12	I13	I14	I15

### Legend

- 10' TOPO
- 50' TOPO
- Streams
- Lakes, Ponds or Reservoirs
- Aquifer
- Drainage Divides
- Hydric Soils
- Municipal Boundaries
- Tax Parcels
- Buildings
- Slope**
  - 15% - 25%
  - 25% and Over
- NYSDEC Wetlands**
  - Greater than 12.4 acres
  - Less than 12.4 acres
- Floodplains**
  - 100
  - 500
- National Wetlands Inventory

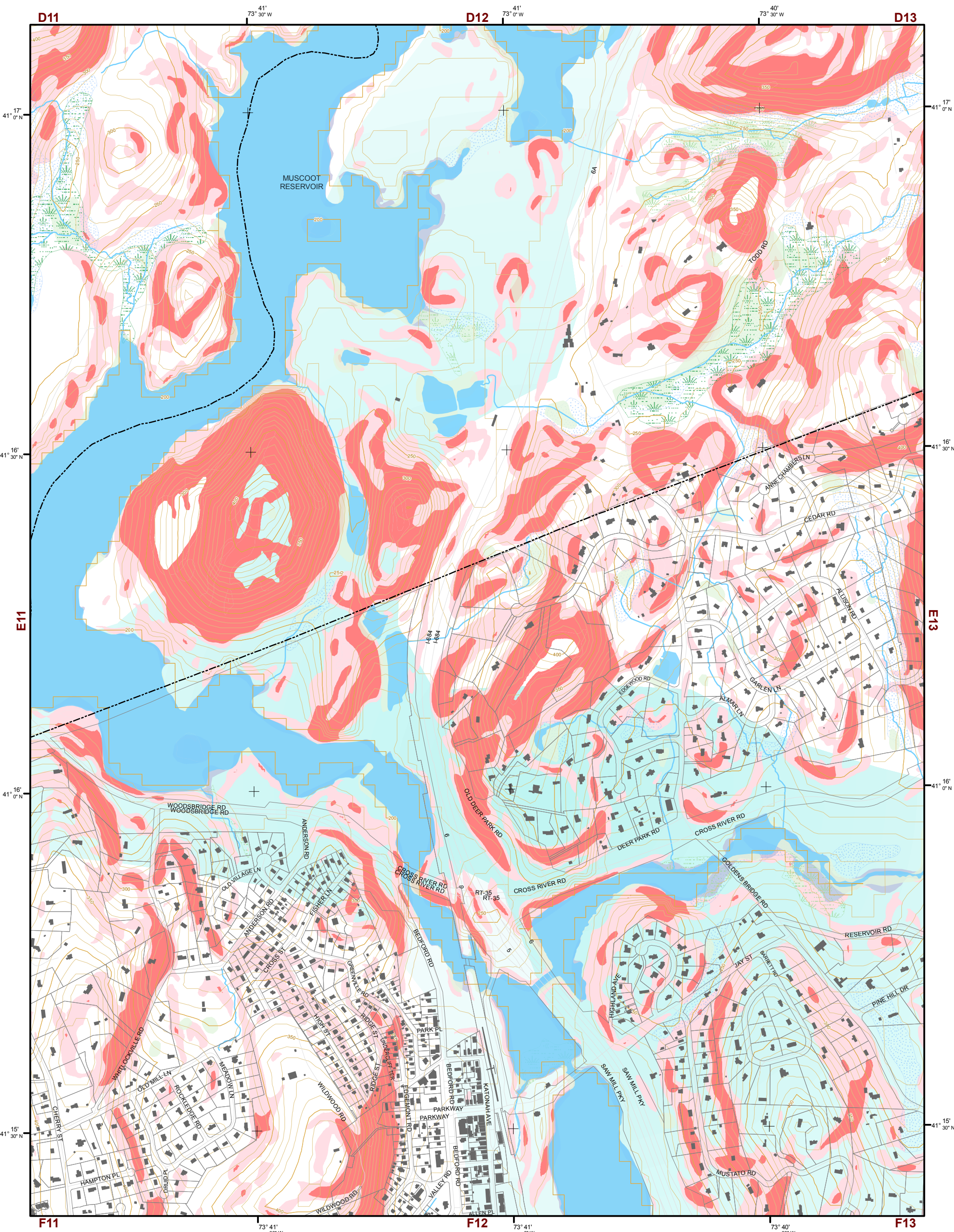


This map is for general information only and should not be used for site specific planning. Data was collected from a wide range of local, state, and federal GIS databases "as is." Westchester County assumes no liability to any party for any loss or damage caused by errors or omissions resulting from negligence, accident or any other cause.



Westchester County Board of Legislators  
Andrew J. Span, Westchester County Executive



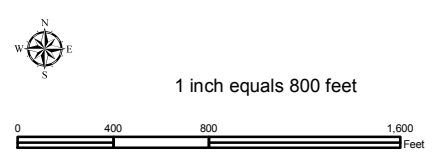
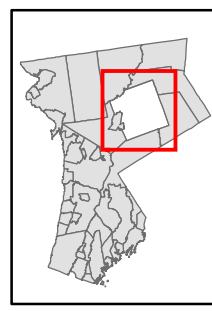


# Natural Resource Inventory

## Town of Bedford

Map # E12

TILE INDEX



**Legend**

- 10' TOPO
- 50' TOPO
- Streams
- Lakes, Ponds or Reservoirs
- Aquifer
- Drainage Divides
- Hydric Soils
- Municipal Boundaries
- Tax Parcels
- Buildings
- Slope 15% - 25%
- Slope 25% and Over
- National Wetlands Inventory

- NYSDEC Wetlands Greater than 12.4 acres
- NYSDEC Wetlands Less than 12.4 acres
- Floodplains 100
- Floodplains 500

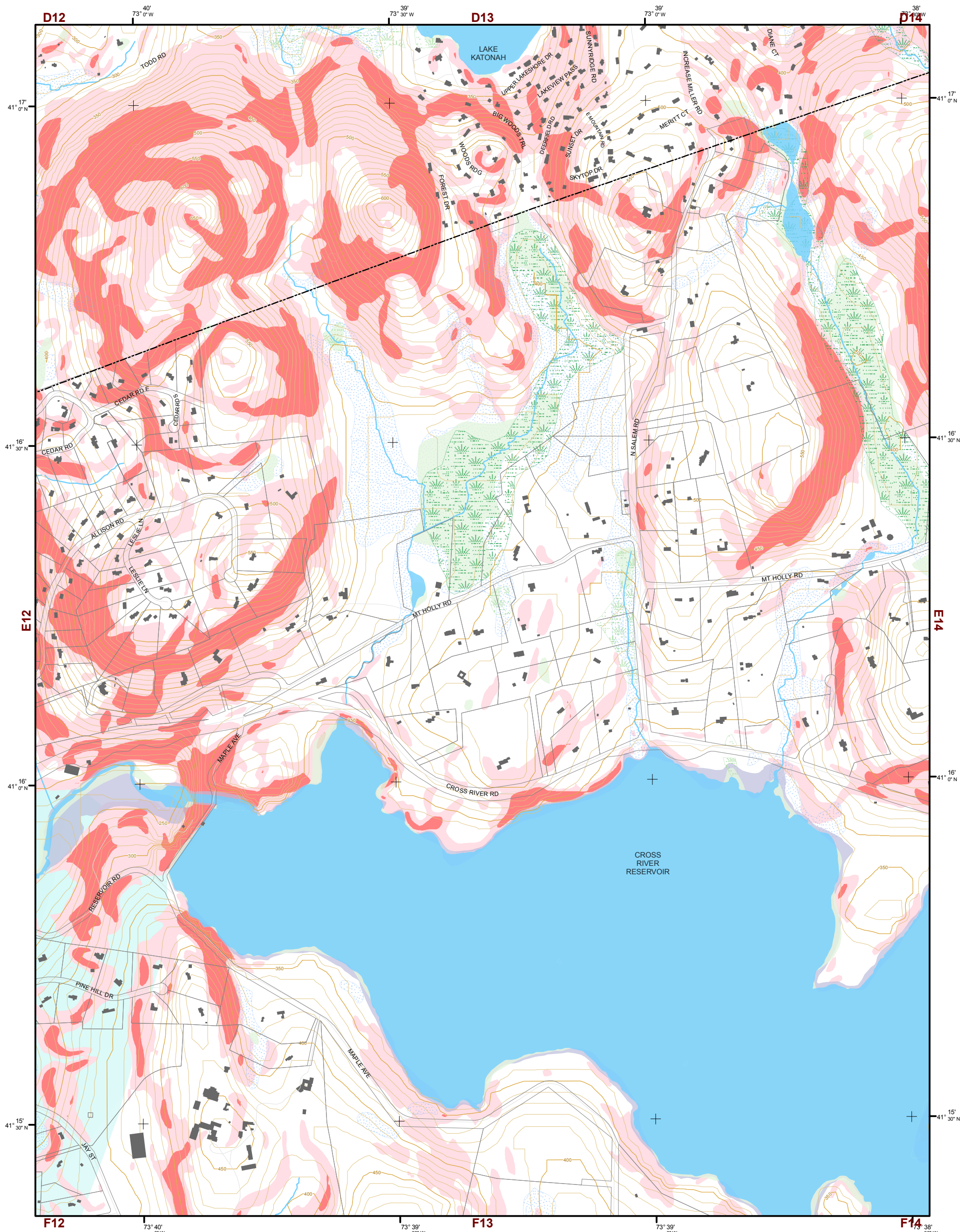
D10	D11	D12	D13	D14	D15
E10	E11	E12	E13	E14	E15
F10	F11	F12	F13	F14	F15
G10	G11	G12	G13	G14	G15
H10	H11	H12	H13	H14	H15
I10	I11	I12	I13	I14	I15

This map is for general information only and should not be used for site specific planning. Data was collected from a wide range of local, state, and federal GIS databases "as is." Westchester County assumes no liability to any party for any loss or damage caused by errors or omissions resulting from negligence, accident or any other cause.



Westchester County Board of Legislators  
Andrew J. Span, Westchester County Executive

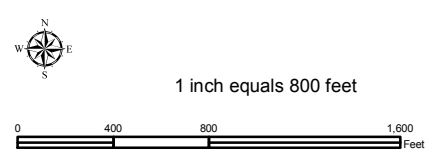
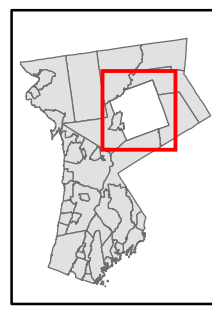




# Natural Resource Inventory

## Town of Bedford

Map # E13



### Legend

- 10' TOPO
- 50' TOPO
- Streams
- Lakes, Ponds or Reservoirs
- Aquifer
- Drainage Divides
- Hydric Soils
- Municipal Boundaries
- Tax Parcels
- Buildings
- Slope**
- 15% - 25%
- 25% and Over
- NYSDEC Wetlands**
- Greater than 12.4 acres
- Less than 12.4 acres
- Floodplains**
- 100
- 500
- National Wetlands Inventory

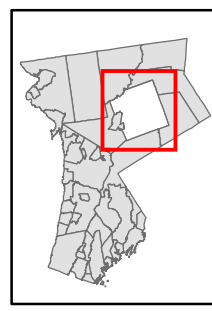
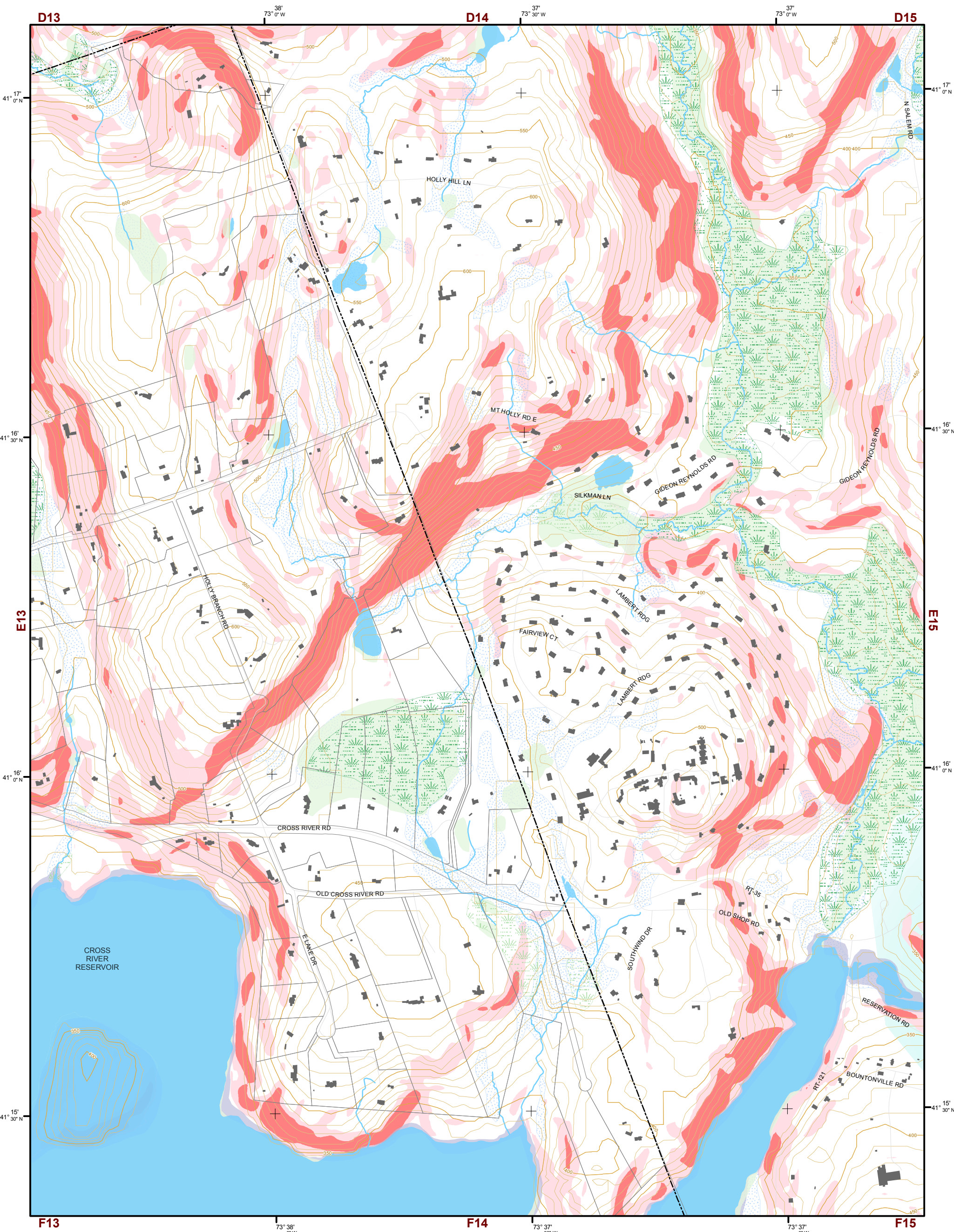
### TILE INDEX

D10	D11	D12	D13	D14	D15
E10	E11	E12	E13	E14	E15
F10	F11	F12	F13	F14	F15
G10	G11	G12	G13	G14	G15
H10	H11	H12	H13	H14	H15
I10	I11	I12	I13	I14	I15

This map is for general information only and should not be used for site specific planning. Data was collected from a wide range of local, state, and federal GIS databases "as is." Westchester County assumes no liability to any party for any loss or damage caused by errors or omissions resulting from negligence, accident or any other cause.





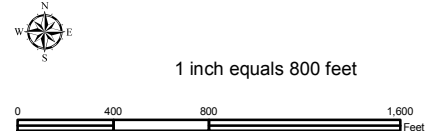


# Natural Resource Inventory

## Town of Bedford

Map # E14

TILE INDEX



**Legend**

- 10' TOPO
- 50' TOPO
- Streams
- Lakes, Ponds or Reservoirs
- Aquifer
- Drainage Divides
- Hydric Soils
- Municipal Boundaries
- Tax Parcels
- Buildings
- Slope**
- 15% - 25%
- 25% and Over
- National Wetlands Inventory

- NYSDEC Wetlands**
- Greater than 12.4 acres
- Less than 12.4 acres
- Floodplains**
- 100
- 500

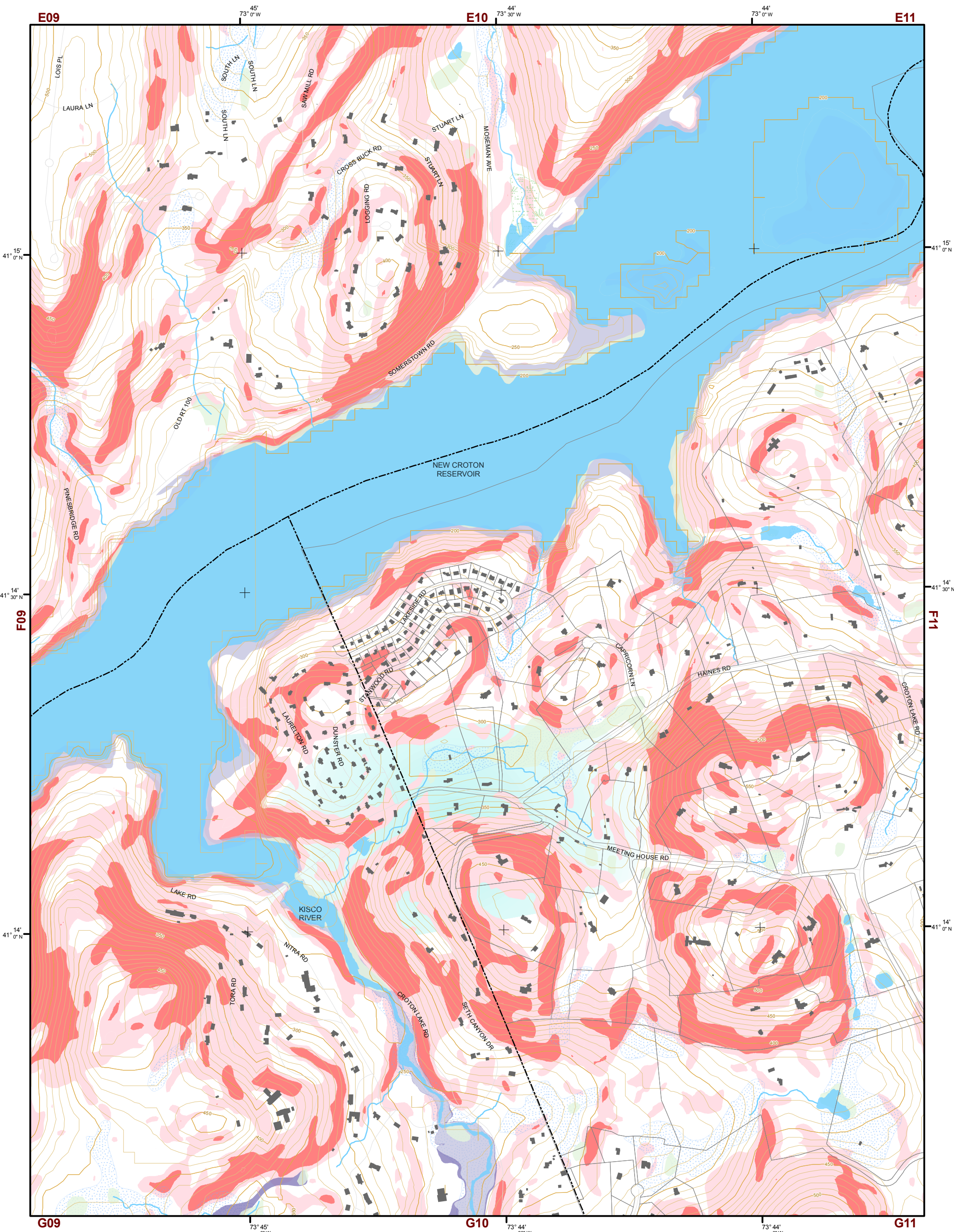
D10	D11	D12	D13	D14	D15
E10	E11	E12	E13	E14	E15
F10	F11	F12	F13	F14	F15
G10	G11	G12	G13	G14	G15
H10	H11	H12	H13	H14	H15
I10	I11	I12	I13	I14	I15

This map is for general information only and should not be used for site specific planning. Data was collected from a wide range of local, state, and federal GIS databases "as is." Westchester County assumes no liability to any party for any loss or damage caused by errors or omissions resulting from negligence, accident or any other cause.



Westchester County Board of Legislators  
 Andrew J. Span, Westchester County Executive



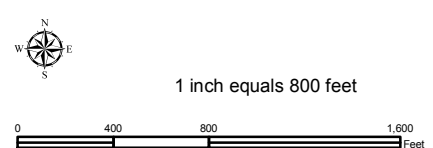
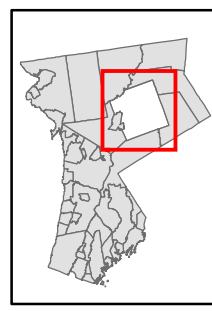


# Natural Resource Inventory

## Town of Bedford

Map # F10

TILE INDEX



**Legend**

- 10' TOPO
- 50' TOPO
- Streams
- Lakes, Ponds or Reservoirs
- Aquifer
- Drainage Divides
- Hydric Soils
- Municipal Boundaries
- Tax Parcels
- Buildings
- Slope**
- 15% - 25%
- 25% and Over
- National Wetlands Inventory

- NYSDEC Wetlands**
- Greater than 12.4 acres
- Less than 12.4 acres
- Floodplains**
- 100
- 500

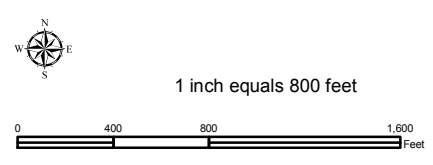
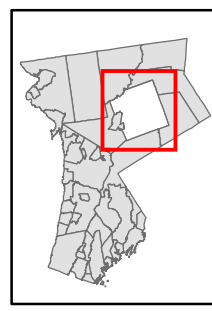
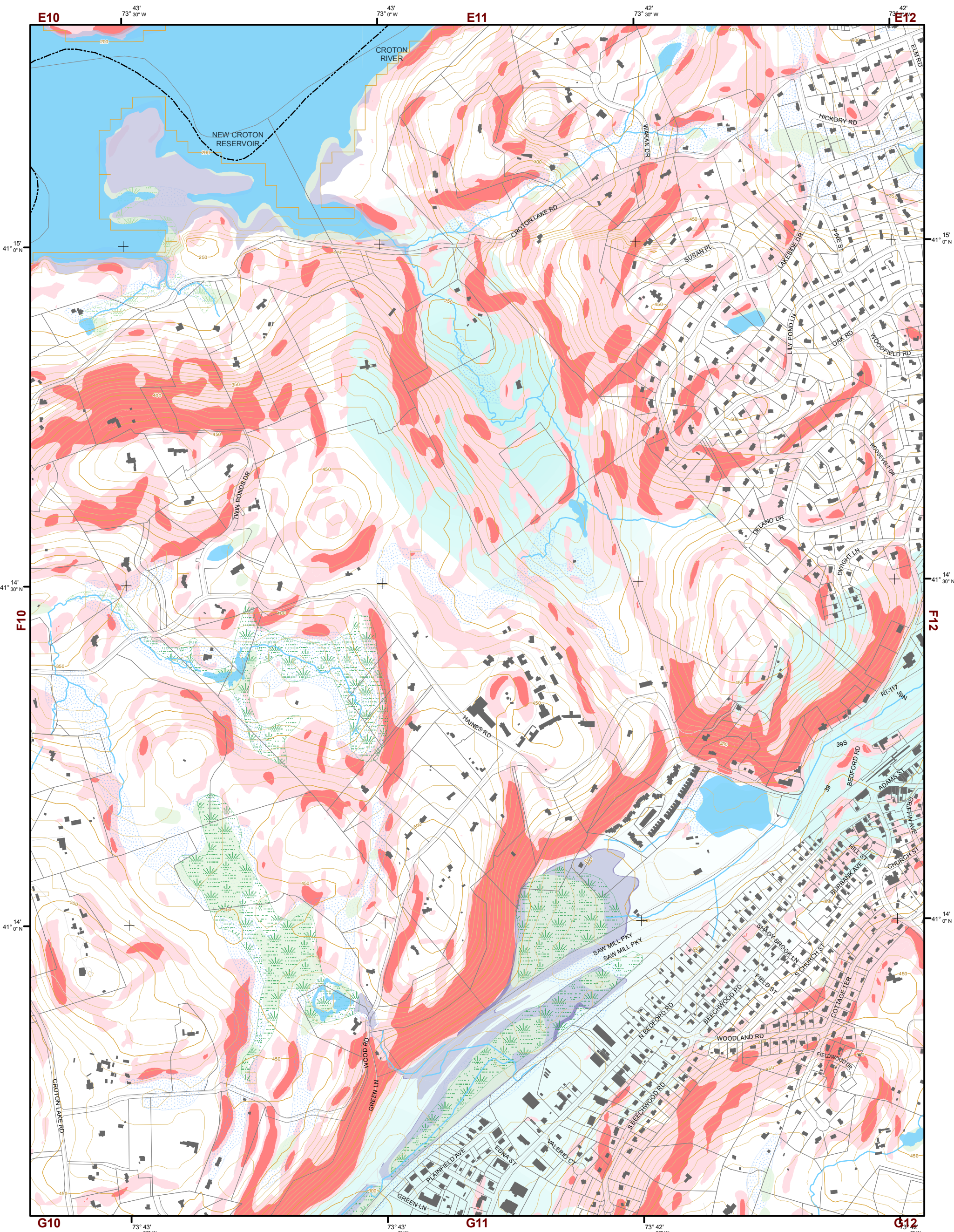
D10	D11	D12	D13	D14	D15
E10	E11	E12	E13	E14	E15
<b>F10</b>	F11	F12	F13	F14	F15
G10	G11	G12	G13	G14	G15
H10	H11	H12	H13	H14	H15
I10	I11	I12	I13	I14	I15

This map is for general information only and should not be used for site specific planning. Data was collected from a wide range of local, state, and federal GIS databases "as is." Westchester County assumes no liability to any party for any loss or damage caused by errors or omissions resulting from negligence, accident or any other cause.



Westchester County Board of Legislators  
 Andrew J. Span, Westchester County Executive





# Natural Resource Inventory

## Town of Bedford

Map # F11

### Legend

- 10' TOPO
- 50' TOPO
- Streams
- Lakes, Ponds or Reservoirs
- Aquifer
- Drainage Divides
- Hydric Soils
- Municipal Boundaries
- Tax Parcels
- Buildings
- Slope 15% - 25%
- Slope 25% and Over
- National Wetlands Inventory

- NYSDEC Wetlands Greater than 12.4 acres
- NYSDEC Wetlands Less than 12.4 acres
- Floodplains 100
- Floodplains 500

### TILE INDEX

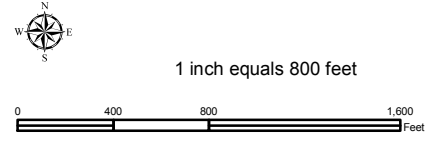
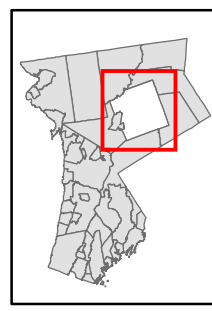
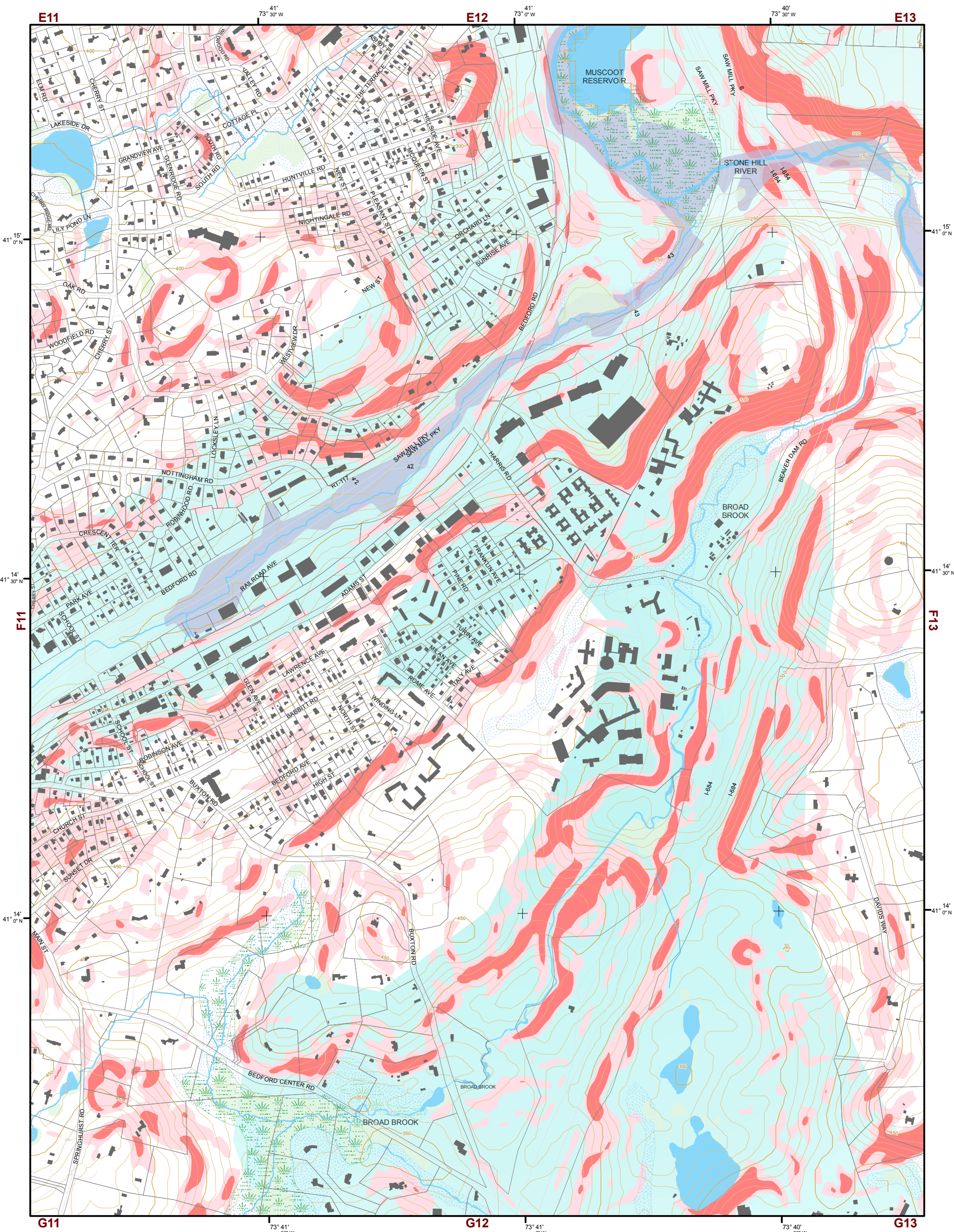
D10	D11	D12	D13	D14	D15
E10	E11	E12	E13	E14	E15
F10	<b>F11</b>	F12	F13	F14	F15
G10	G11	G12	G13	G14	G15
H10	H11	H12	H13	H14	H15
I10	I11	I12	I13	I14	I15

This map is for general information only and should not be used for site specific planning. Data was collected from a wide range of local, state, and federal GIS databases "as is." Westchester County assumes no liability to any party for any loss or damage caused by errors or omissions resulting from negligence, accident or any other cause.



Westchester County Board of Legislators  
Andrew J. Span, Westchester County Executive





# Natural Resource Inventory

## Town of Bedford

Map # F12

- Legend**
- 10' TOPO
  - 50' TOPO
  - Streams
  - Lakes, Ponds or Reservoirs
  - Aquifer
  - Drainage Divides
  - Hydric Soils
  - Municipal Boundaries
  - Tax Parcels
  - Buildings
  - Slope**
  - 15% - 25%
  - 25% and Over
  - National Wetlands Inventory
  - NYSDEC Wetlands**
  - Greater than 12.4 acres
  - Less than 12.4 acres
  - Floodplains**
  - 100
  - 500

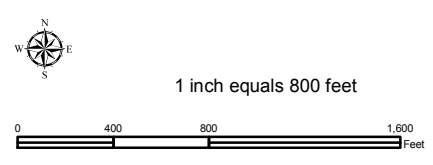
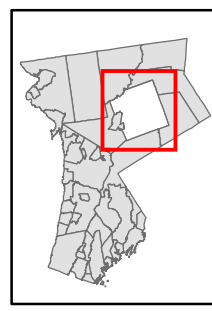
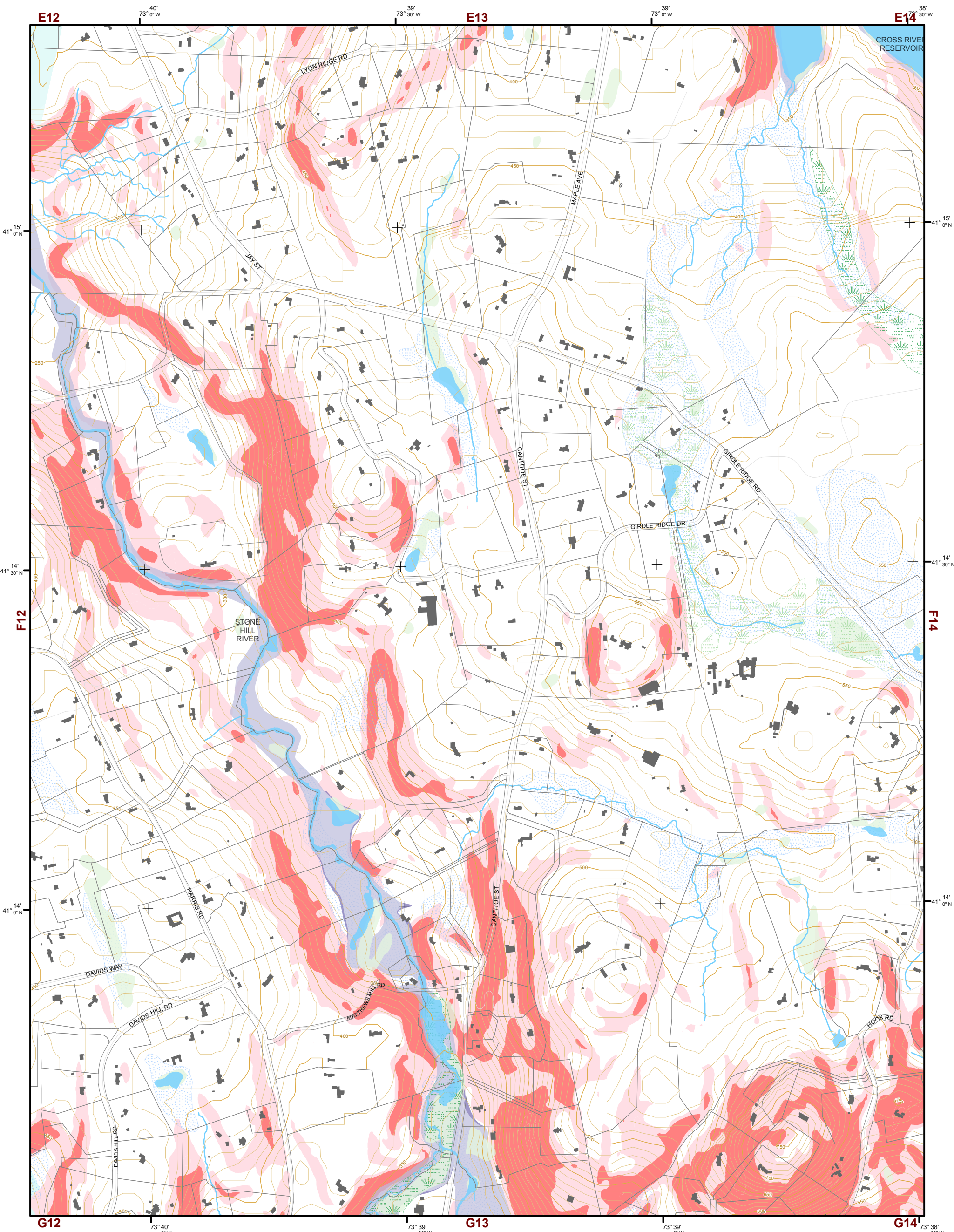
**TILE INDEX**

D10	D11	D12	D13	D14	D15
E10	E11	E12	E13	E14	E15
F10	F11	F12	F13	F14	F15
G10	G11	G12	G13	G14	G15
H10	H11	H12	H13	H14	H15
I10	I11	I12	I13	I14	I15

This map is for general information only and should not be used for site specific planning. Data was collected from a wide range of local, state, and federal GIS databases "as is." Westchester County assumes no liability to any party for any loss or damage caused by errors or omissions resulting from negligence, accident or any other cause.







# Natural Resource Inventory

## Town of Bedford

Map # F13

### Legend

- 10' TOPO
- 50' TOPO
- Streams
- Lakes, Ponds or Reservoirs
- Aquifer
- Drainage Divides
- Hydric Soils
- Municipal Boundaries
- Tax Parcels
- Buildings
- Slope 15% - 25%
- Slope 25% and Over
- National Wetlands Inventory

- NYSDEC Wetlands
- Greater than 12.4 acres
- Less than 12.4 acres

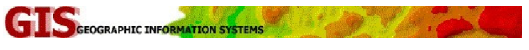
### Floodplains

- 100
- 500

### TILE INDEX

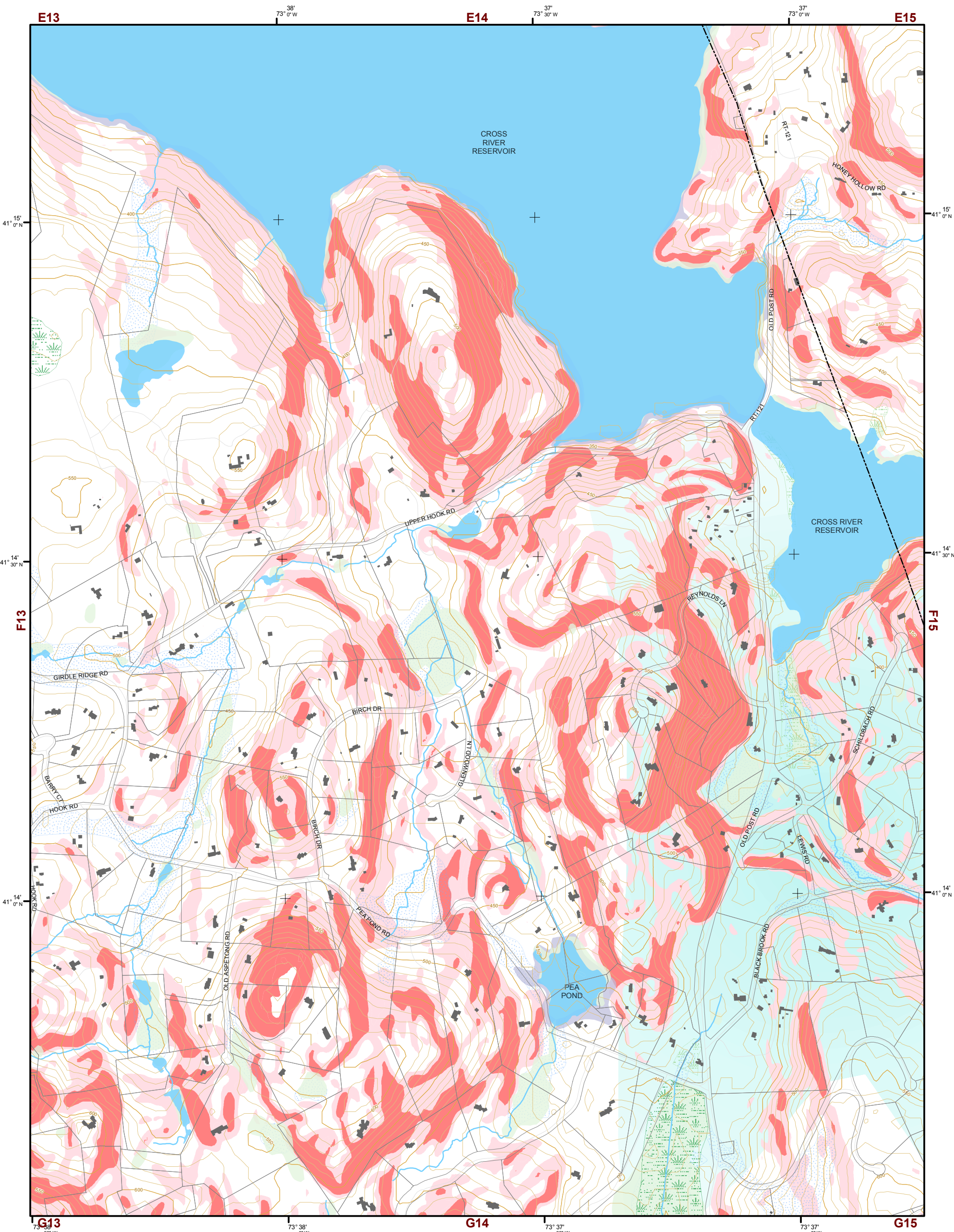
D10	D11	D12	D13	D14	D15
E10	E11	E12	E13	E14	E15
F10	F11	F12	F13	F14	F15
G10	G11	G12	G13	G14	G15
H10	H11	H12	H13	H14	H15
I10	I11	I12	I13	I14	I15

This map is for general information only and should not be used for site specific planning. Data was collected from a wide range of local, state, and federal GIS databases "as is." Westchester County assumes no liability to any party for any loss or damage caused by errors or omissions resulting from negligence, accident or any other cause.



Westchester County Board of Legislators  
Andrew J. Span, Westchester County Executive





# Natural Resource Inventory

## Town of Bedford

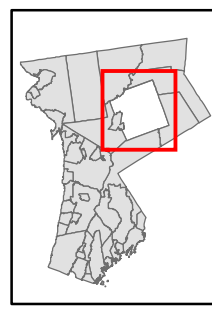
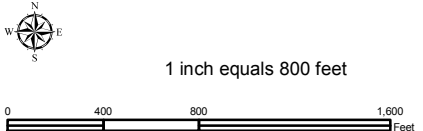
Map # F14

TILE INDEX

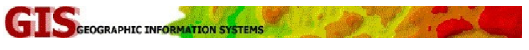
D10	D11	D12	D13	D14	D15
E10	E11	E12	E13	E14	E15
F10	F11	F12	F13	F14	F15
G10	G11	G12	G13	G14	G15
H10	H11	H12	H13	H14	H15
I10	I11	I12	I13	I14	I15

**Legend**

- 10' TOPO
- 50' TOPO
- Streams
- Lakes, Ponds or Reservoirs
- Aquifer
- Drainage Divides
- Hydric Soils
- Municipal Boundaries
- Tax Parcels
- Buildings
- Slope**
- 15% - 25%
- 25% and Over
- National Wetlands Inventory
- NYSDEC Wetlands**
- Greater than 12.4 acres
- Less than 12.4 acres
- Floodplains**
- 100
- 500

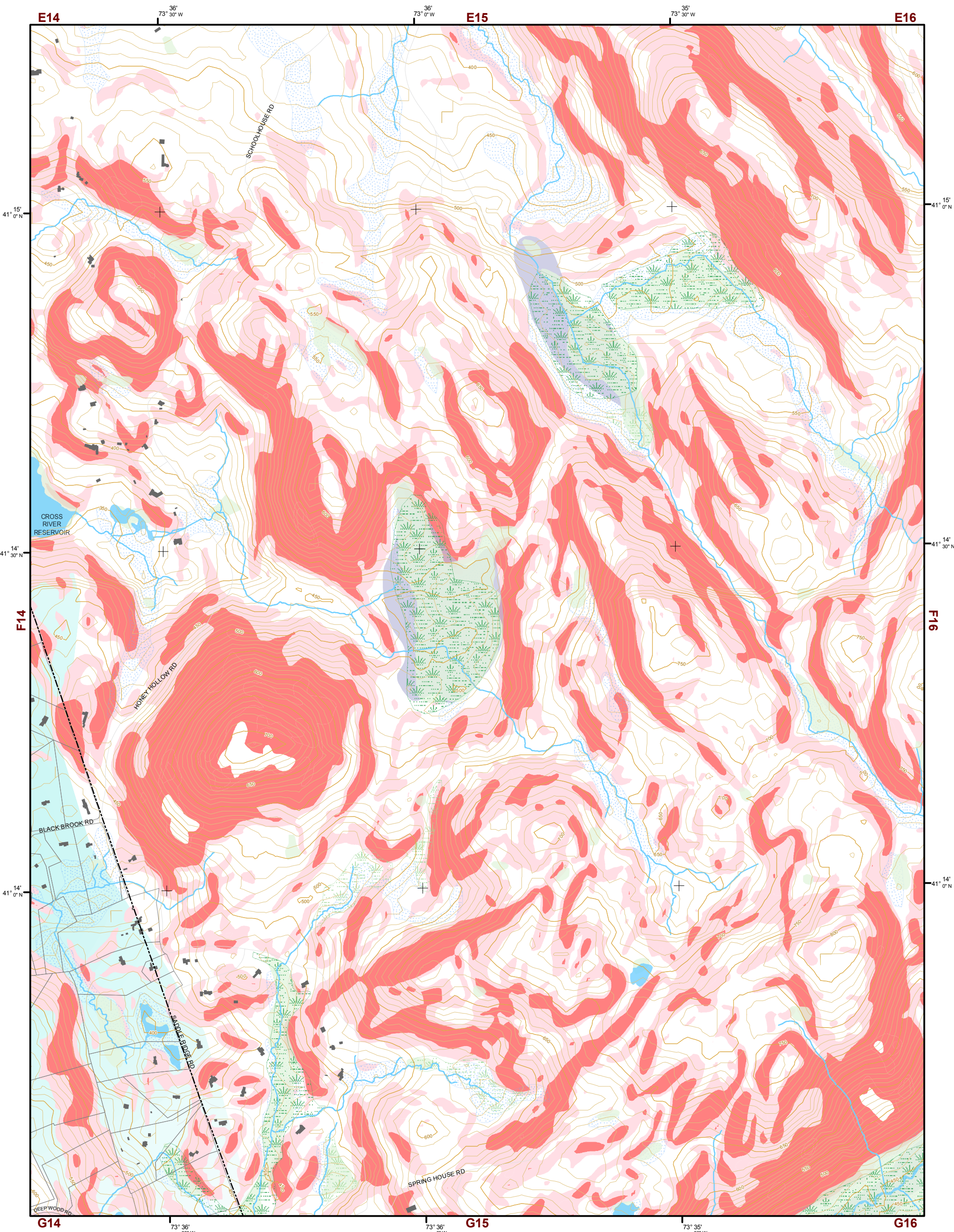


This map is for general information only and should not be used for site specific planning. Data was collected from a wide range of local, state, and federal GIS databases "as is." Westchester County assumes no liability to any party for any loss or damage caused by errors or omissions resulting from negligence, accident or any other cause.



Westchester County Board of Legislators  
Andrew J. Span, Westchester County Executive

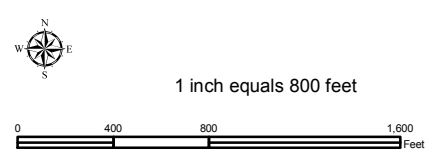
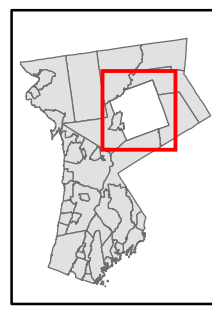




# Natural Resource Inventory

## Town of Bedford

Map # F15



### Legend

- 10' TOPO
- 50' TOPO
- Streams
- Lakes, Ponds or Reservoirs
- Aquifer
- Drainage Divides
- Hydric Soils
- Municipal Boundaries
- Tax Parcels
- Buildings
- Slope**
- 15% - 25%
- 25% and Over
- National Wetlands Inventory

- NYSDEC Wetlands**
- Greater than 12.4 acres
- Less than 12.4 acres
- Floodplains**
- 100
- 500

### TILE INDEX

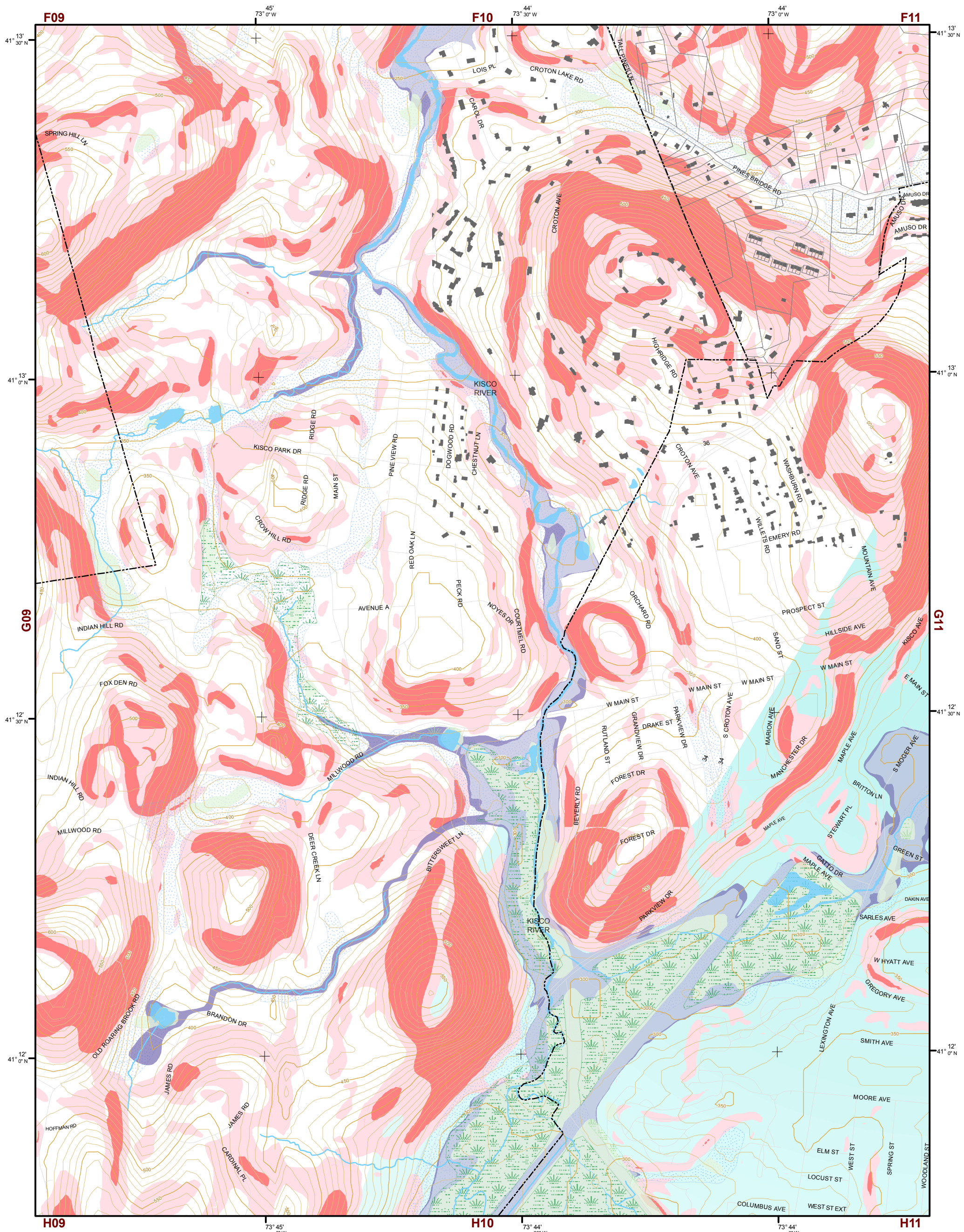
D10	D11	D12	D13	D14	D15
E10	E11	E12	E13	E14	E15
F10	F11	F12	F13	F14	F15
G10	G11	G12	G13	G14	G15
H10	H11	H12	H13	H14	H15
I10	I11	I12	I13	I14	I15

This map is for general information only and should not be used for site specific planning. Data was collected from a wide range of local, state, and federal GIS databases "as is." Westchester County assumes no liability to any party for any loss or damage caused by errors or omissions resulting from negligence, accident or any other cause.



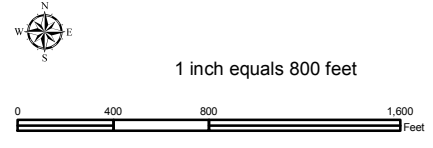
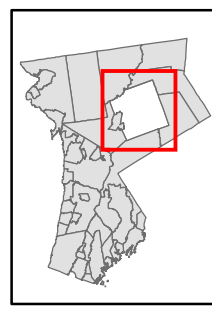
Westchester County Board of Legislators  
 Andrew J. Span, Westchester County Executive





# Natural Resource Inventory Map # G10

## Town of Bedford



- Legend**
- 10' TOPO
  - 50' TOPO
  - Streams
  - Lakes, Ponds or Reservoirs
  - Aquifer
  - Drainage Divides
  - Hydric Soils
  - Municipal Boundaries
  - Tax Parcels
  - Buildings
  - Slope 15% - 25%
  - Slope 25% and Over
  - National Wetlands Inventory
  - NYSDEC Wetlands Greater than 12.4 acres
  - NYSDEC Wetlands Less than 12.4 acres
  - Floodplains 100
  - Floodplains 500

**TILE INDEX**

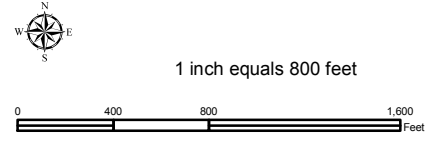
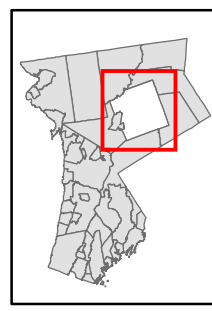
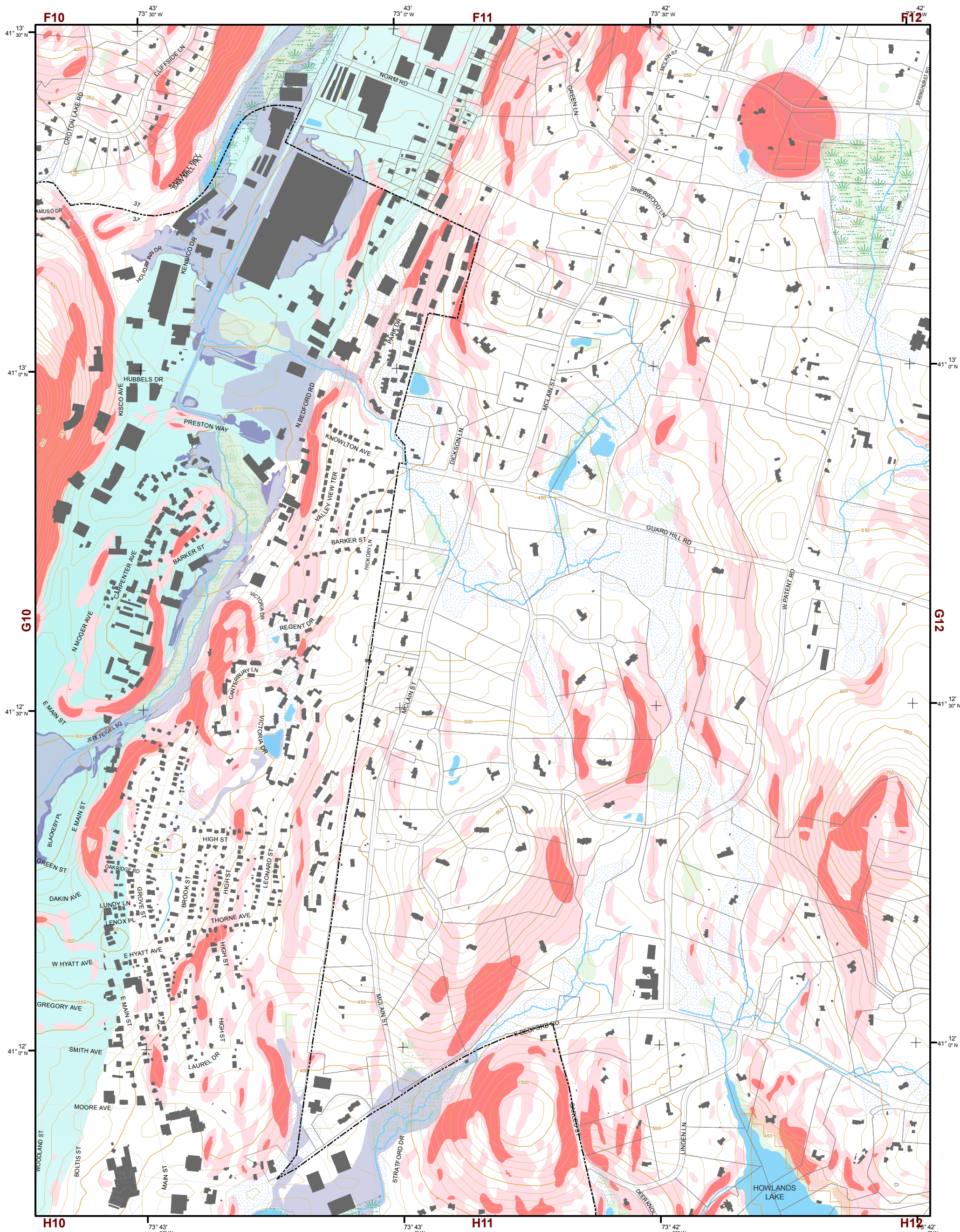
D10	D11	D12	D13	D14	D15
E10	E11	E12	E13	E14	E15
F10	F11	F12	F13	F14	F15
G10	G11	G12	G13	G14	G15
H10	H11	H12	H13	H14	H15
I10	I11	I12	I13	I14	I15

This map is for general information only and should not be used for site specific planning. Data was collected from a wide range of local, state, and federal GIS databases "as is." Westchester County assumes no liability to any party for any loss or damage caused by errors or omissions resulting from negligence, accident or any other cause.



Westchester County Board of Legislators  
 Andrew J. Span, Westchester County Executive





# Natural Resource Inventory

## Town of Bedford

Map # G11

- Legend**
- 10' TOPO
  - 50' TOPO
  - Streams
  - Lakes, Ponds or Reservoirs
  - Aquifer
  - Drainage Divides
  - Hydric Soils
  - Municipal Boundaries
  - Tax Parcels
  - Buildings
  - Slope 15% - 25%
  - Slope 25% and Over
  - National Wetlands Inventory

- NYSDEC Wetlands**
- Greater than 12.4 acres
  - Less than 12.4 acres
- Floodplains**
- 100
  - 500

**TILE INDEX**

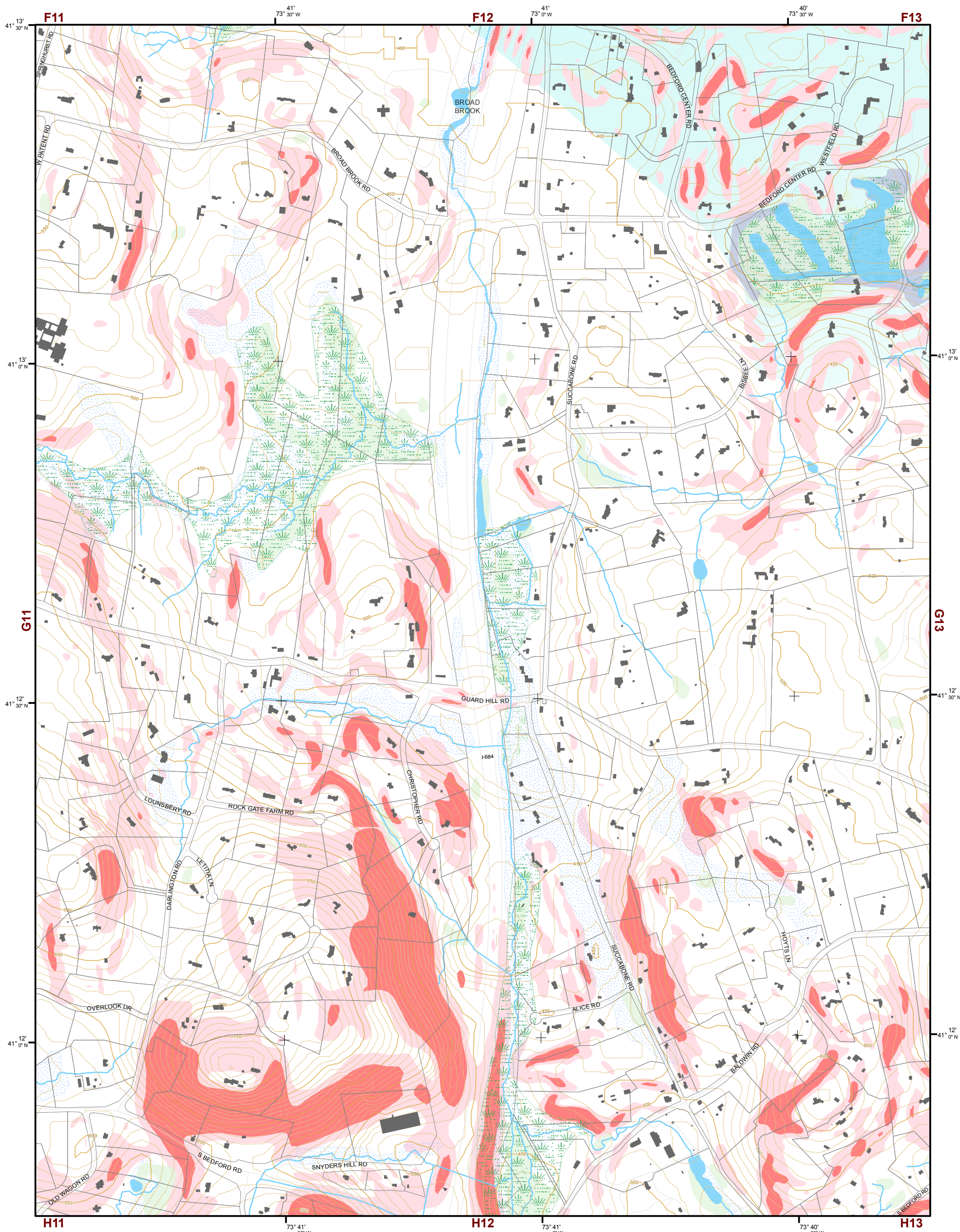
D10	D11	D12	D13	D14	D15
E10	E11	E12	E13	E14	E15
F10	F11	F12	F13	F14	F15
G10	<b>G11</b>	G12	G13	G14	G15
H10	H11	H12	H13	H14	H15
I10	I11	I12	I13	I14	I15

This map is for general information only and should not be used for site specific planning. Data was collected from a wide range of local, state, and federal GIS databases "as is." Westchester County assumes no liability to any party for any loss or damage caused by errors or omissions resulting from negligence, accident or any other cause.



Westchester County Board of Legislators  
 Andrew J. Span, Westchester County Executive





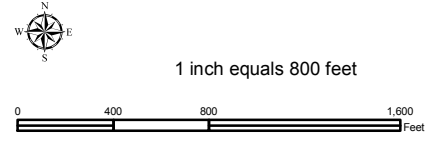
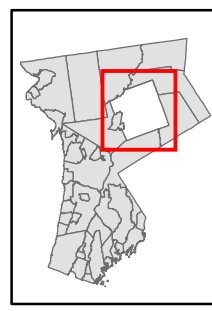
# Natural Resource Inventory

## Town of Bedford

Map # G12

TILE INDEX

D10	D11	D12	D13	D14	D15
E10	E11	E12	E13	E14	E15
F10	F11	F12	F13	F14	F15
G10	G11	G12	G13	G14	G15
H10	H11	H12	H13	H14	H15
I10	I11	I12	I13	I14	I15



### Legend

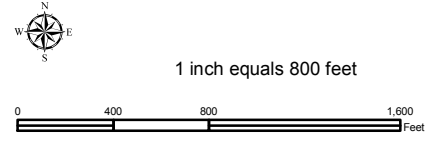
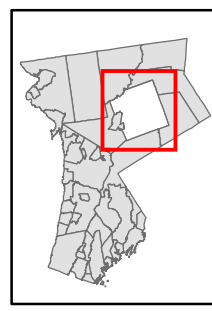
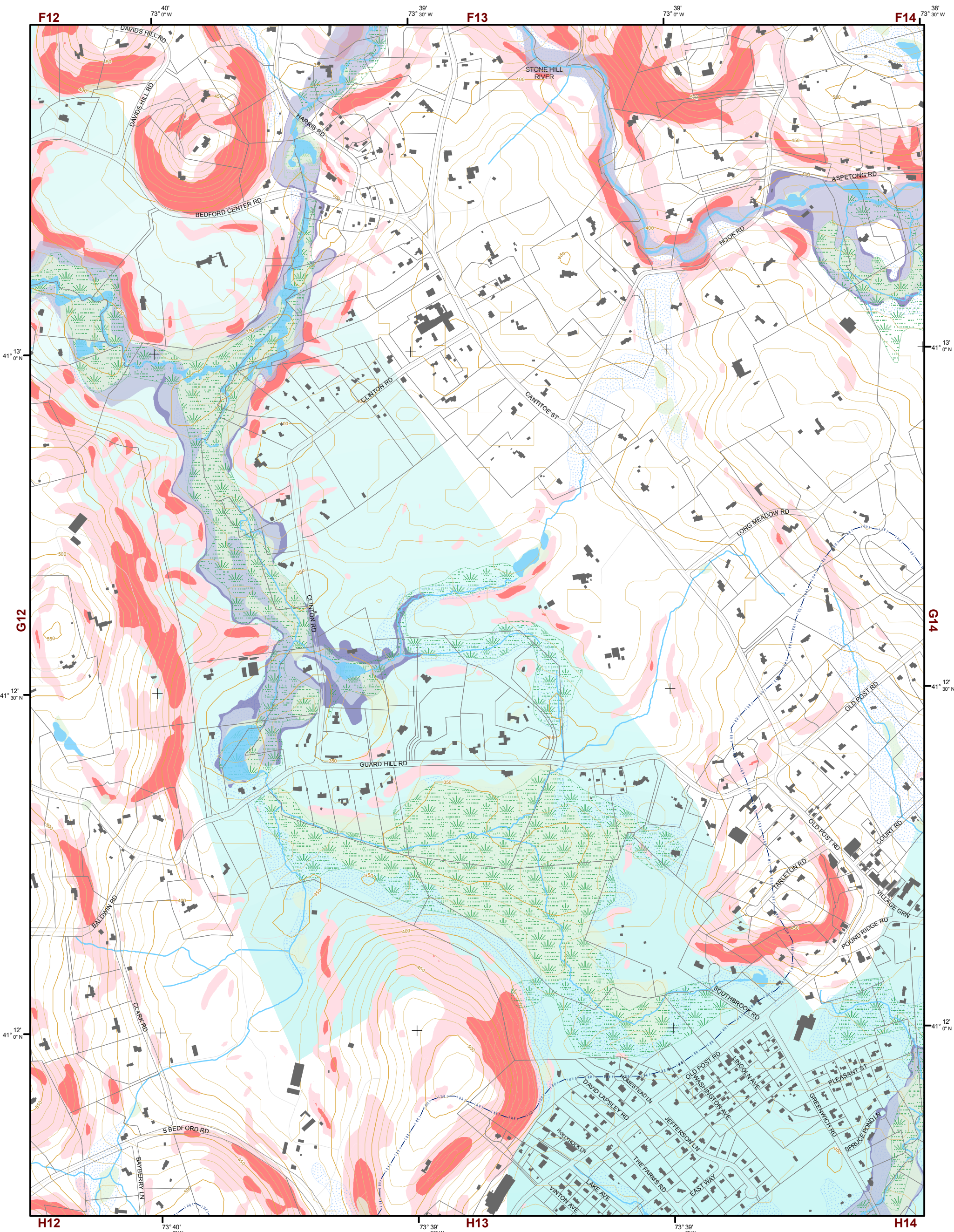
- 10' TOPO
- 50' TOPO
- Streams
- Lakes, Ponds or Reservoirs
- Aquifer
- Drainage Divides
- Hydric Soils
- Municipal Boundaries
- Tax Parcels
- Buildings
- Slope 15% - 25%
- Slope 25% and Over
- National Wetlands Inventory
- NYSDEC Wetlands Greater than 12.4 acres
- NYSDEC Wetlands Less than 12.4 acres
- Floodplains 100
- Floodplains 500

This map is for general information only and should not be used for site specific planning. Data was collected from a wide range of local, state, and federal GIS databases "as is." Westchester County assumes no liability to any party for any loss or damage caused by errors or omissions resulting from negligence, accident or any other cause.



Westchester County Board of Legislators  
Andrew J. Span, Westchester County Executive





# Natural Resource Inventory

## Town of Bedford

Map # **G13**

### Legend

- 10' TOPO
- 50' TOPO
- Streams
- Lakes, Ponds or Reservoirs
- Aquifer
- Drainage Divides
- Hydric Soils
- Municipal Boundaries
- Tax Parcels
- Buildings
- Slope**
  - 15% - 25%
  - 25% and Over
- NYSDEC Wetlands**
  - Greater than 12.4 acres
  - Less than 12.4 acres
- Floodplains**
  - 100
  - 500
- National Wetlands Inventory

### TILE INDEX

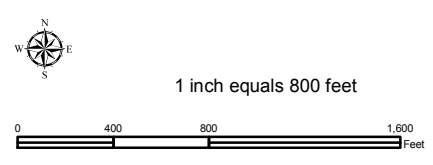
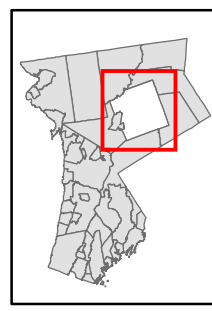
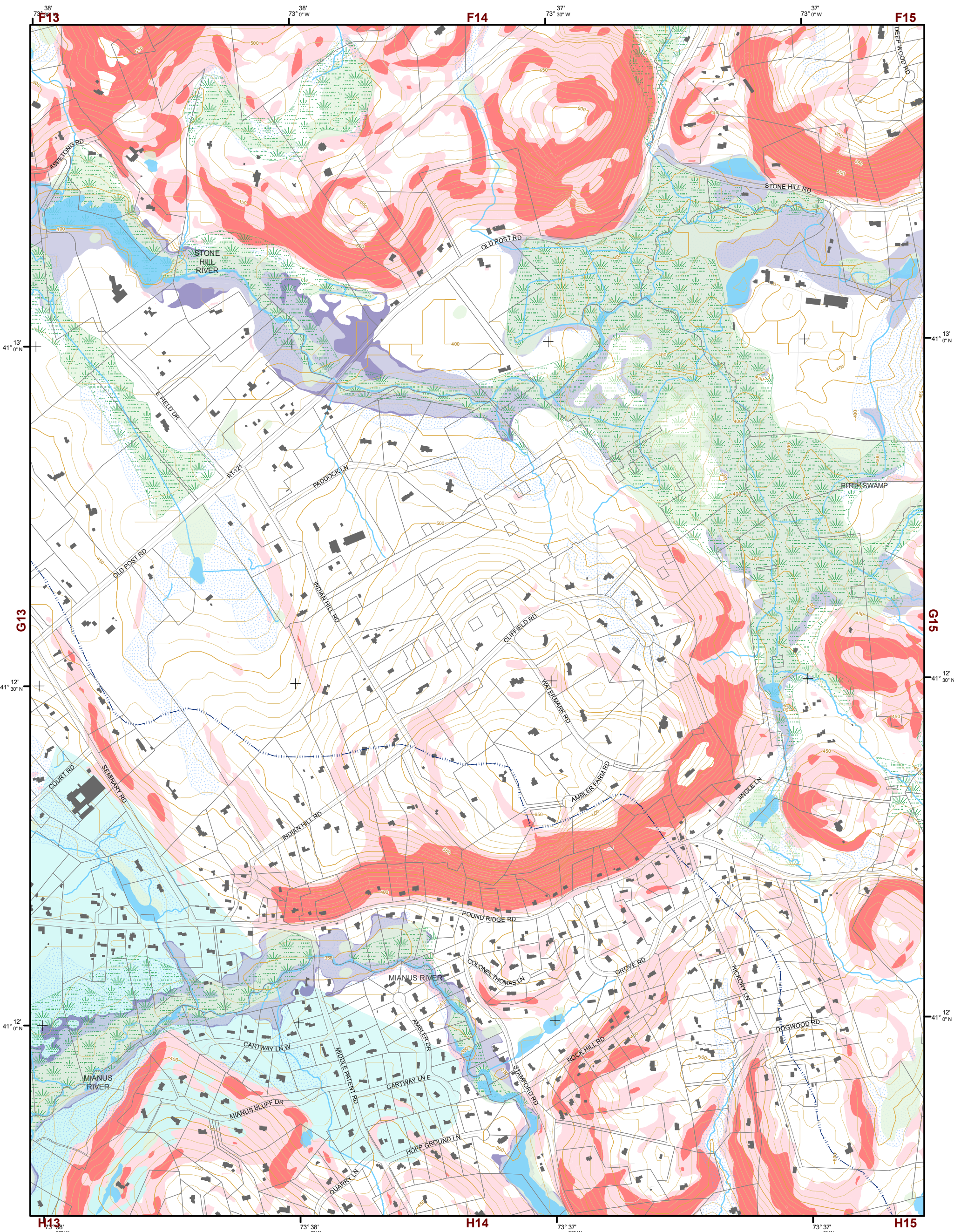
D10	D11	D12	D13	D14	D15
E10	E11	E12	E13	E14	E15
F10	F11	F12	F13	F14	F15
G10	G11	G12	<b>G13</b>	G14	G15
H10	H11	H12	H13	H14	H15
I10	I11	I12	I13	I14	I15

This map is for general information only and should not be used for site specific planning. Data was collected from a wide range of local, state, and federal GIS databases "as is." Westchester County assumes no liability to any party for any loss or damage caused by errors or omissions resulting from negligence, accident or any other cause.



Westchester County  
County Board of Legislators





# Natural Resource Inventory

## Town of Bedford

Map # G14

### Legend

- 10' TOPO
- 50' TOPO
- Streams
- Lakes, Ponds or Reservoirs
- Aquifer
- Drainage Divides
- Hydric Soils
- Municipal Boundaries
- Tax Parcels
- Buildings
- Slope**
- 15% - 25%
- 25% and Over
- National Wetlands Inventory

- NYSDEC Wetlands**
- Greater than 12.4 acres
- Less than 12.4 acres
- Floodplains**
- 100
- 500

### TILE INDEX

D10	D11	D12	D13	D14	D15
E10	E11	E12	E13	E14	E15
F10	F11	F12	F13	F14	F15
G10	G11	G12	G13	G14	G15
H10	H11	H12	H13	H14	H15
I10	I11	I12	I13	I14	I15

This map is for general information only and should not be used for site specific planning. Data was collected from a wide range of local, state, and federal GIS databases "as is." Westchester County assumes no liability to any party for any loss or damage caused by errors or omissions resulting from negligence, accident or any other cause.



Westchester County Board of Legislators  
 Andrew J. Span, Westchester County Executive





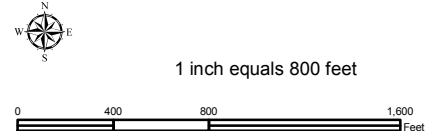
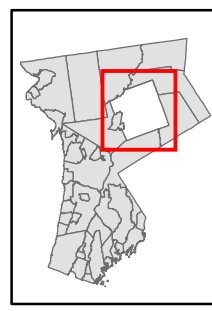
# Natural Resource Inventory

## Town of Bedford

Map # G15

TILE INDEX

D10	D11	D12	D13	D14	D15
E10	E11	E12	E13	E14	E15
F10	F11	F12	F13	F14	F15
G10	G11	G12	G13	G14	G15
H10	H11	H12	H13	H14	H15
I10	I11	I12	I13	I14	I15



### Legend

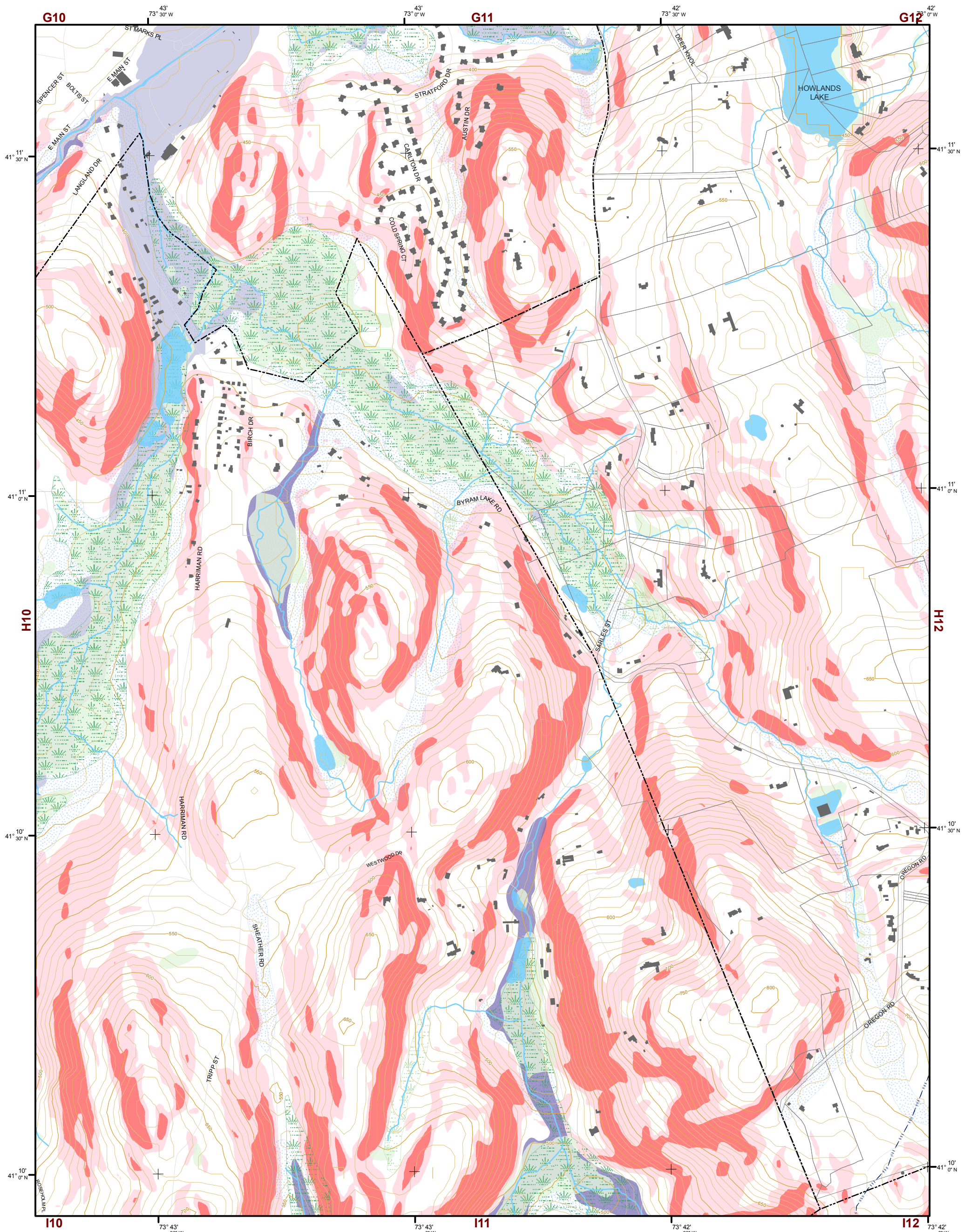
- 10' TOPO
- 50' TOPO
- Streams
- Lakes, Ponds or Reservoirs
- Aquifer
- Drainage Divides
- Hydric Soils
- Municipal Boundaries
- Tax Parcels
- Buildings
- Slope 15% - 25%
- Slope 25% and Over
- NYSDEC Wetlands Greater than 12.4 acres
- NYSDEC Wetlands Less than 12.4 acres
- Floodplains 100
- Floodplains 500
- National Wetlands Inventory

This map is for general information only and should not be used for site specific planning. Data was collected from a wide range of local, state, and federal GIS databases "as is." Westchester County assumes no liability to any party for any loss or damage caused by errors or omissions resulting from negligence, accident or any other cause.



Westchester County Board of Legislators  
Andrew J. Span, Westchester County Executive

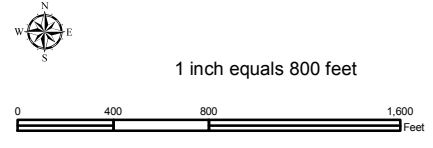
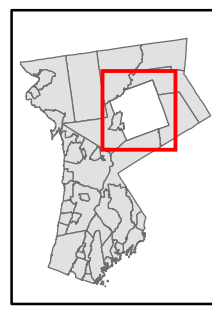




# Natural Resource Inventory

## Town of Bedford

Map # H11



- Legend**
- 10' TOPO
  - 50' TOPO
  - Streams
  - Lakes, Ponds or Reservoirs
  - Aquifer
  - Drainage Divides
  - Hydric Soils
  - Municipal Boundaries
  - Tax Parcels
  - Buildings
  - Slope**
  - 15% - 25%
  - 25% and Over
  - National Wetlands Inventory

- NYSDEC Wetlands**
- Greater than 12.4 acres
  - Less than 12.4 acres
- Floodplains**
- 100
  - 500

**TILE INDEX**

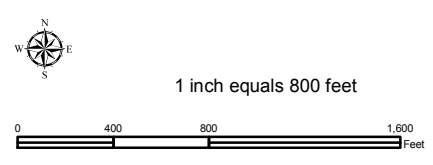
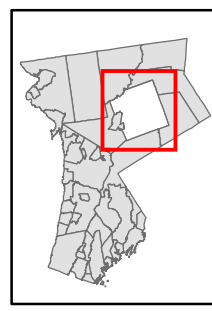
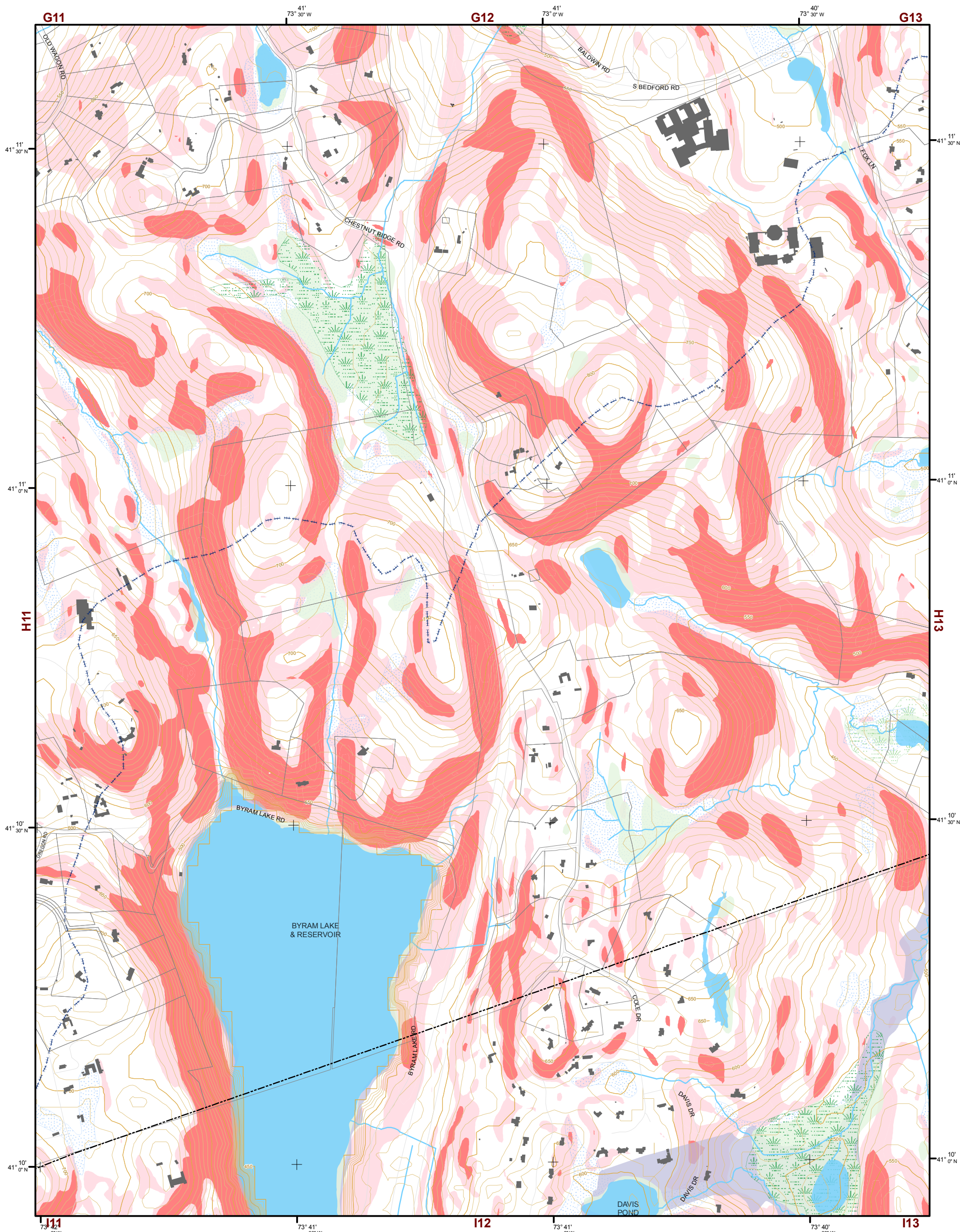
D10	D11	D12	D13	D14	D15
E10	E11	E12	E13	E14	E15
F10	F11	F12	F13	F14	F15
G10	G11	G12	G13	G14	G15
H10	H11	H12	H13	H14	H15
I10	I11	I12	I13	I14	I15

This map is for general information only and should not be used for site specific planning. Data was collected from a wide range of local, state, and federal GIS databases "as is." Westchester County assumes no liability to any party for any loss or damage caused by errors or omissions resulting from negligence, accident or any other cause.



Westchester County Board of Legislators  
Andrew J. Span, Westchester County Executive





# Natural Resource Inventory

## Town of Bedford

Map # H12

### Legend

- 10' TOPO
- 50' TOPO
- Streams
- Lakes, Ponds or Reservoirs
- Aquifer
- Drainage Divides
- Hydric Soils
- Municipal Boundaries
- Tax Parcels
- Buildings
- Slope**
- 15% - 25%
- 25% and Over
- National Wetlands Inventory
- NYSDEC Wetlands**
- Greater than 12.4 acres
- Less than 12.4 acres
- Floodplains**
- 100
- 500

### TILE INDEX

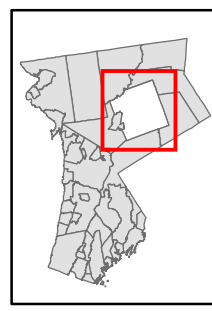
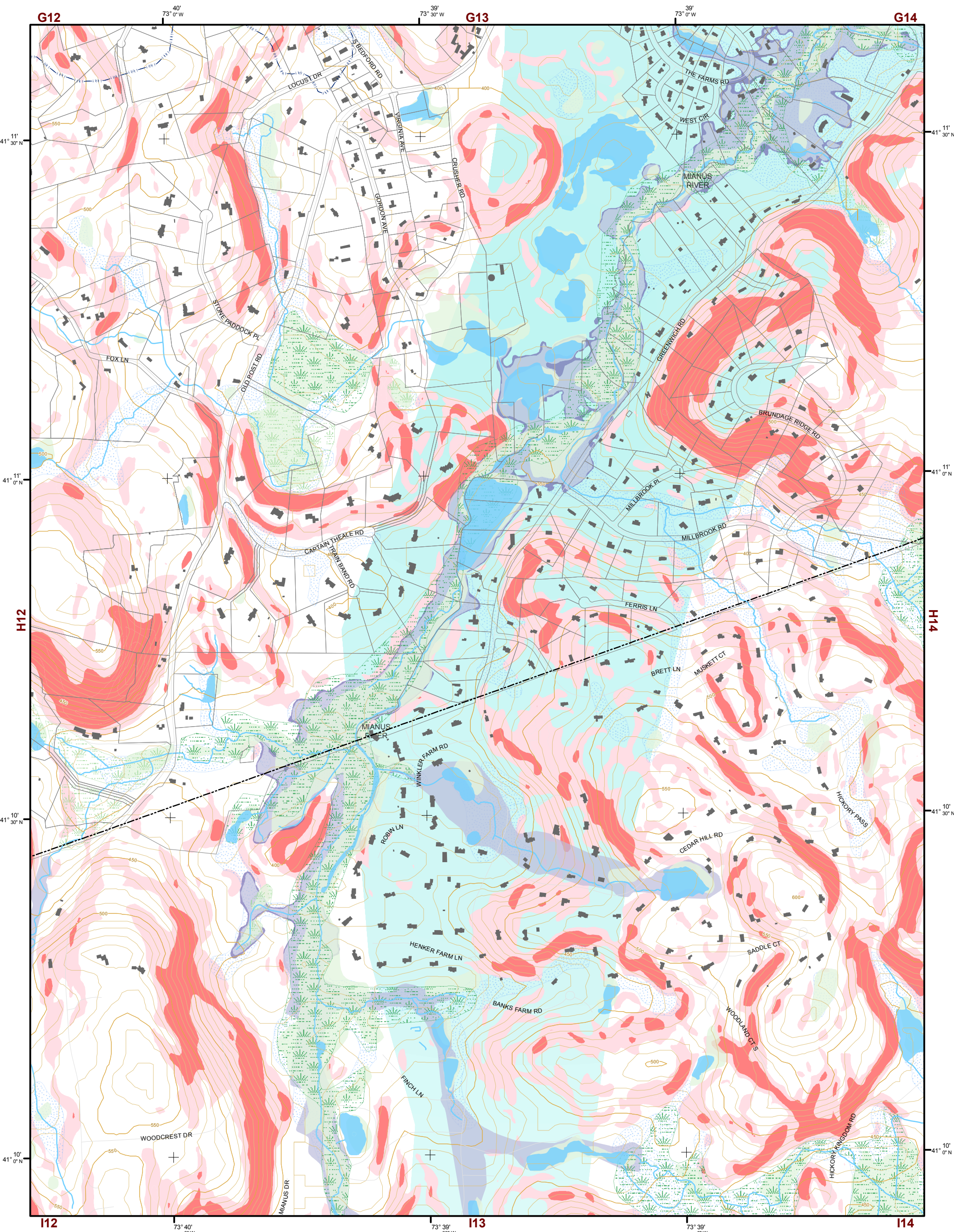
D10	D11	D12	D13	D14	D15
E10	E11	E12	E13	E14	E15
F10	F11	F12	F13	F14	F15
G10	G11	G12	G13	G14	G15
H10	H11	H12	H13	H14	H15
I10	I11	I12	I13	I14	I15

This map is for general information only and should not be used for site specific planning. Data was collected from a wide range of local, state, and federal GIS databases "as is." Westchester County assumes no liability to any party for any loss or damage caused by errors or omissions resulting from negligence, accident or any other cause.



Westchester County Board of Legislators  
 Andrew J. Span, Westchester County Executive

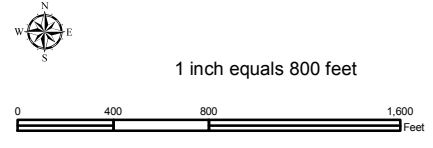




# Natural Resource Inventory

## Town of Bedford

Map # H13



### Legend

- 10' TOPO
- 50' TOPO
- Streams
- Lakes, Ponds or Reservoirs
- Aquifer
- Drainage Divides
- Hydric Soils
- Municipal Boundaries
- Tax Parcels
- Buildings
- 15% - 25%
- 25% and Over
- National Wetlands Inventory

- NYSDEC Wetlands
  - Greater than 12.4 acres
  - Less than 12.4 acres
- Floodplains
  - 100
  - 500

### TILE INDEX

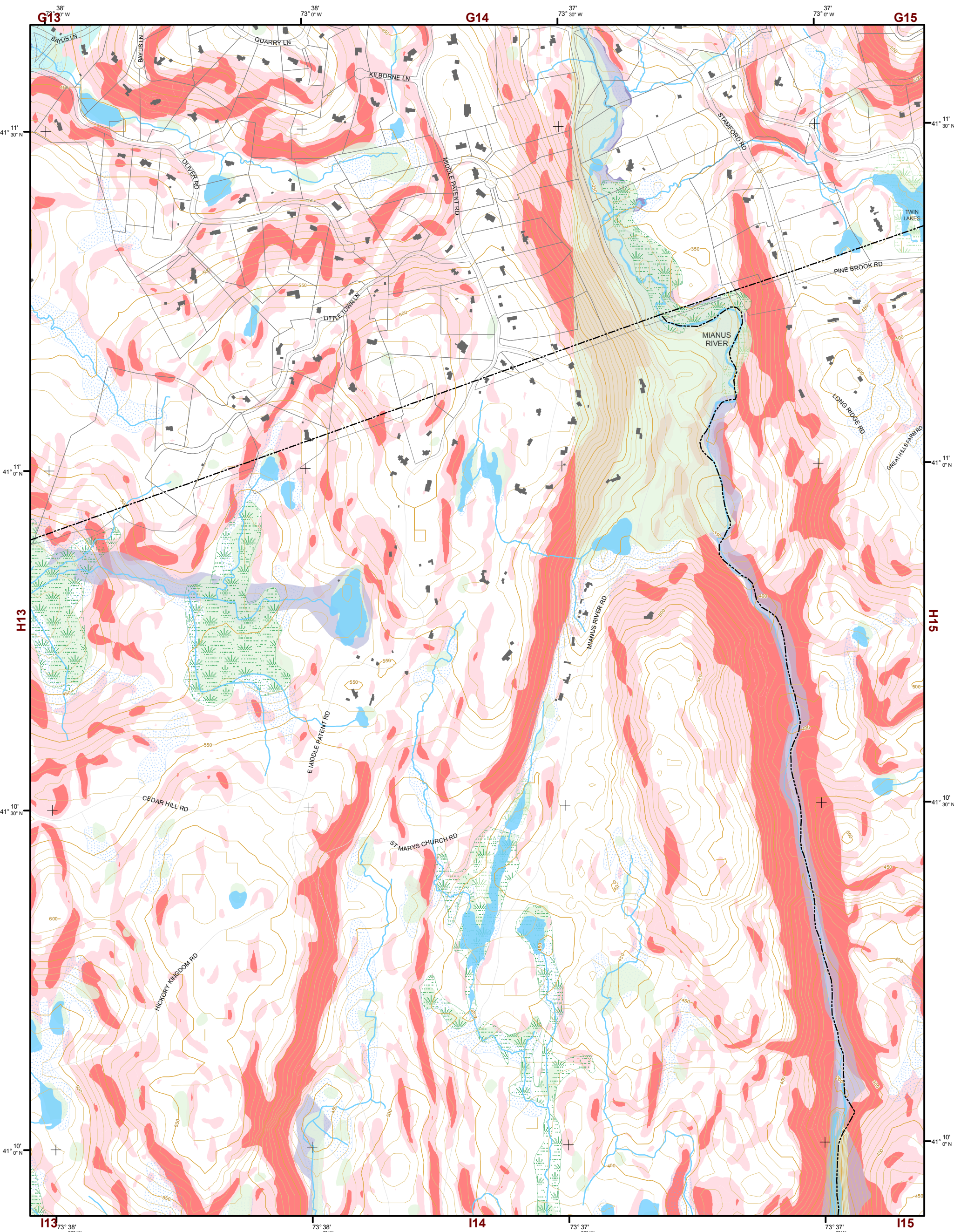
D10	D11	D12	D13	D14	D15
E10	E11	E12	E13	E14	E15
F10	F11	F12	F13	F14	F15
G10	G11	G12	G13	G14	G15
H10	H11	H12	H13	H14	H15
I10	I11	I12	I13	I14	I15

This map is for general information only and should not be used for site specific planning. Data was collected from a wide range of local, state, and federal GIS databases "as is." Westchester County assumes no liability to any party for any loss or damage caused by errors or omissions resulting from negligence, accident or any other cause.



Westchester County Board of Legislators  
 Andrew J. Span, Westchester County Executive



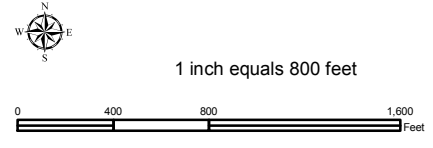
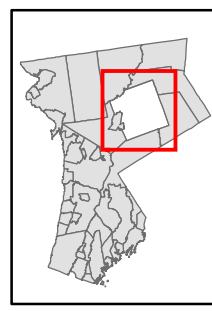


# Natural Resource Inventory

## Town of Bedford

Map # H14

TILE INDEX



**Legend**

- 10' TOPO
- 50' TOPO
- Streams
- Lakes, Ponds or Reservoirs
- Aquifer
- Drainage Divides
- Hydric Soils
- Municipal Boundaries
- Tax Parcels
- Buildings
- Slope**
- 15% - 25%
- 25% and Over
- National Wetlands Inventory

- NYSDEC Wetlands**
- Greater than 12.4 acres
- Less than 12.4 acres
- Floodplains**
- 100
- 500

D10	D11	D12	D13	D14	D15
E10	E11	E12	E13	E14	E15
F10	F11	F12	F13	F14	F15
G10	G11	G12	G13	G14	G15
H10	H11	H12	H13	H14	H15
I10	I11	I12	I13	I14	I15

This map is for general information only and should not be used for site specific planning. Data was collected from a wide range of local, state, and federal GIS databases "as is." Westchester County assumes no liability to any party for any loss or damage caused by errors or omissions resulting from negligence, accident or any other cause.

Westchester County Board of Legislators  
Andrew J. Span, Westchester County Executive



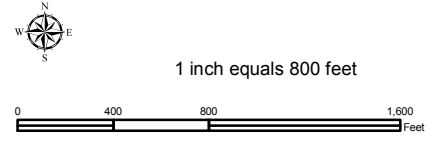
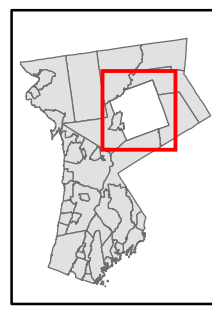




# Natural Resource Inventory

## Town of Bedford

Map # H15



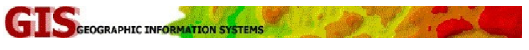
### Legend

- 10' TOPO
- 50' TOPO
- Streams
- Lakes, Ponds or Reservoirs
- Aquifer
- Drainage Divides
- Hydric Soils
- Municipal Boundaries
- Tax Parcels
- Buildings
- Slope**
- 15% - 25%
- 25% and Over
- NYSDEC Wetlands**
- Greater than 12.4 acres
- Less than 12.4 acres
- Floodplains**
- 100
- 500
- National Wetlands Inventory

### TILE INDEX

D10	D11	D12	D13	D14	D15
E10	E11	E12	E13	E14	E15
F10	F11	F12	F13	F14	F15
G10	G11	G12	G13	G14	G15
H10	H11	H12	H13	H14	H15
I10	I11	I12	I13	I14	I15

This map is for general information only and should not be used for site specific planning. Data was collected from a wide range of local, state, and federal GIS databases "as is." Westchester County assumes no liability to any party for any loss or damage caused by errors or omissions resulting from negligence, accident or any other cause.



Westchester County  
 Andrew J. Span, Westchester County Executive  
 County Board of Legislators