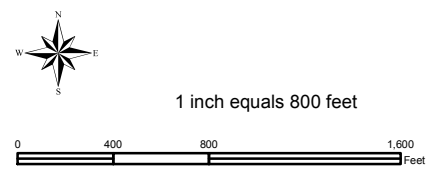
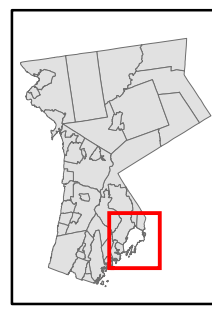


# Natural Resource Inventory

## City of Rye

Map # N12



- Legend**
- 10' TOPO
  - 50' TOPO
  - Streams
  - Lakes, Ponds or Reservoirs
  - Aquifer
  - Drainage Divides
  - Hydric Soils
  - Municipal Boundaries
  - Tax Parcels
  - Buildings
  - Slope
    - 15% - 25%
    - 25% and Over
  - NYSDEC Wetlands
    - Greater than 12.4 acres
    - Less than 12.4 acres
  - Floodplains
    - 100
    - 500
  - Tidal Wetlands
  - National Wetlands Inventory

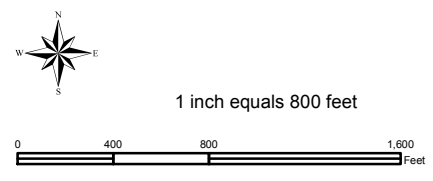
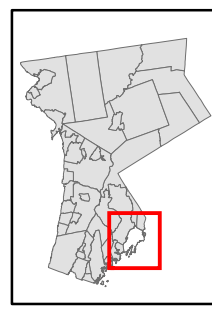
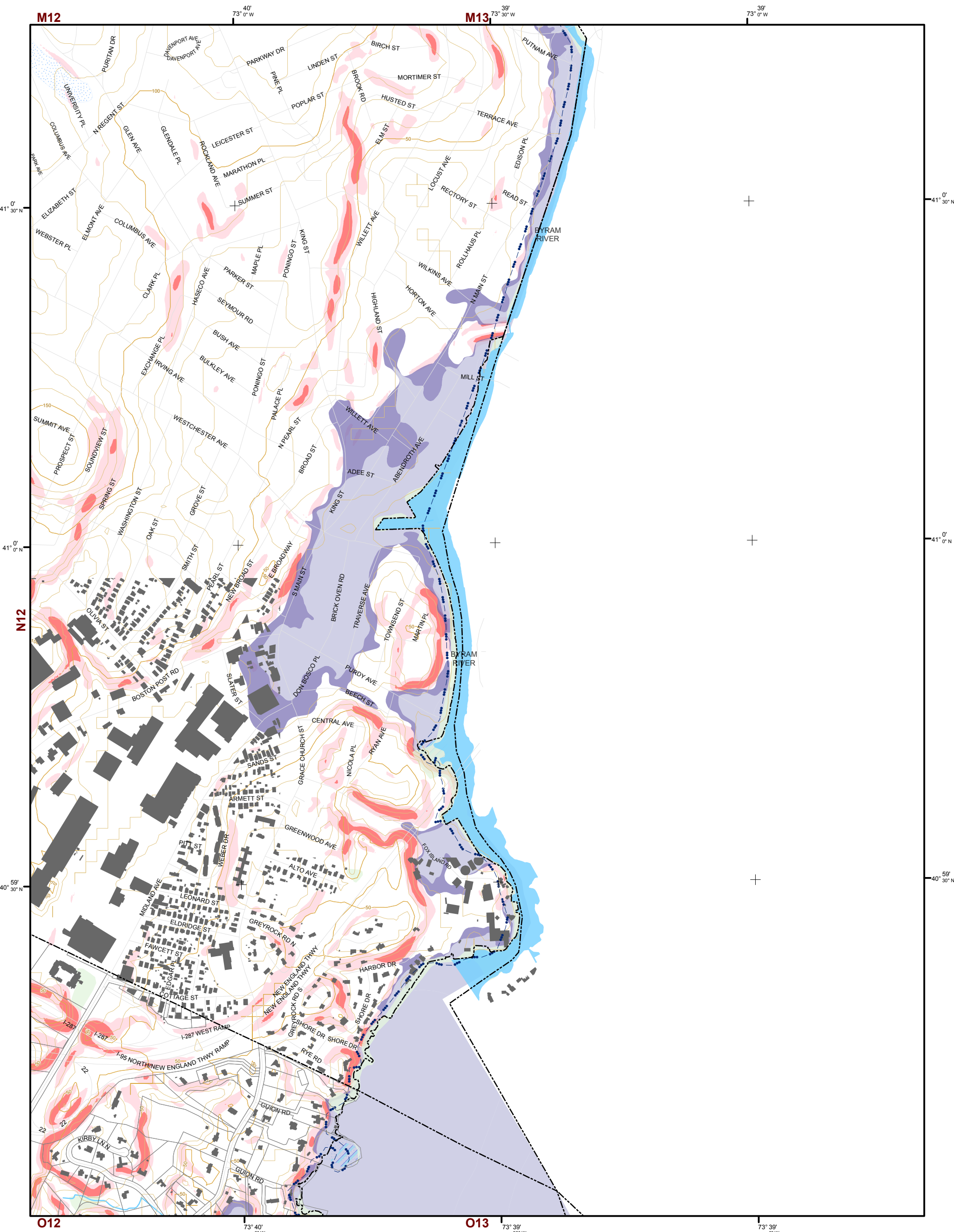
**TILE INDEX**

M10	M11	M12	M13
N10	N11	N12	N13
O10	O11	O12	O13
P10	P11	P12	P13

This map is for general information only and should not be used for site specific planning. Data was collected from a wide range of local, state, and federal GIS databases "as is." Westchester County assumes no liability to any party for any loss or damage caused by errors or omissions resulting from negligence, accident or any other cause.

Westchester County Board of Legislators  
 Andrew J. Span, Westchester County Executive





# Natural Resource Inventory

## City of Rye

Map # N13

### Legend

- 10' TOPO
- 50' TOPO
- Streams
- Lakes, Ponds or Reservoirs
- Aquifer
- Drainage Divides
- Hydric Soils
- Municipal Boundaries
- Tax Parcels
- Buildings
- Slope 15% - 25%
- Slope 25% and Over
- National Wetlands Inventory
- NYSDEC Wetlands Greater than 12.4 acres
- NYSDEC Wetlands Less than 12.4 acres
- Floodplains 100
- Floodplains 500
- Tidal Wetlands

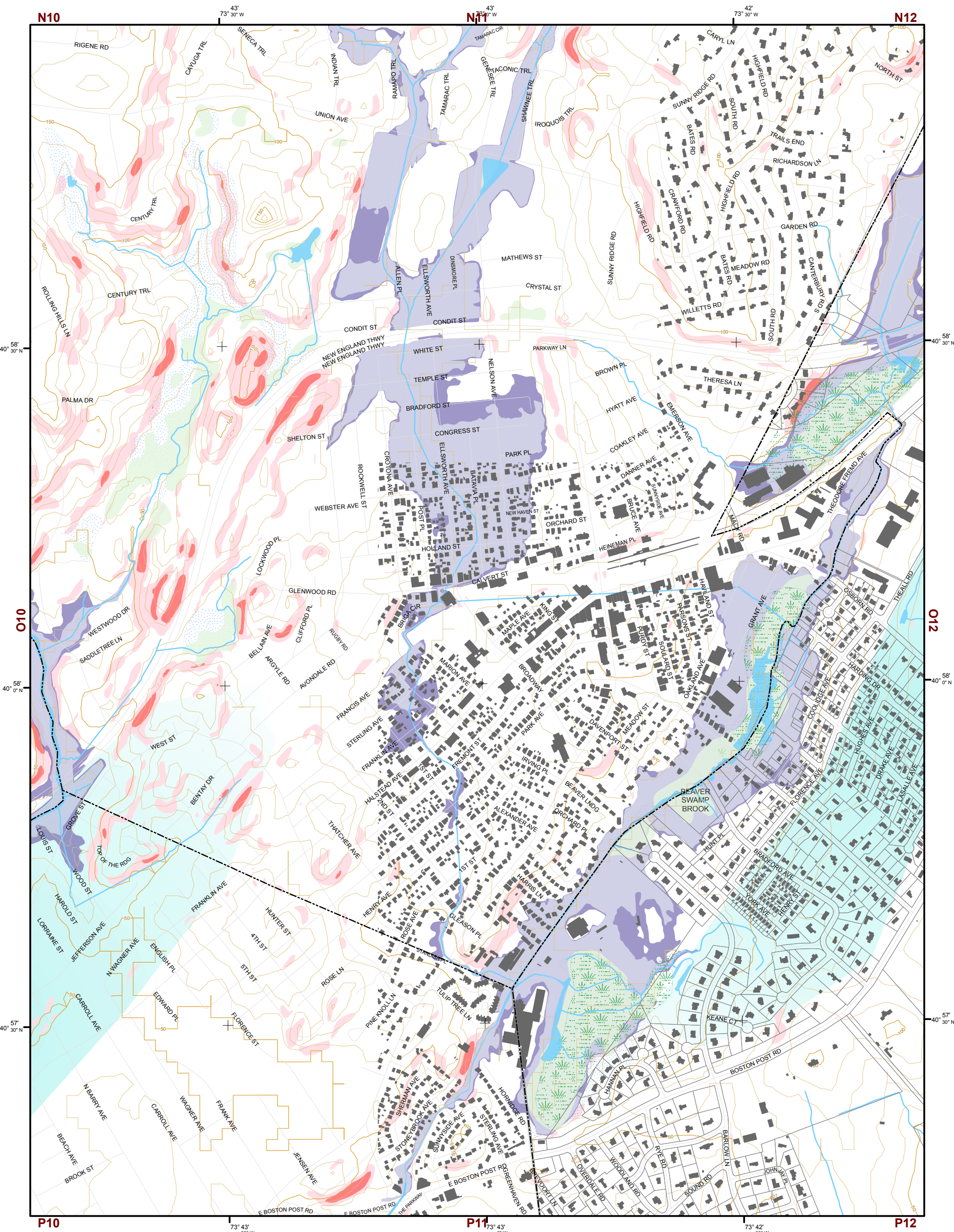
### TILE INDEX

M10	M11	M12	M13
N10	N11	N12	N13
O10	O11	O12	O13
P10	P11	P12	P13
Q10	Q11	Q12	Q13

This map is for general information only and should not be used for site specific planning. Data was collected from a wide range of local, state, and federal GIS databases "as is." Westchester County assumes no liability to any party for any loss or damage caused by errors or omissions resulting from negligence, accident or any other cause.

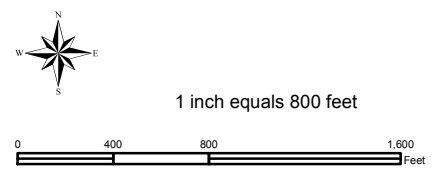
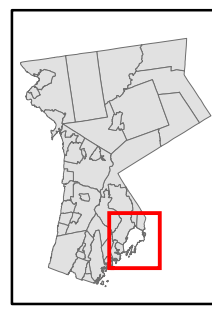


Westchester County Board of Legislators  
Andrew J. Span, Westchester County Executive



# Natural Resource Inventory Map # O11

## City of Rye



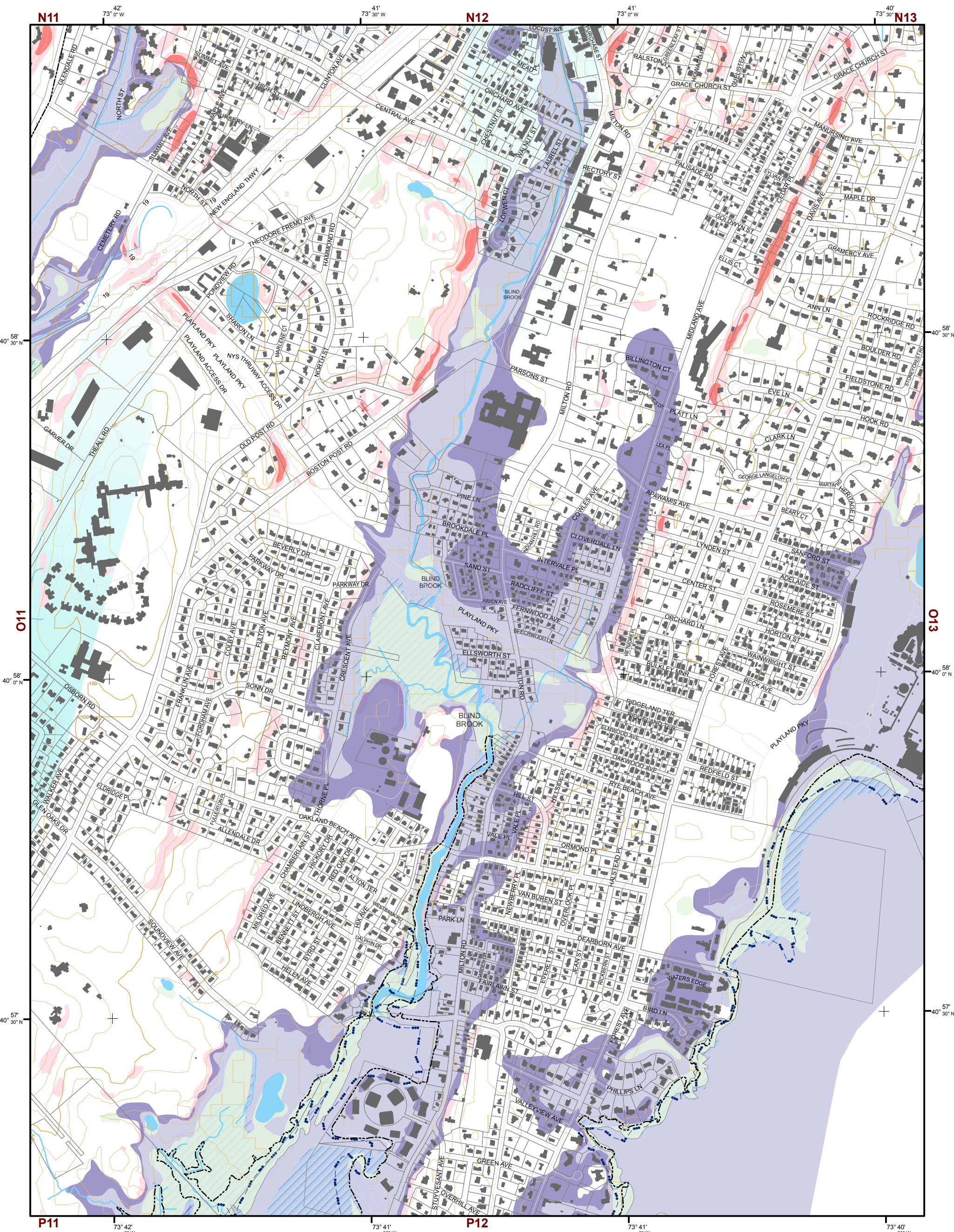
- Legend**
- 10' TOPO
  - 50' TOPO
  - Streams
  - Lakes, Ponds or Reservoirs
  - Aquifer
  - Drainage Divides
  - Hydric Soils
  - Municipal Boundaries
  - Tax Parcels
  - Buildings
  - Slope 15% - 25%
  - Slope 25% and Over
  - National Wetlands Inventory
  - NYSDEC Wetlands Greater than 12.4 acres
  - NYSDEC Wetlands Less than 12.4 acres
  - Floodplains 100
  - Floodplains 500
  - Tidal Wetlands

**TILE INDEX**

M10	M11	M12	M13
N10	N11	N12	N13
O10	O11	O12	O13
P10	P11	P12	P13

This map is for general information only and should not be used for site specific planning. Data was collected from a wide range of local, state, and federal GIS databases "as is." Westchester County assumes no liability to any party for any loss or damage caused by errors or omissions resulting from negligence, accident or any other cause.





# Natural Resource Inventory

## City of Rye

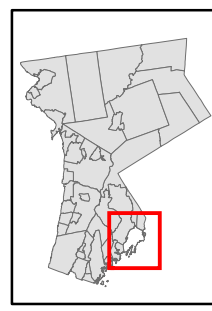
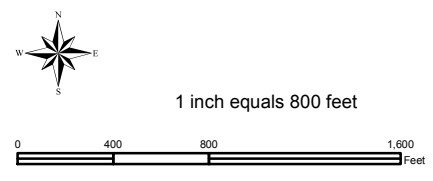
Map # O12

### TILE INDEX

M10	M11	M12	M13
N10	N11	N12	N13
O10	O11	O12	O13
P10	P11	P12	P13
Q10	Q11	Q12	Q13

### Legend

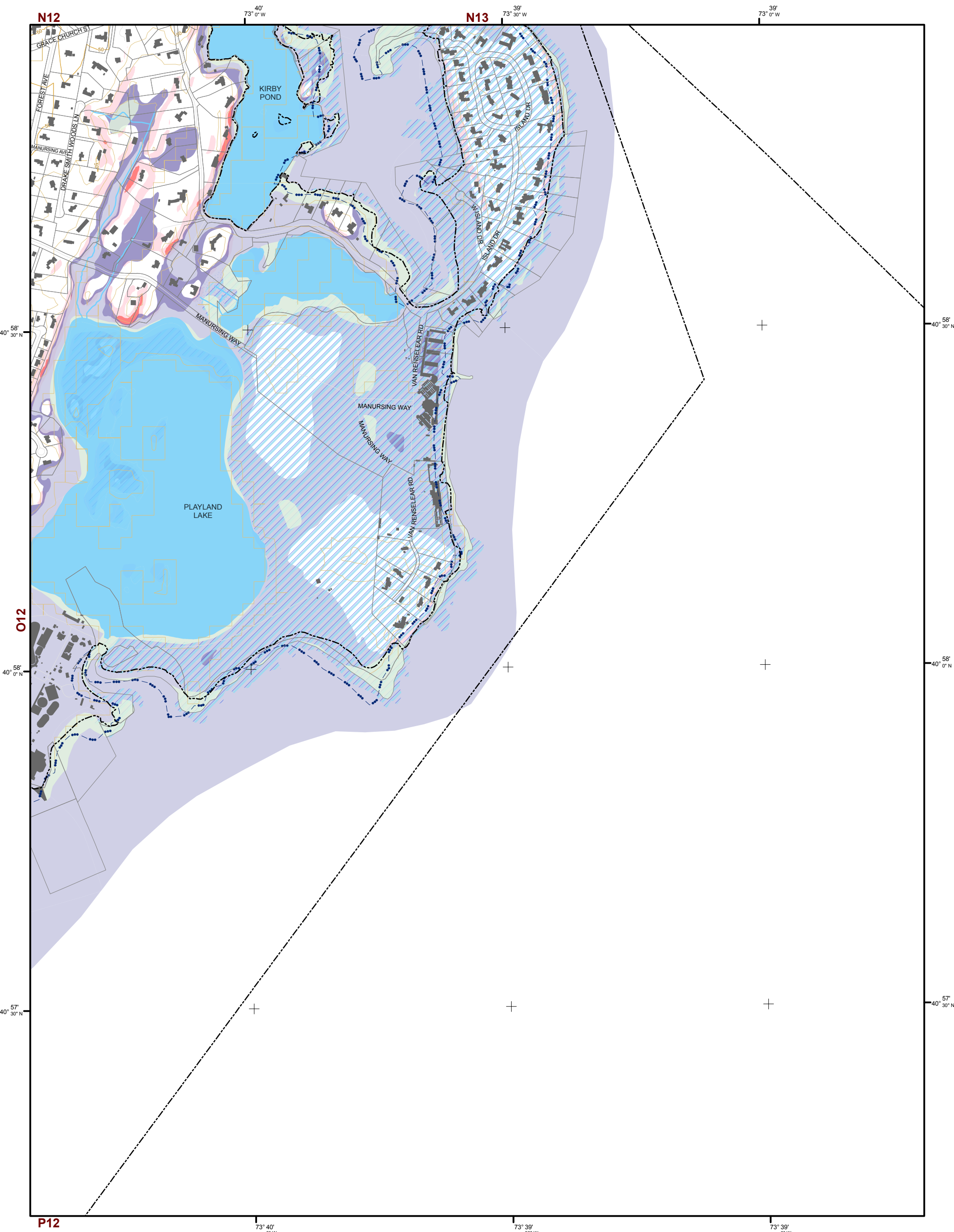
- 10' TOPO
- 50' TOPO
- Streams
- Lakes, Ponds or Reservoirs
- Aquifer
- Drainage Divides
- Hydric Soils
- Municipal Boundaries
- Tax Parcels
- Buildings
- Slope 15% - 25%
- Slope 25% and Over
- National Wetlands Inventory
- NYSDEC Wetlands Greater than 12.4 acres
- NYSDEC Wetlands Less than 12.4 acres
- Floodplains 100
- Floodplains 500
- Tidal Wetlands



This map is for general information only and should not be used for site specific planning. Data was collected from a wide range of local, state, and federal GIS databases "as is." Westchester County assumes no liability to any party for any loss or damage caused by errors or omissions resulting from negligence, accident or any other cause.

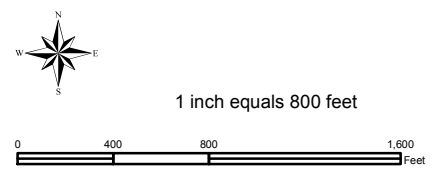
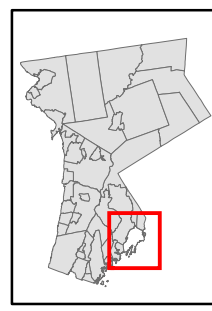


Westchester County Board of Legislators  
 Andrew J. Span, Westchester County Executive



# Natural Resource Inventory Map # O13

## City of Rye



### Legend

- 10' TOPO
- 50' TOPO
- Streams
- Lakes, Ponds or Reservoirs
- Aquifer
- Drainage Divides
- Hydric Soils
- Municipal Boundaries
- Tax Parcels
- Buildings
- Slope**
- 15% - 25%
- 25% and Over
- National Wetlands Inventory
- NYSDEC Wetlands**
- Greater than 12.4 acres
- Less than 12.4 acres
- Floodplains**
- 100
- 500
- Tidal Wetlands

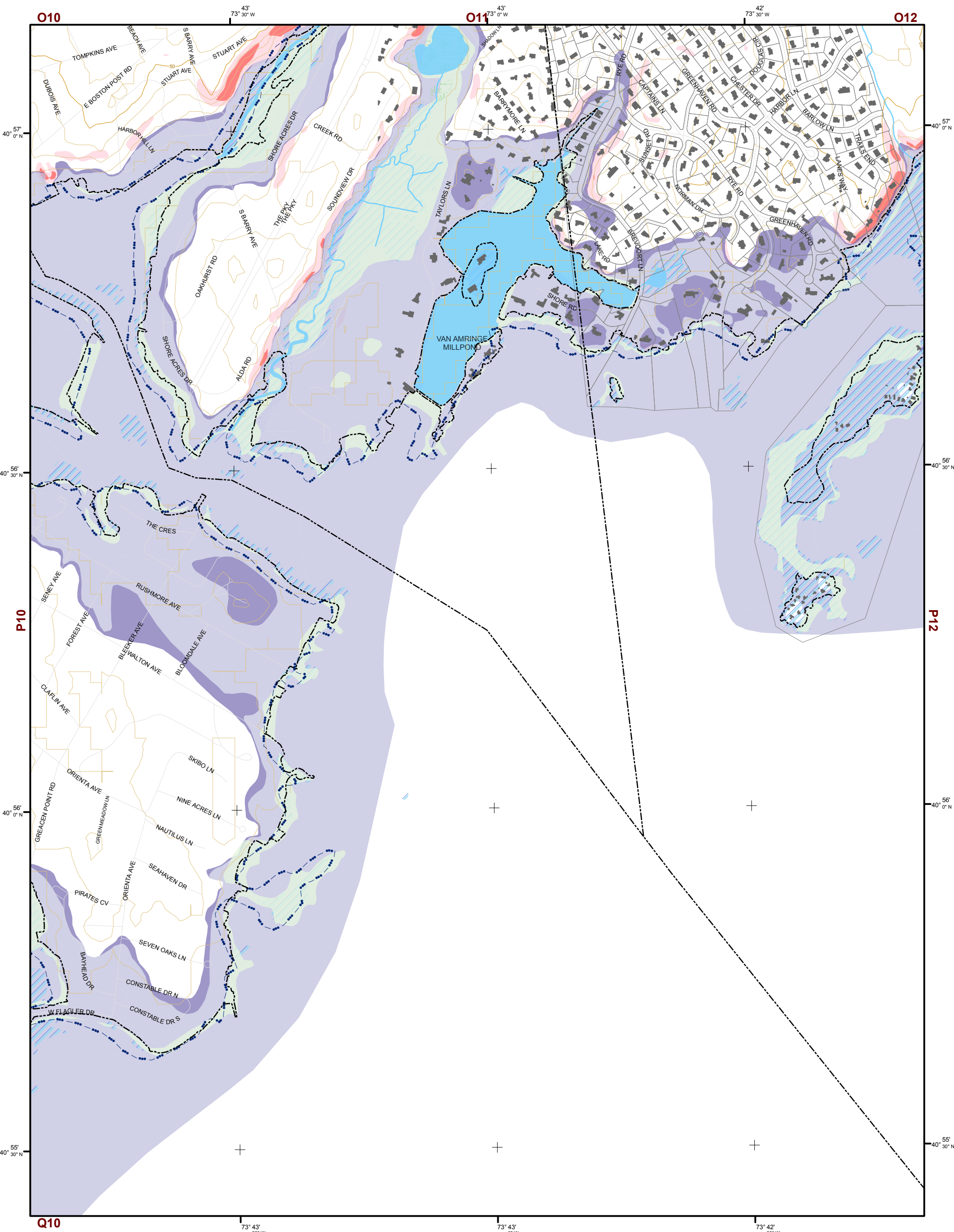
### TILE INDEX

M10	M11	M12	M13
N10	N11	N12	N13
O10	O11	O12	O13
P10	P11	P12	
Q10			

This map is for general information only and should not be used for site specific planning. Data was collected from a wide range of local, state, and federal GIS databases "as is." Westchester County assumes no liability to any party for any loss or damage caused by errors or omissions resulting from negligence, accident or any other cause.

**Westchester**  
 Andrew J. Spano, Westchester County Executive  
 County Board of Legislators

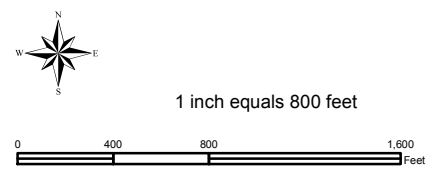
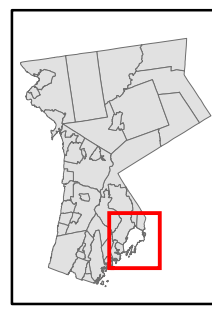




# Natural Resource Inventory

## City of Rye

Map # P11



- Legend**
- 10' TOPO
  - 50' TOPO
  - Streams
  - Lakes, Ponds or Reservoirs
  - Aquifer
  - Drainage Divides
  - Hydric Soils
  - Municipal Boundaries
  - Tax Parcels
  - Buildings
  - Slope**
    - 15% - 25%
    - 25% and Over
  - NYSDEC Wetlands**
    - Greater than 12.4 acres
    - Less than 12.4 acres
  - Floodplains**
    - 100
    - 500
  - Tidal Wetlands
  - National Wetlands Inventory

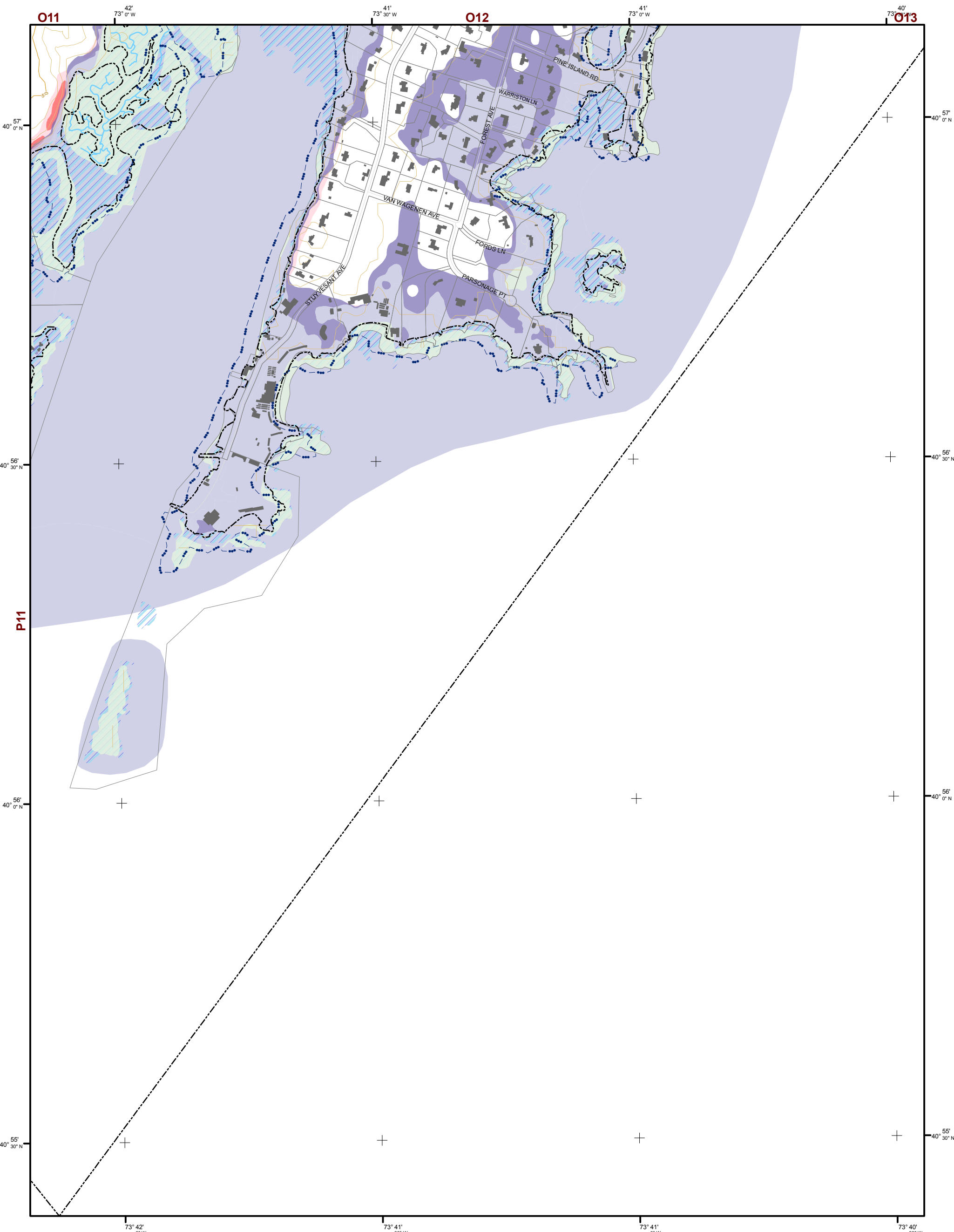
**TILE INDEX**

M10	M11	M12	M13
N10	N11	N12	N13
O10	O11	O12	O13
P10	P11	P12	P13
Q10	Q11	Q12	Q13

This map is for general information only and should not be used for site specific planning. Data was collected from a wide range of local, state, and federal GIS databases "as is." Westchester County assumes no liability to any party for any loss or damage caused by errors or omissions resulting from negligence, accident or any other cause.

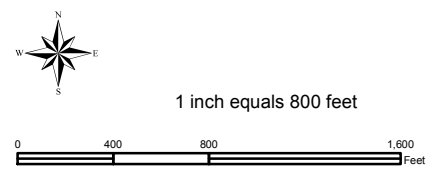
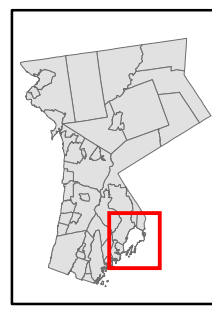


Westchester County Board of Legislators  
Andrew J. Span, Westchester County Executive



# Natural Resource Inventory Map # P12

## City of Rye



### Legend

- 10' TOPO
- 50' TOPO
- Streams
- Lakes, Ponds or Reservoirs
- Aquifer
- Drainage Divides
- Hydric Soils
- Municipal Boundaries
- Tax Parcels
- Buildings
- 15% - 25%
- 25% and Over
- National Wetlands Inventory
- Greater than 12.4 acres
- Less than 12.4 acres
- 100
- 500
- Tidal Wetlands

### TILE INDEX

M10	M11	M12	M13
N10	N11	N12	N13
O10	O11	O12	O13
P10	P11	P12	P13
Q10	Q11	Q12	Q13

This map is for general information only and should not be used for site specific planning. Data was collected from a wide range of local, state, and federal GIS databases "as is." Westchester County assumes no liability to any party for any loss or damage caused by errors or omissions resulting from negligence, accident or any other cause.



Westchester County Board of Legislators  
Andrew J. Spano, Westchester County Executive