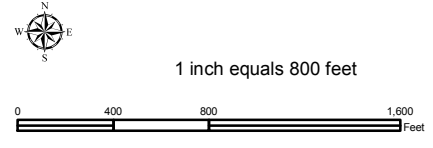
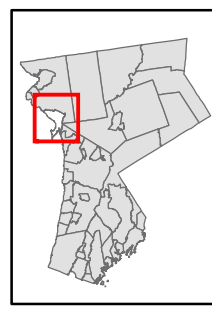


Natural Resource Inventory

Village of Croton-on-Hudson

Map # F04



Legend

- 10' TOPO
- 50' TOPO
- Streams
- Lakes, Ponds or Reservoirs
- Aquifer
- Drainage Divides
- Hydric Soils
- Municipal Boundaries
- Tax Parcels
- Buildings
- Slope 15% - 25%
- Slope 25% and Over
- National Wetlands Inventory

- NYSDEC Wetlands Greater than 12.4 acres
- NYSDEC Wetlands Less than 12.4 acres
- Floodplains 100
- Floodplains 500

TILE INDEX

F03	F04	F05	F06	F07
G04	G05	G06	G07	
H04	H05	H06	H07	

This map is for general information only and should not be used for site specific planning. Data was collected from a wide range of local, state, and federal GIS databases "as is." Westchester County assumes no liability to any party for any loss or damage caused by errors or omissions resulting from negligence, accident or any other cause.



Westchester County Board of Legislators
Andrew J. Spano, Westchester County Executive

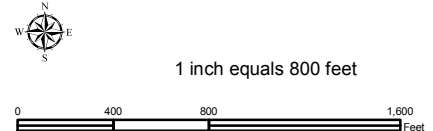
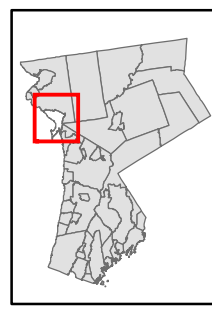


Natural Resource Inventory

Village of Croton-on-Hudson

Map # F05

TILE INDEX



Legend

- 10' TOPO
- 50' TOPO
- Streams
- Lakes, Ponds or Reservoirs
- Aquifer
- Drainage Divides
- Hydric Soils
- Municipal Boundaries
- Tax Parcels
- Buildings
- Slope 15% - 25%
- Slope 25% and Over
- National Wetlands Inventory

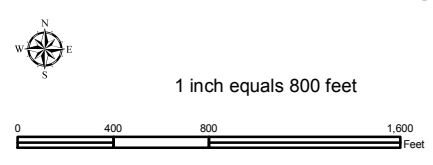
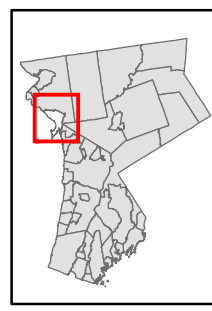
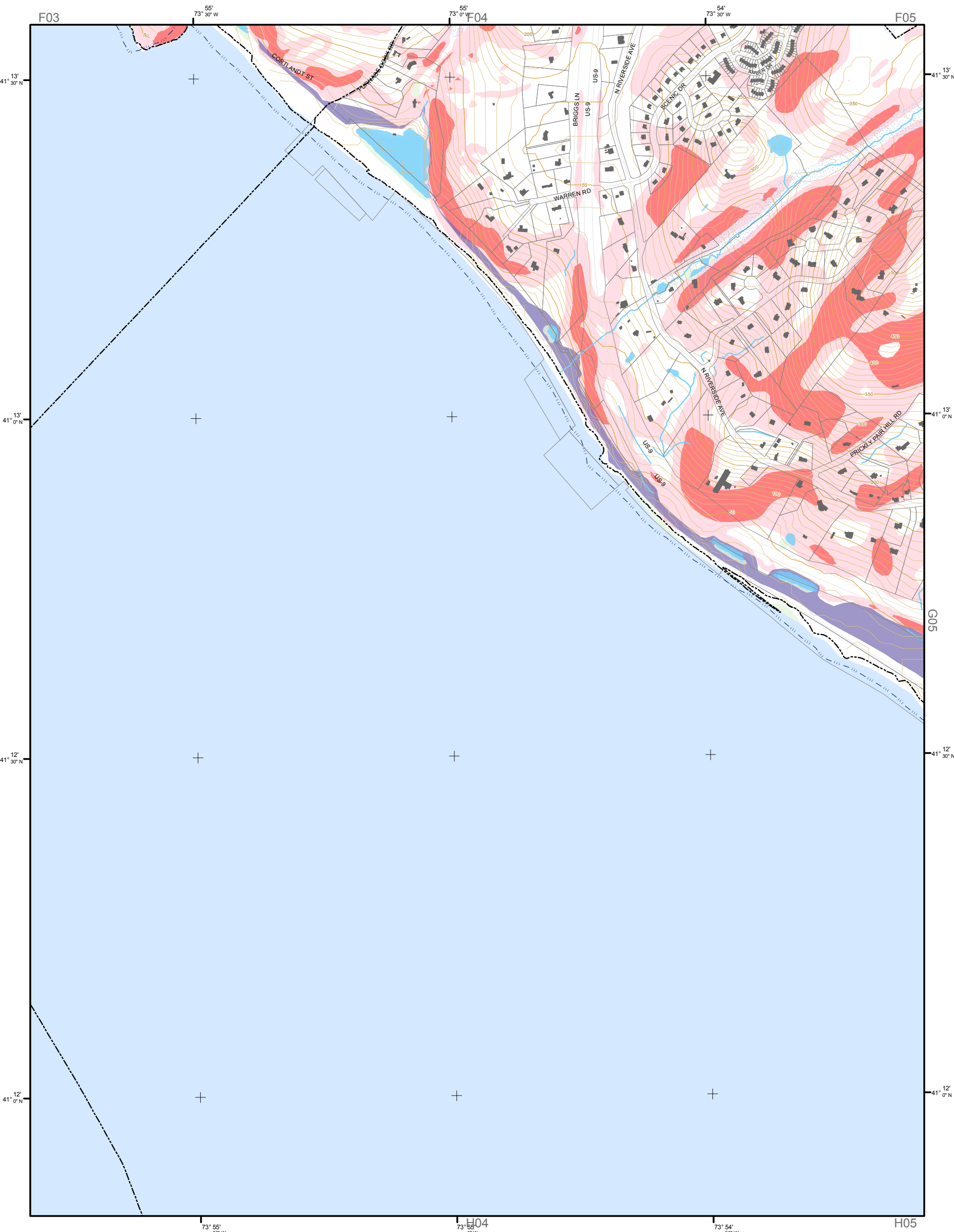
- NYSDEC Wetlands Greater than 12.4 acres
- NYSDEC Wetlands Less than 12.4 acres
- Floodplains 100
- Floodplains 500

F03	F04	F05	F06	F07
G04	G05	G06	G07	
H04	H05	H06	H07	

This map is for general information only and should not be used for site specific planning. Data was collected from a wide range of local, state, and federal GIS databases "as is." Westchester County assumes no liability to any party for any loss or damage caused by errors or omissions resulting from negligence, accident or any other cause.



Westchester County Board of Legislators



Natural Resource Inventory

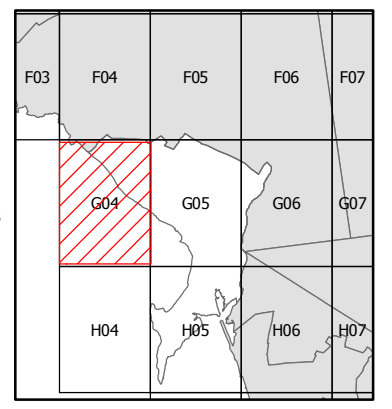
Village of Croton-on-Hudson

Map # G04

Legend

- 10' TOPO
- 50' TOPO
- Streams
- Lakes, Ponds or Reservoirs
- Aquifer
- Drainage Divides
- Hydric Soils
- Municipal Boundaries
- Tax Parcels
- Buildings
- Slope**
- 15% - 25%
- 25% and Over
- NYSDEC Wetlands**
- Greater than 12.4 acres
- Less than 12.4 acres
- Floodplains**
- 100
- 500
- National Wetlands Inventory

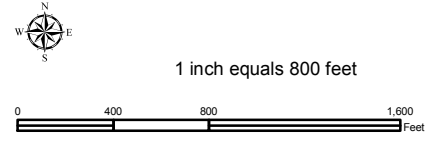
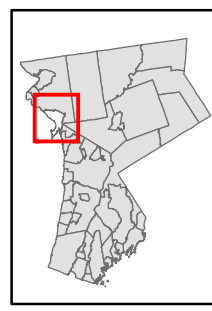
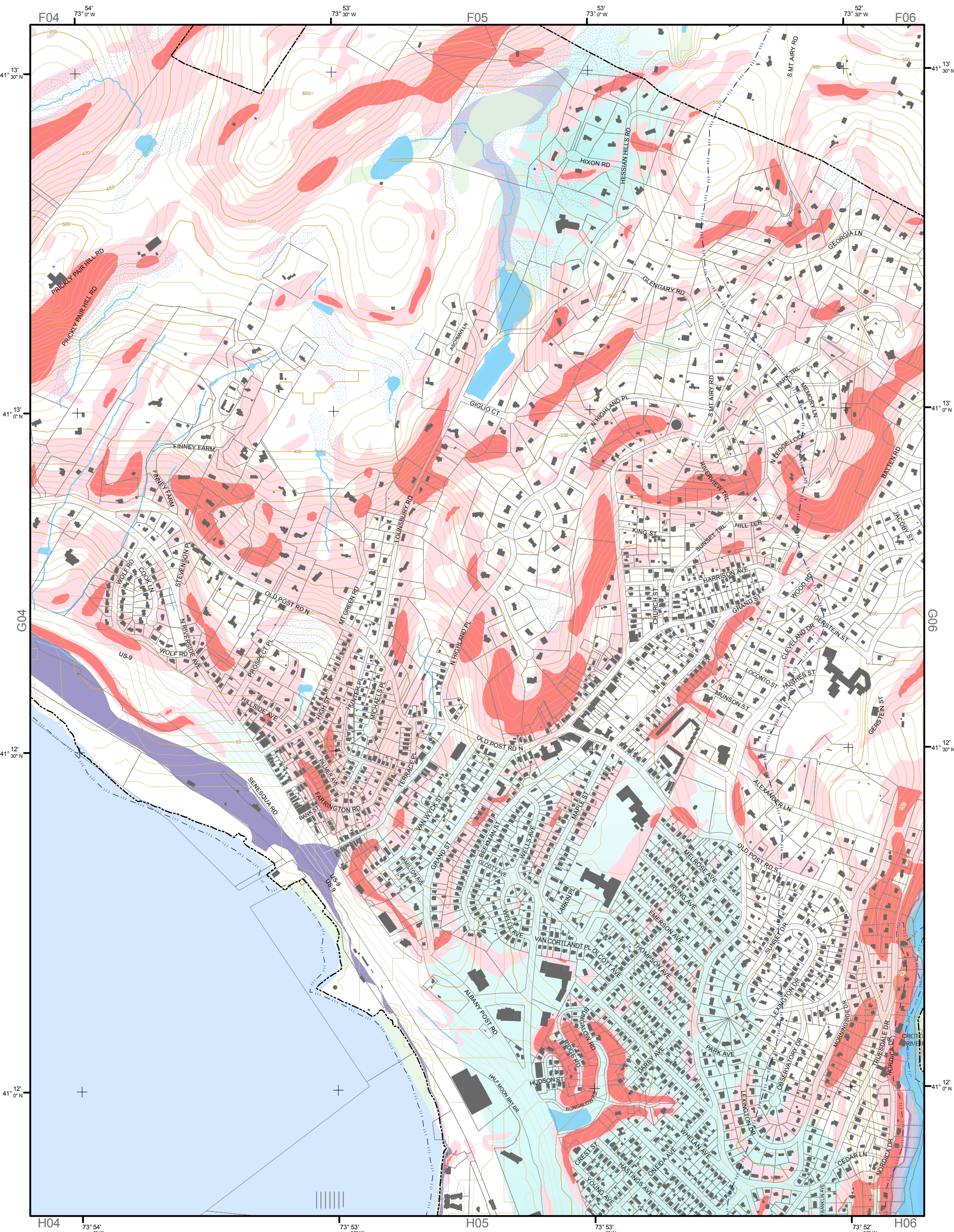
TILE INDEX



This map is for general information only and should not be used for site specific planning. Data was collected from a wide range of local, state, and federal GIS databases "as is." Westchester County assumes no liability to any party for any loss or damage caused by errors or omissions resulting from negligence, accident or any other cause.



Westchester
County
Executive
Andrew J. Spano, Westchester County Executive
County Board of Legislators



Natural Resource Inventory

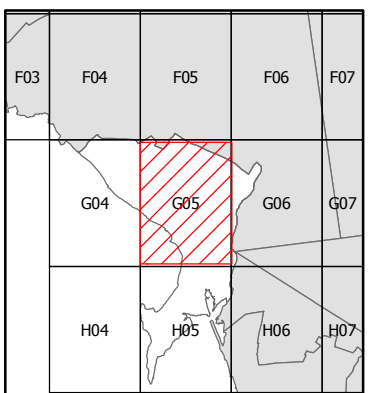
Village of Croton-on-Hudson

Map # G05

Legend

- 10' TOPO
- 50' TOPO
- Streams
- Lakes, Ponds or Reservoirs
- Aquifer
- Drainage Divides
- Hydric Soils
- Municipal Boundaries
- Tax Parcels
- Buildings
- Slope**
- 15% - 25%
- 25% and Over
- National Wetlands Inventory
- NYSDEC Wetlands**
- Greater than 12.4 acres
- Less than 12.4 acres
- Floodplains**
- 100
- 500

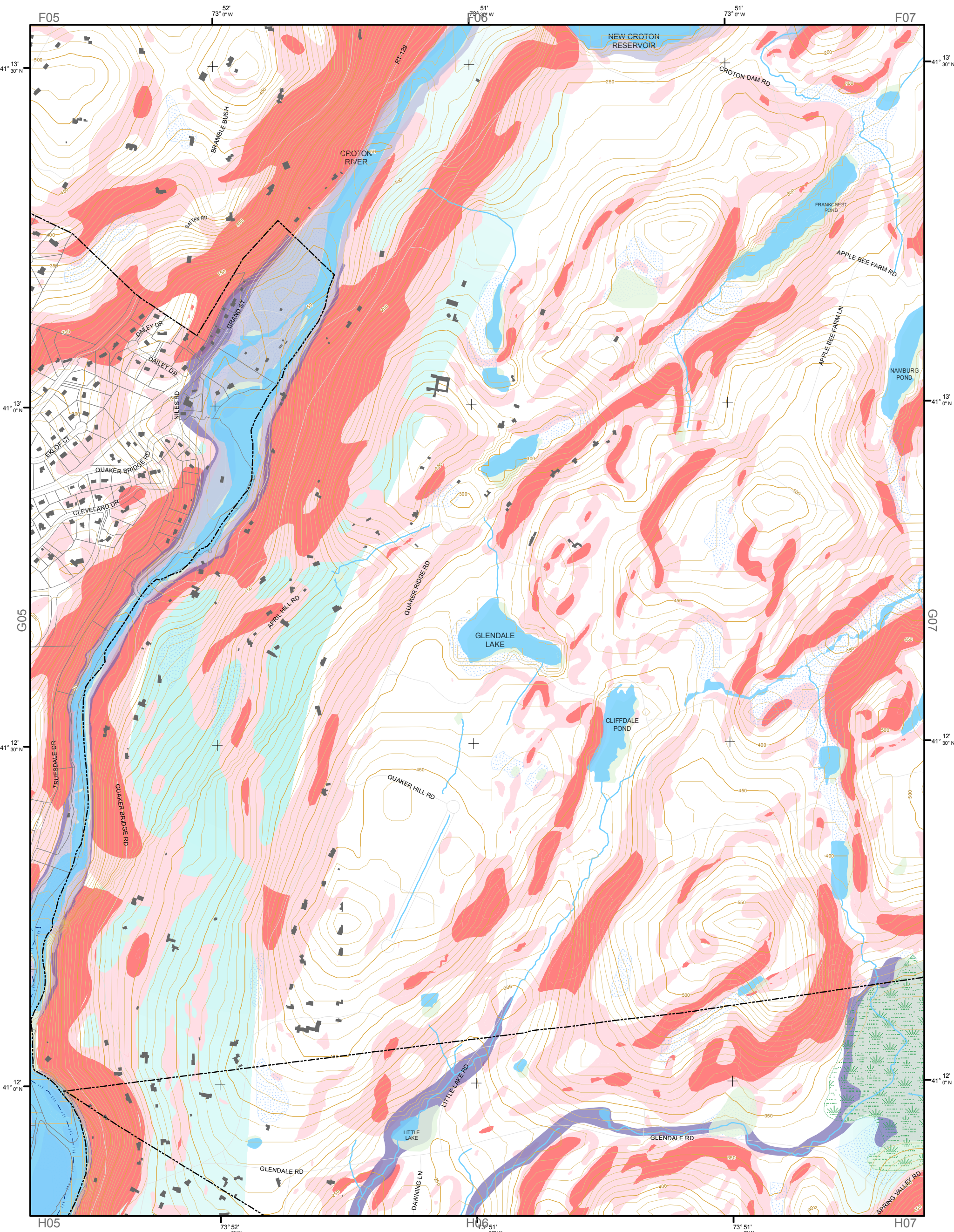
TILE INDEX



This map is for general information only and should not be used for site specific planning. Data was collected from a wide range of local, state, and federal GIS databases "as is." Westchester County assumes no liability to any party for any loss or damage caused by errors or omissions resulting from negligence, accident or any other cause.



Westchester County Board of Legislators
 Andrew J. Span, Westchester County Executive

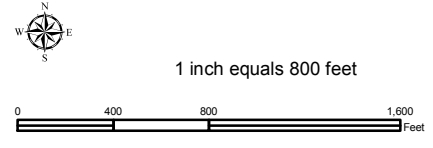
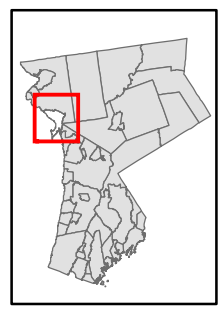
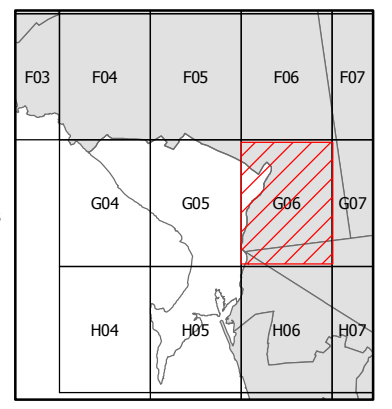


Natural Resource Inventory

Village of Croton-on-Hudson

Map # **G06**

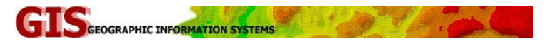
TILE INDEX



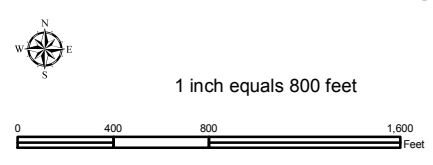
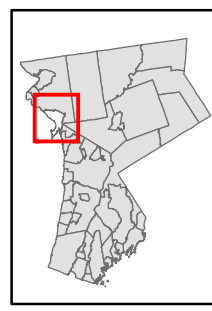
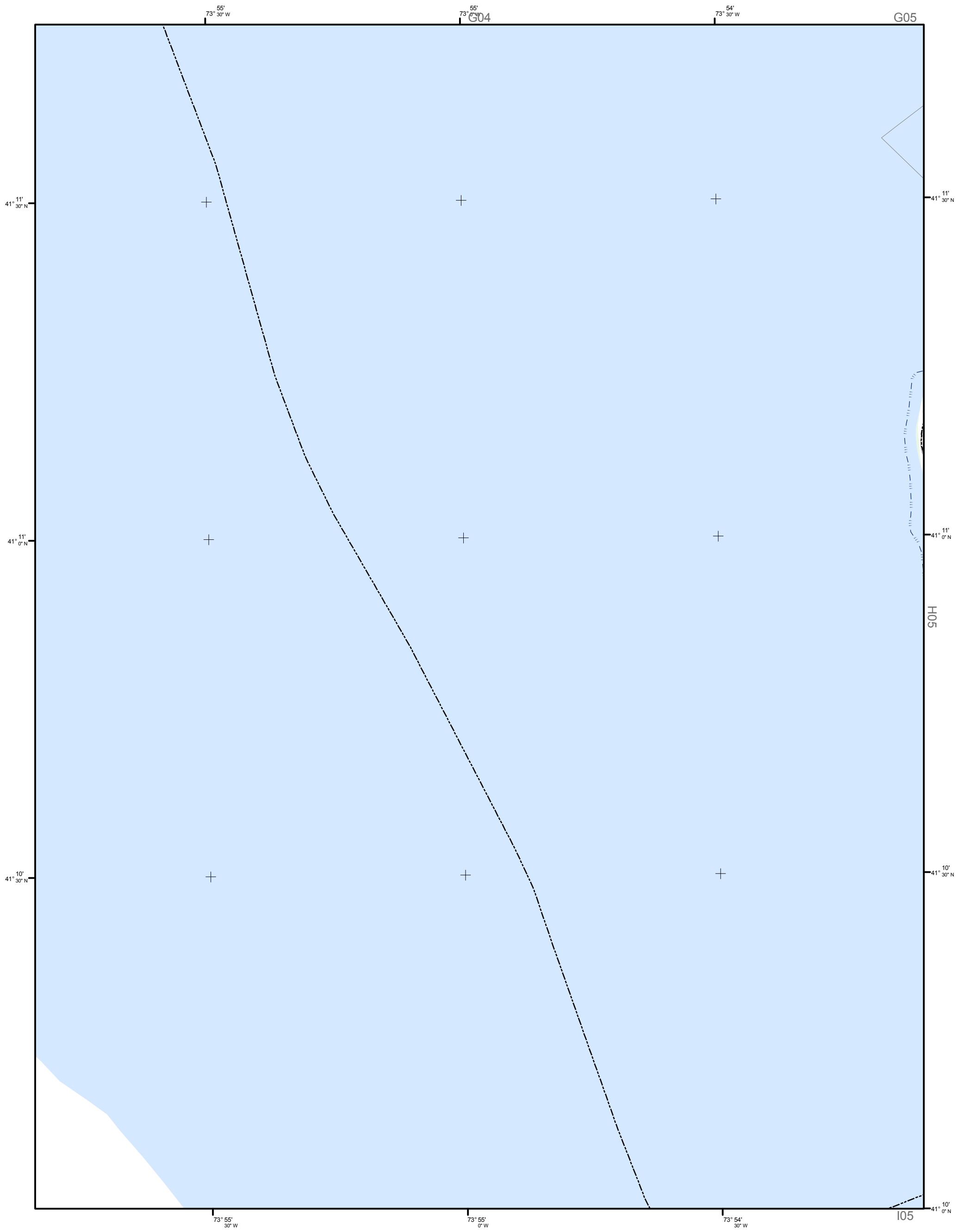
Legend

- 10' TOPO
- 50' TOPO
- Streams
- Lakes, Ponds or Reservoirs
- Aquifer
- Drainage Divides
- Hydric Soils
- Municipal Boundaries
- Tax Parcels
- Buildings
- Slope**
- 15% - 25%
- 25% and Over
- NYSDEC Wetlands**
- Greater than 12.4 acres
- Less than 12.4 acres
- Floodplains**
- 100
- 500
- National Wetlands Inventory

This map is for general information only and should not be used for site specific planning. Data was collected from a wide range of local, state, and federal GIS databases "as is." Westchester County assumes no liability to any party for any loss or damage caused by errors or omissions resulting from negligence, accident or any other cause.



Westchester
County Board of Legislators
Andrew J. Span, Westchester County Executive



Natural Resource Inventory

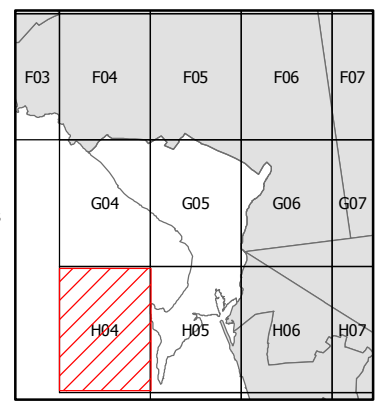
Village of Croton-on-Hudson

Map # H04

Legend

- 10' TOPO
- 50' TOPO
- Streams
- Lakes, Ponds or Reservoirs
- Aquifer
- Drainage Divides
- Hydic Soils
- Municipal Boundaries
- Tax Parcels
- Buildings
- Slope**
 - 15% - 25%
 - 25% and Over
- NYSDEC Wetlands**
 - Greater than 12.4 acres
 - Less than 12.4 acres
- Floodplains**
 - 100
 - 500
- National Wetlands Inventory

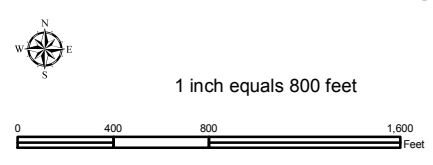
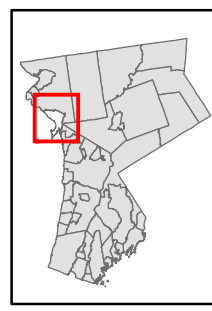
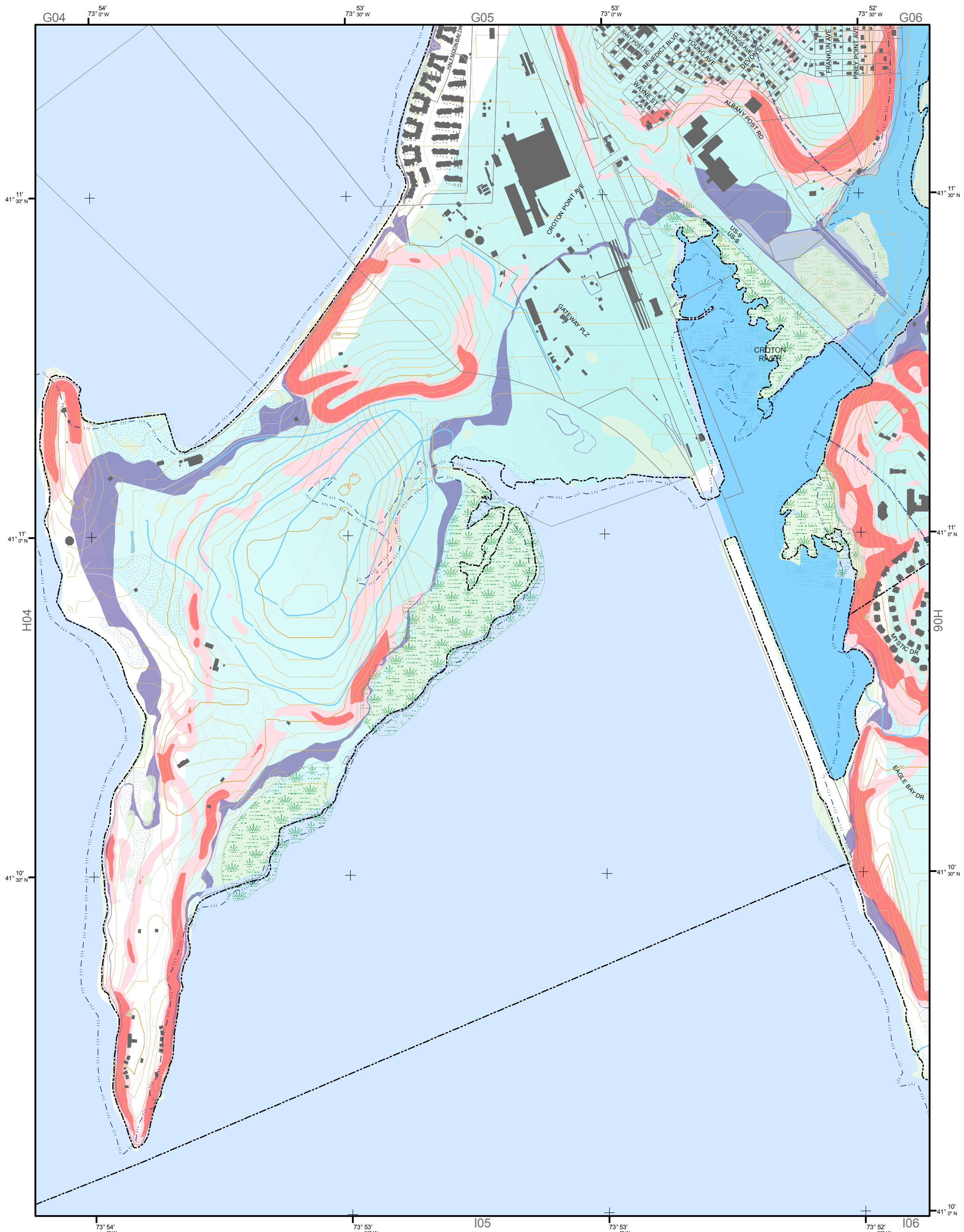
TILE INDEX



This map is for general information only and should not be used for site specific planning. Data was collected from a wide range of local, state, and federal GIS databases "as is." Westchester County assumes no liability to any party for any loss or damage caused by errors or omissions resulting from negligence, accident or any other cause.



Westchester
COUNTY
Andrew J. Spano, Westchester County Executive
County Board of Legislators



Natural Resource Inventory

Village of Croton-on-Hudson

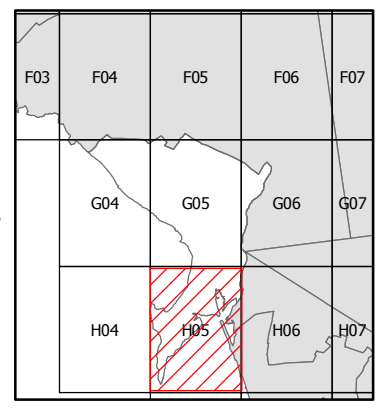
Map # H05

Legend

- 10' TOPO
- 50' TOPO
- Streams
- Lakes, Ponds or Reservoirs
- Aquifer
- Drainage Divides
- Hydric Soils
- Municipal Boundaries
- Tax Parcels
- Buildings
- Slope**
- 15% - 25%
- 25% and Over
- National Wetlands Inventory

- NYSDEC Wetlands**
- Greater than 12.4 acres
- Less than 12.4 acres
- Floodplains**
- 100
- 500

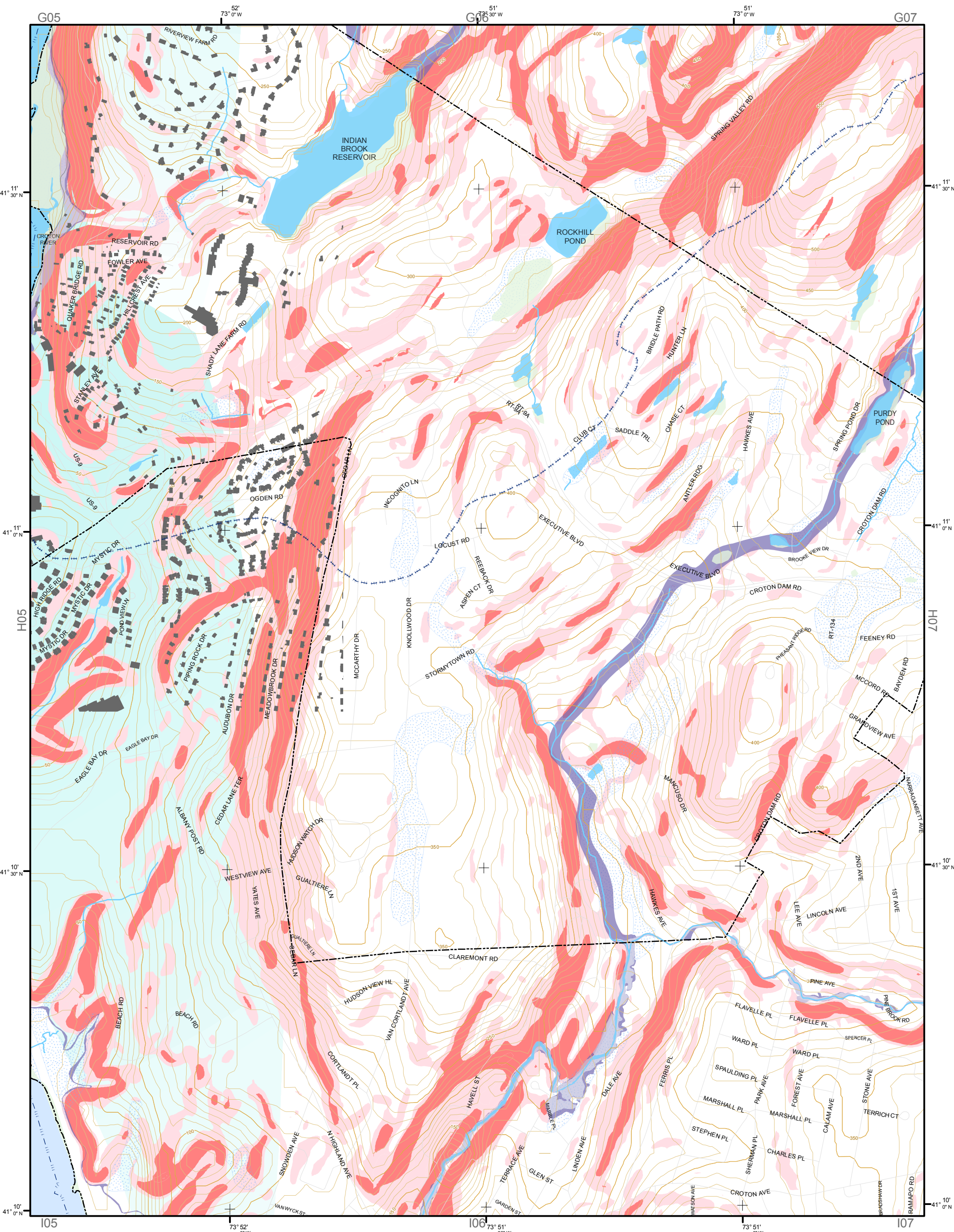
TILE INDEX



This map is for general information only and should not be used for site specific planning. Data was collected from a wide range of local, state, and federal GIS databases "as is." Westchester County assumes no liability to any party for any loss or damage caused by errors or omissions resulting from negligence, accident or any other cause.



Westchester County Board of Legislators
Andrew J. Spano, Westchester County Executive

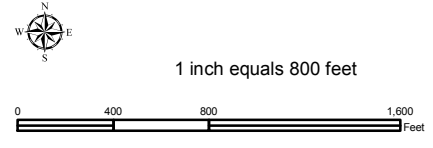
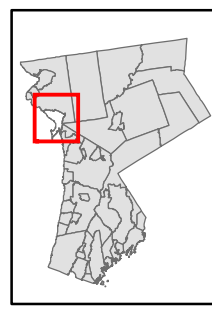


Natural Resource Inventory

Village of Croton-on-Hudson

Map # H06

TILE INDEX



Legend

- 10' TOPO
- 50' TOPO
- Streams
- Lakes, Ponds or Reservoirs
- Aquifer
- Drainage Divides
- Hydric Soils
- Municipal Boundaries
- Tax Parcels
- Buildings
- Slope 15% - 25%
- Slope 25% and Over
- National Wetlands Inventory
- NYSDEC Wetlands Greater than 12.4 acres
- NYSDEC Wetlands Less than 12.4 acres
- Floodplains 100
- Floodplains 500

F03	F04	F05	F06	F07
G04	G05	G06	G07	
H04	H05	H06	H07	

This map is for general information only and should not be used for site specific planning. Data was collected from a wide range of local, state, and federal GIS databases "as is." Westchester County assumes no liability to any party for any loss or damage caused by errors or omissions resulting from negligence, accident or any other cause.



Westchester County
 Andrew J. Span, Westchester County Executive
 County Board of Legislators