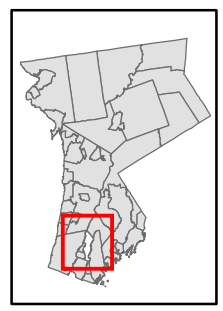


# Natural Resource Inventory

## Town of Eastchester

Map # N08

TILE INDEX



1 inch equals 800 feet



### Legend

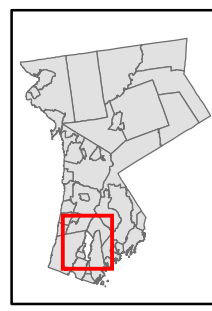
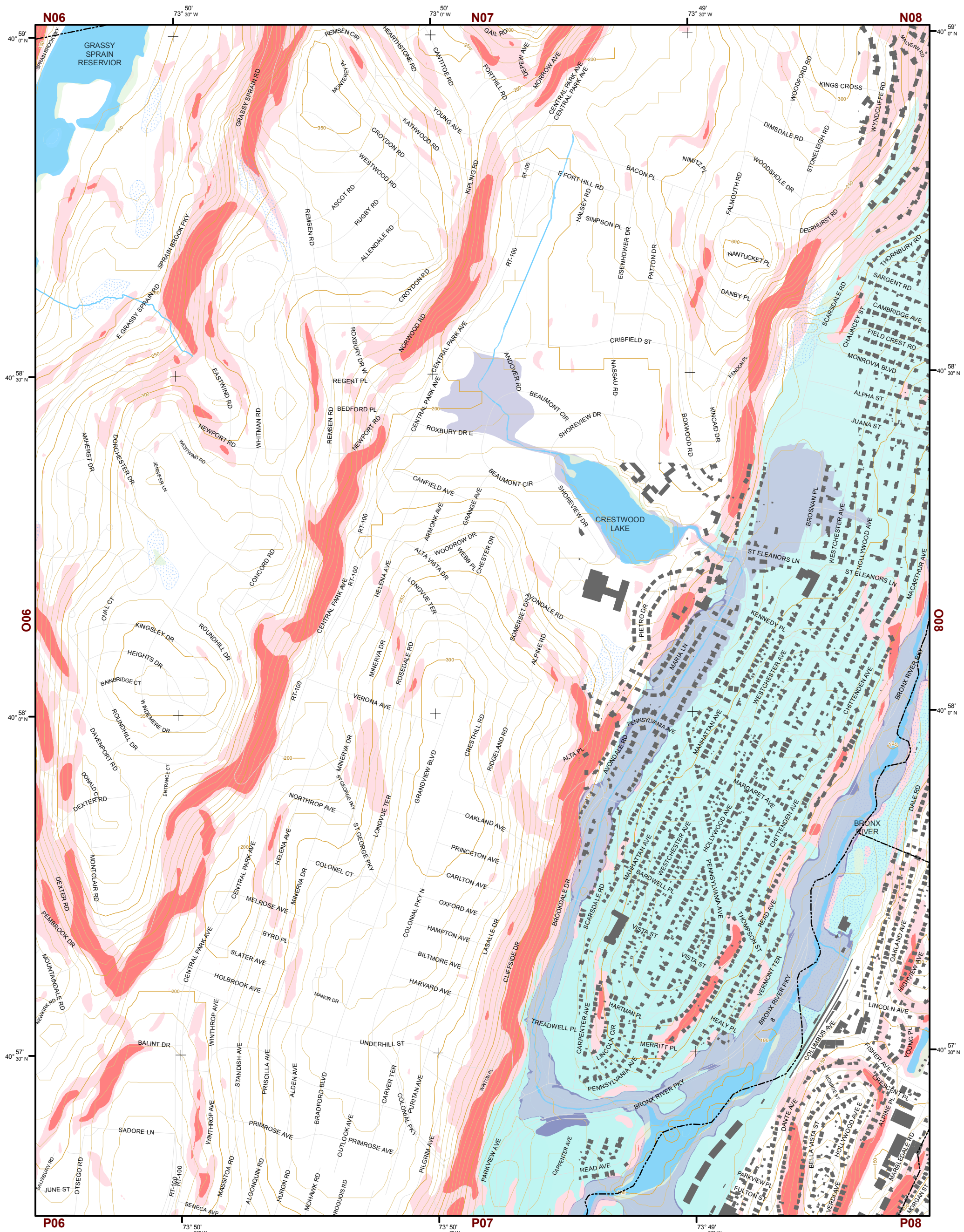
- 10' TOPO
- 50' TOPO
- Streams
- Lakes, Ponds or Reservoirs
- Aquifer
- Drainage Divides
- Hydric Soils
- Municipal Boundaries
- Buildings
- 15% - 25%
- 25% and Over
- National Wetlands Inventory
- Greater than 12.4 acres
- Less than 12.4 acres
- 100
- 500
- Tidal Wetlands

N06	N07	N08	N09	N10
O06	O07	O08	O09	O10
P06	P07	P08	P09	P10
Q06	Q07	Q08	Q09	Q10

This map is for general information only and should not be used for site specific planning. Data was collected from a wide range of local, state, and federal GIS databases "as is". Westchester County assumes no liability to any party for any loss or damage caused by errors or omissions resulting from negligence, accident or any other cause.



Westchester County Board of Legislators  
Andrew J. Span, Westchester County Executive



1 inch equals 800 feet



# Natural Resource Inventory

## Town of Eastchester

Map # 007

### Legend

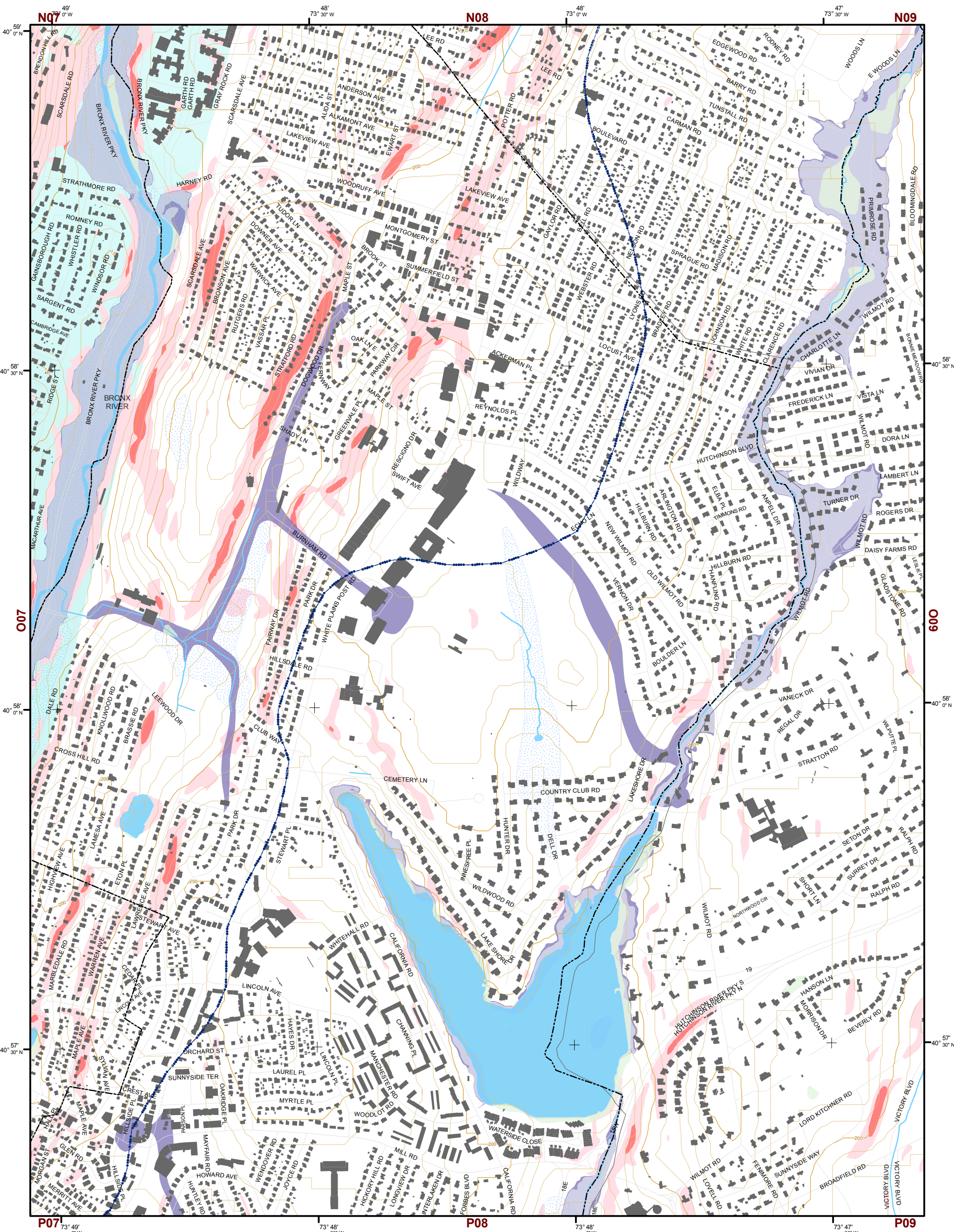
- 10' TOPO
- 50' TOPO
- Streams
- Lakes, Ponds or Reservoirs
- Aquifer
- Drainage Divides
- Hydric Soils
- Municipal Boundaries
- Buildings
- 15% - 25%
- 25% and Over
- National Wetlands Inventory
- NYSDEC Wetlands  
Greater than 12.4 acres
- NYSDEC Wetlands  
Less than 12.4 acres
- Floodplains  
100
- Floodplains  
500
- Tidal Wetlands

### TILE INDEX

N06	N07	N08	N09	N10
O06	O07	O08	O09	O10
P06	P07	P08	P09	P10
Q06	Q07	Q08	Q09	Q10

This map is for general information only and should not be used for site specific planning. Data was collected from a wide range of local, state, and federal GIS databases "as is." Westchester County assumes no liability to any party for any loss or damage caused by errors or omissions resulting from negligence, accident or any other cause.



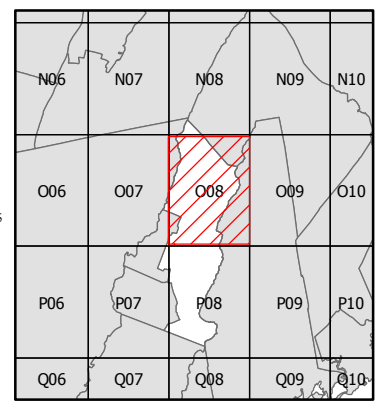


# Natural Resource Inventory

## Town of Eastchester

Map # O08

TILE INDEX

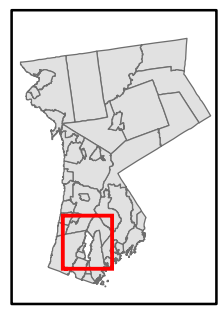


### Legend

- 10' TOPO
- 50' TOPO
- Streams
- Lakes, Ponds or Reservoirs
- Aquifer
- Drainage Divides
- Hydric Soils
- Municipal Boundaries
- Buildings
- Slope 15% - 25%
- Slope 25% and Over
- National Wetlands Inventory
- NYSDEC Wetlands Greater than 12.4 acres
- NYSDEC Wetlands Less than 12.4 acres
- Floodplains 100
- Floodplains 500
- Tidal Wetlands

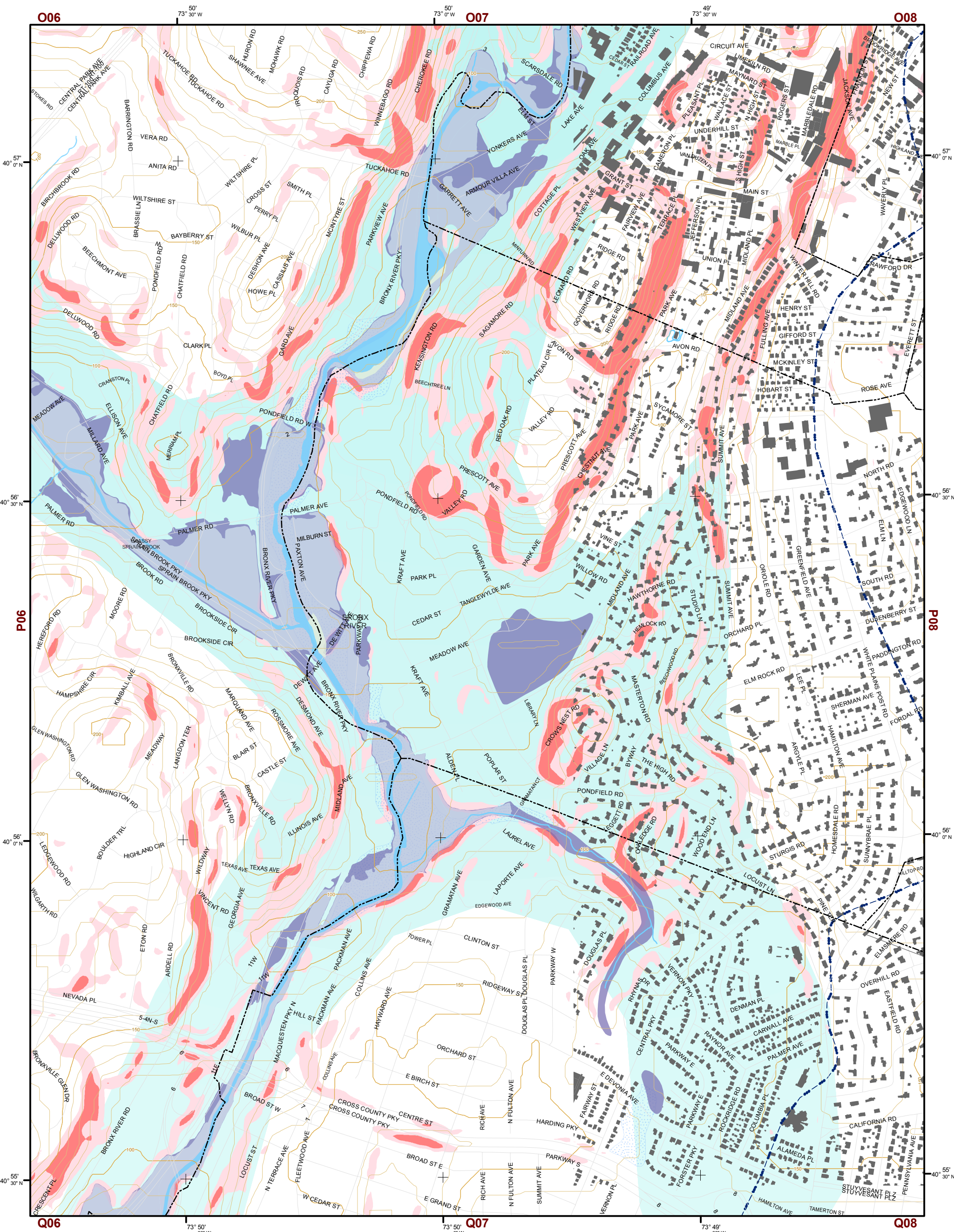


1 inch equals 800 feet



This map is for general information only and should not be used for site specific planning. Data was collected from a wide range of local, state, and federal GIS databases "as is." Westchester County assumes no liability to any party for any loss or damage caused by errors or omissions resulting from negligence, accident or any other cause.



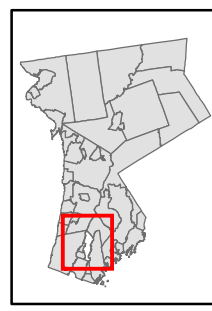


# Natural Resource Inventory

## Town of Eastchester

Map # P07

TILE INDEX



1 inch equals 800 feet

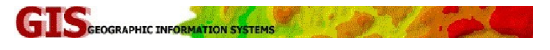


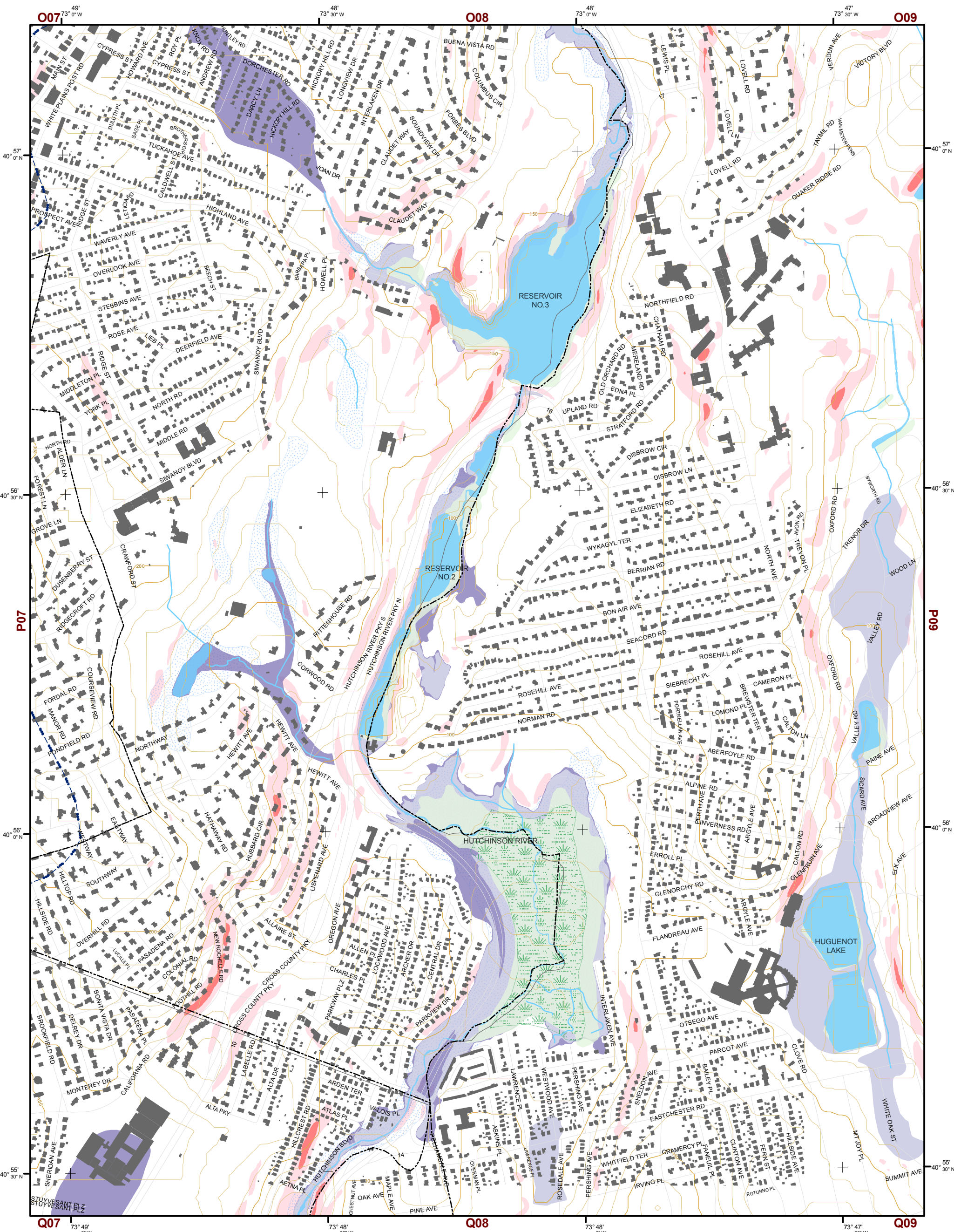
### Legend

- 10' TOPO
- 50' TOPO
- Streams
- Lakes, Ponds or Reservoirs
- Aquifer
- Drainage Divides
- Hydric Soils
- Municipal Boundaries
- Buildings
- Slope 15% - 25%
- Slope 25% and Over
- National Wetlands Inventory
- NYSDEC Wetlands Greater than 12.4 acres
- NYSDEC Wetlands Less than 12.4 acres
- Floodplains 100
- Floodplains 500
- Tidal Wetlands

N06	N07	N08	N09	N10
O06	O07	O08	O09	O10
P06	P07	P08	P09	P10
Q06	Q07	Q08	Q09	Q10

This map is for general information only and should not be used for site specific planning. Data was collected from a wide range of local, state, and federal GIS databases "as is." Westchester County assumes no liability to any party for any loss or damage caused by errors or omissions resulting from negligence, accident or any other cause.





# Natural Resource Inventory Map # P08

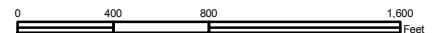
## Town of Eastchester

### TILE INDEX

N06	N07	N08	N09	N10
Q06	Q07	Q08	Q09	Q10
P06	P07	P08	P09	P10
Q06	Q07	Q08	Q09	Q10



1 inch equals 800 feet



### Legend

- 10' TOPO
- 50' TOPO
- Streams
- Lakes, Ponds or Reservoirs
- Aquifer
- Drainage Divides
- Hydic Soils
- Municipal Boundaries
- Buildings
- 15% - 25%
- 25% and Over
- National Wetlands Inventory
- NYSDEC Wetlands  
Greater than 12.4 acres
- NYSDEC Wetlands  
Less than 12.4 acres
- Floodplains  
100
- Floodplains  
500
- Tidal Wetlands

This map is for general information only and should not be used for site specific planning. Data was collected from a wide range of local, state, and federal GIS databases "as is." Westchester County assumes no liability to any party for any loss or damage caused by errors or omissions resulting from negligence, accident or any other cause.



Westchester County  
Andrew J. Spano, Westchester County Executive  
County Board of Legislators