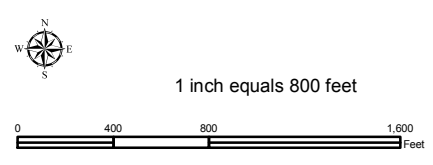
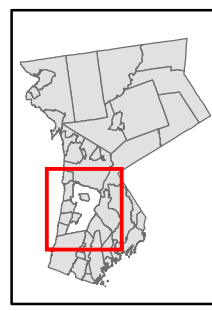


Natural Resource Inventory

Town of Greenburgh

Map # K07

TILE INDEX



Legend

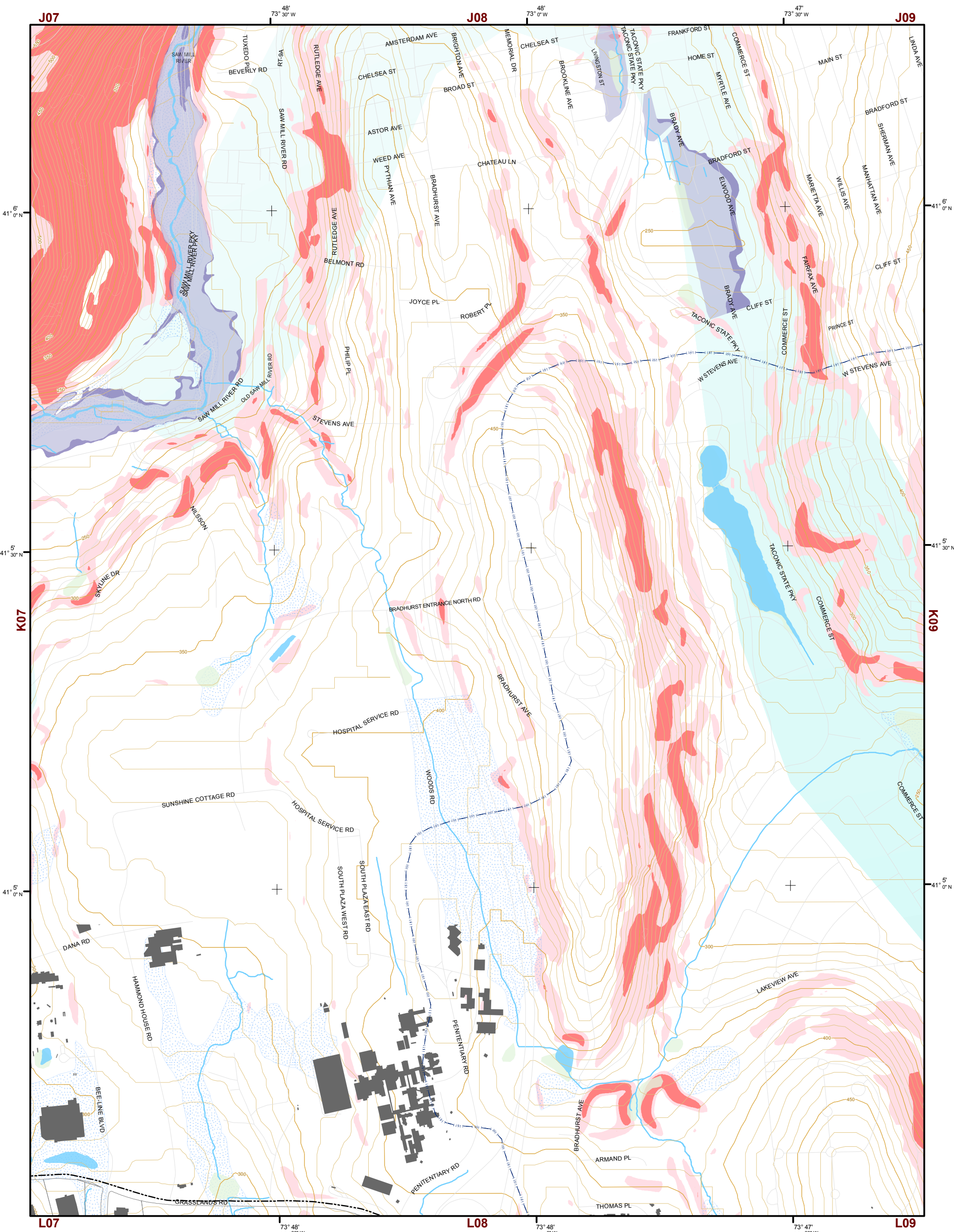
- 10' TOPO
- 50' TOPO
- Streams
- Lakes, Ponds or Reservoirs
- Aquifer
- Drainage Divides
- Hydric Soils
- Municipal Boundaries
- Tax Parcels
- Buildings
- Slope**
 - 15% - 25%
 - 25% and Over
- NYSDEC Wetlands**
 - Greater than 12.4 acres
 - Less than 12.4 acres
- Floodplains**
 - 100
 - 500
- National Wetlands Inventory

K05	K06	K07	K08	K09	K10
L05	L06	L07	L08	L09	L10
M05	M06	M07	M08	M09	M10
N05	N06	N07	N08	N09	N10
O05	O06	O07	O08	O09	O10

This map is for general information only and should not be used for site specific planning. Data was collected from a wide range of local, state, and federal GIS databases "as is." Westchester County assumes no liability to any party for any loss or damage caused by errors or omissions resulting from negligence, accident or any other cause.



Westchester County Board of Legislators
 Andrew J. Span, Westchester County Executive

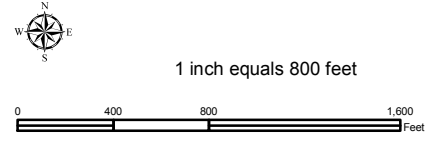
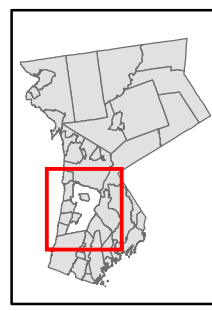


Natural Resource Inventory

Town of Greenburgh

Map # K08

TILE INDEX



Legend

- 10' TOPO
- 50' TOPO
- Streams
- Lakes, Ponds or Reservoirs
- Aquifer
- Drainage Divides
- Hydric Soils
- Municipal Boundaries
- Tax Parcels
- Buildings
- Slope 15% - 25%
- Slope 25% and Over
- National Wetlands Inventory

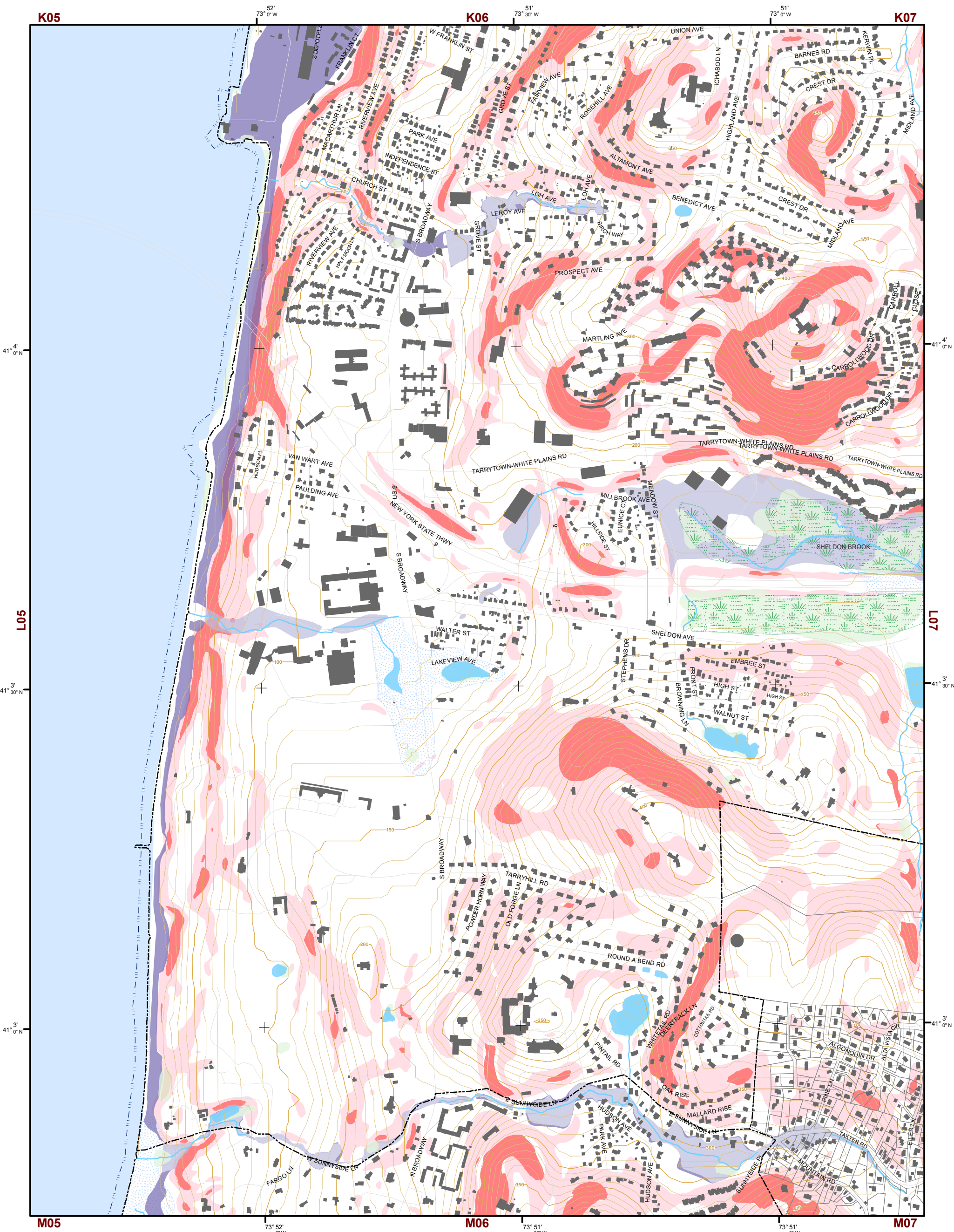
- NYSDEC Wetlands Greater than 12.4 acres
- NYSDEC Wetlands Less than 12.4 acres
- Floodplains 100
- Floodplains 500

K05	K06	K07	K08	K09	K10
L05	L06	L07	L08	L09	L10
M05	M06	M07	M08	M09	M10
N05	N06	N07	N08	N09	N10
O05	O06	O07	O08	O09	O10

This map is for general information only and should not be used for site specific planning. Data was collected from a wide range of local, state, and federal GIS databases "as is." Westchester County assumes no liability to any party for any loss or damage caused by errors or omissions resulting from negligence, accident or any other cause.



Westchester County Board of Legislators
 Andrew J. Span, Westchester County Executive



Natural Resource Inventory

Town of Greenburgh

Map # L06

TILE INDEX

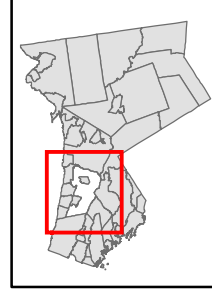
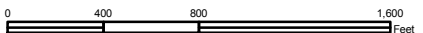
K05	K06	K07	K08	K09	K10
L05	L06	L07	L08	L09	L10
M05	M06	M07	M08	M09	M10
N05	N06	N07	N08	N09	N10
O05	O06	O07	O08	O09	O10

Legend

- 10' TOPO
- 50' TOPO
- Streams
- Lakes, Ponds or Reservoirs
- Aquifer
- Drainage Divides
- Hydric Soils
- Municipal Boundaries
- Tax Parcels
- Buildings
- Slope**
 - 15% - 25%
 - 25% and Over
- NYSDEC Wetlands**
 - Greater than 12.4 acres
 - Less than 12.4 acres
- Floodplains**
 - 100
 - 500
- National Wetlands Inventory



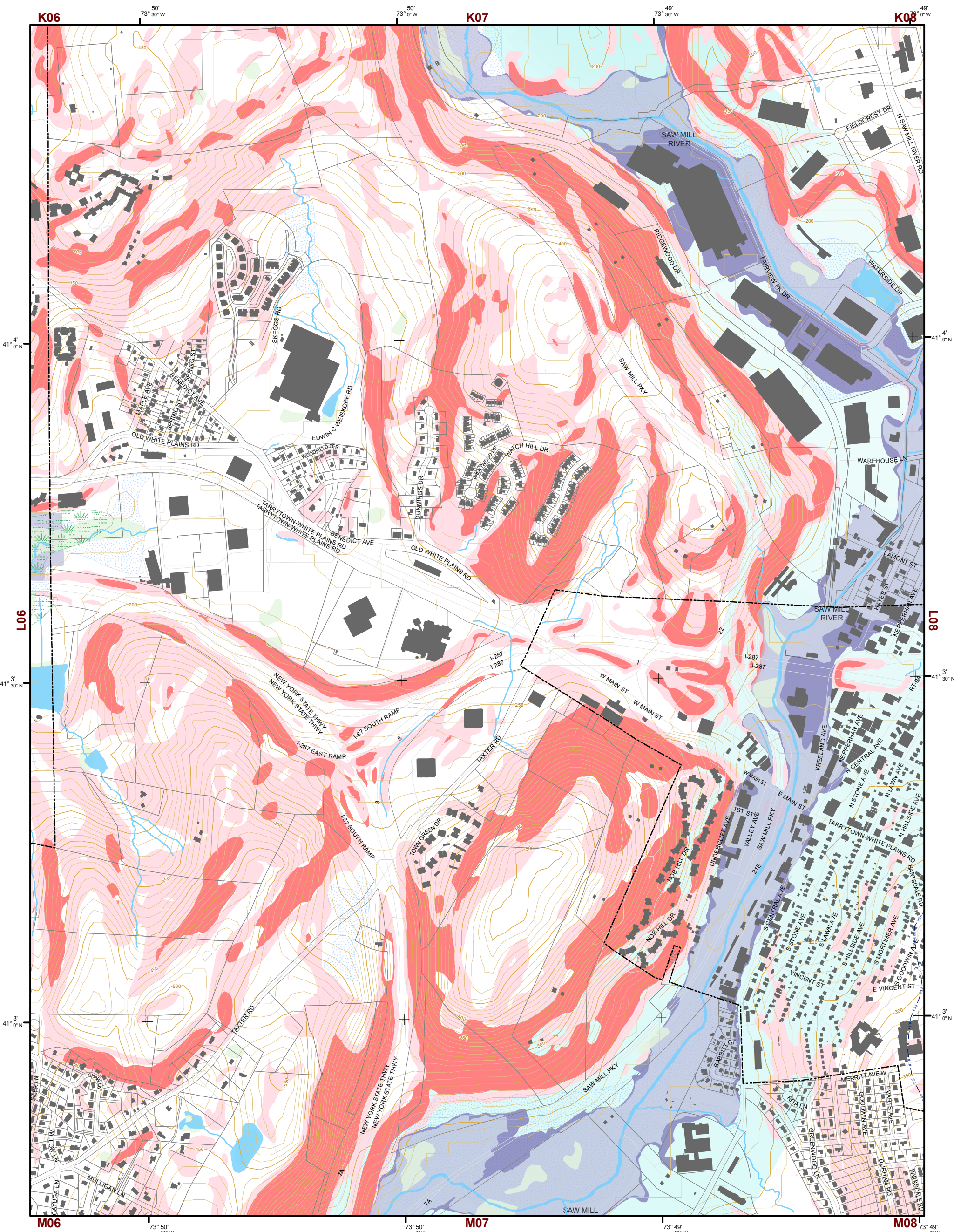
1 inch equals 800 feet



This map is for general information only and should not be used for site specific planning. Data was collected from a wide range of local, state, and federal GIS databases "as is." Westchester County assumes no liability to any party for any loss or damage caused by errors or omissions resulting from negligence, accident or any other cause.

GIS GEOGRAPHIC INFORMATION SYSTEMS

Westchester County Board of Legislators
 Andrew J. Span, Westchester County Executive



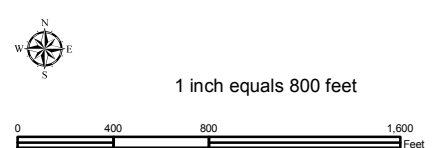
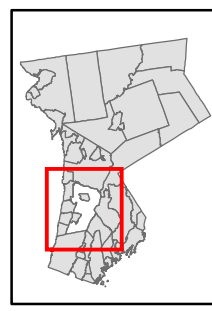
Natural Resource Inventory

Town of Greenburgh

Map # L07

TILE INDEX

K05	K06	K07	K08	K09	K10
L05	L06	L07	L08	L09	L10
M05	M06	M07	M08	M09	M10
N05	N06	N07	N08	N09	N10
O05	O06	O07	O08	O09	O10



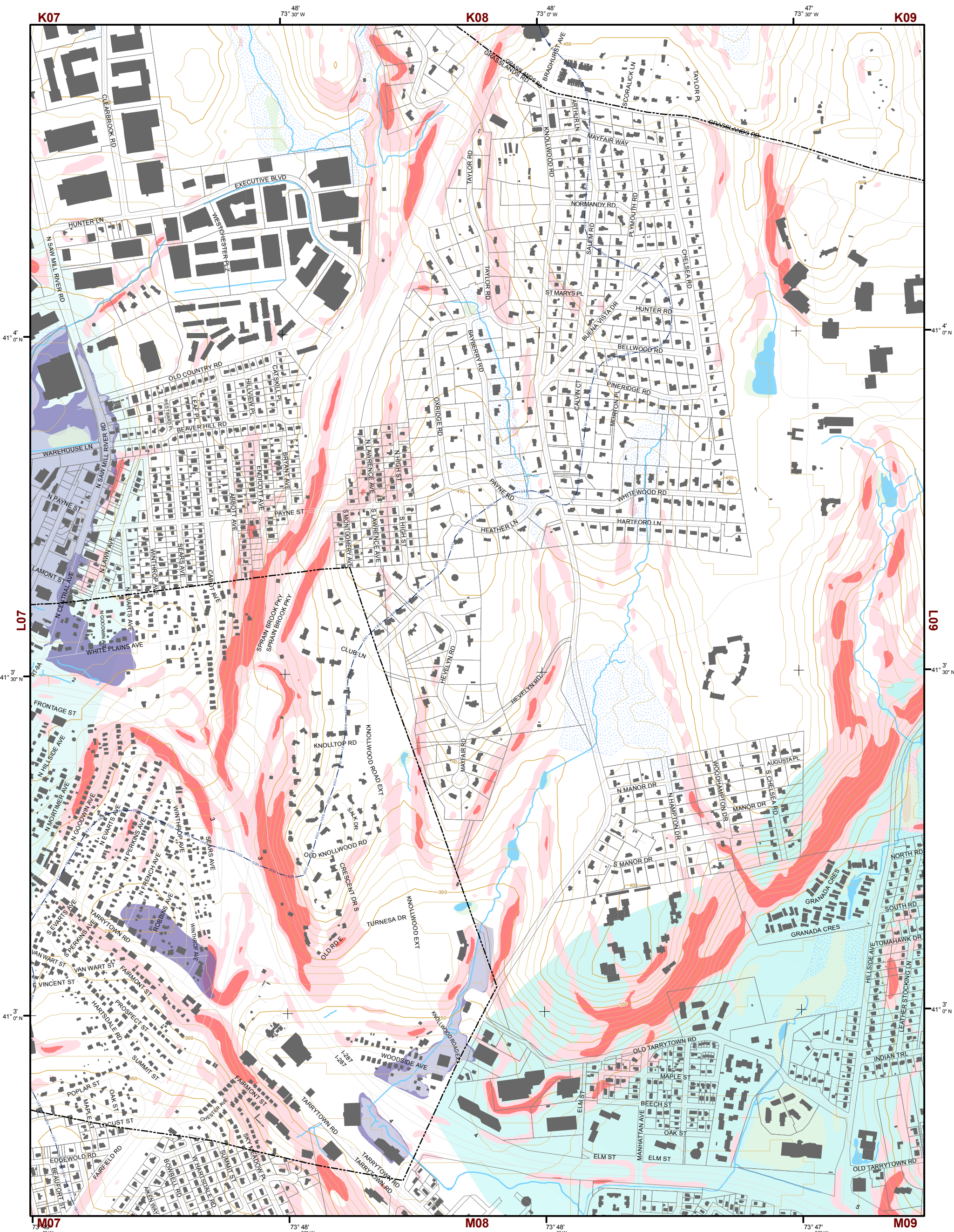
Legend

- 10' TOPO
- 50' TOPO
- Streams
- Lakes, Ponds or Reservoirs
- Aquifer
- Drainage Divides
- Hydric Soils
- Municipal Boundaries
- Tax Parcels
- Buildings
- Slope**
 - 15% - 25%
 - 25% and Over
- NYSDEC Wetlands**
 - Greater than 12.4 acres
 - Less than 12.4 acres
- Floodplains**
 - 100
 - 500
- National Wetlands Inventory

This map is for general information only and should not be used for site specific planning. Data was collected from a wide range of local, state, and federal GIS databases "as is." Westchester County assumes no liability to any party for any loss or damage caused by errors or omissions resulting from negligence, accident or any other cause.

GIS GEOGRAPHIC INFORMATION SYSTEMS

Westchester County Board of Legislators
Andrew J. Span, Westchester County Executive

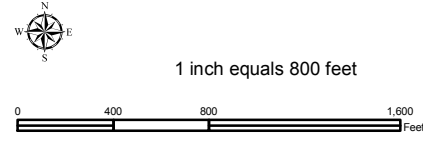
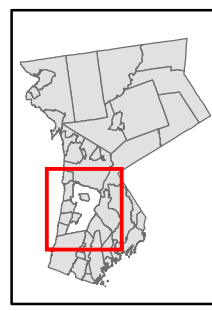


Natural Resource Inventory

Town of Greenburgh

Map # L08

TILE INDEX



Legend

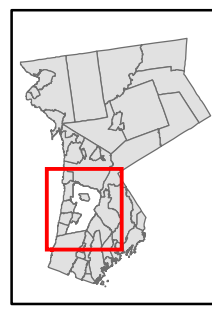
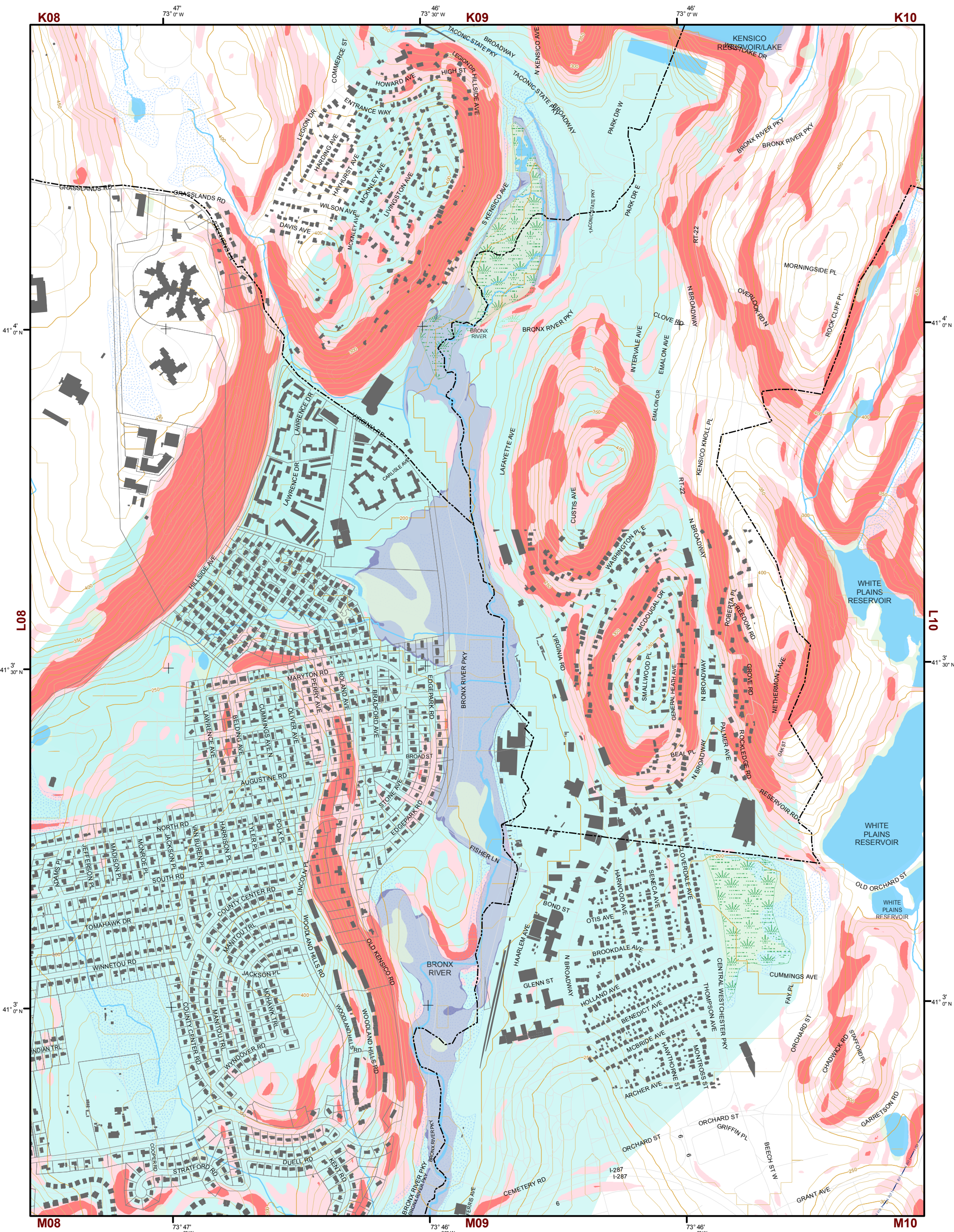
- 10' TOPO
- 50' TOPO
- Streams
- Lakes, Ponds or Reservoirs
- Aquifer
- Drainage Divides
- Hydric Soils
- Municipal Boundaries
- Tax Parcels
- Buildings
- Slope 15% - 25%
- Slope 25% and Over
- National Wetlands Inventory
- NYSDEC Wetlands Greater than 12.4 acres
- NYSDEC Wetlands Less than 12.4 acres
- Floodplains 100
- Floodplains 500

K05	K06	K07	K08	K09	K10
L05	L06	L07	L08	L09	L10
M05	M06	M07	M08	M09	M10
N05	N06	N07	N08	N09	N10
O05	O06	O07	O08	O09	O10

This map is for general information only and should not be used for site specific planning. Data was collected from a wide range of local, state, and federal GIS databases "as is". Westchester County assumes no liability to any party for any loss or damage caused by errors or omissions resulting from negligence, accident or any other cause.



Westchester County Board of Legislators
Andrew J. Span, Westchester County Executive

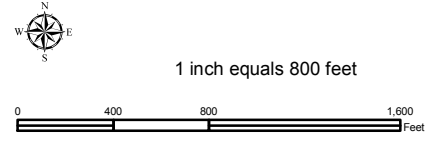


Natural Resource Inventory

Town of Greenburgh

Map # L09

TILE INDEX



Legend

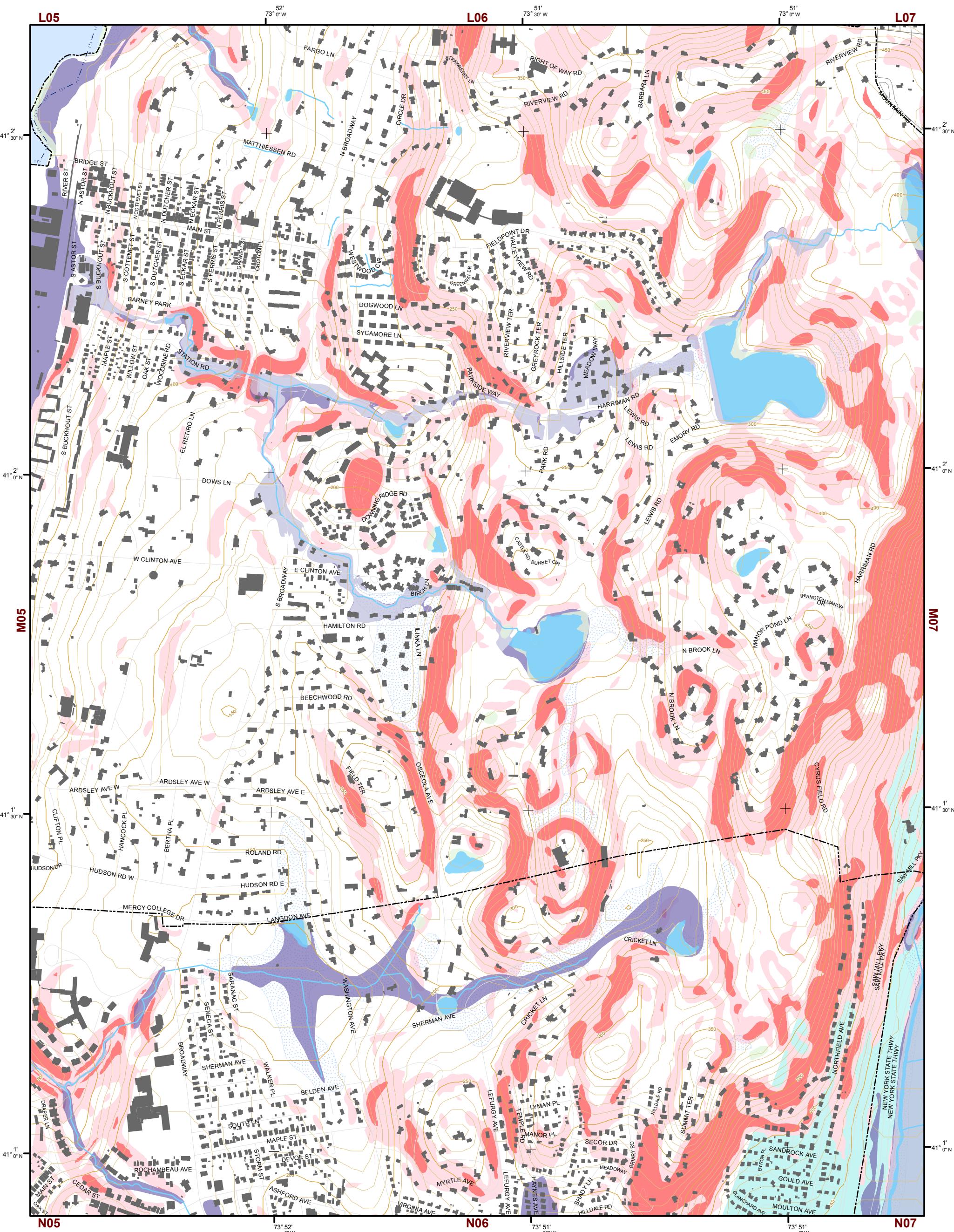
- 10' TOPO
- 50' TOPO
- Streams
- Lakes, Ponds or Reservoirs
- Aquifer
- Drainage Divides
- Hydric Soils
- Municipal Boundaries
- Tax Parcels
- Buildings
- Slope 15% - 25%
- Slope 25% and Over
- NYSDEC Wetlands Greater than 12.4 acres
- NYSDEC Wetlands Less than 12.4 acres
- Floodplains 100
- Floodplains 500
- National Wetlands Inventory

K05	K06	K07	K08	K09	K10
L05	L06	L07	L08	L09	L10
M05	M06	M07	M08	M09	M10
N05	N06	N07	N08	N09	N10
O05	O06	O07	O08	O09	O10

This map is for general information only and should not be used for site specific planning. Data was collected from a wide range of local, state, and federal GIS databases "as is." Westchester County assumes no liability to any party for any loss or damage caused by errors or omissions resulting from negligence, accident or any other cause.

Westchester County Board of Legislators
 Andrew J. Span, Westchester County Executive





Natural Resource Inventory

Town of Greenburgh

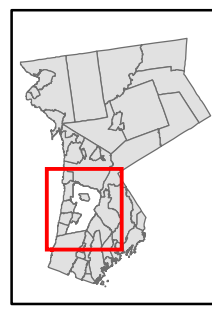
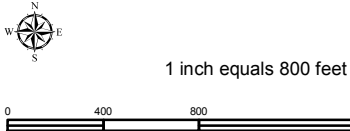
Map # M06

TILE INDEX

K05	K06	K07	K08	K09	K10
L05	L06	L07	L08	L09	L10
M05	M06	M07	M08	M09	M10
N05	N06	N07	N08	N09	N10
O05	O06	O07	O08	O09	O10

Legend

- 10' TOPO
- 50' TOPO
- Streams
- Lakes, Ponds or Reservoirs
- Aquifer
- Drainage Divides
- Hydric Soils
- Municipal Boundaries
- Tax Parcels
- Buildings
- Slope 15% - 25%
- Slope 25% and Over
- National Wetlands Inventory
- NYSDEC Wetlands Greater than 12.4 acres
- NYSDEC Wetlands Less than 12.4 acres
- Floodplains 100
- Floodplains 500



This map is for general information only and should not be used for site specific planning. Data was collected from a wide range of local, state, and federal GIS databases "as is." Westchester County assumes no liability to any party for any loss or damage caused by errors or omissions resulting from negligence, accident or any other cause.



Westchester County Board of Legislators
Andrew J. Spano, Westchester County Executive

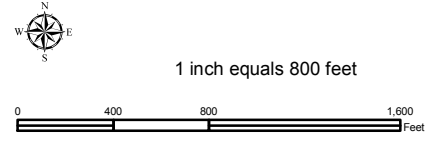
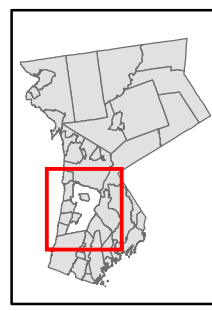


Natural Resource Inventory

Town of Greenburgh

Map # M07

TILE INDEX



Legend

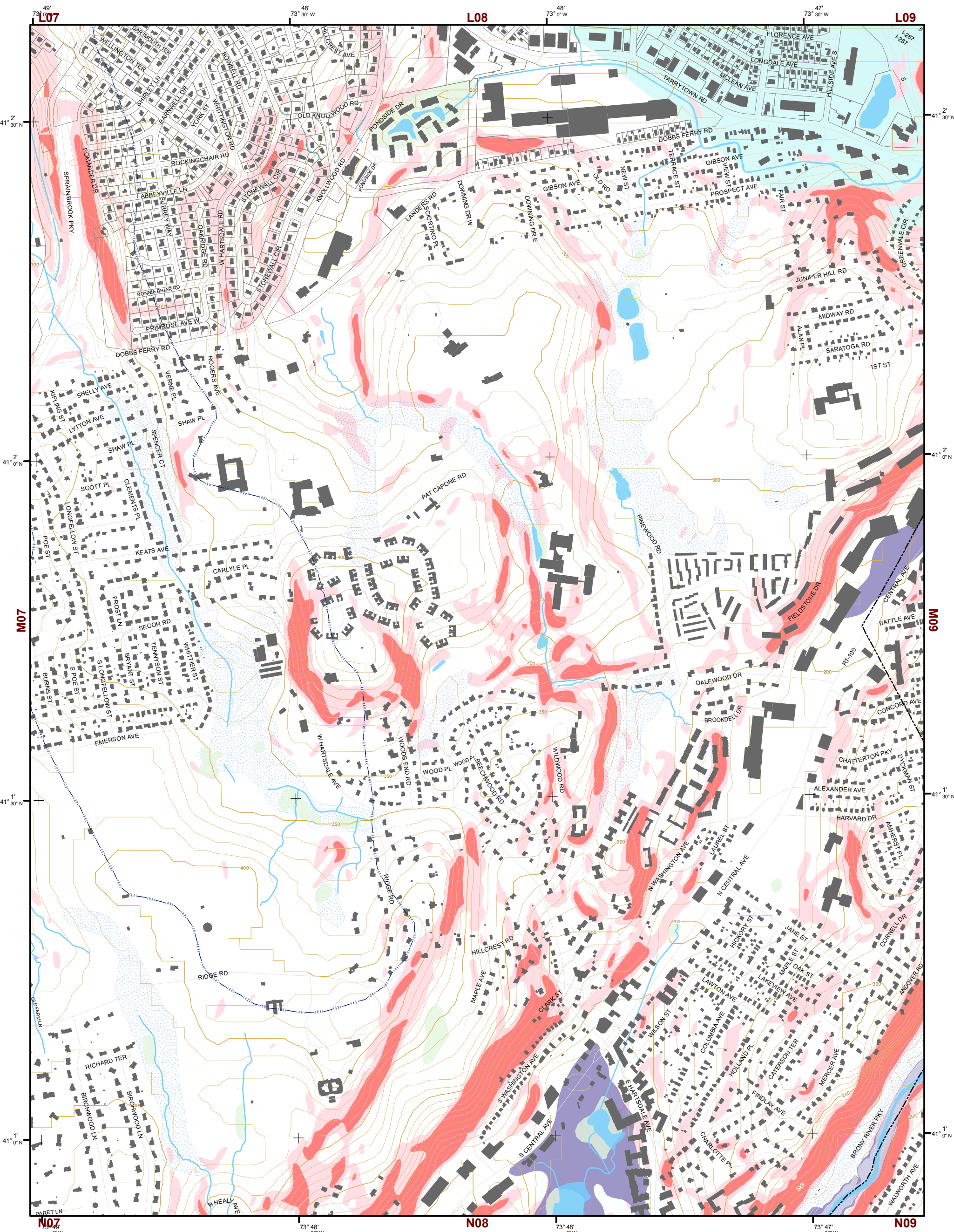
- 10' TOPO
- 50' TOPO
- Streams
- Lakes, Ponds or Reservoirs
- Aquifer
- Drainage Divides
- Hydric Soils
- Municipal Boundaries
- Tax Parcels
- Buildings
- Slope 15% - 25%
- Slope 25% and Over
- National Wetlands Inventory
- NYSDEC Wetlands Greater than 12.4 acres
- NYSDEC Wetlands Less than 12.4 acres
- Floodplains 100
- Floodplains 500

K05	K06	K07	K08	K09	K10
L05	L06	L07	L08	L09	L10
M05	M06	M07	M08	M09	M10
N05	N06	N07	N08	N09	N10
O05	O06	O07	O08	O09	O10

This map is for general information only and should not be used for site specific planning. Data was collected from a wide range of local, state, and federal GIS databases "as is." Westchester County assumes no liability to any party for any loss or damage caused by errors or omissions resulting from negligence, accident or any other cause.



Westchester County Board of Legislators
 Andrew J. Spano, Westchester County Executive

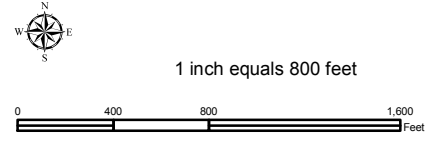
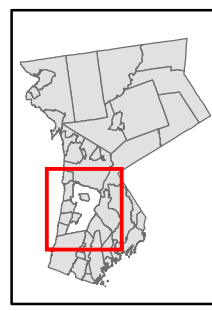


Natural Resource Inventory

Town of Greenburgh

Map # M08

TILE INDEX



- Legend**
- 10' TOPO
 - 50' TOPO
 - Streams
 - Lakes, Ponds or Reservoirs
 - Aquifer
 - Drainage Divides
 - Hydric Soils
 - Municipal Boundaries
 - Tax Parcels
 - Buildings
 - Slope**
 - 15% - 25%
 - 25% and Over
 - National Wetlands Inventory
 - NYSDEC Wetlands**
 - Greater than 12.4 acres
 - Less than 12.4 acres
 - Floodplains**
 - 100
 - 500

K05	K06	K07	K08	K09	K10
L05	L06	L07	L08	L09	L10
M05	M06	M07	M08	M09	M10
N05	N06	N07	N08	N09	N10
O05	O06	O07	O08	O09	O10

This map is for general information only and should not be used for site specific planning. Data was collected from a wide range of local, state, and federal GIS databases "as is." Westchester County assumes no liability to any party for any loss or damage caused by errors or omissions resulting from negligence, accident or any other cause.



Westchester County Board of Legislators
 Andrew J. Span, Westchester County Executive

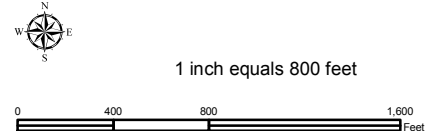
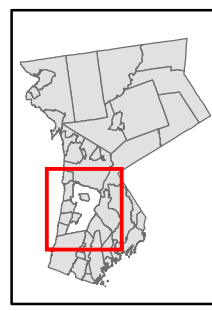


Natural Resource Inventory

Town of Greenburgh

Map # M09

TILE INDEX



Legend

- 10' TOPO
- 50' TOPO
- Streams
- Lakes, Ponds or Reservoirs
- Aquifer
- Drainage Divides
- Hydric Soils
- Municipal Boundaries
- Tax Parcels
- Buildings
- Slope 15% - 25%
- Slope 25% and Over
- National Wetlands Inventory
- NYSDEC Wetlands Greater than 12.4 acres
- NYSDEC Wetlands Less than 12.4 acres
- Floodplains 100
- Floodplains 500

K05	K06	K07	K08	K09	K10
L05	L06	L07	L08	L09	L10
M05	M06	M07	M08	M09	M10
N05	N06	N07	N08	N09	N10
O05	O06	O07	O08	O09	O10

This map is for general information only and should not be used for site specific planning. Data was collected from a wide range of local, state, and federal GIS databases "as is." Westchester County assumes no liability to any party for any loss or damage caused by errors or omissions resulting from negligence, accident or any other cause.



Westchester County Board of Legislators