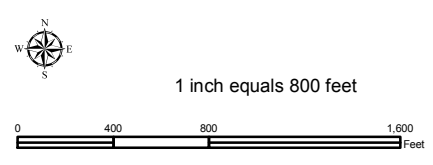
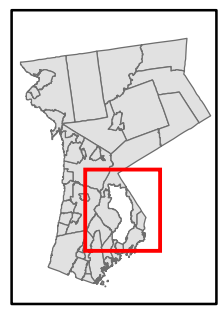


Natural Resource Inventory

Town of Harrison

Map # K10

TILE INDEX



Legend

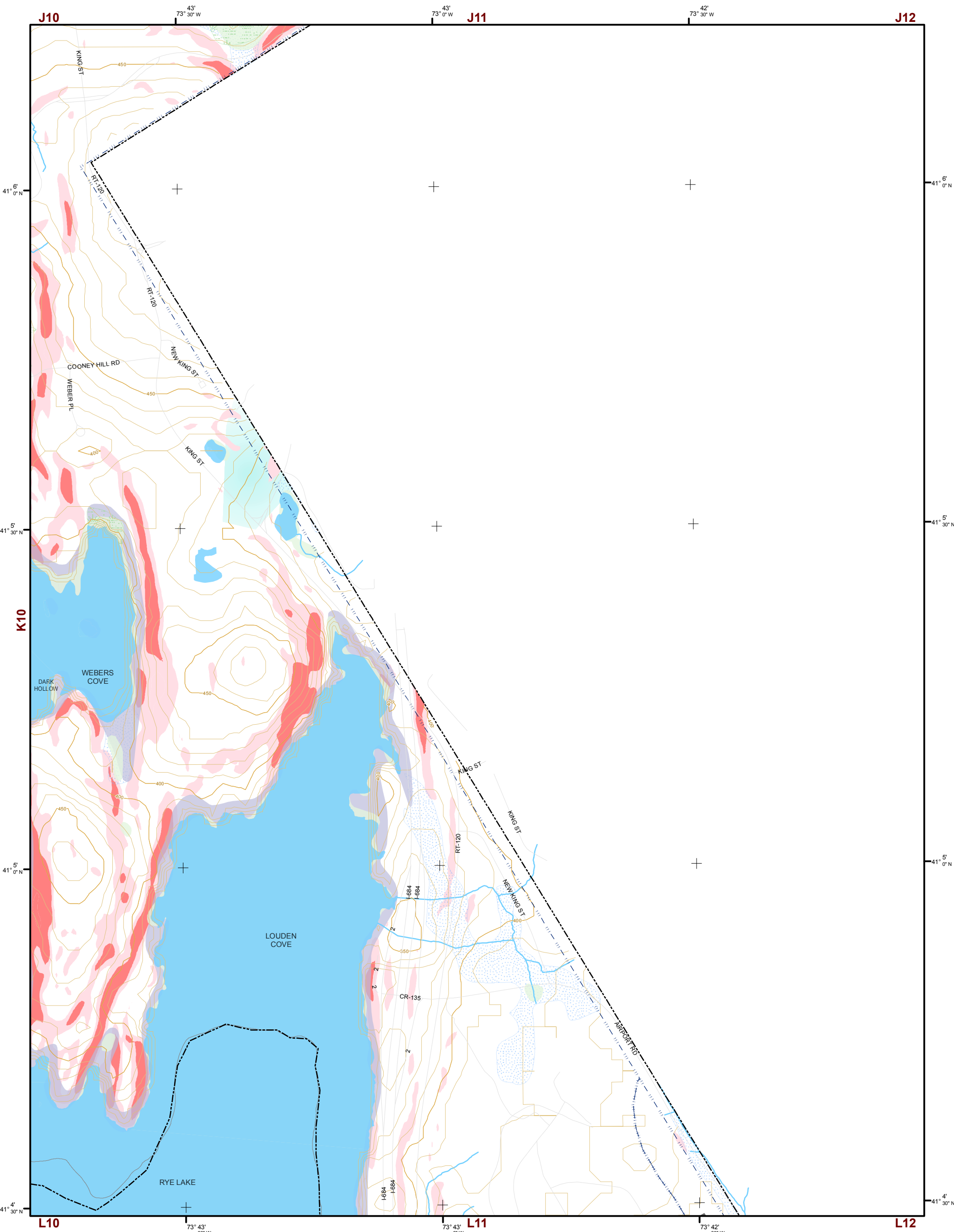
- 10' TOPO
- 50' TOPO
- Streams
- Lakes, Ponds or Reservoirs
- Aquifer
- Drainage Divides
- Hydric Soils
- Municipal Boundaries
- Tax Parcels
- Buildings
- Slope**
- 15% - 25%
- 25% and Over
- NYSDEC Wetlands**
- Greater than 12.4 acres
- Less than 12.4 acres
- Floodplains**
- 100
- 500
- National Wetlands Inventory

K08	K09	K10	K11
L08	L09	L10	L11
M08	M09	M10	M11
N08	N09	N10	N11
O08	O09	O10	O11

This map is for general information only and should not be used for site specific planning. Data was collected from a wide range of local, state, and federal GIS databases "as is." Westchester County assumes no liability to any party for any loss or damage caused by errors or omissions resulting from negligence, accident or any other cause.



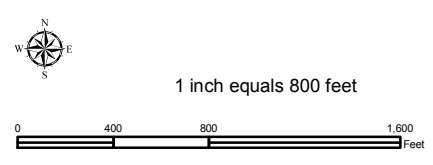
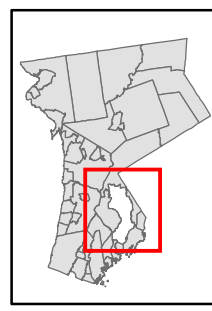
Westchester County Board of Legislators
 Andrew J. Span, Westchester County Executive



Natural Resource Inventory

Town of Harrison

Map # K11



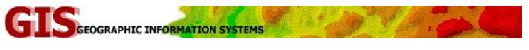
Legend

- 10' TOPO
- 50' TOPO
- Streams
- Lakes, Ponds or Reservoirs
- Aquifer
- Drainage Divides
- Hydric Soils
- Municipal Boundaries
- Tax Parcels
- Buildings
- Slope 15% - 25%
- Slope 25% and Over
- National Wetlands Inventory
- NYSDEC Wetlands Greater than 12.4 acres
- NYSDEC Wetlands Less than 12.4 acres
- Floodplains 100
- Floodplains 500

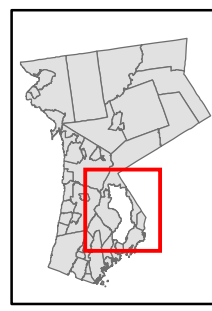
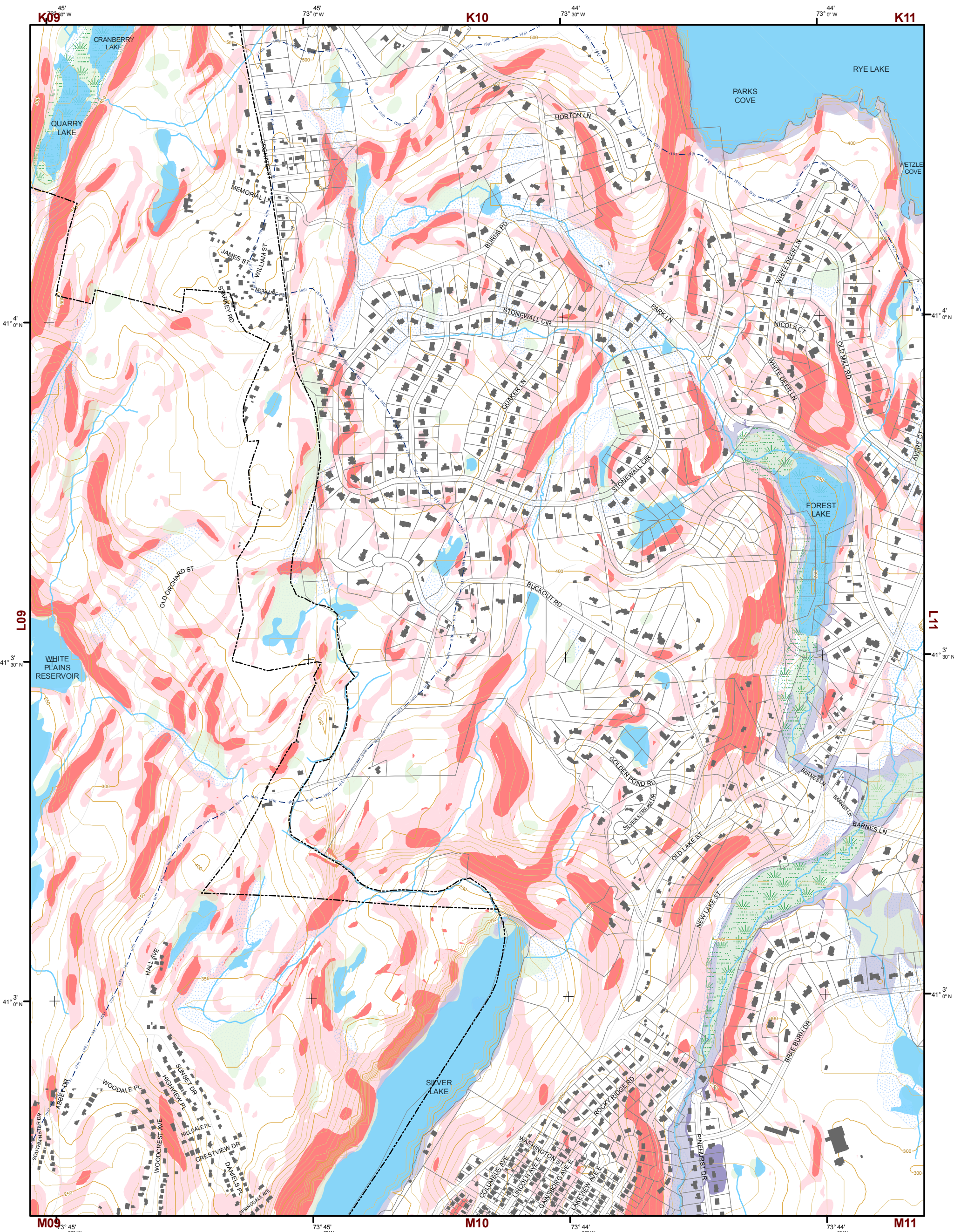
TILE INDEX

K08	K09	K10	K11	K12
L08	L09	L10	L11	L12
M08	M09	M10	M11	M12
N08	N09	N10	N11	N12
O08	O09	O10	O11	O12

This map is for general information only and should not be used for site specific planning. Data was collected from a wide range of local, state, and federal GIS databases "as is." Westchester County assumes no liability to any party for any loss or damage caused by errors or omissions resulting from negligence, accident or any other cause.



Westchester County Board of Legislators
Andrew J. Spano, Westchester County Executive

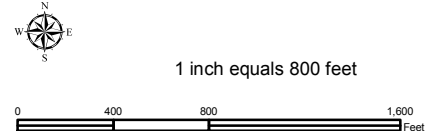


Natural Resource Inventory

Town of Harrison

Map # L10

TILE INDEX



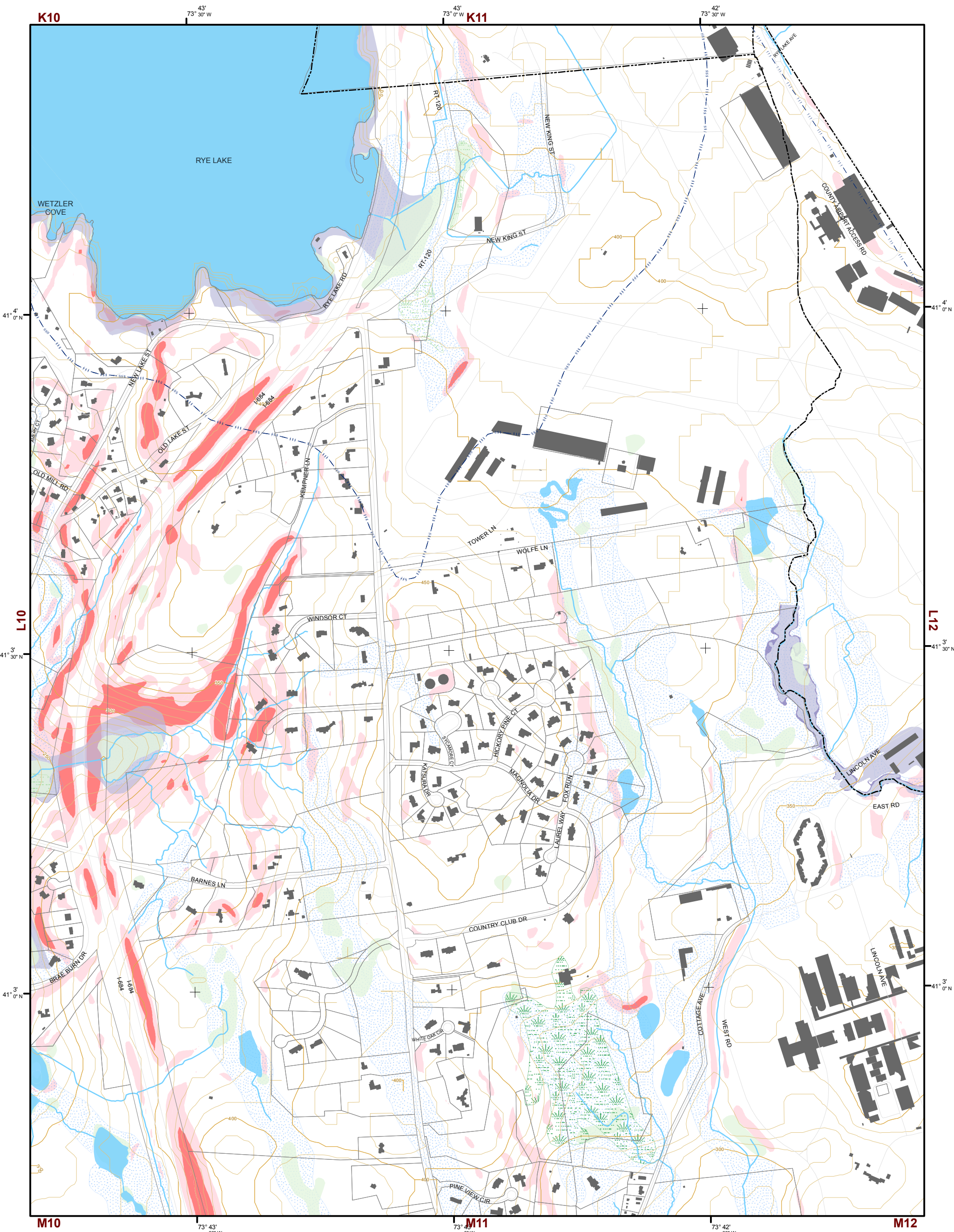
- Legend**
- 10' TOPO
 - 50' TOPO
 - Streams
 - Lakes, Ponds or Reservoirs
 - Aquifer
 - Drainage Divides
 - Hydric Soils
 - Municipal Boundaries
 - Tax Parcels
 - Buildings
 - Slope**
 - 15% - 25%
 - 25% and Over
 - NYSDEC Wetlands**
 - Greater than 12.4 acres
 - Less than 12.4 acres
 - Floodplains**
 - 100
 - 500
 - National Wetlands Inventory

K08	K09	K10	K11
L08	L09	L10	L11
M08	M09	M10	M11
N08	N09	N10	N11
O08	O09	O10	O11

This map is for general information only and should not be used for site specific planning. Data was collected from a wide range of local, state, and federal GIS databases "as is." Westchester County assumes no liability to any party for any loss or damage caused by errors or omissions resulting from negligence, accident or any other cause.

GIS GEOGRAPHIC INFORMATION SYSTEMS

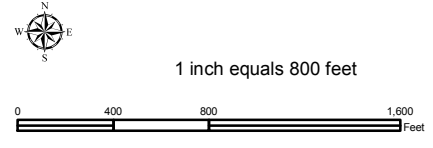
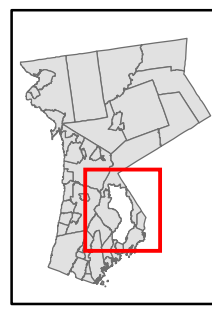
Westchester County Board of Legislators
 Andrew J. Span, Westchester County Executive



Natural Resource Inventory

Town of Harrison

Map # L11



Legend

- 10' TOPO
- 50' TOPO
- Streams
- Lakes, Ponds or Reservoirs
- Aquifer
- Drainage Divides
- Hydric Soils
- Municipal Boundaries
- Tax Parcels
- Buildings
- Slope**
 - 15% - 25%
 - 25% and Over
- NYSDEC Wetlands**
 - Greater than 12.4 acres
 - Less than 12.4 acres
- Floodplains**
 - 100
 - 500
- National Wetlands Inventory

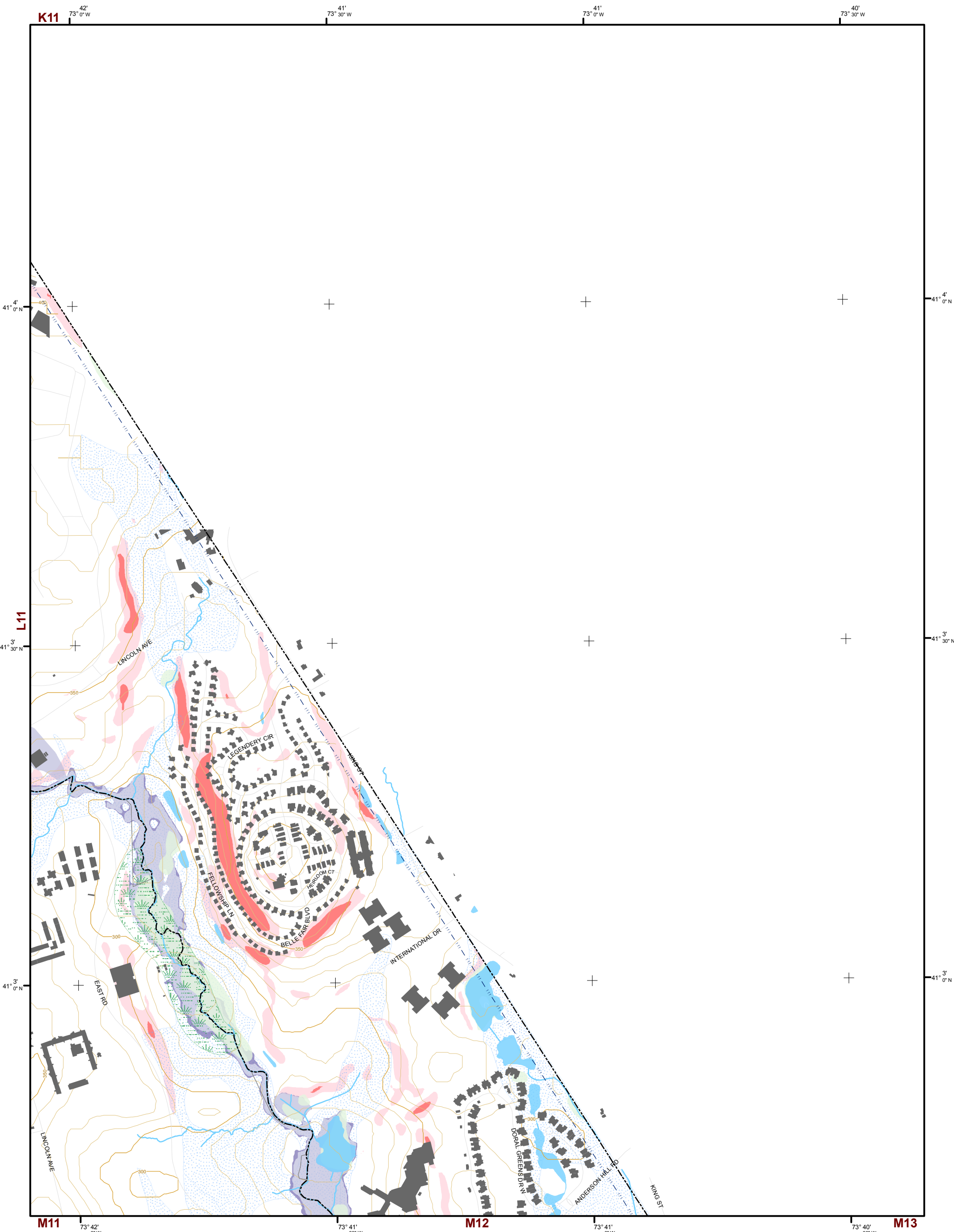
TILE INDEX

K08	K09	K10	K11
L08	L09	L10	L11
M08	M09	M10	M11
N08	N09	N10	N11
O08	O09	O10	O11

This map is for general information only and should not be used for site specific planning. Data was collected from a wide range of local, state, and federal GIS databases "as is." Westchester County assumes no liability to any party for any loss or damage caused by errors or omissions resulting from negligence, accident or any other cause.

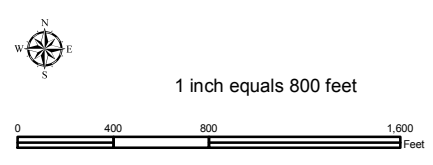
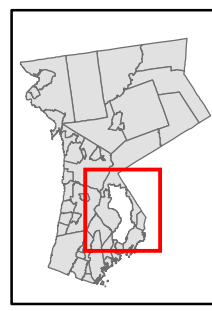


Westchester County Board of Legislators
 Andrew J. Span, Westchester County Executive



Natural Resource Inventory Map # L12

Town of Harrison

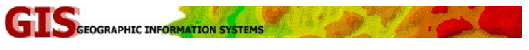


- Legend**
- 10' TOPO
 - 50' TOPO
 - Streams
 - Lakes, Ponds or Reservoirs
 - Aquifer
 - Drainage Divides
 - Hydric Soils
 - Municipal Boundaries
 - Tax Parcels
 - Buildings
 - Slope**
 - 15% - 25%
 - 25% and Over
 - NYSDEC Wetlands**
 - Greater than 12.4 acres
 - Less than 12.4 acres
 - Floodplains**
 - 100
 - 500
 - National Wetlands Inventory

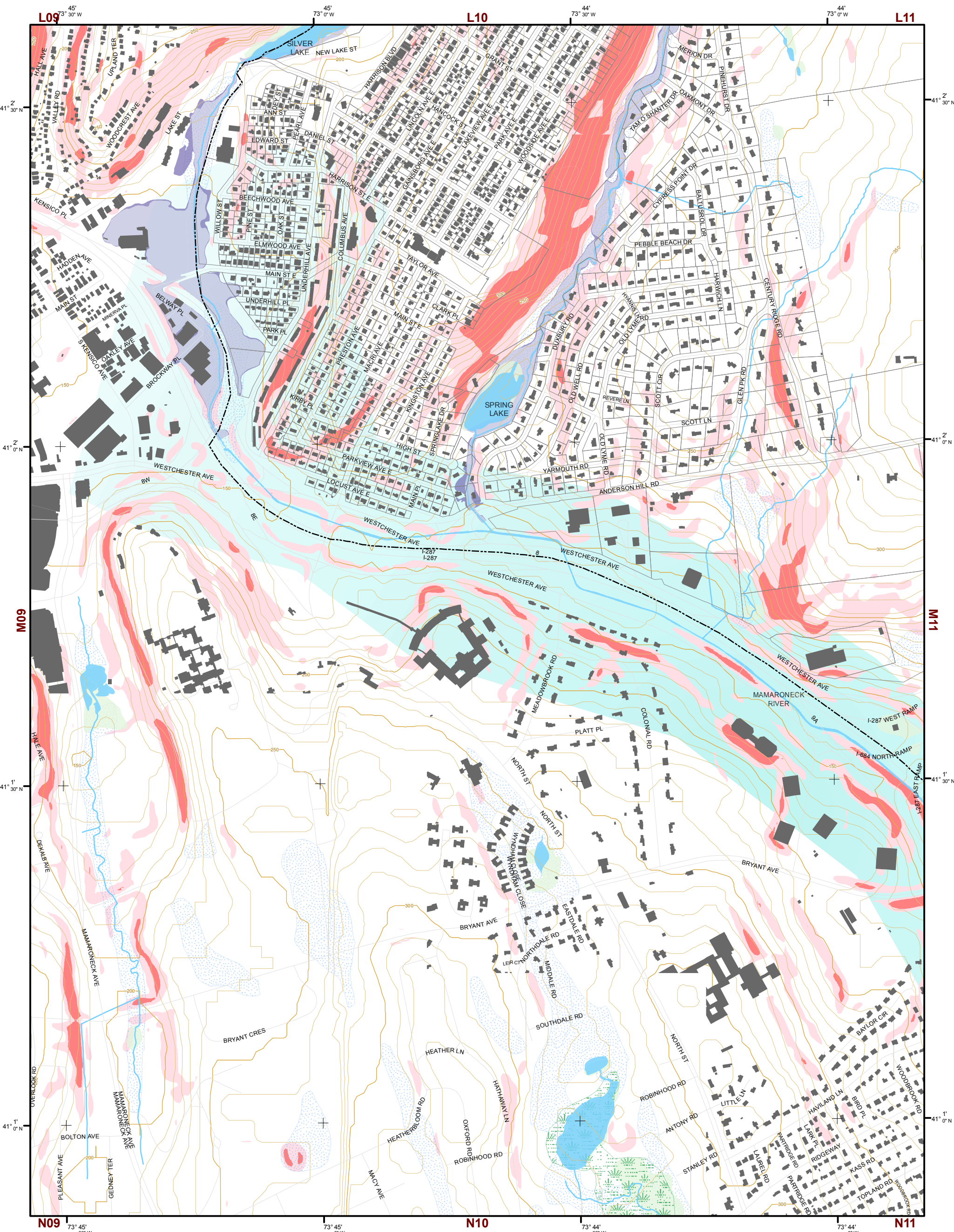
TILE INDEX

K08	K09	K10	K11	
L08	L09	L10	L11	L12
M08	M09	M10	M11	M12
N08	N09	N10	N11	N12
O08	O09	O10	O11	O12

This map is for general information only and should not be used for site specific planning. Data was collected from a wide range of local, state, and federal GIS databases "as is." Westchester County assumes no liability to any party for any loss or damage caused by errors or omissions resulting from negligence, accident or any other cause.



Westchester
County Board of Legislators
Andrew J. Spano, Westchester County Executive

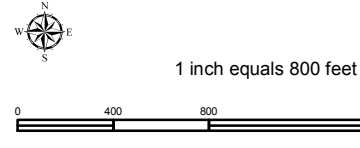
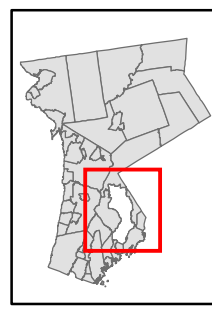


Natural Resource Inventory

Town of Harrison

Map # M10

TILE INDEX

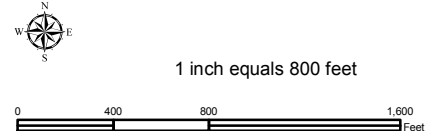
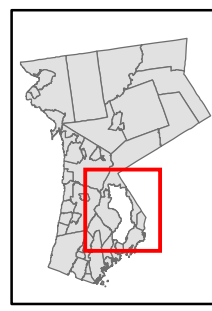
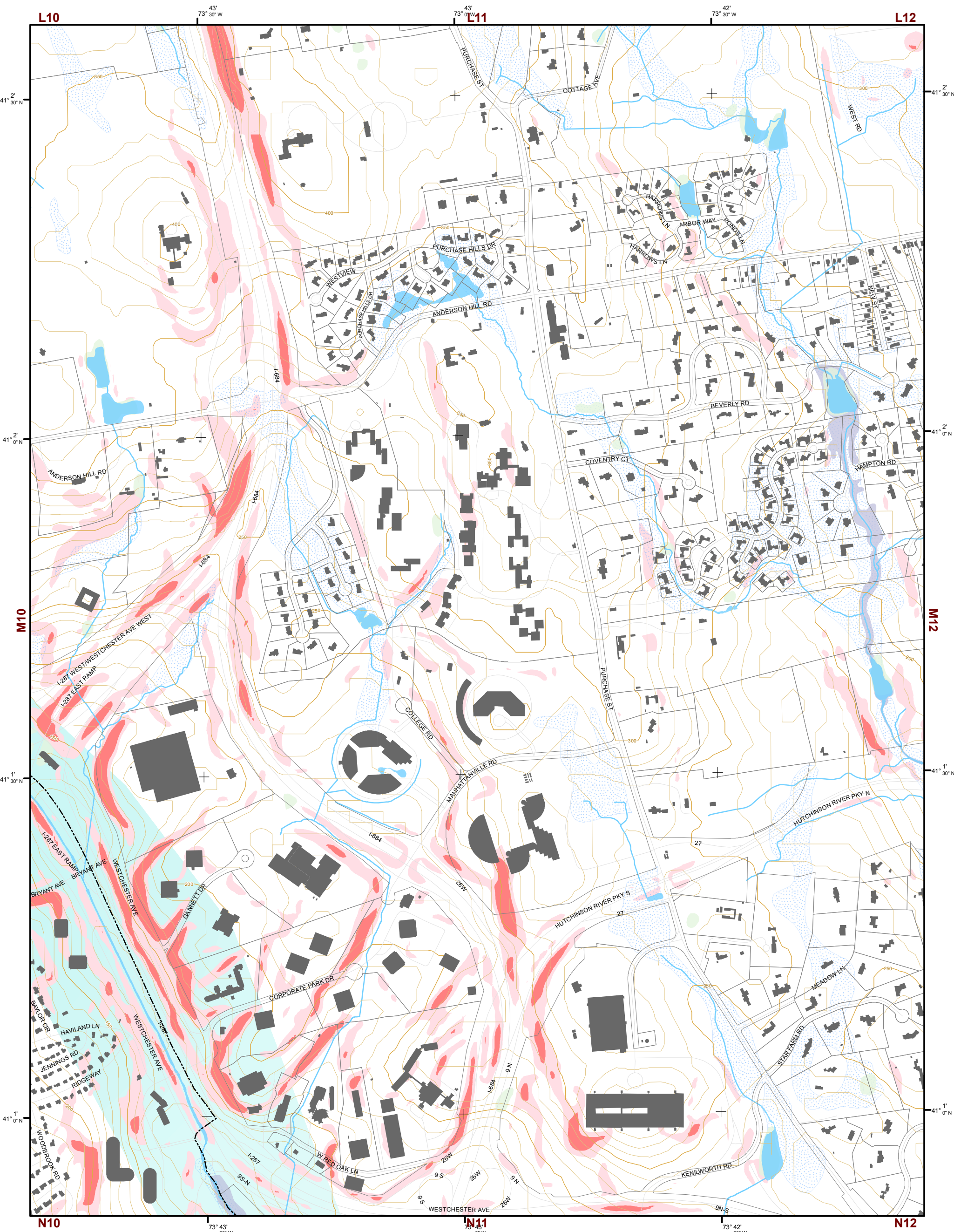


- Legend**
- 10' TOPO
 - 50' TOPO
 - Streams
 - Lakes, Ponds or Reservoirs
 - Aquifer
 - Drainage Divides
 - Hydric Soils
 - Municipal Boundaries
 - Tax Parcels
 - Buildings
 - Slope 15% - 25%
 - Slope 25% and Over
 - NYSDEC Wetlands Greater than 12.4 acres
 - NYSDEC Wetlands Less than 12.4 acres
 - Floodplains 100
 - Floodplains 500
 - National Wetlands Inventory

K08	K09	K10	K11
L08	L09	L10	L11
M08	M09	M10	M11
N08	N09	N10	N11
O08	O09	O10	O11

This map is for general information only and should not be used for site specific planning. Data was collected from a wide range of local, state, and federal GIS databases "as is." Westchester County assumes no liability to any party for any loss or damage caused by errors or omissions resulting from negligence, accident or any other cause.





Natural Resource Inventory

Town of Harrison

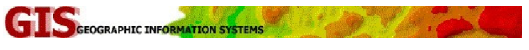
Map # M11

- Legend**
- 10' TOPO
 - 50' TOPO
 - Streams
 - Lakes, Ponds or Reservoirs
 - Aquifer
 - Drainage Divides
 - Hydric Soils
 - Municipal Boundaries
 - Tax Parcels
 - Buildings
 - Slope**
 - 15% - 25%
 - 25% and Over
 - National Wetlands Inventory
 - NYSDEC Wetlands**
 - Greater than 12.4 acres
 - Less than 12.4 acres
 - Floodplains**
 - 100
 - 500

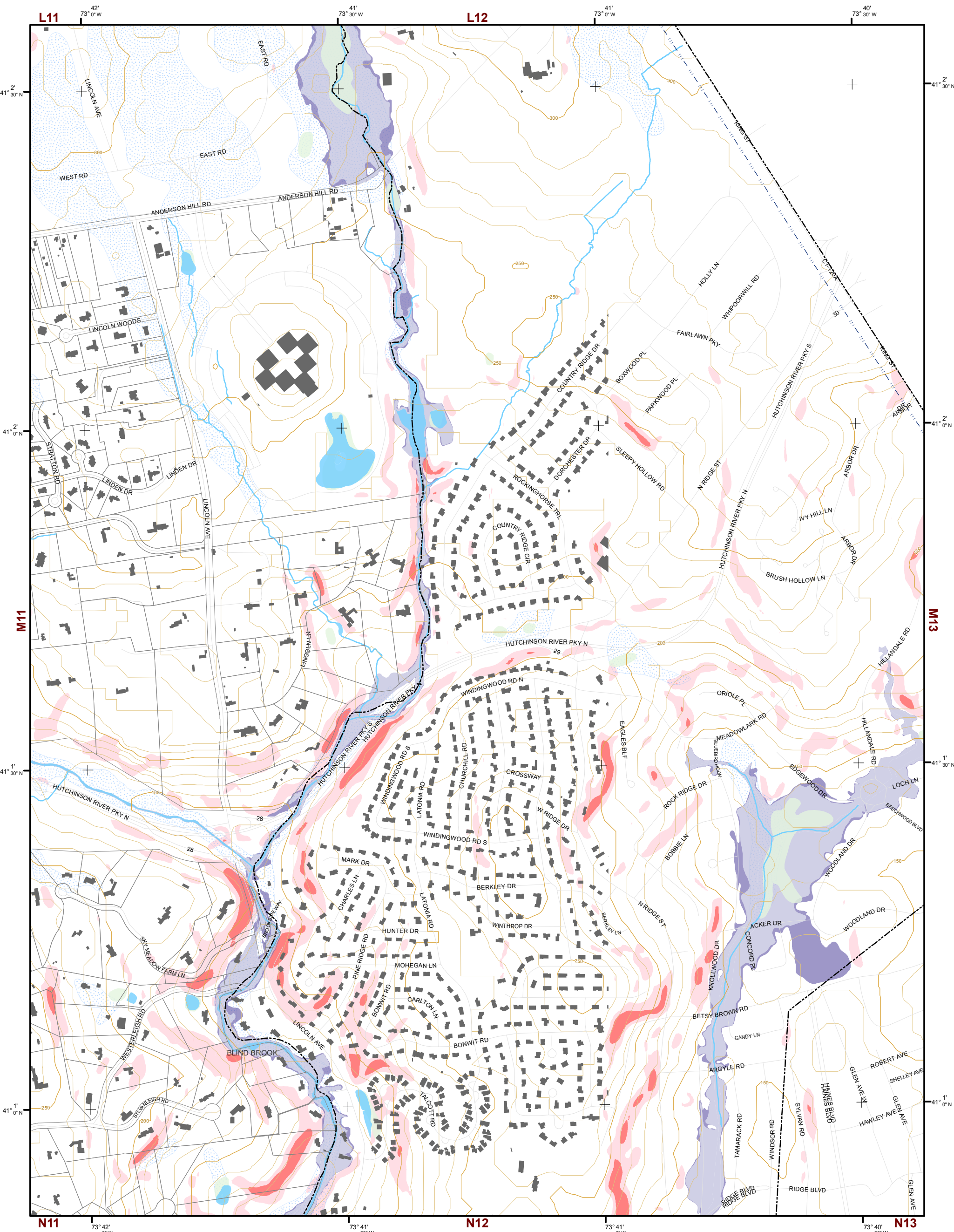
TILE INDEX

K08	K09	K10	K11
L08	L09	L10	L11
M08	M09	M10	M11
N08	N09	N10	N11
O08	O09	O10	O11

This map is for general information only and should not be used for site specific planning. Data was collected from a wide range of local, state, and federal GIS databases "as is." Westchester County assumes no liability to any party for any loss or damage caused by errors or omissions resulting from negligence, accident or any other cause.



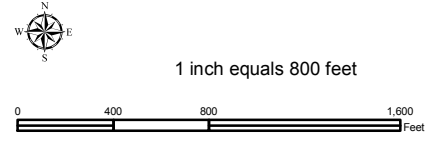
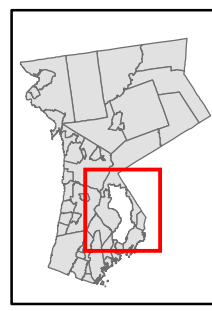
Westchester County Board of Legislators
Andrew J. Span, Westchester County Executive



Natural Resource Inventory

Town of Harrison

Map # M12

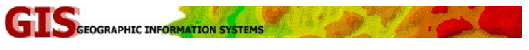


- Legend**
- 10' TOPO
 - 50' TOPO
 - Streams
 - Lakes, Ponds or Reservoirs
 - Aquifer
 - Drainage Divides
 - Hydic Soils
 - Municipal Boundaries
 - Tax Parcels
 - Buildings
 - Slope
 - 15% - 25%
 - 25% and Over
 - NYSDEC Wetlands
 - Greater than 12.4 acres
 - Less than 12.4 acres
 - Floodplains
 - 100
 - 500
 - National Wetlands Inventory

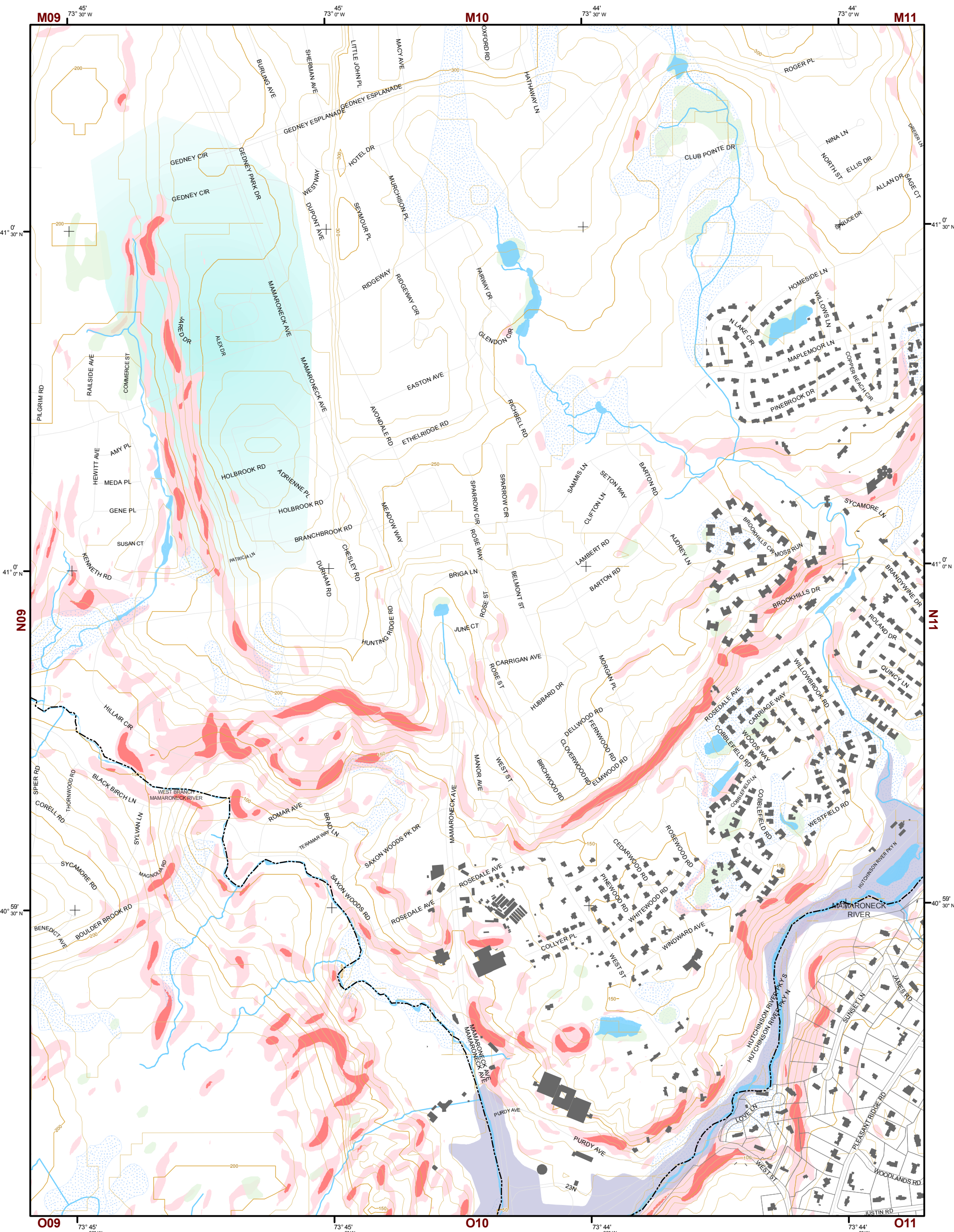
TILE INDEX

K08	K09	K10	K11
L08	L09	L10	L11
M08	M09	M10	M11
N08	N09	N10	N11
O08	O09	O10	O11

This map is for general information only and should not be used for site specific planning. Data was collected from a wide range of local, state, and federal GIS databases "as is." Westchester County assumes no liability to any party for any loss or damage caused by errors or omissions resulting from negligence, accident or any other cause.



Westchester County Board of Legislators
 Andrew J. Span, Westchester County Executive

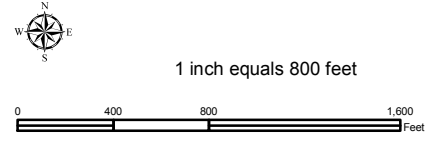
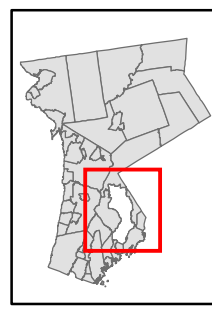


Natural Resource Inventory

Town of Harrison

Map # N10

TILE INDEX



Legend

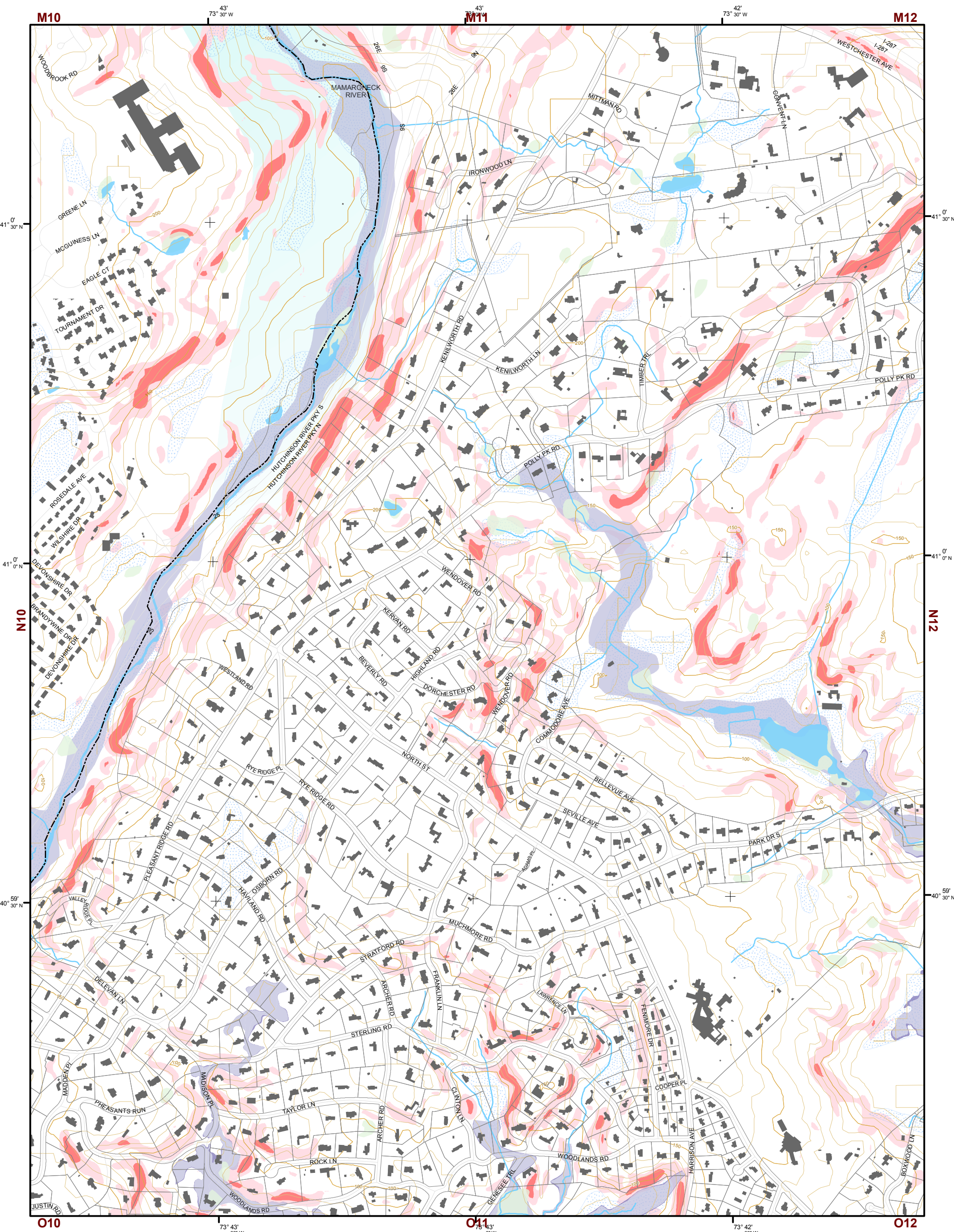
- 10' TOPO
- 50' TOPO
- Streams
- Lakes, Ponds or Reservoirs
- Aquifer
- Drainage Divides
- Hydric Soils
- Municipal Boundaries
- Tax Parcels
- Buildings
- Slope**
- 15% - 25%
- 25% and Over
- NYSDEC Wetlands**
- Greater than 12.4 acres
- Less than 12.4 acres
- Floodplains**
- 100
- 500
- National Wetlands Inventory

K08	K09	K10	K11
L08	L09	L10	L11
M08	M09	M10	M11
N08	N09	N10	N11
O08	O09	O10	O11

This map is for general information only and should not be used for site specific planning. Data was collected from a wide range of local, state, and federal GIS databases "as is." Westchester County assumes no liability to any party for any loss or damage caused by errors or omissions resulting from negligence, accident or any other cause.



Westchester County Board of Legislators
 Andrew J. Span, Westchester County Executive

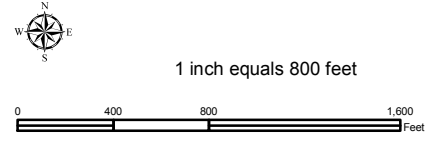
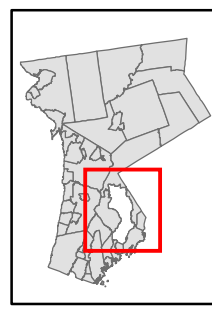


Natural Resource Inventory

Town of Harrison

Map # N11

TILE INDEX



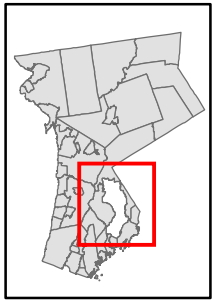
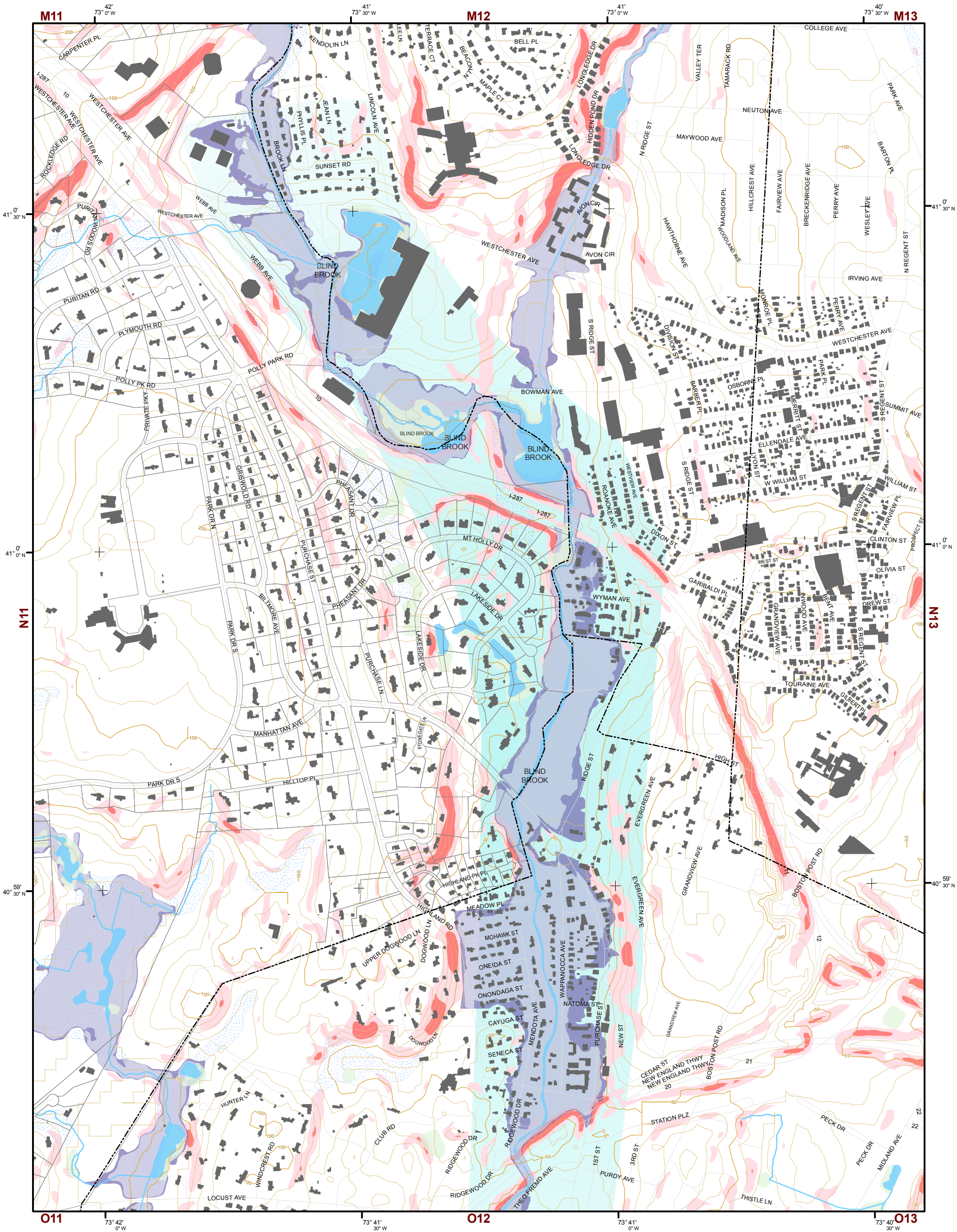
Legend

- 10' TOPO
- 50' TOPO
- Streams
- Lakes, Ponds or Reservoirs
- Aquifer
- Drainage Divides
- Hydric Soils
- Municipal Boundaries
- Tax Parcels
- Buildings
- Slope 15% - 25%
- Slope 25% and Over
- National Wetlands Inventory
- NYSDEC Wetlands Greater than 12.4 acres
- NYSDEC Wetlands Less than 12.4 acres
- Floodplains 100
- Floodplains 500

K08	K09	K10	K11
L08	L09	L10	L11
M08	M09	M10	M11
N08	N09	N10	N11
O08	O09	O10	O11

This map is for general information only and should not be used for site specific planning. Data was collected from a wide range of local, state, and federal GIS databases "as is." Westchester County assumes no liability to any party for any loss or damage caused by errors or omissions resulting from negligence, accident or any other cause.





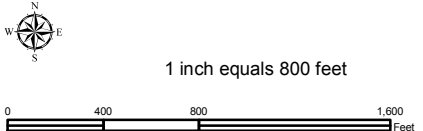
Natural Resource Inventory

Town of Harrison

Map # N12

TILE INDEX

K08	K09	K10	K11
L08	L09	L10	L11
M08	M09	M10	M11
N08	N09	N10	N11
O08	O09	O10	O11
P08	P09	P10	P11



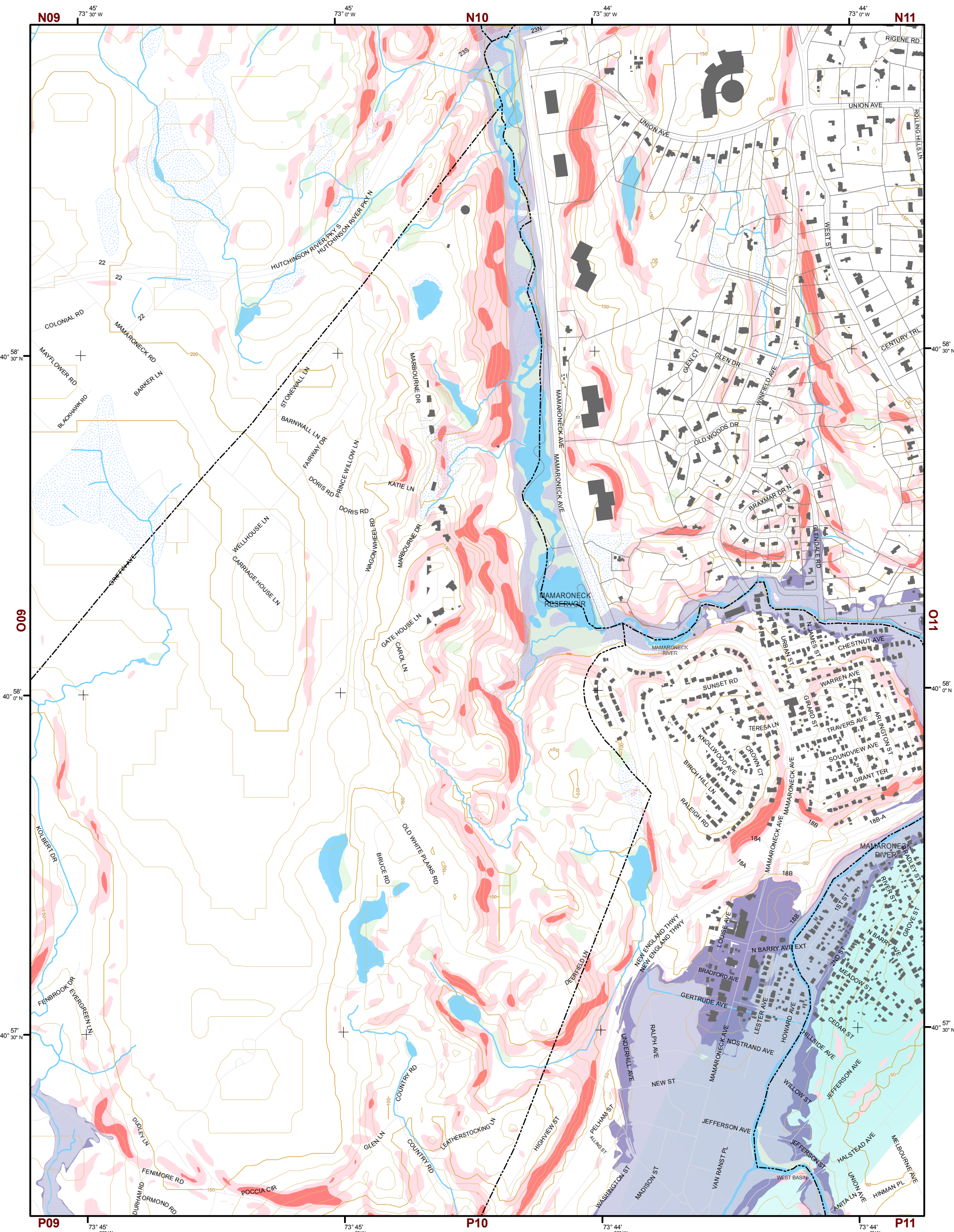
Legend

- 10' TOPO
- 50' TOPO
- Streams
- Lakes, Ponds or Reservoirs
- Aquifer
- Drainage Divides
- Hydric Soils
- Municipal Boundaries
- Tax Parcels
- Buildings
- Slope 15% - 25%
- Slope 25% and Over
- NYSDEC Wetlands Greater than 12.4 acres
- NYSDEC Wetlands Less than 12.4 acres
- Floodplains 100
- Floodplains 500
- National Wetlands Inventory

This map is for general information only and should not be used for site specific planning. Data was collected from a wide range of local, state, and federal GIS databases "as is." Westchester County assumes no liability to any party for any loss or damage caused by errors or omissions resulting from negligence, accident or any other cause.

GIS GEOGRAPHIC INFORMATION SYSTEMS

Westchester County Board of Legislators

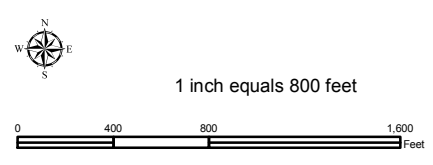
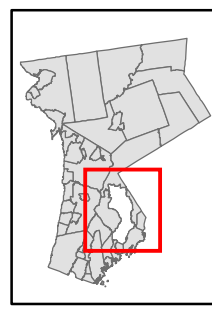


Natural Resource Inventory

Town of Harrison

Map # O10

TILE INDEX



Legend

- 10' TOPO
- 50' TOPO
- Streams
- Lakes, Ponds or Reservoirs
- Aquifer
- Drainage Divides
- Hydric Soils
- Municipal Boundaries
- Tax Parcels
- Buildings
- Slope**
 - 15% - 25%
 - 25% and Over
- NYSDEC Wetlands**
 - Greater than 12.4 acres
 - Less than 12.4 acres
- Floodplains**
 - 100
 - 500
- National Wetlands Inventory

K08	K09	K10	K11
L08	L09	L10	L11
M08	M09	M10	M11
N08	N09	N10	N11
O08	O09	O10	O11

This map is for general information only and should not be used for site specific planning. Data was collected from a wide range of local, state, and federal GIS databases "as is." Westchester County assumes no liability to any party for any loss or damage caused by errors or omissions resulting from negligence, accident or any other cause.



Westchester County Board of Legislators
 Andrew J. Span, Westchester County Executive



Natural Resource Inventory Map # O11

Town of Harrison

TILE INDEX

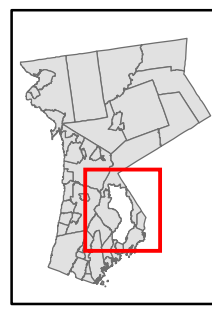
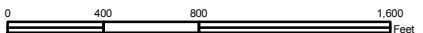
K08	K09	K10	K11
L08	L09	L10	L11
M08	M09	M10	M11
N08	N09	N10	N11
O08	O09	O10	O11
P08	P09	P10	P11

Legend

- 10' TOPO
- 50' TOPO
- Streams
- Lakes, Ponds or Reservoirs
- Aquifer
- Drainage Divides
- Hydric Soils
- Municipal Boundaries
- Tax Parcels
- Buildings
- Slope 15% - 25%
- Slope 25% and Over
- NYSDEC Wetlands Greater than 12.4 acres
- NYSDEC Wetlands Less than 12.4 acres
- Floodplains 100
- Floodplains 500
- National Wetlands Inventory



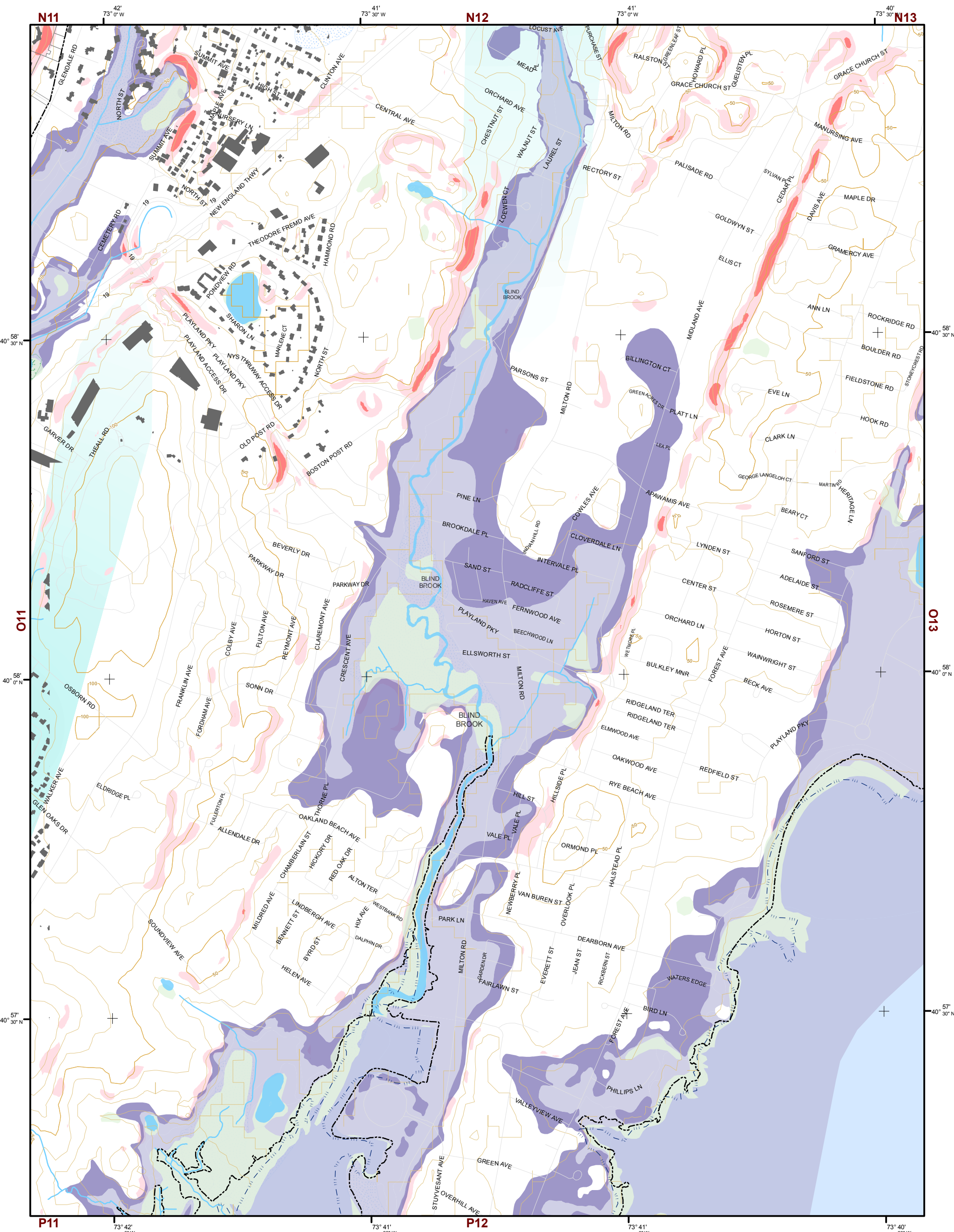
1 inch equals 800 feet



This map is for general information only and should not be used for site specific planning. Data was collected from a wide range of local, state, and federal GIS databases "as is." Westchester County assumes no liability to any party for any loss or damage caused by errors or omissions resulting from negligence, accident or any other cause.



Westchester County Board of Legislators
 Andrew J. Span, Westchester County Executive

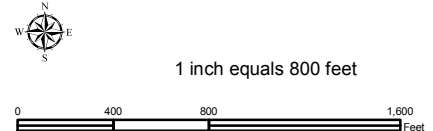
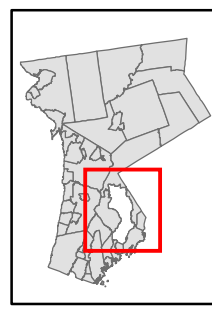


Natural Resource Inventory

Town of Harrison

Map # O12

TILE INDEX



Legend

- 10' TOPO
- 50' TOPO
- Streams
- Lakes, Ponds or Reservoirs
- Aquifer
- Drainage Divides
- Hydric Soils
- Municipal Boundaries
- Tax Parcels
- Buildings
- Slope 15% - 25%
- Slope 25% and Over
- National Wetlands Inventory
- NYSDEC Wetlands Greater than 12.4 acres
- NYSDEC Wetlands Less than 12.4 acres
- Floodplains 100
- Floodplains 500

K08	K09	K10	K11
L08	L09	L10	L11
M08	M09	M10	M11
N08	N09	N10	N11
O08	O09	O10	O11
			O12
			O13

This map is for general information only and should not be used for site specific planning. Data was collected from a wide range of local, state, and federal GIS databases "as is." Westchester County assumes no liability to any party for any loss or damage caused by errors or omissions resulting from negligence, accident or any other cause.

