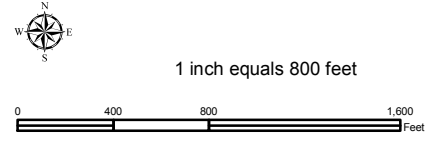
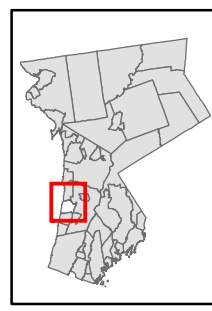


Natural Resource Inventory

Village of Irvington

Map # L06

TILE INDEX



Legend

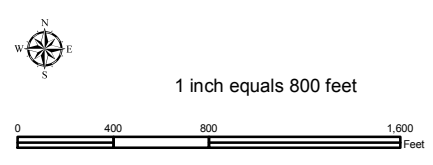
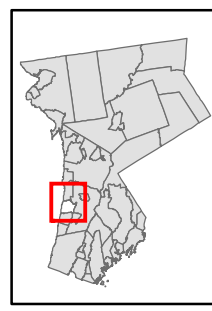
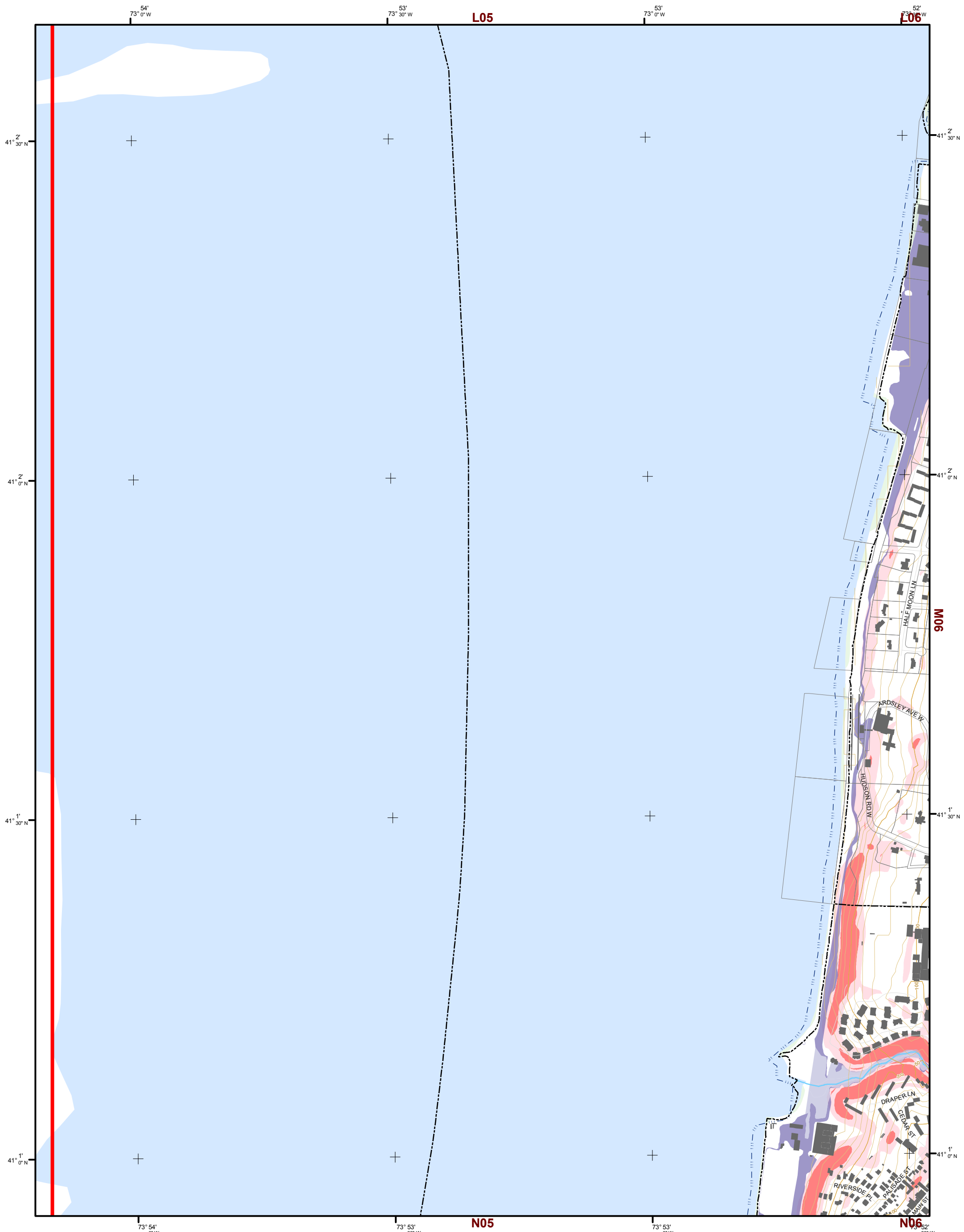
- 10' TOPO
- 50' TOPO
- Streams
- Lakes, Ponds or Reservoirs
- Aquifer
- Drainage Divides
- Hydric Soils
- Municipal Boundaries
- Tax Parcels
- Buildings
- Slope 15% - 25%
- Slope 25% and Over
- National Wetlands Inventory
- NYSDEC Wetlands Greater than 12.4 acres
- NYSDEC Wetlands Less than 12.4 acres
- Floodplains 100
- Floodplains 500

| | | |
|-----|-----|-----|
| K05 | K06 | K07 |
| L05 | L06 | L07 |
| M05 | M06 | M07 |
| N05 | N06 | N07 |

This map is for general information only and should not be used for site specific planning. Data was collected from a wide range of local, state, and federal GIS databases "as is." Westchester County assumes no liability to any party for any loss or damage caused by errors or omissions resulting from negligence, accident or any other cause.



Westchester County Board of Legislators
 Andrew J. Span, Westchester County Executive



Natural Resource Inventory

Village of Irvington

Map # M05

Legend

- 10' TOPO
- 50' TOPO
- Streams
- Lakes, Ponds or Reservoirs
- Aquifer
- Drainage Divides
- Hydric Soils
- Municipal Boundaries
- Tax Parcels
- Buildings
- Slope**
 - 15% - 25%
 - 25% and Over
- NYSDEC Wetlands**
 - Greater than 12.4 acres
 - Less than 12.4 acres
- Floodplains**
 - 100
 - 500
- National Wetlands Inventory

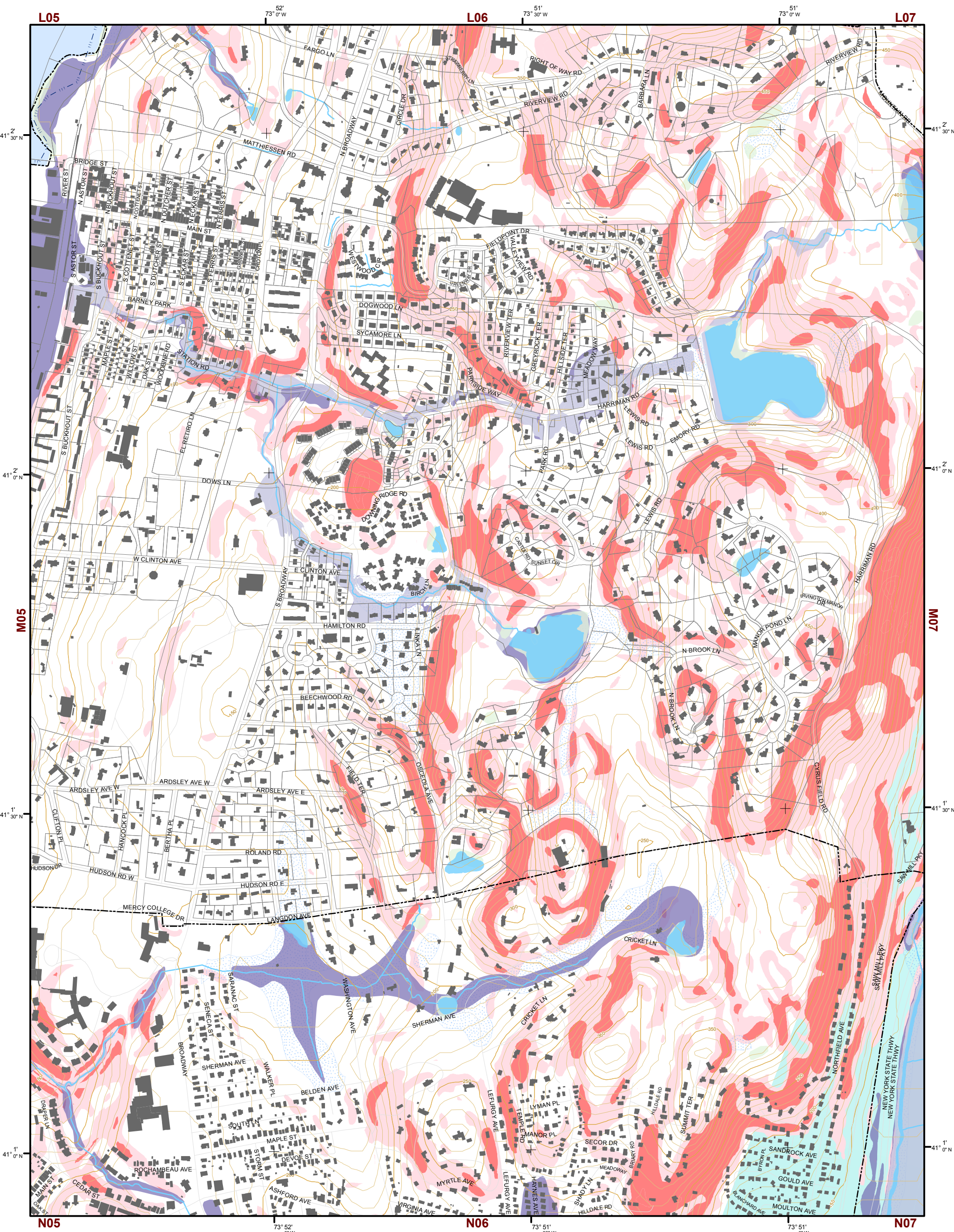
TILE INDEX

| | | |
|-----|-----|-----|
| K05 | K06 | K07 |
| L05 | L06 | L07 |
| M05 | M06 | M07 |
| N05 | N06 | N07 |

This map is for general information only and should not be used for site specific planning. Data was collected from a wide range of local, state, and federal GIS databases "as is." Westchester County assumes no liability to any party for any loss or damage caused by errors or omissions resulting from negligence, accident or any other cause.



Westchester
County Board of Legislators
Andrew J. Spano, Westchester County Executive



Natural Resource Inventory

Village of Irvington

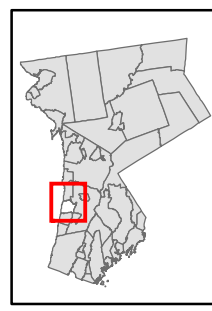
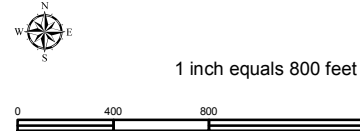
Map # M06

TILE INDEX

| | | |
|-----|-----|-----|
| K05 | K06 | K07 |
| L05 | L06 | L07 |
| M05 | M06 | M07 |
| N05 | N06 | N07 |

Legend

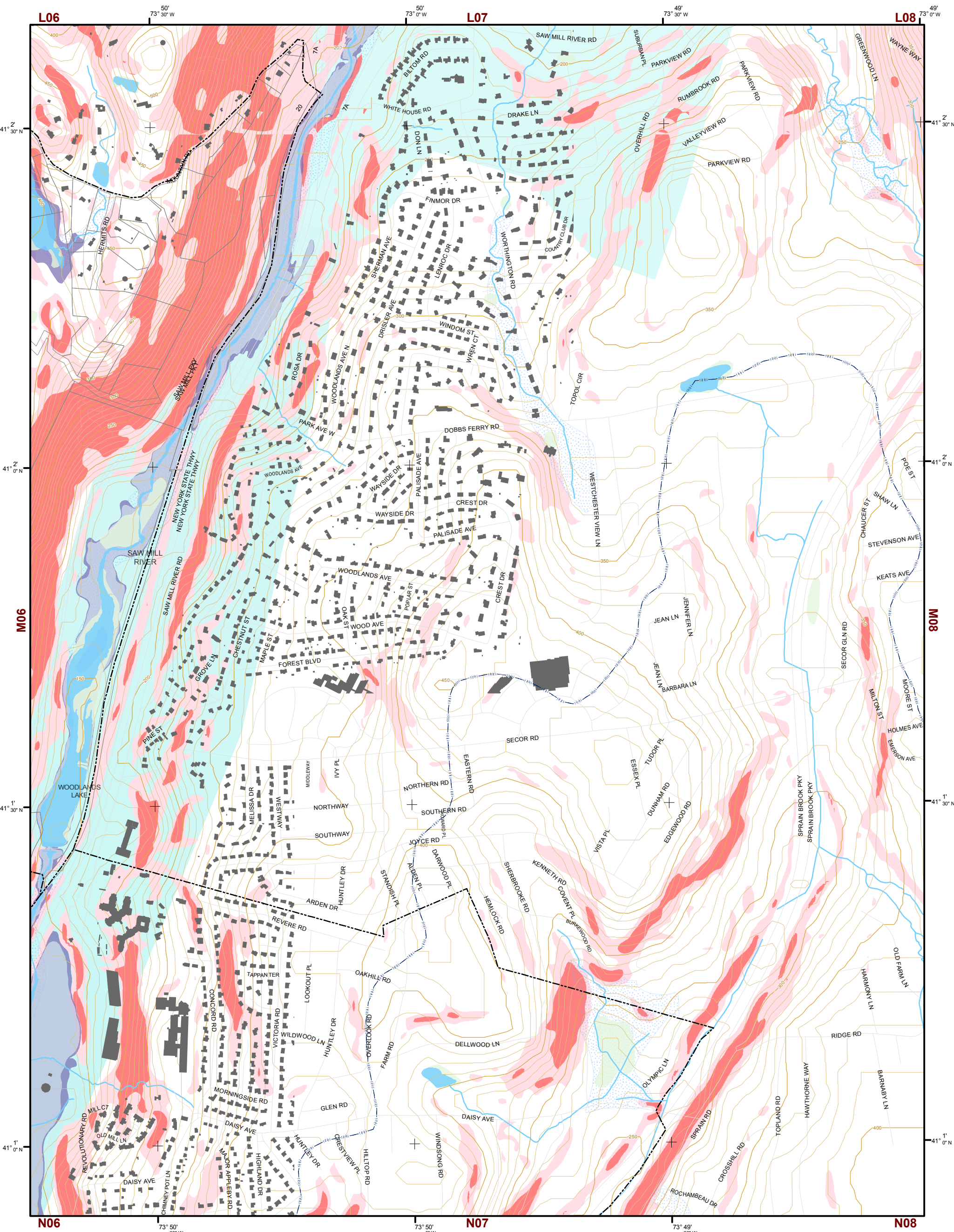
- 10' TOPO
- 50' TOPO
- Streams
- Lakes, Ponds or Reservoirs
- Aquifer
- Drainage Divides
- Hydric Soils
- Municipal Boundaries
- Tax Parcels
- Buildings
- Slope**
- 15% - 25%
- 25% and Over
- NYSDEC Wetlands**
- Greater than 12.4 acres
- Less than 12.4 acres
- Floodplains**
- 100
- 500
- National Wetlands Inventory



This map is for general information only and should not be used for site specific planning. Data was collected from a wide range of local, state, and federal GIS databases "as is." Westchester County assumes no liability to any party for any loss or damage caused by errors or omissions resulting from negligence, accident or any other cause.



Westchester COUNTY
 Andrew J. Span, Westchester County Executive
 County Board of Legislators

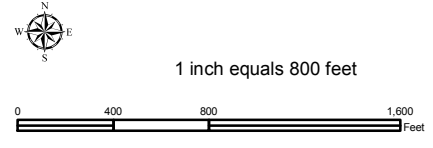
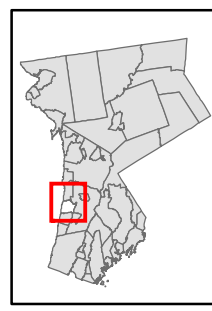


Natural Resource Inventory

Village of Irvington

Map # M07

TILE INDEX



- Legend**
- 10' TOPO
 - 50' TOPO
 - Streams
 - Lakes, Ponds or Reservoirs
 - Aquifer
 - Drainage Divides
 - Hydric Soils
 - Municipal Boundaries
 - Tax Parcels
 - Buildings
 - Slope 15% - 25%
 - Slope 25% and Over
 - National Wetlands Inventory

- NYSDEC Wetlands**
- Greater than 12.4 acres
 - Less than 12.4 acres
- Floodplains**
- 100
 - 500

| | | |
|-----|-----|-----|
| K05 | K06 | K07 |
| L05 | L06 | L07 |
| M05 | M06 | M07 |
| N05 | N06 | N07 |

This map is for general information only and should not be used for site specific planning. Data was collected from a wide range of local, state, and federal GIS databases "as is." Westchester County assumes no liability to any party for any loss or damage caused by errors or omissions resulting from negligence, accident or any other cause.

