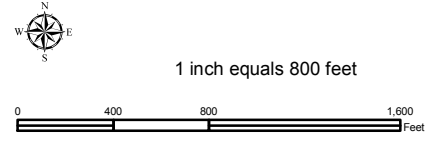
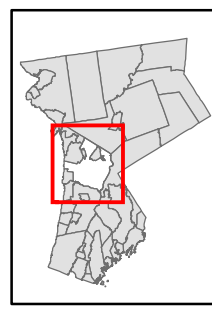


Natural Resource Inventory

Town of Mt. Pleasant

Map # H08

TILE INDEX



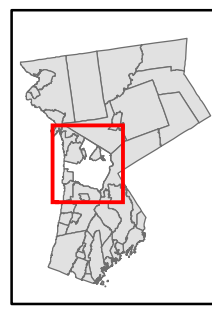
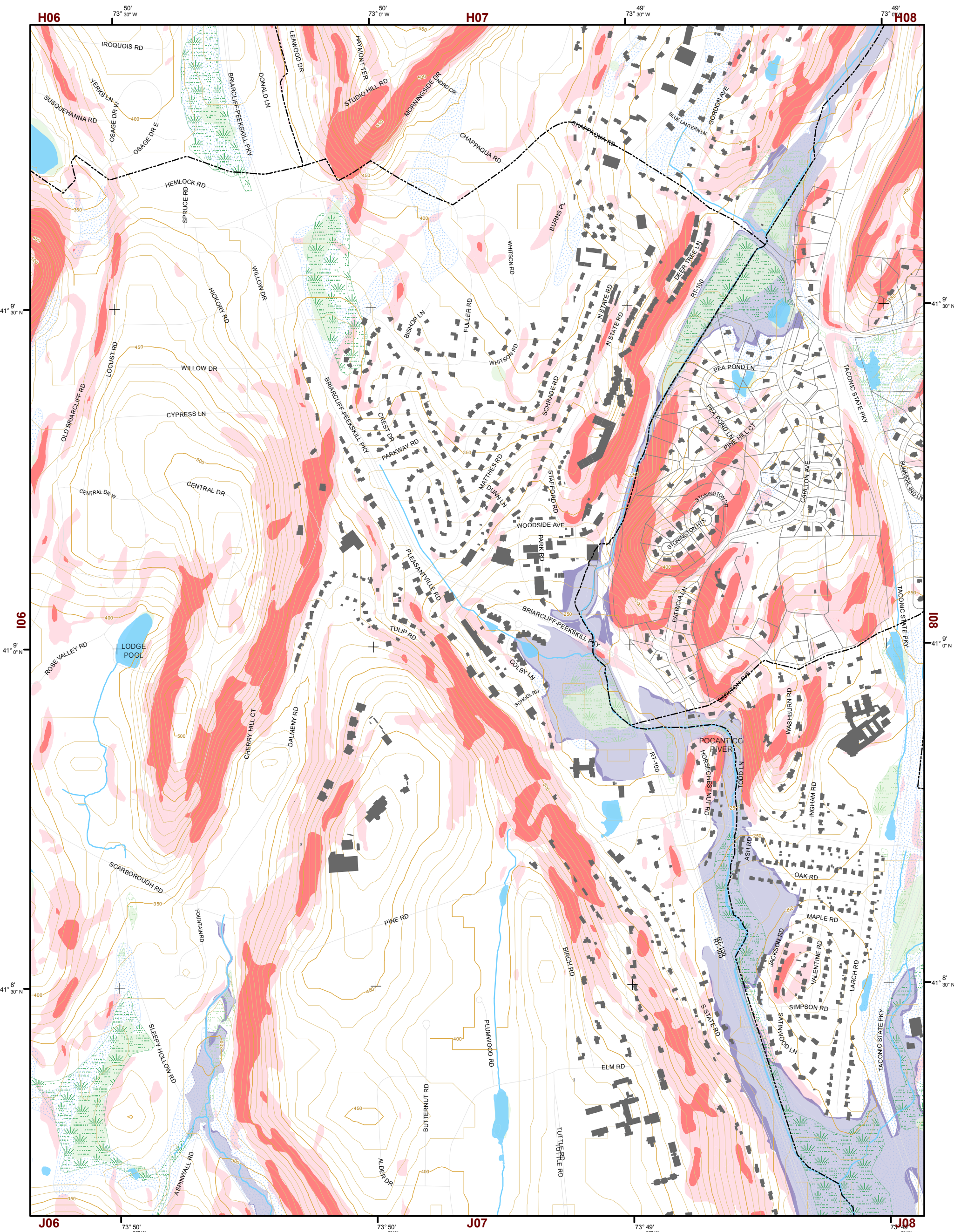
- Legend**
- 10' TOPO
 - 50' TOPO
 - Streams
 - Lakes, Ponds or Reservoirs
 - Aquifer
 - Drainage Divides
 - Hydric Soils
 - Municipal Boundaries
 - Tax Parcels
 - Buildings
 - Slope 15% - 25%
 - Slope 25% and Over
 - National Wetlands Inventory
 - NYSDEC Wetlands Greater than 12.4 acres
 - NYSDEC Wetlands Less than 12.4 acres
 - Floodplains 100
 - Floodplains 500

H05	H06	H07	H08	H09	H10	H11
I05	I06	I07	I08	I09	I10	I11
J06	J07	J08	J09	J10	J11	
K05	K06	K07	K08	K09	K10	K11
L05	L06	L07	L08	L09	L10	L11

This map is for general information only and should not be used for site specific planning. Data was collected from a wide range of local, state, and federal GIS databases "as is." Westchester County assumes no liability to any party for any loss or damage caused by errors or omissions resulting from negligence, accident or any other cause.



Westchester County Board of Legislators
 Andrew J. Span, Westchester County Executive

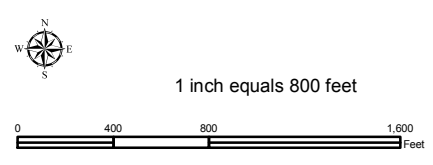


Natural Resource Inventory

Town of Mt. Pleasant

Map # 107

TILE INDEX



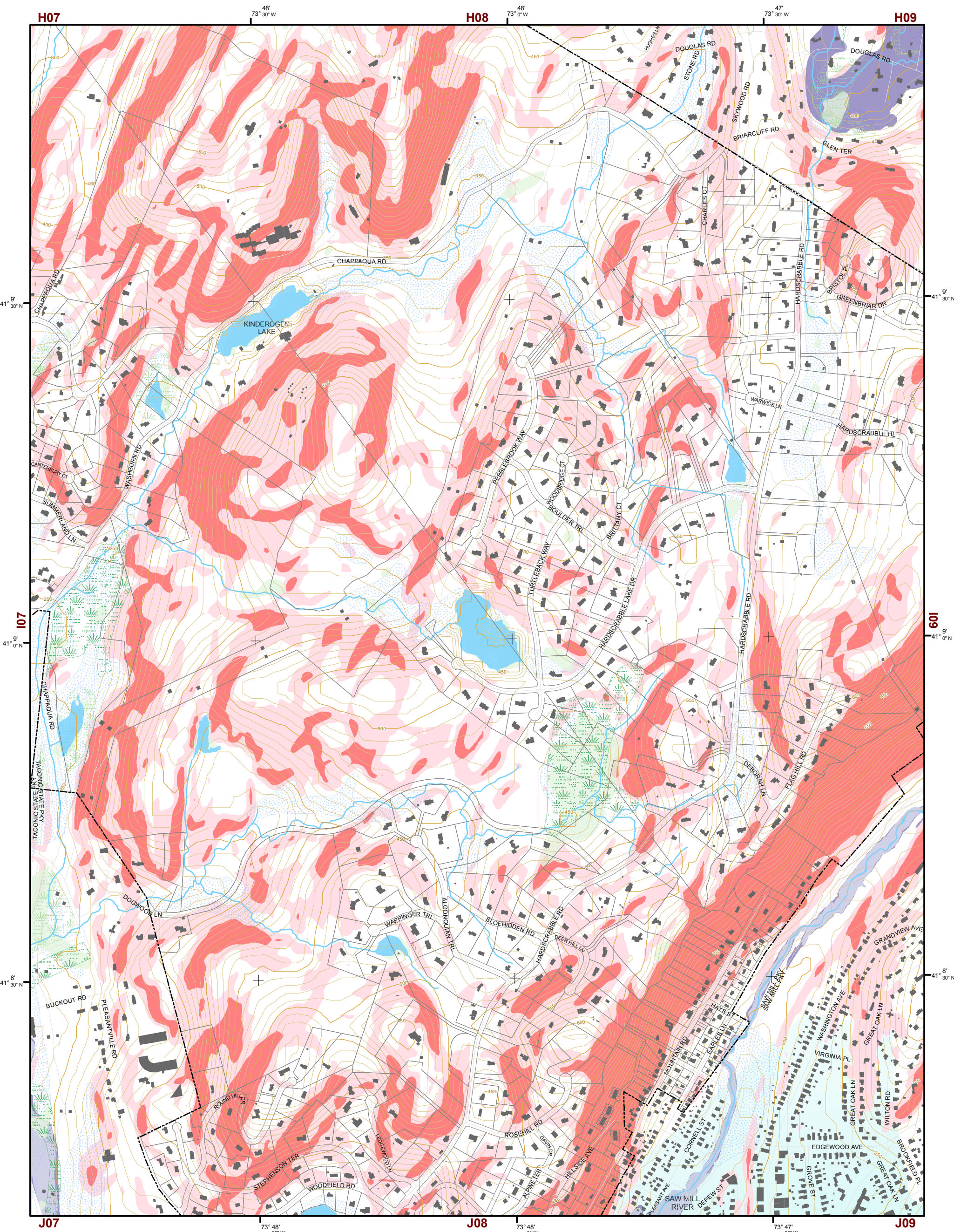
Legend

- 10' TOPO
- 50' TOPO
- Streams
- Lakes, Ponds or Reservoirs
- Aquifer
- Drainage Divides
- Hydric Soils
- Municipal Boundaries
- Tax Parcels
- Buildings
- Slope 15% - 25%
- Slope 25% and Over
- National Wetlands Inventory
- NYSDEC Wetlands Greater than 12.4 acres
- NYSDEC Wetlands Less than 12.4 acres
- Floodplains 100
- Floodplains 500

H05	H06	H07	H08	H09	H10	H11
I05	I06	I07	I08	I09	I10	I11
J06	J07	J08	J09	J10	J11	
K05	K06	K07	K08	K09	K10	K11
L05	L06	L07	L08	L09	L10	L11

This map is for general information only and should not be used for site specific planning. Data was collected from a wide range of local, state, and federal GIS databases "as is." Westchester County assumes no liability to any party for any loss or damage caused by errors or omissions resulting from negligence, accident or any other cause.



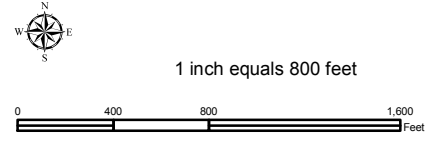
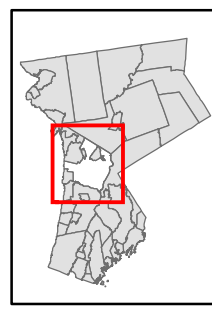


Natural Resource Inventory

Town of Mt. Pleasant

Map # 108

TILE INDEX



Legend

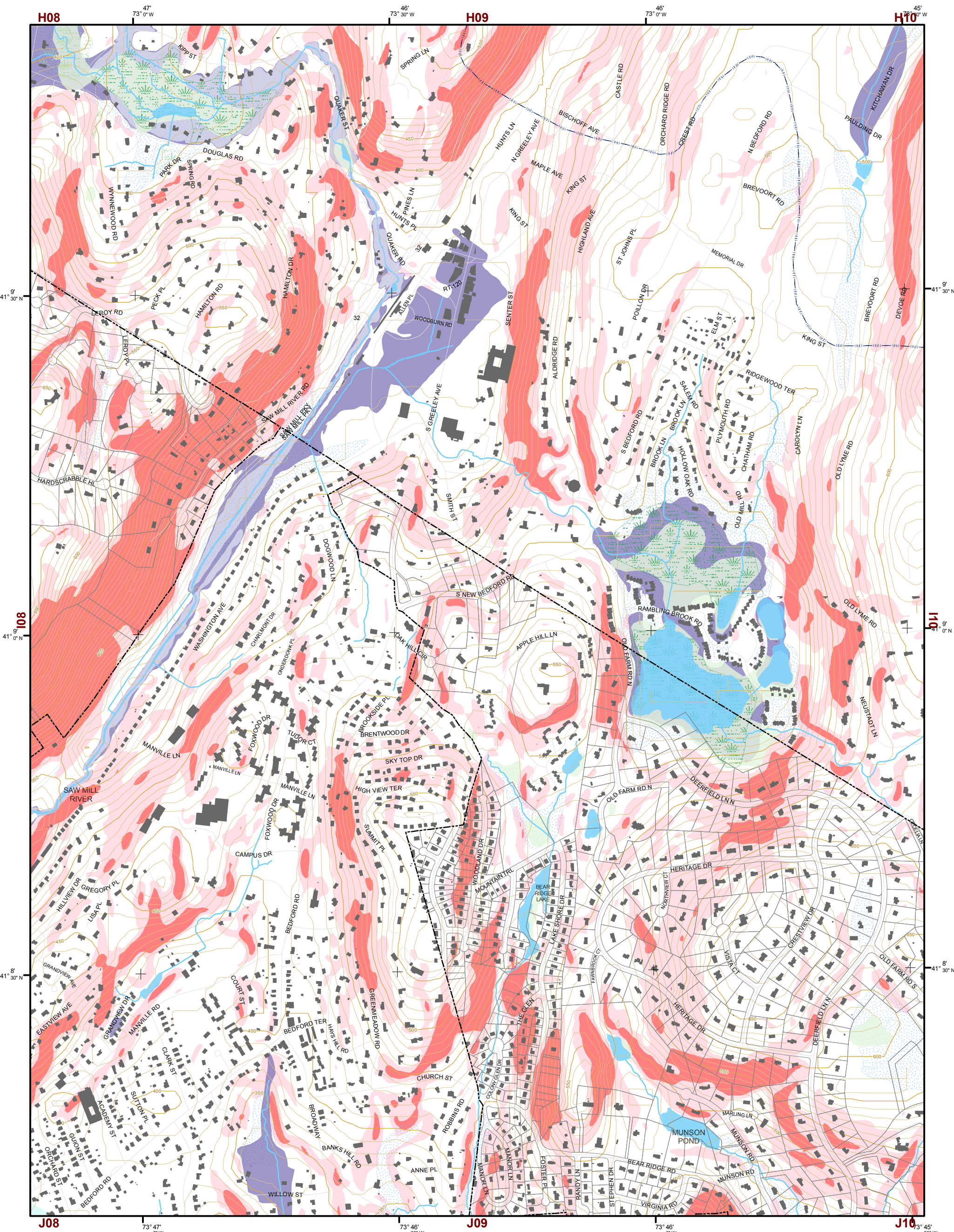
- 10' TOPO
- 50' TOPO
- Streams
- Lakes, Ponds or Reservoirs
- Aquifer
- Drainage Divides
- Hydric Soils
- Municipal Boundaries
- Tax Parcels
- Buildings
- Slope**
- 15% - 25%
- 25% and Over
- National Wetlands Inventory
- NYSDEC Wetlands**
- Greater than 12.4 acres
- Less than 12.4 acres
- Floodplains**
- 100
- 500

H05	H06	H07	H08	H09	H10	H11
I05	I06	I07	I08	I09	I10	I11
J06	J07	J08	J09	J10	J11	
K05	K06	K07	K08	K09	K10	K11
L05	L06	L07	L08	L09	L10	L11

This map is for general information only and should not be used for site specific planning. Data was collected from a wide range of local, state, and federal GIS databases "as is." Westchester County assumes no liability to any party for any loss or damage caused by errors or omissions resulting from negligence, accident or any other cause.



Westchester County Board of Legislators
Andrew J. Span, Westchester County Executive

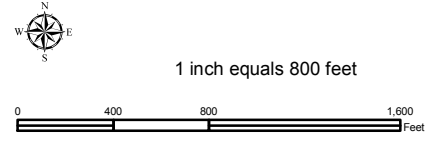
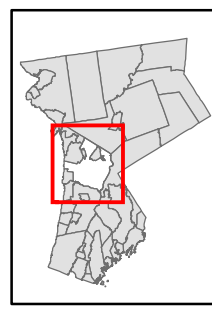


Natural Resource Inventory

Town of Mt. Pleasant

Map # 109

TILE INDEX



Legend

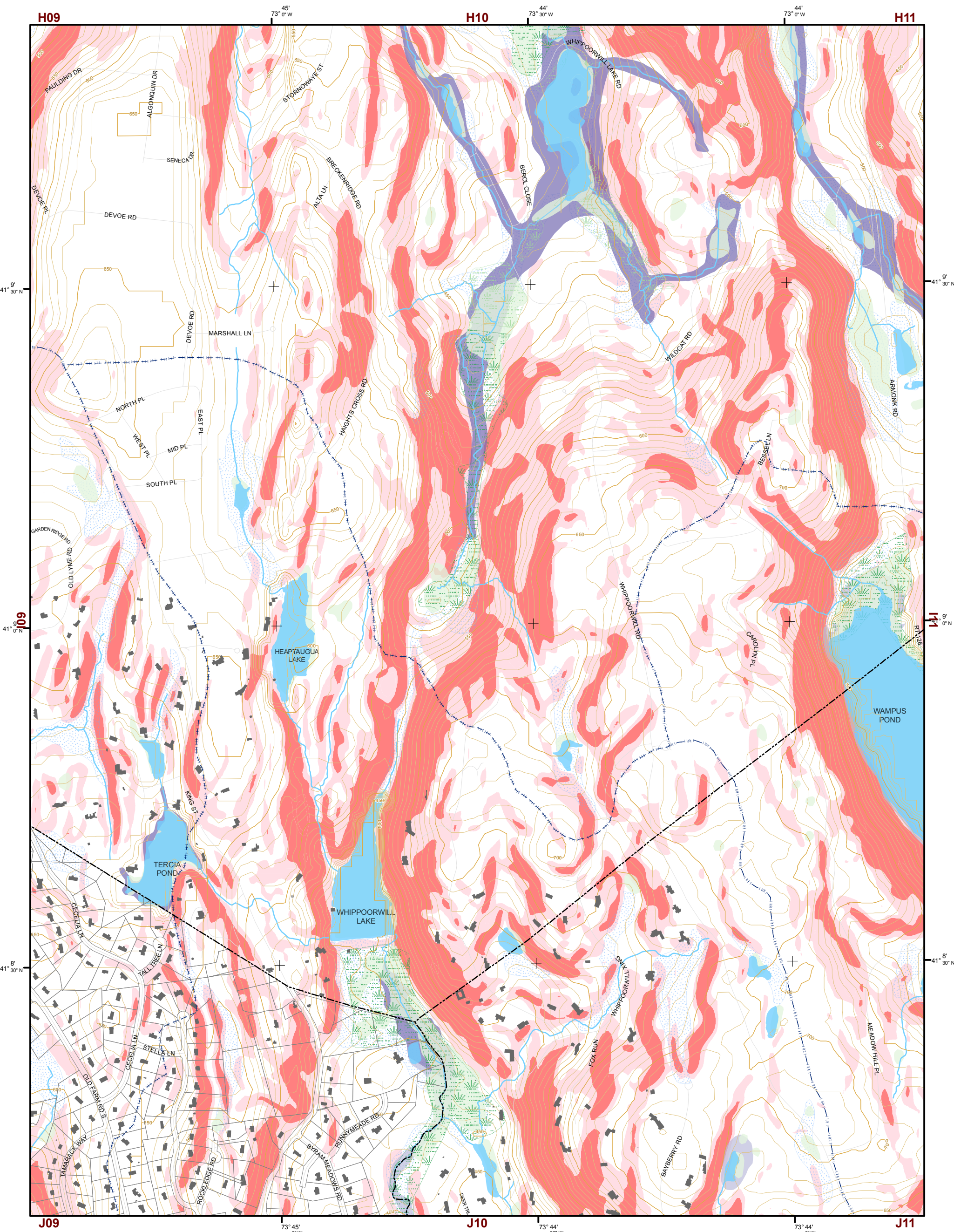
- 10' TOPO
- 50' TOPO
- Streams
- Lakes, Ponds or Reservoirs
- Aquifer
- Drainage Divides
- Hydric Soils
- Municipal Boundaries
- Tax Parcels
- Buildings
- Slope 15% - 25%
- Slope 25% and Over
- National Wetlands Inventory
- NYSDEC Wetlands Greater than 12.4 acres
- NYSDEC Wetlands Less than 12.4 acres
- Floodplains 100
- Floodplains 500

H05	H06	H07	H08	H09	H10	H11
I05	I06	I07	I08	I09	I10	I11
J06	J07	J08	J09	J10	J11	
K05	K06	K07	K08	K09	K10	K11
L05	L06	L07	L08	L09	L10	L11

This map is for general information only and should not be used for site specific planning. Data was collected from a wide range of local, state, and federal GIS databases "as is." Westchester County assumes no liability to any party for any loss or damage caused by errors or omissions resulting from negligence, accident or any other cause.



Westchester County Board of Legislators
 Andrew J. Span, Westchester County Executive

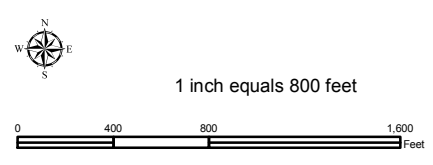
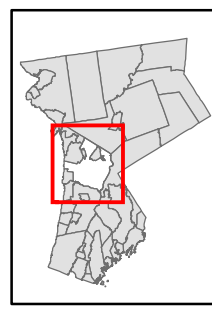


Natural Resource Inventory

Town of Mt. Pleasant

Map # I10

TILE INDEX



Legend

- 10' TOPO
- 50' TOPO
- Streams
- Lakes, Ponds or Reservoirs
- Aquifer
- Drainage Divides
- Hydric Soils
- Municipal Boundaries
- Tax Parcels
- Buildings
- Slope 15% - 25%
- Slope 25% and Over
- National Wetlands Inventory

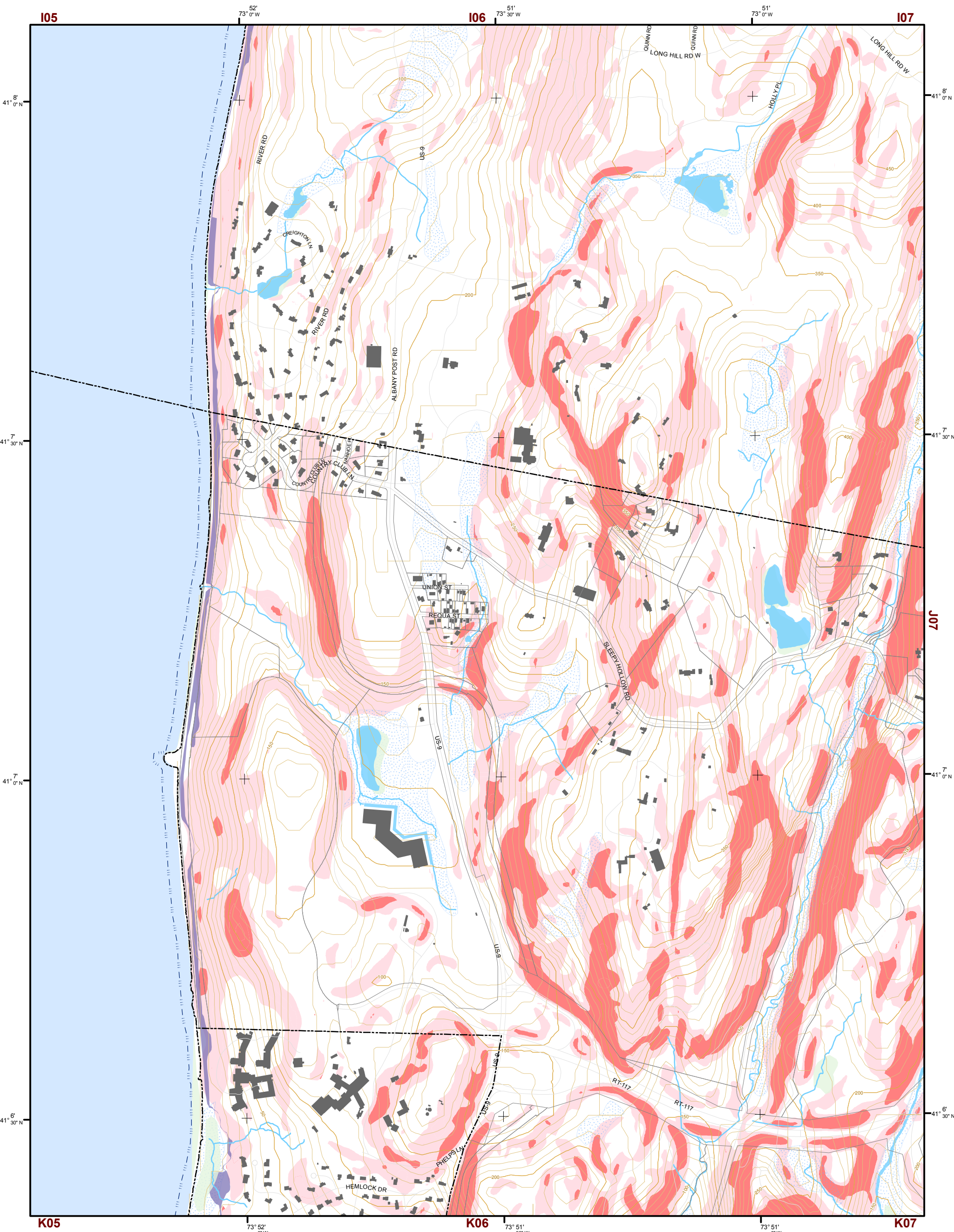
- NYSDEC Wetlands Greater than 12.4 acres
- NYSDEC Wetlands Less than 12.4 acres
- Floodplains 100
- Floodplains 500

H05	H06	H07	H08	H09	H10	H11
I05	I06	I07	I08	I09	I10	I11
J06	J07	J08	J09	J10	J11	
K05	K06	K07	K08	K09	K10	K11
L05	L06	L07	L08	L09	L10	L11

This map is for general information only and should not be used for site specific planning. Data was collected from a wide range of local, state, and federal GIS databases "as is." Westchester County assumes no liability to any party for any loss or damage caused by errors or omissions resulting from negligence, accident or any other cause.



Westchester County Board of Legislators

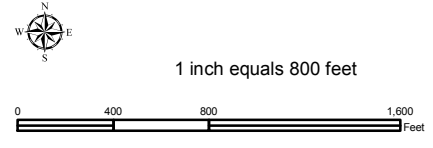
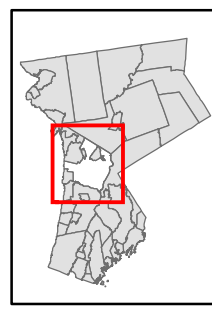


Natural Resource Inventory

Town of Mt. Pleasant

Map # J06

TILE INDEX



Legend

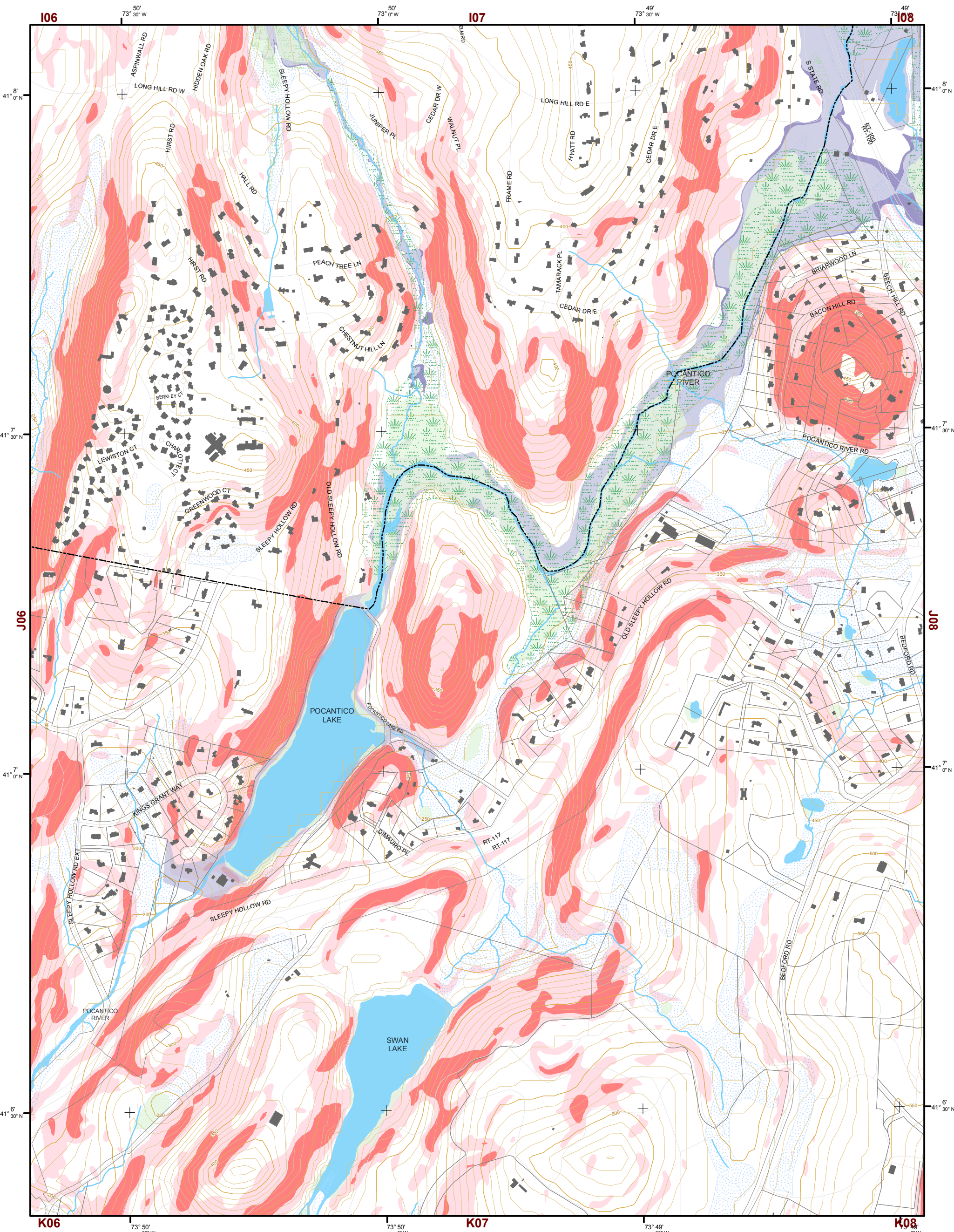
- 10' TOPO
- 50' TOPO
- Streams
- Lakes, Ponds or Reservoirs
- Aquifer
- Drainage Divides
- Hydric Soils
- Municipal Boundaries
- Tax Parcels
- Buildings
- Slope 15% - 25%
- Slope 25% and Over
- NYSDEC Wetlands Greater than 12.4 acres
- NYSDEC Wetlands Less than 12.4 acres
- Floodplains 100
- Floodplains 500
- National Wetlands Inventory

H05	H06	H07	H08	H09	H10	H11
I05	I06	I07	I08	I09	I10	I11
J05	J06	J07	J08	J09	J10	J11
K05	K06	K07	K08	K09	K10	K11
L05	L06	L07	L08	L09	L10	L11

This map is for general information only and should not be used for site specific planning. Data was collected from a wide range of local, state, and federal GIS databases "as is." Westchester County assumes no liability to any party for any loss or damage caused by errors or omissions resulting from negligence, accident or any other cause.



Westchester County Board of Legislators
Andrew J. Span, Westchester County Executive

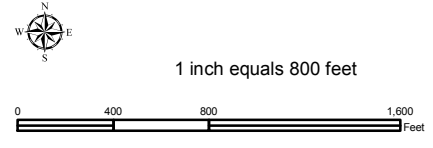
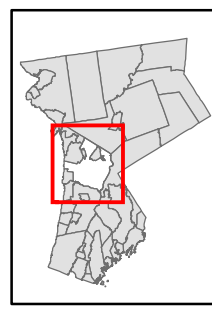


Natural Resource Inventory

Town of Mt. Pleasant

Map # J07

TILE INDEX



Legend

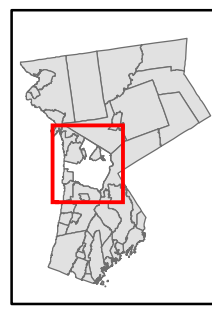
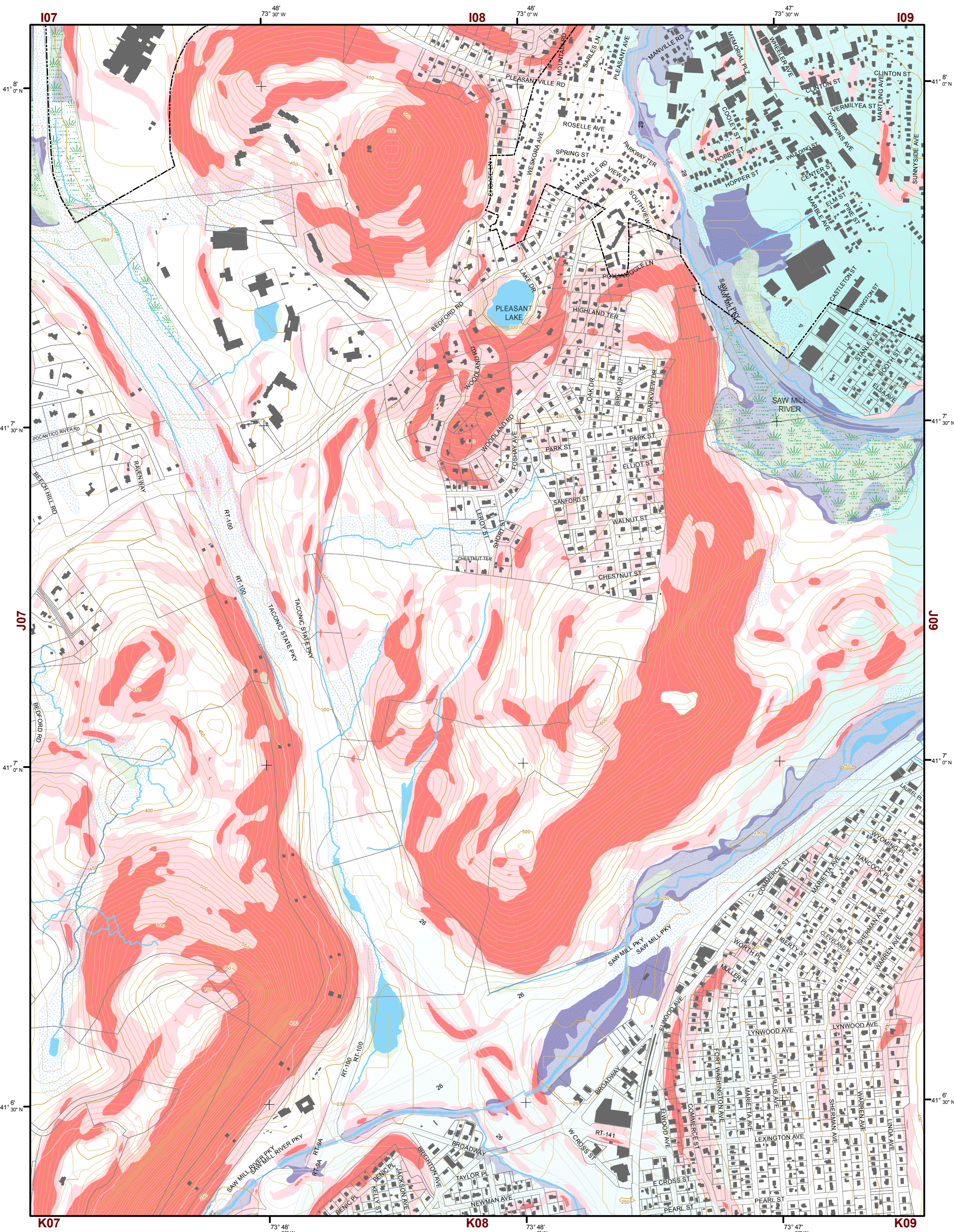
- 10' TOPO
- 50' TOPO
- Streams
- Lakes, Ponds or Reservoirs
- Aquifer
- Drainage Divides
- Hydric Soils
- Municipal Boundaries
- Tax Parcels
- Buildings
- Slope 15% - 25%
- Slope 25% and Over
- National Wetlands Inventory
- NYSDEC Wetlands Greater than 12.4 acres
- NYSDEC Wetlands Less than 12.4 acres
- Floodplains 100
- Floodplains 500

H05	H06	H07	H08	H09	H10	H11
I05	I06	I07	I08	I09	I10	I11
J06	J07	J08	J09	J10	J11	
K05	K06	K07	K08	K09	K10	K11
L05	L06	L07	L08	L09	L10	L11

This map is for general information only and should not be used for site specific planning. Data was collected from a wide range of local, state, and federal GIS databases "as is." Westchester County assumes no liability to any party for any loss or damage caused by errors or omissions resulting from negligence, accident or any other cause.

Westchester County Board of Legislators
 Andrew J. Span, Westchester County Executive



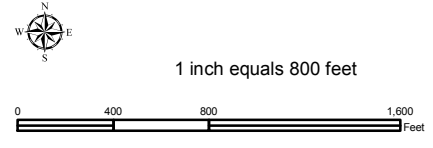


Natural Resource Inventory

Town of Mt. Pleasant

Map # J08

TILE INDEX



Legend

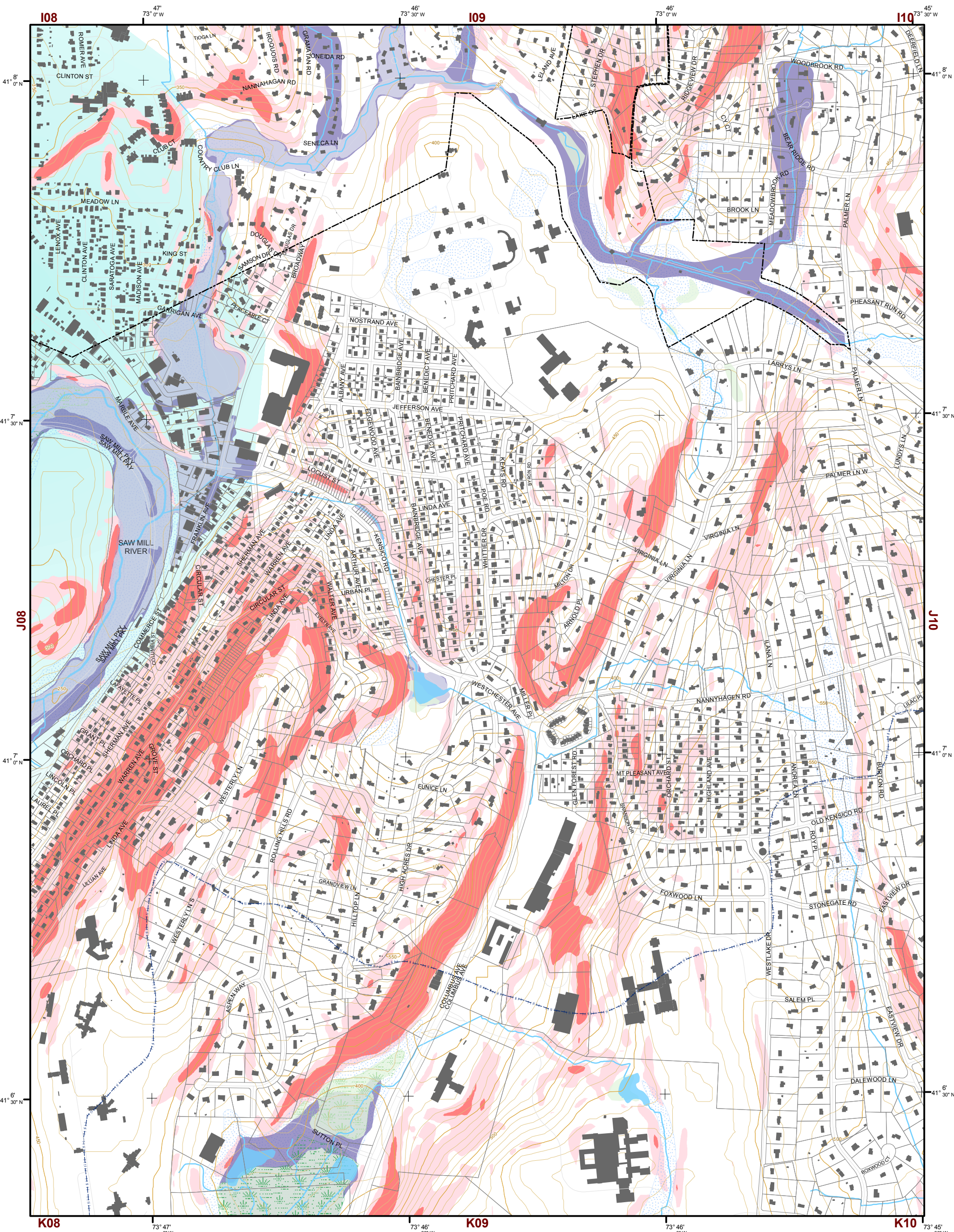
- 10' TOPO
- 50' TOPO
- Streams
- Lakes, Ponds or Reservoirs
- Aquifer
- Drainage Divides
- Hydric Soils
- Municipal Boundaries
- Tax Parcels
- Buildings
- Slope 15% - 25%
- Slope 25% and Over
- National Wetlands Inventory
- NYSDEC Wetlands Greater than 12.4 acres
- NYSDEC Wetlands Less than 12.4 acres
- Floodplains 100
- Floodplains 500

H05	H06	H07	H08	H09	H10	H11
I05	I06	I07	I08	I09	I10	I11
J06	J07	J08	J09	J10	J11	
K05	K06	K07	K08	K09	K10	K11
L05	L06	L07	L08	L09	L10	L11

This map is for general information only and should not be used for site specific planning. Data was collected from a wide range of local, state, and federal GIS databases "as is." Westchester County assumes no liability to any party for any loss or damage caused by errors or omissions resulting from negligence, accident or any other cause.



Westchester County Board of Legislators
 Andrew J. Span, Westchester County Executive

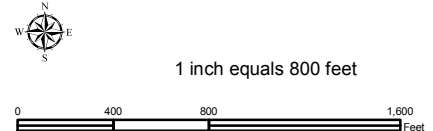
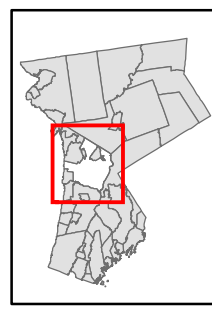


Natural Resource Inventory

Town of Mt. Pleasant

Map # J09

TILE INDEX



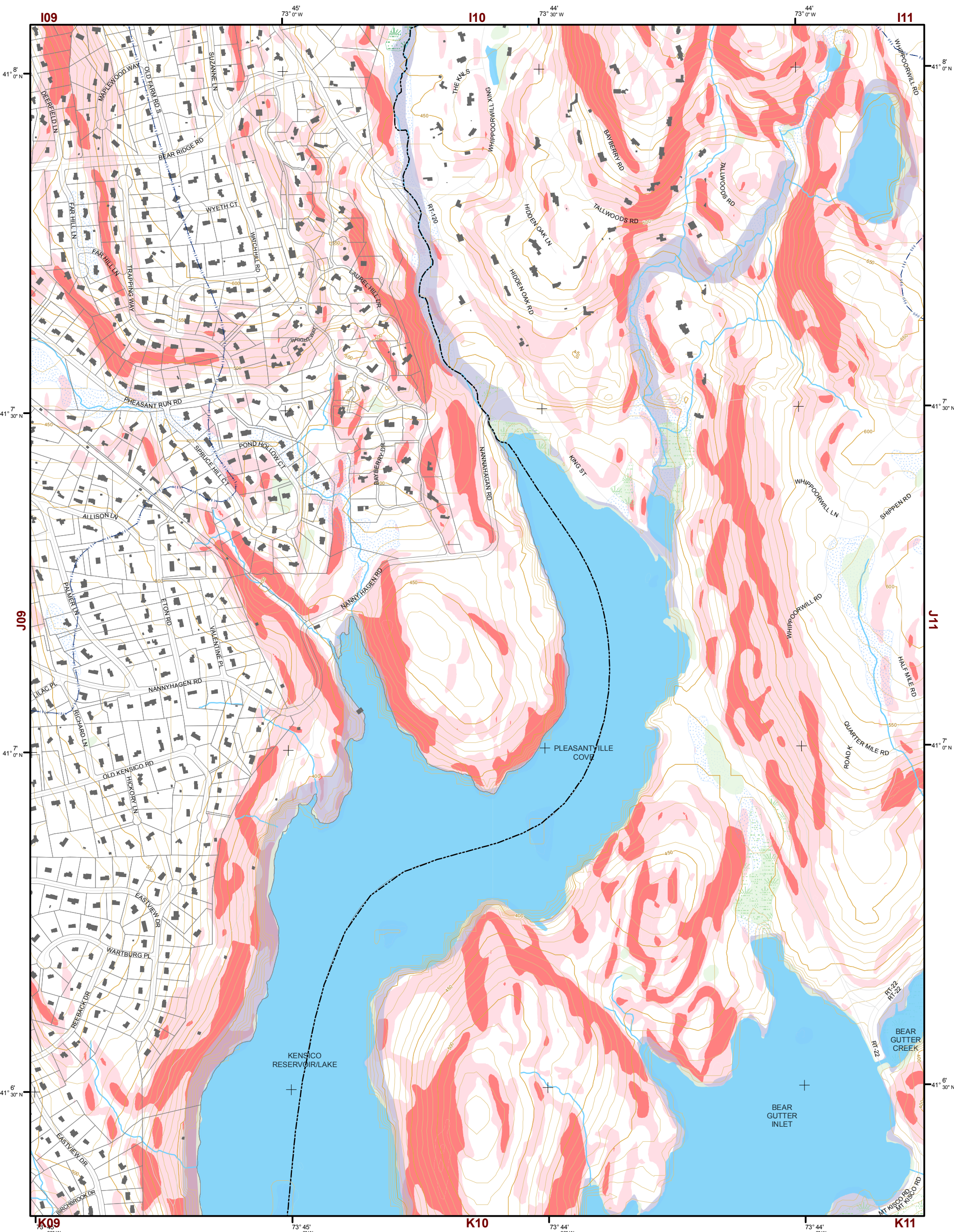
Legend

- 10' TOPO
- 50' TOPO
- Streams
- Lakes, Ponds or Reservoirs
- Aquifer
- Drainage Divides
- Hydric Soils
- Municipal Boundaries
- Tax Parcels
- Buildings
- Slope 15% - 25%
- Slope 25% and Over
- National Wetlands Inventory
- NYSDEC Wetlands Greater than 12.4 acres
- NYSDEC Wetlands Less than 12.4 acres
- Floodplains 100
- Floodplains 500

H05	H06	H07	H08	H09	H10	H11
I05	I06	I07	I08	I09	I10	I11
J06	J07	J08	J09	J10	J11	
K05	K06	K07	K08	K09	K10	K11
L05	L06	L07	L08	L09	L10	L11

This map is for general information only and should not be used for site specific planning. Data was collected from a wide range of local, state, and federal GIS databases "as is." Westchester County assumes no liability to any party for any loss or damage caused by errors or omissions resulting from negligence, accident or any other cause.



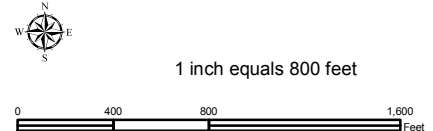
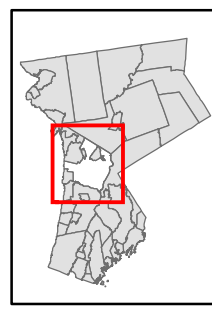


Natural Resource Inventory

Town of Mt. Pleasant

Map # J10

TILE INDEX



Legend

- 10' TOPO
- 50' TOPO
- Streams
- Lakes, Ponds or Reservoirs
- Aquifer
- Drainage Divides
- Hydric Soils
- Municipal Boundaries
- Tax Parcels
- Buildings
- Slope**
- 15% - 25%
- 25% and Over
- National Wetlands Inventory

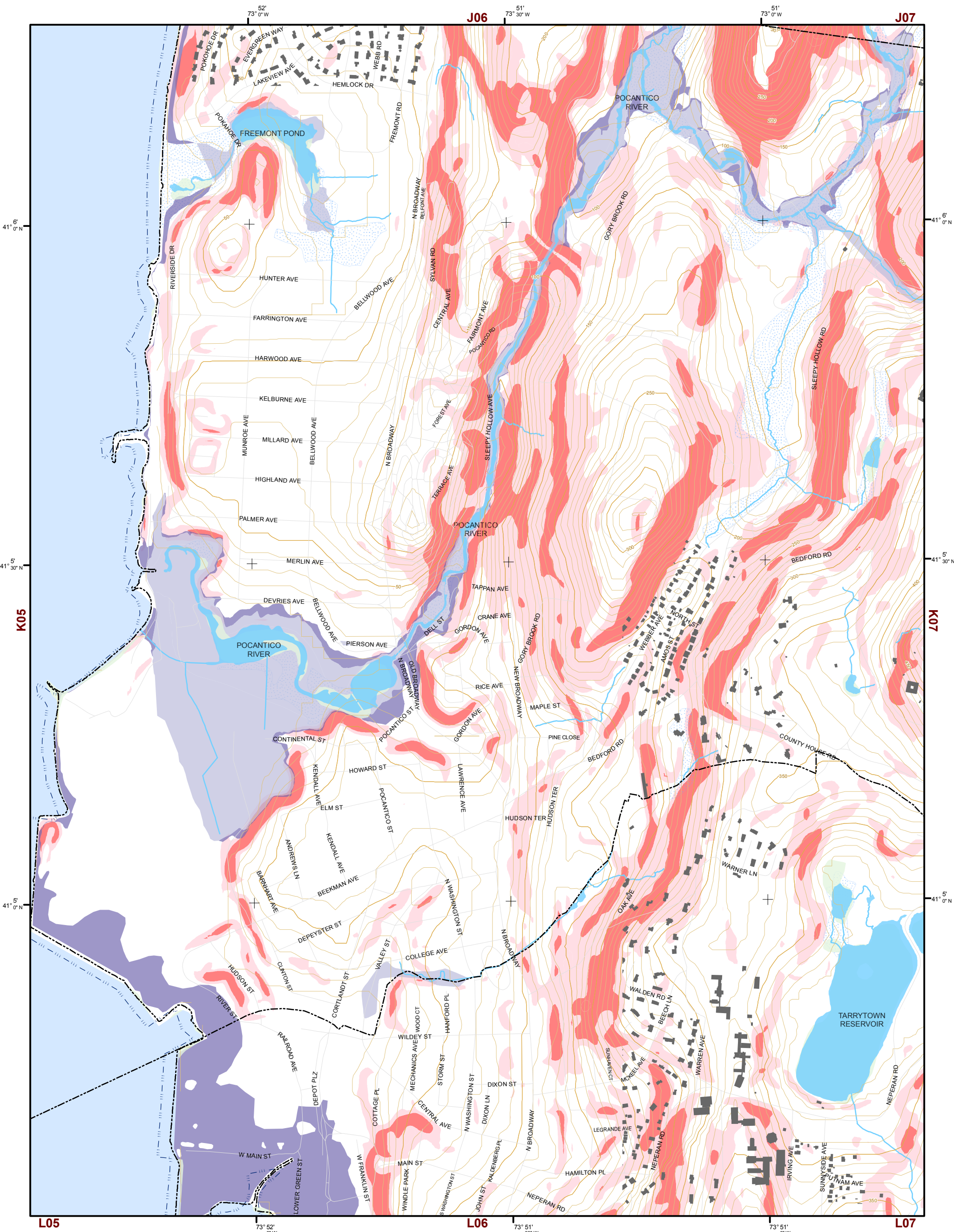
- NYSDEC Wetlands**
- Greater than 12.4 acres
- Less than 12.4 acres
- Floodplains**
- 100
- 500

H05	H06	H07	H08	H09	H10	H11
I05	I06	I07	I08	I09	I10	I11
J06	J07	J08	J09	J10	J11	
K05	K06	K07	K08	K09	K10	K11
L05	L06	L07	L08	L09	L10	L11

This map is for general information only and should not be used for site specific planning. Data was collected from a wide range of local, state, and federal GIS databases "as is." Westchester County assumes no liability to any party for any loss or damage caused by errors or omissions resulting from negligence, accident or any other cause.



Westchester County Board of Legislators
 Andrew J. Span, Westchester County Executive

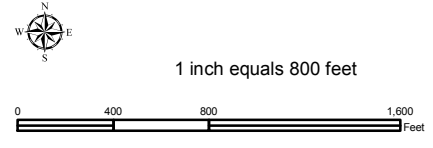
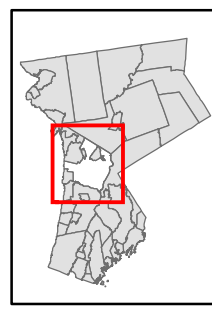


Natural Resource Inventory

Town of Mt. Pleasant

Map # K06

TILE INDEX



Legend

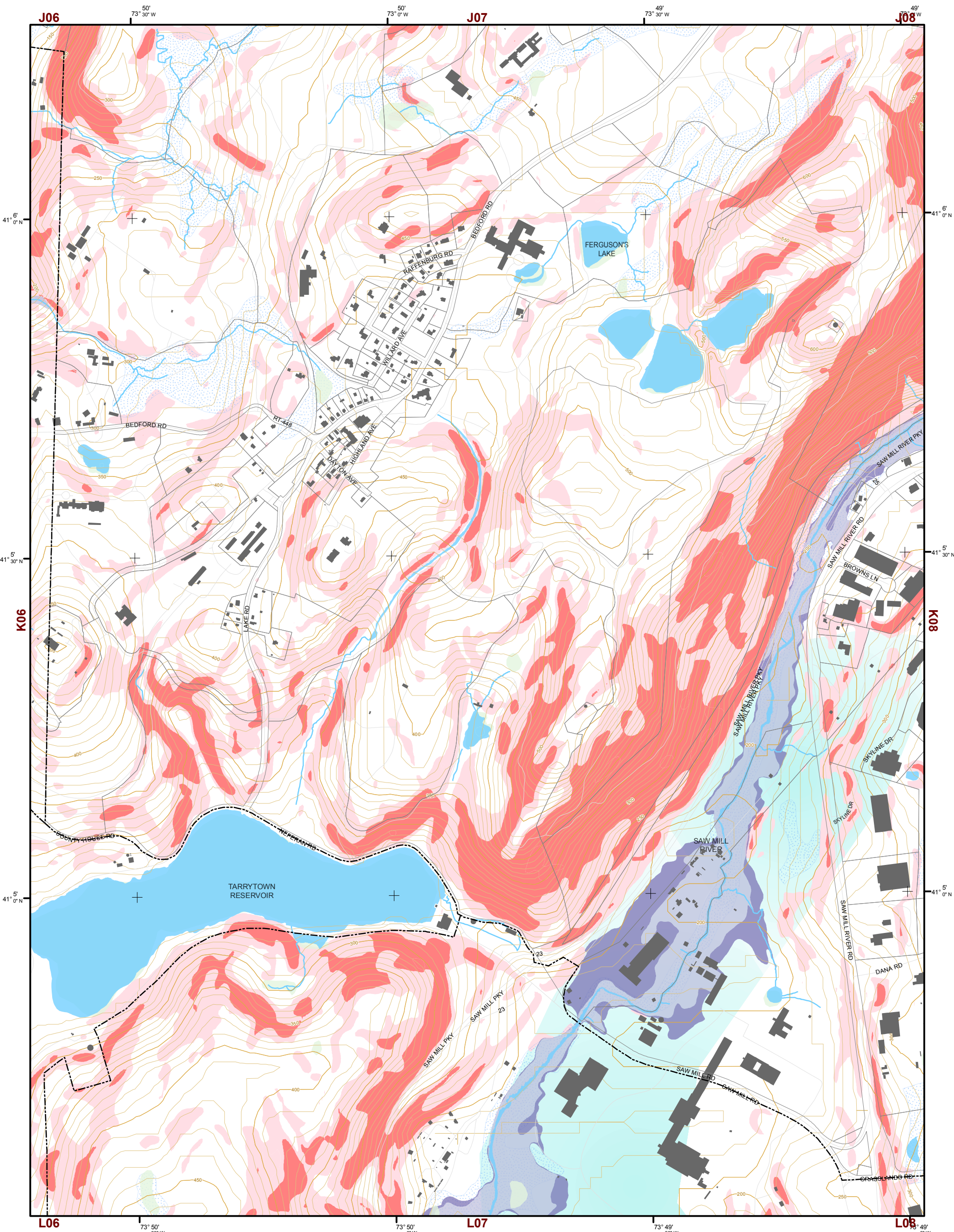
- 10' TOPO
- 50' TOPO
- Streams
- Lakes, Ponds or Reservoirs
- Aquifer
- Drainage Divides
- Hydric Soils
- Municipal Boundaries
- Tax Parcels
- Buildings
- Slope 15% - 25%
- Slope 25% and Over
- National Wetlands Inventory
- NYSDEC Wetlands Greater than 12.4 acres
- NYSDEC Wetlands Less than 12.4 acres
- Floodplains 100
- Floodplains 500

H05	H06	H07	H08	H09	H10	H11
I05	I06	I07	I08	I09	I10	I11
J05	J06	J07	J08	J09	J10	J11
K05	K06	K07	K08	K09	K10	K11
L05	L06	L07	L08	L09	L10	L11

This map is for general information only and should not be used for site specific planning. Data was collected from a wide range of local, state, and federal GIS databases "as is." Westchester County assumes no liability to any party for any loss or damage caused by errors or omissions resulting from negligence, accident or any other cause.



Westchester County Board of Legislators

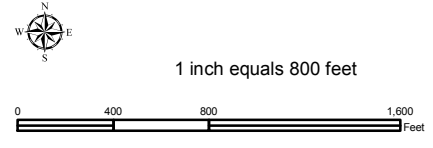
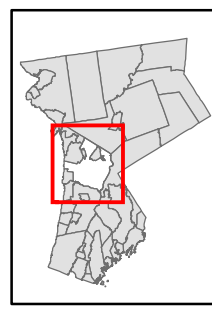


Natural Resource Inventory

Town of Mt. Pleasant

Map # K07

TILE INDEX



Legend

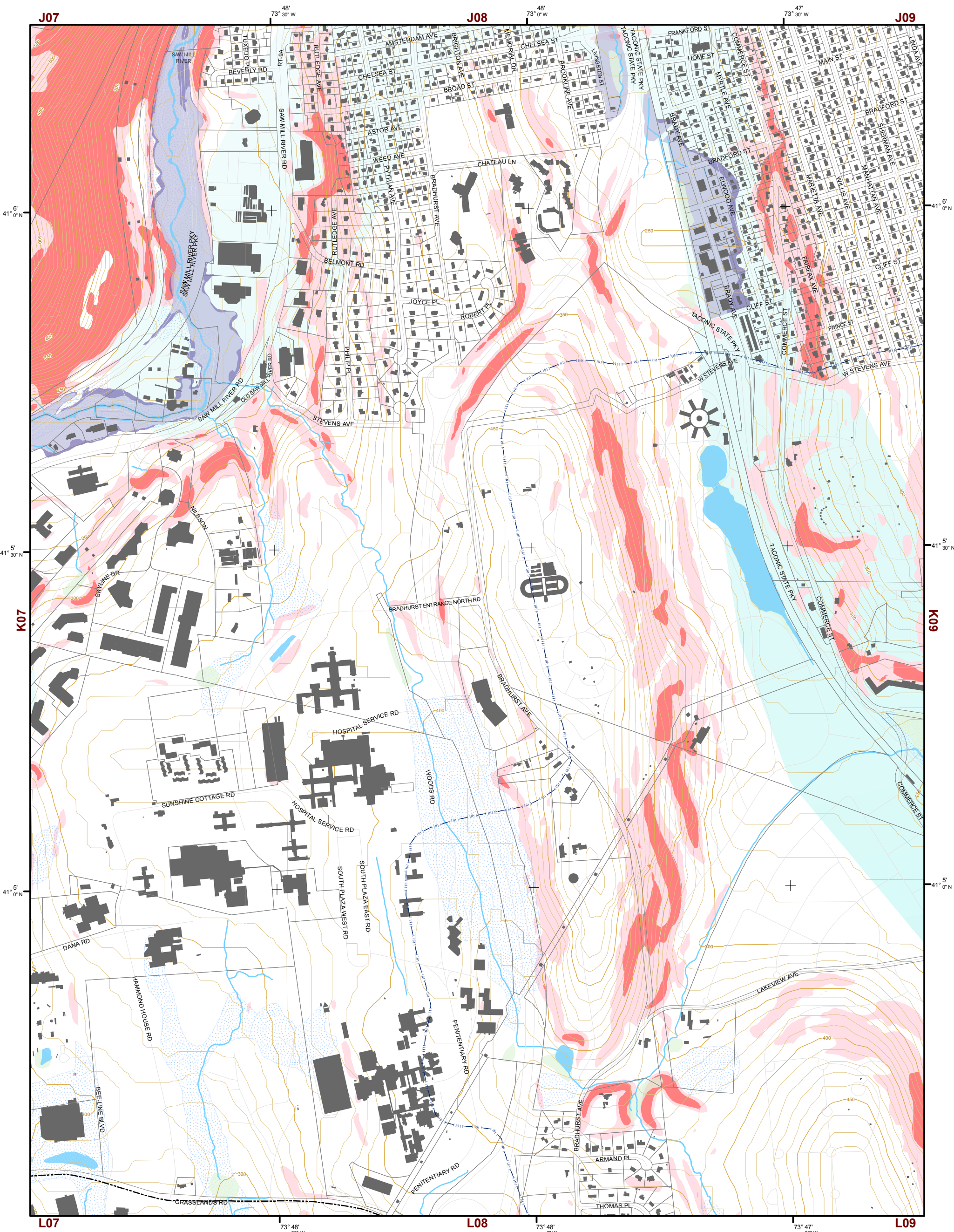
- 10' TOPO
- 50' TOPO
- Streams
- Lakes, Ponds or Reservoirs
- Aquifer
- Drainage Divides
- Hydric Soils
- Municipal Boundaries
- Tax Parcels
- Buildings
- Slope**
 - 15% - 25%
 - 25% and Over
- NYSDEC Wetlands**
 - Greater than 12.4 acres
 - Less than 12.4 acres
- Floodplains**
 - 100
 - 500
- National Wetlands Inventory

H05	H06	H07	H08	H09	H10	H11
I05	I06	I07	I08	I09	I10	I11
J06	J07	J08	J09	J10	J11	
K05	K06	K07	K08	K09	K10	K11
L05	L06	L07	L08	L09	L10	L11

This map is for general information only and should not be used for site specific planning. Data was collected from a wide range of local, state, and federal GIS databases "as is." Westchester County assumes no liability to any party for any loss or damage caused by errors or omissions resulting from negligence, accident or any other cause.



Westchester County Board of Legislators
Andrew J. Span, Westchester County Executive

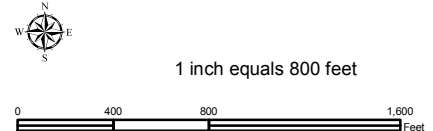
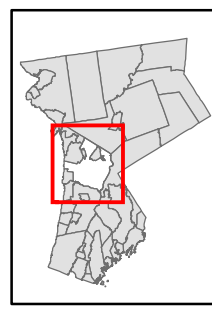


Natural Resource Inventory

Town of Mt. Pleasant

Map # K08

TILE INDEX



Legend

- 10' TOPO
- 50' TOPO
- Streams
- Lakes, Ponds or Reservoirs
- Aquifer
- Drainage Divides
- Hydric Soils
- Municipal Boundaries
- Tax Parcels
- Buildings
- Slope 15% - 25%
- Slope 25% and Over
- National Wetlands Inventory

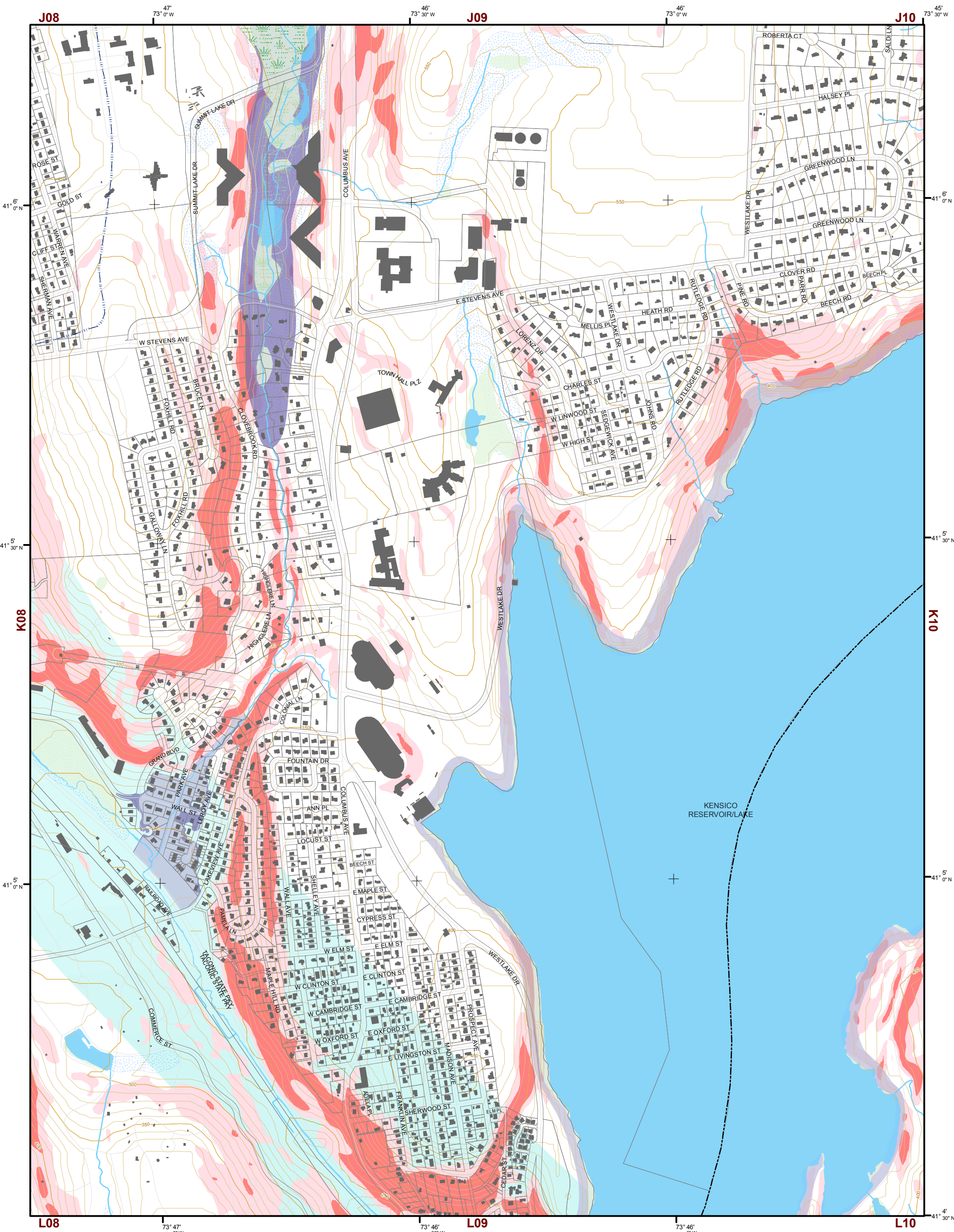
- NYSDEC Wetlands Greater than 12.4 acres
- NYSDEC Wetlands Less than 12.4 acres
- Floodplains 100
- Floodplains 500

H05	H06	H07	H08	H09	H10	H11
I05	I06	I07	I08	I09	I10	I11
J06	J07	J08	J09	J10	J11	
K05	K06	K07	K08	K09	K10	K11
L05	L06	L07	L08	L09	L10	L11

This map is for general information only and should not be used for site specific planning. Data was collected from a wide range of local, state, and federal GIS databases "as is." Westchester County assumes no liability to any party for any loss or damage caused by errors or omissions resulting from negligence, accident or any other cause.



Westchester County
 Andrew J. Span, Westchester County Executive
 County Board of Legislators

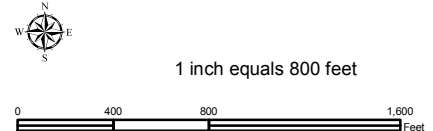
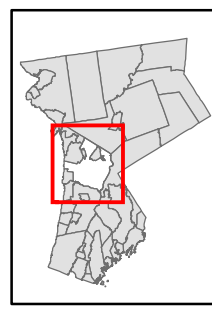


Natural Resource Inventory

Town of Mt. Pleasant

Map # K09

TILE INDEX



Legend

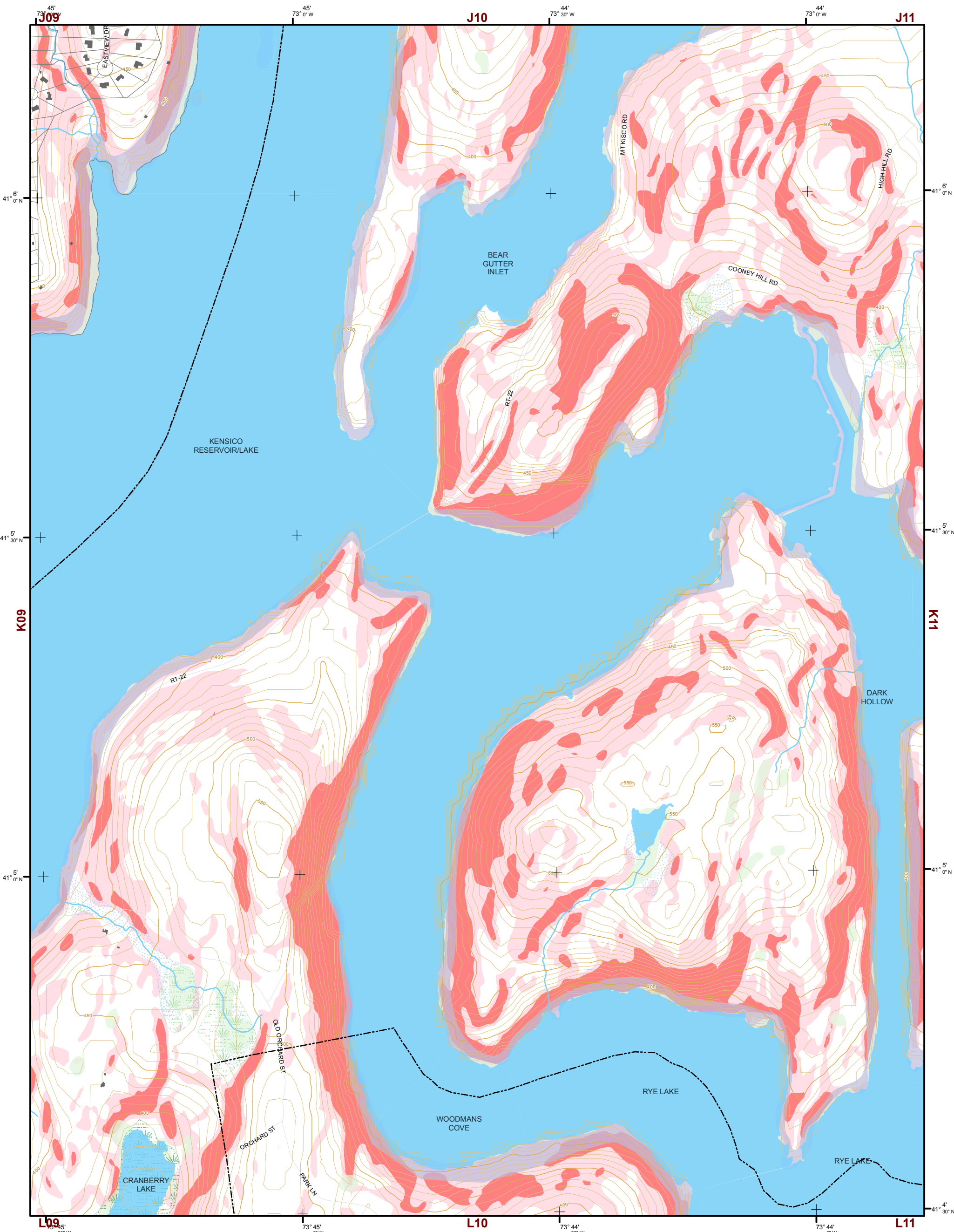
- 10' TOPO
- 50' TOPO
- Streams
- Lakes, Ponds or Reservoirs
- Aquifer
- Drainage Divides
- Hydric Soils
- Municipal Boundaries
- Tax Parcels
- Buildings
- Slope**
- 15% - 25%
- 25% and Over
- NYSDEC Wetlands**
- Greater than 12.4 acres
- Less than 12.4 acres
- Floodplains**
- 100
- 500
- National Wetlands Inventory

H05	H06	H07	H08	H09	H10	H11
I05	I06	I07	I08	I09	I10	I11
J06	J07	J08	J09	J10	J11	
K05	K06	K07	K08	K09	K10	K11
L05	L06	L07	L08	L09	L10	L11

This map is for general information only and should not be used for site specific planning. Data was collected from a wide range of local, state, and federal GIS databases "as is." Westchester County assumes no liability to any party for any loss or damage caused by errors or omissions resulting from negligence, accident or any other cause.



Westchester County Board of Legislators
Andrew J. Span, Westchester County Executive

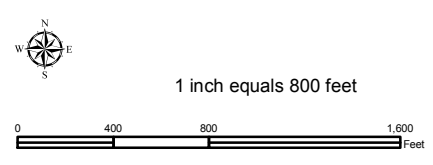
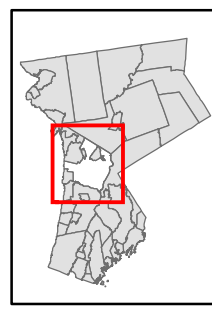


Natural Resource Inventory

Town of Mt. Pleasant

Map # K10

TILE INDEX



Legend

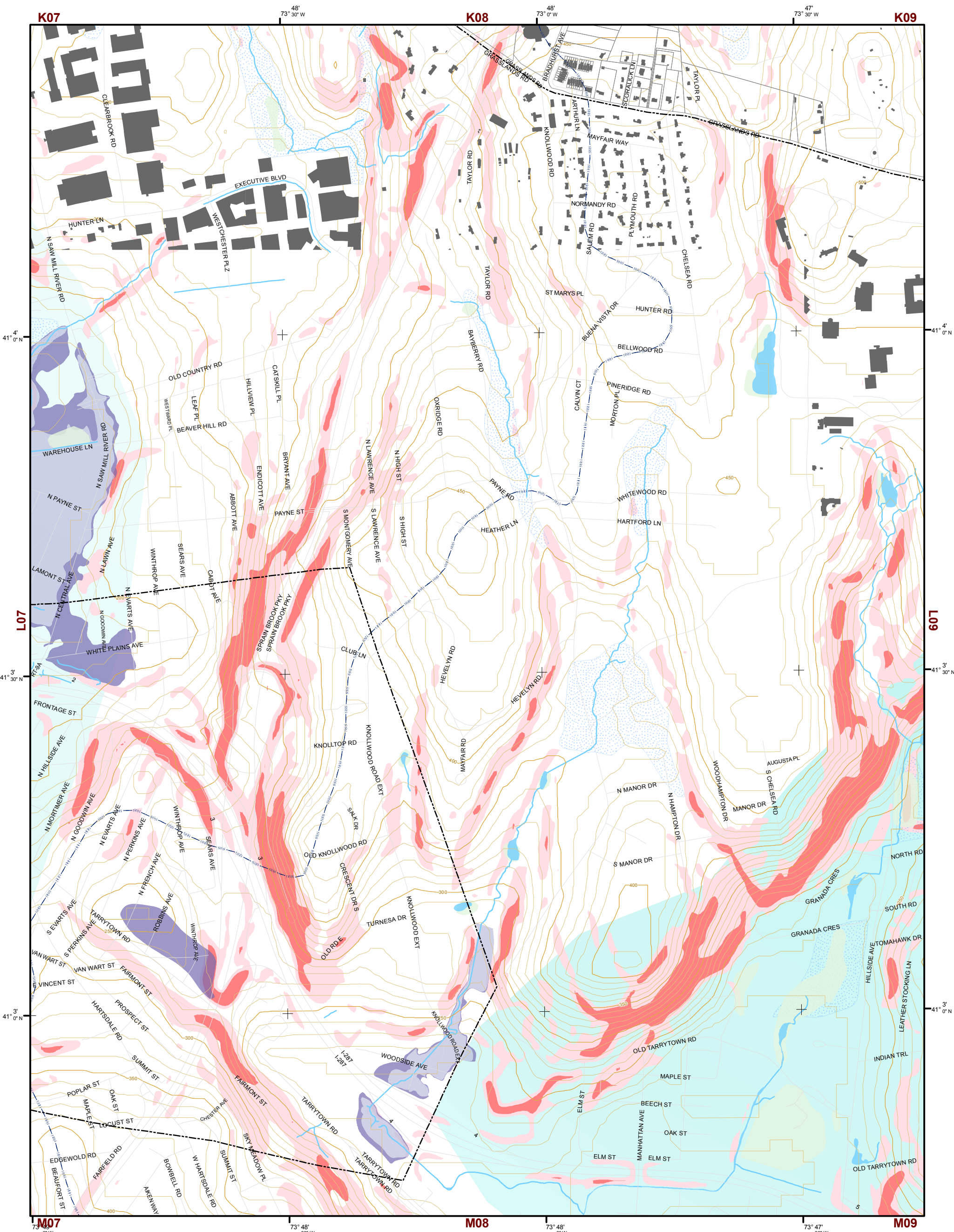
- 10' TOPO
- 50' TOPO
- Streams
- Lakes, Ponds or Reservoirs
- Aquifer
- Drainage Divides
- Hydric Soils
- Municipal Boundaries
- Tax Parcels
- Buildings
- Slope 15% - 25%
- Slope 25% and Over
- National Wetlands Inventory
- NYSDEC Wetlands Greater than 12.4 acres
- NYSDEC Wetlands Less than 12.4 acres
- Floodplains 100
- Floodplains 500

H05	H06	H07	H08	H09	H10	H11
I05	I06	I07	I08	I09	I10	I11
J06	J07	J08	J09	J10	J11	
K05	K06	K07	K08	K09	K10	K11
L05	L06	L07	L08	L09	L10	L11

This map is for general information only and should not be used for site specific planning. Data was collected from a wide range of local, state, and federal GIS databases "as is." Westchester County assumes no liability to any party for any loss or damage caused by errors or omissions resulting from negligence, accident or any other cause.



Westchester County Board of Legislators
Andrew J. Span, Westchester County Executive

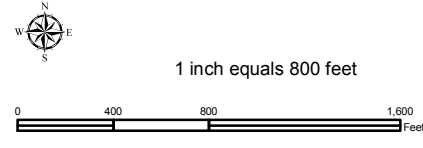
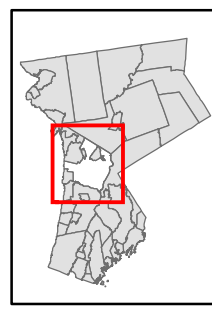


Natural Resource Inventory

Town of Mt. Pleasant

Map # L08

TILE INDEX



Legend

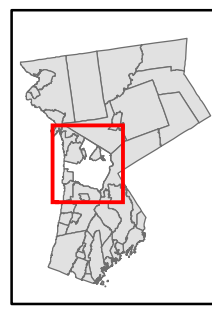
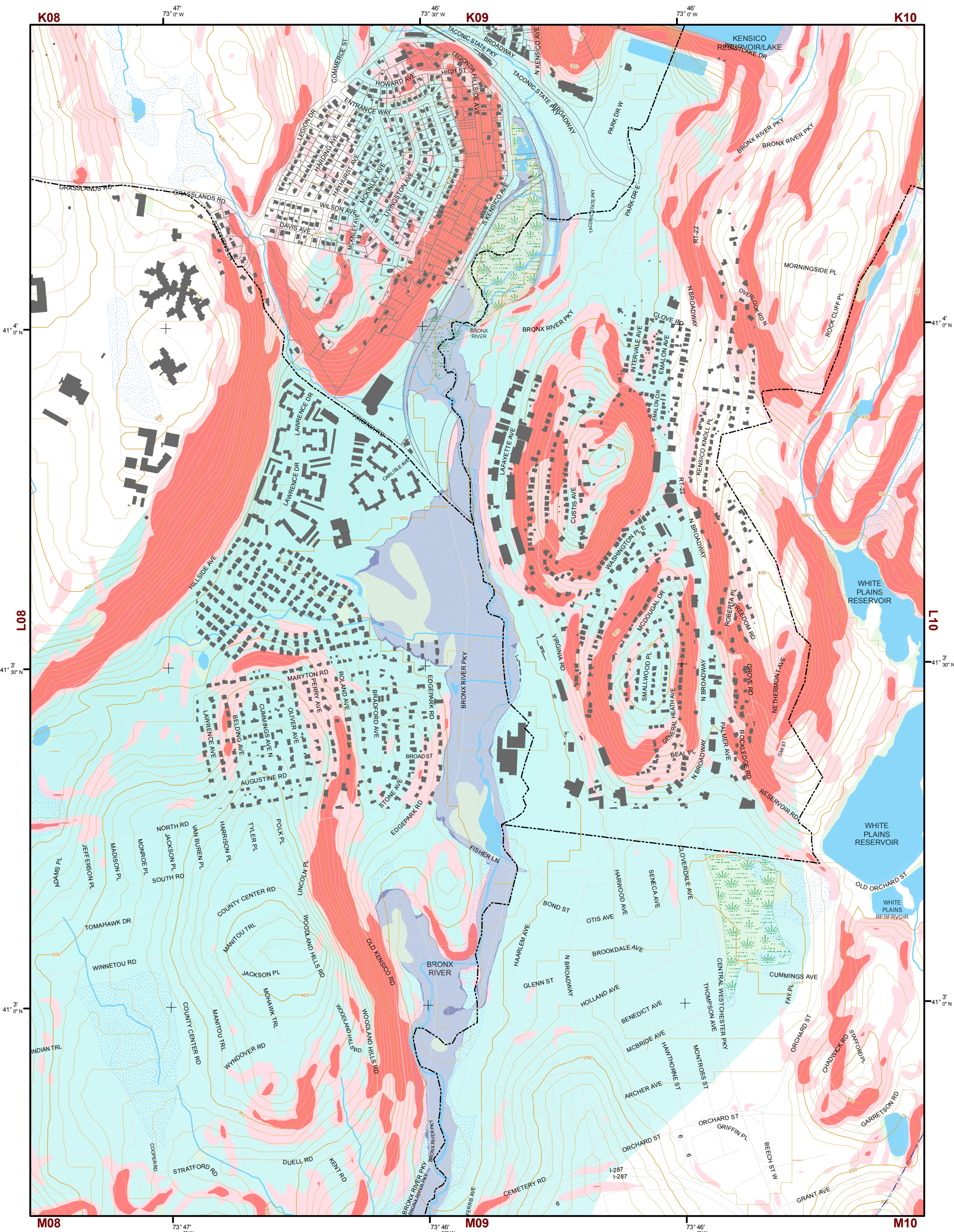
- 10' TOPO
- 50' TOPO
- Streams
- Lakes, Ponds or Reservoirs
- Aquifer
- Drainage Divides
- Hydric Soils
- Municipal Boundaries
- Tax Parcels
- Buildings
- Slope 15% - 25%
- Slope 25% and Over
- National Wetlands Inventory
- NYSDEC Wetlands Greater than 12.4 acres
- NYSDEC Wetlands Less than 12.4 acres
- Floodplains 100
- Floodplains 500

H05	H06	H07	H08	H09	H10	H11
I05	I06	I07	I08	I09	I10	I11
J06	J07	J08	J09	J10	J11	
K05	K06	K07	K08	K09	K10	K11
L05	L06	L07	L08	L09	L10	L11

This map is for general information only and should not be used for site specific planning. Data was collected from a wide range of local, state, and federal GIS databases "as is." Westchester County assumes no liability to any party for any loss or damage caused by errors or omissions resulting from negligence, accident or any other cause.



Westchester County
 Andrew J. Span, Westchester County Executive
 County Board of Legislators

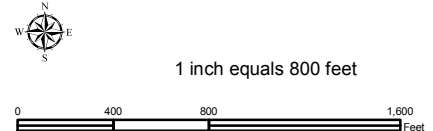


Natural Resource Inventory

Town of Mt. Pleasant

Map # L09

TILE INDEX



Legend

- 10' TOPO
- 50' TOPO
- Streams
- Lakes, Ponds or Reservoirs
- Aquifer
- Drainage Divides
- Hydric Soils
- Municipal Boundaries
- Tax Parcels
- Buildings
- Slope 15% - 25%
- Slope 25% and Over
- National Wetlands Inventory
- NYSDEC Wetlands Greater than 12.4 acres
- NYSDEC Wetlands Less than 12.4 acres
- Floodplains 100
- Floodplains 500

H05	H06	H07	H08	H09	H10	H11
I05	I06	I07	I08	I09	I10	I11
J06	J07	J08	J09	J10	J11	
K05	K06	K07	K08	K09	K10	K11
L05	L06	L07	L08	L09	L10	L11

This map is for general information only and should not be used for site specific planning. Data was collected from a wide range of local, state, and federal GIS databases "as is." Westchester County assumes no liability to any party for any loss or damage caused by errors or omissions resulting from negligence, accident or any other cause.



Westchester County Board of Legislators
 Andrew J. Span, Westchester County Executive