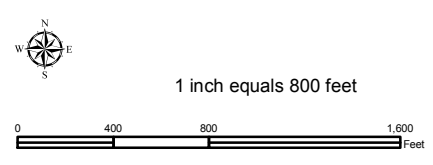
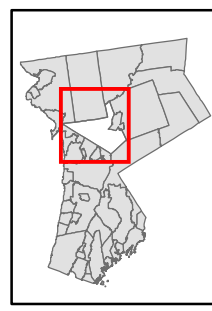


Natural Resource Inventory

Town of New Castle

Map # F09

TILE INDEX



Legend

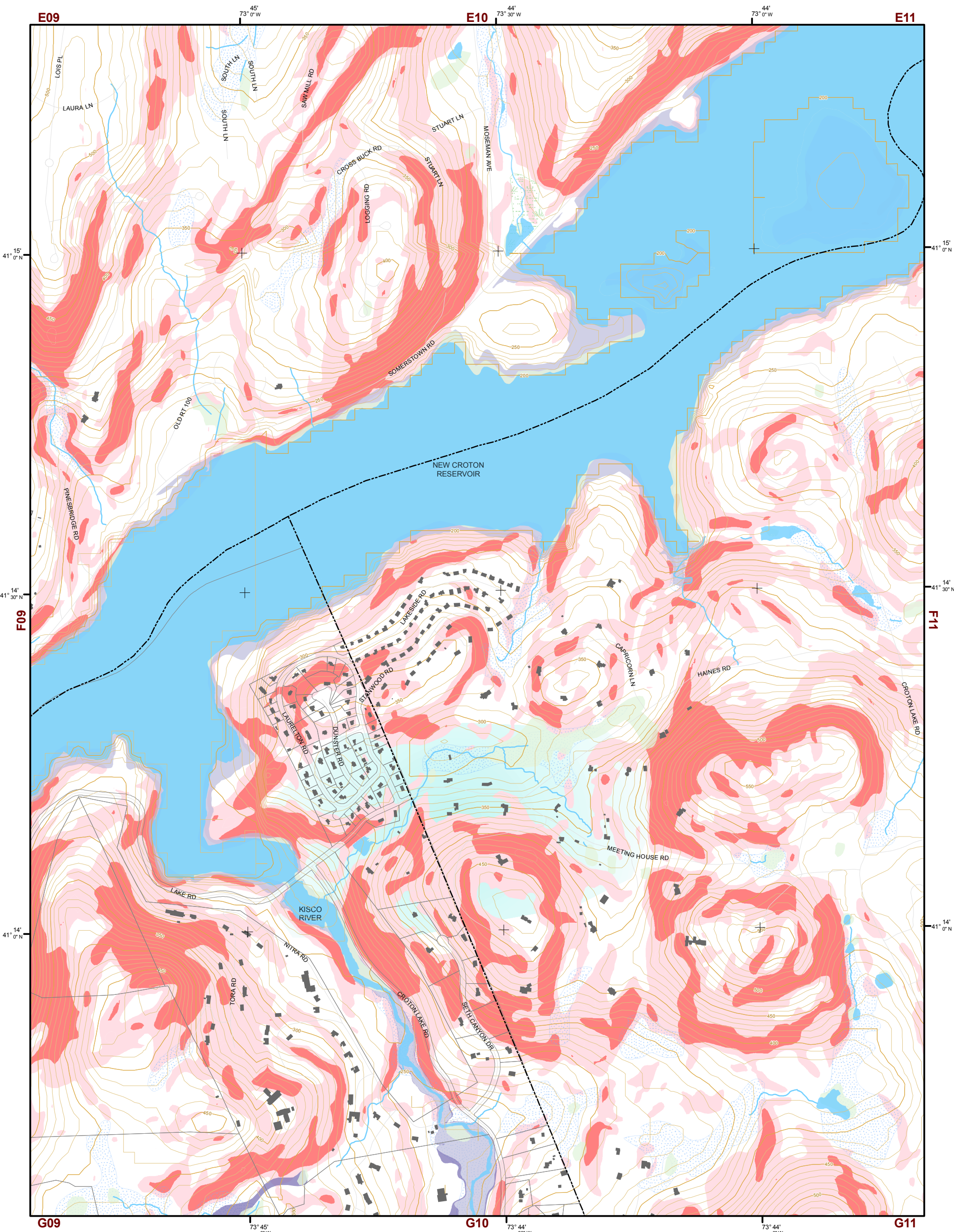
- 10' TOPO
- 50' TOPO
- Streams
- Lakes, Ponds or Reservoirs
- Aquifer
- Drainage Divides
- Hydric Soils
- Municipal Boundaries
- Tax Parcels
- Buildings
- Slope**
 - 15% - 25%
 - 25% and Over
- NYSDEC Wetlands**
 - Greater than 12.4 acres
 - Less than 12.4 acres
- Floodplains**
 - 100
 - 500
- National Wetlands Inventory

| | | | | | |
|-----|-----|-----|-----|-----|-----|
| E06 | E07 | E08 | E09 | E10 | E11 |
| F06 | F07 | F08 | F09 | F10 | F11 |
| G06 | G07 | G08 | G09 | G10 | G11 |
| H06 | H07 | H08 | H09 | H10 | H11 |
| I06 | I07 | I08 | I09 | I10 | I11 |
| J06 | J07 | J08 | J09 | J10 | J11 |

This map is for general information only and should not be used for site specific planning. Data was collected from a wide range of local, state, and federal GIS databases "as is." Westchester County assumes no liability to any party for any loss or damage caused by errors or omissions resulting from negligence, accident or any other cause.



Westchester County Board of Legislators
 Andrew J. Span, Westchester County Executive

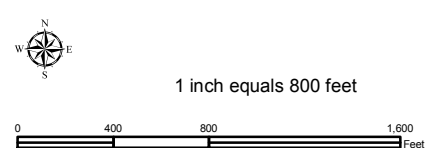
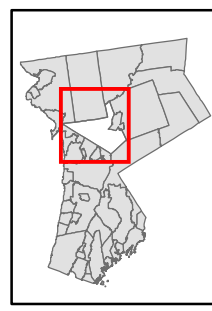


Natural Resource Inventory

Town of New Castle

Map # F10

TILE INDEX



Legend

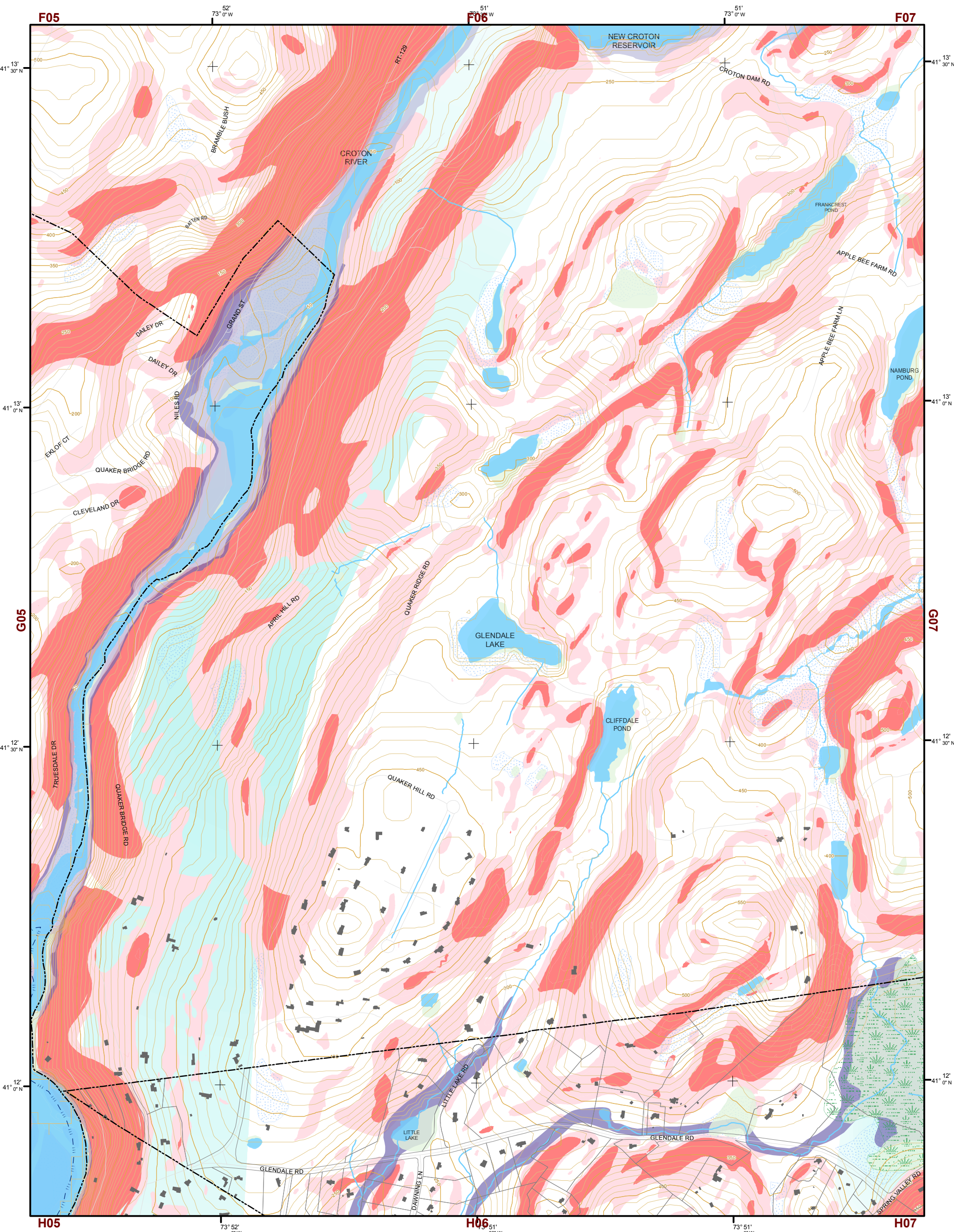
- 10' TOPO
- 50' TOPO
- Streams
- Lakes, Ponds or Reservoirs
- Aquifer
- Drainage Divides
- Hydric Soils
- Municipal Boundaries
- Tax Parcels
- Buildings
- Slope**
 - 15% - 25%
 - 25% and Over
- NYSDEC Wetlands**
 - Greater than 12.4 acres
 - Less than 12.4 acres
- Floodplains**
 - 100
 - 500
- National Wetlands Inventory

| | | | | | |
|-----|-----|-----|-----|-----|-----|
| E06 | E07 | E08 | E09 | E10 | E11 |
| F06 | F07 | F08 | F09 | F10 | F11 |
| G06 | G07 | G08 | G09 | G10 | G11 |
| H06 | H07 | H08 | H09 | H10 | H11 |
| I06 | I07 | I08 | I09 | I10 | I11 |
| J06 | J07 | J08 | J09 | J10 | J11 |

This map is for general information only and should not be used for site specific planning. Data was collected from a wide range of local, state, and federal GIS databases "as is." Westchester County assumes no liability to any party for any loss or damage caused by errors or omissions resulting from negligence, accident or any other cause.



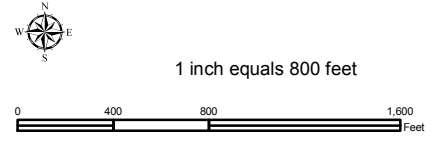
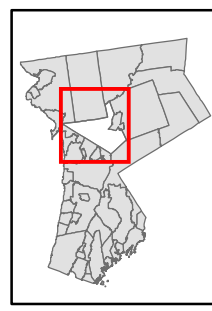
Westchester County Board of Legislators
 Andrew J. Span, Westchester County Executive



Natural Resource Inventory

Town of New Castle

Map # **G06**



Legend

- 10' TOPO
- 50' TOPO
- Streams
- Lakes, Ponds or Reservoirs
- Aquifer
- Drainage Divides
- Hydric Soils
- Municipal Boundaries
- Tax Parcels
- Buildings
- Slope**
- 15% - 25%
- 25% and Over
- NYSDEC Wetlands**
- Greater than 12.4 acres
- Less than 12.4 acres
- Floodplains**
- 100
- 500
- National Wetlands Inventory

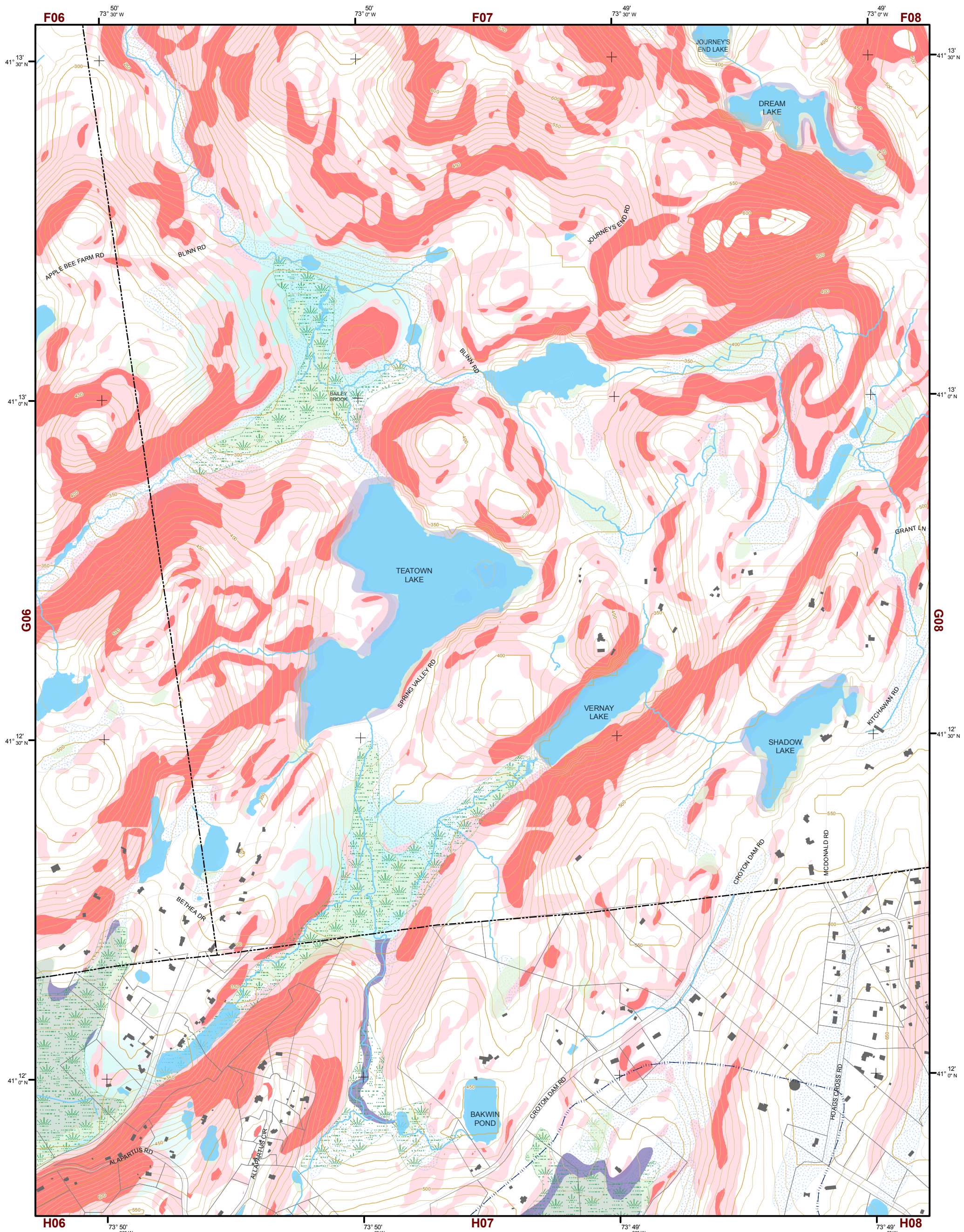
TILE INDEX

| | | | | | |
|------------|-----|-----|-----|-----|-----|
| E06 | E07 | E08 | E09 | E10 | E11 |
| F06 | F07 | F08 | F09 | F10 | F11 |
| G06 | G07 | G08 | G09 | G10 | G11 |
| H06 | H07 | H08 | H09 | H10 | H11 |
| I06 | I07 | I08 | I09 | I10 | I11 |
| J06 | J07 | J08 | J09 | J10 | J11 |

This map is for general information only and should not be used for site specific planning. Data was collected from a wide range of local, state, and federal GIS databases "as is." Westchester County assumes no liability to any party for any loss or damage caused by errors or omissions resulting from negligence, accident or any other cause.



Westchester County Board of Legislators
 Andrew J. Span, Westchester County Executive

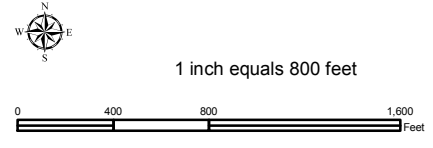
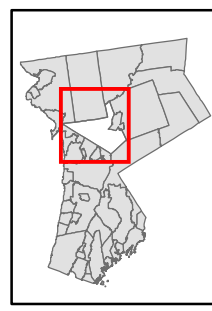


Natural Resource Inventory

Town of New Castle

Map # G07

TILE INDEX



Legend

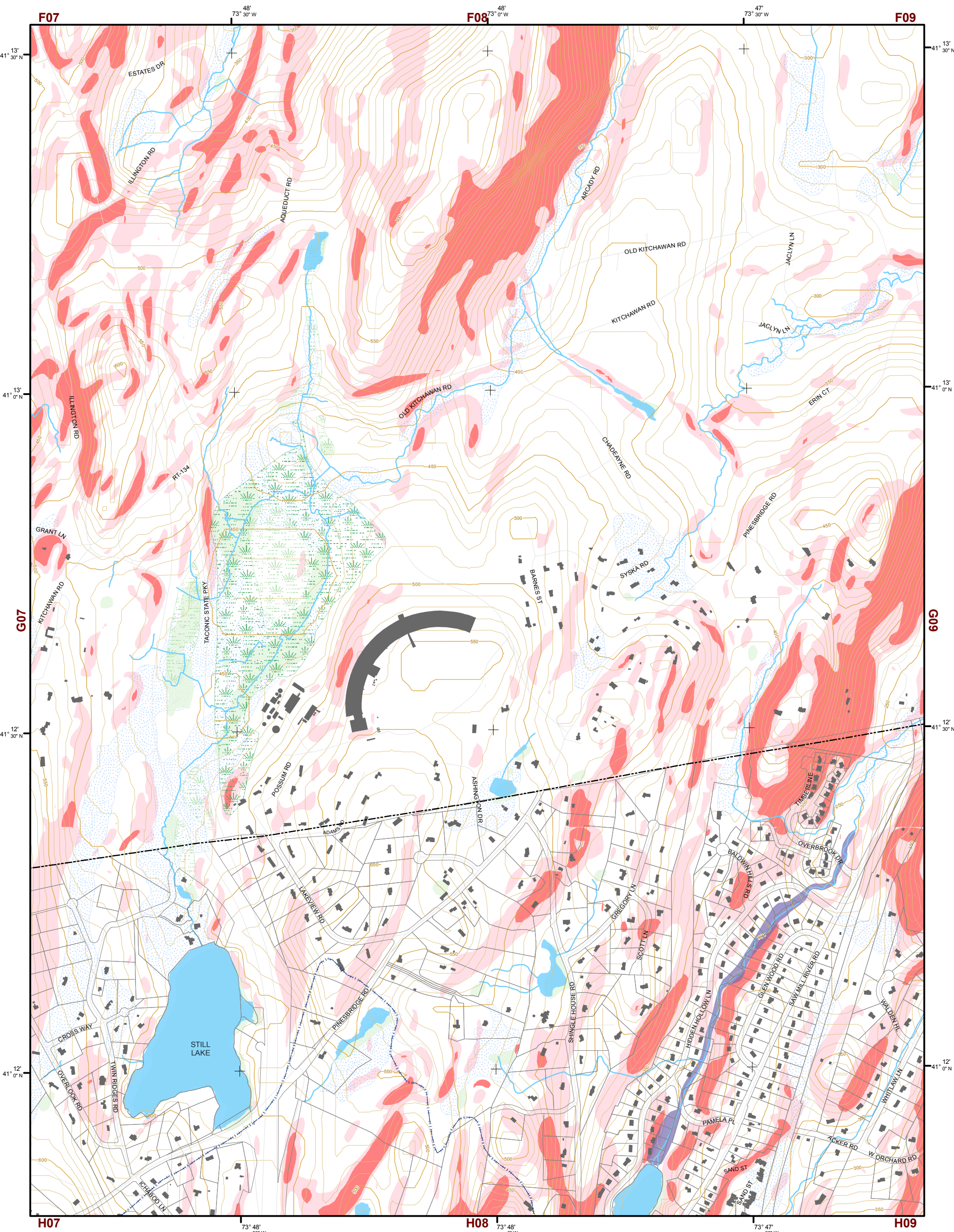
- 10' TOPO
- 50' TOPO
- Streams
- Lakes, Ponds or Reservoirs
- Aquifer
- Drainage Divides
- Hydric Soils
- Municipal Boundaries
- Tax Parcels
- Buildings
- Slope**
- 15% - 25%
- 25% and Over
- NYSDEC Wetlands**
- Greater than 12.4 acres
- Less than 12.4 acres
- Floodplains**
- 100
- 500
- National Wetlands Inventory

| E06 | E07 | E08 | E09 | E10 | E11 |
|-----|-----|-----|-----|-----|-----|
| F06 | F07 | F08 | F09 | F10 | F11 |
| G06 | G07 | G08 | G09 | G10 | G11 |
| H06 | H07 | H08 | H09 | H10 | H11 |
| I06 | I07 | I08 | I09 | I10 | I11 |
| J06 | J07 | J08 | J09 | J10 | J11 |

This map is for general information only and should not be used for site specific planning. Data was collected from a wide range of local, state, and federal GIS databases "as is." Westchester County assumes no liability to any party for any loss or damage caused by errors or omissions resulting from negligence, accident or any other cause.



Westchester County Board of Legislators
Andrew J. Span, Westchester County Executive



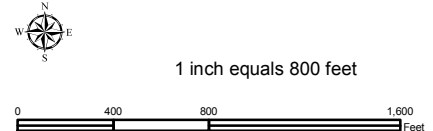
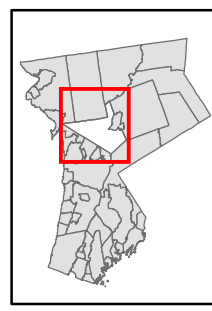
Natural Resource Inventory

Town of New Castle

Map # G08

TILE INDEX

| | | | | | |
|-----|-----|-----|-----|-----|-----|
| E06 | E07 | E08 | E09 | E10 | E11 |
| F06 | F07 | F08 | F09 | F10 | F11 |
| G06 | G07 | G08 | G09 | G10 | G11 |
| H06 | H07 | H08 | H09 | H10 | H11 |
| I06 | I07 | I08 | I09 | I10 | I11 |
| J06 | J07 | J08 | J09 | J10 | J11 |



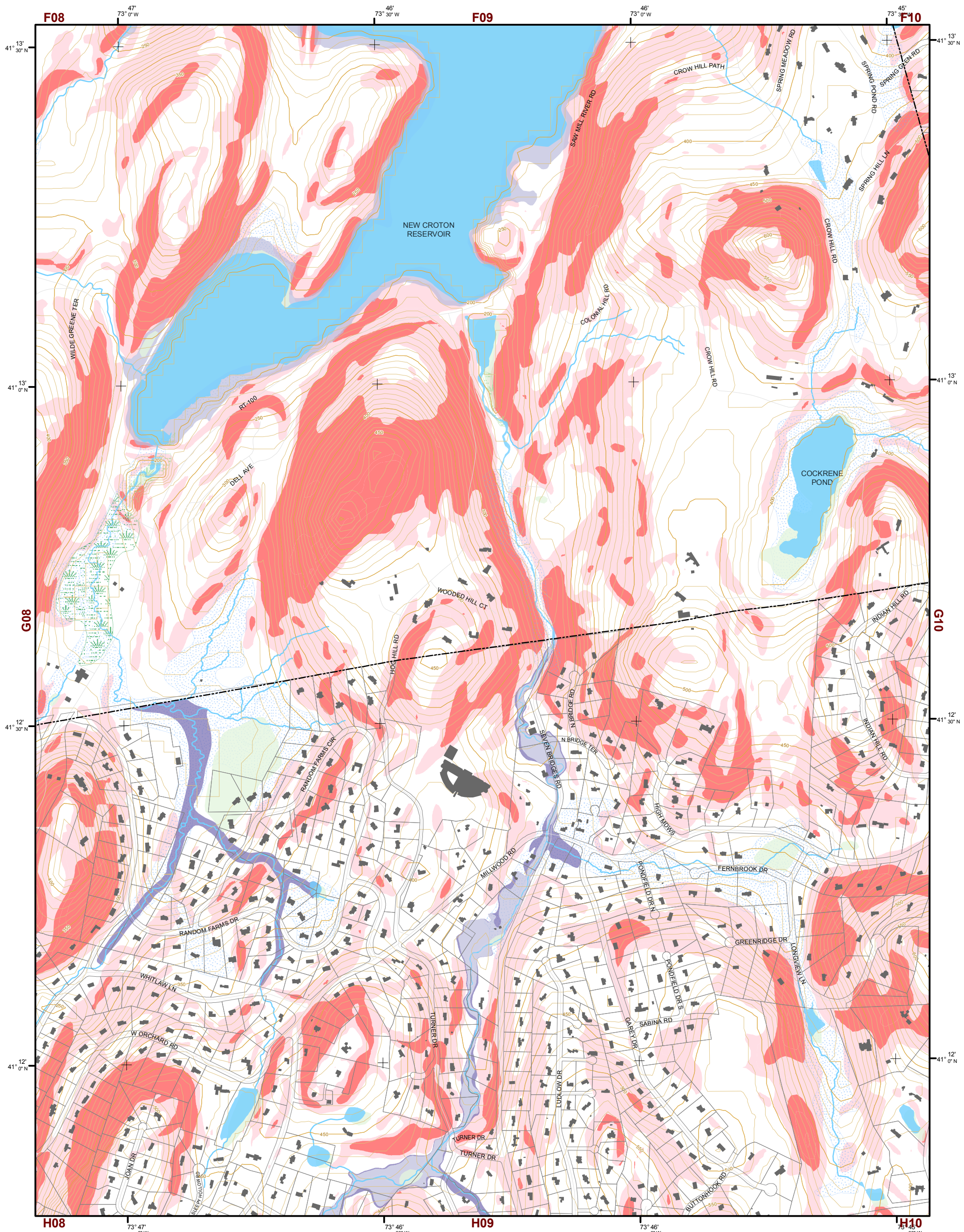
Legend

- 10' TOPO
- 50' TOPO
- Streams
- Lakes, Ponds or Reservoirs
- Aquifer
- Drainage Divides
- Hydric Soils
- Municipal Boundaries
- Tax Parcels
- Buildings
- Slope**
- 15% - 25%
- 25% and Over
- National Wetlands Inventory
- NYSDEC Wetlands
Greater than 12.4 acres
- NYSDEC Wetlands
Less than 12.4 acres
- Floodplains**
- 100
- 500

This map is for general information only and should not be used for site specific planning. Data was collected from a wide range of local, state, and federal GIS databases "as is." Westchester County assumes no liability to any party for any loss or damage caused by errors or omissions resulting from negligence, accident or any other cause.

GIS GEOGRAPHIC INFORMATION SYSTEMS

Westchester County Board of Legislators
Andrew J. Span, Westchester County Executive

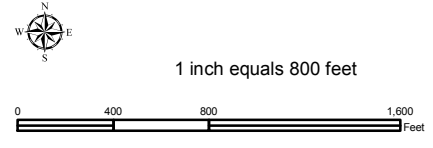
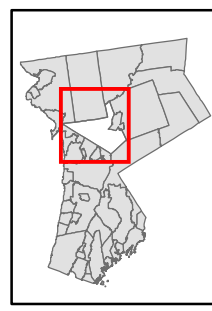


Natural Resource Inventory

Town of New Castle

Map # G09

TILE INDEX



Legend

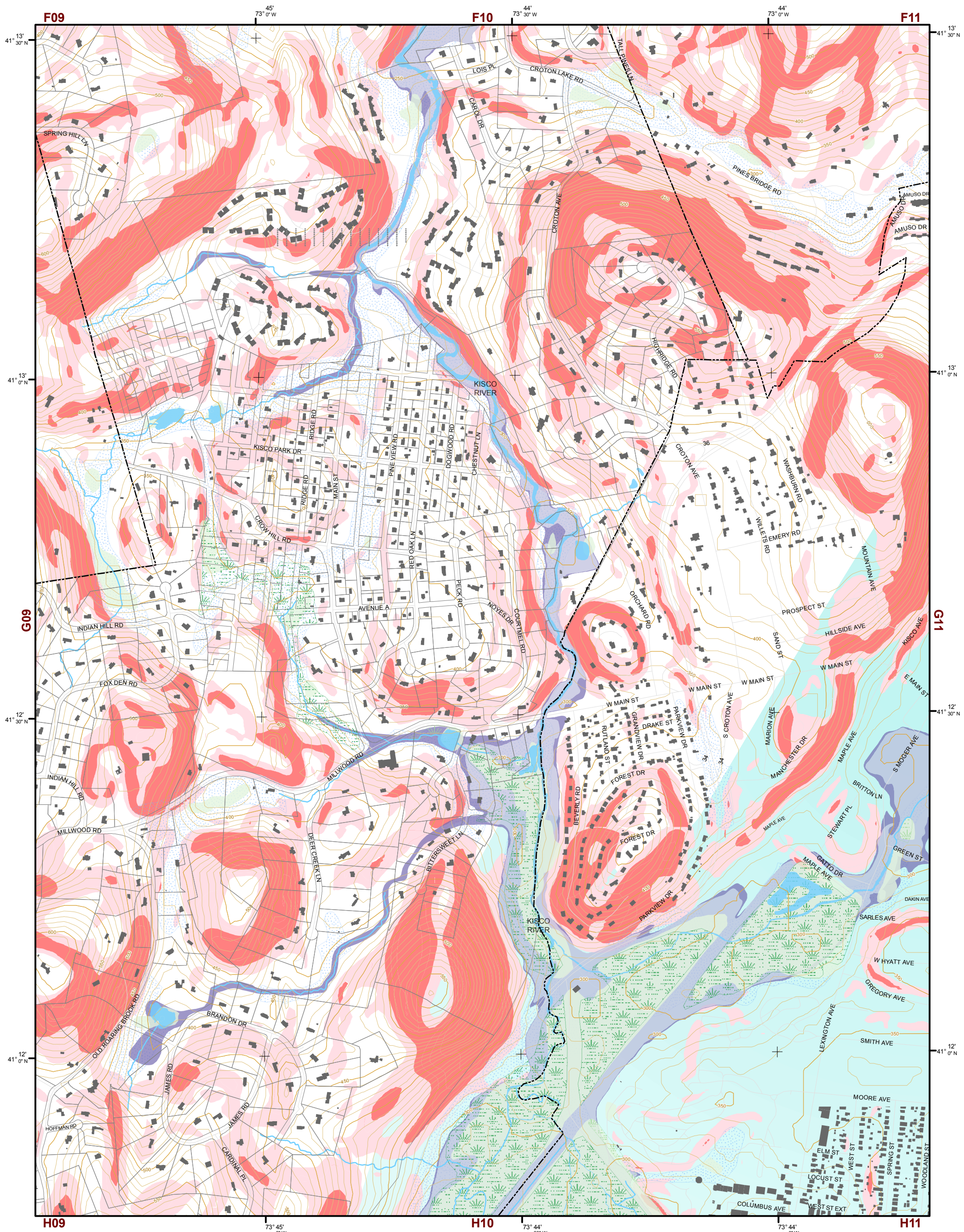
- 10' TOPO
- 50' TOPO
- Streams
- Lakes, Ponds or Reservoirs
- Aquifer
- Drainage Divides
- Hydric Soils
- Municipal Boundaries
- Tax Parcels
- Buildings
- Slope**
 - 15% - 25%
 - 25% and Over
- NYSDEC Wetlands**
 - Greater than 12.4 acres
 - Less than 12.4 acres
- Floodplains**
 - 100
 - 500
- National Wetlands Inventory

| | | | | | |
|-----|-----|-----|-----|-----|-----|
| E06 | E07 | E08 | E09 | E10 | E11 |
| F06 | F07 | F08 | F09 | F10 | F11 |
| G06 | G07 | G08 | G09 | G10 | G11 |
| H06 | H07 | H08 | H09 | H10 | H11 |
| I06 | I07 | I08 | I09 | I10 | I11 |
| J06 | J07 | J08 | J09 | J10 | J11 |

This map is for general information only and should not be used for site specific planning. Data was collected from a wide range of local, state, and federal GIS databases "as is." Westchester County assumes no liability to any party for any loss or damage caused by errors or omissions resulting from negligence, accident or any other cause.



Westchester County Board of Legislators
 Andrew J. Span, Westchester County Executive

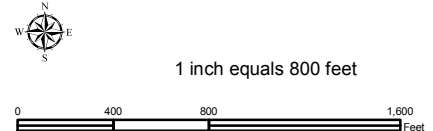
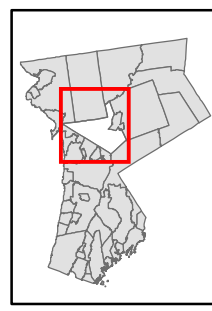


Natural Resource Inventory Map # G10

Town of New Castle

TILE INDEX

| | | | | | |
|-----|-----|-----|-----|-----|-----|
| E06 | E07 | E08 | E09 | E10 | E11 |
| F06 | F07 | F08 | F09 | F10 | F11 |
| G06 | G07 | G08 | G09 | G10 | G11 |
| H06 | H07 | H08 | H09 | H10 | H11 |
| I06 | I07 | I08 | I09 | I10 | I11 |
| J06 | J07 | J08 | J09 | J10 | J11 |

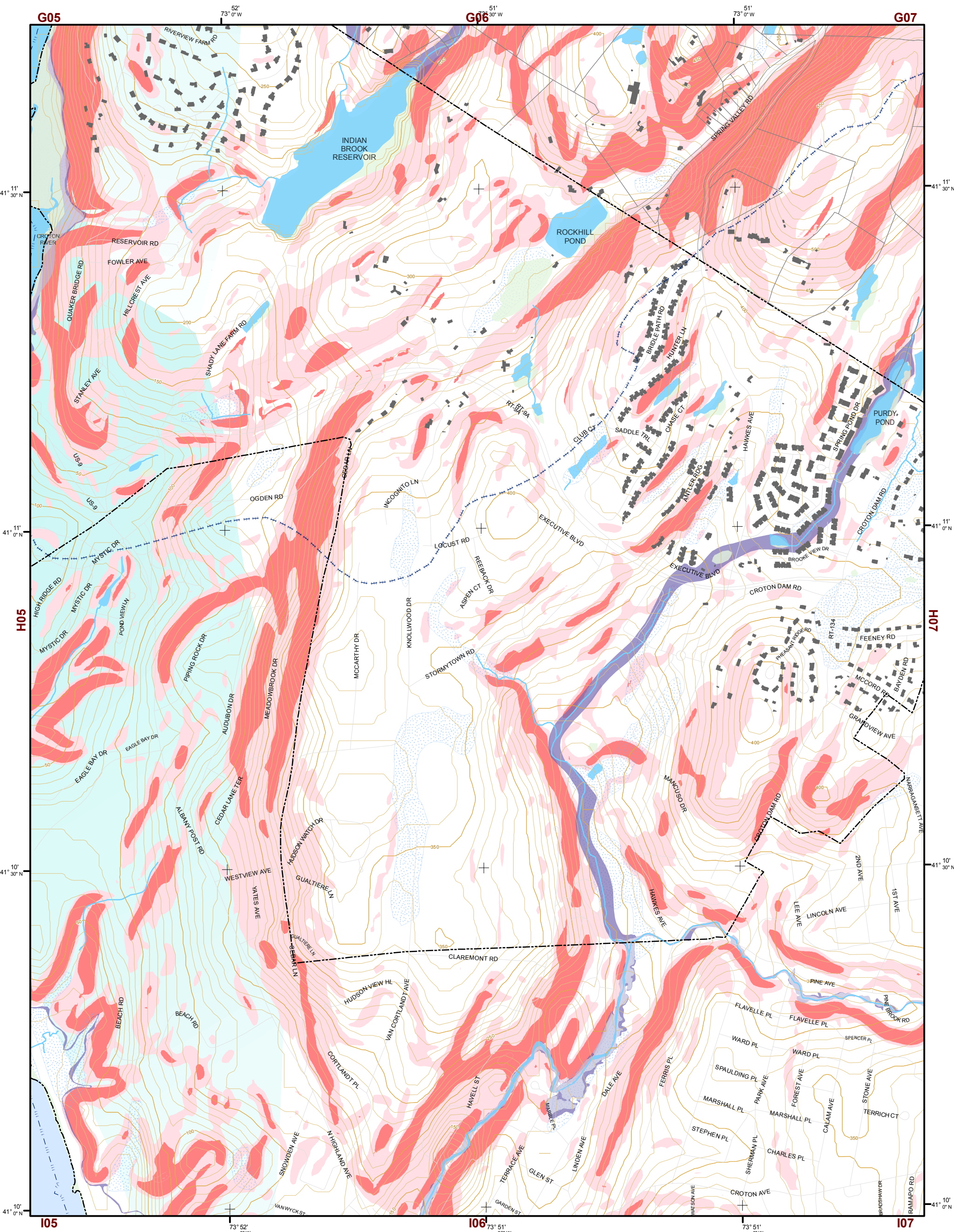


Legend

- 10' TOPO
- 50' TOPO
- Streams
- Lakes, Ponds or Reservoirs
- Aquifer
- Drainage Divides
- Hydric Soils
- Municipal Boundaries
- Tax Parcels
- Buildings
- Slope 15% - 25%
- Slope 25% and Over
- NYSDEC Wetlands Greater than 12.4 acres
- NYSDEC Wetlands Less than 12.4 acres
- Floodplains 100
- Floodplains 500
- National Wetlands Inventory

This map is for general information only and should not be used for site specific planning. Data was collected from a wide range of local, state, and federal GIS databases "as is." Westchester County assumes no liability to any party for any loss or damage caused by errors or omissions resulting from negligence, accident or any other cause.



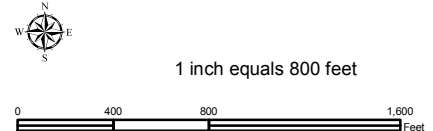
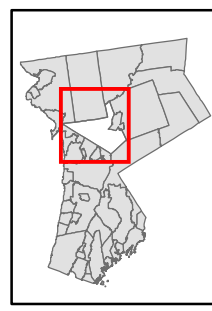


Natural Resource Inventory

Town of New Castle

Map # H06

TILE INDEX



Legend

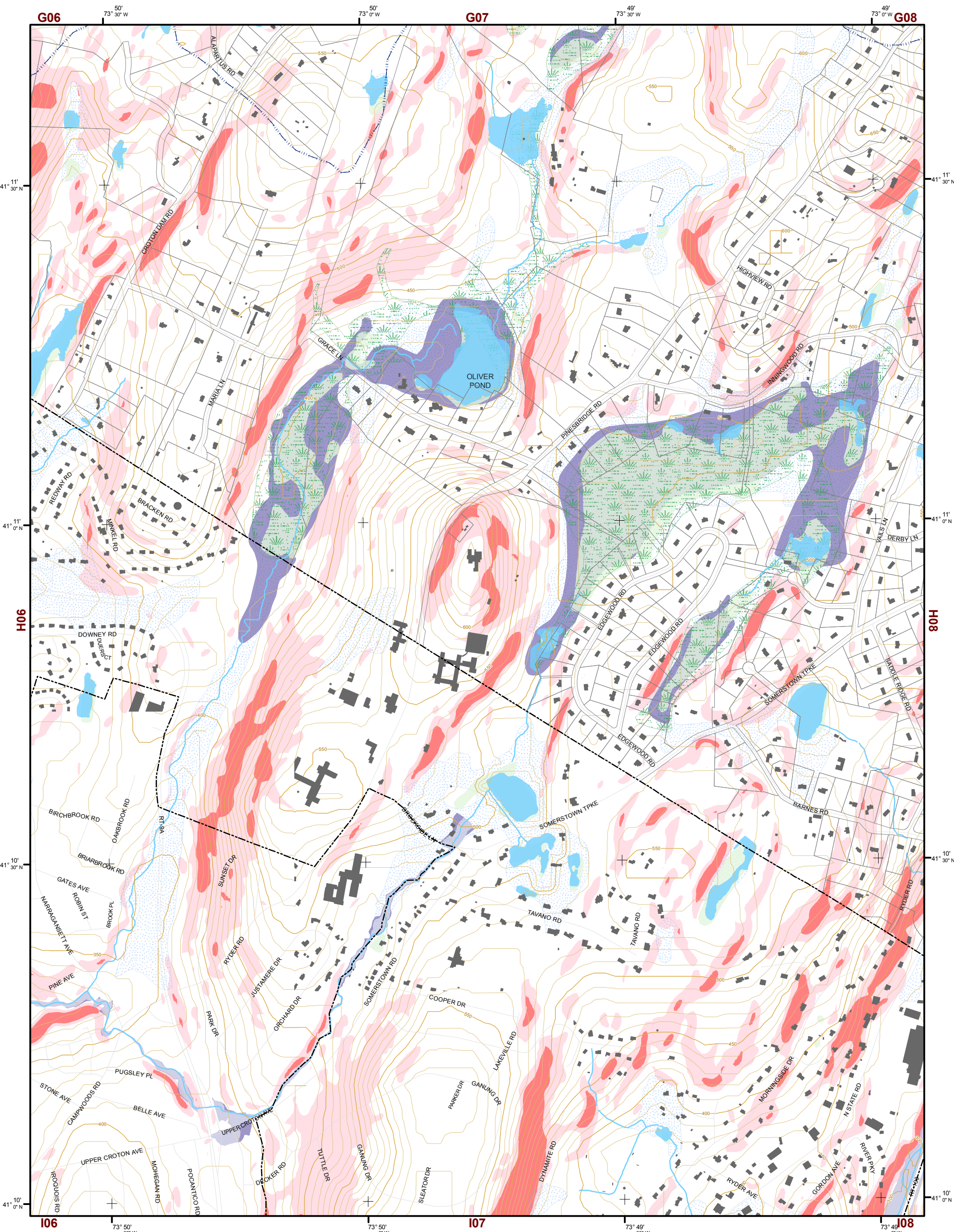
- 10' TOPO
- 50' TOPO
- Streams
- Lakes, Ponds or Reservoirs
- Aquifer
- Drainage Divides
- Hydric Soils
- Municipal Boundaries
- Tax Parcels
- Buildings
- Slope**
- 15% - 25%
- 25% and Over
- National Wetlands Inventory

- NYSDEC Wetlands**
- Greater than 12.4 acres
- Less than 12.4 acres
- Floodplains**
- 100
- 500

| | | | | | |
|-----|-----|-----|-----|-----|-----|
| E06 | E07 | E08 | E09 | E10 | E11 |
| F06 | F07 | F08 | F09 | F10 | F11 |
| G06 | G07 | G08 | G09 | G10 | G11 |
| H06 | H07 | H08 | H09 | H10 | H11 |
| I06 | I07 | I08 | I09 | I10 | I11 |
| J06 | J07 | J08 | J09 | J10 | J11 |

This map is for general information only and should not be used for site specific planning. Data was collected from a wide range of local, state, and federal GIS databases "as is." Westchester County assumes no liability to any party for any loss or damage caused by errors or omissions resulting from negligence, accident or any other cause.



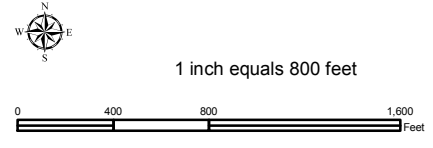
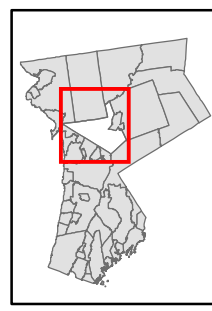


Natural Resource Inventory

Town of New Castle

Map # H07

TILE INDEX



Legend

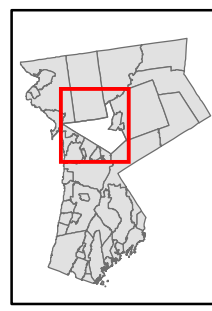
- 10' TOPO
- 50' TOPO
- Streams
- Lakes, Ponds or Reservoirs
- Aquifer
- Drainage Divides
- Hydric Soils
- Municipal Boundaries
- Tax Parcels
- Buildings
- Slope**
- 15% - 25%
- 25% and Over
- National Wetlands Inventory
- NYSDEC Wetlands**
- Greater than 12.4 acres
- Less than 12.4 acres
- Floodplains**
- 100
- 500

| | | | | | |
|-----|-----|-----|-----|-----|-----|
| E06 | E07 | E08 | E09 | E10 | E11 |
| F06 | F07 | F08 | F09 | F10 | F11 |
| G06 | G07 | G08 | G09 | G10 | G11 |
| H06 | H07 | H08 | H09 | H10 | H11 |
| I06 | I07 | I08 | I09 | I10 | I11 |
| J06 | J07 | J08 | J09 | J10 | J11 |

This map is for general information only and should not be used for site specific planning. Data was collected from a wide range of local, state, and federal GIS databases "as is." Westchester County assumes no liability to any party for any loss or damage caused by errors or omissions resulting from negligence, accident or any other cause.



Westchester County Board of Legislators
Andrew J. Span, Westchester County Executive

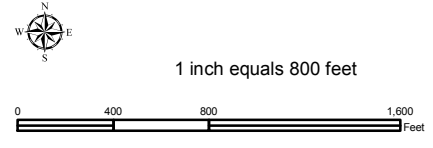


Natural Resource Inventory

Town of New Castle

Map # H08

TILE INDEX



Legend

- 10' TOPO
- 50' TOPO
- Streams
- Lakes, Ponds or Reservoirs
- Aquifer
- Drainage Divides
- Hydric Soils
- Municipal Boundaries
- Tax Parcels
- Buildings
- Slope**
- 15% - 25%
- 25% and Over
- National Wetlands Inventory

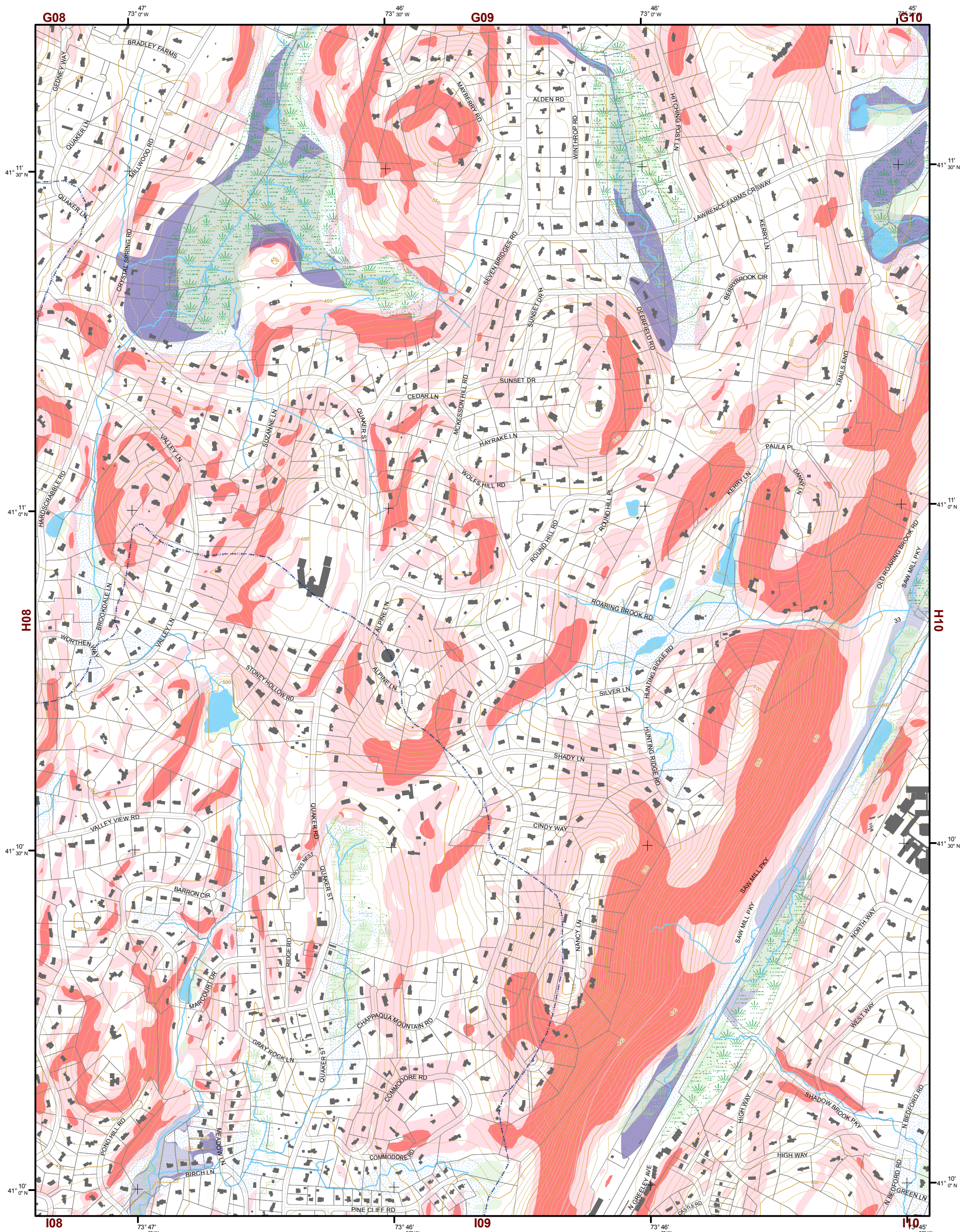
- NYSDEC Wetlands**
- Greater than 12.4 acres
- Less than 12.4 acres
- Floodplains**
- 100
- 500

| | | | | | |
|-----|-----|-----|-----|-----|-----|
| E06 | E07 | E08 | E09 | E10 | E11 |
| F06 | F07 | F08 | F09 | F10 | F11 |
| G06 | G07 | G08 | G09 | G10 | G11 |
| H06 | H07 | H08 | H09 | H10 | H11 |
| I06 | I07 | I08 | I09 | I10 | I11 |
| J06 | J07 | J08 | J09 | J10 | J11 |

This map is for general information only and should not be used for site specific planning. Data was collected from a wide range of local, state, and federal GIS databases "as is." Westchester County assumes no liability to any party for any loss or damage caused by errors or omissions resulting from negligence, accident or any other cause.



Westchester County Board of Legislators
Andrew J. Span, Westchester County Executive

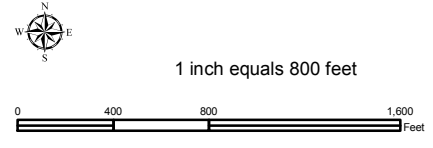
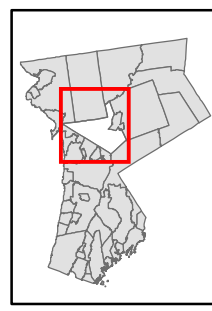


Natural Resource Inventory

Town of New Castle

Map # H09

TILE INDEX



Legend

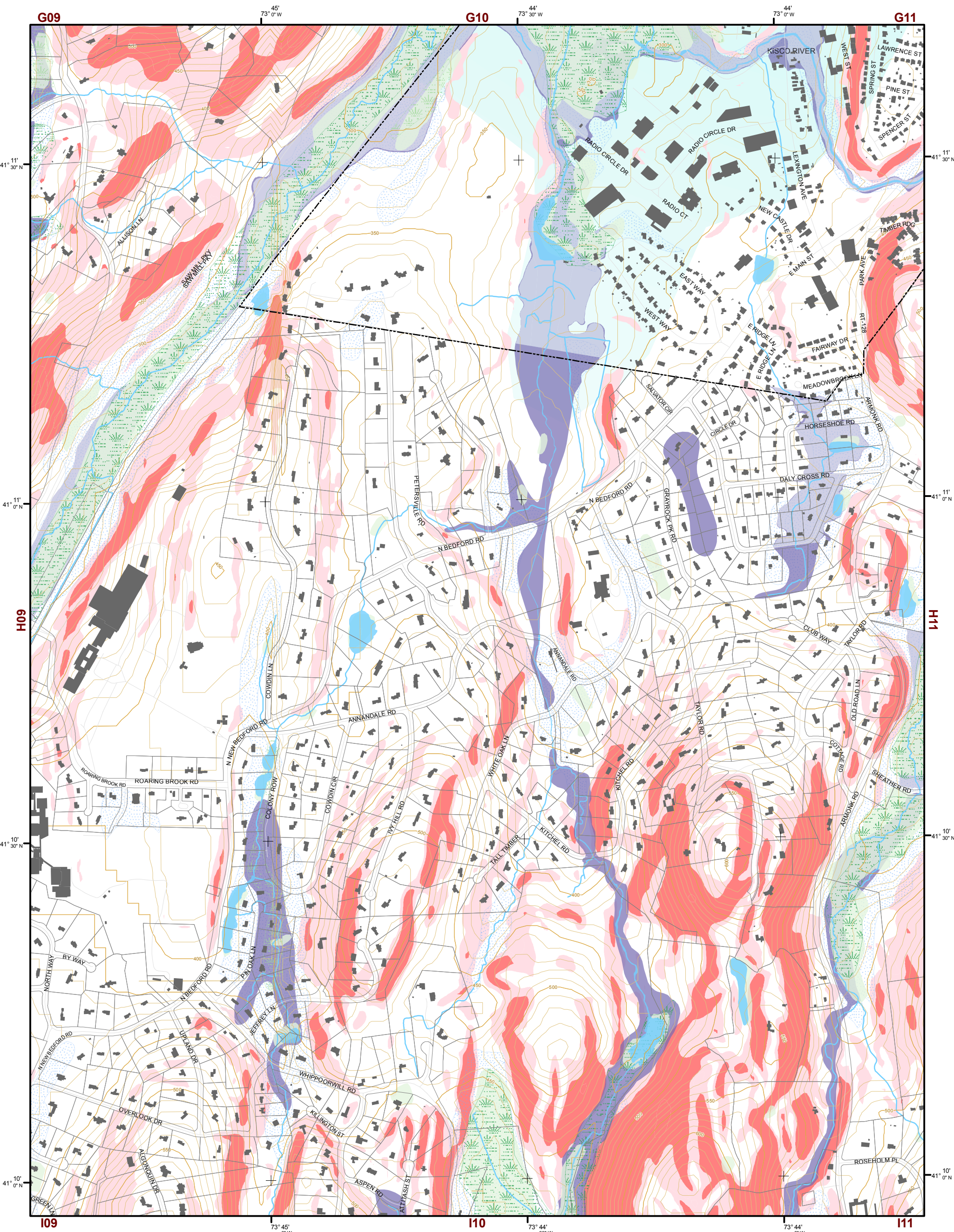
- 10' TOPO
- 50' TOPO
- Streams
- Lakes, Ponds or Reservoirs
- Aquifer
- Drainage Divides
- Hydric Soils
- Municipal Boundaries
- Tax Parcels
- Buildings
- Slope 15% - 25%
- Slope 25% and Over
- National Wetlands Inventory
- NYSDEC Wetlands Greater than 12.4 acres
- NYSDEC Wetlands Less than 12.4 acres
- Floodplains 100
- Floodplains 500

| | | | | | |
|-----|-----|-----|-----|-----|-----|
| E06 | E07 | E08 | E09 | E10 | E11 |
| F06 | F07 | F08 | F09 | F10 | F11 |
| G06 | G07 | G08 | G09 | G10 | G11 |
| H06 | H07 | H08 | H09 | H10 | H11 |
| I06 | I07 | I08 | I09 | I10 | I11 |
| J06 | J07 | J08 | J09 | J10 | J11 |

This map is for general information only and should not be used for site specific planning. Data was collected from a wide range of local, state, and federal GIS databases "as is." Westchester County assumes no liability to any party for any loss or damage caused by errors or omissions resulting from negligence, accident or any other cause.



Westchester County Board of Legislators
 Andrew J. Span, Westchester County Executive

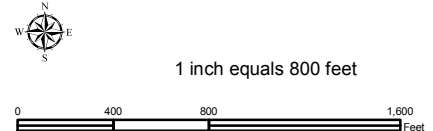
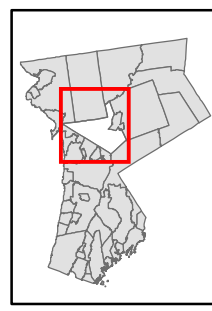


Natural Resource Inventory Map # H10

Town of New Castle

TILE INDEX

| | | | | | |
|-----|-----|-----|-----|-----|-----|
| E06 | E07 | E08 | E09 | E10 | E11 |
| F06 | F07 | F08 | F09 | F10 | F11 |
| G06 | G07 | G08 | G09 | G10 | G11 |
| H06 | H07 | H08 | H09 | H10 | H11 |
| I06 | I07 | I08 | I09 | I10 | I11 |
| J06 | J07 | J08 | J09 | J10 | J11 |

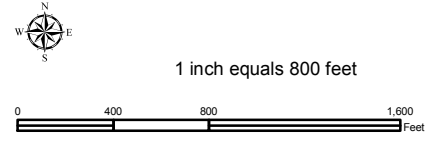
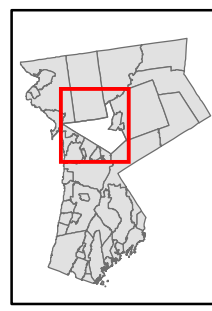
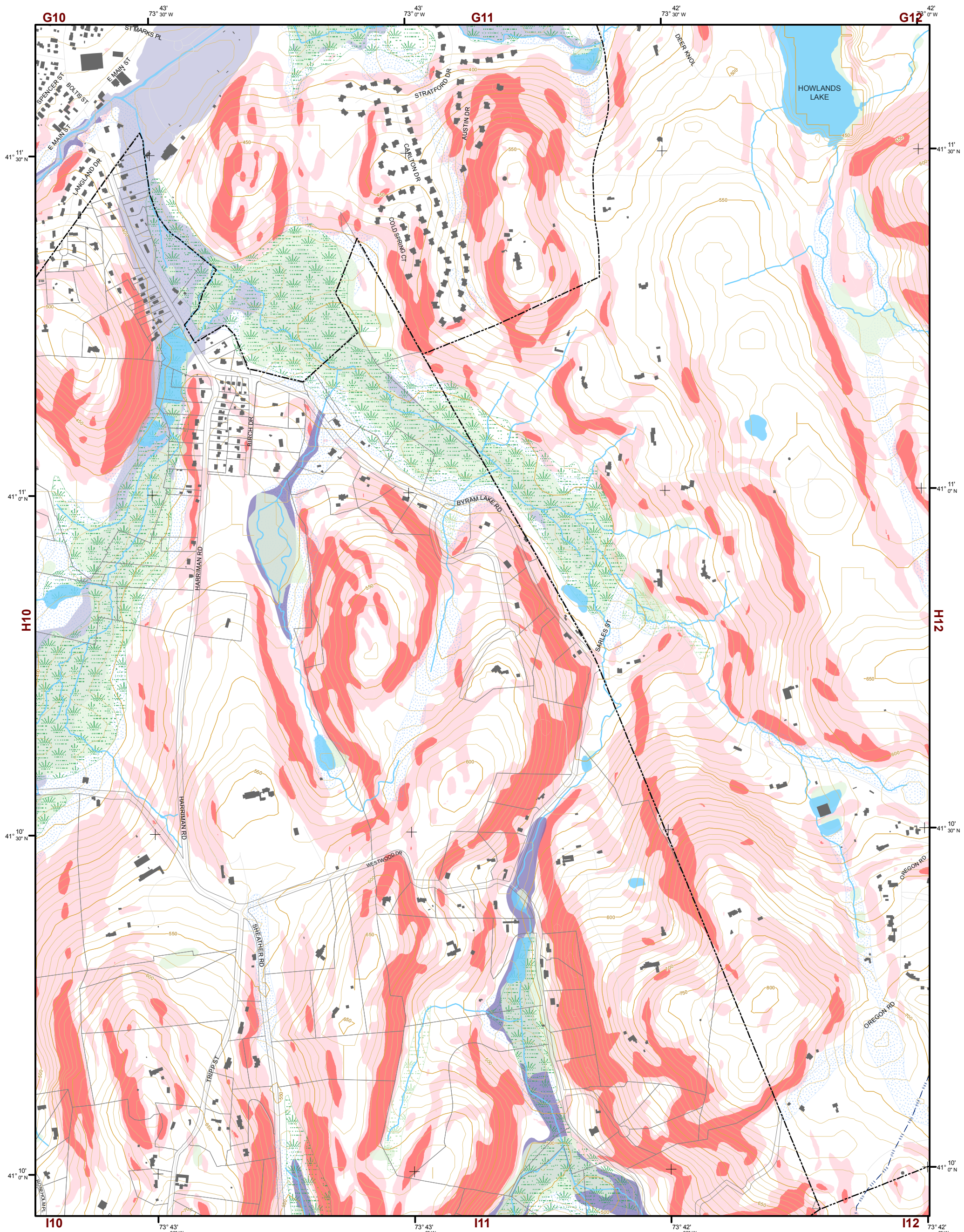


- Legend**
- 10' TOPO
 - 50' TOPO
 - Streams
 - Lakes, Ponds or Reservoirs
 - Aquifer
 - Drainage Divides
 - Hydric Soils
 - Municipal Boundaries
 - Tax Parcels
 - Buildings
 - Slope**
 - 15% - 25%
 - 25% and Over
 - NYSDEC Wetlands**
 - Greater than 12.4 acres
 - Less than 12.4 acres
 - Floodplains**
 - 100
 - 500
 - National Wetlands Inventory

This map is for general information only and should not be used for site specific planning. Data was collected from a wide range of local, state, and federal GIS databases "as is." Westchester County assumes no liability to any party for any loss or damage caused by errors or omissions resulting from negligence, accident or any other cause.

GIS GEOGRAPHIC INFORMATION SYSTEMS

Westchester County Board of Legislators
Andrew J. Spano, Westchester County Executive



Natural Resource Inventory

Town of New Castle

Map # H11

Legend

- 10' TOPO
- 50' TOPO
- Streams
- Lakes, Ponds or Reservoirs
- Aquifer
- Drainage Divides
- Hydric Soils
- Municipal Boundaries
- Tax Parcels
- Buildings
- Slope**
- 15% - 25%
- 25% and Over
- National Wetlands Inventory

- NYSDEC Wetlands**
- Greater than 12.4 acres
- Less than 12.4 acres
- Floodplains**
- 100
- 500

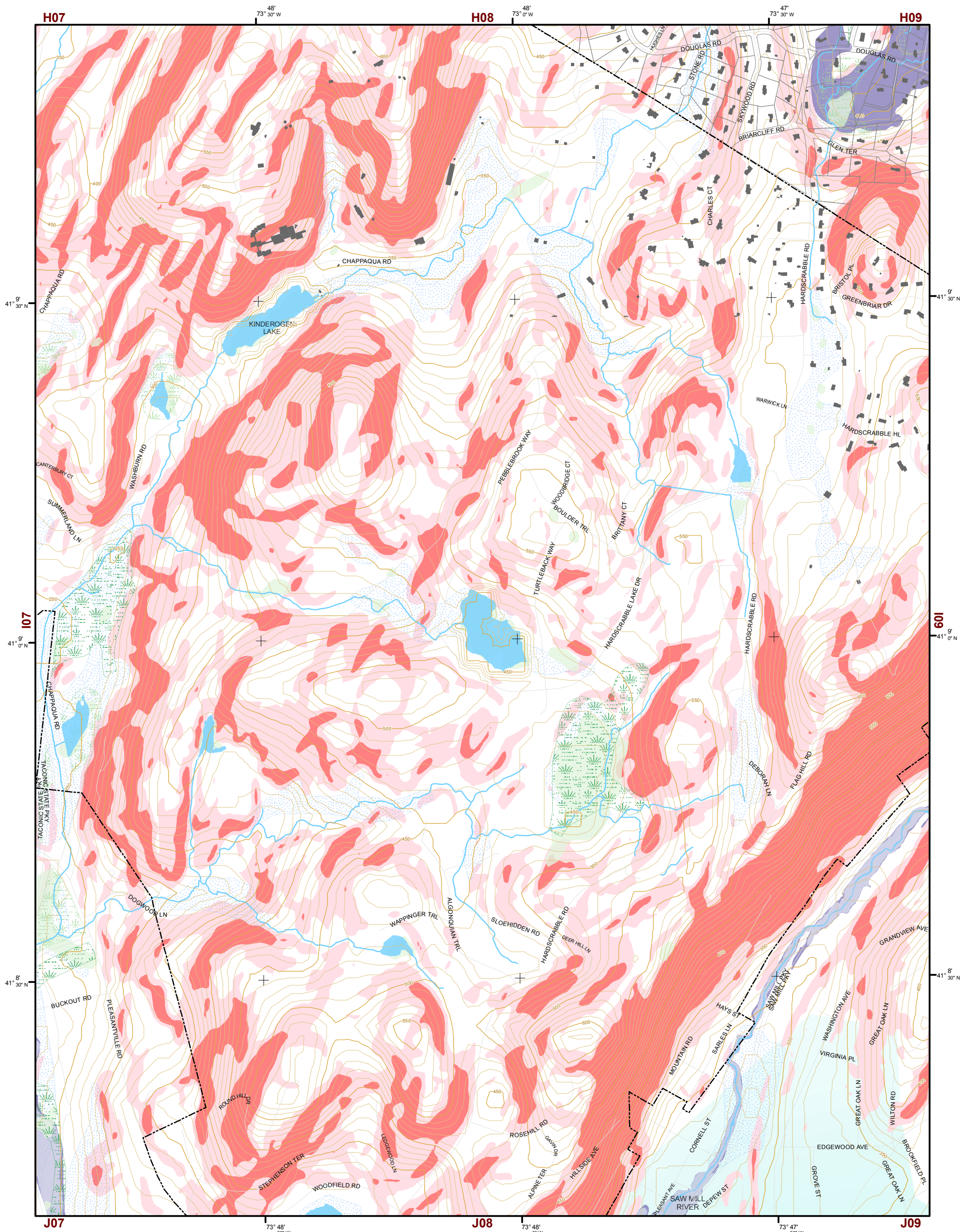
TILE INDEX

| | | | | | |
|-----|-----|-----|-----|-----|-----|
| E06 | E07 | E08 | E09 | E10 | E11 |
| F06 | F07 | F08 | F09 | F10 | F11 |
| G06 | G07 | G08 | G09 | G10 | G11 |
| H06 | H07 | H08 | H09 | H10 | H11 |
| I06 | I07 | I08 | I09 | I10 | I11 |
| J06 | J07 | J08 | J09 | J10 | J11 |

This map is for general information only and should not be used for site specific planning. Data was collected from a wide range of local, state, and federal GIS databases "as is." Westchester County assumes no liability to any party for any loss or damage caused by errors or omissions resulting from negligence, accident or any other cause.



Westchester County Board of Legislators
Andrew J. Span, Westchester County Executive

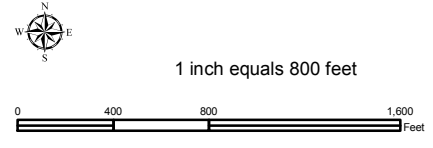
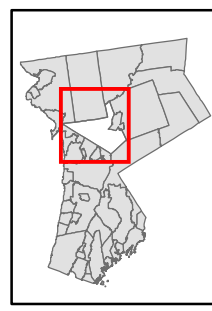


Natural Resource Inventory

Town of New Castle

Map # 108

TILE INDEX



Legend

- 10' TOPO
- 50' TOPO
- Streams
- Lakes, Ponds or Reservoirs
- Aquifer
- Drainage Divides
- Hydric Soils
- Municipal Boundaries
- Tax Parcels
- Buildings
- Slope**
- 15% - 25%
- 25% and Over
- National Wetlands Inventory

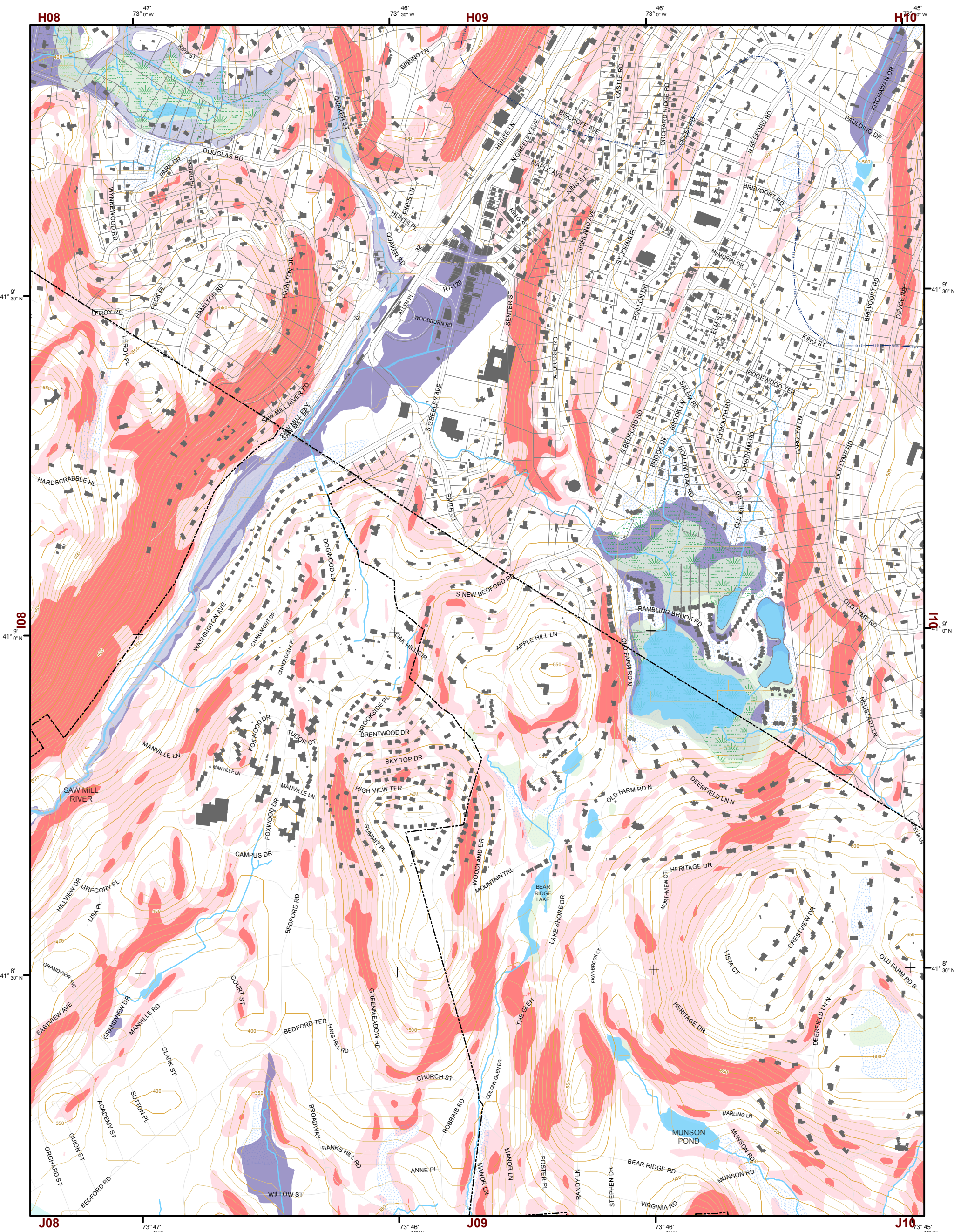
- NYSDEC Wetlands**
- Greater than 12.4 acres
- Less than 12.4 acres
- Floodplains**
- 100
- 500

| | | | | | |
|-----|-----|-----|-----|-----|-----|
| E06 | E07 | E08 | E09 | E10 | E11 |
| F06 | F07 | F08 | F09 | F10 | F11 |
| G06 | G07 | G08 | G09 | G10 | G11 |
| H06 | H07 | H08 | H09 | H10 | H11 |
| I06 | I07 | I08 | I09 | I10 | I11 |
| J06 | J07 | J08 | J09 | J10 | J11 |

This map is for general information only and should not be used for site specific planning. Data was collected from a wide range of local, state, and federal GIS databases "as is." Westchester County assumes no liability to any party for any loss or damage caused by errors or omissions resulting from negligence, accident or any other cause.



Westchester County Board of Legislators
 Andrew J. Span, Westchester County Executive

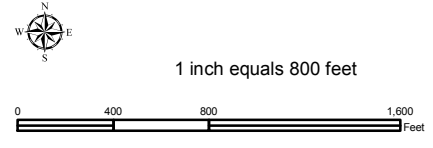
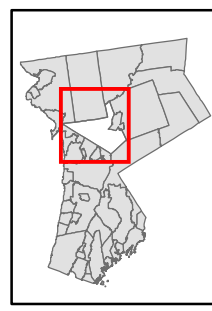


Natural Resource Inventory

Town of New Castle

Map # 109

TILE INDEX



Legend

- 10' TOPO
- 50' TOPO
- Streams
- Lakes, Ponds or Reservoirs
- Aquifer
- Drainage Divides
- Hydric Soils
- Municipal Boundaries
- Tax Parcels
- Buildings
- Slope 15% - 25%
- Slope 25% and Over
- National Wetlands Inventory

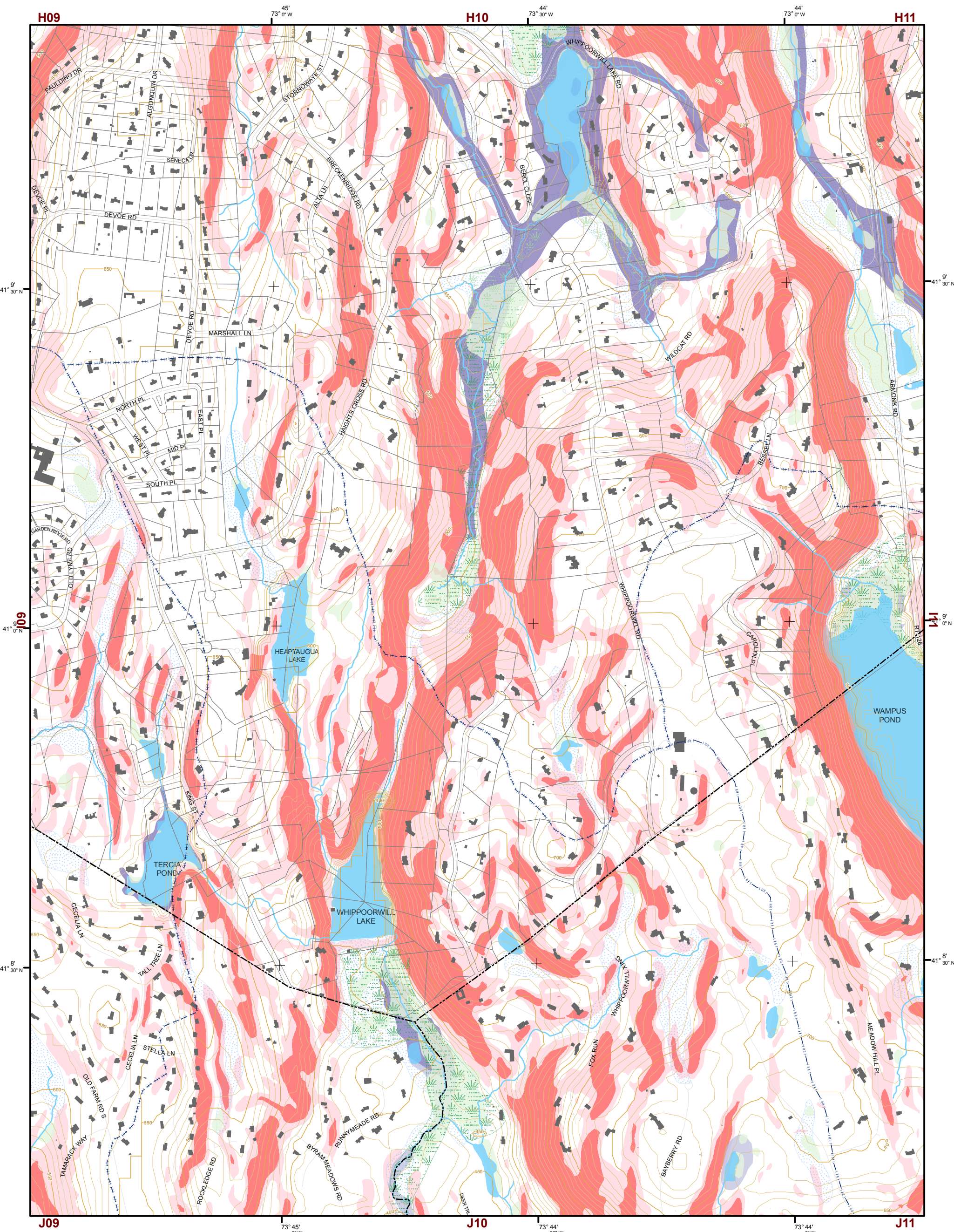
- NYSDEC Wetlands Greater than 12.4 acres
- NYSDEC Wetlands Less than 12.4 acres
- Floodplains 100
- Floodplains 500

| | | | | | |
|-----|-----|-----|-----|-----|-----|
| E06 | E07 | E08 | E09 | E10 | E11 |
| F06 | F07 | F08 | F09 | F10 | F11 |
| G06 | G07 | G08 | G09 | G10 | G11 |
| H06 | H07 | H08 | H09 | H10 | H11 |
| I06 | I07 | I08 | I09 | I10 | I11 |
| J06 | J07 | J08 | J09 | J10 | J11 |

This map is for general information only and should not be used for site specific planning. Data was collected from a wide range of local, state, and federal GIS databases "as is." Westchester County assumes no liability to any party for any loss or damage caused by errors or omissions resulting from negligence, accident or any other cause.



Westchester County Board of Legislators
Andrew J. Span, Westchester County Executive



Natural Resource Inventory

Town of New Castle

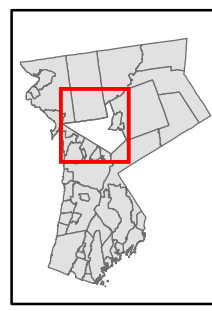
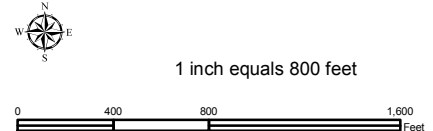
Map # I10

TILE INDEX

| | | | | | |
|-----|-----|-----|-----|-----|-----|
| E06 | E07 | E08 | E09 | E10 | E11 |
| F06 | F07 | F08 | F09 | F10 | F11 |
| G06 | G07 | G08 | G09 | G10 | G11 |
| H06 | H07 | H08 | H09 | H10 | H11 |
| I06 | I07 | I08 | I09 | I10 | I11 |
| J06 | J07 | J08 | J09 | J10 | J11 |

Legend

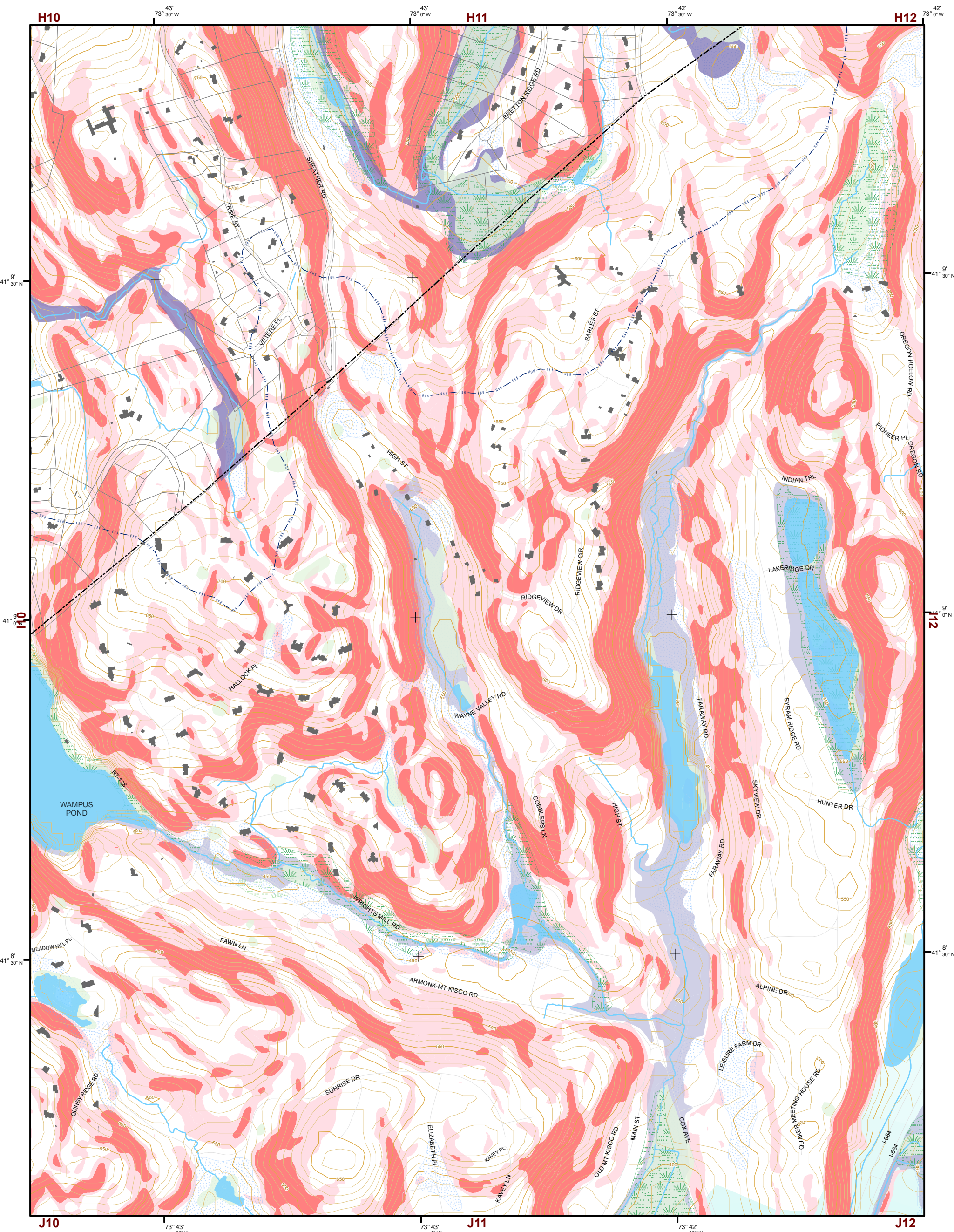
- 10' TOPO
- 50' TOPO
- Streams
- Lakes, Ponds or Reservoirs
- Aquifer
- Drainage Divides
- Hydric Soils
- Municipal Boundaries
- Tax Parcels
- Buildings
- Slope 15% - 25%
- Slope 25% and Over
- National Wetlands Inventory
- NYSDEC Wetlands Greater than 12.4 acres
- NYSDEC Wetlands Less than 12.4 acres
- Floodplains 100
- Floodplains 500



This map is for general information only and should not be used for site specific planning. Data was collected from a wide range of local, state, and federal GIS databases "as is." Westchester County assumes no liability to any party for any loss or damage caused by errors or omissions resulting from negligence, accident or any other cause.

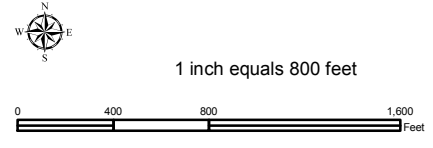
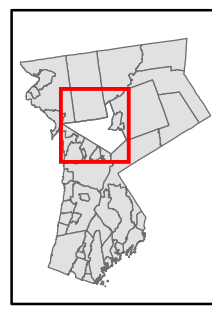


Westchester County Board of Legislators
 Andrew J. Span, Westchester County Executive



Natural Resource Inventory Map # I11

Town of New Castle



- Legend**
- 10' TOPO
 - 50' TOPO
 - Streams
 - Lakes, Ponds or Reservoirs
 - Aquifer
 - Drainage Divides
 - Hydric Soils
 - Municipal Boundaries
 - Tax Parcels
 - Buildings
 - Slope**
 - 15% - 25%
 - 25% and Over
 - National Wetlands Inventory
 - NYSDEC Wetlands**
 - Greater than 12.4 acres
 - Less than 12.4 acres
 - Floodplains**
 - 100
 - 500

TILE INDEX

| | | | | | |
|-----|-----|-----|-----|-----|-----|
| E06 | E07 | E08 | E09 | E10 | E11 |
| F06 | F07 | F08 | F09 | F10 | F11 |
| G06 | G07 | G08 | G09 | G10 | G11 |
| H06 | H07 | H08 | H09 | H10 | H11 |
| I06 | I07 | I08 | I09 | I10 | I11 |
| J06 | J07 | J08 | J09 | J10 | J11 |

This map is for general information only and should not be used for site specific planning. Data was collected from a wide range of local, state, and federal GIS databases "as is." Westchester County assumes no liability to any party for any loss or damage caused by errors or omissions resulting from negligence, accident or any other cause.



Westchester County Board of Legislators
 Andrew J. Span, Westchester County Executive