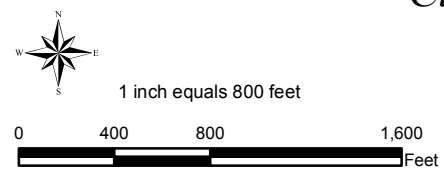
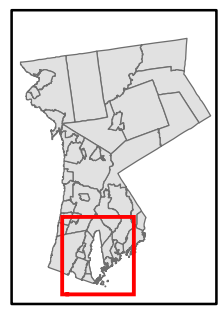


Natural Resource Inventory

City of New Rochelle

Map # N09

TILE INDEX



Legend

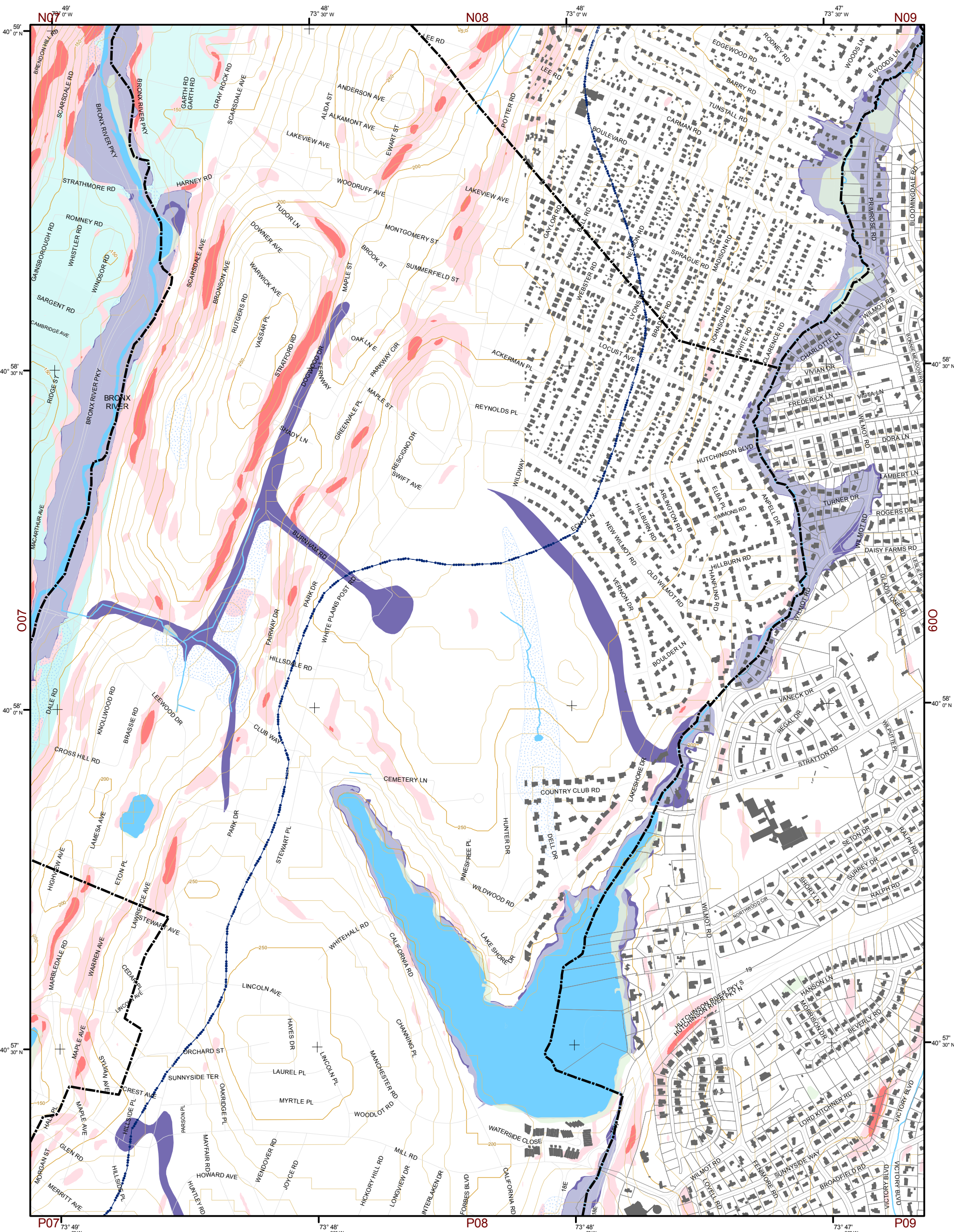
- 50' TOPO
- 10' TOPO
- Streams
- Drainage Divides
- Lakes, Ponds or Reservoirs
- Hydric Soils
- Aquifer
- Tidal Wetlands
- Municipal Boundaries
- Tax Parcels
- Buildings
- Slope 15% - 25%
- Slope 25% and Over
- NYSDEC Wetlands Greater than 12.4 acres
- NYSDEC Wetlands Less than 12.4 acres
- National Wetlands Inventory
- Floodplains 100
- Floodplains 500

N06	N07	N08	N09	N10	N11	N12
O06	O07	O08	O09	O10	O11	O12
P06	P07	P08	P09	P10	P11	P12
Q06	Q07	Q08	Q09	Q10		
		R08	R09	R10		

This map is for general information only and should not be used for site specific planning. Data was collected from a wide range of local, state, and federal GIS databases "as is." Westchester County assumes no liability to any party for any loss or damage caused by errors or omissions resulting from negligence, accident or any other cause.



Westchester County Board of Legislators



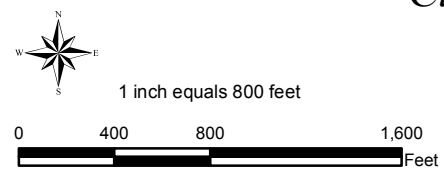
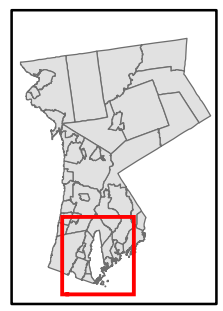
Natural Resource Inventory

City of New Rochelle

Map # 008

TILE INDEX

N06	N07	N08	N09	N10	N11	N12
O06	O07	O08	O09	O10	O11	O12
P06	P07	P08	P09	P10	P11	P12
Q06	Q07	Q08	Q09	Q10	Q11	Q12
		R08	R09	R10		



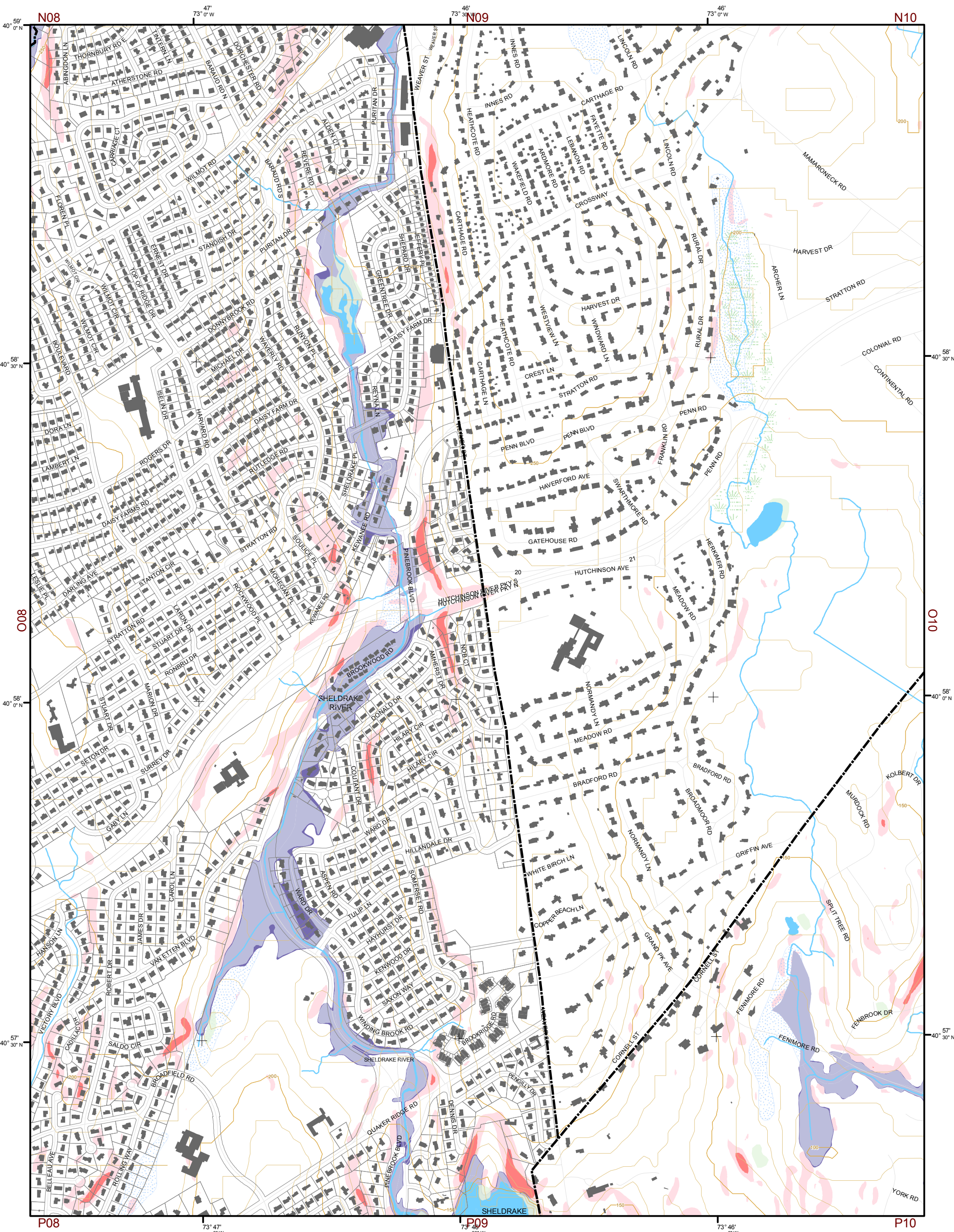
Legend

- 50' TOPO
- 10' TOPO
- Streams
- Drainage Divides
- Lakes, Ponds or Reservoirs
- Hydric Soils
- Aquifer
- Tidal Wetlands
- Municipal Boundaries
- Tax Parcels
- Buildings
- 15% - 25%
- 25% and Over
- Greater than 12.4 acres
- Less than 12.4 acres
- National Wetlands Inventory
- 100
- 500

This map is for general information only and should not be used for site specific planning. Data was collected from a wide range of local, state, and federal GIS databases "as is." Westchester County assumes no liability to any party for any loss or damage caused by errors or omissions resulting from negligence, accident or any other cause.



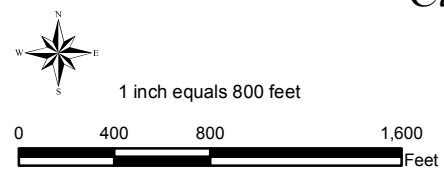
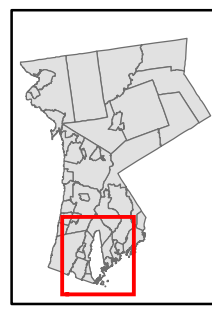
Westchester County
 Andrew J. Spano, Westchester County Executive
 County Board of Legislators



Natural Resource Inventory

City of New Rochelle

Map # 009



- Legend**
- 50' TOPO
 - 10' TOPO
 - Streams
 - Drainage Divides
 - Lakes, Ponds or Reservoirs
 - Hydric Soils
 - Aquifer
 - Tidal Wetlands
 - Municipal Boundaries
 - Tax Parcels
 - Buildings
 - Slope
 - 15% - 25%
 - 25% and Over
 - NYSDEC Wetlands
 - Greater than 12.4 acres
 - Less than 12.4 acres
 - National Wetlands Inventory
 - Floodplains
 - 100
 - 500

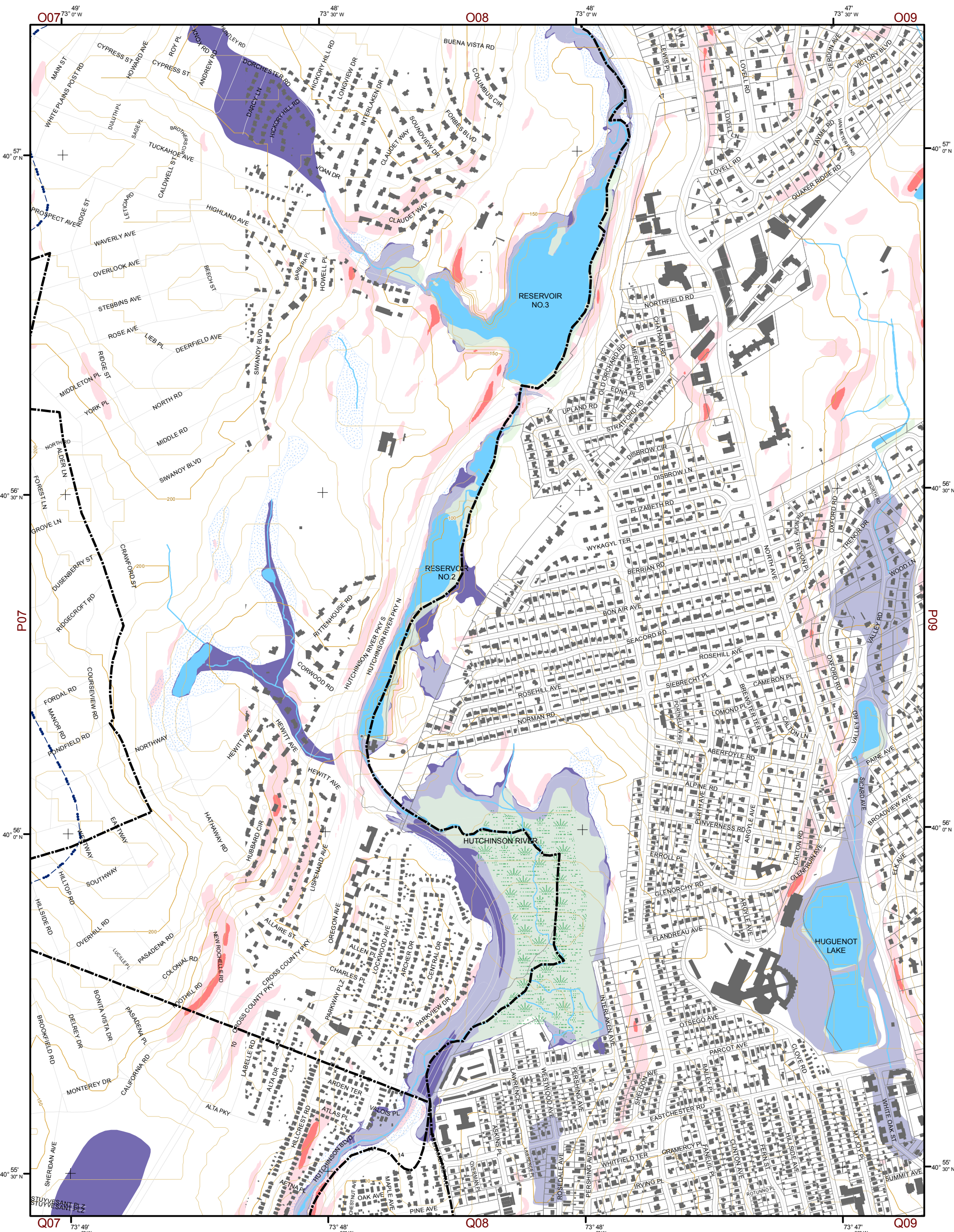
TILE INDEX

N06	N07	N08	N09	N10	N11	N12
O06	O07	O08	O09	O10	O11	O12
P06	P07	P08	P09	P10	P11	P12
Q06	Q07	Q08	Q09	Q10		
	R08	R09	R10			

This map is for general information only and should not be used for site specific planning. Data was collected from a wide range of local, state, and federal GIS databases "as is." Westchester County assumes no liability to any party for any loss or damage caused by errors or omissions resulting from negligence, accident or any other cause.



Westchester
County Board of Legislators



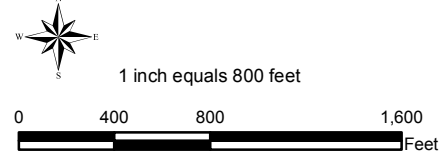
Natural Resource Inventory

City of New Rochelle

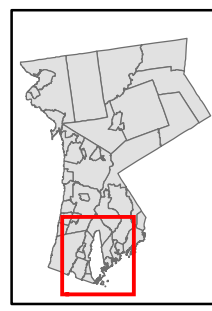
Map # P08

TILE INDEX

N06	N07	N08	N09	N10	N11	N12
O06	O07	O08	O09	O10	O11	O12
P06	P07	P08	P09	P10	P11	P12
Q06	Q07	Q08	Q09	Q10		
	R08	R09	R10			



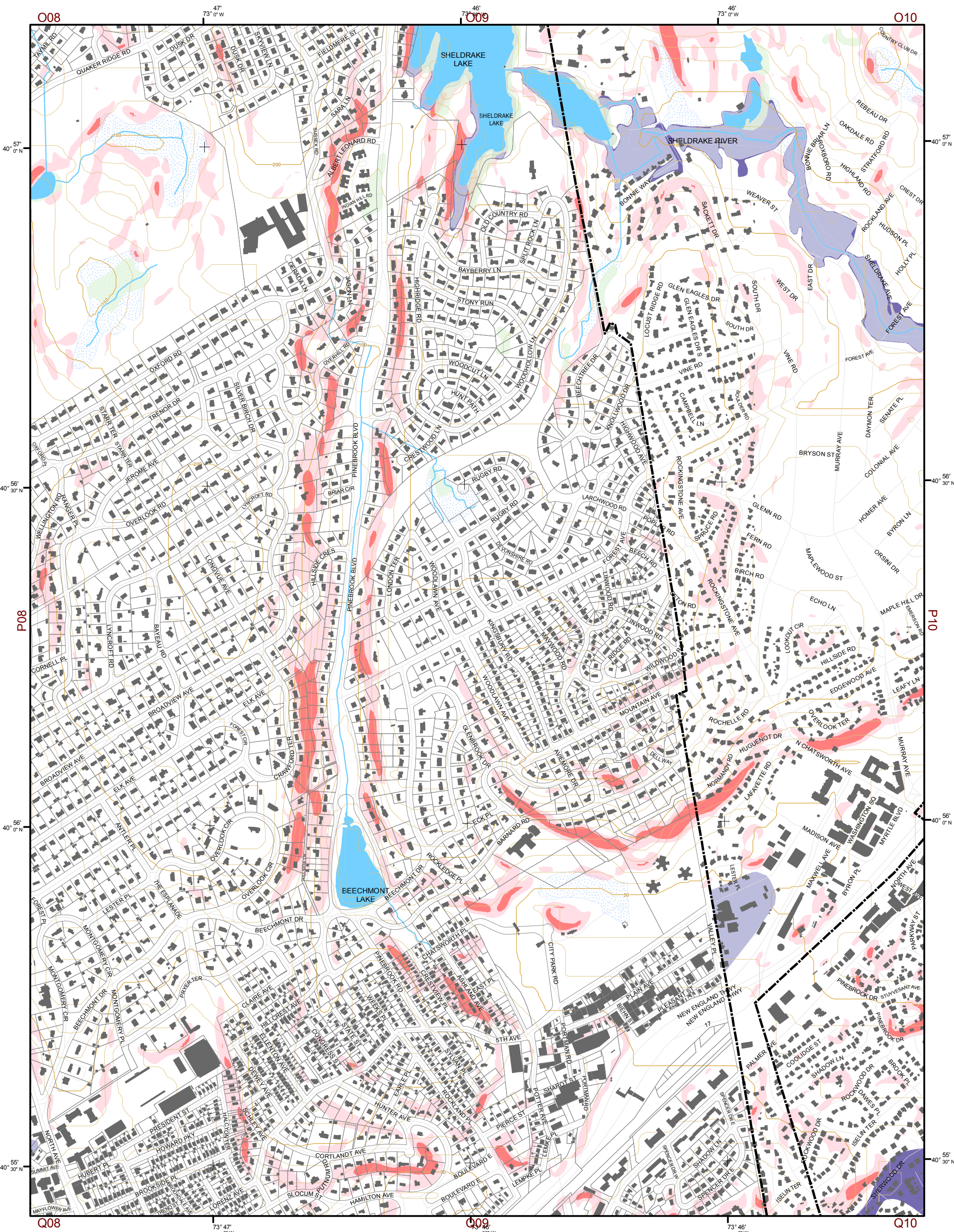
- Legend**
- 50' TOPO
 - 10' TOPO
 - Streams
 - Drainage Divides
 - Lakes, Ponds or Reservoirs
 - Hydric Soils
 - Aquifer
 - Tidal Wetlands
 - Municipal Boundaries
 - Tax Parcels
 - Buildings
 - Slope
 - 15% - 25%
 - 25% and Over
 - NYSDEC Wetlands
 - Greater than 12.4 acres
 - Less than 12.4 acres
 - National Wetlands Inventory
 - Floodplains
 - 100
 - 500



This map is for general information only and should not be used for site specific planning. Data was collected from a wide range of local, state, and federal GIS databases "as is." Westchester County assumes no liability to any party for any loss or damage caused by errors or omissions resulting from negligence, accident or any other cause.

GIS GEOGRAPHIC INFORMATION SYSTEMS

Westchester County Board of Legislators
Andrew J. Span, Westchester County Executive



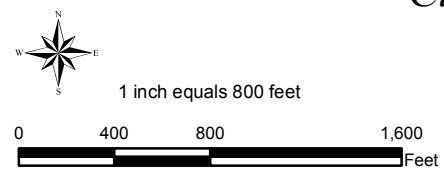
Natural Resource Inventory

City of New Rochelle

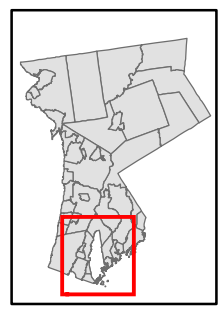
Map # P09

TILE INDEX

N06	N07	N08	N09	N10	N11	N12
O06	O07	O08	O09	O10	O11	O12
P06	P07	P08	P09	P10	P11	P12
Q06	Q07	Q08	Q09	Q10		
		R08	R09	R10		

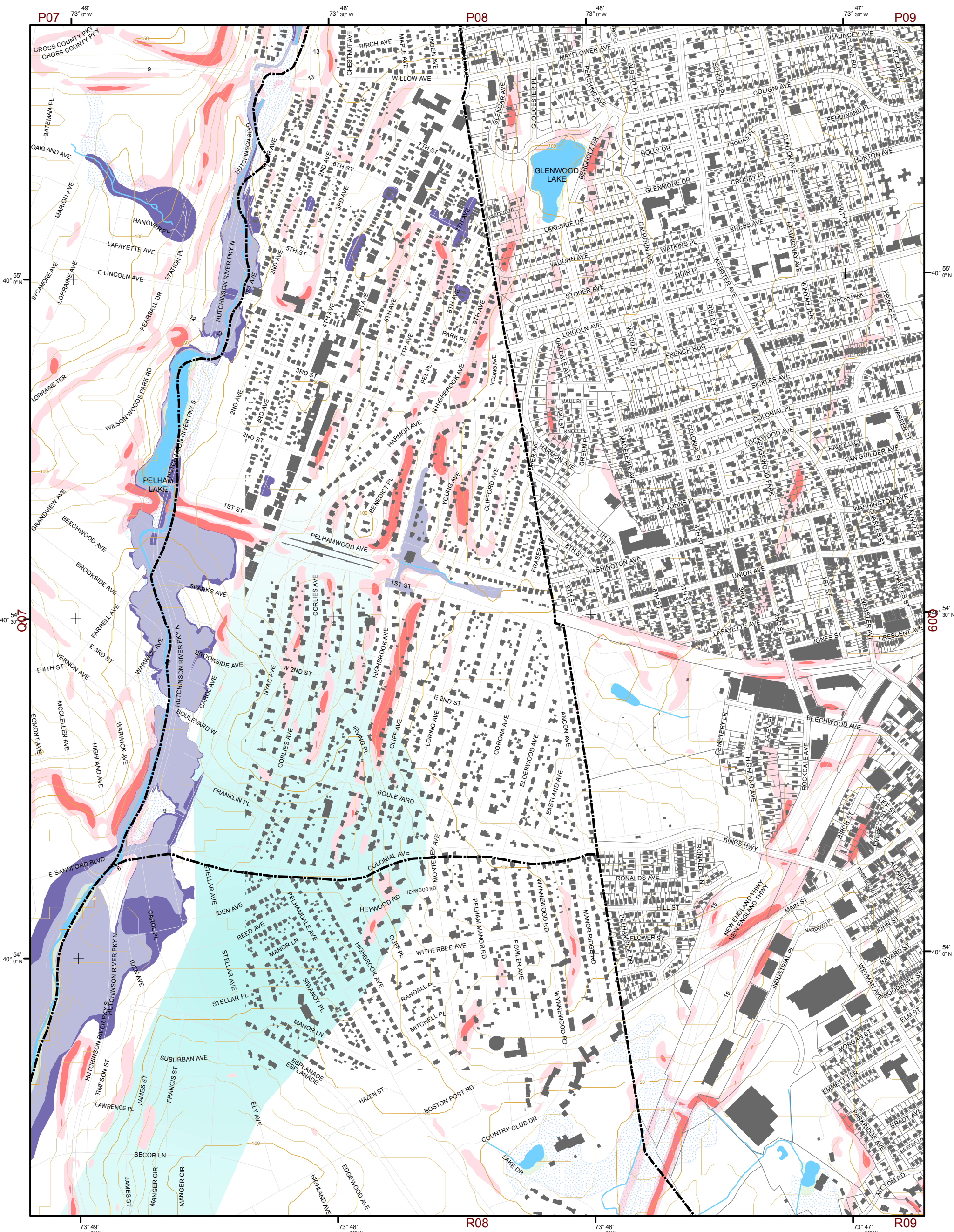


- Legend**
- 50' TOPO
 - 10' TOPO
 - Streams
 - Drainage Divides
 - Lakes, Ponds or Reservoirs
 - Hydric Soils
 - Aquifer
 - Tidal Wetlands
 - Municipal Boundaries
 - Tax Parcels
 - Buildings
 - 15% - 25%
 - 25% and Over
 - Greater than 12.4 acres
 - Less than 12.4 acres
 - National Wetlands Inventory
 - 100
 - 500



This map is for general information only and should not be used for site specific planning. Data was collected from a wide range of local, state, and federal GIS databases "as is." Westchester County assumes no liability to any party for any loss or damage caused by errors or omissions resulting from negligence, accident or any other cause.



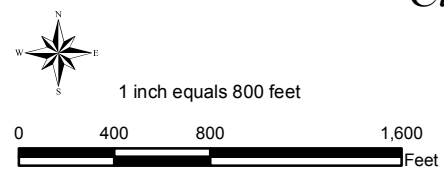
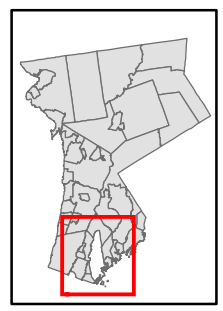


Natural Resource Inventory

City of New Rochelle

Map # Q08

TILE INDEX



Legend

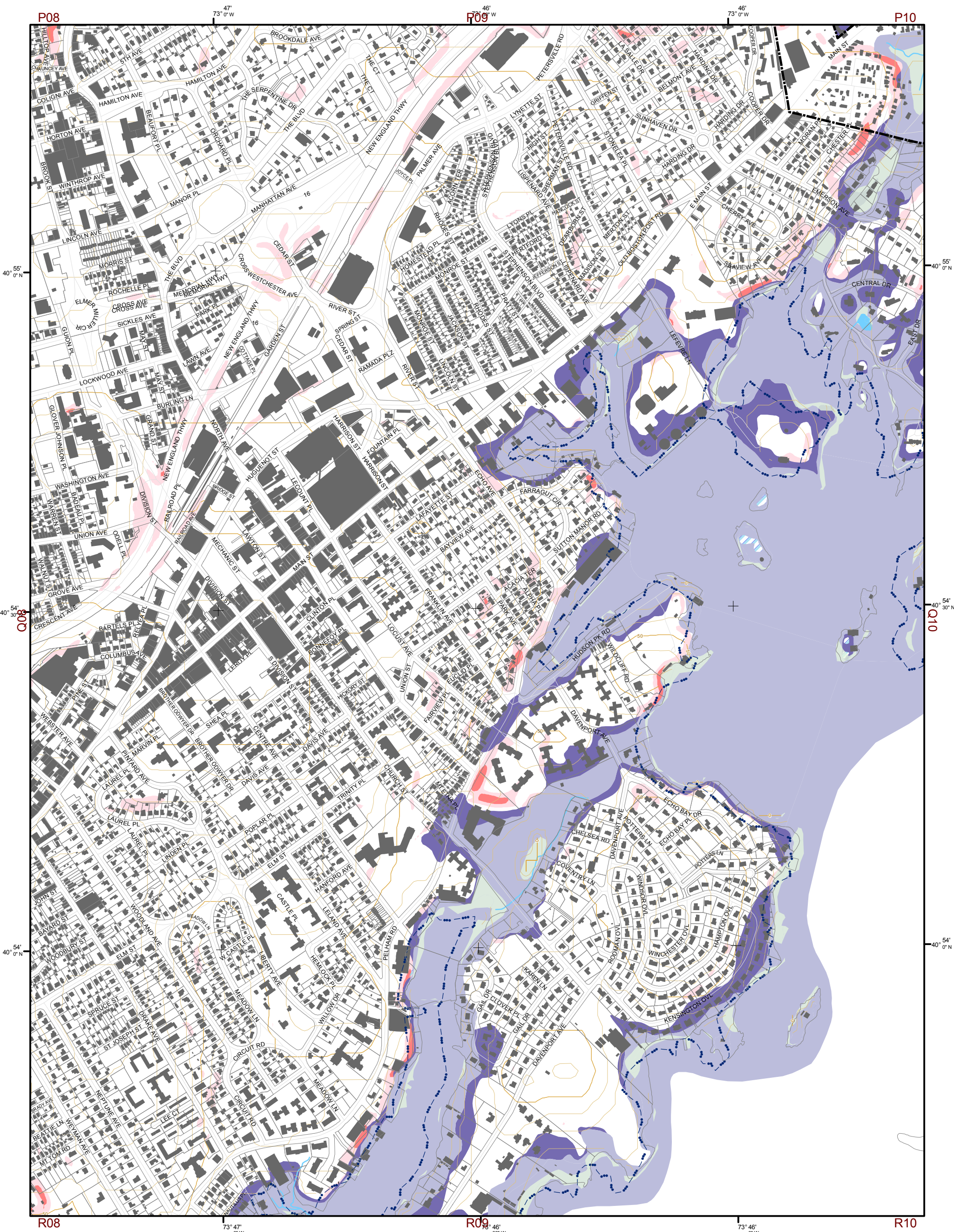
- 50' TOPO
- 10' TOPO
- Streams
- Drainage Divides
- Lakes, Ponds or Reservoirs
- Hydric Soils
- Aquifer
- Tidal Wetlands
- Municipal Boundaries
- Tax Parcels
- Buildings
- 15% - 25%
- 25% and Over
- Greater than 12.4 acres
- Less than 12.4 acres
- National Wetlands Inventory
- 100
- 500

N06	N07	N08	N09	N10	N11	N12
O06	O07	O08	O09	O10	O11	O12
P06	P07	P08	P09	P10	P11	P12
Q06	Q07	Q08	Q09	Q10		
		R08	R09	R10		

This map is for general information only and should not be used for site specific planning. Data was collected from a wide range of local, state, and federal GIS databases "as is." Westchester County assumes no liability to any party for any loss or damage caused by errors or omissions resulting from negligence, accident or any other cause.



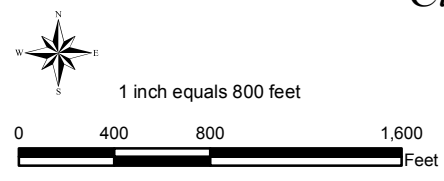
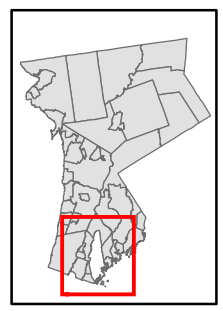
Westchester County
 Andrew J. Span, Westchester County Executive
 County Board of Legislators



Natural Resource Inventory

City of New Rochelle

Map # Q09



Legend

- 50' TOPO
- 10' TOPO
- Streams
- Drainage Divides
- Lakes, Ponds or Reservoirs
- Hydric Soils
- Aquifer
- Tidal Wetlands
- Municipal Boundaries
- Tax Parcels
- Buildings
- 15% - 25%
- 25% and Over
- NYSDEC Wetlands
Greater than 12.4 acres
- NYSDEC Wetlands
Less than 12.4 acres
- National Wetlands Inventory
- Floodplains
100
- Floodplains
500

TILE INDEX

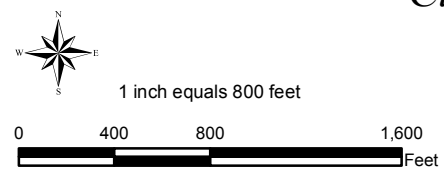
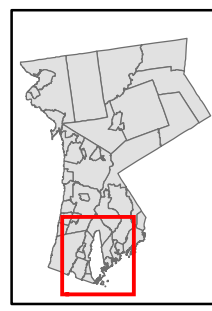
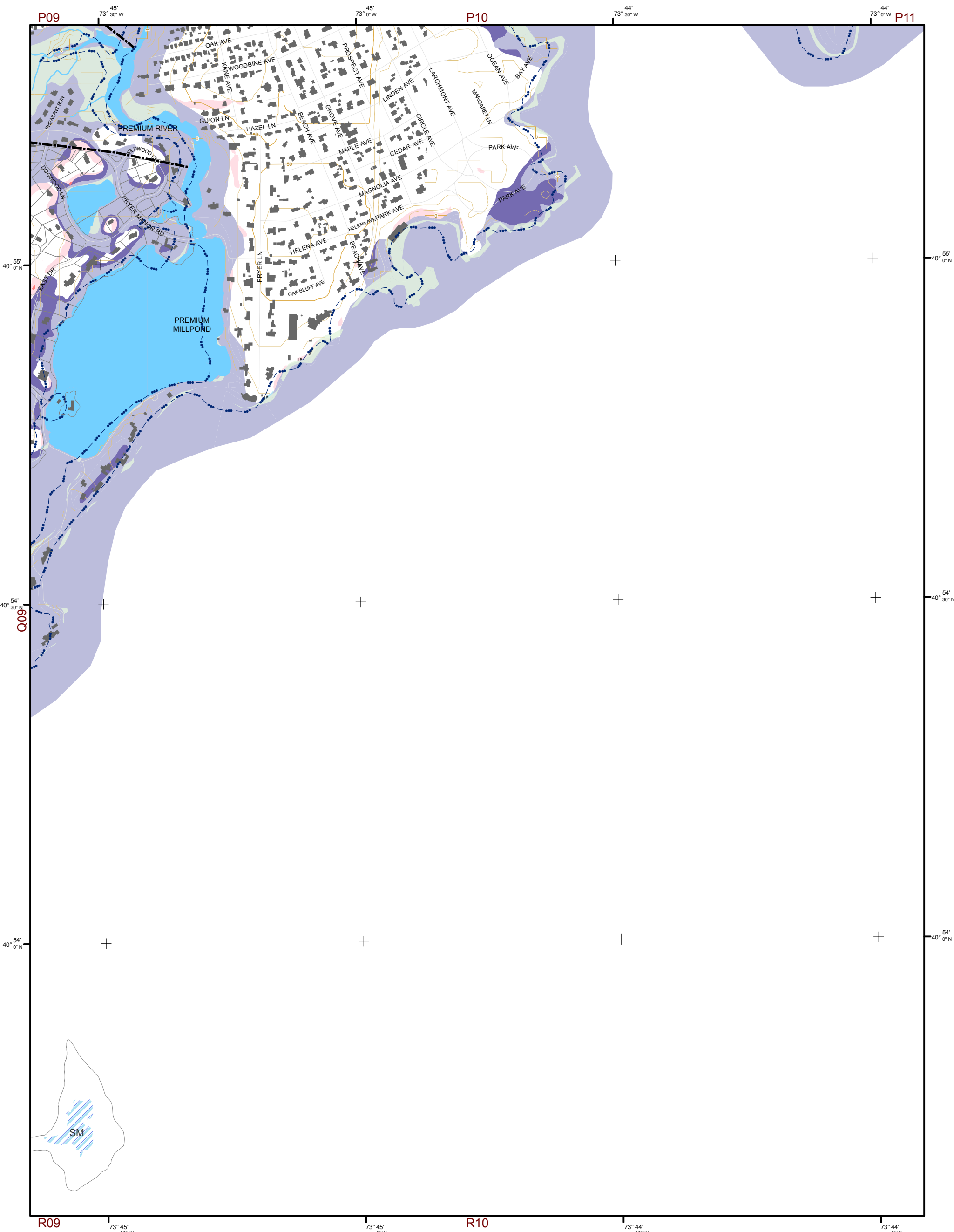
N06	N07	N08	N09	N10	N11	N12
O06	O07	O08	O09	O10	O11	O12
P06	P07	P08	P09	P10	P11	P12
Q06	Q07	Q08	Q09	Q10		
		R08	R09	R10		

This map is for general information only and should not be used for site specific planning. Data was collected from a wide range of local, state, and federal GIS databases "as is." Westchester County assumes no liability to any party for any loss or damage caused by errors or omissions resulting from negligence, accident or any other cause.



Westchester
COUNTY
New York

Andrew J. Spano, Westchester County Executive
County Board of Legislators

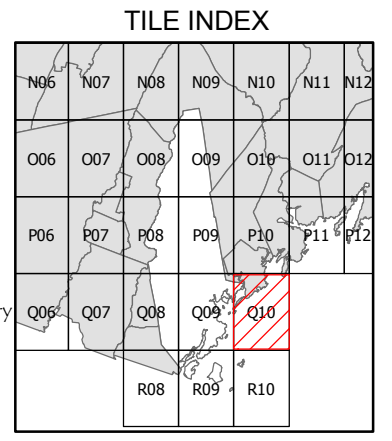


Natural Resource Inventory

City of New Rochelle

Map # Q10

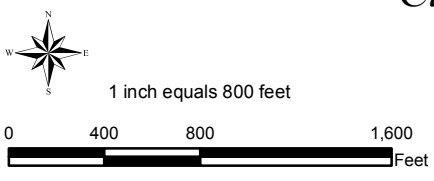
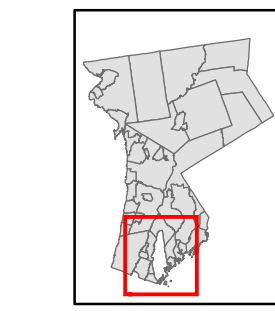
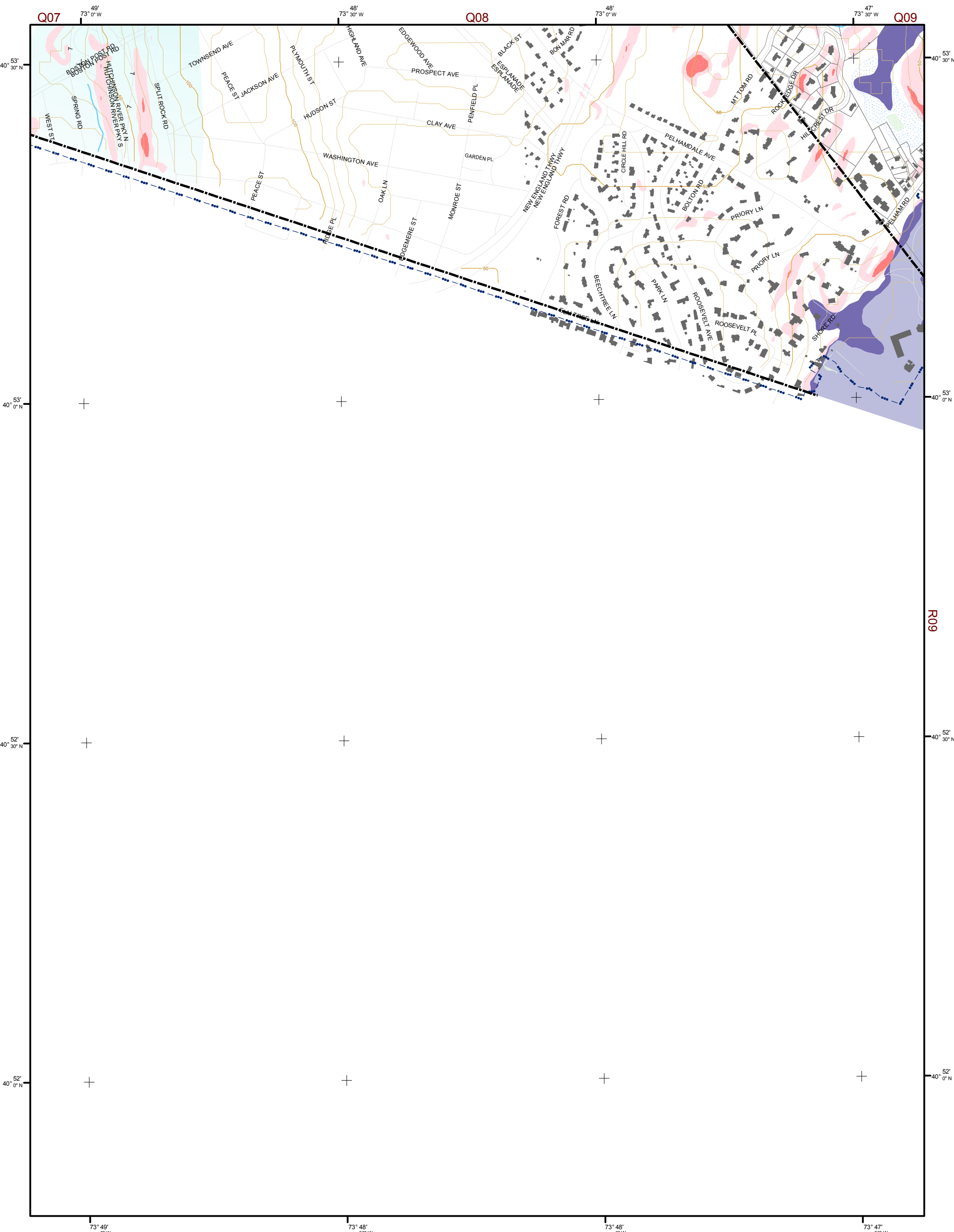
- Legend**
- 50' TOPO
 - 10' TOPO
 - Streams
 - Drainage Divides
 - Lakes, Ponds or Reservoirs
 - Hydric Soils
 - Aquifer
 - Tidal Wetlands
 - Municipal Boundaries
 - Tax Parcels
 - Buildings
 - 15% - 25%
 - 25% and Over
 - Greater than 12.4 acres
 - Less than 12.4 acres
 - National Wetlands Inventory
 - 100
 - 500



This map is for general information only and should not be used for site specific planning. Data was collected from a wide range of local, state, and federal GIS databases "as is." Westchester County assumes no liability to any party for any loss or damage caused by errors or omissions resulting from negligence, accident or any other cause.



Westchester
County
Andrew J. Spano, Westchester County Executive
County Board of Legislators



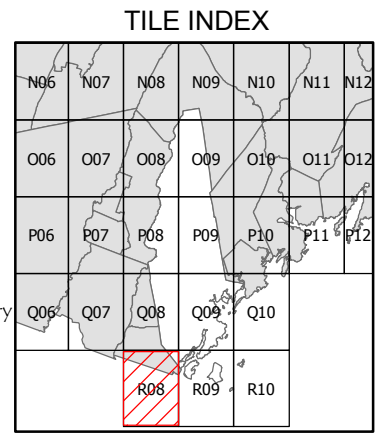
Natural Resource Inventory

City of New Rochelle

Map # R08

- Legend**
- 50' TOPO
 - 10' TOPO
 - Streams
 - Drainage Divides
 - Lakes, Ponds or Reservoirs
 - Hydric Soils
 - Aquifer
 - Tidal Wetlands
 - Municipal Boundaries
 - Tax Parcels
 - Buildings
 - Slope
 - 15% - 25%
 - 25% and Over

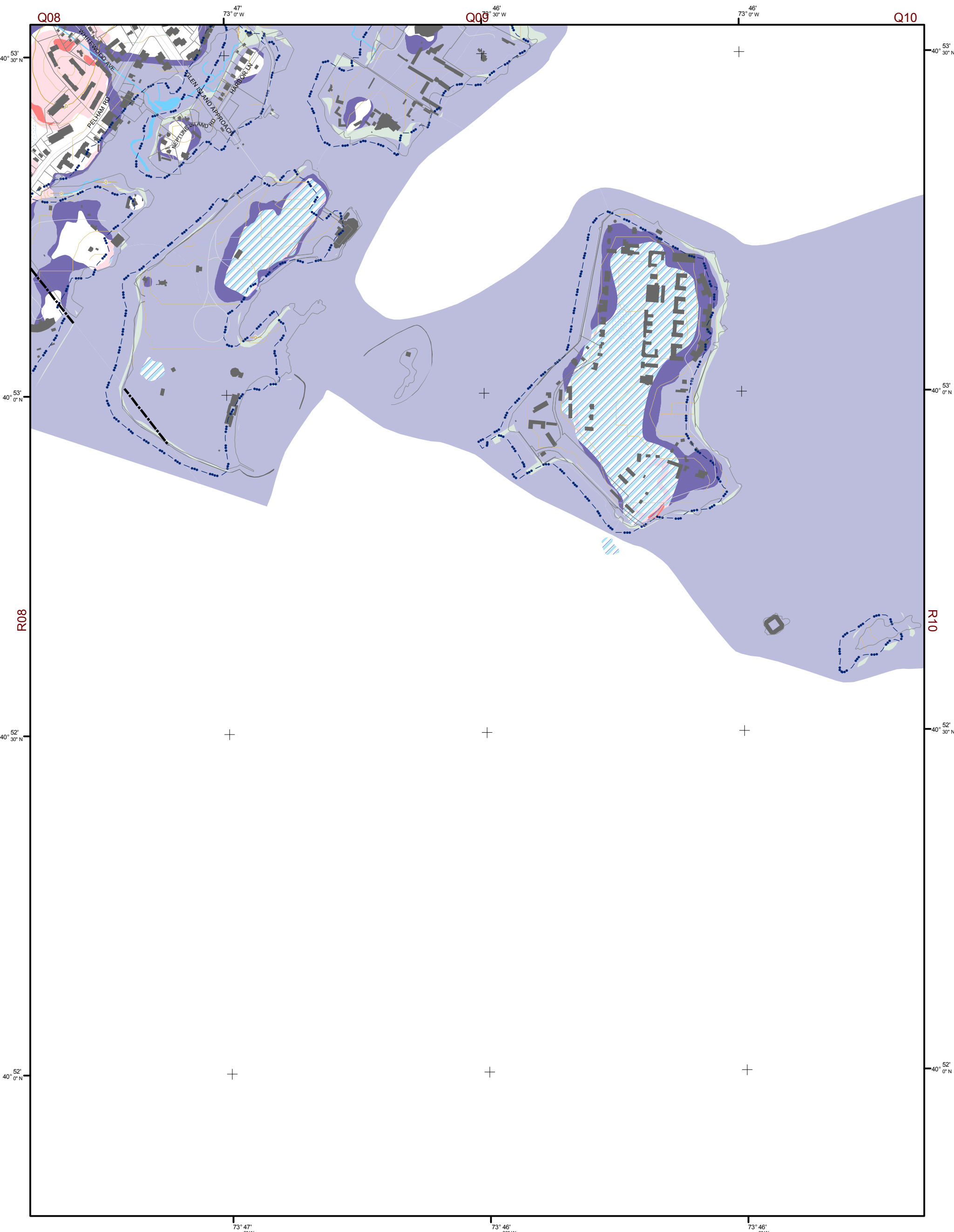
- NYSDEC Wetlands
 - Greater than 12.4 acres
 - Less than 12.4 acres
- National Wetlands Inventory
- Floodplains
 - 100
 - 500



This map is for general information only and should not be used for site specific planning. Data was collected from a wide range of local, state, and federal GIS databases "as is." Westchester County assumes no liability to any party for any loss or damage caused by errors or omissions resulting from negligence, accident or any other cause.

Westchester County Board of Legislators
Andrew J. Spano, Westchester County Executive





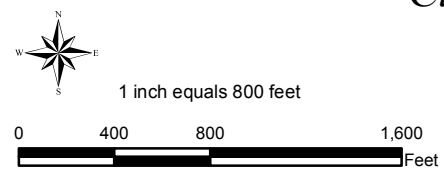
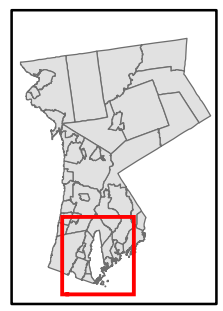
Natural Resource Inventory

City of New Rochelle

Map # R09

TILE INDEX

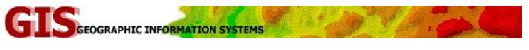
N06	N07	N08	N09	N10	N11	N12
O06	O07	O08	O09	O10	O11	O12
P06	P07	P08	P09	P10	P11	P12
Q06	Q07	Q08	Q09	Q10		
		R08	R09	R10		



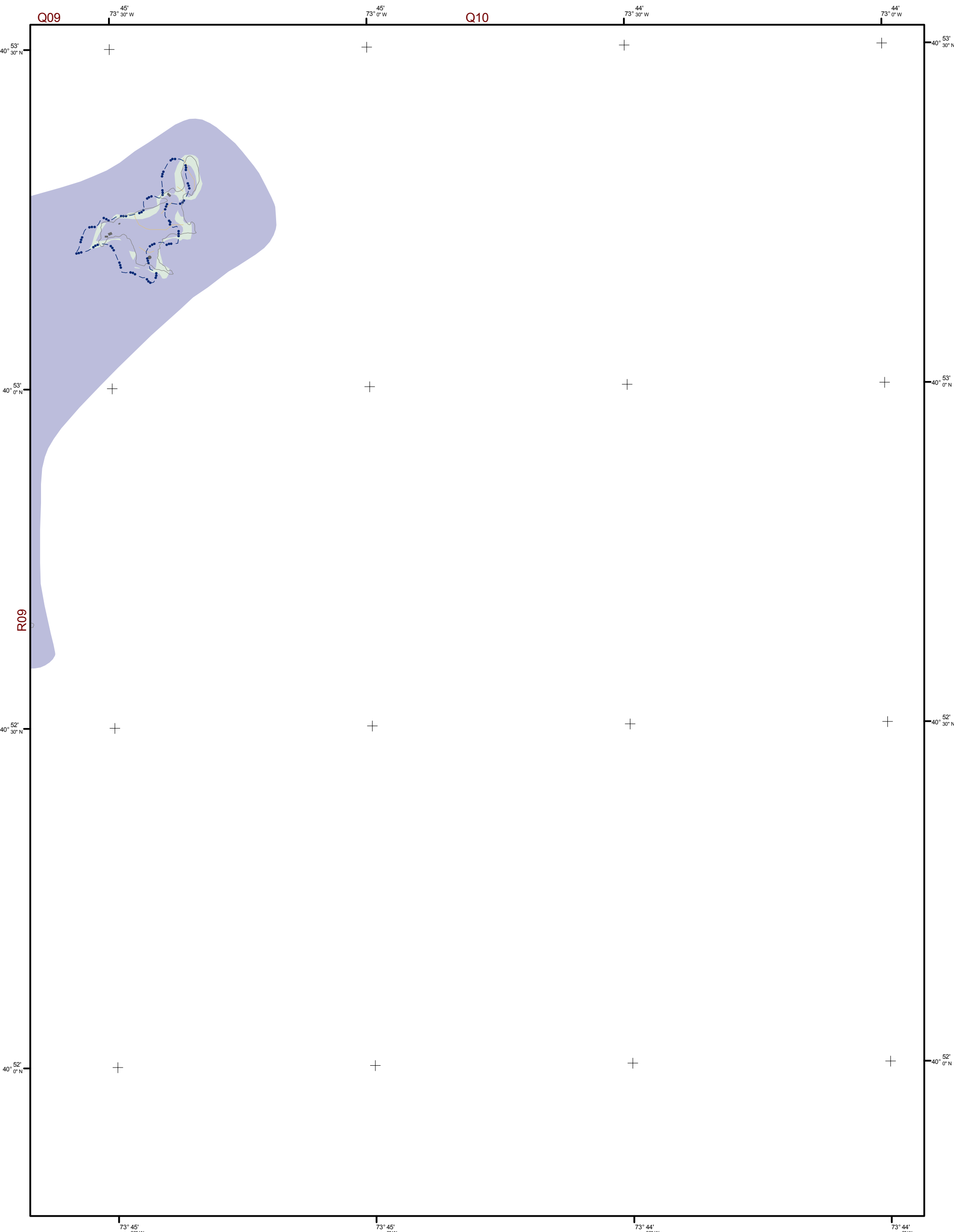
Legend

- 50' TOPO
- 10' TOPO
- Streams
- Drainage Divides
- Lakes, Ponds or Reservoirs
- Hydric Soils
- Aquifer
- Tidal Wetlands
- Municipal Boundaries
- Tax Parcels
- Buildings
- 15% - 25%
- 25% and Over
- Greater than 12.4 acres
- Less than 12.4 acres
- National Wetlands Inventory
- 100
- 500

This map is for general information only and should not be used for site specific planning. Data was collected from a wide range of local, state, and federal GIS databases "as is." Westchester County assumes no liability to any party for any loss or damage caused by errors or omissions resulting from negligence, accident or any other cause.



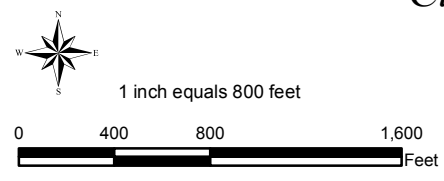
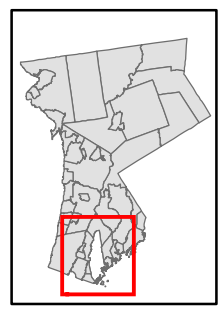
Westchester
County Board of Legislators



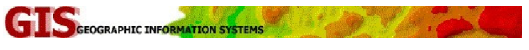
Natural Resource Inventory

City of New Rochelle

Map # R10



This map is for general information only and should not be used for site specific planning. Data was collected from a wide range of local, state, and federal GIS databases "as is." Westchester County assumes no liability to any party for any loss or damage caused by errors or omissions resulting from negligence, accident or any other cause.



Westchester
 Andrew J. Spano, Westchester County Executive
 County Board of Legislators

Legend

- 50' TOPO
- 10' TOPO
- Streams
- Drainage Divides
- Lakes, Ponds or Reservoirs
- Hydric Soils
- Aquifer
- Tidal Wetlands
- Municipal Boundaries
- Tax Parcels
- Buildings
- Slope
 - 15% - 25%
 - 25% and Over

- NYSDEC Wetlands
 - Greater than 12.4 acres
 - Less than 12.4 acres
- National Wetlands Inventory
- Floodplains
 - 100
 - 500

TILE INDEX

