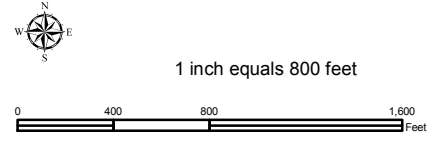
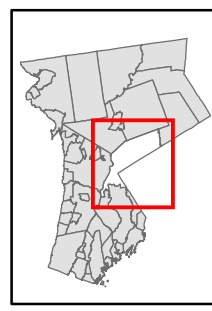


Natural Resource Inventory

Town of North Castle

Map # H11



Legend

- 10' TOPO
- 50' TOPO
- Streams
- Lakes, Ponds or Reservoirs
- Aquifer
- Drainage Divides
- Hydric Soils
- Municipal Boundaries
- Tax Parcels
- Buildings
- Slope 15% - 25%
- Slope 25% and Over
- National Wetlands Inventory
- NYSDEC Wetlands Greater than 12.4 acres
- NYSDEC Wetlands Less than 12.4 acres
- Floodplains 100
- Floodplains 500

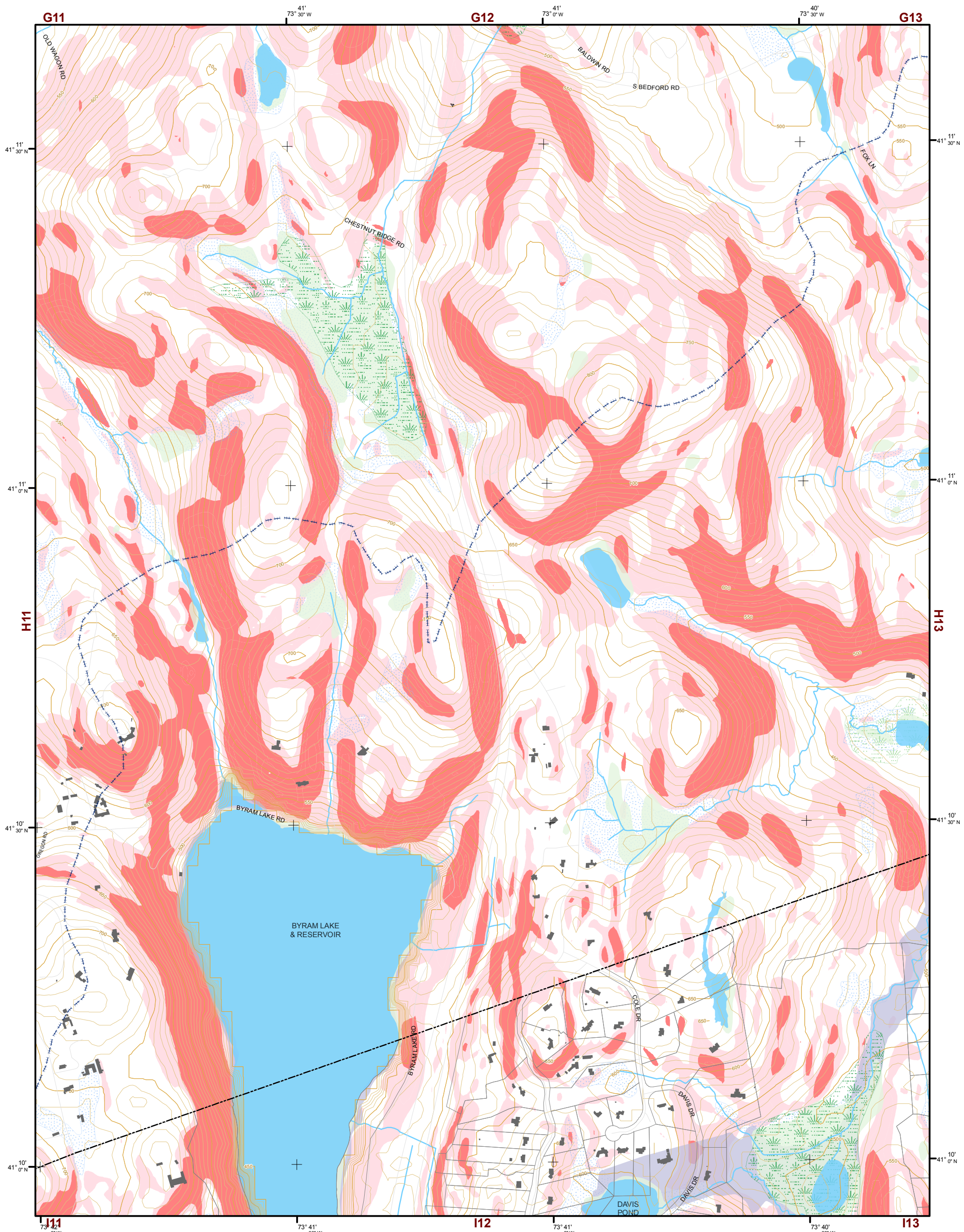
TILE INDEX

G09	G10	G11	G12	G13	G14	G15
H09	H10	H11	H12	H13	H14	H15
I09	I10	I11	I12	I13	I14	I15
J09	J10	J11	J12	J13		
K09	K10	K11				
L09	L10	L11	L12			
M09	M10	M11	M12	M13		

This map is for general information only and should not be used for site specific planning. Data was collected from a wide range of local, state, and federal GIS databases "as is." Westchester County assumes no liability to any party for any loss or damage caused by errors or omissions resulting from negligence, accident or any other cause.



Westchester County Board of Legislators
Andrew J. Span, Westchester County Executive



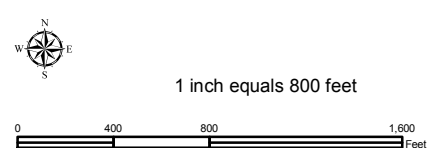
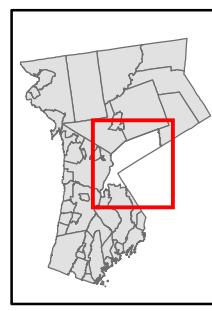
Natural Resource Inventory

Town of North Castle

Map # H12

TILE INDEX

G09	G10	G11	G12	G13	G14	G15
H09	H10	H11	H12	H13	H14	H15
I09	I10	I11	I12	I13	I14	I15
J09	J10	J11	J12	J13		
K09	K10	K11				
L09	L10	L11	L12			
M09	M10	M11	M12	M13		



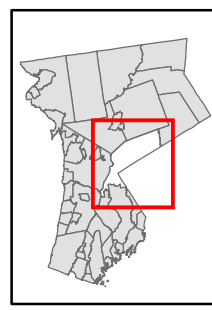
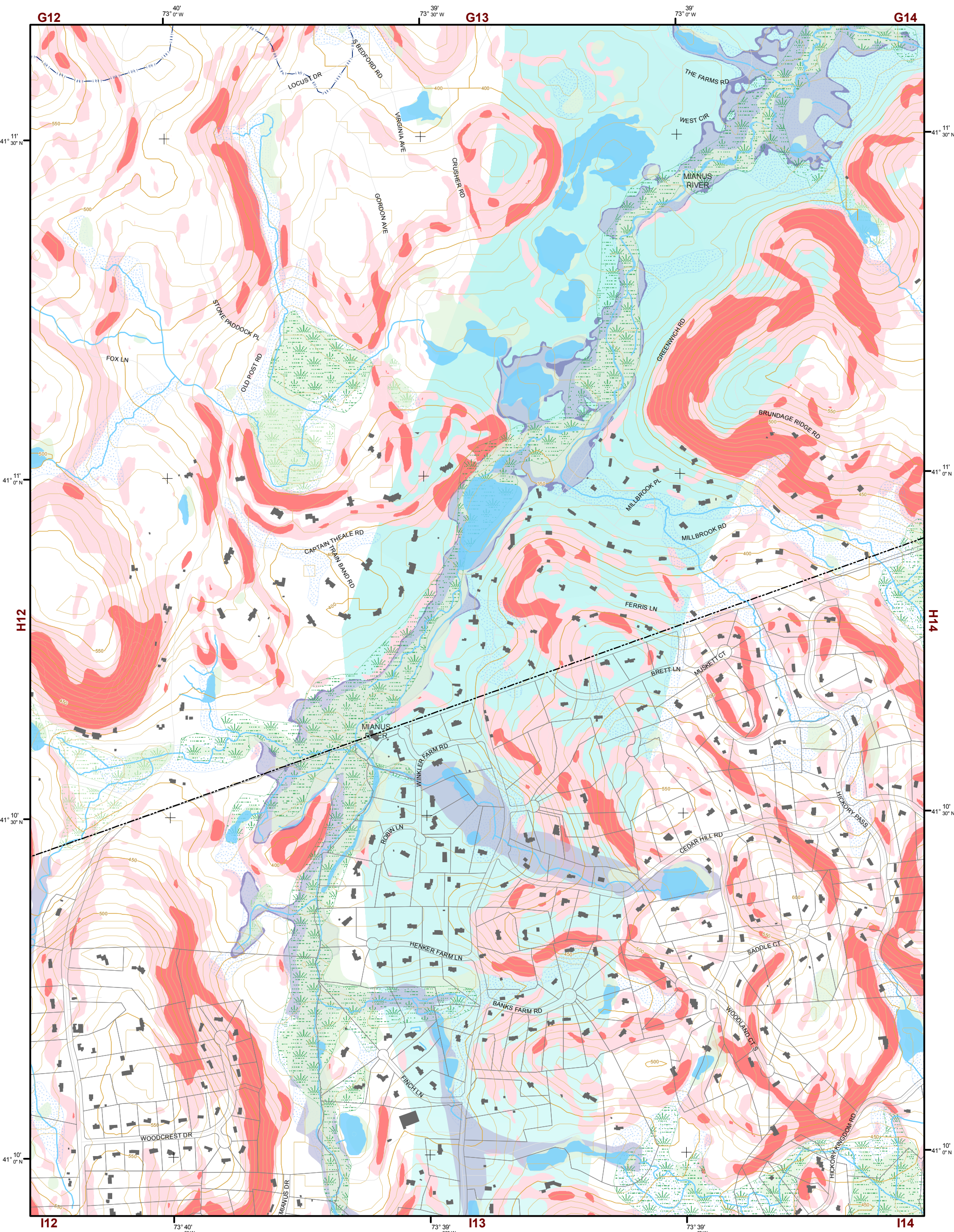
Legend

- 10' TOPO
- 50' TOPO
- Streams
- Lakes, Ponds or Reservoirs
- Aquifer
- Drainage Divides
- Hydric Soils
- Municipal Boundaries
- Tax Parcels
- Buildings
- Slope 15% - 25%
- Slope 25% and Over
- NYSDEC Wetlands Greater than 12.4 acres
- NYSDEC Wetlands Less than 12.4 acres
- Floodplains 100
- Floodplains 500
- National Wetlands Inventory

This map is for general information only and should not be used for site specific planning. Data was collected from a wide range of local, state, and federal GIS databases "as is." Westchester County assumes no liability to any party for any loss or damage caused by errors or omissions resulting from negligence, accident or any other cause.



Westchester County Board of Legislators
 Andrew J. Span, Westchester County Executive



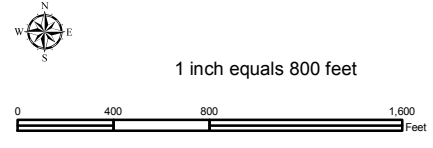
Natural Resource Inventory

Town of North Castle

Map # H13

TILE INDEX

G09	G10	G11	G12	G13	G14	G15
H09	H10	H11	H12	H13	H14	H15
I09	I10	I11	I12	I13	I14	I15
J09	J10	J11	J12	J13		
K09	K10	K11				
L09	L10	L11	L12			
M09	M10	M11	M12	M13		



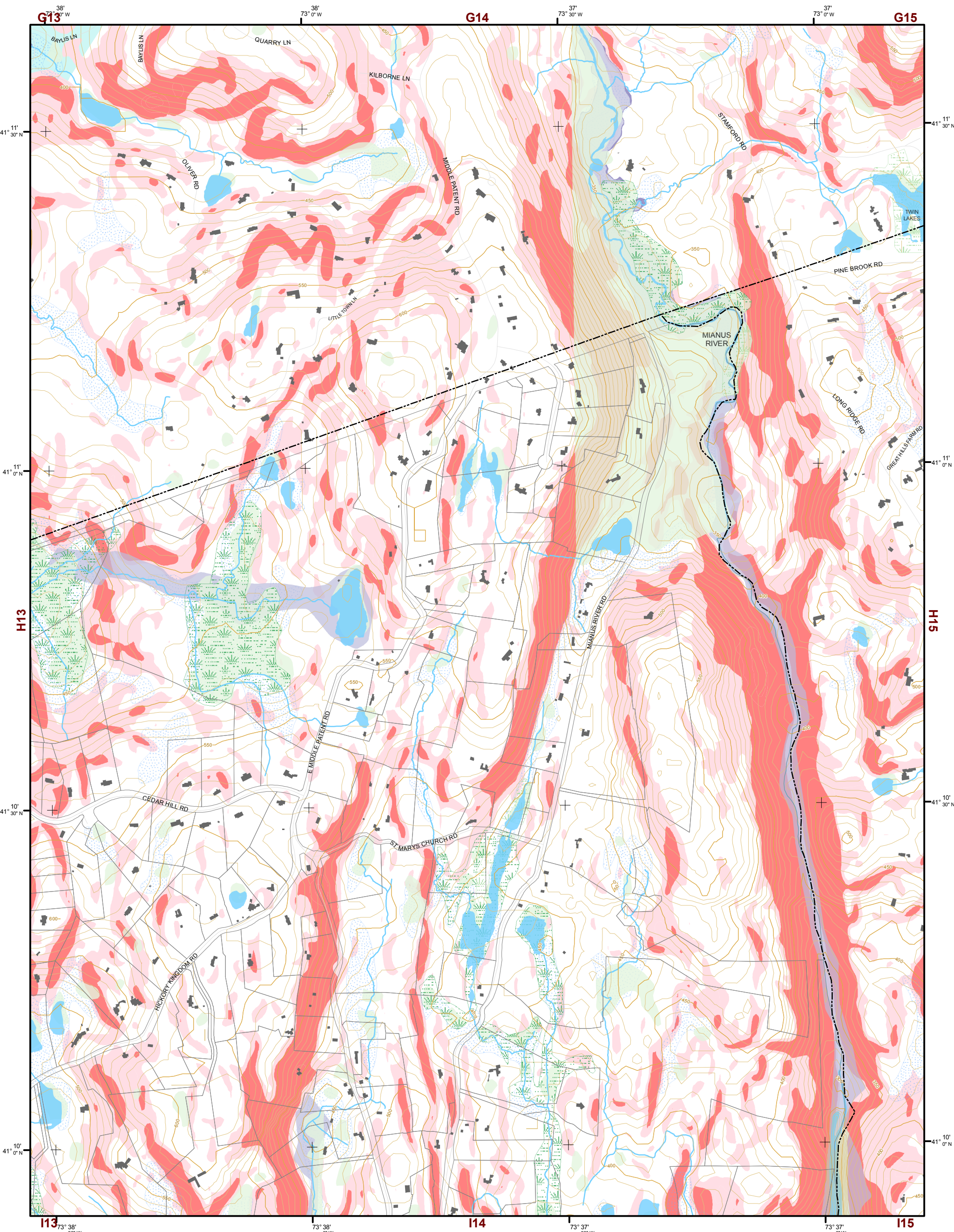
Legend

- 10' TOPO
- 50' TOPO
- Streams
- Lakes, Ponds or Reservoirs
- Aquifer
- Drainage Divides
- Hydric Soils
- Municipal Boundaries
- Tax Parcels
- Buildings
- Slope 15% - 25%
- Slope 25% and Over
- National Wetlands Inventory
- NYSDEC Wetlands Greater than 12.4 acres
- NYSDEC Wetlands Less than 12.4 acres
- Floodplains 100
- Floodplains 500

This map is for general information only and should not be used for site specific planning. Data was collected from a wide range of local, state, and federal GIS databases "as is." Westchester County assumes no liability to any party for any loss or damage caused by errors or omissions resulting from negligence, accident or any other cause.



Westchester County Board of Legislators
Andrew J. Spano, Westchester County Executive



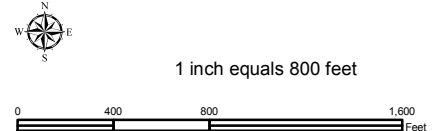
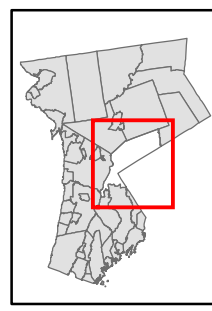
Natural Resource Inventory

Town of North Castle

Map # H14

TILE INDEX

G09	G10	G11	G12	G13	G14	G15
H09	H10	H11	H12	H13	H14	H15
I09	I10	I11	I12	I13	I14	I15
J09	J10	J11	J12	J13		
K09	K10	K11				
L09	L10	L11	L12			
M09	M10	M11	M12	M13		



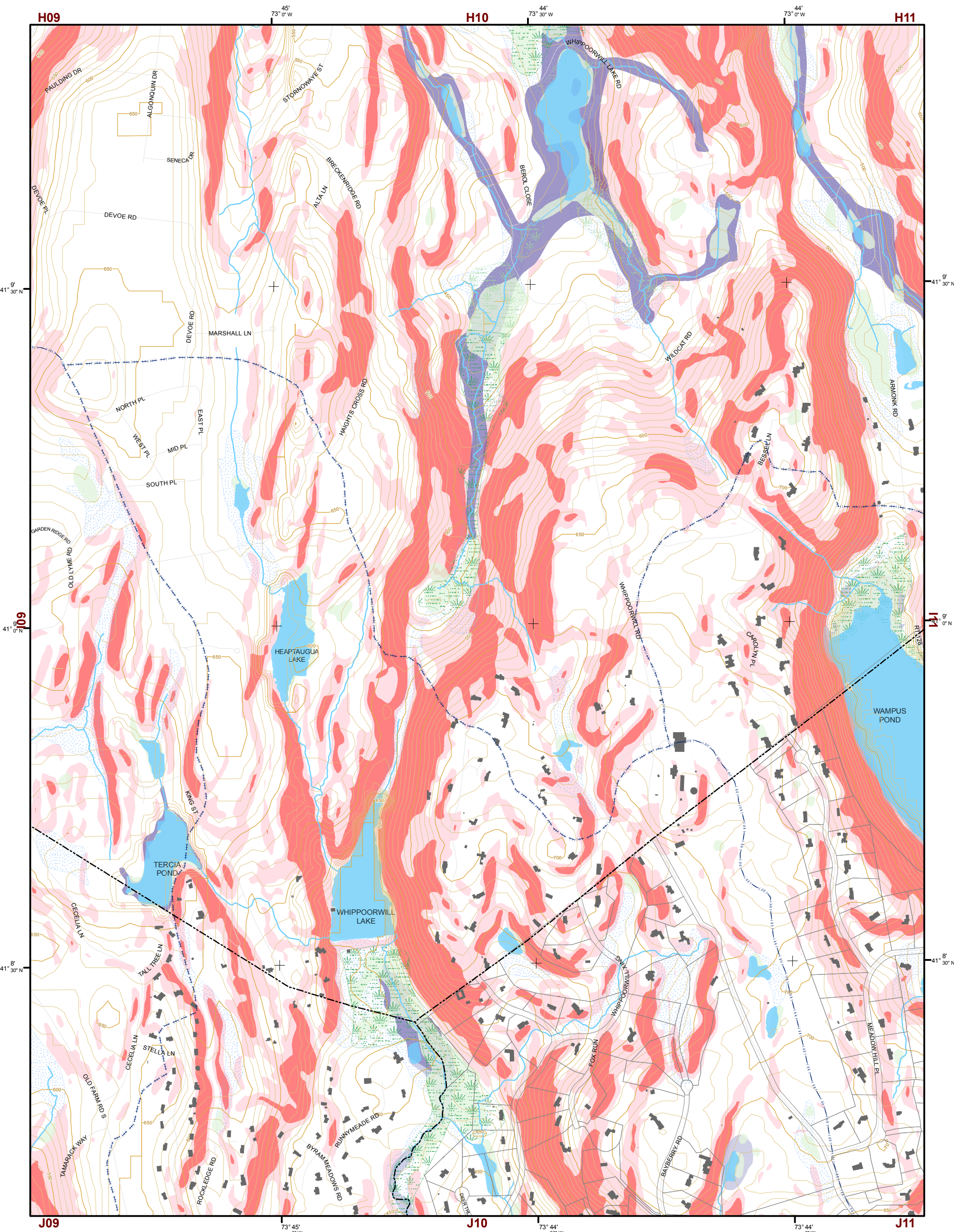
Legend

- 10' TOPO
- 50' TOPO
- Streams
- Lakes, Ponds or Reservoirs
- Aquifer
- Drainage Divides
- Hydric Soils
- Municipal Boundaries
- Tax Parcels
- Buildings
- Slope 15% - 25%
- Slope 25% and Over
- NYSDEC Wetlands Greater than 12.4 acres
- NYSDEC Wetlands Less than 12.4 acres
- Floodplains 100
- Floodplains 500
- National Wetlands Inventory

This map is for general information only and should not be used for site specific planning. Data was collected from a wide range of local, state, and federal GIS databases "as is." Westchester County assumes no liability to any party for any loss or damage caused by errors or omissions resulting from negligence, accident or any other cause.



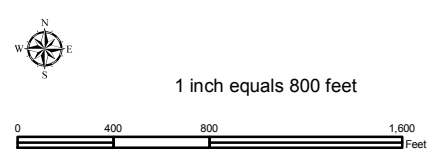
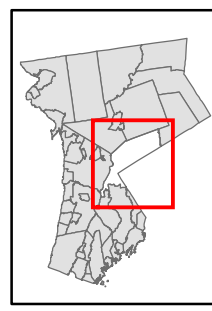
Westchester County Board of Legislators
Andrew J. Spano, Westchester County Executive



Natural Resource Inventory

Town of North Castle

Map # I10



- Legend**
- 10' TOPO
 - 50' TOPO
 - Streams
 - Lakes, Ponds or Reservoirs
 - Aquifer
 - Drainage Divides
 - Hydric Soils
 - Municipal Boundaries
 - Tax Parcels
 - Buildings
 - Slope
 - 15% - 25%
 - 25% and Over
 - NYSDEC Wetlands
 - Greater than 12.4 acres
 - Less than 12.4 acres
 - Floodplains
 - 100
 - 500
 - National Wetlands Inventory

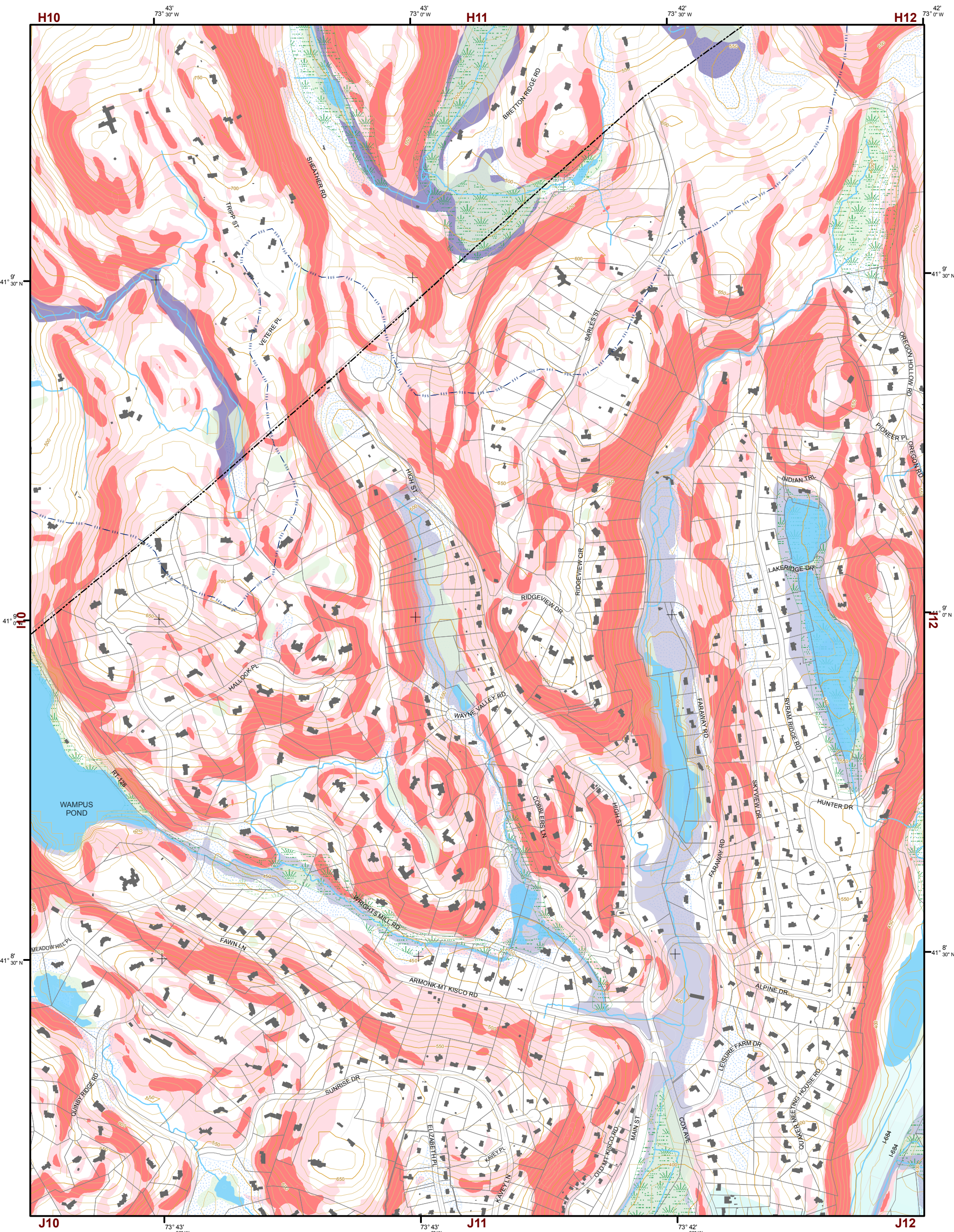
TILE INDEX

G09	G10	G11	G12	G13	G14	G15
H09	H10	H11	H12	H13	H14	H15
I09	I10	I11	I12	I13	I14	I15
J09	J10	J11	J12	J13		
K09	K10	K11				
L09	L10	L11	L12			
M09	M10	M11	M12	M13		

This map is for general information only and should not be used for site specific planning. Data was collected from a wide range of local, state, and federal GIS databases "as is." Westchester County assumes no liability to any party for any loss or damage caused by errors or omissions resulting from negligence, accident or any other cause.

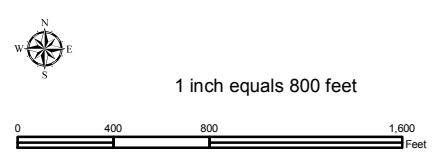
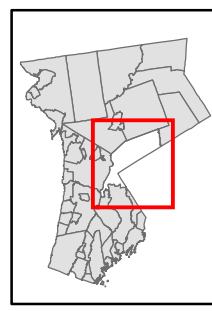


Westchester County Board of Legislators



Natural Resource Inventory Map # I11

Town of North Castle



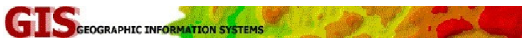
Legend

- 10' TOPO
- 50' TOPO
- Streams
- Lakes, Ponds or Reservoirs
- Aquifer
- Drainage Divides
- Hydric Soils
- Municipal Boundaries
- Tax Parcels
- Buildings
- Slope**
- 15% - 25%
- 25% and Over
- NYSDEC Wetlands**
- Greater than 12.4 acres
- Less than 12.4 acres
- Floodplains**
- 100
- 500
- National Wetlands Inventory

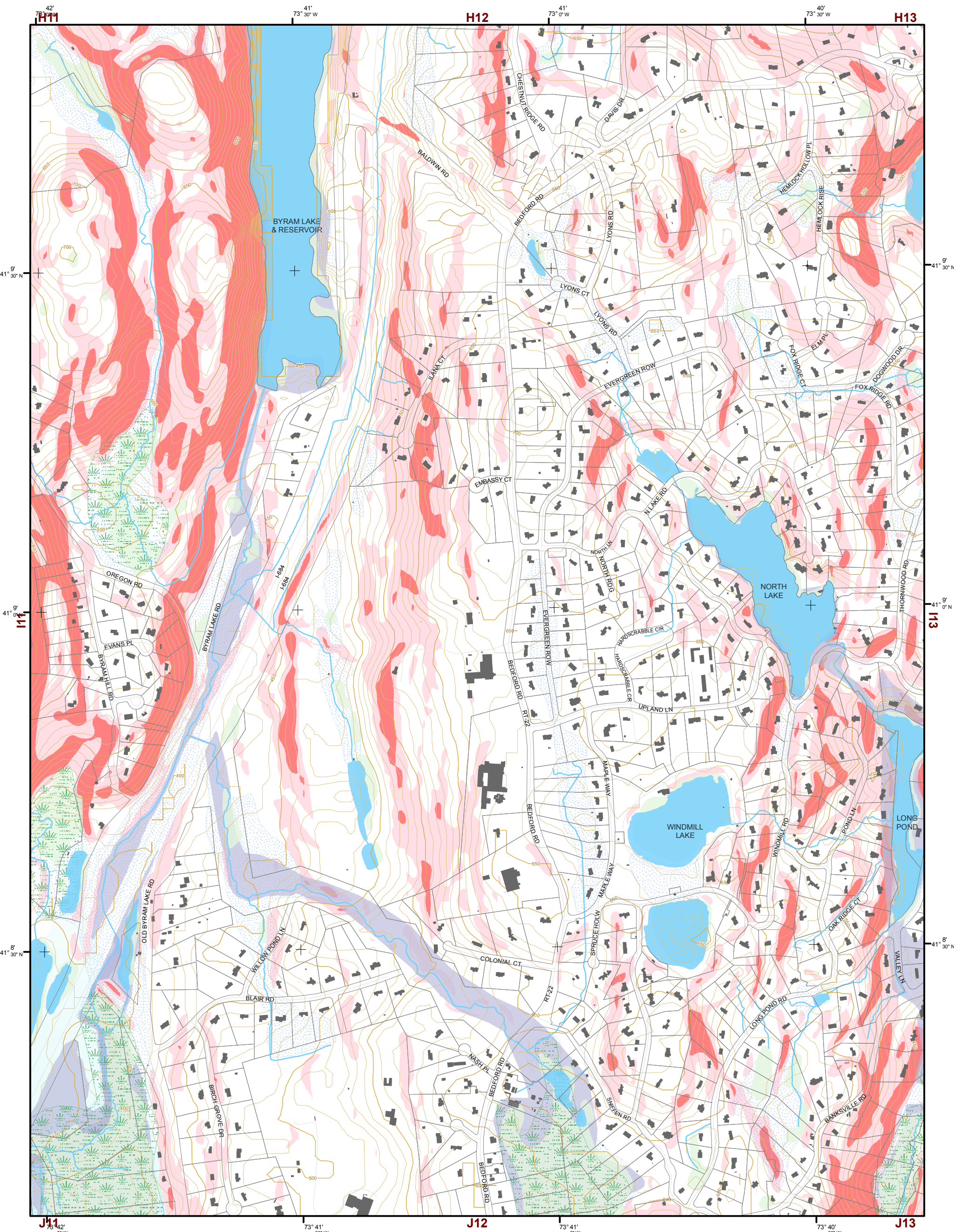
TILE INDEX

G09	G10	G11	G12	G13	G14	G15
H09	H10	H11	H12	H13	H14	H15
I09	I10	I11	I12	I13	I14	I15
J09	J10	J11	J12	J13		
K09	K10	K11				
L09	L10	L11	L12			
M09	M10	M11	M12	M13		

This map is for general information only and should not be used for site specific planning. Data was collected from a wide range of local, state, and federal GIS databases "as is." Westchester County assumes no liability to any party for any loss or damage caused by errors or omissions resulting from negligence, accident or any other cause.



Westchester County Board of Legislators
Andrew J. Span, Westchester County Executive



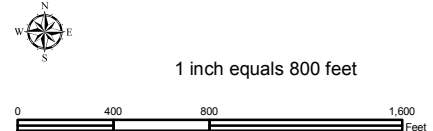
Natural Resource Inventory

Town of North Castle

Map # I12

TILE INDEX

G09	G10	G11	G12	G13	G14	G15
H09	H10	H11	H12	H13	H14	H15
I09	I10	I11	I12	I13	I14	I15
J09	J10	J11	J12	J13		
K09	K10	K11				
L09	L10	L11	L12			
M09	M10	M11	M12	M13		

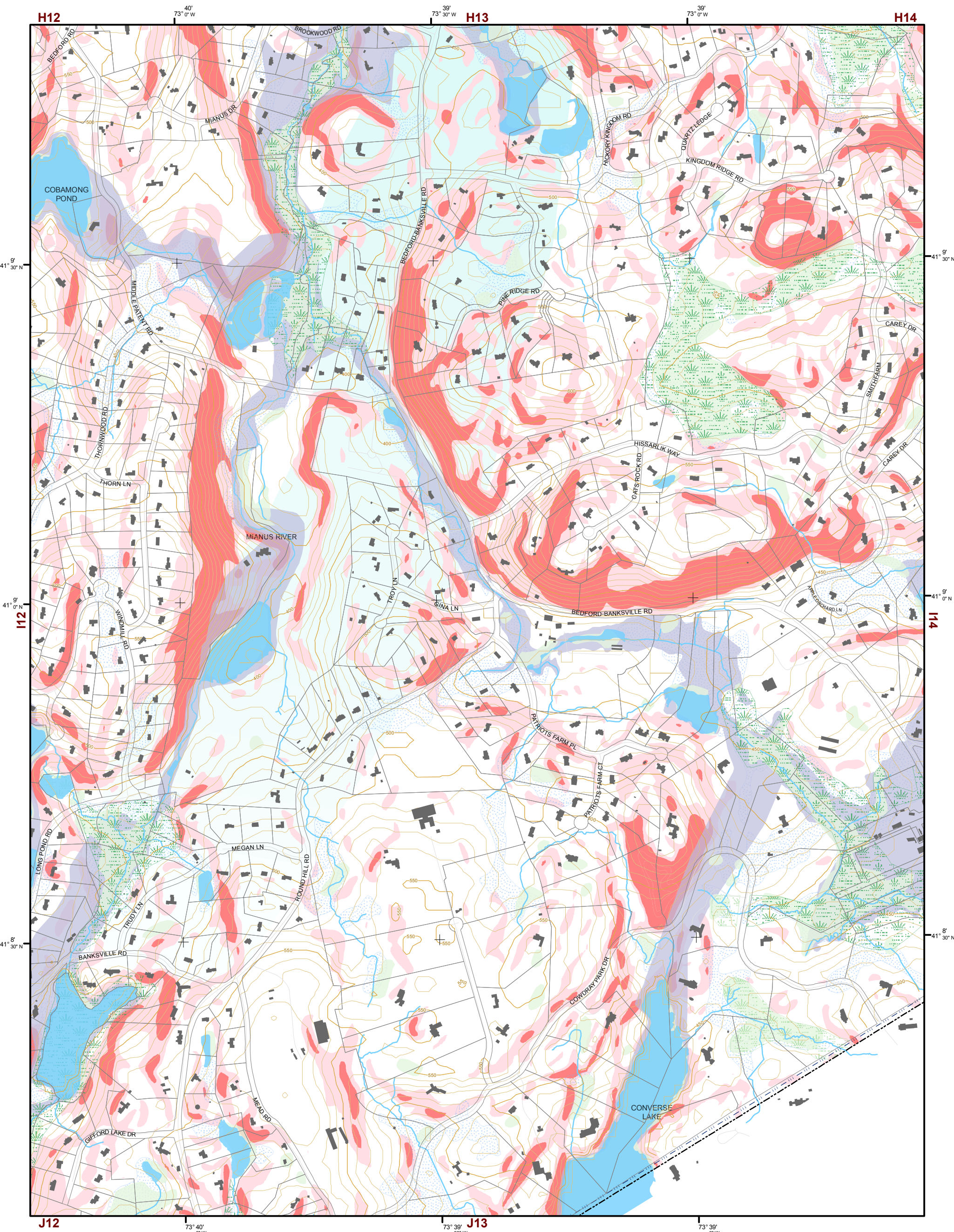


Legend

- 10' TOPO
- 50' TOPO
- Streams
- Lakes, Ponds or Reservoirs
- Aquifer
- Drainage Divides
- Hydric Soils
- Municipal Boundaries
- Tax Parcels
- Buildings
- Slope 15% - 25%
- Slope 25% and Over
- NYSDEC Wetlands Greater than 12.4 acres
- NYSDEC Wetlands Less than 12.4 acres
- Floodplains 100
- Floodplains 500
- National Wetlands Inventory

This map is for general information only and should not be used for site specific planning. Data was collected from a wide range of local, state, and federal GIS databases "as is." Westchester County assumes no liability to any party for any loss or damage caused by errors or omissions resulting from negligence, accident or any other cause.

GIS GEOGRAPHIC INFORMATION SYSTEMS



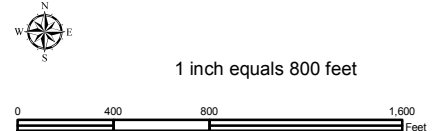
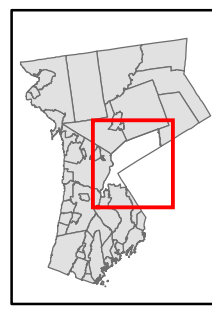
Natural Resource Inventory

Town of North Castle

Map # I13

TILE INDEX

G09	G10	G11	G12	G13	G14	G15
H09	H10	H11	H12	H13	H14	H15
I09	I10	I11	I12	I13	I14	I15
J09	J10	J11	J12	J13		
K09	K10	K11				
L09	L10	L11	L12			
M09	M10	M11	M12	M13		



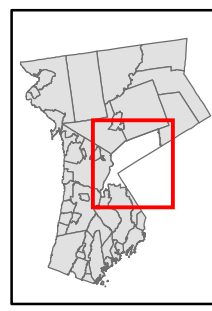
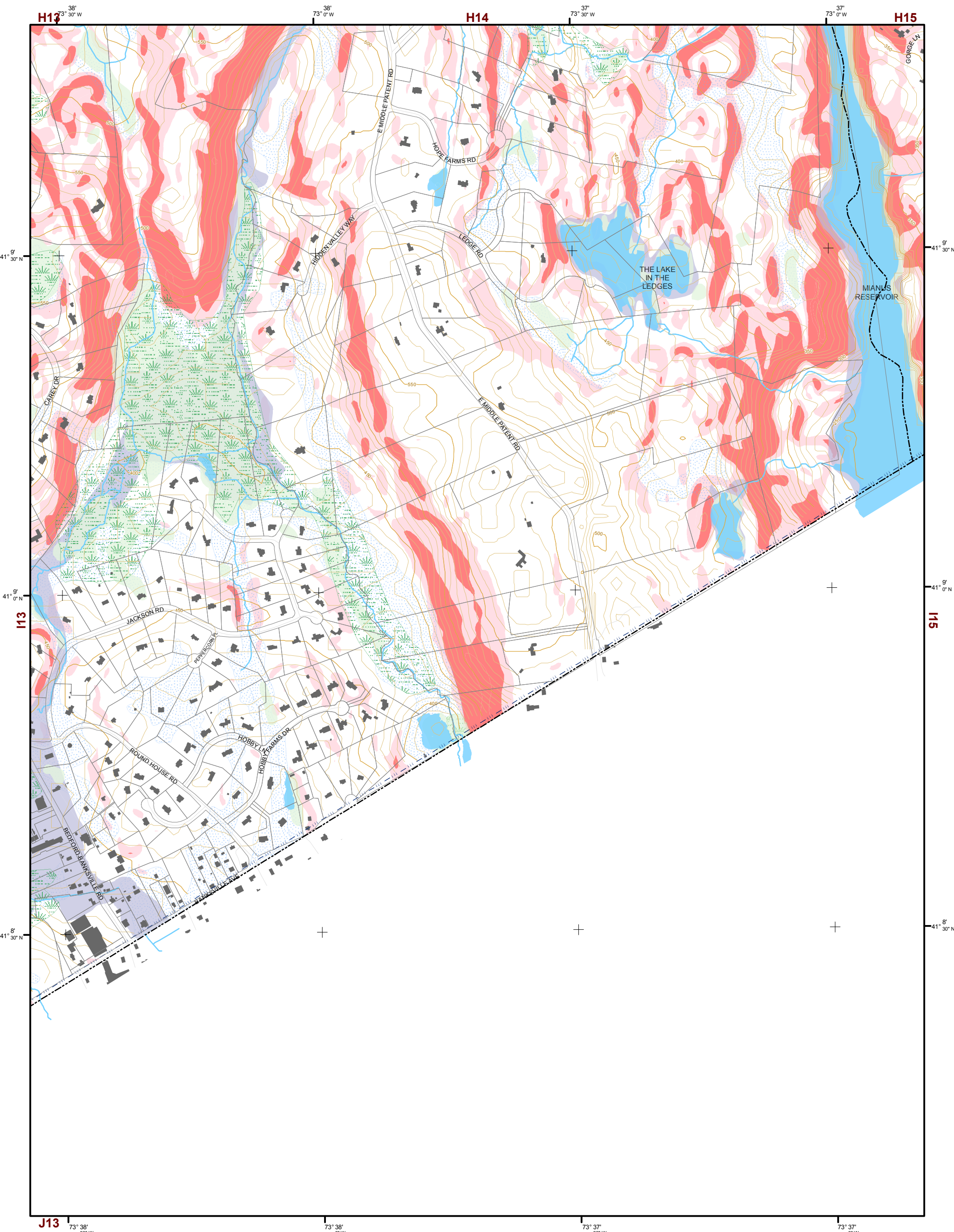
Legend

- 10' TOPO
- 50' TOPO
- Streams
- Lakes, Ponds or Reservoirs
- Aquifer
- Drainage Divides
- Hydric Soils
- Municipal Boundaries
- Tax Parcels
- Buildings
- Slope 15% - 25%
- Slope 25% and Over
- NYSDEC Wetlands Greater than 12.4 acres
- NYSDEC Wetlands Less than 12.4 acres
- Floodplains 100
- Floodplains 500
- National Wetlands Inventory

This map is for general information only and should not be used for site specific planning. Data was collected from a wide range of local, state, and federal GIS databases "as is." Westchester County assumes no liability to any party for any loss or damage caused by errors or omissions resulting from negligence, accident or any other cause.



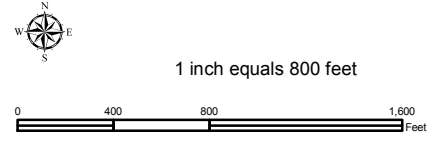
Westchester County Board of Legislators
Andrew J. Span, Westchester County Executive



Natural Resource Inventory

Town of North Castle

Map # I14



Legend

- 10' TOPO
- 50' TOPO
- Streams
- Lakes, Ponds or Reservoirs
- Aquifer
- Drainage Divides
- Hydric Soils
- Municipal Boundaries
- Tax Parcels
- Buildings
- Slope**
- 15% - 25%
- 25% and Over
- NYSDEC Wetlands**
- Greater than 12.4 acres
- Less than 12.4 acres
- Floodplains**
- 100
- 500
- National Wetlands Inventory

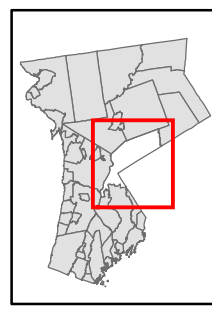
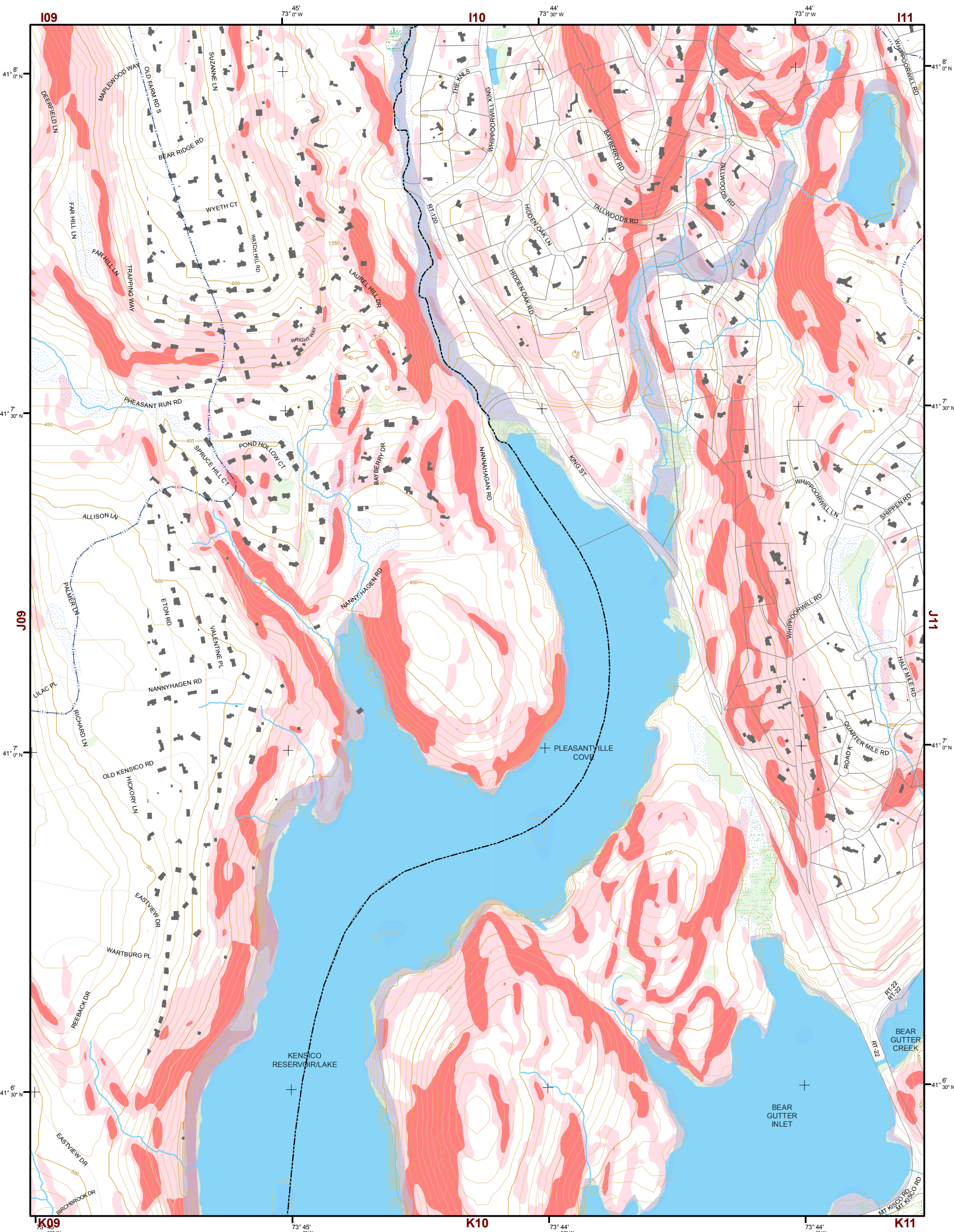
TILE INDEX

G09	G10	G11	G12	G13	G14	G15
H09	H10	H11	H12	H13	H14	H15
I09	I10	I11	I12	I13	I14	I15
J09	J10	J11	J12	J13		
K09	K10	K11				
L09	L10	L11	L12			
M09	M10	M11	M12	M13		

This map is for general information only and should not be used for site specific planning. Data was collected from a wide range of local, state, and federal GIS databases "as is." Westchester County assumes no liability to any party for any loss or damage caused by errors or omissions resulting from negligence, accident or any other cause.



Westchester County Board of Legislators
Andrew J. Span, Westchester County Executive

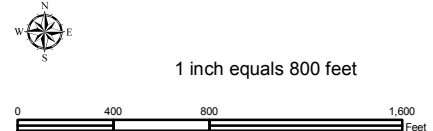


Natural Resource Inventory

Town of North Castle

Map # J10

TILE INDEX

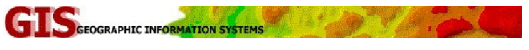


Legend

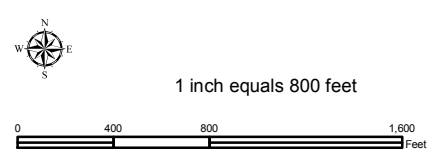
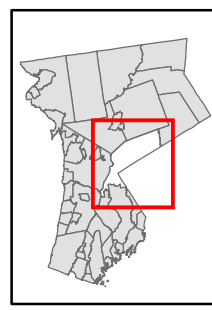
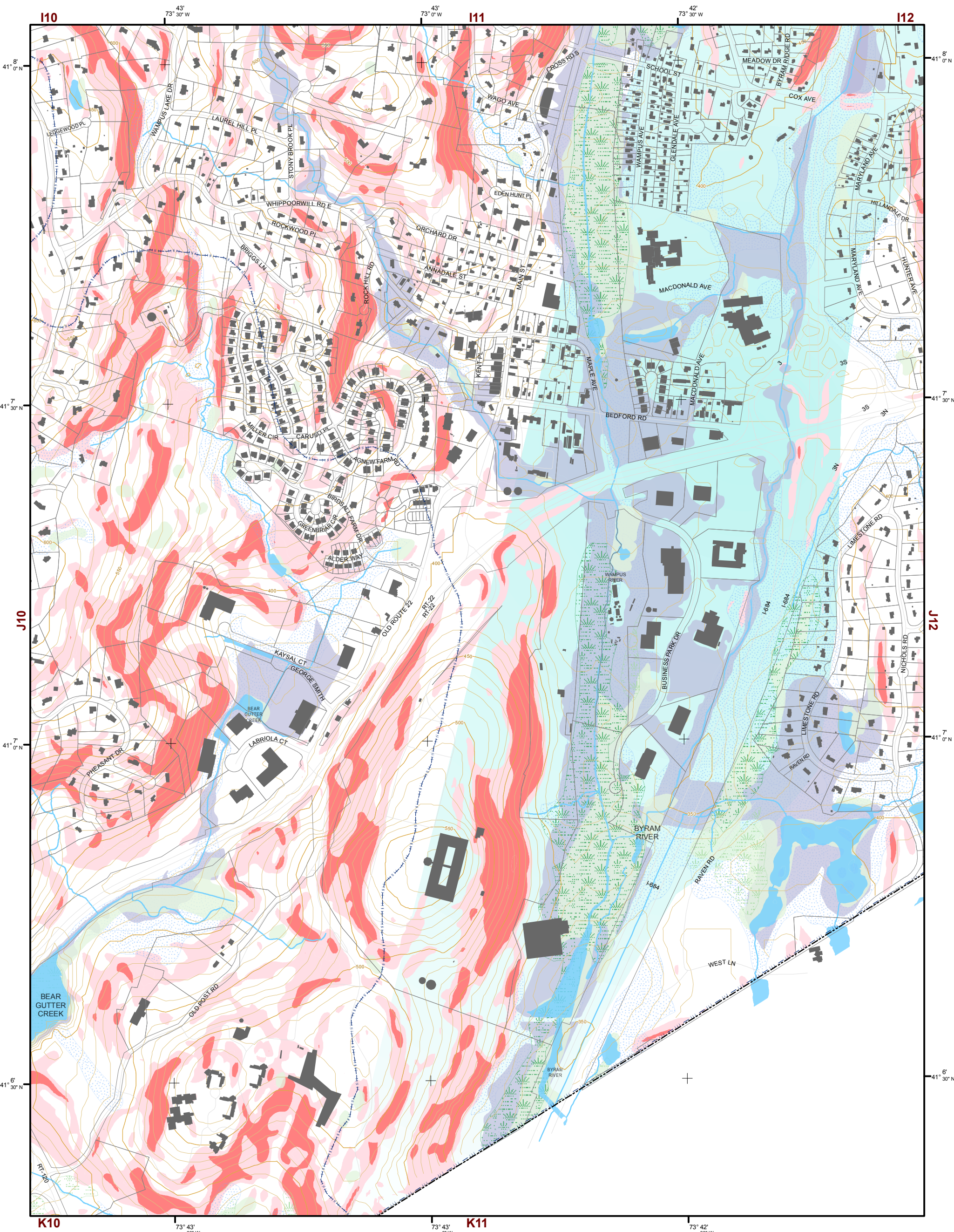
- 10' TOPO
- 50' TOPO
- Streams
- Lakes, Ponds or Reservoirs
- Aquifer
- Drainage Divides
- Hydric Soils
- Municipal Boundaries
- Tax Parcels
- Buildings
- Slope 15% - 25%
- Slope 25% and Over
- National Wetlands Inventory
- Greater than 12.4 acres
- Less than 12.4 acres
- Floodplains 100
- Floodplains 500

G09	G10	G11	G12	G13	G14	G15
H09	H10	H11	H12	H13	H14	H15
I09	I10	I11	I12	I13	I14	I15
J09	J10	J11	J12	J13		
K09	K10	K11				
L09	L10	L11	L12			
M09	M10	M11	M12	M13		

This map is for general information only and should not be used for site specific planning. Data was collected from a wide range of local, state, and federal GIS databases "as is." Westchester County assumes no liability to any party for any loss or damage caused by errors or omissions resulting from negligence, accident or any other cause.



Westchester County Board of Legislators
 Andrew J. Span, Westchester County Executive



Natural Resource Inventory

Town of North Castle

Map # J11

Legend

- 10' TOPO
- 50' TOPO
- Streams
- Lakes, Ponds or Reservoirs
- Aquifer
- Drainage Divides
- Hydric Soils
- Municipal Boundaries
- Tax Parcels
- Buildings
- Slope**
 - 15% - 25%
 - 25% and Over
- NYSDEC Wetlands**
 - Greater than 12.4 acres
 - Less than 12.4 acres
- Floodplains**
 - 100
 - 500
- National Wetlands Inventory

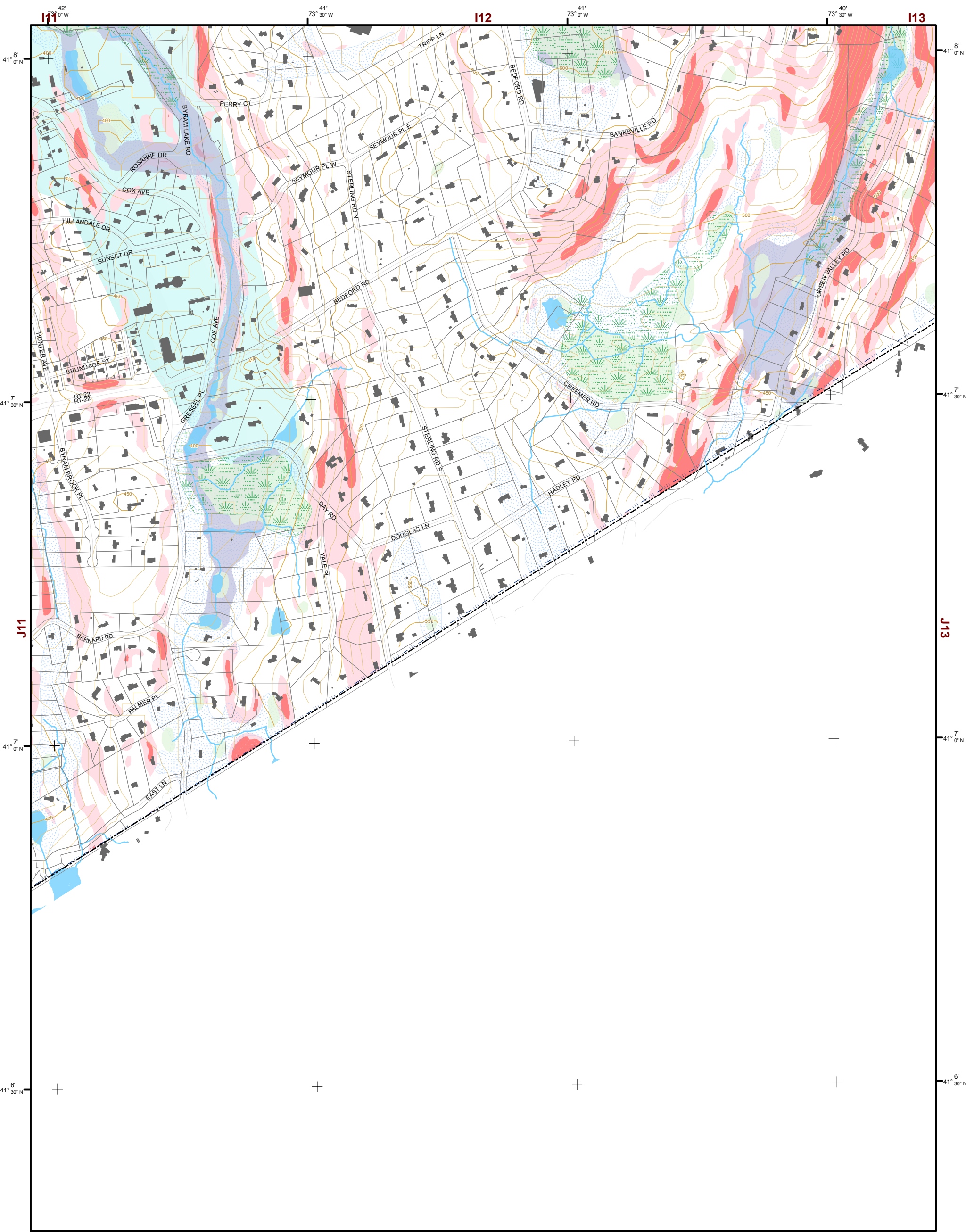
TILE INDEX

G09	G10	G11	G12	G13	G14	G15
H09	H10	H11	H12	H13	H14	H15
I09	I10	I11	I12	I13	I14	I15
J09	J10	J11	J12	J13		
K09	K10	K11				
L09	L10	L11	L12			
M09	M10	M11	M12	M13		

This map is for general information only and should not be used for site specific planning. Data was collected from a wide range of local, state, and federal GIS databases "as is." Westchester County assumes no liability to any party for any loss or damage caused by errors or omissions resulting from negligence, accident or any other cause.



Westchester County Board of Legislators
Andrew J. Span, Westchester County Executive



Natural Resource Inventory

Town of North Castle

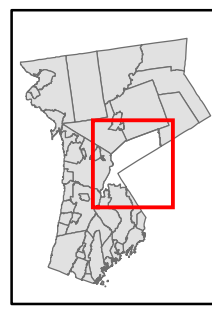
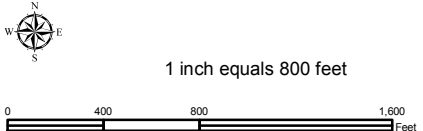
Map # J12

TILE INDEX

G09	G10	G11	G12	G13	G14	G15
H09	H10	H11	H12	H13	H14	H15
I09	I10	I11	I12	I13	I14	I15
J09	J10	J11	J12	J13		
K09	K10	K11				
L09	L10	L11	L12			
M09	M10	M11	M12	M13		

Legend

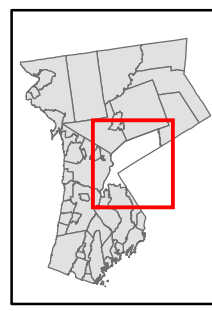
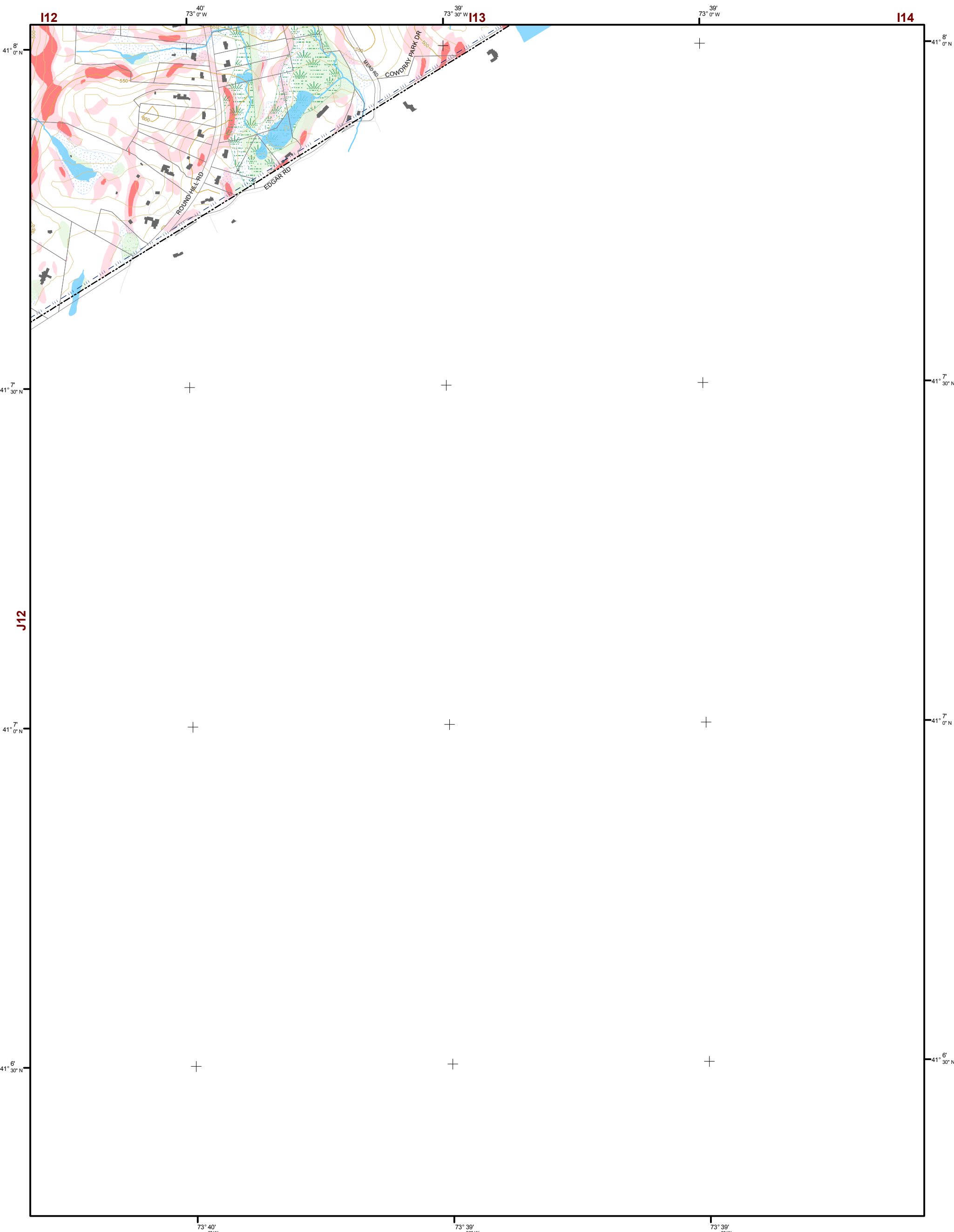
- 10' TOPO
- 50' TOPO
- Streams
- Lakes, Ponds or Reservoirs
- Aquifer
- Drainage Divides
- Hydric Soils
- Municipal Boundaries
- Tax Parcels
- Buildings
- Slope**
 - 15% - 25%
 - 25% and Over
- NYSDEC Wetlands**
 - Greater than 12.4 acres
 - Less than 12.4 acres
- Floodplains**
 - 100
 - 500
- National Wetlands Inventory



This map is for general information only and should not be used for site specific planning. Data was collected from a wide range of local, state, and federal GIS databases "as is." Westchester County assumes no liability to any party for any loss or damage caused by errors or omissions resulting from negligence, accident or any other cause.



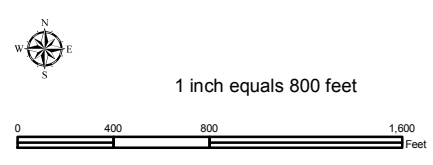
Westchester County Board of Legislators
Andrew J. Span, Westchester County Executive



Natural Resource Inventory

Town of North Castle

Map # J13



Legend

- 10' TOPO
- 50' TOPO
- Streams
- Lakes, Ponds or Reservoirs
- Aquifer
- Drainage Divides
- Hydric Soils
- Municipal Boundaries
- Tax Parcels
- Buildings
- Slope**
 - 15% - 25%
 - 25% and Over
- NYSDEC Wetlands**
 - Greater than 12.4 acres
 - Less than 12.4 acres
- Floodplains**
 - 100
 - 500
- National Wetlands Inventory

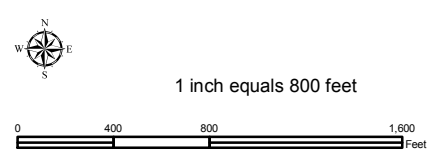
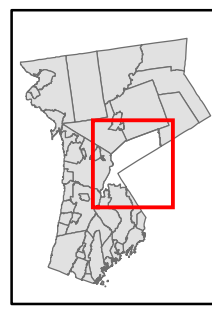
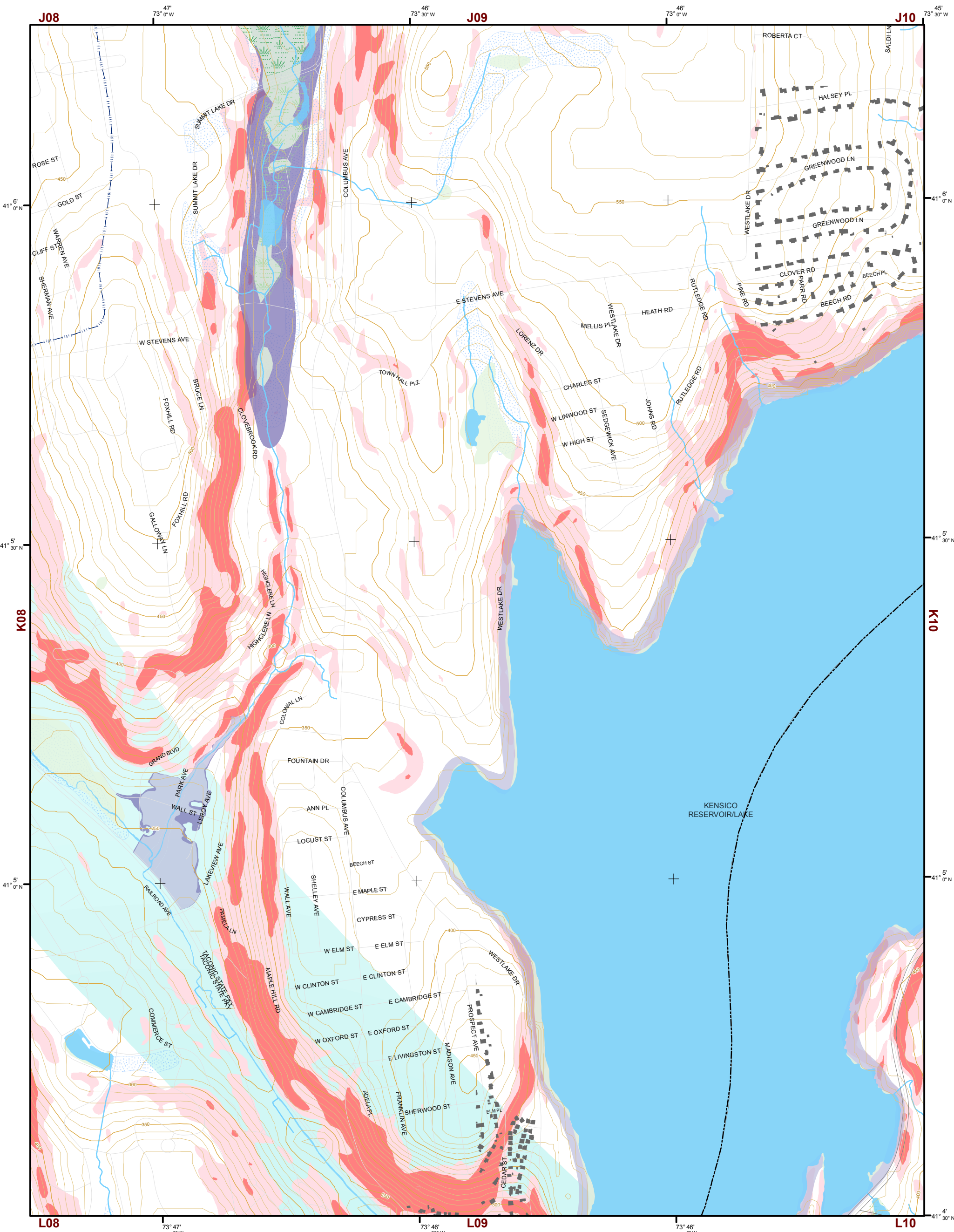
TILE INDEX

G09	G10	G11	G12	G13	G14	G15
H09	H10	H11	H12	H13	H14	H15
I09	I10	I11	I12	I13	I14	I15
J09	J10	J11	J12	J13		
K09	K10	K11				
L09	L10	L11	L12			
M09	M10	M11	M12	M13		

This map is for general information only and should not be used for site specific planning. Data was collected from a wide range of local, state, and federal GIS databases "as is." Westchester County assumes no liability to any party for any loss or damage caused by errors or omissions resulting from negligence, accident or any other cause.



Westchester
County Board of Legislators
Andrew J. Spano, Westchester County Executive



Natural Resource Inventory

Town of North Castle

Map # K09

Legend

- 10' TOPO
- 50' TOPO
- Streams
- Lakes, Ponds or Reservoirs
- Aquifer
- Drainage Divides
- Hydric Soils
- Municipal Boundaries
- Tax Parcels
- Buildings
- Slope 15% - 25%
- Slope 25% and Over
- NYSDEC Wetlands Greater than 12.4 acres
- NYSDEC Wetlands Less than 12.4 acres
- Floodplains 100
- Floodplains 500
- National Wetlands Inventory

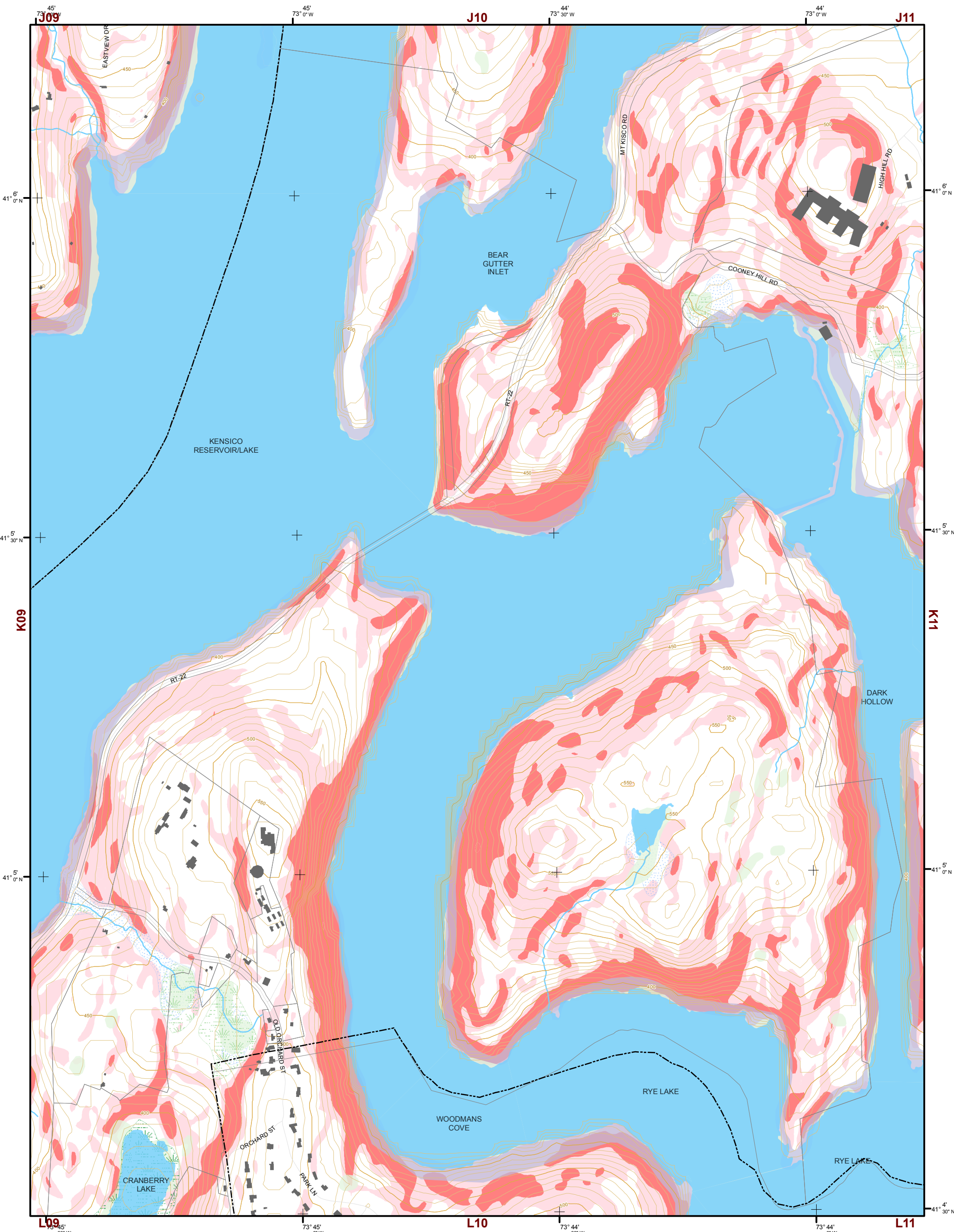
TILE INDEX

G09	G10	G11	G12	G13	G14	G15
H09	H10	H11	H12	H13	H14	H15
I09	I10	I11	I12	I13	I14	I15
J09	J10	J11	J12	J13		
K09	K10	K11				
L09	L10	L11	L12			
M09	M10	M11	M12	M13		

This map is for general information only and should not be used for site specific planning. Data was collected from a wide range of local, state, and federal GIS databases "as is." Westchester County assumes no liability to any party for any loss or damage caused by errors or omissions resulting from negligence, accident or any other cause.



Westchester County Board of Legislators



Natural Resource Inventory

Town of North Castle

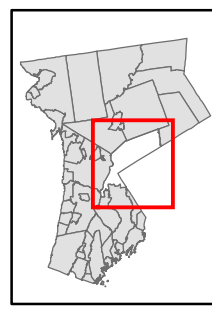
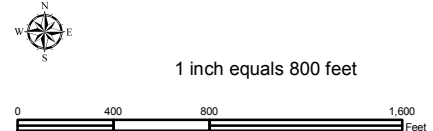
Map # K10

TILE INDEX

G09	G10	G11	G12	G13	G14	G15
H09	H10	H11	H12	H13	H14	H15
I09	I10	I11	I12	I13	I14	I15
J09	J10	J11	J12	J13		
K09	K10	K11				
L09	L10	L11	L12			
M09	M10	M11	M12	M13		

Legend

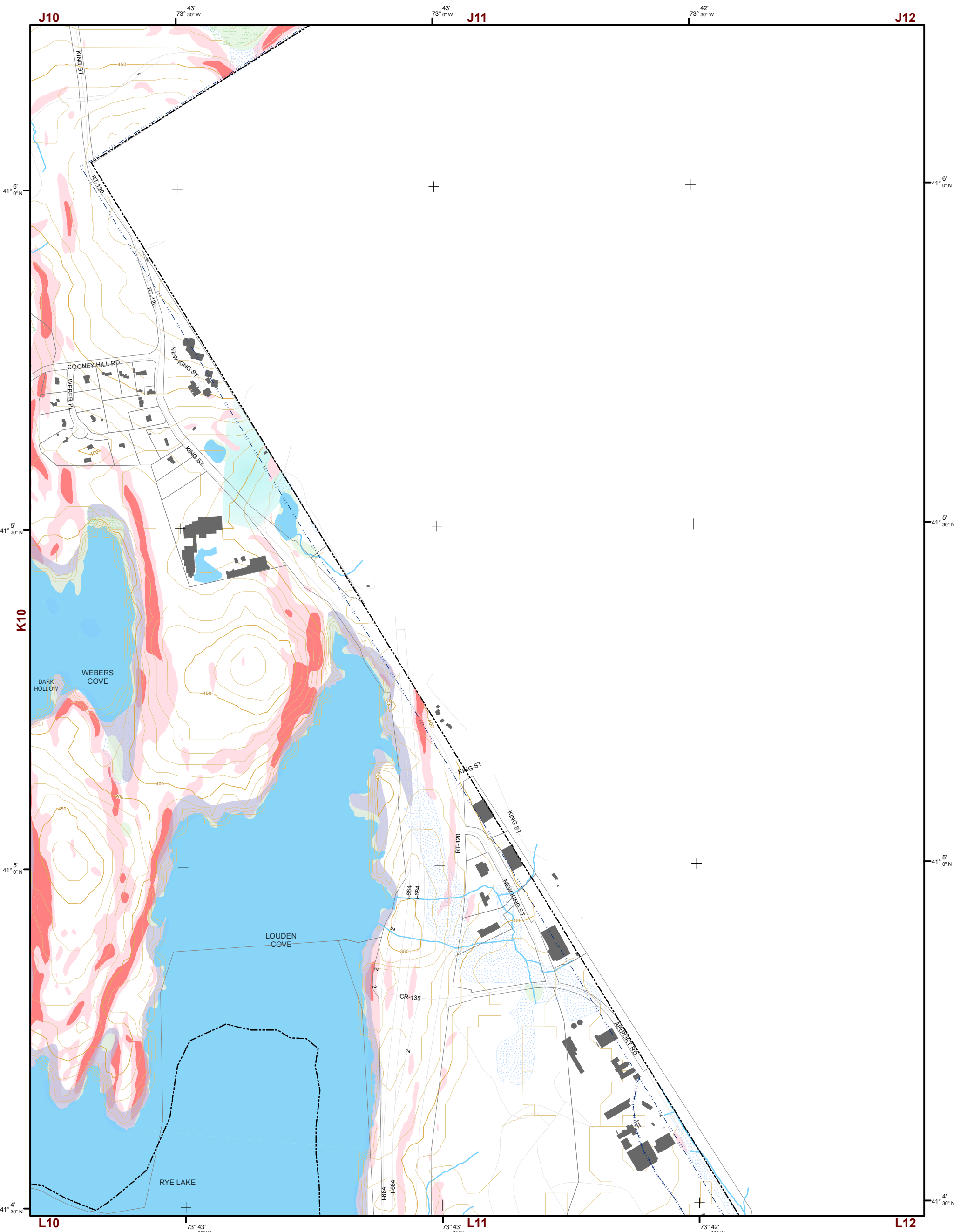
- 10' TOPO
- 50' TOPO
- Streams
- Lakes, Ponds or Reservoirs
- Aquifer
- Drainage Divides
- Hydric Soils
- Municipal Boundaries
- Tax Parcels
- Buildings
- Slope**
 - 15% - 25%
 - 25% and Over
- NYSDEC Wetlands**
 - Greater than 12.4 acres
 - Less than 12.4 acres
- Floodplains**
 - 100
 - 500
- National Wetlands Inventory



This map is for general information only and should not be used for site specific planning. Data was collected from a wide range of local, state, and federal GIS databases "as is." Westchester County assumes no liability to any party for any loss or damage caused by errors or omissions resulting from negligence, accident or any other cause.



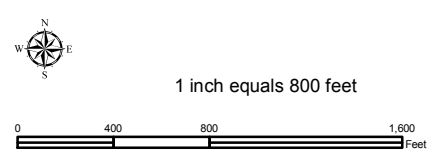
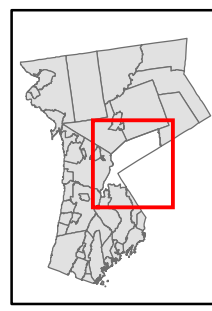
Westchester County Board of Legislators
Andrew J. Span, Westchester County Executive



Natural Resource Inventory

Town of North Castle

Map # K11



Legend

- 10' TOPO
- 50' TOPO
- Streams
- Lakes, Ponds or Reservoirs
- Aquifer
- Drainage Divides
- Hydric Soils
- Municipal Boundaries
- Tax Parcels
- Buildings
- Slope**
- 15% - 25%
- 25% and Over
- NYSDEC Wetlands**
- Greater than 12.4 acres
- Less than 12.4 acres
- Floodplains**
- 100
- 500
- National Wetlands Inventory

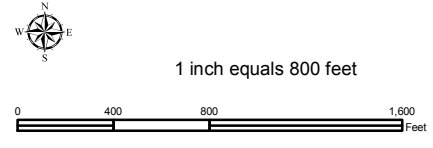
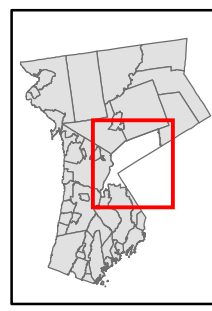
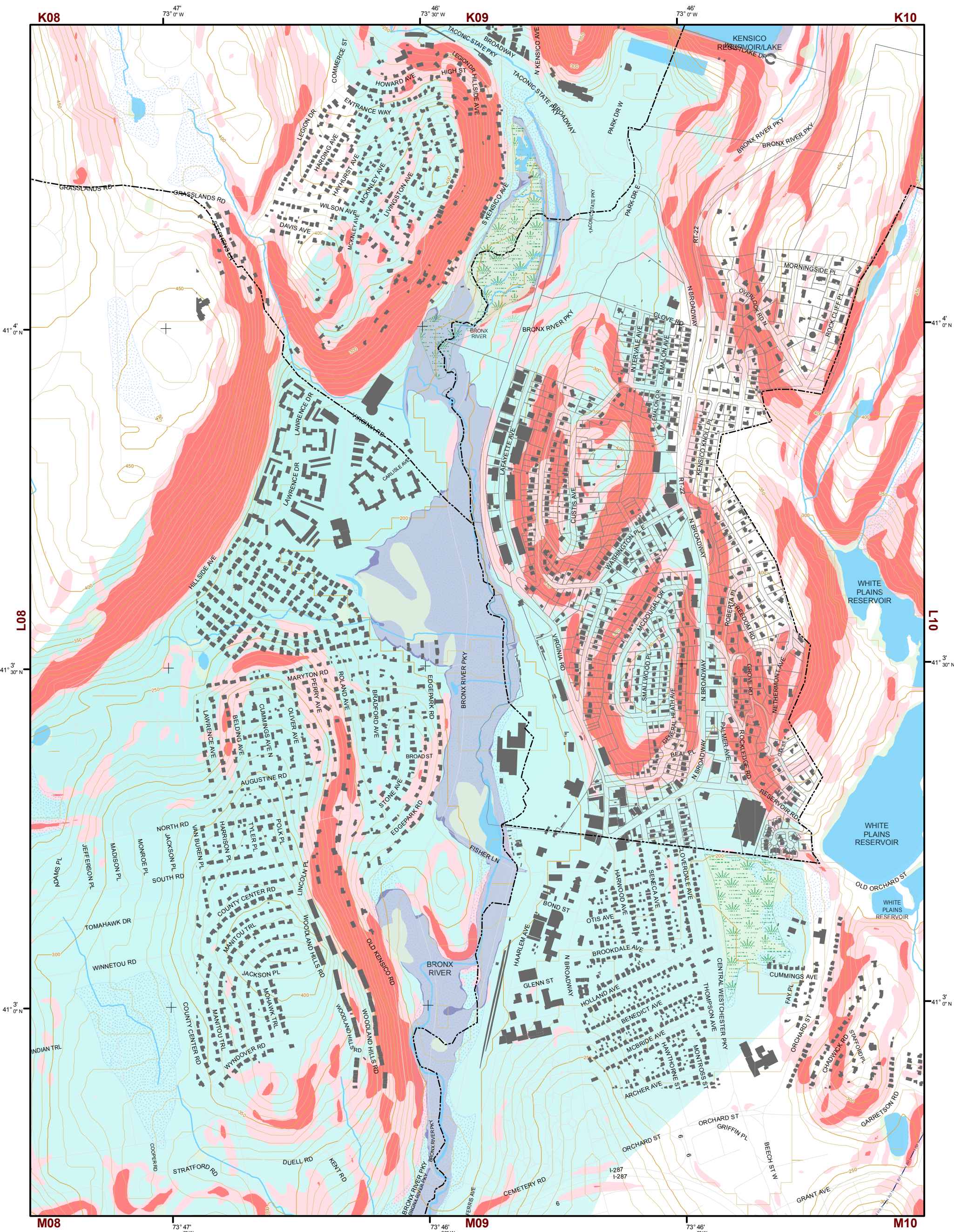
TILE INDEX

G09	G10	G11	G12	G13	G14	G15
H09	H10	H11	H12	H13	H14	H15
I09	I10	I11	I12	I13	I14	I15
J09	J10	J11	J12	J13		
K09	K10	K11				
L09	L10	L11	L12			
M09	M10	M11	M12	M13		

This map is for general information only and should not be used for site specific planning. Data was collected from a wide range of local, state, and federal GIS databases "as is." Westchester County assumes no liability to any party for any loss or damage caused by errors or omissions resulting from negligence, accident or any other cause.



Westchester County Board of Legislators
Andrew J. Span, Westchester County Executive



Natural Resource Inventory

Town of North Castle

Map # L09

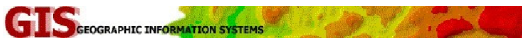
Legend

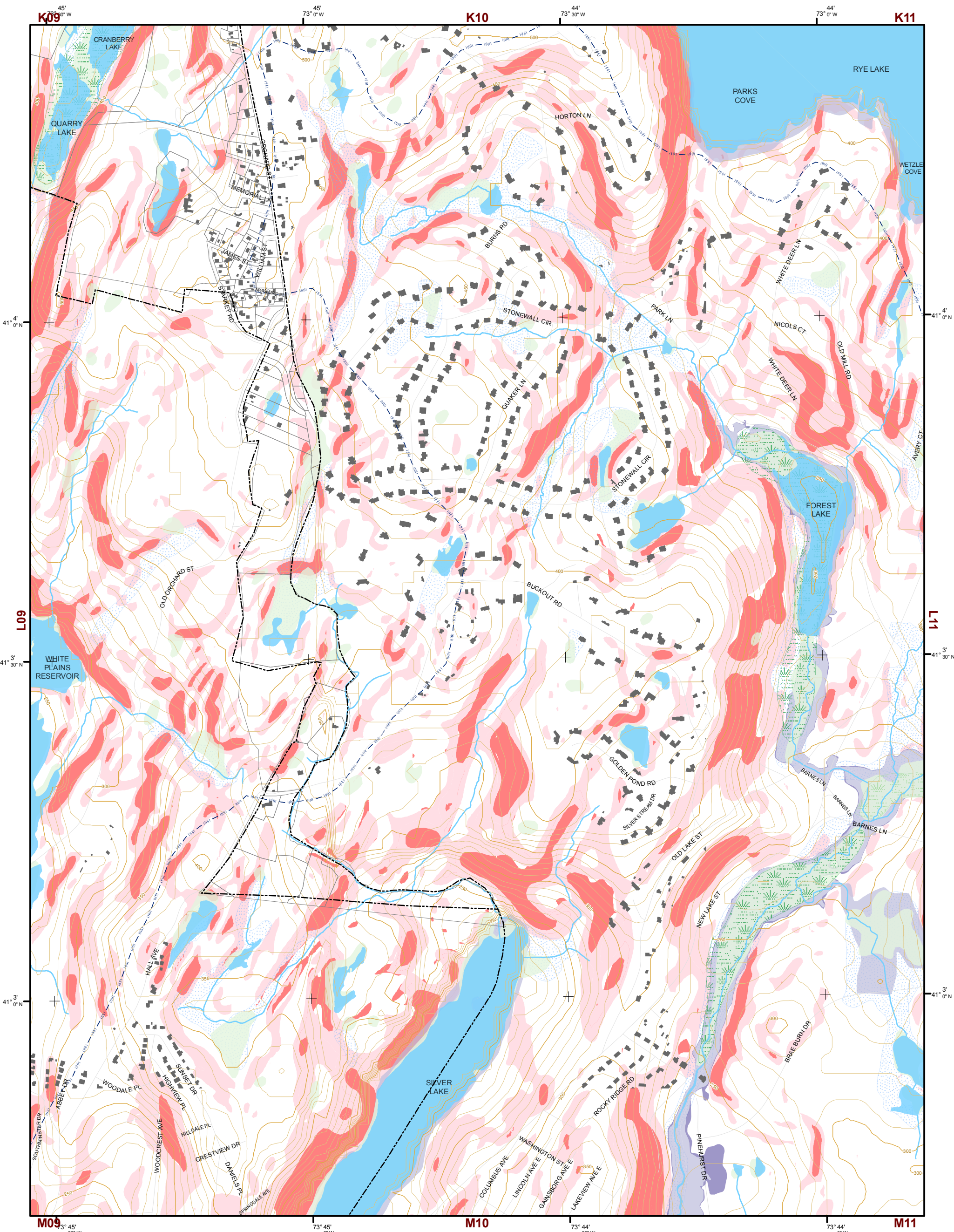
- 10' TOPO
- 50' TOPO
- Streams
- Lakes, Ponds or Reservoirs
- Aquifer
- Drainage Divides
- Hydric Soils
- Municipal Boundaries
- Tax Parcels
- Buildings
- Slope 15% - 25%
- Slope 25% and Over
- NYSDEC Wetlands Greater than 12.4 acres
- NYSDEC Wetlands Less than 12.4 acres
- Floodplains 100
- Floodplains 500
- National Wetlands Inventory

TILE INDEX

G09	G10	G11	G12	G13	G14	G15
H09	H10	H11	H12	H13	H14	H15
I09	I10	I11	I12	I13	I14	I15
J09	J10	J11	J12	J13		
K09	K10	K11				
L09	L10	L11	L12			
M09	M10	M11	M12	M13		

This map is for general information only and should not be used for site specific planning. Data was collected from a wide range of local, state, and federal GIS databases "as is." Westchester County assumes no liability to any party for any loss or damage caused by errors or omissions resulting from negligence, accident or any other cause.





Natural Resource Inventory

Town of North Castle

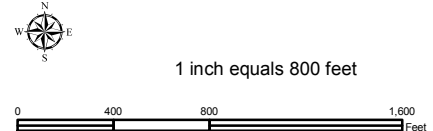
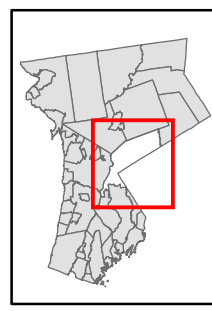
Map # L10

TILE INDEX

G09	G10	G11	G12	G13	G14	G15
H09	H10	H11	H12	H13	H14	H15
I09	I10	I11	I12	I13	I14	I15
J09	J10	J11	J12	J13		
K09	K10	K11				
L09	L10	L11	L12			
M09	M10	M11	M12	M13		

Legend

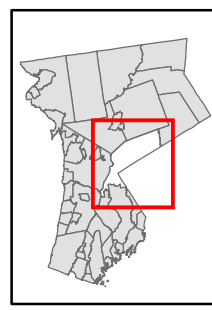
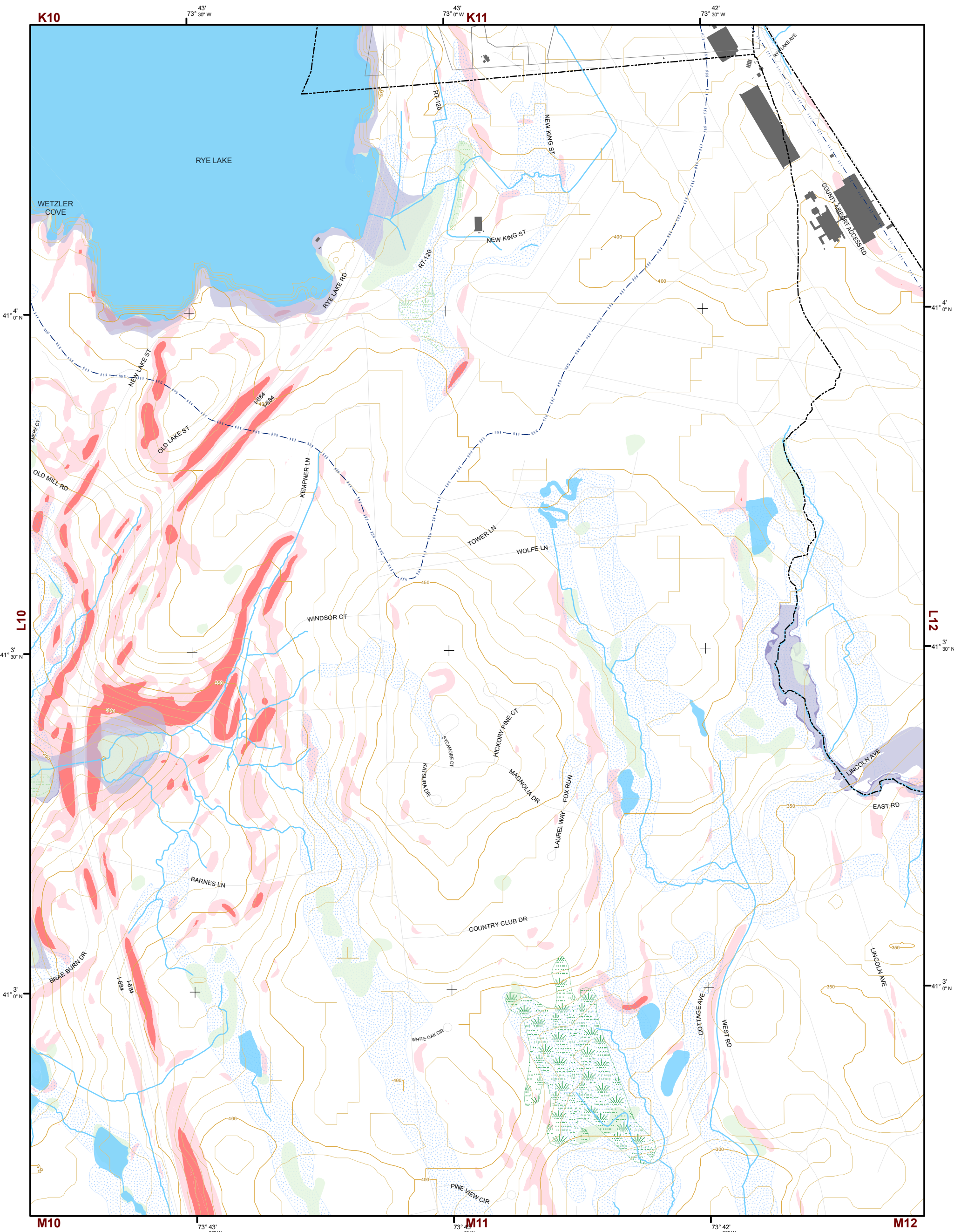
- 10' TOPO
- 50' TOPO
- Streams
- Lakes, Ponds or Reservoirs
- Aquifer
- Drainage Divides
- Hydric Soils
- Municipal Boundaries
- Tax Parcels
- Buildings
- Slope**
 - 15% - 25%
 - 25% and Over
- NYSDEC Wetlands**
 - Greater than 12.4 acres
 - Less than 12.4 acres
- Floodplains**
 - 100
 - 500
- National Wetlands Inventory



This map is for general information only and should not be used for site specific planning. Data was collected from a wide range of local, state, and federal GIS databases "as is." Westchester County assumes no liability to any party for any loss or damage caused by errors or omissions resulting from negligence, accident or any other cause.



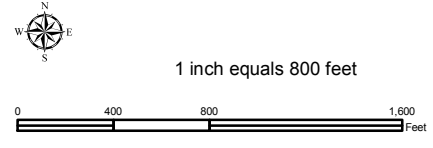
Westchester County Board of Legislators
 Andrew J. Span, Westchester County Executive



Natural Resource Inventory

Town of North Castle

Map # L11



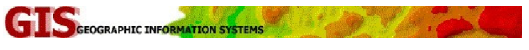
Legend

- 10' TOPO
- 50' TOPO
- Streams
- Lakes, Ponds or Reservoirs
- Aquifer
- Drainage Divides
- Hydric Soils
- Municipal Boundaries
- Tax Parcels
- Buildings
- Slope 15% - 25%
- Slope 25% and Over
- National Wetlands Inventory
- NYSDEC Wetlands Greater than 12.4 acres
- NYSDEC Wetlands Less than 12.4 acres
- Floodplains 100
- Floodplains 500

TILE INDEX

G09	G10	G11	G12	G13	G14	G15
H09	H10	H11	H12	H13	H14	H15
I09	I10	I11	I12	I13	I14	I15
J09	J10	J11	J12	J13		
K09	K10	K11				
L09	L10	L11	L12			
M09	M10	M11	M12	M13		

This map is for general information only and should not be used for site specific planning. Data was collected from a wide range of local, state, and federal GIS databases "as is." Westchester County assumes no liability to any party for any loss or damage caused by errors or omissions resulting from negligence, accident or any other cause.



Westchester County Board of Legislators
 Andrew J. Span, Westchester County Executive