

Natural Resource Inventory

Town of North Salem

Map # B13

Legend

- 10' TOPO
- 50' TOPO
- Streams
- Lakes, Ponds or Reservoirs
- Aquifer
- Drainage Divides
- Hydric Soils
- Municipal Boundaries
- Tax Parcels
- Buildings
- 15% - 25%
- Over 25%
- National Wetlands Inventory

- NYSDEC Wetlands
 - Greater than 12.4 acres
 - Less than 12.4 acres
- Floodplains
 - 100
 - 500

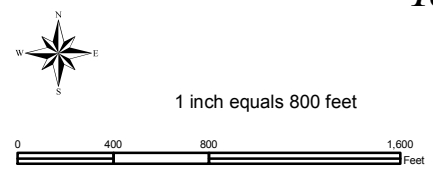
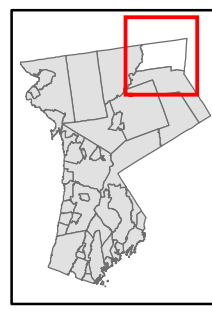
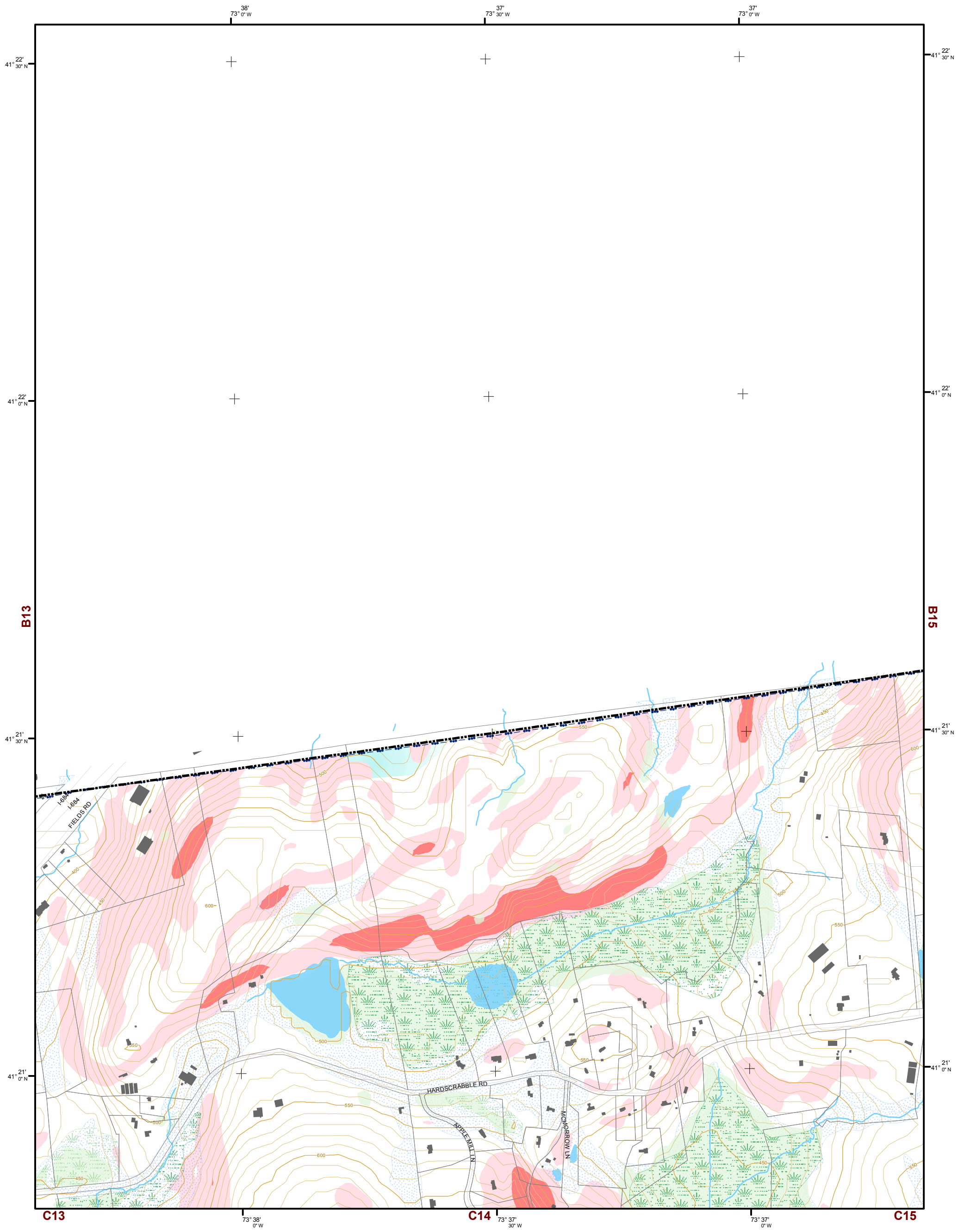
TILE INDEX

B12	B13	B14	B15	B16	B17
C12	C13	C14	C15	C16	C17
D12	D13	D14	D15	D16	D17
E12	E13	E14	E15	E16	E17

This map is for general information only and should not be used for site specific planning. Data was collected from a wide range of local, state, and federal GIS databases "as is." Westchester County assumes no liability to any party for any loss or damage caused by errors or omissions resulting from negligence, accident or any other cause.

Westchester County Board of Legislators
Andrew J. Span, Westchester County Executive





Natural Resource Inventory

Town of North Salem

Map # B14

- Legend**
- 10' TOPO
 - 50' TOPO
 - Streams
 - Lakes, Ponds or Reservoirs
 - Aquifer
 - Drainage Divides
 - Hydric Soils
 - Municipal Boundaries
 - Tax Parcels
 - Buildings
 - 15% - 25%
 - Over 25%
 - National Wetlands Inventory

- NYSDEC Wetlands**
- Greater than 12.4 acres
 - Less than 12.4 acres
- Floodplains**
- 100
 - 500

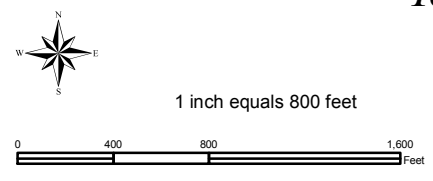
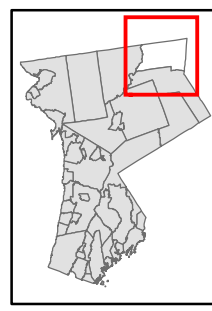
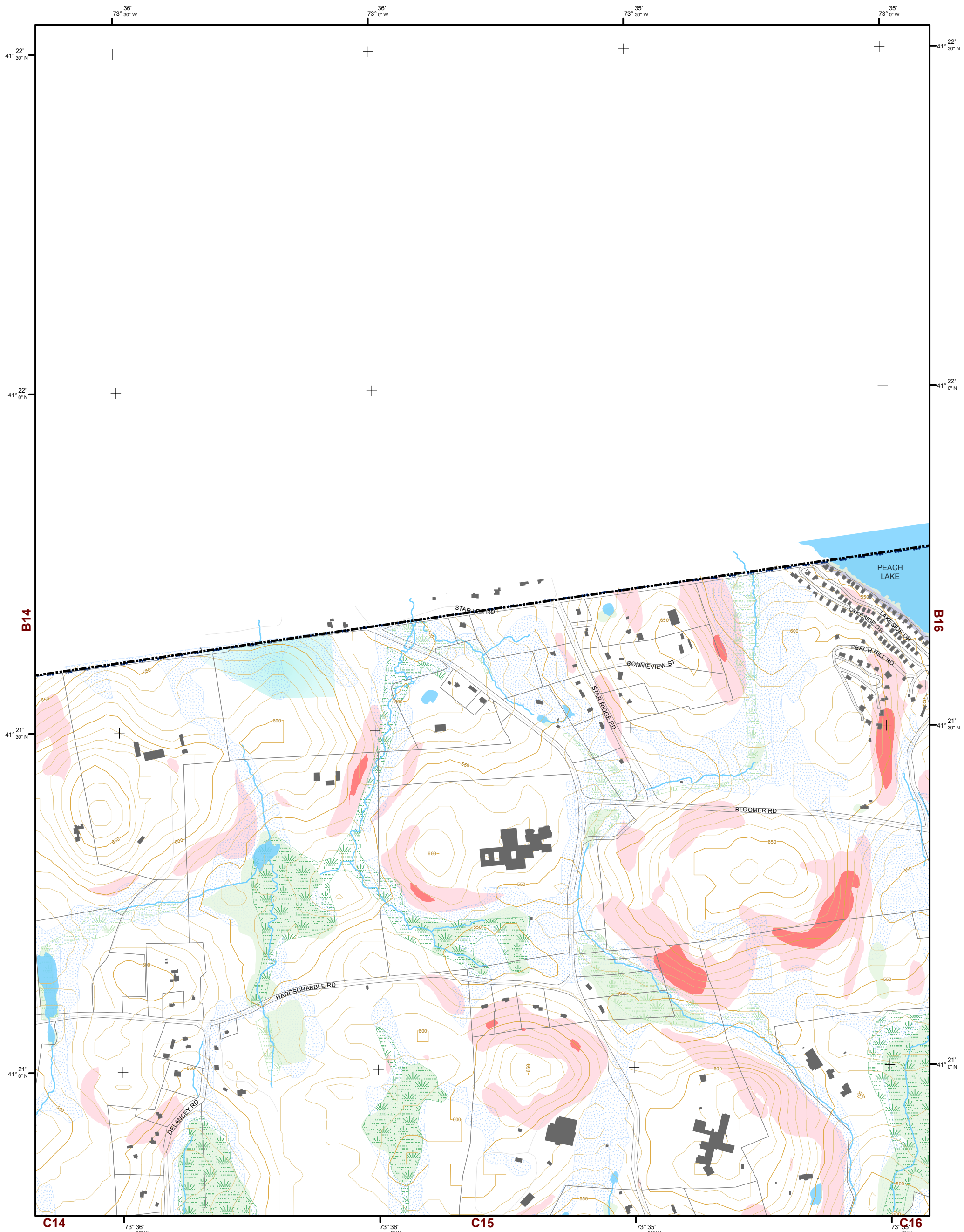
This map is for general information only and should not be used for site specific planning. Data was collected from a wide range of local, state, and federal GIS databases "as is." Westchester County assumes no liability to any party for any loss or damage caused by errors or omissions resulting from negligence, accident or any other cause.

Westchester
County Board of Legislators
Andrew J. Span, Westchester County Executive



TILE INDEX

B12	B13	B14	B15	B16	B17
C12	C13	C14	C15	C16	C17
D12	D13	D14	D15	D16	D17
E12	E13	E14	E15	E16	E17



Natural Resource Inventory

Town of North Salem

Map # B15

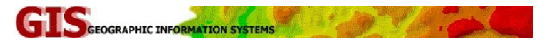
Legend

- 10' TOPO
- 50' TOPO
- Streams
- Lakes, Ponds or Reservoirs
- Aquifer
- Drainage Divides
- Hydric Soils
- Municipal Boundaries
- Tax Parcels
- Buildings
- 15% - 25%
- Over 25%
- National Wetlands Inventory
- NYSDEC Wetlands
Greater than 12.4 acres
- NYSDEC Wetlands
Less than 12.4 acres
- Floodplains
100
- Floodplains
500

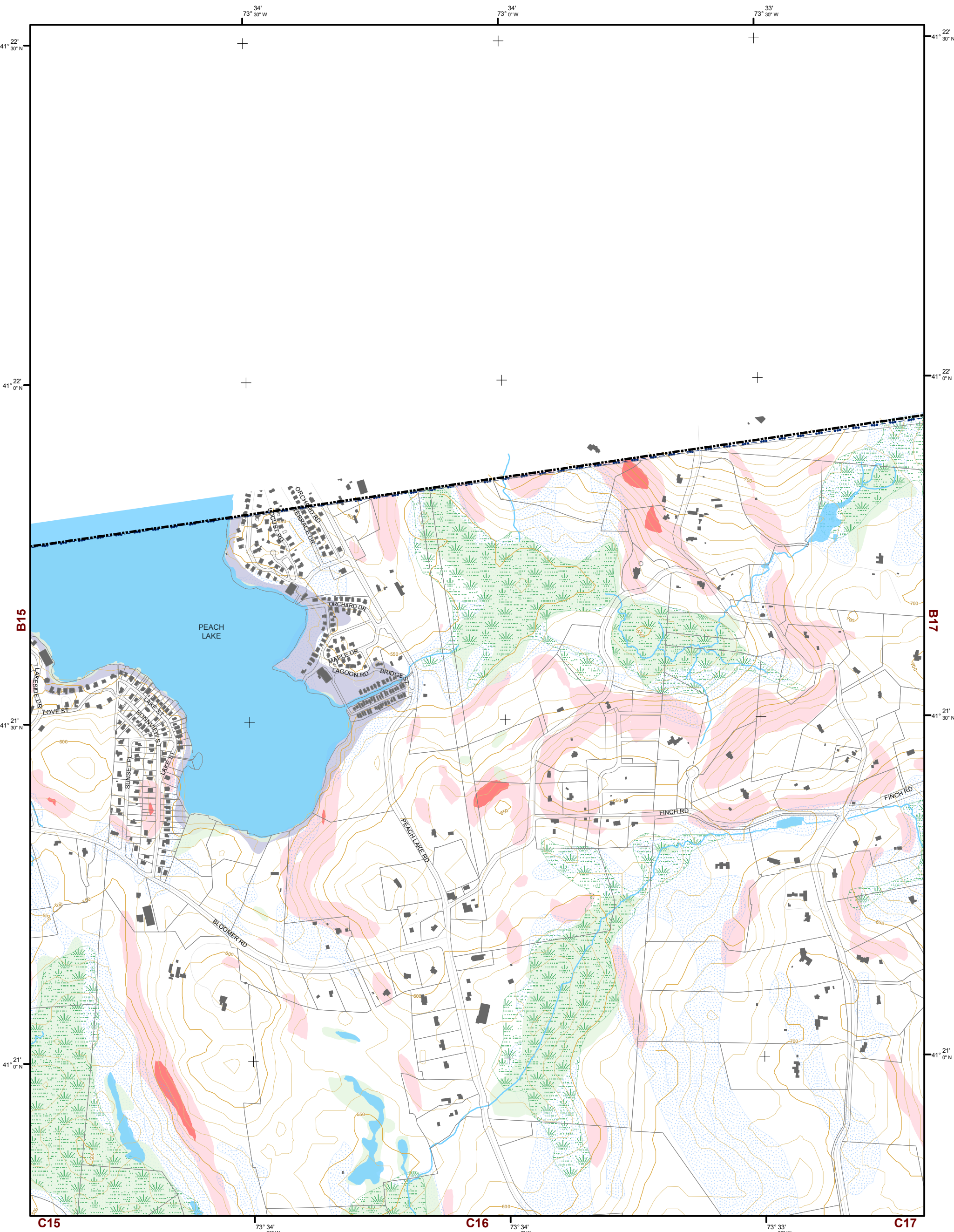
TILE INDEX

B12	B13	B14	B15	B16	B17
C12	C13	C14	C15	C16	C17
D12	D13	D14	D15	D16	D17
E12	E13	E14	E15	E16	E17

This map is for general information only and should not be used for site specific planning. Data was collected from a wide range of local, state, and federal GIS databases "as is." Westchester County assumes no liability to any party for any loss or damage caused by errors or omissions resulting from negligence, accident or any other cause.



Westchester
County Board of Legislators
Andrew J. Spano, Westchester County Executive



Natural Resource Inventory Map # B16

Town of North Salem

TILE INDEX

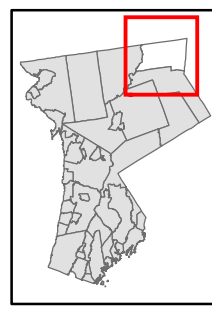
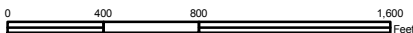
B12	B13	B14	B15	B16	B17
C12	C13	C14	C15	C16	C17
D12	D13	D14	D15	D16	D17
E12	E13	E14	E15	E16	E17

Legend

- 10' TOPO
- 50' TOPO
- Streams
- Lakes, Ponds or Reservoirs
- Aquifer
- Drainage Divides
- Hydric Soils
- Municipal Boundaries
- Tax Parcels
- Buildings
- 15% - 25%
- Over 25%
- National Wetlands Inventory
- NYSDEC Wetlands
Greater than 12.4 acres
- NYSDEC Wetlands
Less than 12.4 acres
- Floodplains
100
- Floodplains
500



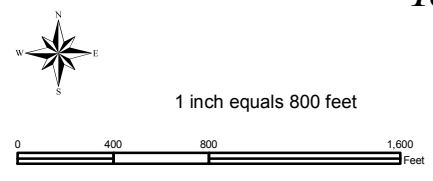
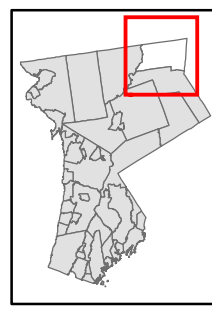
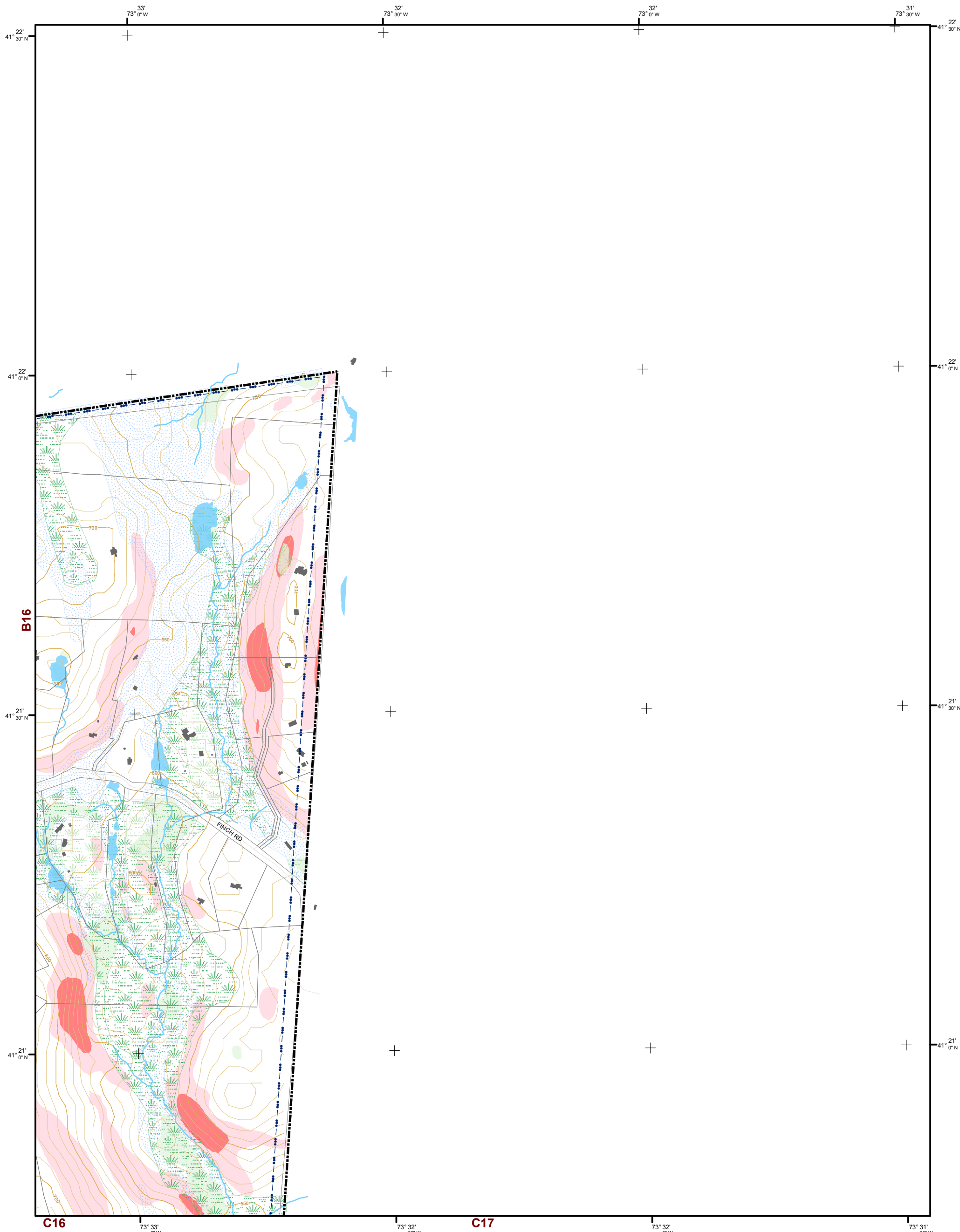
1 inch equals 800 feet



This map is for general information only and should not be used for site specific planning. Data was collected from a wide range of local, state, and federal GIS databases "as is." Westchester County assumes no liability to any party for any loss or damage caused by errors or omissions resulting from negligence, accident or any other cause.



Westchester County Board of Legislators
Andrew J. Span, Westchester County Executive



Natural Resource Inventory

Town of North Salem

Map # B17

Legend

- 10' TOPO
- 50' TOPO
- Streams
- Lakes, Ponds or Reservoirs
- Aquifer
- Drainage Divides
- Hydric Soils
- Municipal Boundaries
- Tax Parcels
- Buildings
- 15% - 25%
- Over 25%
- National Wetlands Inventory
- Greater than 12.4 acres
- Less than 12.4 acres
- 100
- 500

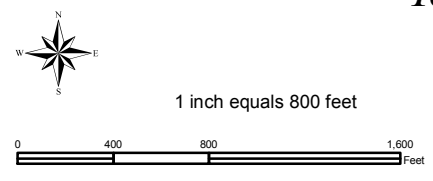
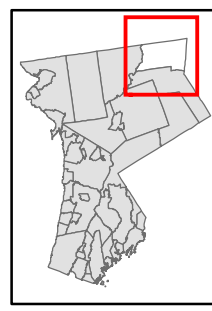
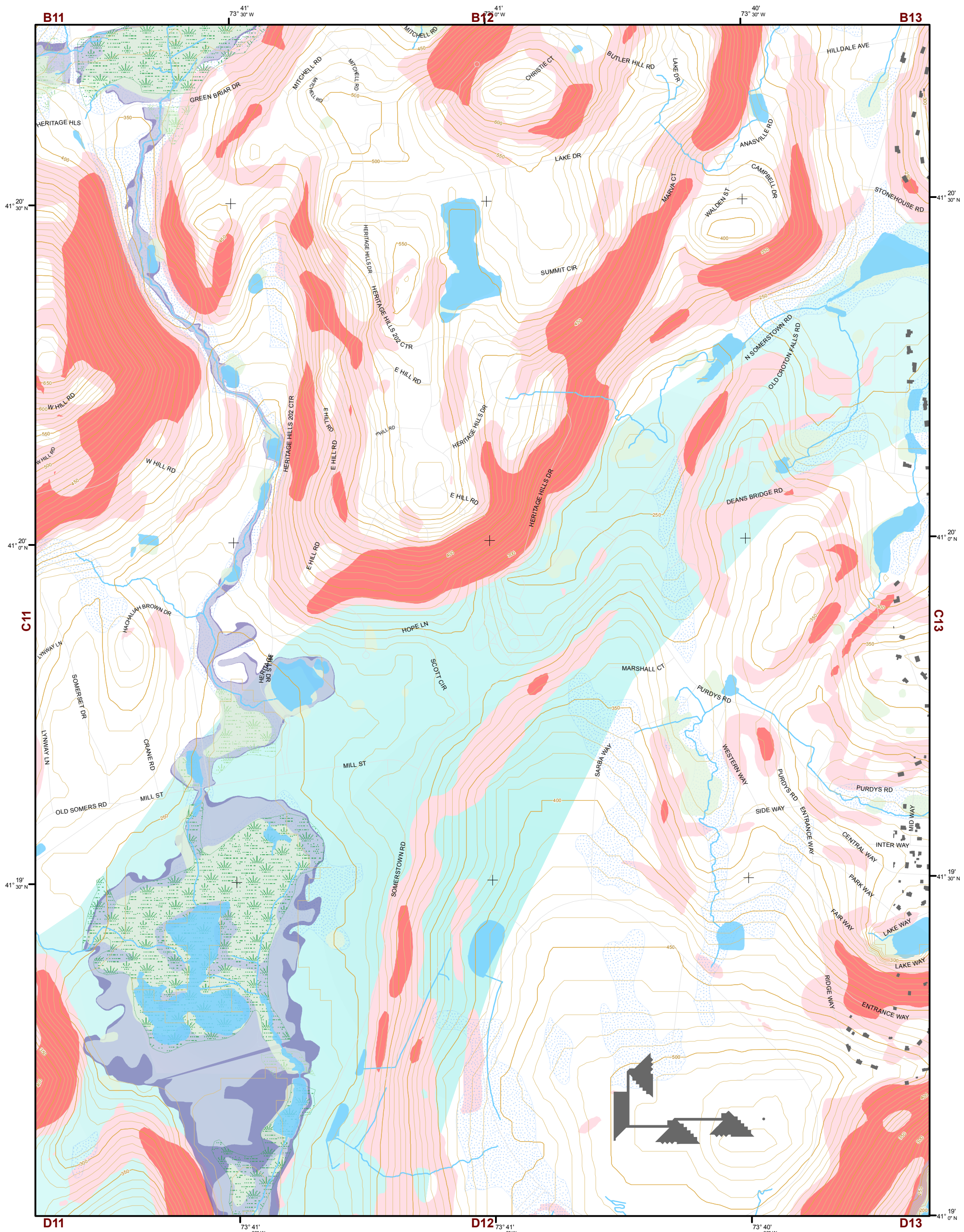
TILE INDEX

B12	B13	B14	B15	B16	B17
C12	C13	C14	C15	C16	C17
D12	D13	D14	D15	D16	D17
E12	E13	E14	E15	E16	E17

This map is for general information only and should not be used for site specific planning. Data was collected from a wide range of local, state, and federal GIS databases "as is." Westchester County assumes no liability to any party for any loss or damage caused by errors or omissions resulting from negligence, accident or any other cause.



Westchester County Board of Legislators
Andrew J. Span, Westchester County Executive



Natural Resource Inventory

Town of North Salem

Map # C12

Legend

- 10' TOPO
- 50' TOPO
- Streams
- Lakes, Ponds or Reservoirs
- Aquifer
- Drainage Divides
- Hydric Soils
- Municipal Boundaries
- Tax Parcels
- Buildings
- 15% - 25%
- Over 25%
- National Wetlands Inventory

- NYSDEC Wetlands
 - Greater than 12.4 acres
 - Less than 12.4 acres
- Floodplains
 - 100
 - 500

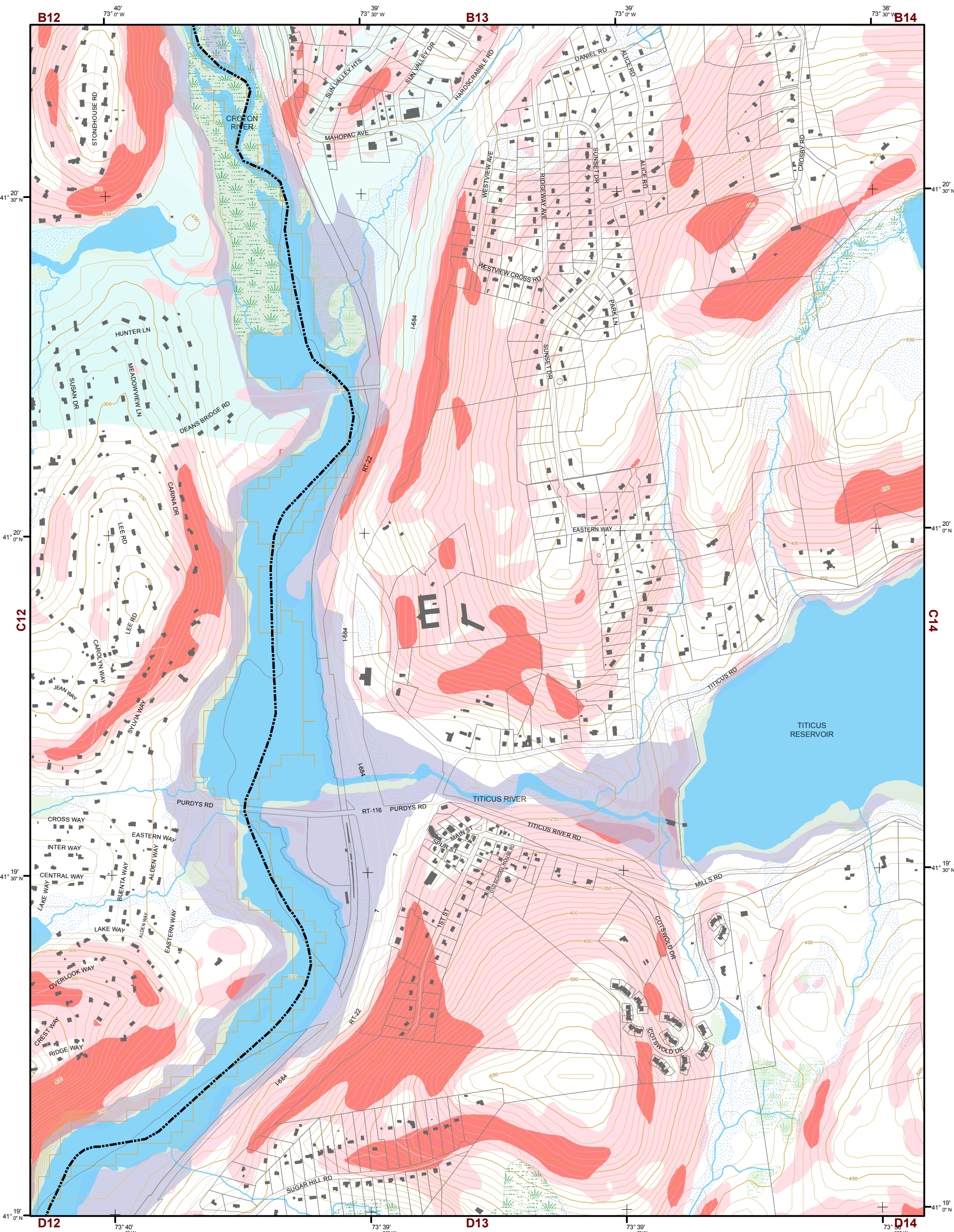
TILE INDEX

B12	B13	B14	B15	B16	B17
	C13	C14	C15	C16	C17
D12	D13	D14	D15	D16	D17
E12	E13	E14	E15	E16	E17

This map is for general information only and should not be used for site specific planning. Data was collected from a wide range of local, state, and federal GIS databases "as is." Westchester County assumes no liability to any party for any loss or damage caused by errors or omissions resulting from negligence, accident or any other cause.

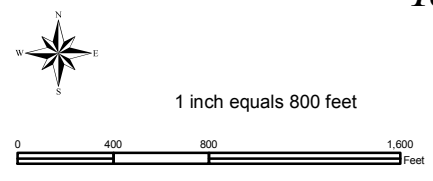
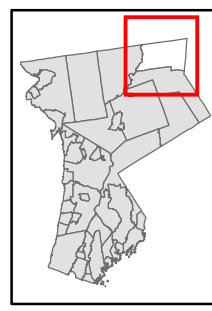


Westchester County Board of Legislators



Natural Resource Inventory Map # C13

Town of North Salem



Legend

- 10' TOPO
- 50' TOPO
- Streams
- Lakes, Ponds or Reservoirs
- Aquifer
- Drainage Divides
- Hydric Soils
- Municipal Boundaries
- Tax Parcels
- Buildings
- 15% - 25%
- Over 25%
- National Wetlands Inventory
- Floodplains 100
- Floodplains 500
- NYSDEC Wetlands Greater than 12.4 acres
- NYSDEC Wetlands Less than 12.4 acres

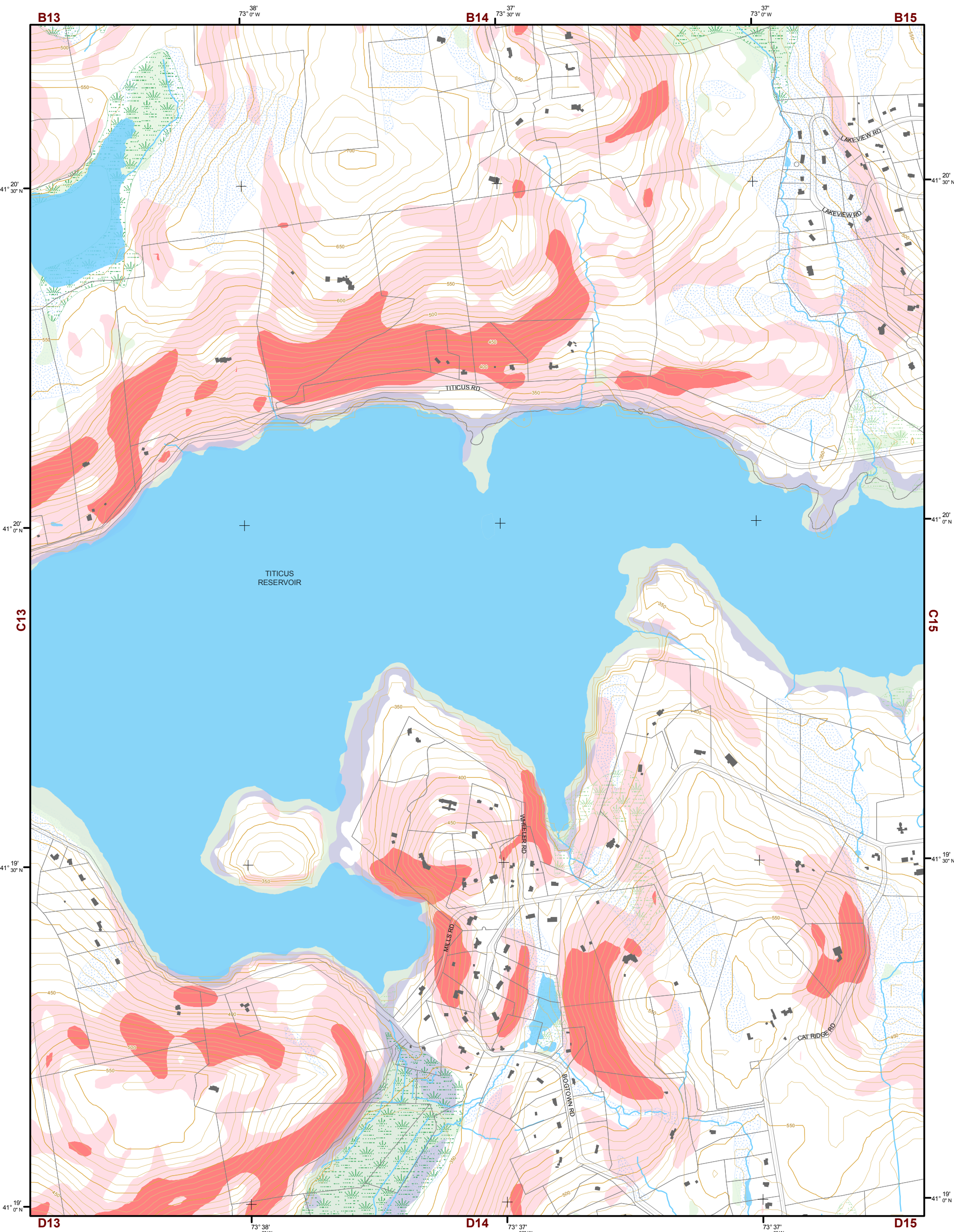
TILE INDEX

B12	B13	B14	B15	B16	B17
C12	C13	C14	C15	C16	C17
D12	D13	D14	D15	D16	D17
E12	E13	E14	E15	E16	E17

This map is for general information only and should not be used for site specific planning. Data was collected from a wide range of local, state, and federal GIS databases "as is." Westchester County assumes no liability to any party for any loss or damage caused by errors or omissions resulting from negligence, accident or any other cause.

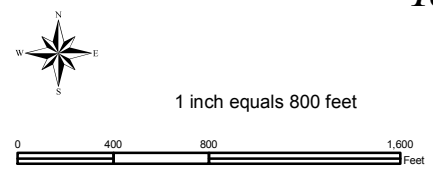
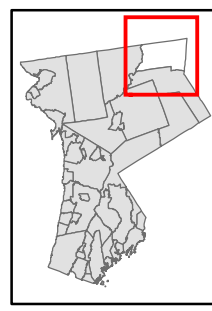


Westchester County
 Andrew J. Span, Westchester County Executive
 County Board of Legislators



Natural Resource Inventory Map # C14

Town of North Salem



Legend

- 10' TOPO
- 50' TOPO
- Streams
- Lakes, Ponds or Reservoirs
- Aquifer
- Drainage Divides
- Hydric Soils
- Municipal Boundaries
- Tax Parcels
- Buildings
- 15% - 25%
- Over 25%
- National Wetlands Inventory
- NYSDEC Wetlands
Greater than 12.4 acres
- NYSDEC Wetlands
Less than 12.4 acres
- Floodplains
100
- Floodplains
500

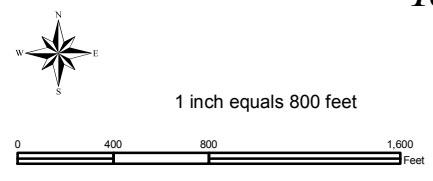
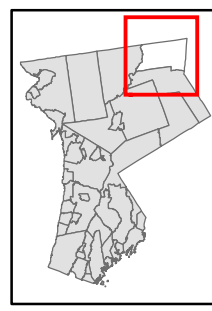
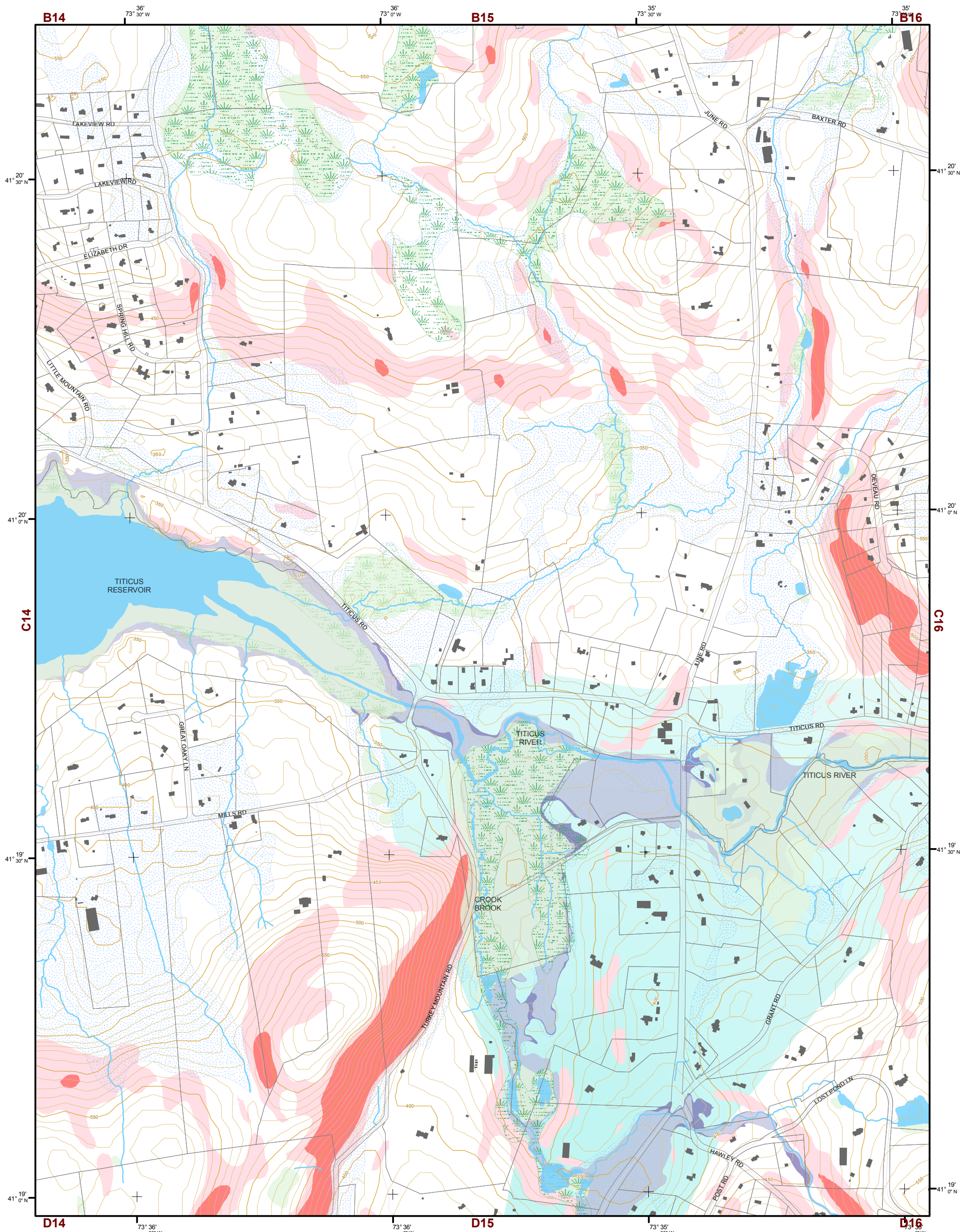
TILE INDEX

B12	B13	B14	B15	B16	B17
C12	C13	C14	C15	C16	C17
D12	D13	D14	D15	D16	D17
E12	E13	E14	E15	E16	E17

This map is for general information only and should not be used for site specific planning. Data was collected from a wide range of local, state, and federal GIS databases "as is." Westchester County assumes no liability to any party for any loss or damage caused by errors or omissions resulting from negligence, accident or any other cause.



Westchester County Board of Legislators
Andrew J. Span, Westchester County Executive



Natural Resource Inventory

Town of North Salem

Map # C15

Legend

- 10' TOPO
- 50' TOPO
- Streams
- Lakes, Ponds or Reservoirs
- Aquifer
- Drainage Divides
- Hydric Soils
- Municipal Boundaries
- Tax Parcels
- Buildings
- 15% - 25%
- Over 25%
- National Wetlands Inventory
- NYSDEC Wetlands
Greater than 12.4 acres
- NYSDEC Wetlands
Less than 12.4 acres
- Floodplains
100
- Floodplains
500

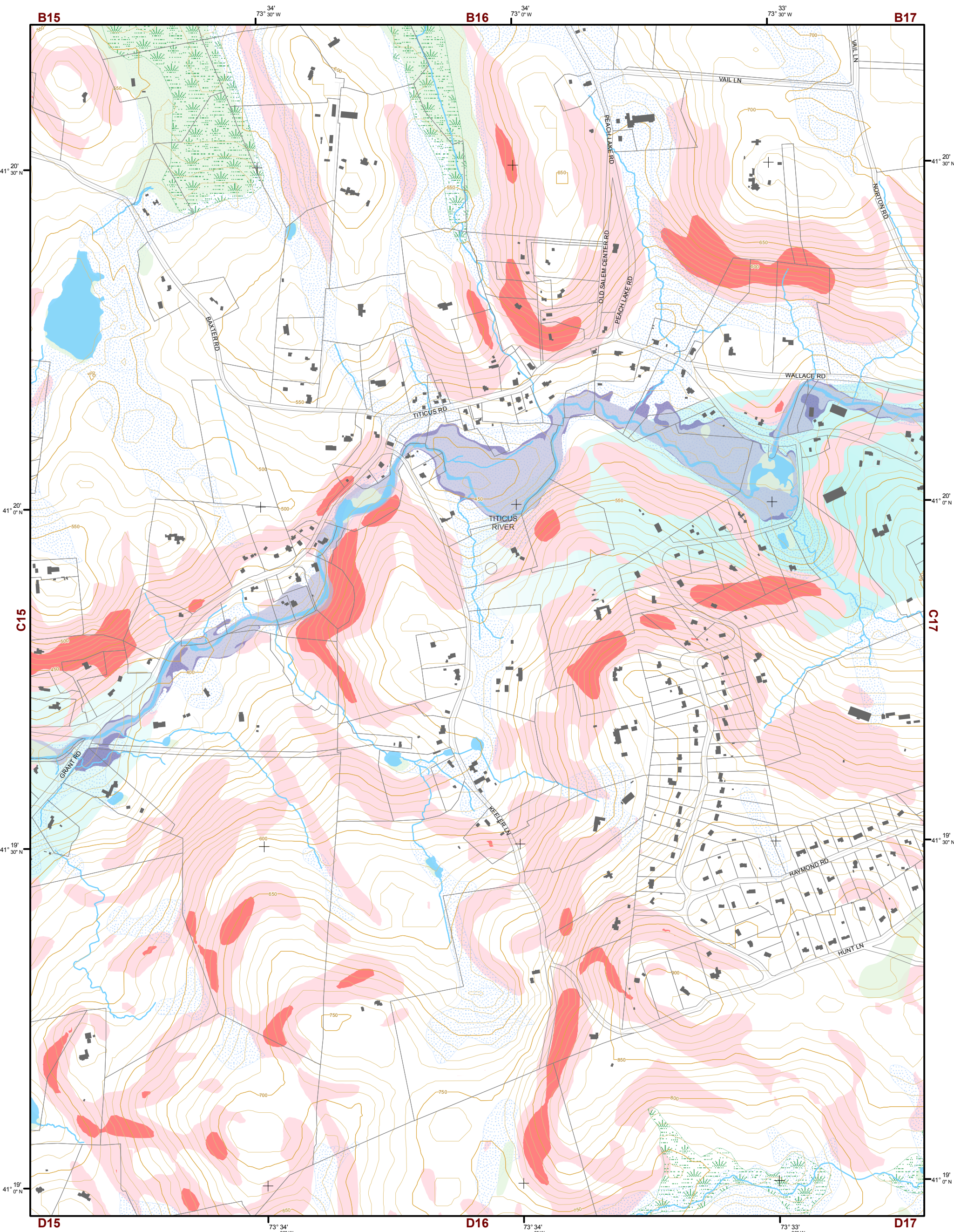
TILE INDEX

B12	B13	B14	B15	B16	B17
C12	C13	C14	C15	C16	C17
D12	D13	D14	D15	D16	D17
E12	E13	E14	E15	E16	E17

This map is for general information only and should not be used for site specific planning. Data was collected from a wide range of local, state, and federal GIS databases "as is." Westchester County assumes no liability to any party for any loss or damage caused by errors or omissions resulting from negligence, accident or any other cause.

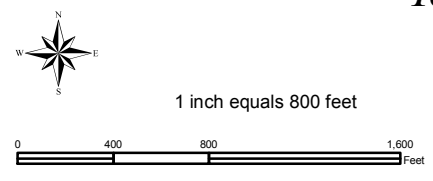
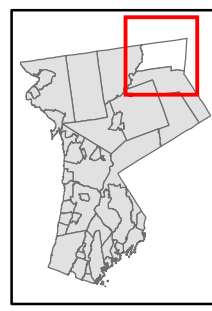


Westchester
COUNTY
Andrew J. Span, Westchester County Executive
County Board of Legislators



Natural Resource Inventory Map # C16

Town of North Salem



Legend

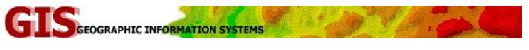
- 10' TOPO
- 50' TOPO
- Streams
- Lakes, Ponds or Reservoirs
- Aquifer
- Drainage Divides
- Hydric Soils
- Municipal Boundaries
- Tax Parcels
- Buildings
- 15% - 25%
- Over 25%
- National Wetlands Inventory
- NYSDEC Wetlands
Greater than 12.4 acres
- NYSDEC Wetlands
Less than 12.4 acres
- Floodplains
100
- Floodplains
500

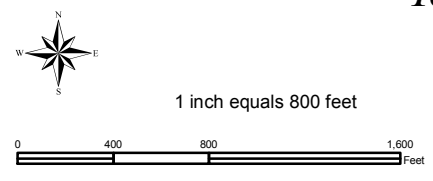
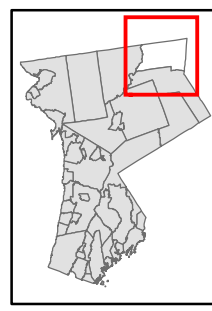
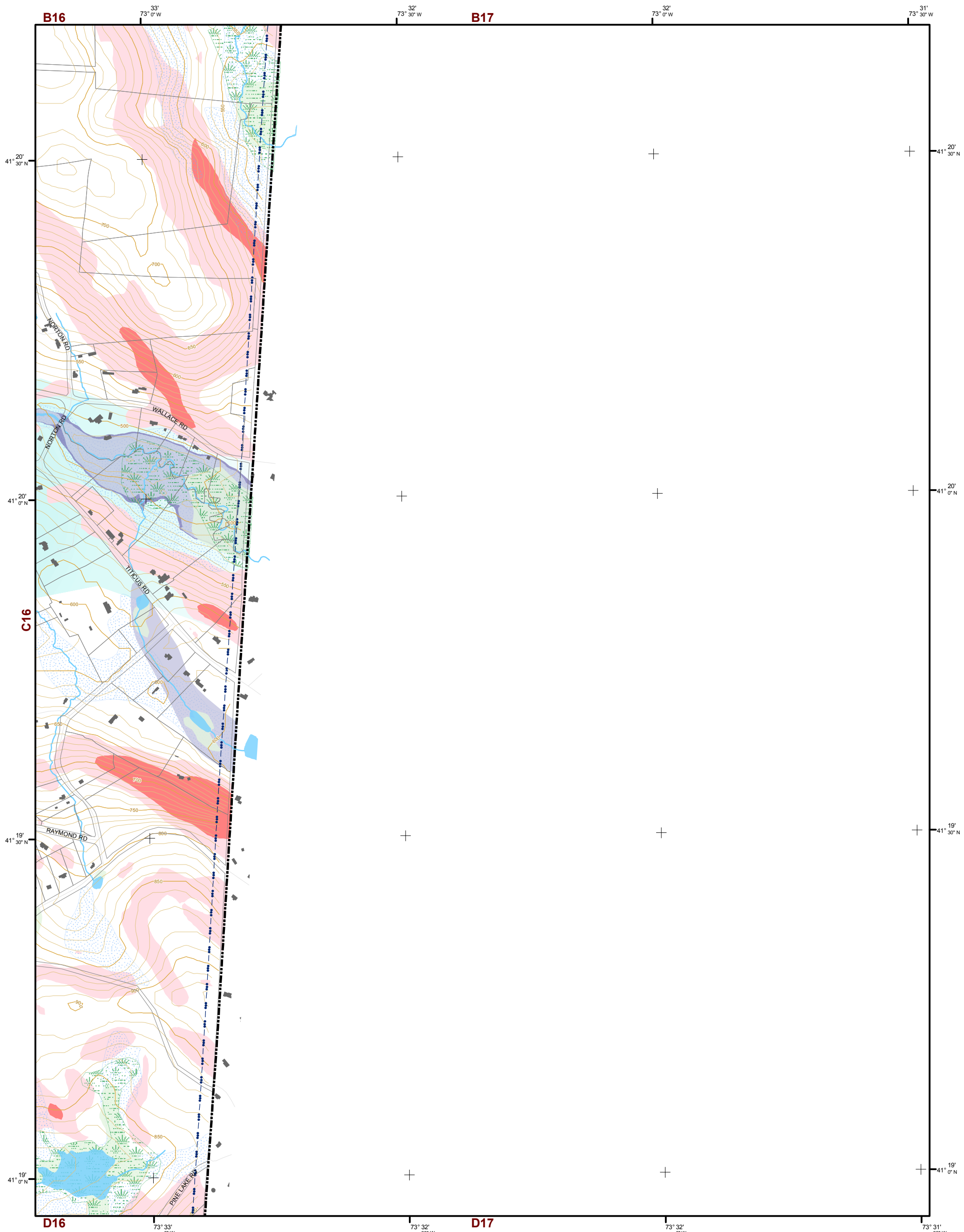
TILE INDEX

B12	B13	B14	B15	B16	B17
C12	C13	C14	C15	C16	C17
D12	D13	D14	D15	D16	D17
E12	E13	E14	E15	E16	E17

This map is for general information only and should not be used for site specific planning. Data was collected from a wide range of local, state, and federal GIS databases "as is." Westchester County assumes no liability to any party for any loss or damage caused by errors or omissions resulting from negligence, accident or any other cause.

Westchester County Board of Legislators
Andrew J. Span, Westchester County Executive





Natural Resource Inventory

Town of North Salem

Map # C17

Legend

- 10' TOPO
- 50' TOPO
- Streams
- Lakes, Ponds or Reservoirs
- Aquifer
- Drainage Divides
- Hydric Soils
- Municipal Boundaries
- Tax Parcels
- Buildings
- 15% - 25%
- Over 25%
- National Wetlands Inventory
- NYSDEC Wetlands
Greater than 12.4 acres
- NYSDEC Wetlands
Less than 12.4 acres
- Floodplains
100
- Floodplains
500

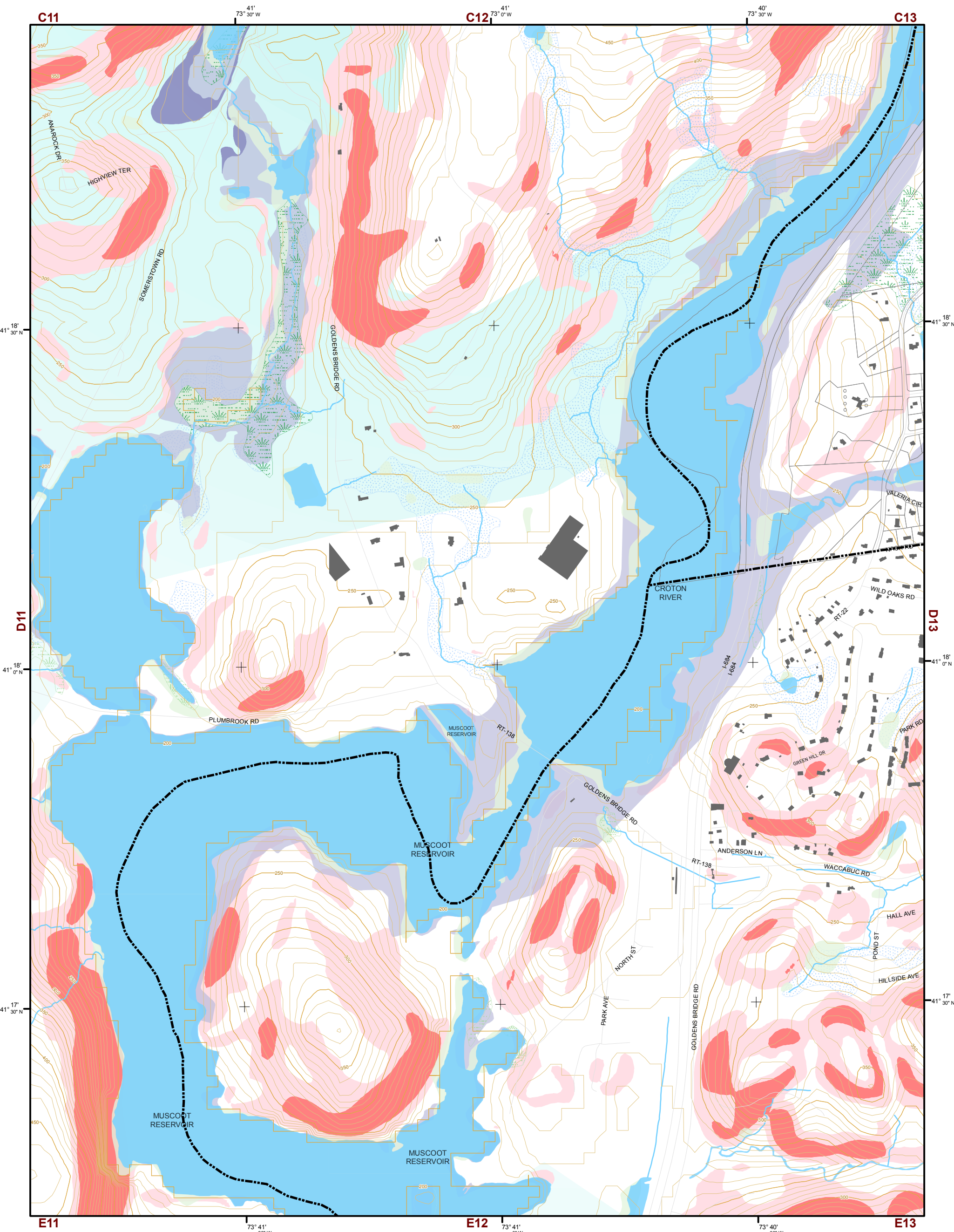
TILE INDEX

B12	B13	B14	B15	B16	B17
C12	C13	C14	C15	C16	C17
D12	D13	D14	D15	D16	D17
E12	E13	E14	E15	E16	E17

This map is for general information only and should not be used for site specific planning. Data was collected from a wide range of local, state, and federal GIS databases "as is." Westchester County assumes no liability to any party for any loss or damage caused by errors or omissions resulting from negligence, accident or any other cause.

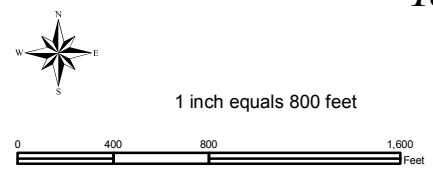
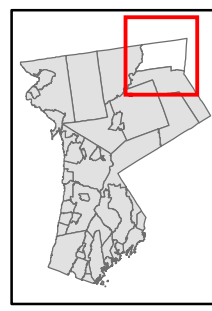


Westchester County Board of Legislators
Andrew J. Span, Westchester County Executive



Natural Resource Inventory Map # D12

Town of North Salem



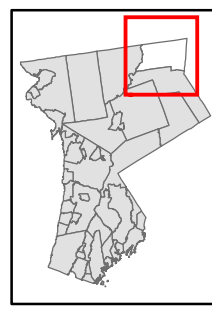
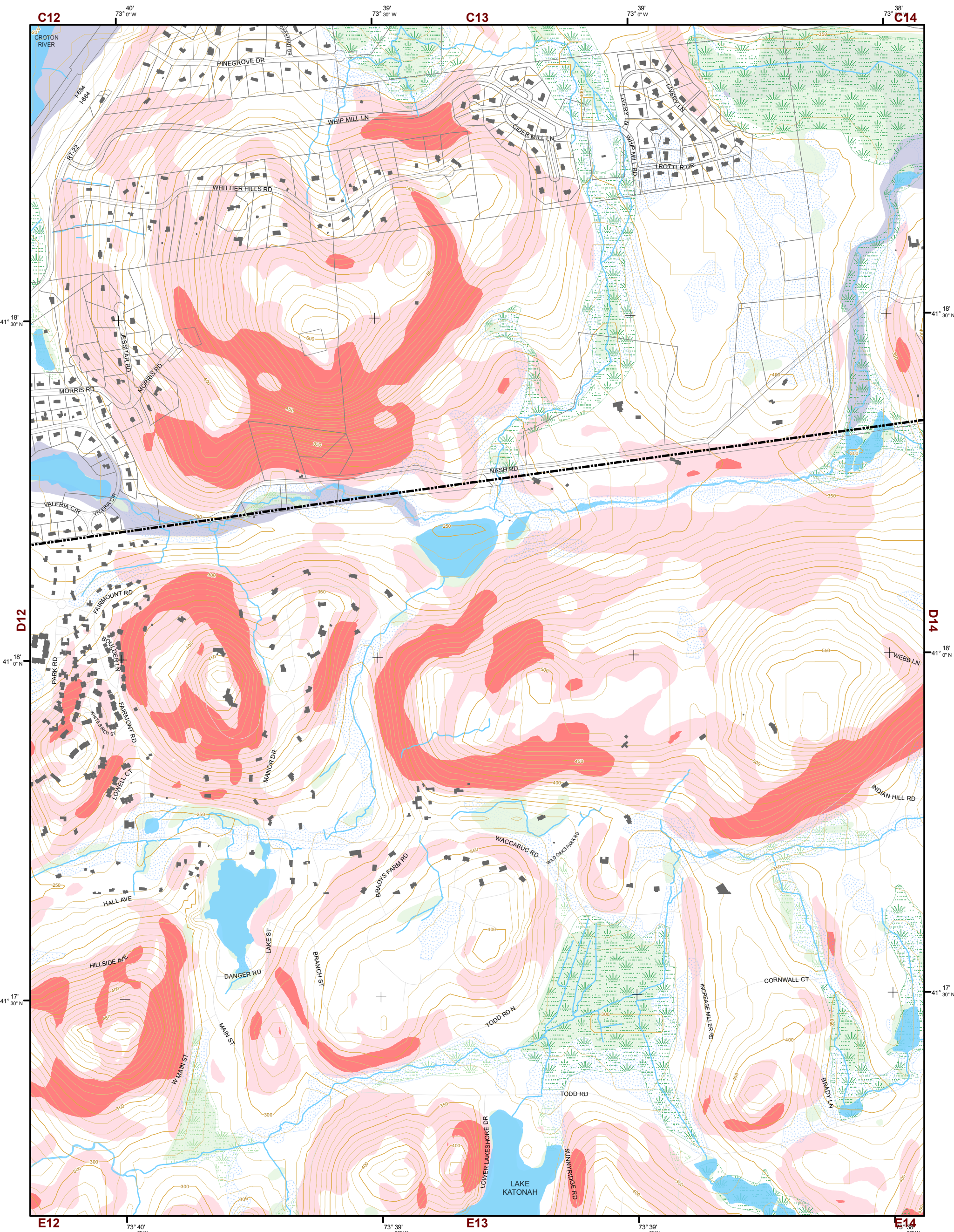
- Legend**
- 10' TOPO
 - 50' TOPO
 - Streams
 - Lakes, Ponds or Reservoirs
 - Aquifer
 - Drainage Divides
 - Hydric Soils
 - Municipal Boundaries
 - Tax Parcels
 - Buildings
 - 15% - 25%
 - Over 25%
 - National Wetlands Inventory
 - NYSDEC Wetlands
Greater than 12.4 acres
 - NYSDEC Wetlands
Less than 12.4 acres
 - Floodplains
100
 - Floodplains
500

TILE INDEX

B12	B13	B14	B15	B16	B17
C12	C13	C14	C15	C16	C17
D12	D13	D14	D15	D16	D17
E12	E13	E14	E15	E16	E17

This map is for general information only and should not be used for site specific planning. Data was collected from a wide range of local, state, and federal GIS databases "as is". Westchester County assumes no liability to any party for any loss or damage caused by errors or omissions resulting from negligence, accident or any other cause.



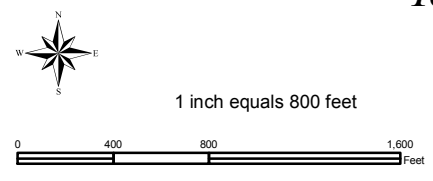


Natural Resource Inventory

Town of North Salem

Map # D13

TILE INDEX



Legend

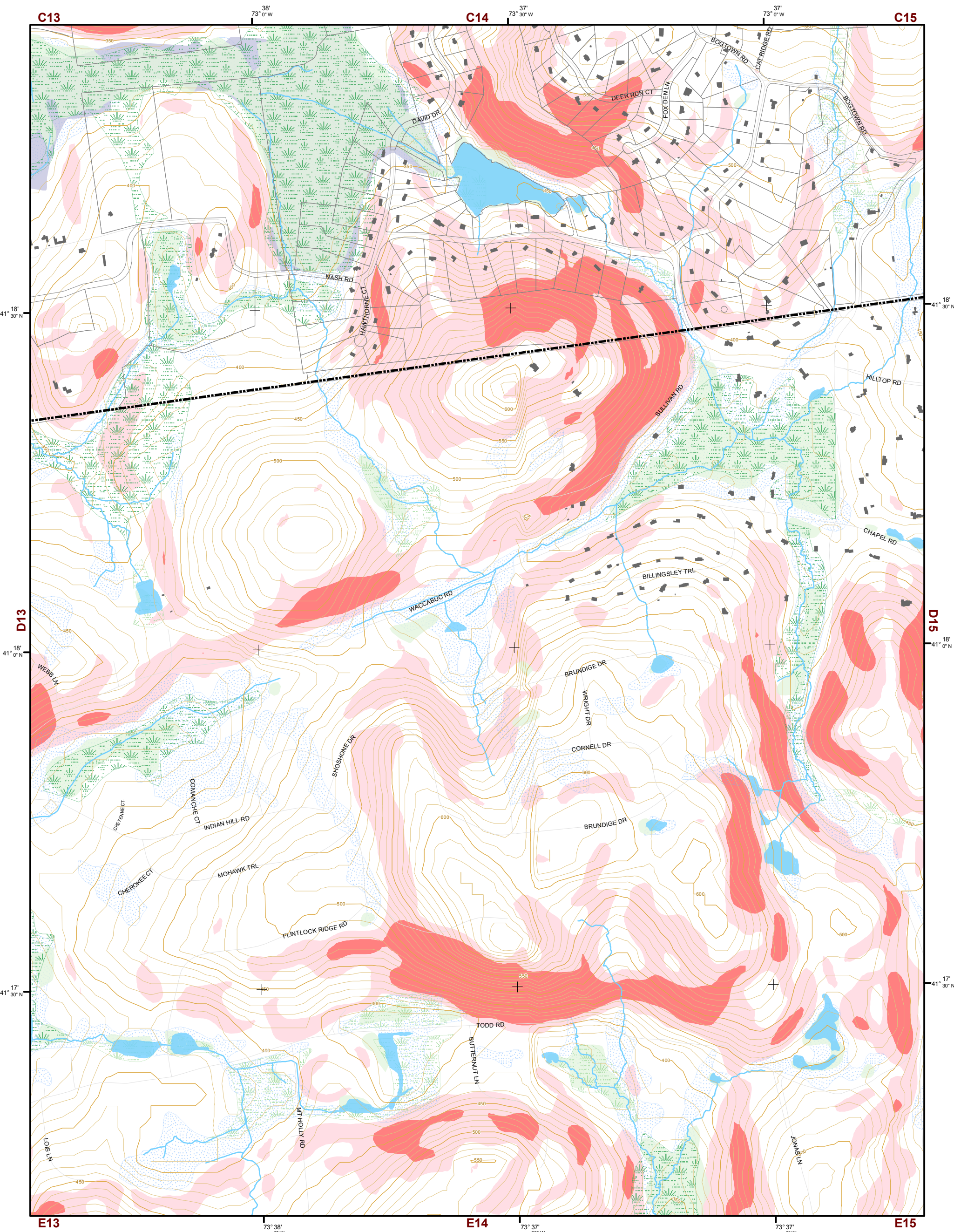
- 10' TOPO
- 50' TOPO
- Streams
- Lakes, Ponds or Reservoirs
- Aquifer
- Drainage Divides
- Hydric Soils
- Municipal Boundaries
- Tax Parcels
- Buildings
- 15% - 25%
- Over 25%
- National Wetlands Inventory
- NYSDEC Wetlands
Greater than 12.4 acres
- NYSDEC Wetlands
Less than 12.4 acres
- Floodplains
100
- Floodplains
500

B12	B13	B14	B15	B16	B17
C12	C13	C14	C15	C16	C17
D12	D13	D14	D15	D16	D17
E12	E13	E14	E15	E16	E17

This map is for general information only and should not be used for site specific planning. Data was collected from a wide range of local, state, and federal GIS databases "as is." Westchester County assumes no liability to any party for any loss or damage caused by errors or omissions resulting from negligence, accident or any other cause.



Westchester County Board of Legislators
Andrew J. Span, Westchester County Executive

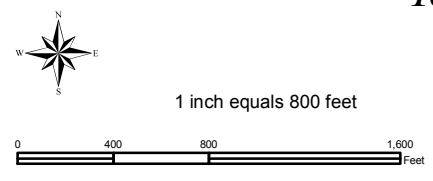
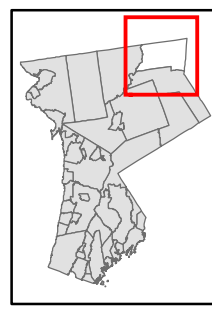


Natural Resource Inventory

Town of North Salem

Map # D14

TILE INDEX



Legend

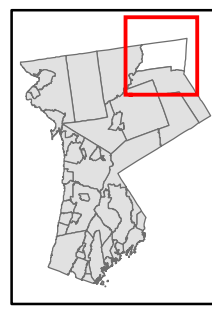
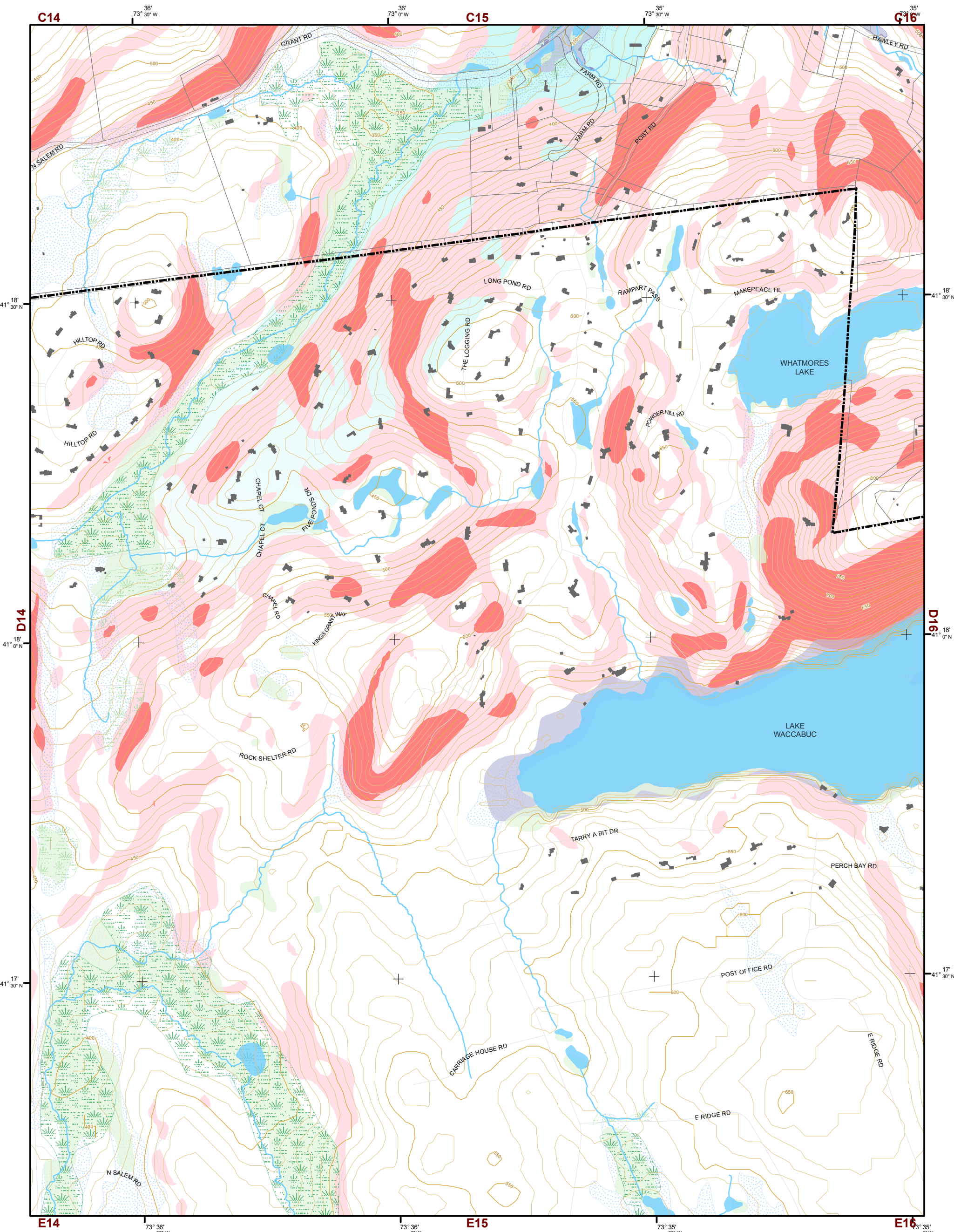
- 10' TOPO
- 50' TOPO
- Streams
- Lakes, Ponds or Reservoirs
- Aquifer
- Drainage Divides
- Hydric Soils
- Municipal Boundaries
- Tax Parcels
- Buildings
- 15% - 25%
- Over 25%
- National Wetlands Inventory
- Greater than 12.4 acres
- Less than 12.4 acres
- 100
- 500

B12	B13	B14	B15	B16	B17
C12	C13	C14	C15	C16	C17
D12	D13	D14	D15	D16	D17
E12	E13	E14	E15	E16	E17

This map is for general information only and should not be used for site specific planning. Data was collected from a wide range of local, state, and federal GIS databases "as is." Westchester County assumes no liability to any party for any loss or damage caused by errors or omissions resulting from negligence, accident or any other cause.



Westchester County Board of Legislators
Andrew J. Span, Westchester County Executive



1 inch equals 800 feet



Natural Resource Inventory

Town of North Salem

Map # D15

Legend

- 10' TOPO
- 50' TOPO
- Streams
- Lakes, Ponds or Reservoirs
- Aquifer
- Drainage Divides
- Hydric Soils
- Municipal Boundaries
- Tax Parcels
- Buildings
- 15% - 25%
- Over 25%
- National Wetlands Inventory

- NYSDEC Wetlands
 - Greater than 12.4 acres
 - Less than 12.4 acres
- Floodplains
 - 100
 - 500

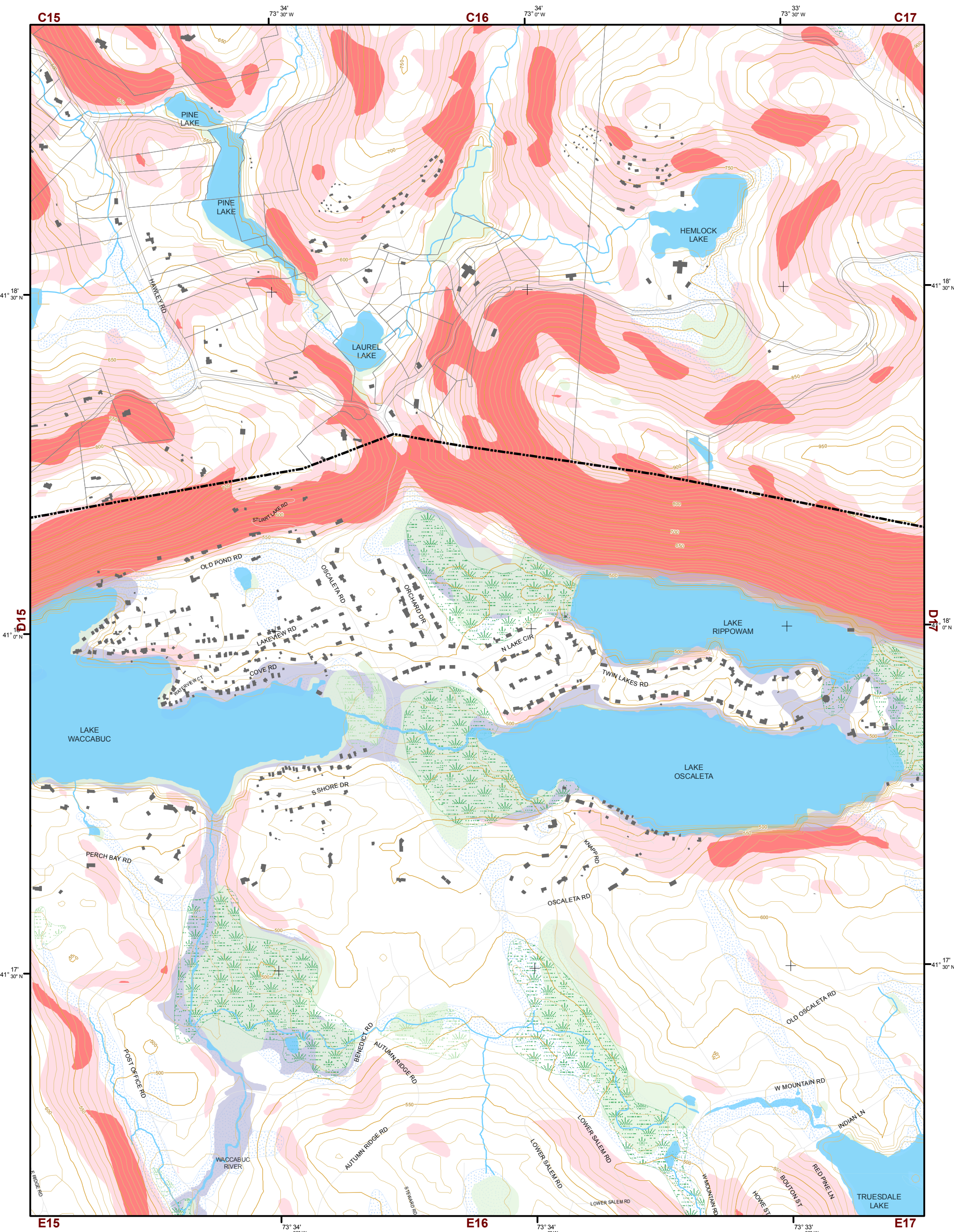
TILE INDEX

B12	B13	B14	B15	B16	B17
C12	C13	C14	C15	C16	C17
D12	D13	D14	D15	D16	D17
E12	E13	E14	E15	E16	E17

This map is for general information only and should not be used for site specific planning. Data was collected from a wide range of local, state, and federal GIS databases "as is." Westchester County assumes no liability to any party for any loss or damage caused by errors or omissions resulting from negligence, accident or any other cause.



Westchester County Board of Legislators
Andrew J. Span, Westchester County Executive

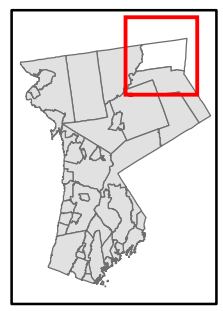


Natural Resource Inventory

Town of North Salem

Map # D16

TILE INDEX



1 inch equals 800 feet



Legend

- 10' TOPO
- 50' TOPO
- Streams
- Lakes, Ponds or Reservoirs
- Aquifer
- Drainage Divides
- Hydric Soils
- Municipal Boundaries
- Tax Parcels
- Buildings
- 15% - 25%
- Over 25%
- National Wetlands Inventory

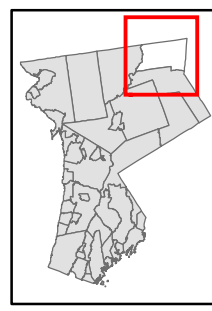
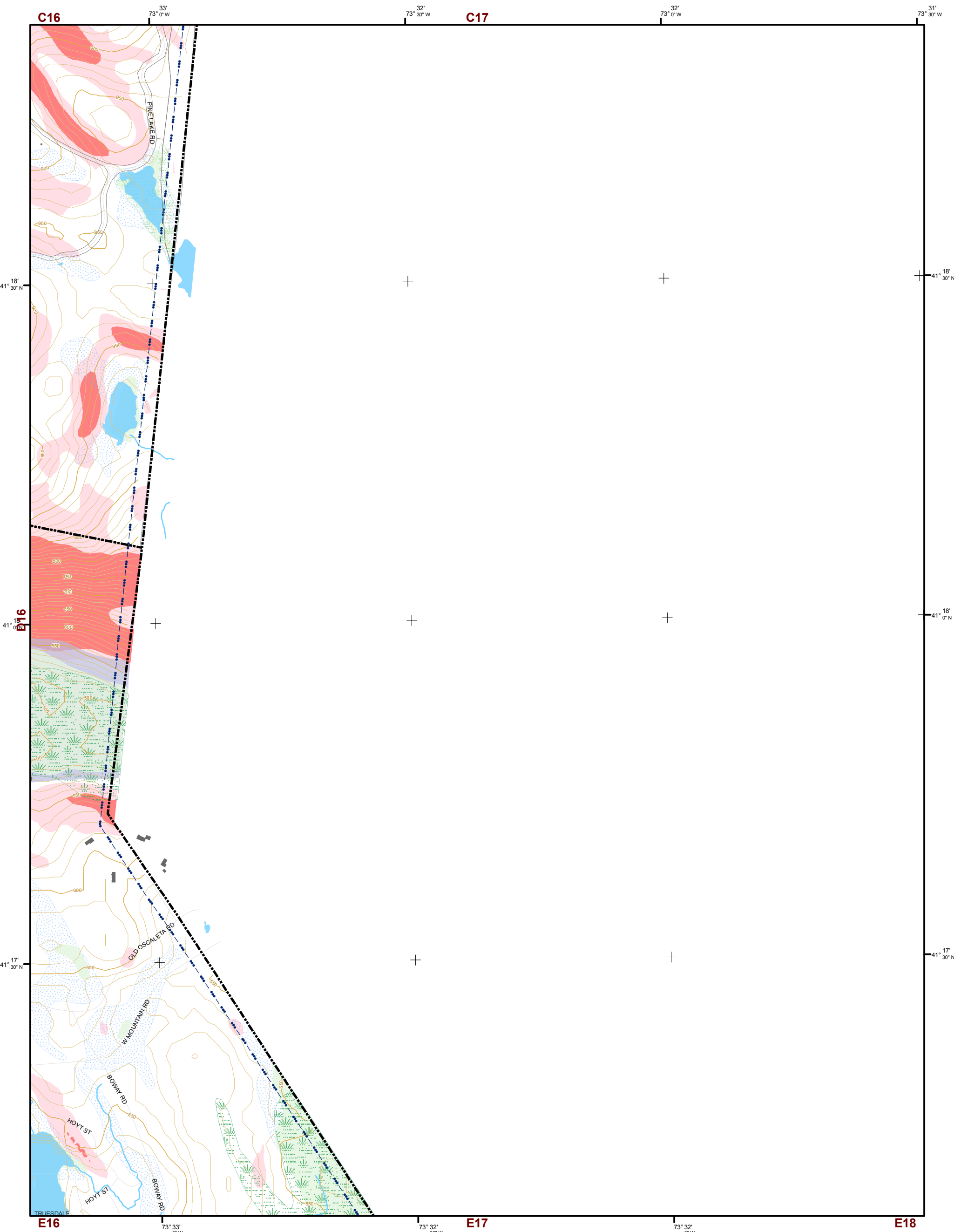
- NYSDEC Wetlands
 - Greater than 12.4 acres
 - Less than 12.4 acres
- Floodplains
 - 100
 - 500

B12	B13	B14	B15	B16	B17
C12	C13	C14	C15	C16	C17
D12	D13	D14	D15	D16	D17
E12	E13	E14	E15	E16	E17

This map is for general information only and should not be used for site specific planning. Data was collected from a wide range of local, state, and federal GIS databases "as is." Westchester County assumes no liability to any party for any loss or damage caused by errors or omissions resulting from negligence, accident or any other cause.



Westchester County Board of Legislators
Andrew J. Span, Westchester County Executive



1 inch equals 800 feet

Natural Resource Inventory

Town of North Salem

Map # D17

Legend

- 10' TOPO
- 50' TOPO
- Streams
- Lakes, Ponds or Reservoirs
- Aquifer
- Drainage Divides
- Hydric Soils
- Municipal Boundaries
- Tax Parcels
- Buildings
- 15% - 25%
- Over 25%
- National Wetlands Inventory
- NYSDEC Wetlands
Greater than 12.4 acres
- NYSDEC Wetlands
Less than 12.4 acres
- Floodplains
100
- Floodplains
500

TILE INDEX

B12	B13	B14	B15	B16	B17
C12	C13	C14	C15	C16	C17
D12	D13	D14	D15	D16	D17
E12	E13	E14	E15	E16	E17

This map is for general information only and should not be used for site specific planning. Data was collected from a wide range of local, state, and federal GIS databases "as is." Westchester County assumes no liability to any party for any loss or damage caused by errors or omissions resulting from negligence, accident or any other cause.



Westchester
County Board of Legislators