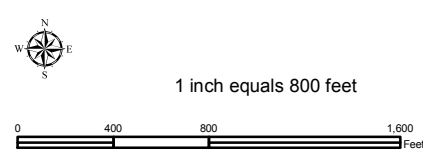
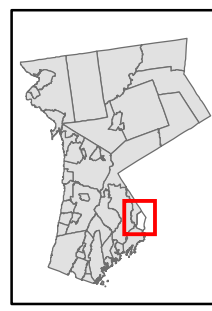


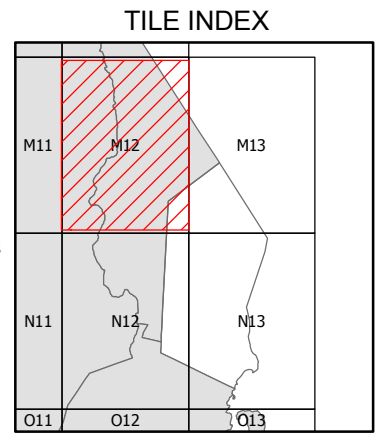
Natural Resource Inventory

Map # M12

Village of Port Chester



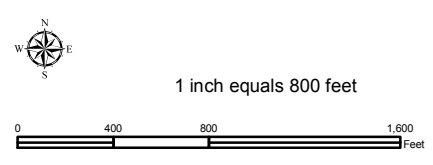
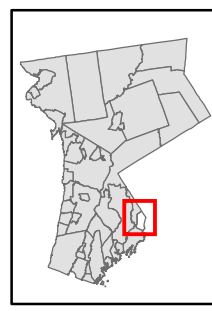
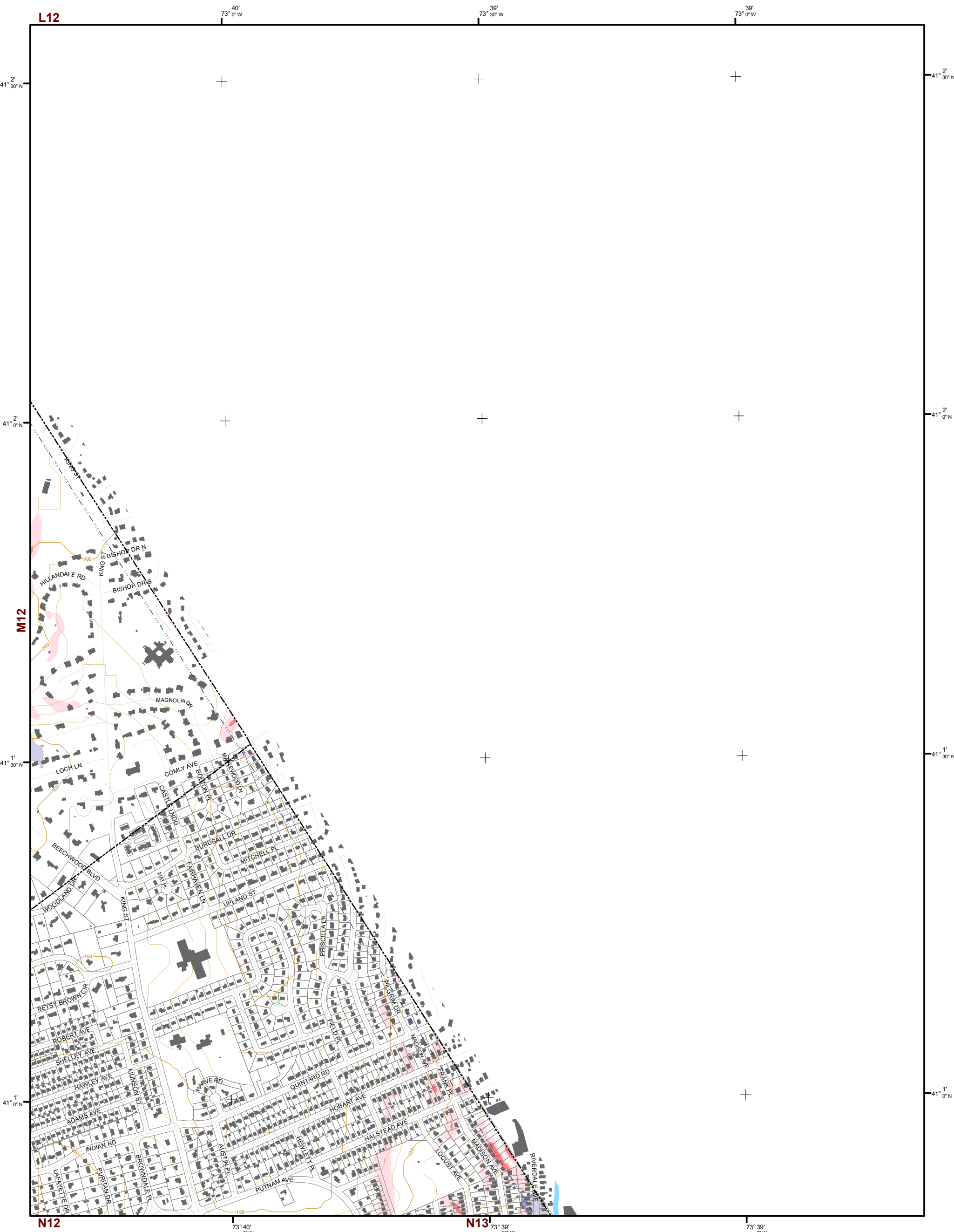
- Legend**
- 10' TOPO
 - 50' TOPO
 - Streams
 - Lakes, Ponds or Reservoirs
 - Aquifer
 - Drainage Divides
 - Hydric Soils
 - Municipal Boundaries
 - Tax Parcels
 - Buildings
 - Slope**
 - 15% - 25%
 - 25% and Over
 - National Wetlands Inventory
 - NYSDEC Wetlands**
 - Greater than 12.4 acres
 - Less than 12.4 acres
 - Floodplains**
 - 100
 - 500



This map is for general information only and should not be used for site specific planning. Data was collected from a wide range of local, state, and federal GIS databases "as is." Westchester County assumes no liability to any party for any loss or damage caused by errors or omissions resulting from negligence, accident or any other cause.



Westchester County Board of Legislators
 Andrew J. Span, Westchester County Executive



Natural Resource Inventory

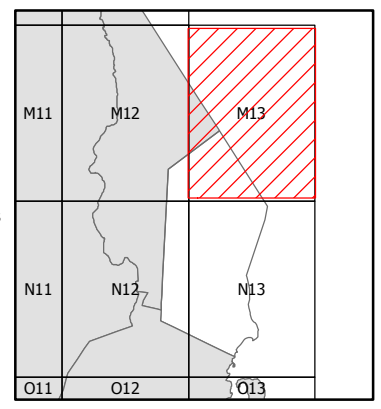
Village of Port Chester

Map # M13

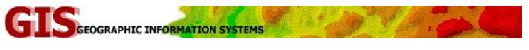
Legend

- 10' TOPO
- 50' TOPO
- Streams
- Lakes, Ponds or Reservoirs
- Aquifer
- Drainage Divides
- Hydric Soils
- Municipal Boundaries
- Tax Parcels
- Buildings
- Slope**
- 15% - 25%
- 25% and Over
- National Wetlands Inventory
- NYSDEC Wetlands**
- Greater than 12.4 acres
- Less than 12.4 acres
- Floodplains**
- 100
- 500

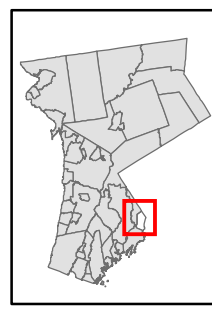
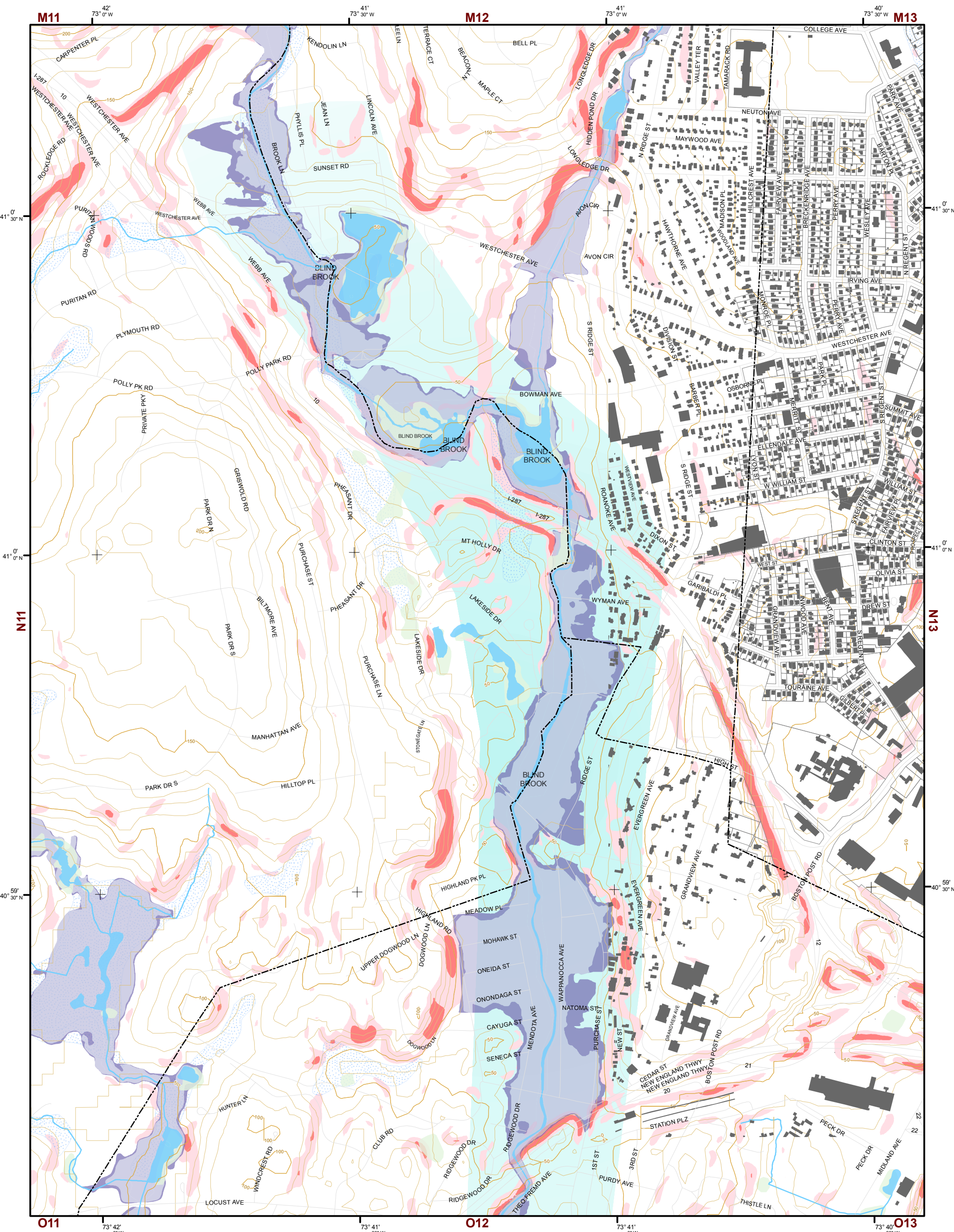
TILE INDEX



This map is for general information only and should not be used for site specific planning. Data was collected from a wide range of local, state, and federal GIS databases "as is." Westchester County assumes no liability to any party for any loss or damage caused by errors or omissions resulting from negligence, accident or any other cause.



Westchester County Board of Legislators
 Andrew J. Spano, Westchester County Executive

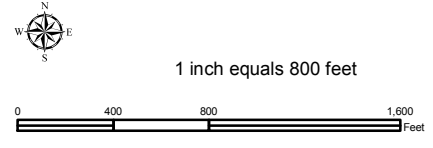


Natural Resource Inventory

Village of Port Chester

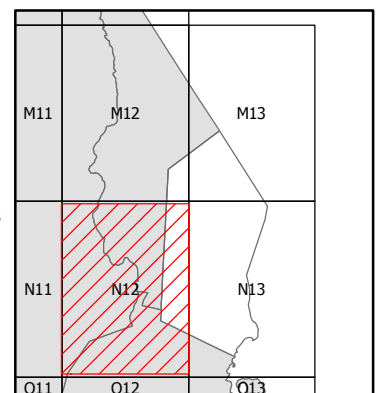
Map # N12

TILE INDEX



Legend

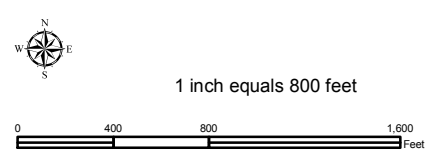
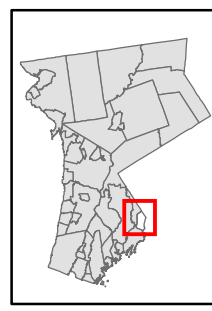
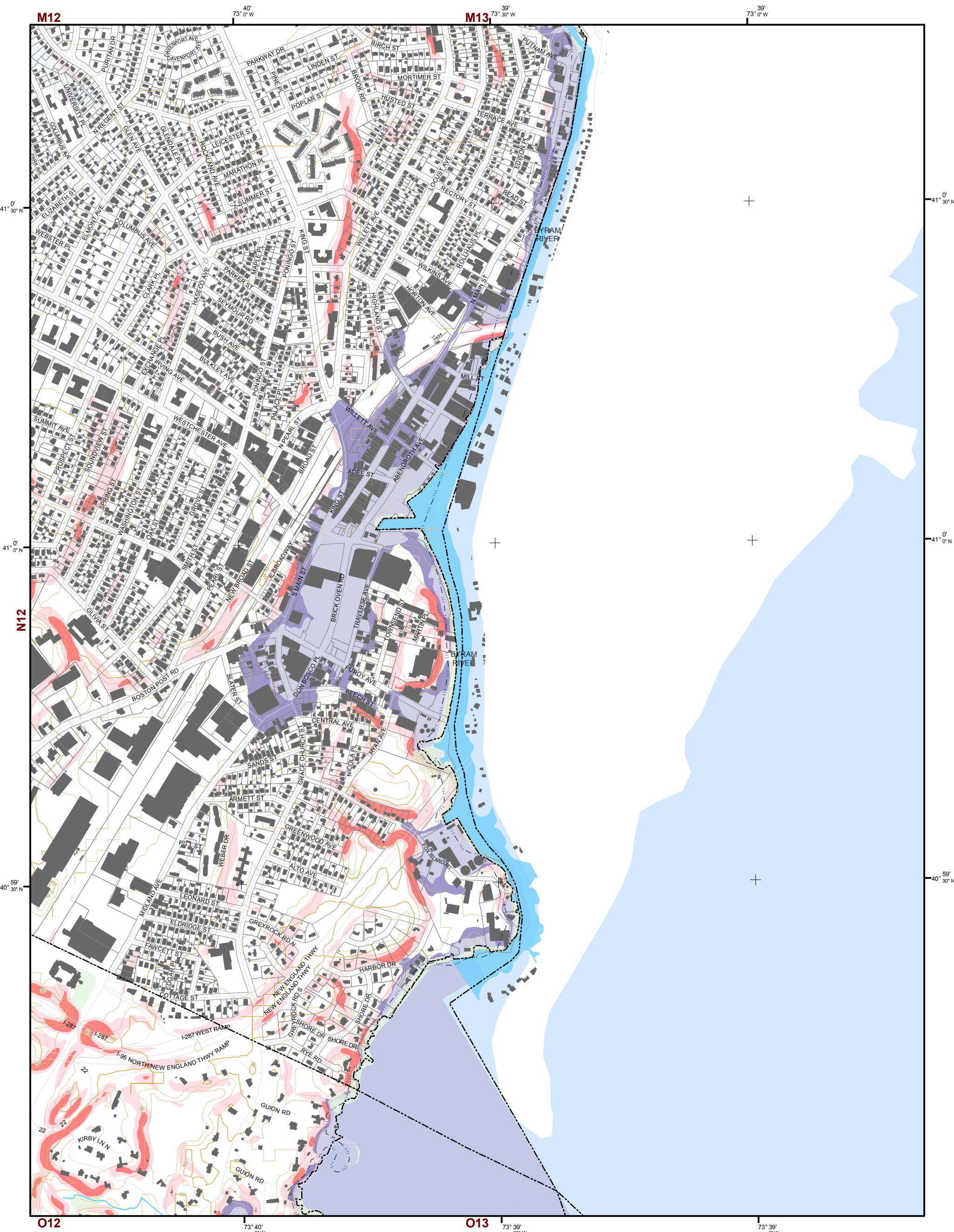
- 10' TOPO
- 50' TOPO
- Streams
- Lakes, Ponds or Reservoirs
- Aquifer
- Drainage Divides
- Hydic Soils
- Municipal Boundaries
- Tax Parcels
- Buildings
- Slope 15% - 25%
- Slope 25% and Over
- NYSDEC Wetlands Greater than 12.4 acres
- NYSDEC Wetlands Less than 12.4 acres
- Floodplains 100
- Floodplains 500
- National Wetlands Inventory



This map is for general information only and should not be used for site specific planning. Data was collected from a wide range of local, state, and federal GIS databases "as is." Westchester County assumes no liability to any party for any loss or damage caused by errors or omissions resulting from negligence, accident or any other cause.



Westchester County Board of Legislators
Andrew J. Span, Westchester County Executive



Natural Resource Inventory

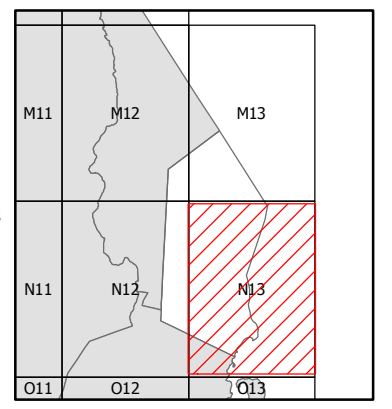
Village of Port Chester

Map # N13

Legend

- 10' TOPO
- 50' TOPO
- Streams
- Lakes, Ponds or Reservoirs
- Aquifer
- Drainage Divides
- Hydric Soils
- Municipal Boundaries
- Tax Parcels
- Buildings
- Slope 15% - 25%
- Slope 25% and Over
- National Wetlands Inventory
- NYSDEC Wetlands Greater than 12.4 acres
- NYSDEC Wetlands Less than 12.4 acres
- Floodplains 100
- Floodplains 500

TILE INDEX



This map is for general information only and should not be used for site specific planning. Data was collected from a wide range of local, state, and federal GIS databases "as is." Westchester County assumes no liability to any party for any loss or damage caused by errors or omissions resulting from negligence, accident or any other cause.



Westchester County Board of Legislators
Andrew J. Span, Westchester County Executive