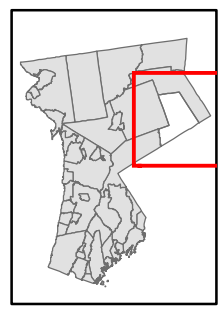


Natural Resource Inventory

Town of Pound Ridge

Map # E14

TILE INDEX



1 inch equals 800 feet



Legend

- 10' TOPO
- 50' TOPO
- Streams
- Lakes, Ponds or Reservoirs
- Aquifer
- Drainage Divides
- Hydric Soils
- Municipal Boundaries
- Tax Parcels
- Buildings
- 15% - 25%
- Over 25%
- National Wetlands Inventory

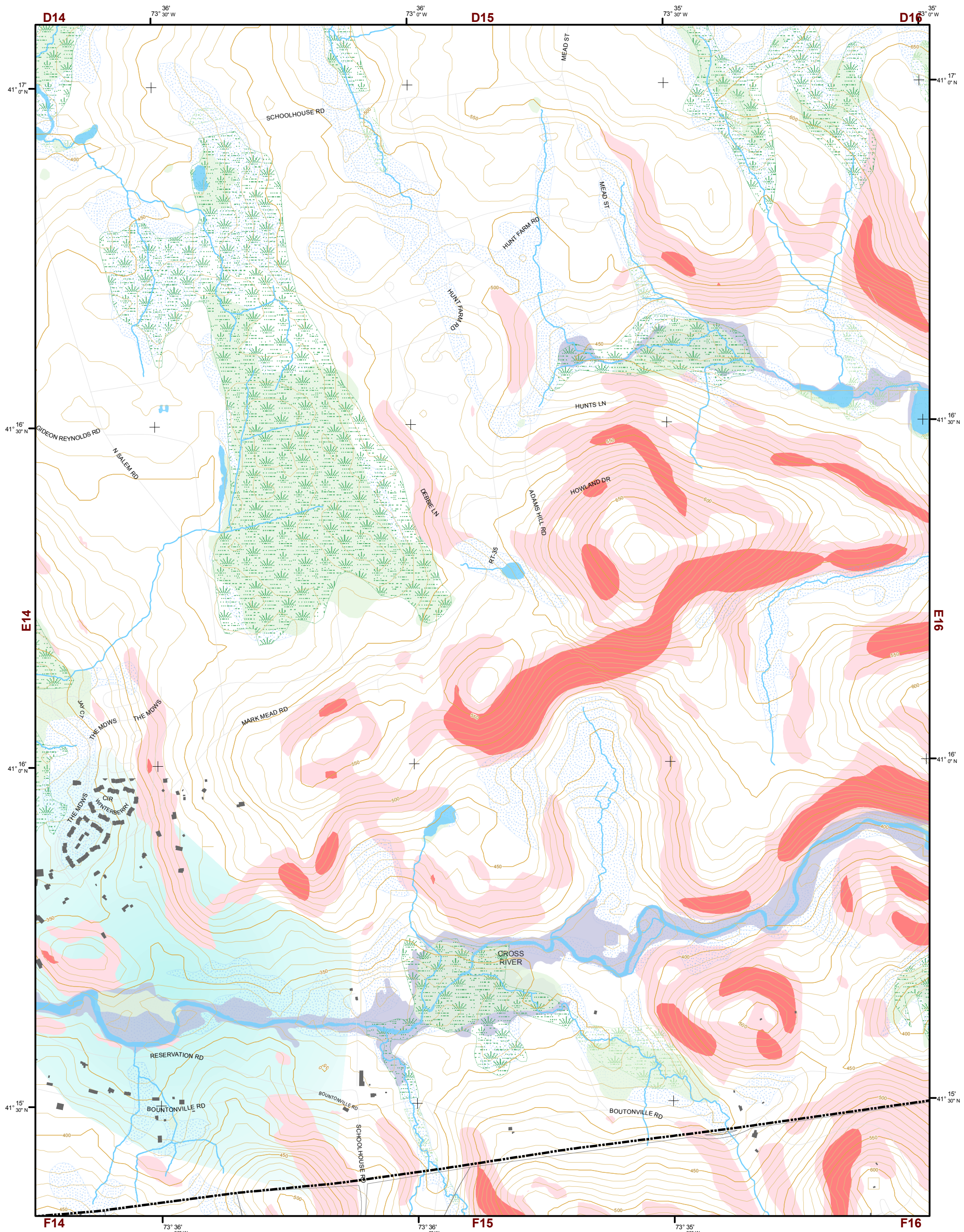
- NYSDEC Wetlands
 - Greater than 12.4 acres
 - Less than 12.4 acres
- Floodplains
 - 100
 - 500

D13	D14	D15	D16	D17					
E13	E14	E15	E16	E17	E18				
F13	F14	F15	F16	F17	F18	F19			
G13	G14	G15	G16	G17	G18	G19			
H13	H14	H15	H16	H17					
I13	I14	I15							
J13									

This map is for general information only and should not be used for site specific planning. Data was collected from a wide range of local, state, and federal GIS databases "as is." Westchester County assumes no liability to any party for any loss or damage caused by errors or omissions resulting from negligence, accident or any other cause.



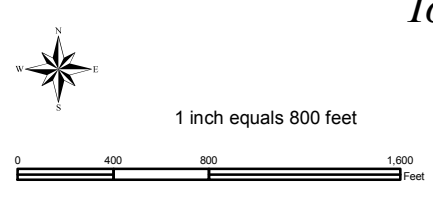
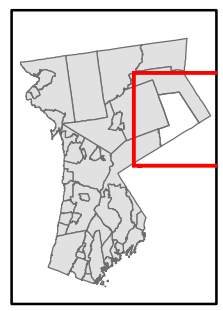
Westchester County Board of Legislators
 Andrew J. Span, Westchester County Executive



Natural Resource Inventory

Town of Pound Ridge

Map # E15



Legend

- 10' TOPO
- 50' TOPO
- Streams
- Lakes, Ponds or Reservoirs
- Aquifer
- Drainage Divides
- Hydric Soils
- Municipal Boundaries
- Tax Parcels
- Buildings
- 15% - 25%
- Over 25%
- National Wetlands Inventory
- Floodplains 100
- Floodplains 500
- NYSDEC Wetlands Greater than 12.4 acres
- NYSDEC Wetlands Less than 12.4 acres

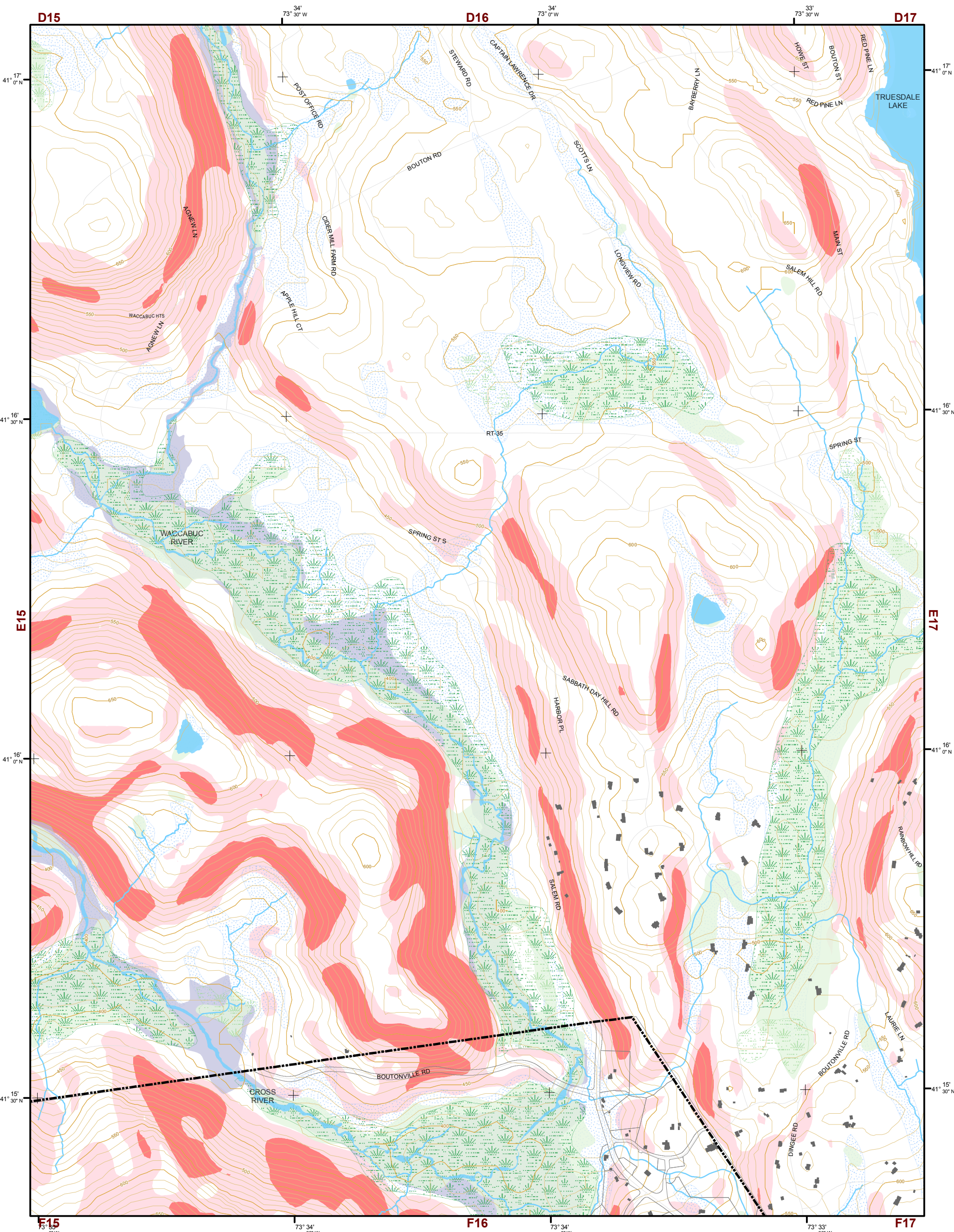
TILE INDEX

D13	D14	D15	D16	D17		
E13	E14	E15	E16	E17	E18	
F13	F14	F15	F16	F17	F18	F19
G13	G14	G15	G16	G17	G18	G19
H13	H14	H15	H16	H17		
I13	I14	I15				
J13						

This map is for general information only and should not be used for site specific planning. Data was collected from a wide range of local, state, and federal GIS databases "as is." Westchester County assumes no liability to any party for any loss or damage caused by errors or omissions resulting from negligence, accident or any other cause.



Westchester County Board of Legislators
 Andrew J. Spano, Westchester County Executive



Natural Resource Inventory

Town of Pound Ridge

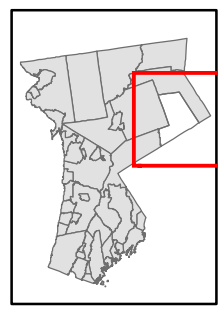
Map # E16

TILE INDEX

D13	D14	D15	D16	D17
E13	E14	E15	E16	E17
F13	F14	F15	F16	F17
G13	G14	G15	G16	G17
H13	H14	H15	H16	H17
I13	I14	I15		
J13				

Legend

- 10' TOPO
- 50' TOPO
- Streams
- Lakes, Ponds or Reservoirs
- Aquifer
- Drainage Divides
- Hydric Soils
- Municipal Boundaries
- Tax Parcels
- Buildings
- 15% - 25%
- Over 25%
- National Wetlands Inventory
- Greater than 12.4 acres
- Less than 12.4 acres
- 100
- 500

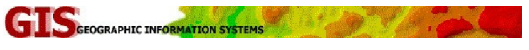


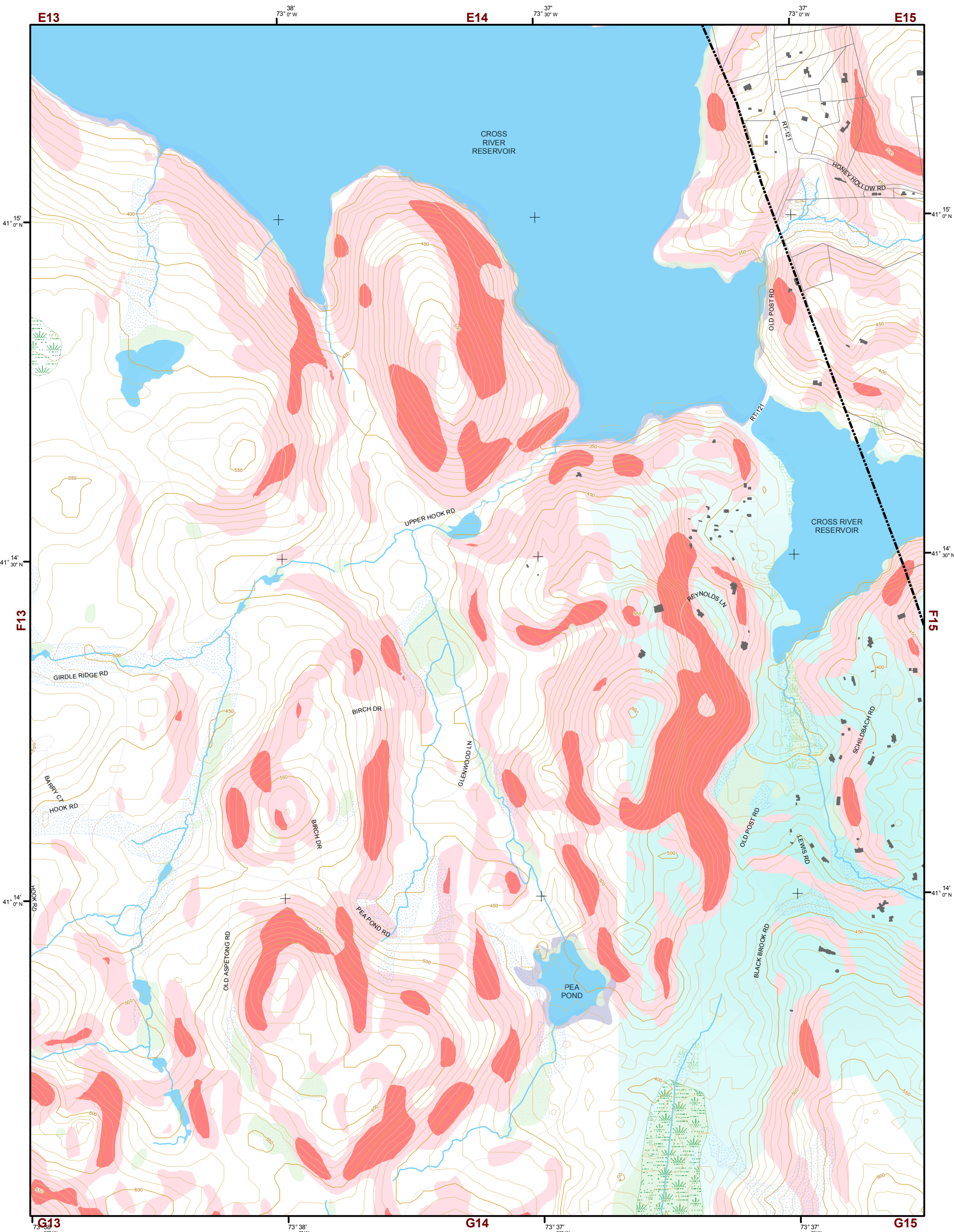
1 inch equals 800 feet



This map is for general information only and should not be used for site specific planning. Data was collected from a wide range of local, state, and federal GIS databases "as is." Westchester County assumes no liability to any party for any loss or damage caused by errors or omissions resulting from negligence, accident or any other cause.

Westchester County Board of Legislators
Andrew J. Spano, Westchester County Executive





Natural Resource Inventory

Town of Pound Ridge

Map # F14

TILE INDEX

D13	D14	D15	D16	D17		
E13	E14	E15	E16	E17	E18	
F13	F14	F15	F16	F17	F18	F19
G13	G14	G15	G16	G17	G18	G19
H13	H14	H15	H16	H17		
I13	I14	I15				
J13						

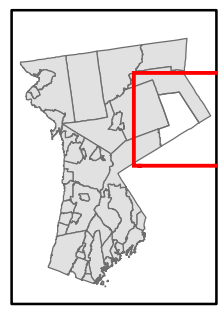
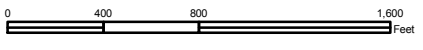
Legend

- 10' TOPO
- 50' TOPO
- Streams
- Lakes, Ponds or Reservoirs
- Aquifer
- Drainage Divides
- Hydric Soils
- Municipal Boundaries
- Tax Parcels
- Buildings
- 15% - 25%
- Over 25%
- National Wetlands Inventory

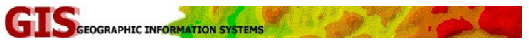
- NYSDEC Wetlands
 - Greater than 12.4 acres
 - Less than 12.4 acres
- Floodplains
 - 100
 - 500



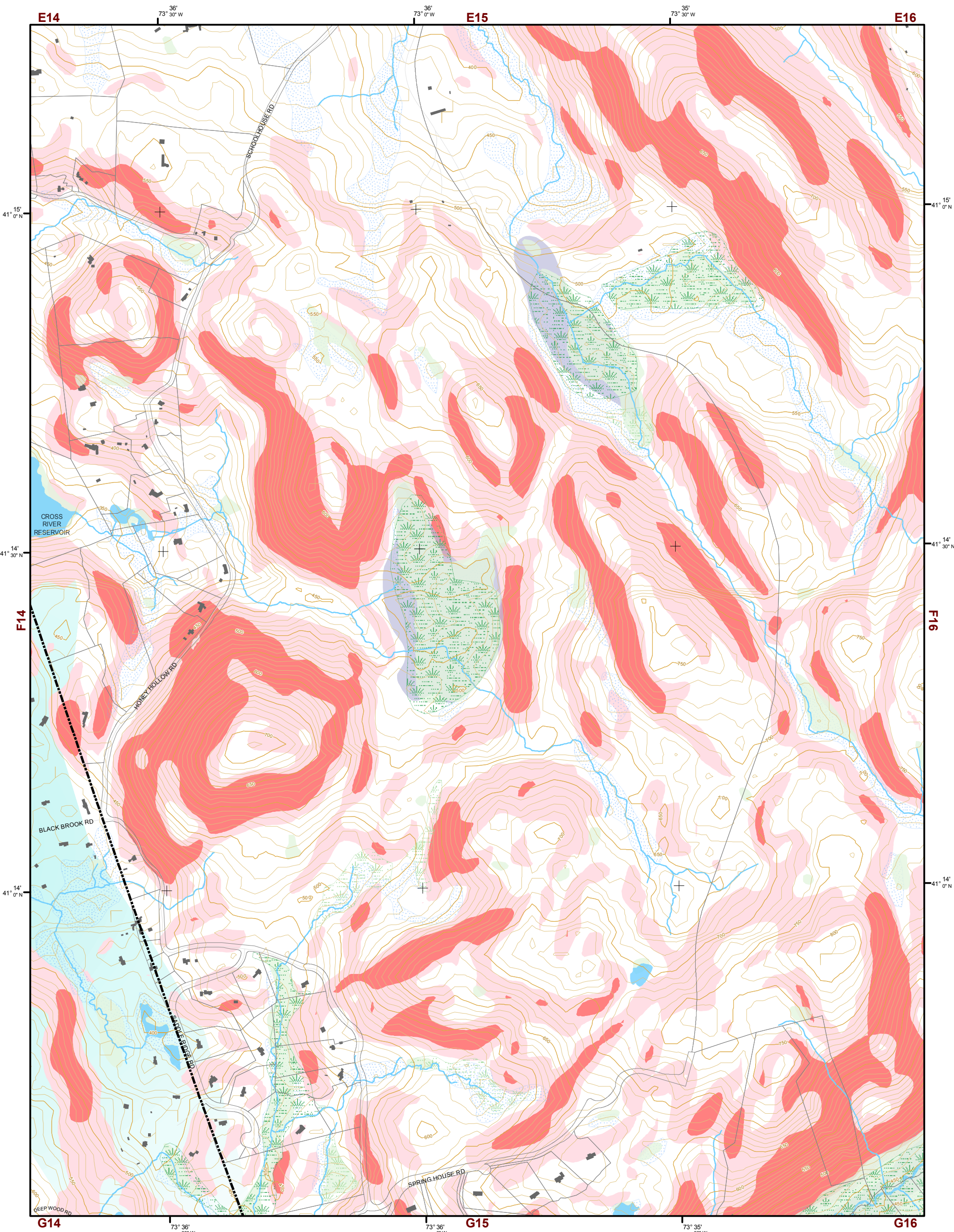
1 inch equals 800 feet



This map is for general information only and should not be used for site specific planning. Data was collected from a wide range of local, state, and federal GIS databases "as is." Westchester County assumes no liability to any party for any loss or damage caused by errors or omissions resulting from negligence, accident or any other cause.

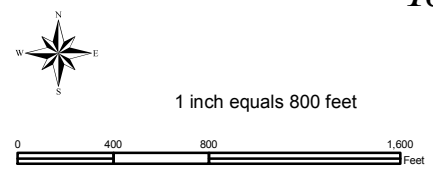
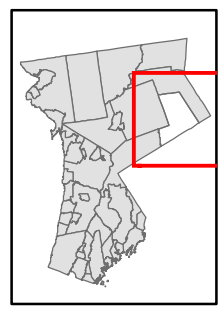


Westchester County Board of Legislators
Andrew J. Span, Westchester County Executive



Natural Resource Inventory Map # F15

Town of Pound Ridge



Legend

- 10' TOPO
- 50' TOPO
- Streams
- Lakes, Ponds or Reservoirs
- Aquifer
- Drainage Divides
- Hydric Soils
- Municipal Boundaries
- Tax Parcels
- Buildings
- 15% - 25%
- Over 25%
- National Wetlands Inventory
- Floodplains 100
- Floodplains 500
- NYSDEC Wetlands Greater than 12.4 acres
- NYSDEC Wetlands Less than 12.4 acres

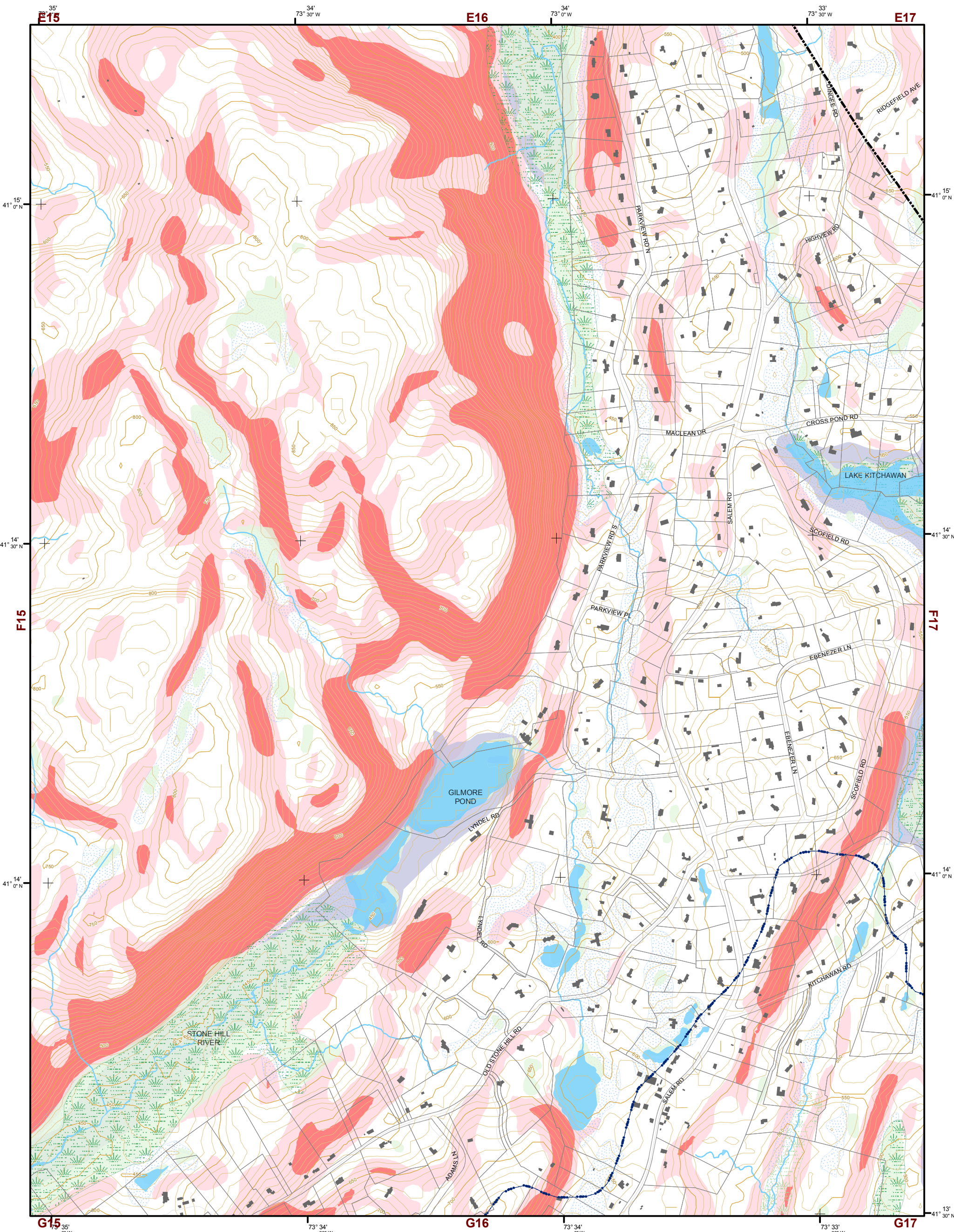
TILE INDEX

D13	D14	D15	D16	D17		
E13	E14	E15	E16	E17	E18	
F13	F14	F15	F16	F17	F18	F19
G13	G14	G15	G16	G17	G18	G19
H13	H14	H15	H16	H17		
I13	I14	I15				
J13						

This map is for general information only and should not be used for site specific planning. Data was collected from a wide range of local, state, and federal GIS databases "as is." Westchester County assumes no liability to any party for any loss or damage caused by errors or omissions resulting from negligence, accident or any other cause.



Westchester County Board of Legislators
Andrew J. Span, Westchester County Executive



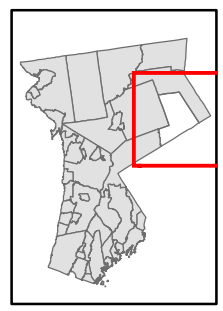
Natural Resource Inventory

Town of Pound Ridge

Map # F16

TILE INDEX

D13	D14	D15	D16	D17		
E13	E14	E15	E16	E17	E18	
F13	F14	F15	F16	F17	F18	F19
G13	G14	G15	G16	G17	G18	G19
H13	H14	H15	H16	H17		
I13	I14	I15				
J13						



1 inch equals 800 feet



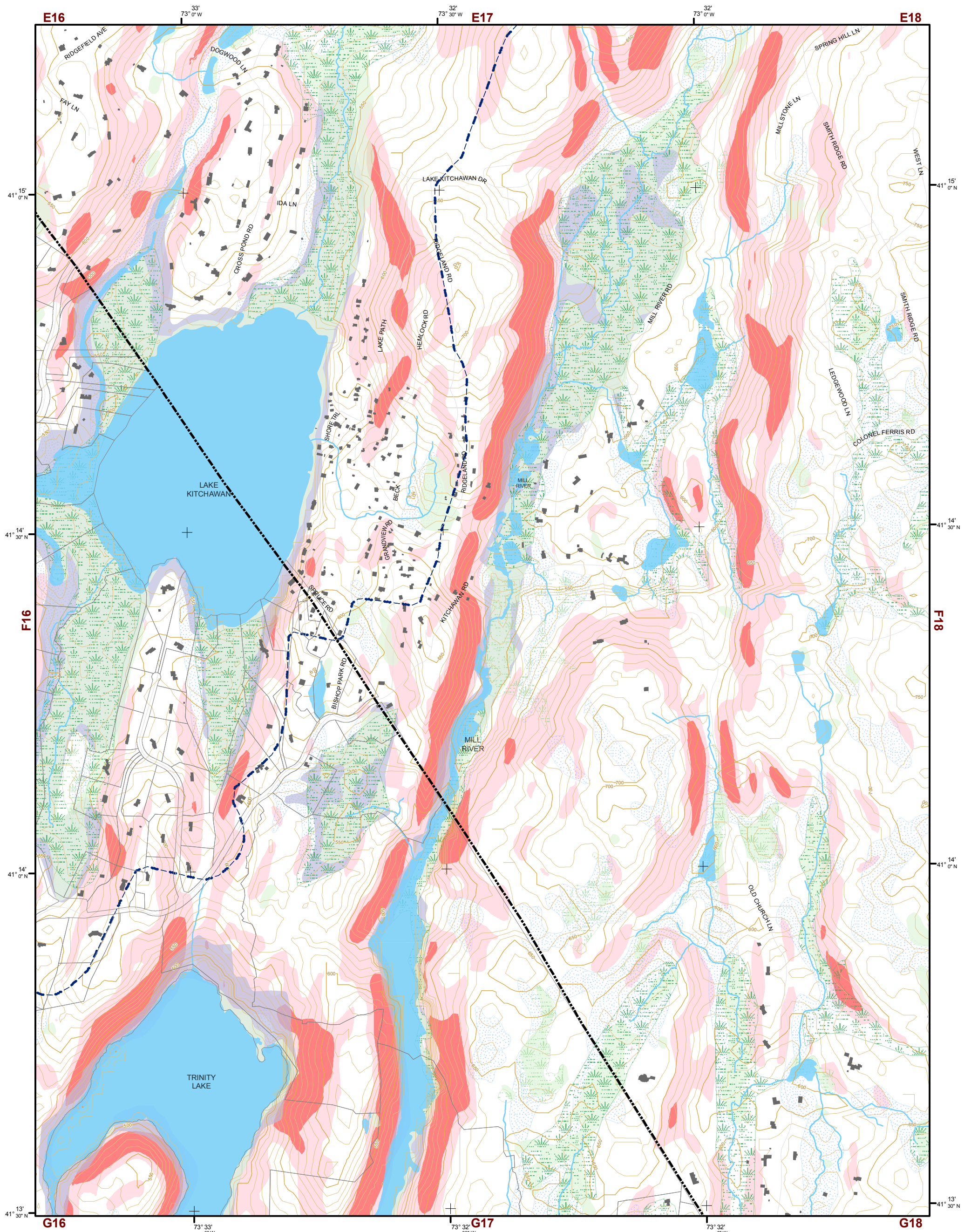
Legend

- 10' TOPO
- 50' TOPO
- Streams
- Lakes, Ponds or Reservoirs
- Aquifer
- Drainage Divides
- Hydric Soils
- Municipal Boundaries
- Tax Parcels
- Buildings
- 15% - 25%
- Over 25%
- National Wetlands Inventory
- Greater than 12.4 acres
- Less than 12.4 acres
- Floodplains 100
- Floodplains 500

This map is for general information only and should not be used for site specific planning. Data was collected from a wide range of local, state, and federal GIS databases "as is." Westchester County assumes no liability to any party for any loss or damage caused by errors or omissions resulting from negligence, accident or any other cause.

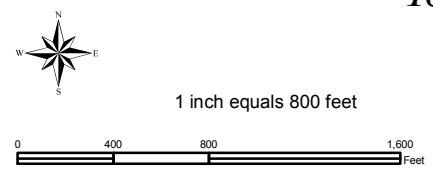
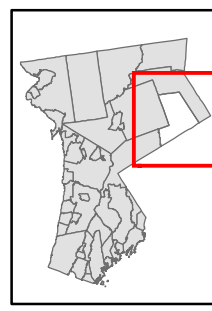
Westchester County Board of Legislators
 Andrew J. Span, Westchester County Executive





Natural Resource Inventory Map # F17

Town of Pound Ridge



Legend

- 10' TOPO
- 50' TOPO
- Streams
- Lakes, Ponds or Reservoirs
- Aquifer
- Drainage Divides
- Hydric Soils
- Municipal Boundaries
- Tax Parcels
- Buildings
- 15% - 25%
- Over 25%
- National Wetlands Inventory
- NYSDEC Wetlands
Greater than 12.4 acres
- NYSDEC Wetlands
Less than 12.4 acres
- Floodplains
100
- Floodplains
500

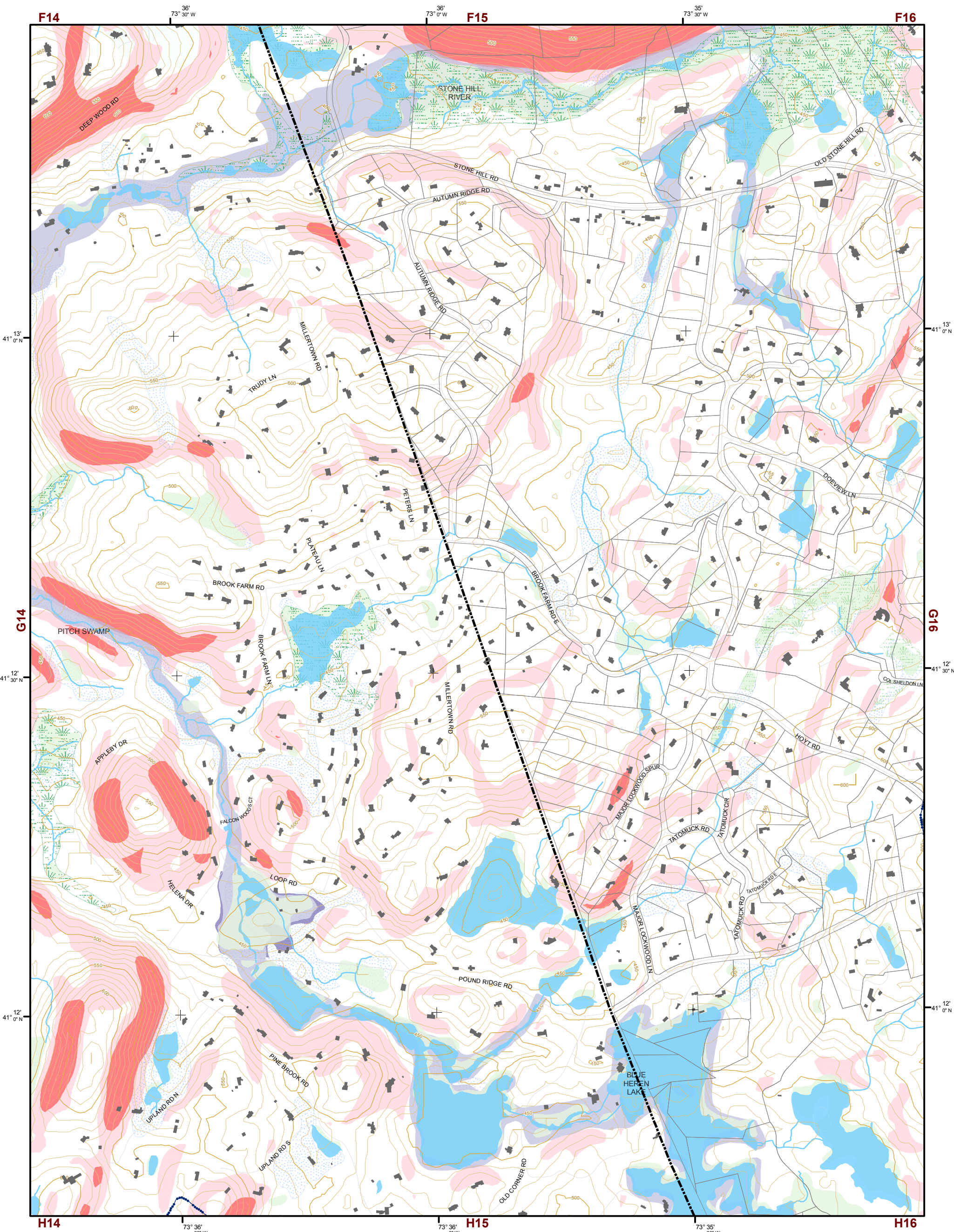
TILE INDEX

D13	D14	D15	D16	D17		
E13	E14	E15	E16	E17	E18	
F13	F14	F15	F16	F17	F18	F19
G13	G14	G15	G16	G17	G18	G19
H13	H14	H15	H16	H17		
I13	I14	I15				
J13						

This map is for general information only and should not be used for site specific planning. Data was collected from a wide range of local, state, and federal GIS databases "as is." Westchester County assumes no liability to any party for any loss or damage caused by errors or omissions resulting from negligence, accident or any other cause.



Westchester County Board of Legislators
Andrew J. Span, Westchester County Executive



Natural Resource Inventory

Town of Pound Ridge

Map # **G15**

TILE INDEX

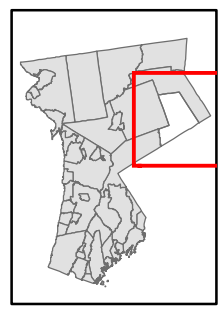
D13	D14	D15	D16	D17		
E13	E14	E15	E16	E17	E18	
F13	F14	F15	F16	F17	F18	F19
G13	G14	G15	G16	G17	G18	G19
H13	H14	H15	H16	H17		
I13	I14	I15				
J13						

Legend

- 10' TOPO
- 50' TOPO
- Streams
- Lakes, Ponds or Reservoirs
- Aquifer
- Drainage Divides
- Hydic Soils
- Municipal Boundaries
- Tax Parcels
- Buildings
- 15% - 25%
- Over 25%
- National Wetlands Inventory
- Greater than 12.4 acres
- Less than 12.4 acres
- Floodplains 100
- Floodplains 500



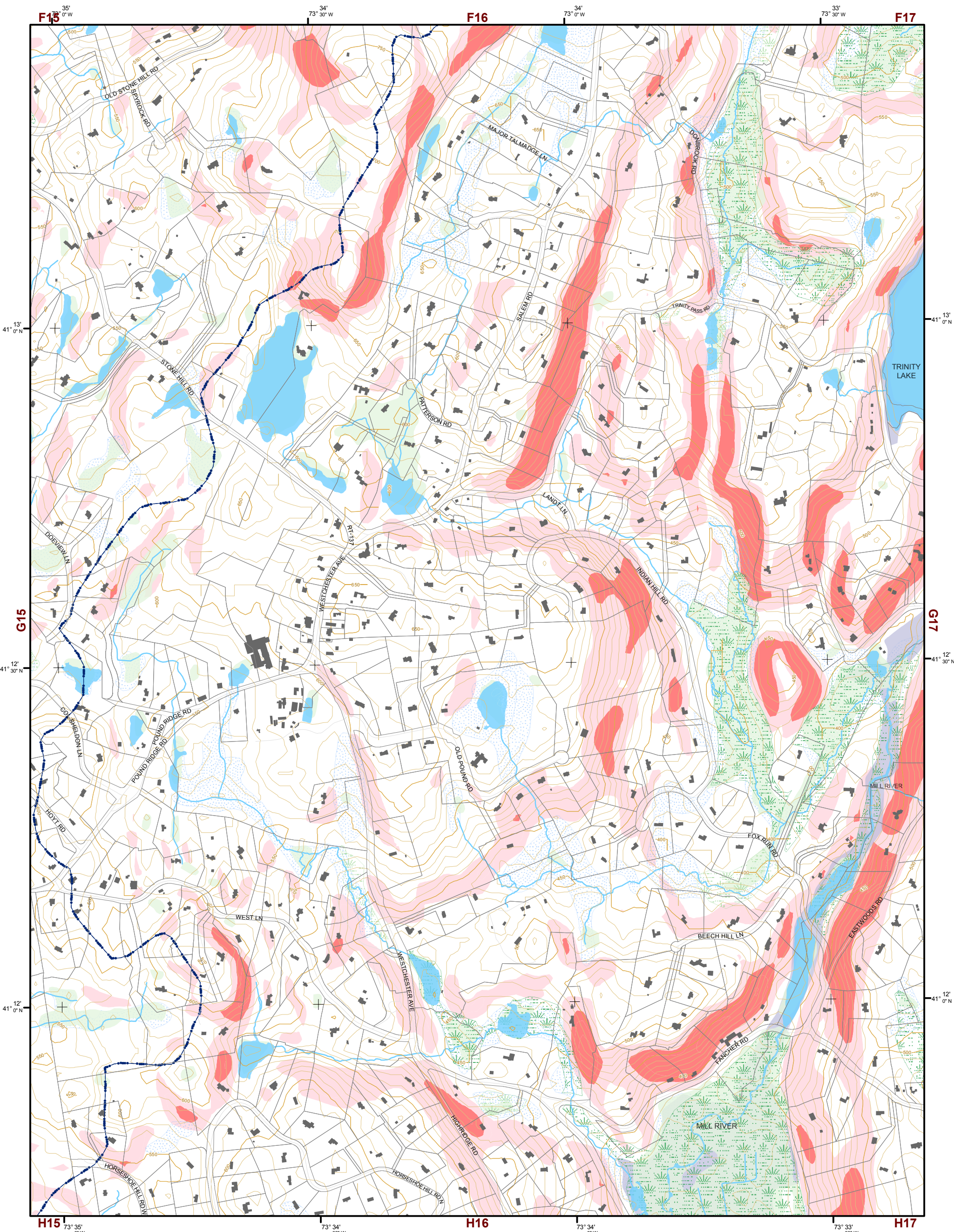
1 inch equals 800 feet



This map is for general information only and should not be used for site specific planning. Data was collected from a wide range of local, state, and federal GIS databases "as is." Westchester County assumes no liability to any party for any loss or damage caused by errors or omissions resulting from negligence, accident or any other cause.



Westchester County Board of Legislators
Andrew J. Span, Westchester County Executive



Natural Resource Inventory

Town of Pound Ridge

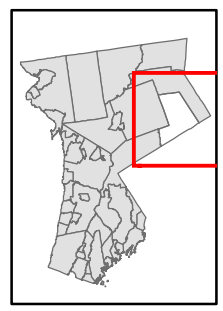
Map # G16

TILE INDEX

D13	D14	D15	D16	D17		
E13	E14	E15	E16	E17	E18	
F13	F14	F15	F16	F17	F18	F19
G13	G14	G15	G16	G17	G18	G19
H13	H14	H15	H16	H17		
I13	I14	I15				
J13						

Legend

- 10' TOPO
- 50' TOPO
- Streams
- Lakes, Ponds or Reservoirs
- Aquifer
- Drainage Divides
- Hydric Soils
- Municipal Boundaries
- Tax Parcels
- Buildings
- 15% - 25%
- Over 25%
- NYSDEC Wetlands
Greater than 12.4 acres
- NYSDEC Wetlands
Less than 12.4 acres
- Floodplains
100
- Floodplains
500
- National Wetlands Inventory



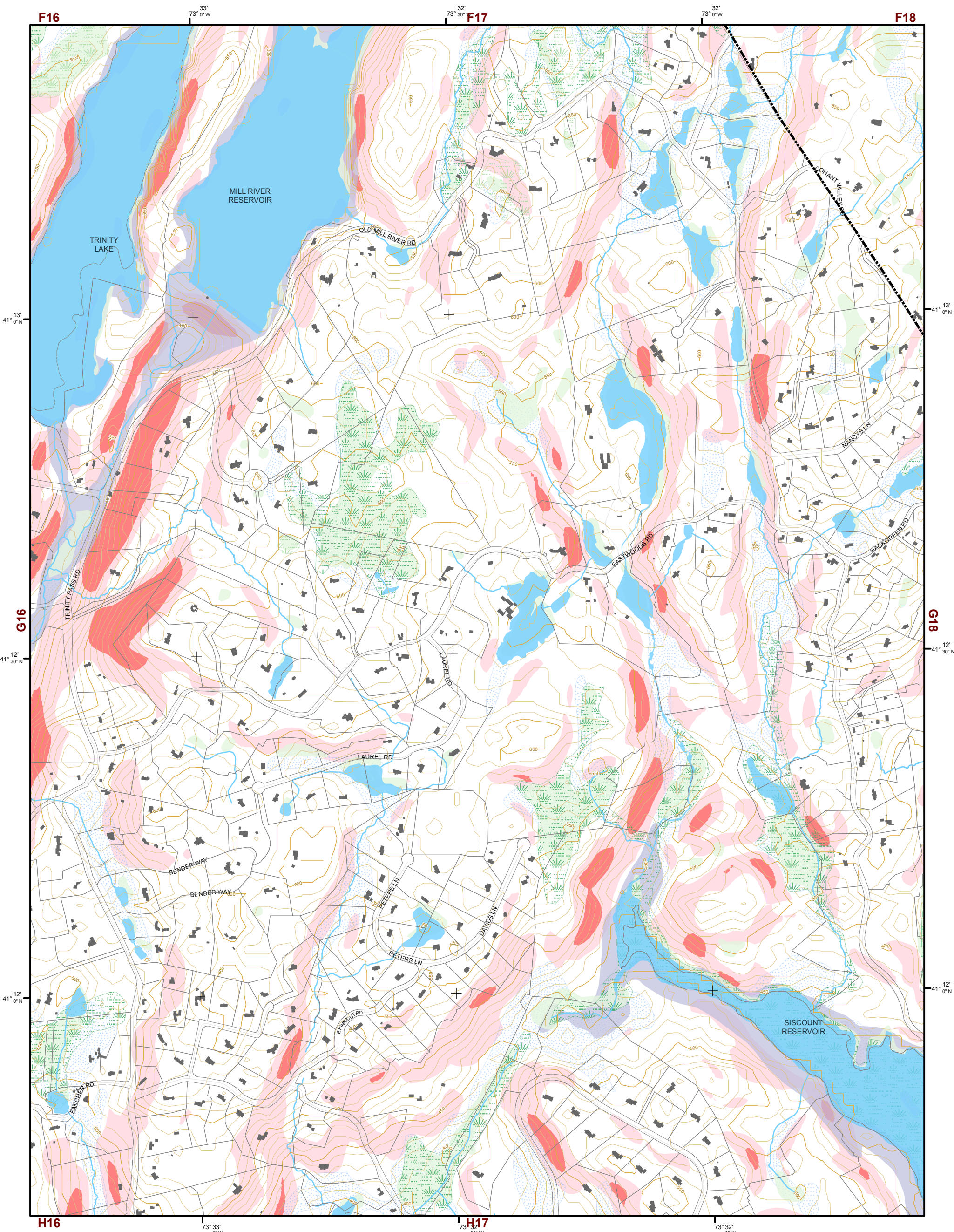
1 inch equals 800 feet



This map is for general information only and should not be used for site specific planning. Data was collected from a wide range of local, state, and federal GIS databases "as is." Westchester County assumes no liability to any party for any loss or damage caused by errors or omissions resulting from negligence, accident or any other cause.

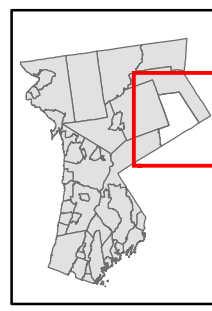
Westchester County Board of Legislators
Andrew J. Span, Westchester County Executive





Natural Resource Inventory Map # G17

Town of Pound Ridge



1 inch equals 800 feet



Legend

- 10' TOPO
- 50' TOPO
- Streams
- Lakes, Ponds or Reservoirs
- Aquifer
- Drainage Divides
- Hydric Soils
- Municipal Boundaries
- Tax Parcels
- Buildings
- 15% - 25%
- Over 25%
- National Wetlands Inventory
- NYSDEC Wetlands
Greater than 12.4 acres
- NYSDEC Wetlands
Less than 12.4 acres
- Floodplains
100
- Floodplains
500

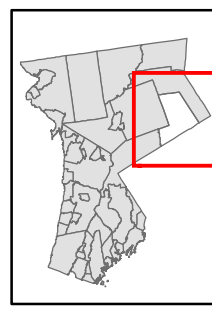
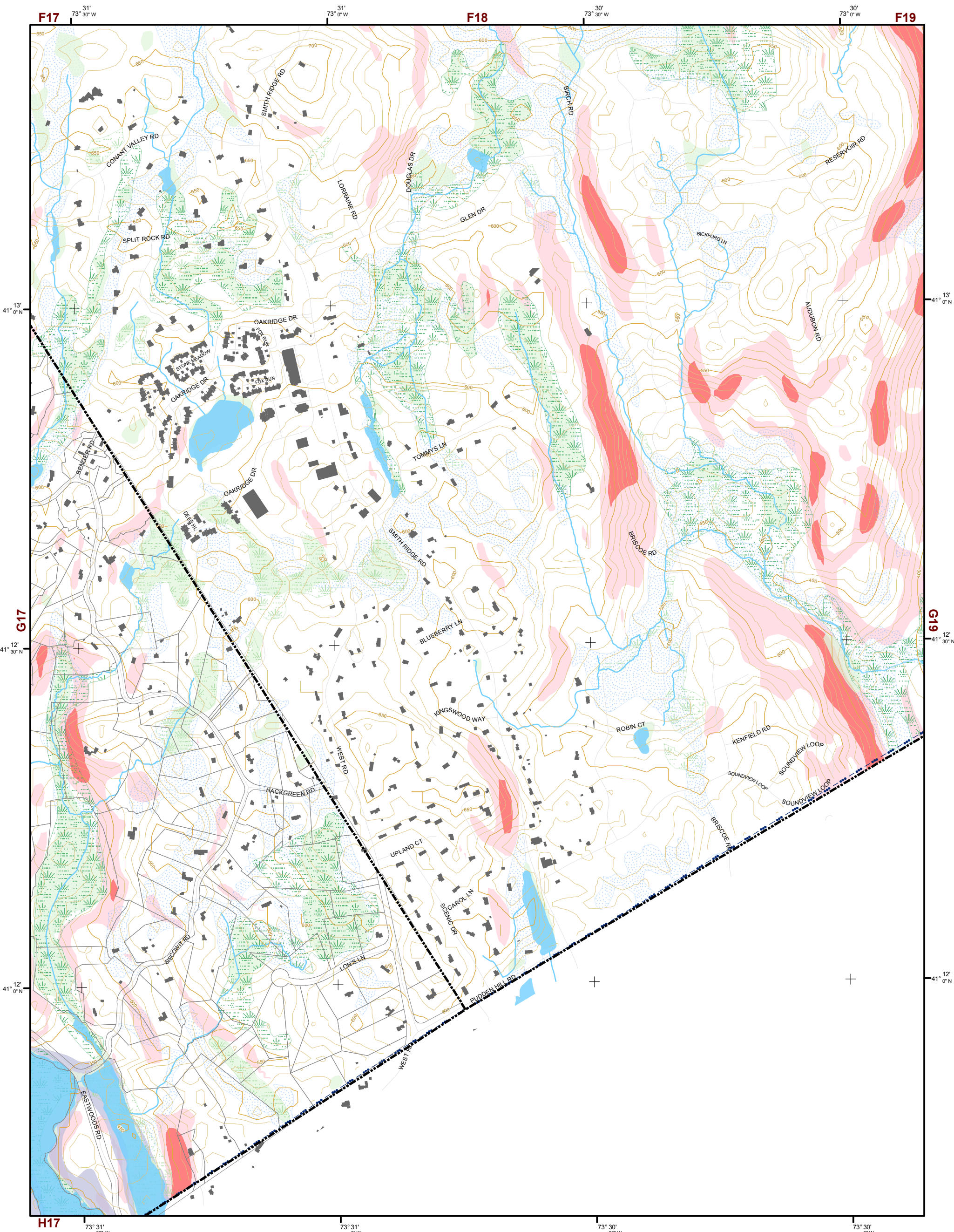
TILE INDEX

D13	D14	D15	D16	D17		
E13	E14	E15	E16	E17	E18	
F13	F14	F15	F16	F17	F18	F19
G13	G14	G15	G16	G17	G18	G19
H13	H14	H15	H16	H17		
I13	I14	I15				
J13						

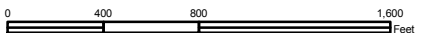
This map is for general information only and should not be used for site specific planning. Data was collected from a wide range of local, state, and federal GIS databases "as is." Westchester County assumes no liability to any party for any loss or damage caused by errors or omissions resulting from negligence, accident or any other cause.



Westchester County Board of Legislators
Andrew J. Span, Westchester County Executive



1 inch equals 800 feet



Natural Resource Inventory

Town of Pound Ridge

Map # G18

Legend

- 10' TOPO
- 50' TOPO
- Streams
- Lakes, Ponds or Reservoirs
- Aquifer
- Drainage Divides
- Hydic Soils
- Municipal Boundaries
- Tax Parcels
- Buildings
- 15% - 25%
- Over 25%
- National Wetlands Inventory

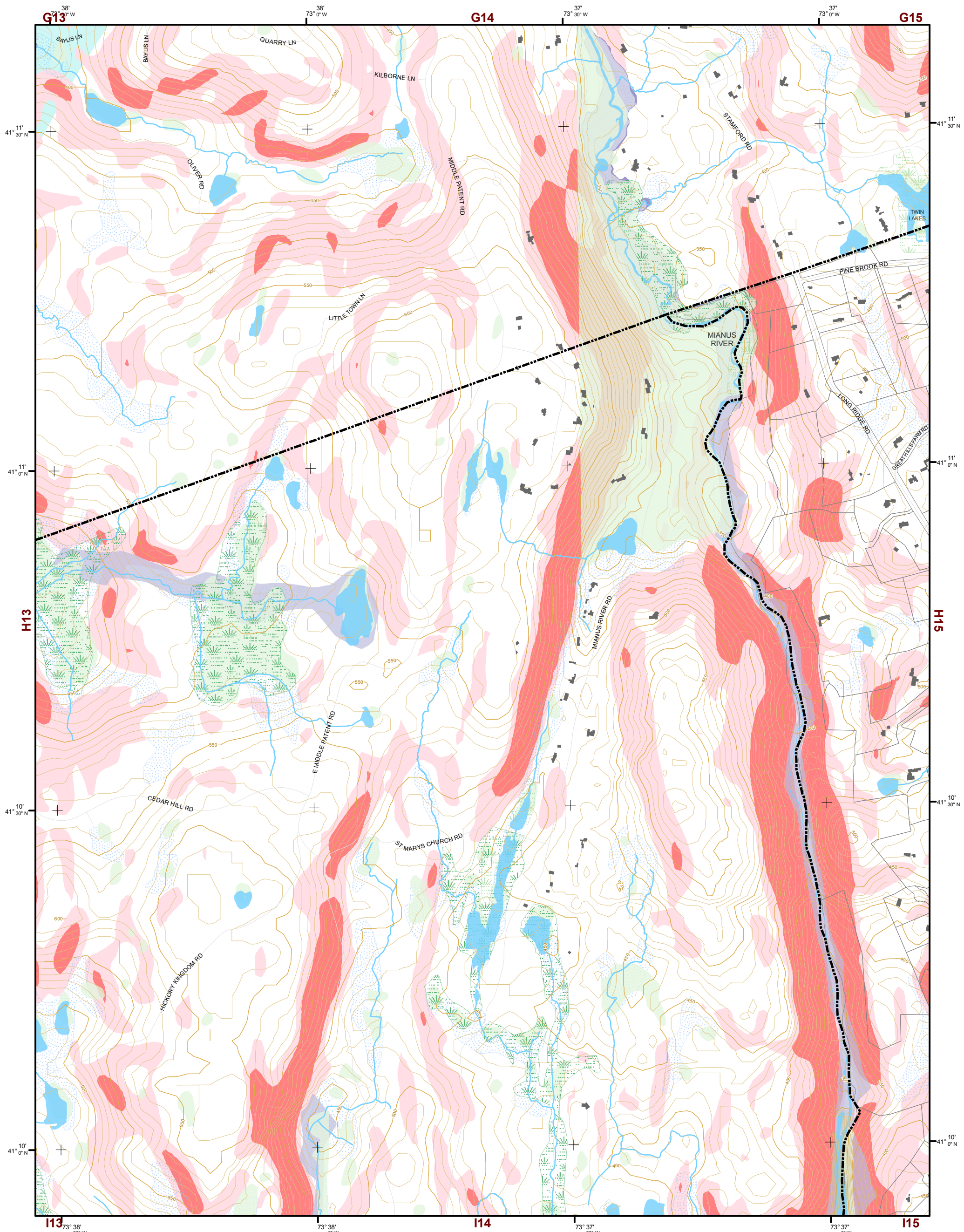
- NYSDEC Wetlands**
- Greater than 12.4 acres
- Less than 12.4 acres
- Floodplains**
- 100
- 500

TILE INDEX

D13	D14	D15	D16	D17		
E13	E14	E15	E16	E17	E18	
F13	F14	F15	F16	F17	F18	F19
G13	G14	G15	G16	G17	G18	G19
H13	H14	H15	H16	H17		
I13	I14	I15				
J13						

This map is for general information only and should not be used for site specific planning. Data was collected from a wide range of local, state, and federal GIS databases "as is." Westchester County assumes no liability to any party for any loss or damage caused by errors or omissions resulting from negligence, accident or any other cause.

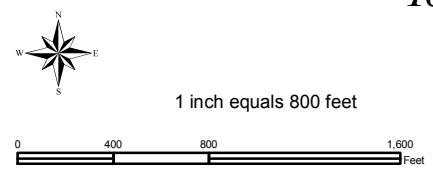
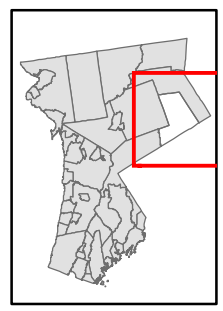




Natural Resource Inventory

Town of Pound Ridge

Map # H14



Legend

- 10' TOPO
- 50' TOPO
- Streams
- Lakes, Ponds or Reservoirs
- Aquifer
- Drainage Divides
- Hydric Soils
- Municipal Boundaries
- Tax Parcels
- Buildings
- 15% - 25%
- Over 25%
- National Wetlands Inventory
- NYSDEC Wetlands
Greater than 12.4 acres
- NYSDEC Wetlands
Less than 12.4 acres
- Floodplains
100
- Floodplains
500

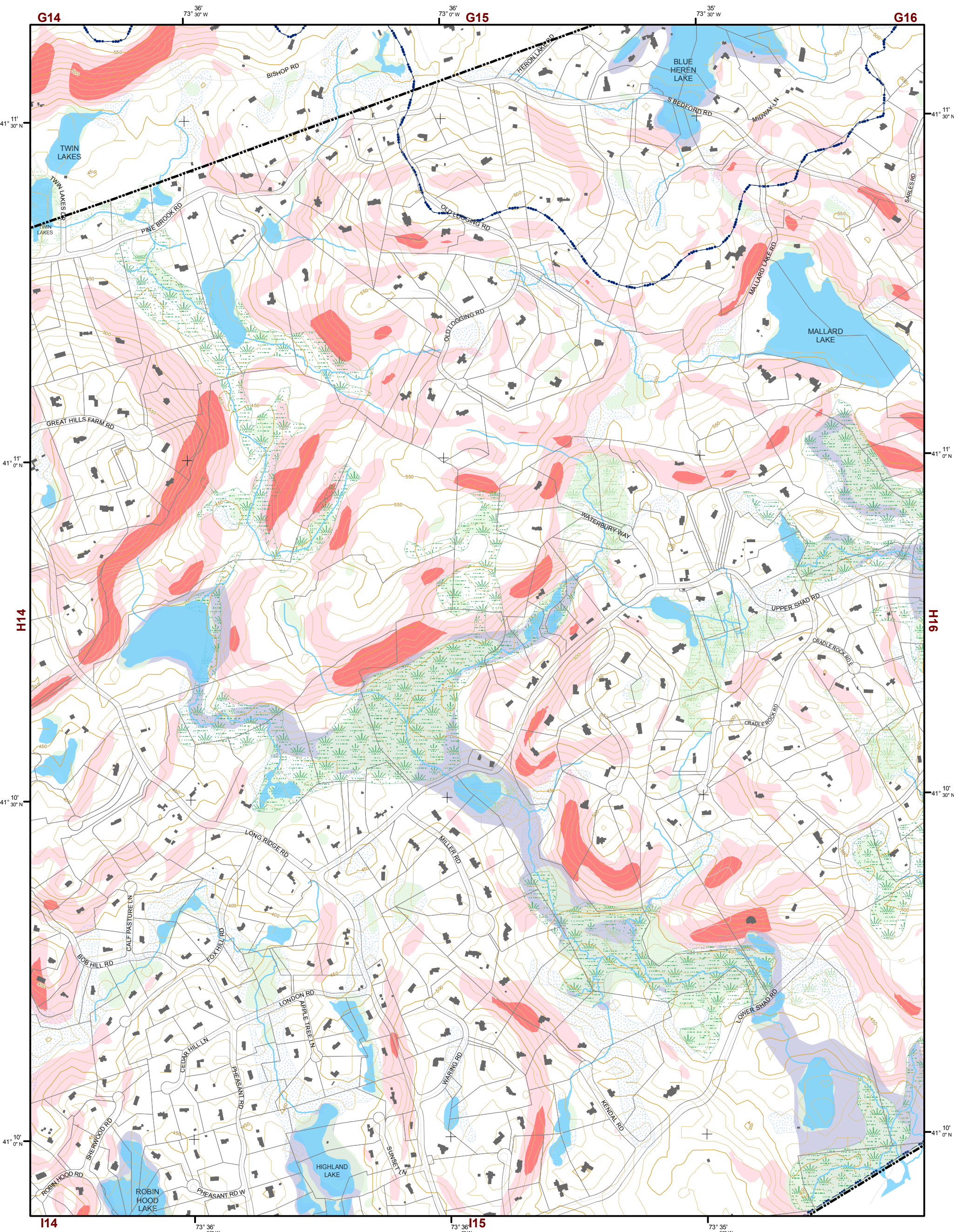
TILE INDEX

D13	D14	D15	D16	D17		
E13	E14	E15	E16	E17	E18	
F13	F14	F15	F16	F17	F18	F19
G13	G14	G15	G16	G17	G18	G19
H13	H14	H15	H16	H17		
I13	I14	I15				
J13						

This map is for general information only and should not be used for site specific planning. Data was collected from a wide range of local, state, and federal GIS databases "as is." Westchester County assumes no liability to any party for any loss or damage caused by errors or omissions resulting from negligence, accident or any other cause.



Westchester County Board of Legislators
Andrew J. Span, Westchester County Executive



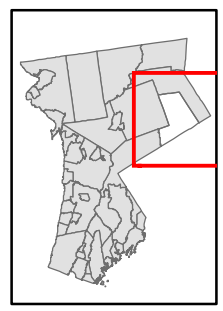
Natural Resource Inventory

Town of Pound Ridge

Map # H15

TILE INDEX

D13	D14	D15	D16	D17		
E13	E14	E15	E16	E17	E18	
F13	F14	F15	F16	F17	F18	F19
G13	G14	G15	G16	G17	G18	G19
H13	H14	H15	H16	H17		
I13	I14	I15				
J13						



1 inch equals 800 feet



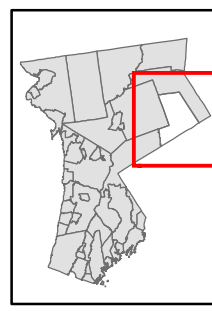
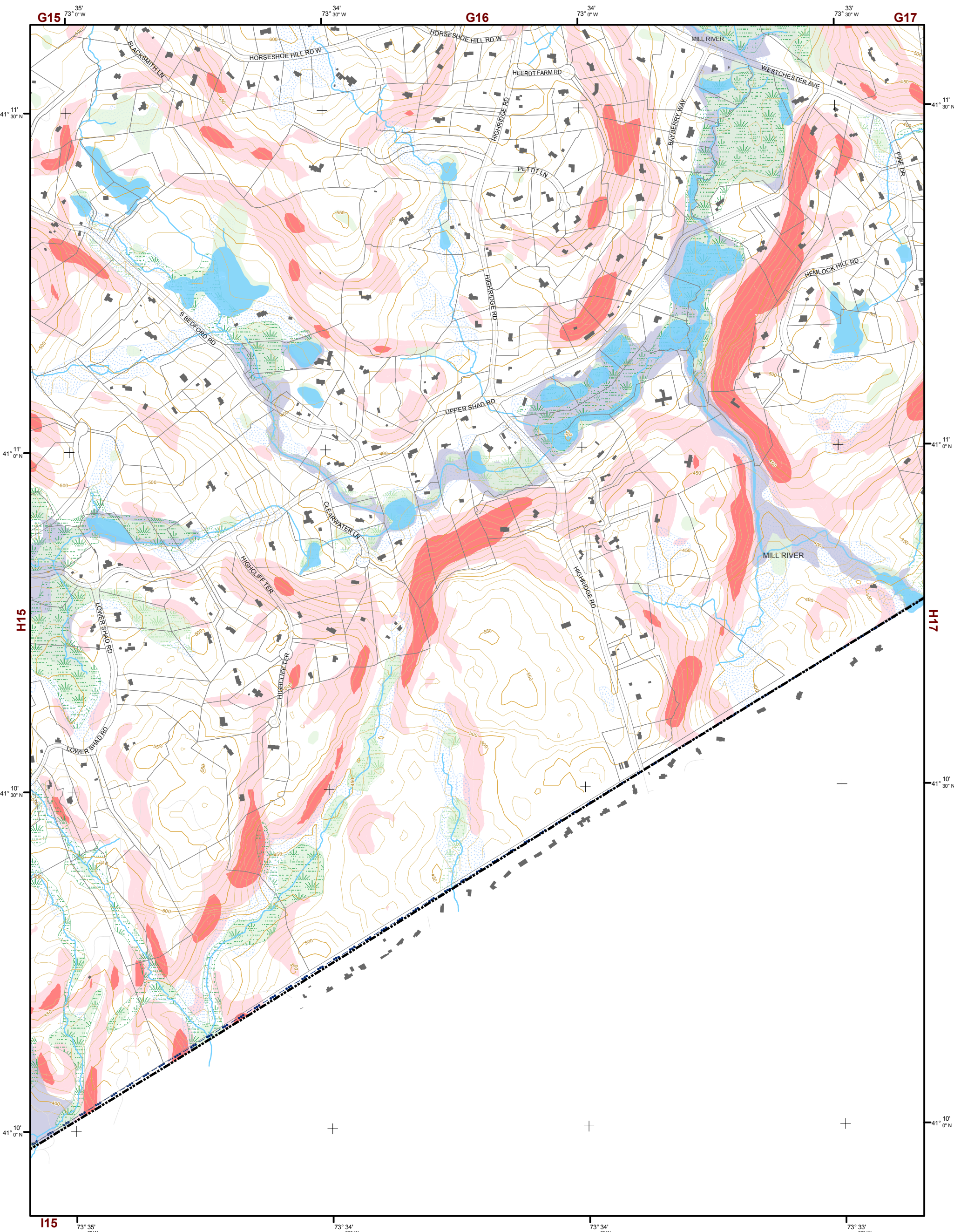
Legend

- 10' TOPO
- 50' TOPO
- Streams
- Lakes, Ponds or Reservoirs
- Aquifer
- Drainage Divides
- Hydric Soils
- Municipal Boundaries
- Tax Parcels
- Buildings
- 15% - 25%
- Over 25%
- National Wetlands Inventory
- Greater than 12.4 acres
- Less than 12.4 acres
- 100
- 500

This map is for general information only and should not be used for site specific planning. Data was collected from a wide range of local, state, and federal GIS databases "as is." Westchester County assumes no liability to any party for any loss or damage caused by errors or omissions resulting from negligence, accident or any other cause.

Westchester County Board of Legislators
 Andrew J. Span, Westchester County Executive





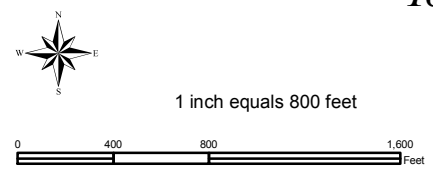
Natural Resource Inventory

Town of Pound Ridge

Map # H16

TILE INDEX

D13	D14	D15	D16	D17		
E13	E14	E15	E16	E17	E18	
F13	F14	F15	F16	F17	F18	F19
G13	G14	G15	G16	G17	G18	G19
H13	H14	H15	H16	H17		
I13	I14	I15				
J13						



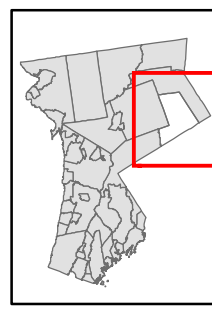
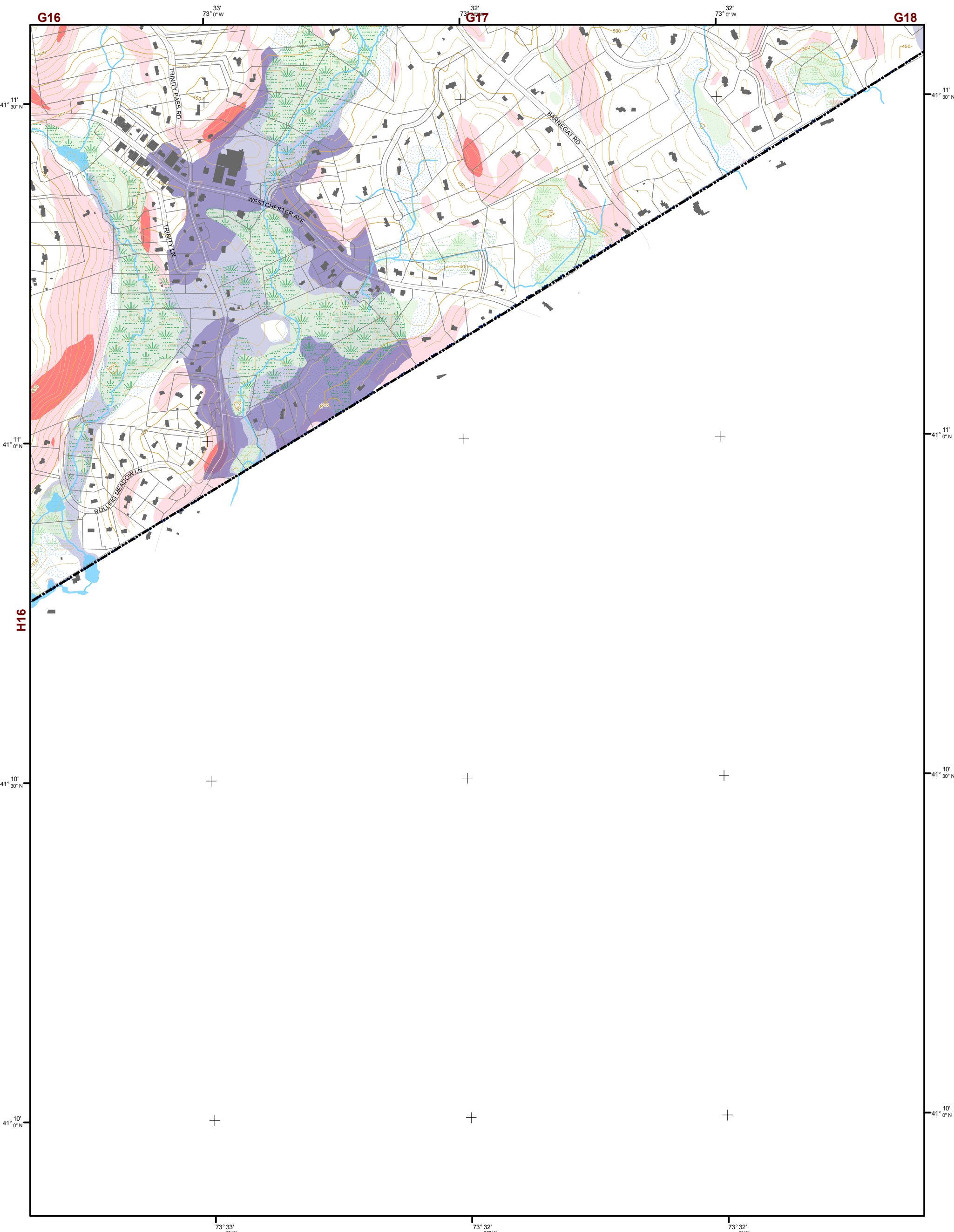
Legend

- 10' TOPO
- 50' TOPO
- Streams
- Lakes, Ponds or Reservoirs
- Aquifer
- Drainage Divides
- Hydric Soils
- Municipal Boundaries
- Tax Parcels
- Buildings
- 15% - 25%
- Over 25%
- National Wetlands Inventory
- NYSDEC Wetlands
Greater than 12.4 acres
- NYSDEC Wetlands
Less than 12.4 acres
- Floodplains
100
- Floodplains
500

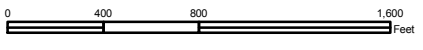
This map is for general information only and should not be used for site specific planning. Data was collected from a wide range of local, state, and federal GIS databases "as is." Westchester County assumes no liability to any party for any loss or damage caused by errors or omissions resulting from negligence, accident or any other cause.



Westchester County Board of Legislators
Andrew J. Span, Westchester County Executive



1 inch equals 800 feet



Natural Resource Inventory

Town of Pound Ridge

Map # H17

Legend

- 10' TOPO
- 50' TOPO
- Streams
- Lakes, Ponds or Reservoirs
- Aquifer
- Drainage Divides
- Hydic Soils
- Municipal Boundaries
- Tax Parcels
- Buildings
- 15% - 25%
- Over 25%
- National Wetlands Inventory
- Greater than 12.4 acres
- Less than 12.4 acres
- 100
- 500

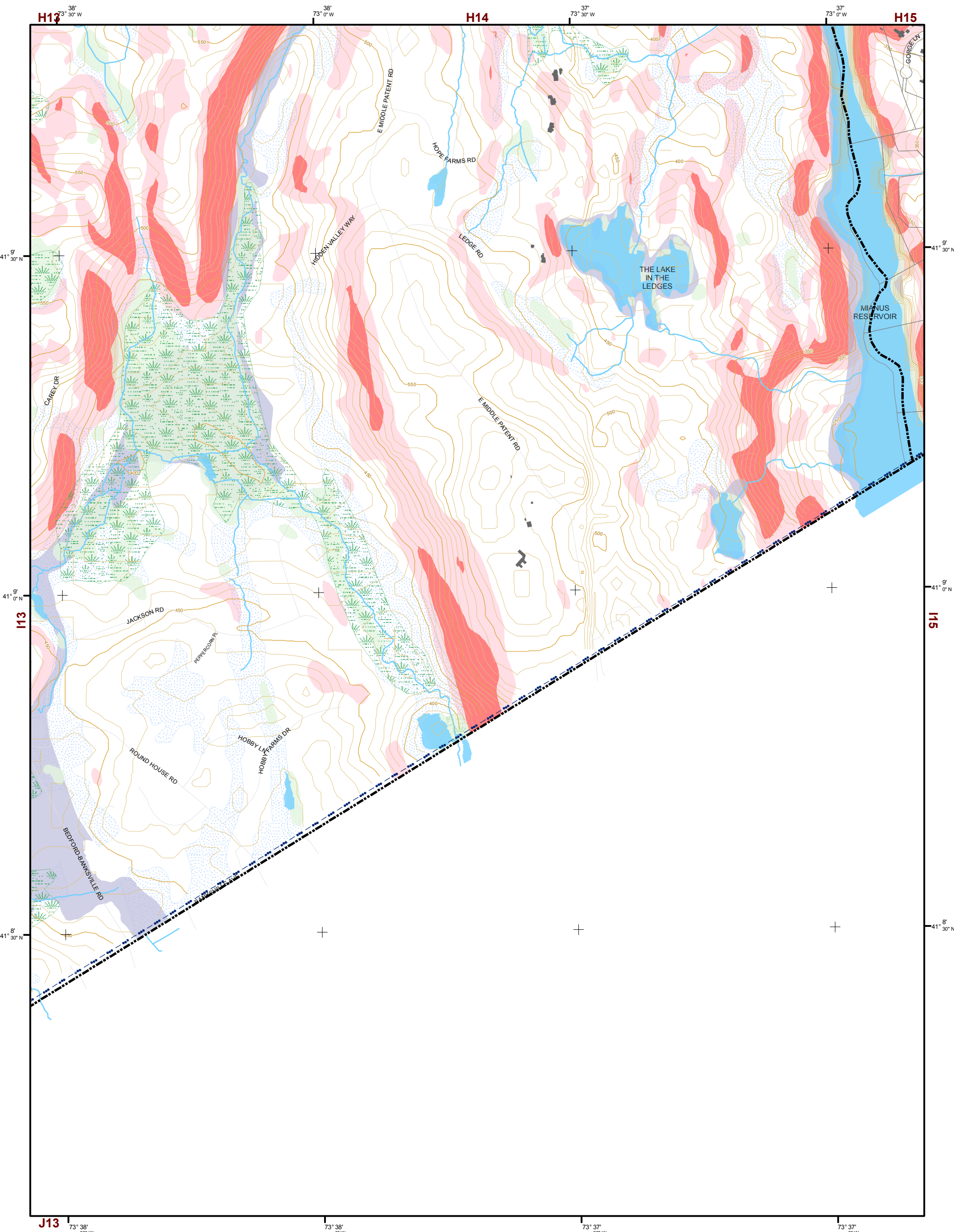
TILE INDEX

D13	D14	D15	D16	D17		
E13	E14	E15	E16	E17	E18	
F13	F14	F15	F16	F17	F18	F19
G13	G14	G15	G16	G17	G18	G19
H13	H14	H15	H16	H17		
I13	I14	I15				
J13						

This map is for general information only and should not be used for site specific planning. Data was collected from a wide range of local, state, and federal GIS databases "as is." Westchester County assumes no liability to any party for any loss or damage caused by errors or omissions resulting from negligence, accident or any other cause.

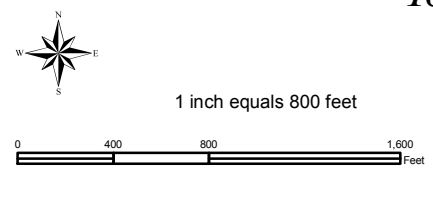
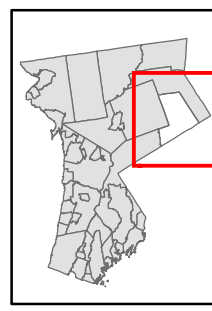


Westchester County Board of Legislators
Andrew J. Spano, Westchester County Executive



Natural Resource Inventory Map # I14

Town of Pound Ridge



Legend

- 10' TOPO
- 50' TOPO
- Streams
- Lakes, Ponds or Reservoirs
- Aquifer
- Drainage Divides
- Hydric Soils
- Municipal Boundaries
- Tax Parcels
- Buildings
- 15% - 25%
- Over 25%
- National Wetlands Inventory

- NYSDEC Wetlands
- Greater than 12.4 acres
- Less than 12.4 acres
- Floodplains
- 100
- 500

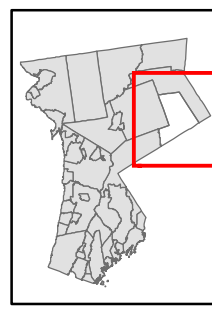
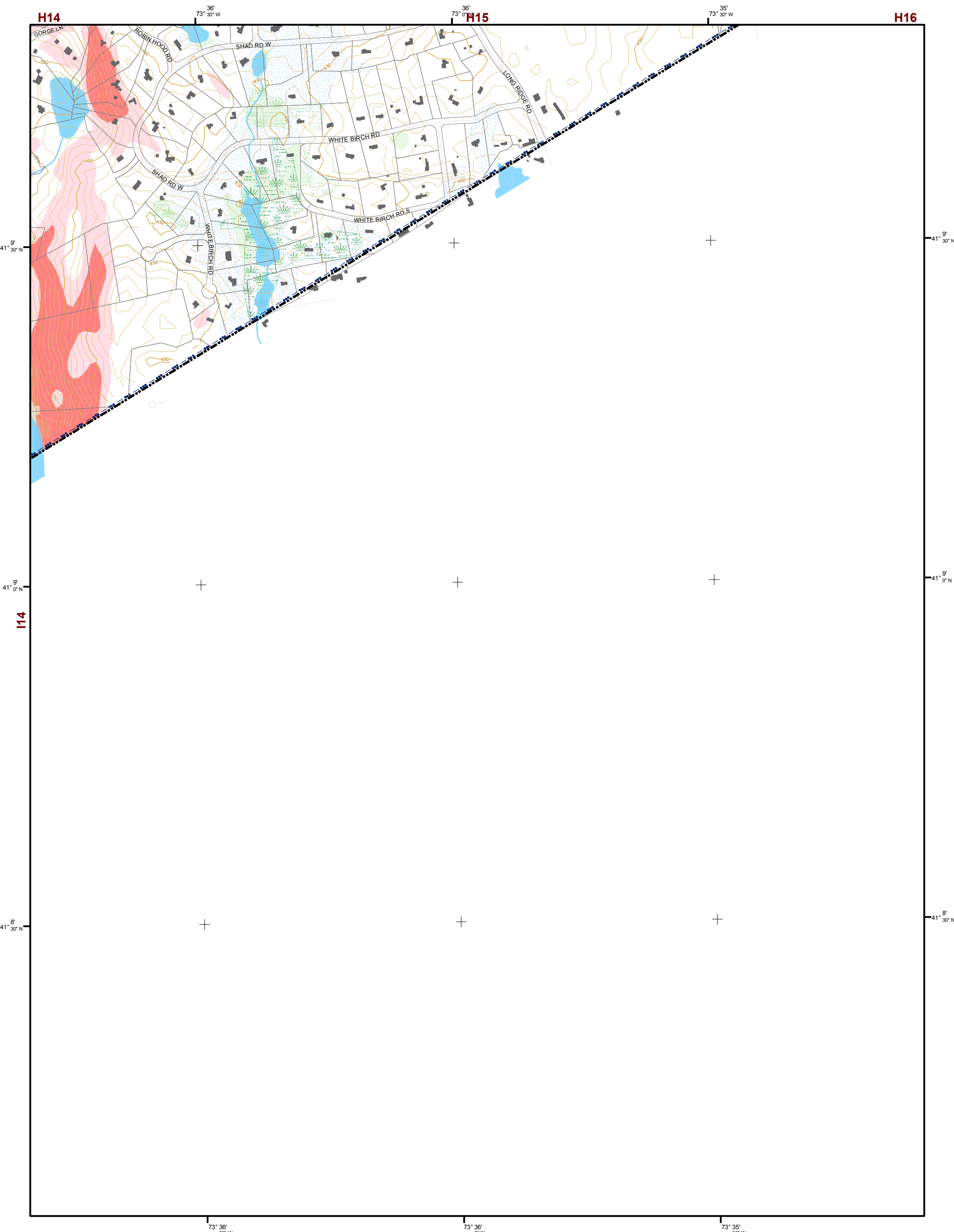
TILE INDEX

D13	D14	D15	D16	D17		
E13	E14	E15	E16	E17	E18	
F13	F14	F15	F16	F17	F18	F19
G13	G14	G15	G16	G17	G18	G19
H13	H14	H15	H16	H17		
I13	I14	I15				
J13						

This map is for general information only and should not be used for site specific planning. Data was collected from a wide range of local, state, and federal GIS databases "as is." Westchester County assumes no liability to any party for any loss or damage caused by errors or omissions resulting from negligence, accident or any other cause.



Westchester County Board of Legislators
Andrew J. Span, Westchester County Executive



1 inch equals 800 feet



Natural Resource Inventory

Town of Pound Ridge

Map # I15

Legend

- 10' TOPO
- 50' TOPO
- Streams
- Lakes, Ponds or Reservoirs
- Aquifer
- Drainage Divides
- Hydric Soils
- Municipal Boundaries
- Tax Parcels
- Buildings
- 15% - 25%
- Over 25%
- National Wetlands Inventory
- Greater than 12.4 acres
- Less than 12.4 acres
- 100
- 500

TILE INDEX

D13	D14	D15	D16	D17		
E13	E14	E15	E16	E17	E18	
F13	F14	F15	F16	F17	F18	F19
G13	G14	G15	G16	G17	G18	G19
H13	H14	H15	H16	H17		
I13	I14	I15				
J13						

This map is for general information only and should not be used for site specific planning. Data was collected from a wide range of local, state, and federal GIS databases "as is." Westchester County assumes no liability to any party for any loss or damage caused by errors or omissions resulting from negligence, accident or any other cause.



Westchester County Board of Legislators
Andrew J. Spano, Westchester County Executive