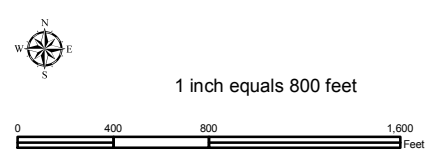
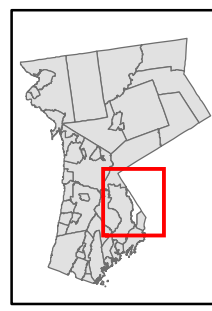


# Natural Resource Inventory

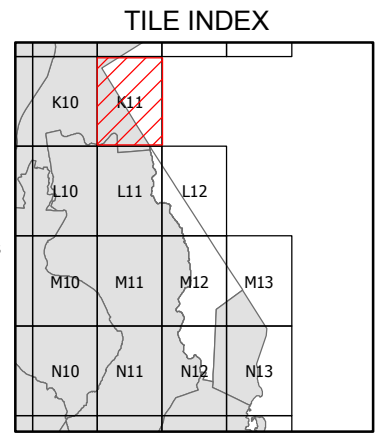
## Village of Rye Brook

Map # K11



### Legend

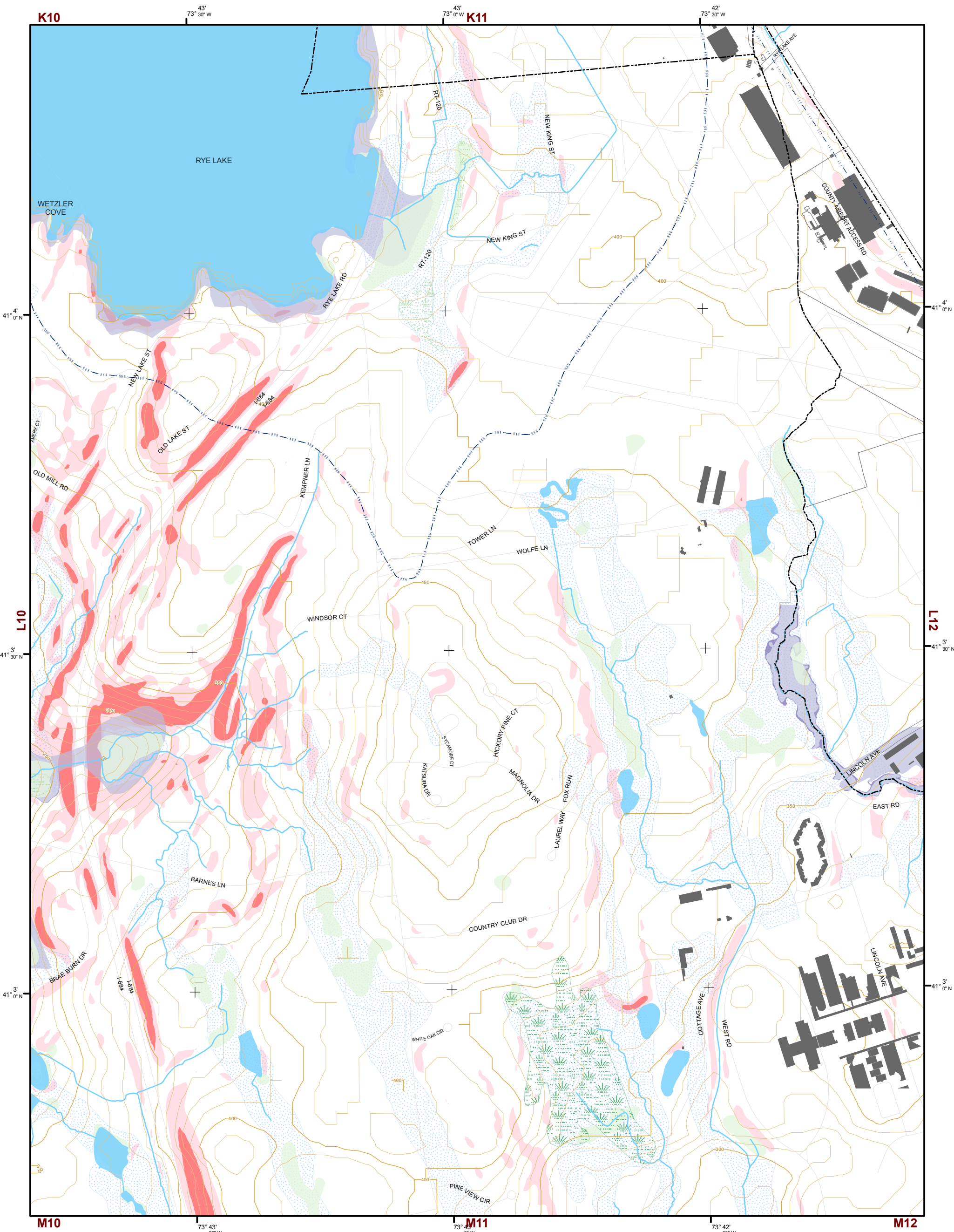
- 10' TOPO
- 50' TOPO
- Streams
- Lakes, Ponds or Reservoirs
- Aquifer
- Drainage Divides
- Hydric Soils
- Municipal Boundaries
- Tax Parcels
- Buildings
- Slope**
  - 15% - 25%
  - 25% and Over
- NYSDEC Wetlands**
  - Greater than 12.4 acres
  - Less than 12.4 acres
- Floodplains**
  - 100
  - 500
- National Wetlands Inventory



This map is for general information only and should not be used for site specific planning. Data was collected from a wide range of local, state, and federal GIS databases "as is." Westchester County assumes no liability to any party for any loss or damage caused by errors or omissions resulting from negligence, accident or any other cause.



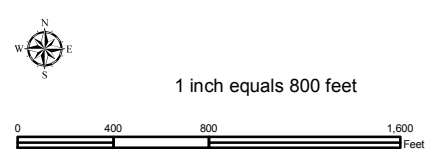
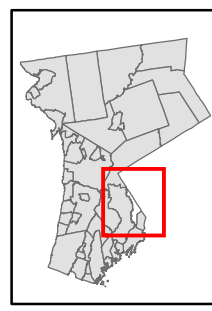
Westchester County Board of Legislators  
Andrew J. Spano, Westchester County Executive



# Natural Resource Inventory

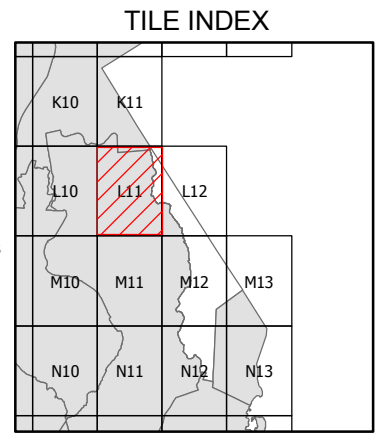
## Village of Rye Brook

Map # L11



### Legend

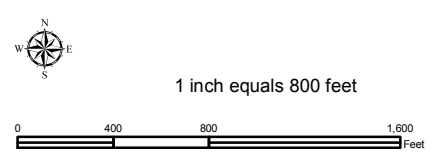
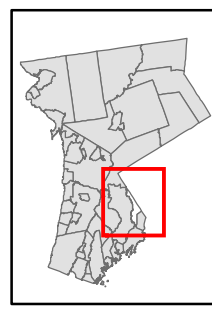
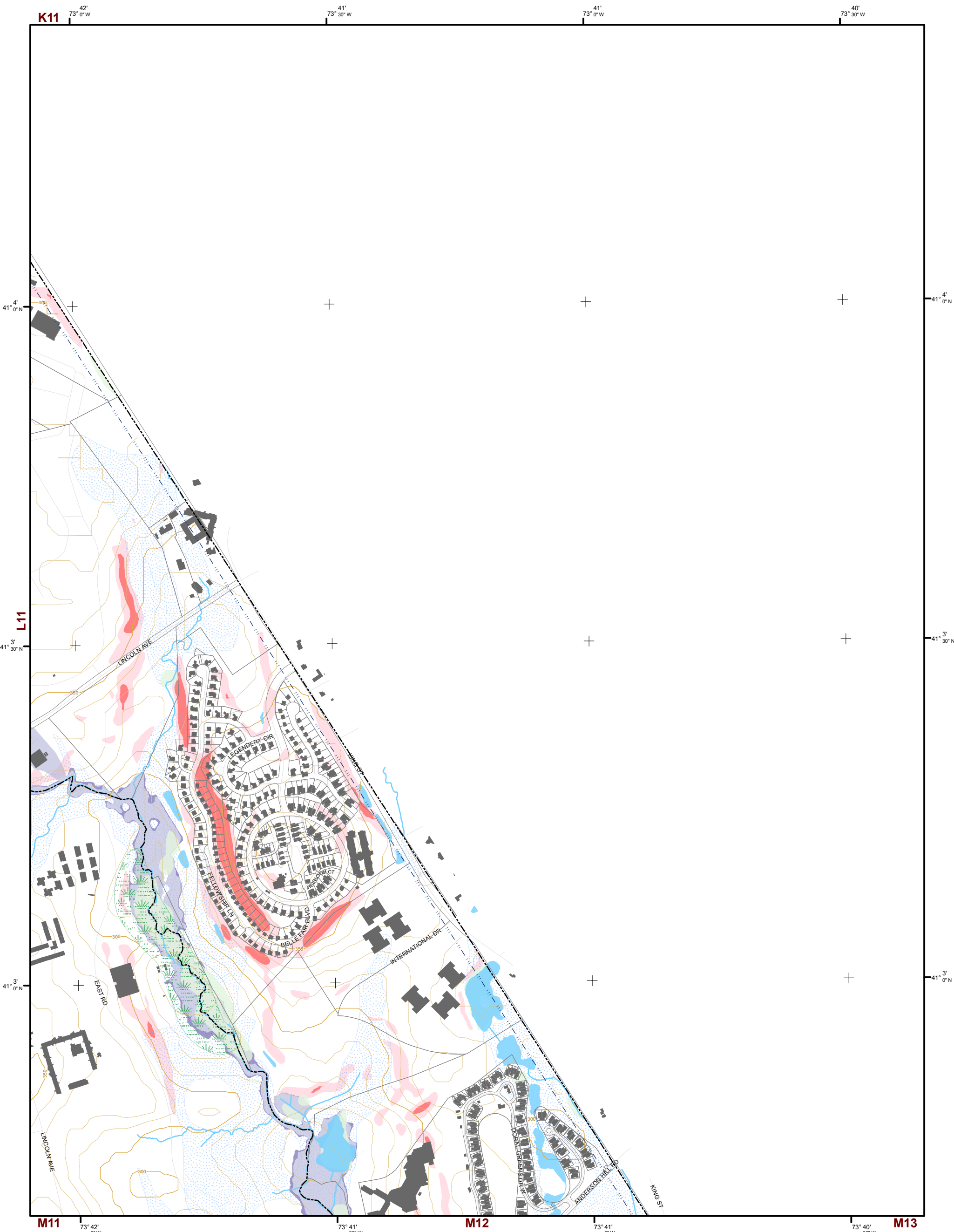
- 10' TOPO
- 50' TOPO
- Streams
- Lakes, Ponds or Reservoirs
- Aquifer
- Drainage Divides
- Hydric Soils
- Municipal Boundaries
- Tax Parcels
- Buildings
- Slope**
  - 15% - 25%
  - 25% and Over
- NYSDEC Wetlands**
  - Greater than 12.4 acres
  - Less than 12.4 acres
- Floodplains**
  - 100
  - 500
- National Wetlands Inventory



This map is for general information only and should not be used for site specific planning. Data was collected from a wide range of local, state, and federal GIS databases "as is." Westchester County assumes no liability to any party for any loss or damage caused by errors or omissions resulting from negligence, accident or any other cause.



Westchester County Board of Legislators



# Natural Resource Inventory

## Village of Rye Brook

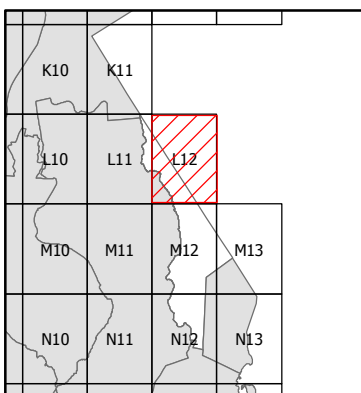
Map # L12

### Legend

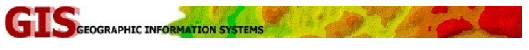
- 10' TOPO
- 50' TOPO
- Streams
- Lakes, Ponds or Reservoirs
- Aquifer
- Drainage Divides
- Hydric Soils
- Municipal Boundaries
- Tax Parcels
- Buildings
- 15% - 25%
- 25% and Over
- National Wetlands Inventory

- NYSDEC Wetlands**
- Greater than 12.4 acres
- Less than 12.4 acres
- Floodplains**
- 100
- 500

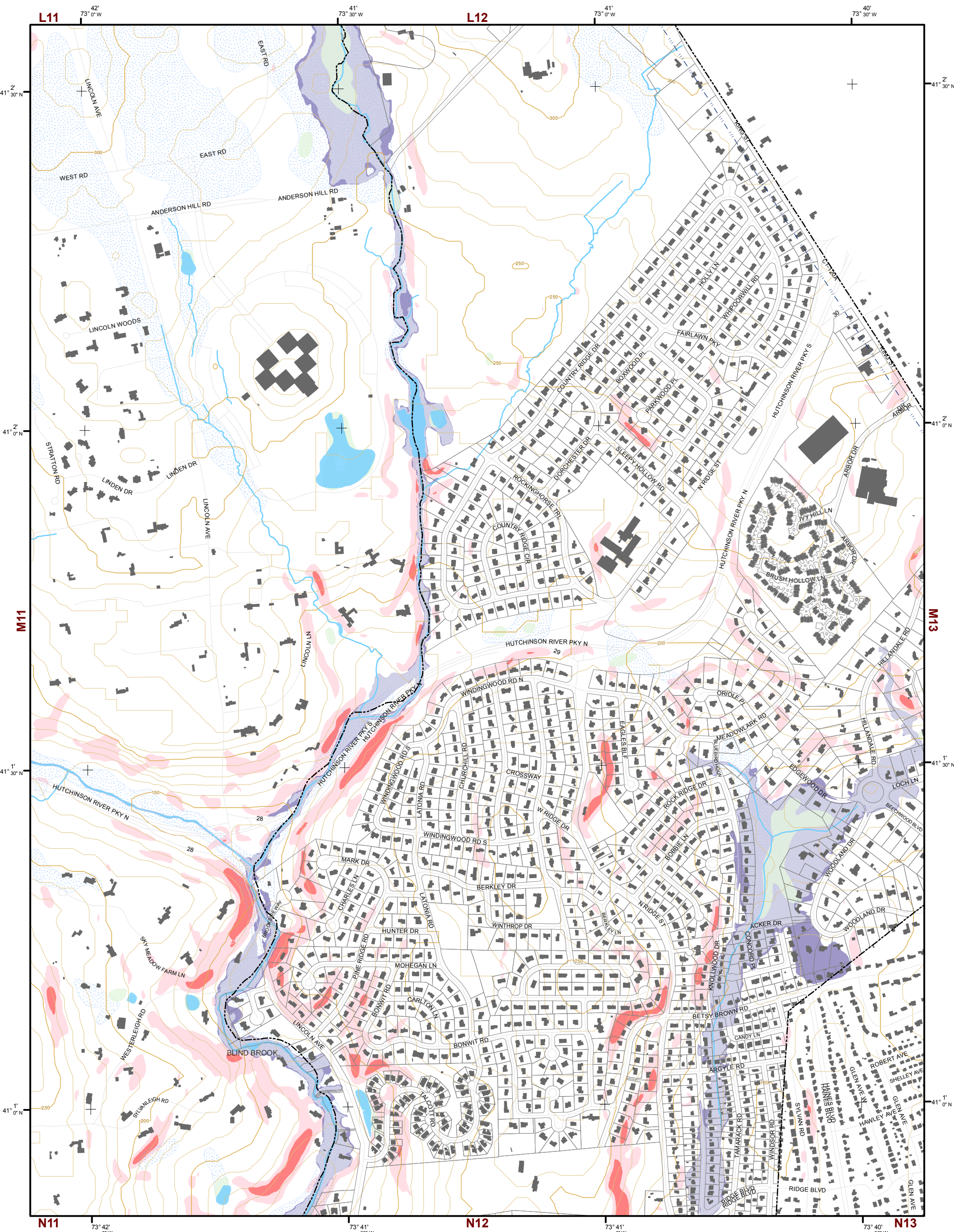
### TILE INDEX



This map is for general information only and should not be used for site specific planning. Data was collected from a wide range of local, state, and federal GIS databases "as is." Westchester County assumes no liability to any party for any loss or damage caused by errors or omissions resulting from negligence, accident or any other cause.



Westchester County Board of Legislators  
Andrew J. Spano, Westchester County Executive

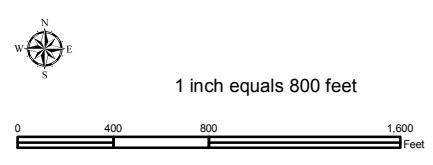
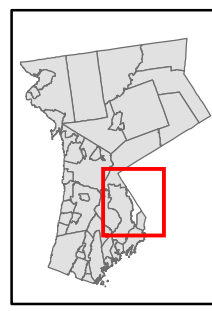


# Natural Resource Inventory

## Village of Rye Brook

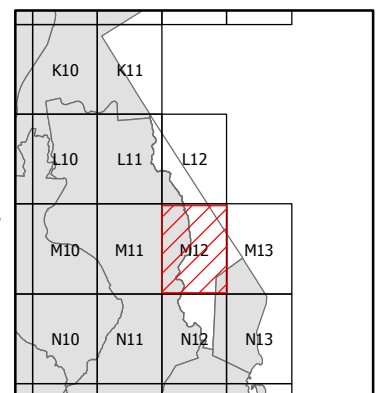
Map # M12

TILE INDEX



### Legend

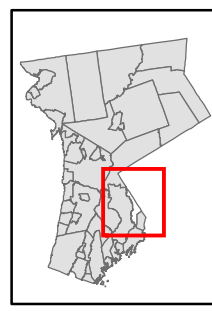
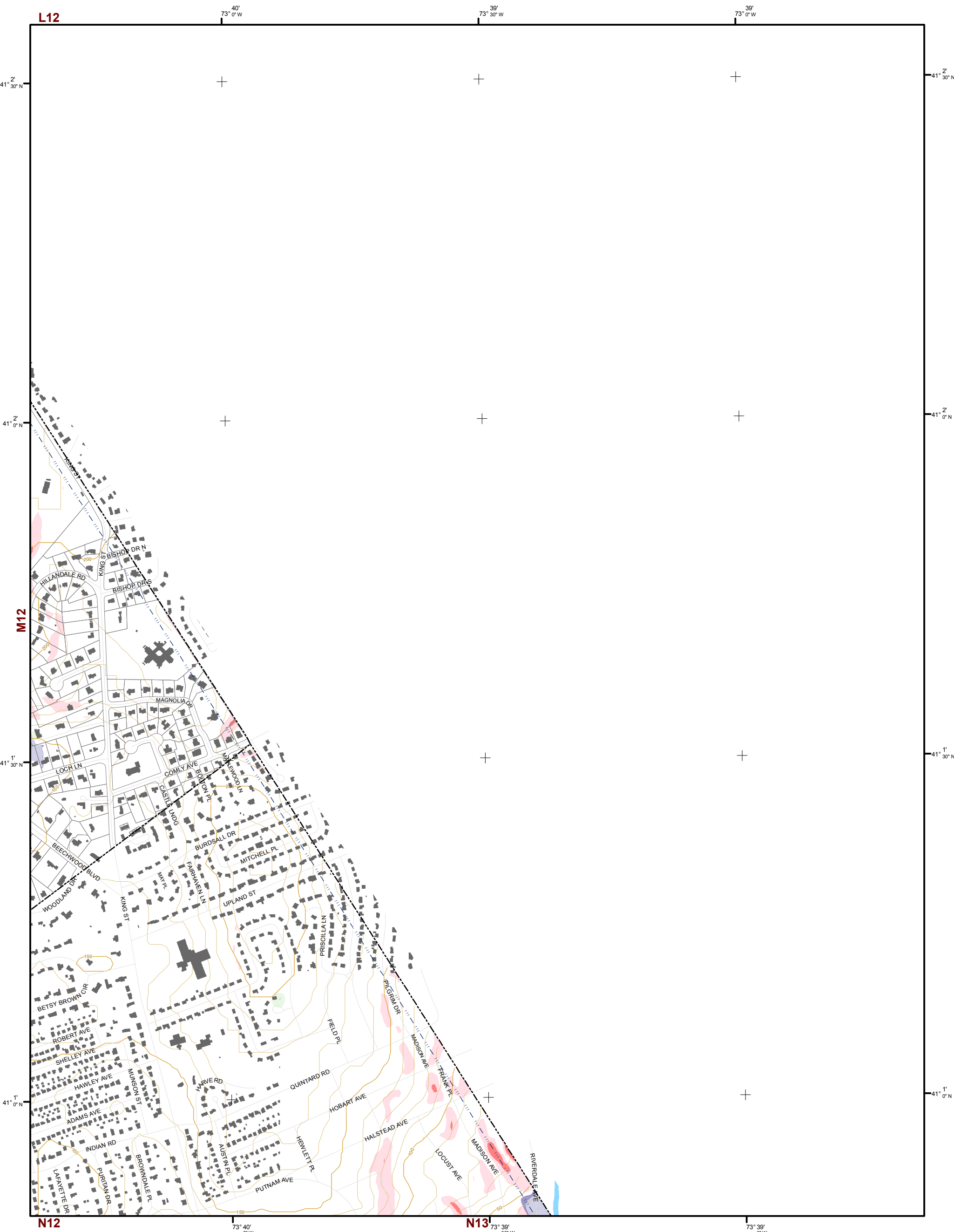
- 10' TOPO
- 50' TOPO
- Streams
- Lakes, Ponds or Reservoirs
- Aquifer
- Drainage Divides
- Hydric Soils
- Municipal Boundaries
- Tax Parcels
- Buildings
- Slope 15% - 25%
- Slope 25% and Over
- National Wetlands Inventory
- NYSDEC Wetlands Greater than 12.4 acres
- NYSDEC Wetlands Less than 12.4 acres
- Floodplains 100
- Floodplains 500



This map is for general information only and should not be used for site specific planning. Data was collected from a wide range of local, state, and federal GIS databases "as is." Westchester County assumes no liability to any party for any loss or damage caused by errors or omissions resulting from negligence, accident or any other cause.



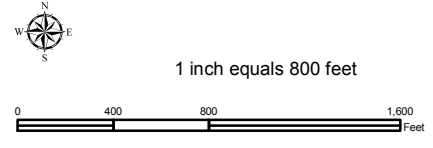
Westchester County Board of Legislators  
Andrew J. Span, Westchester County Executive



# Natural Resource Inventory

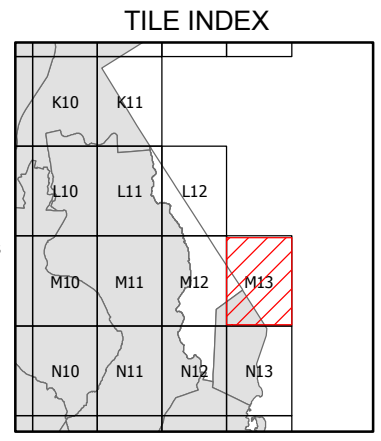
## Village of Rye Brook

Map # M13

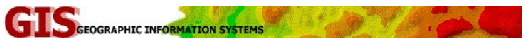


### Legend

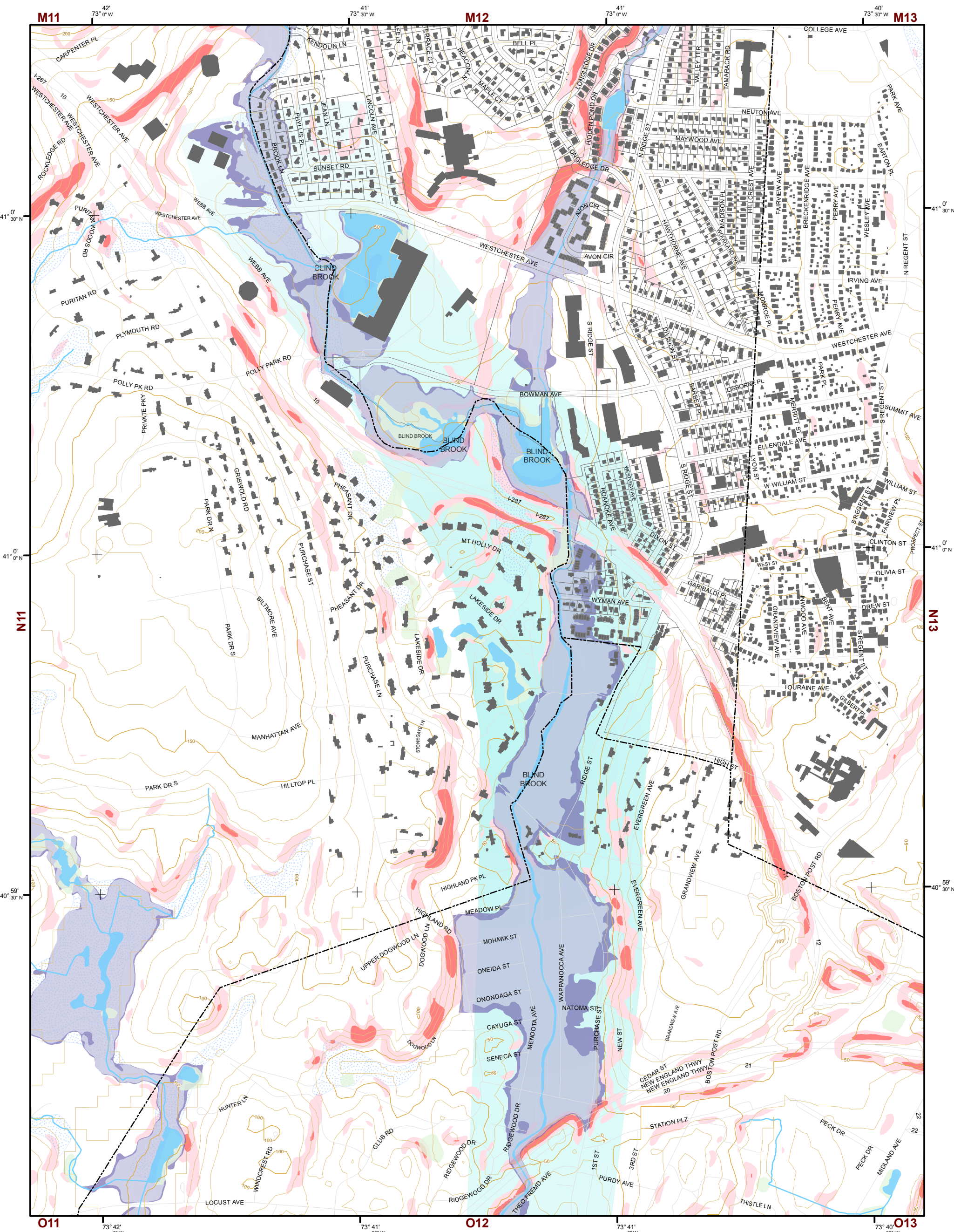
- 10' TOPO
- 50' TOPO
- Streams
- Lakes, Ponds or Reservoirs
- Aquifer
- Drainage Divides
- Hydric Soils
- Municipal Boundaries
- Tax Parcels
- Buildings
- Slope**
- 15% - 25%
- 25% and Over
- NYSDEC Wetlands**
- Greater than 12.4 acres
- Less than 12.4 acres
- Floodplains**
- 100
- 500
- National Wetlands Inventory



This map is for general information only and should not be used for site specific planning. Data was collected from a wide range of local, state, and federal GIS databases "as is." Westchester County assumes no liability to any party for any loss or damage caused by errors or omissions resulting from negligence, accident or any other cause.



Westchester  
County Board of Legislators  
Andrew J. Spano, Westchester County Executive

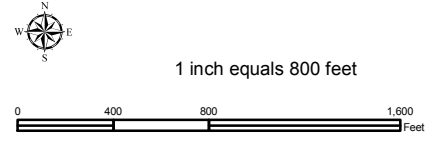
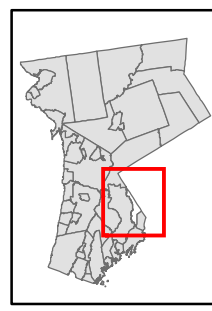


# Natural Resource Inventory

## Village of Rye Brook

Map # N12

TILE INDEX



- Legend**
- 10' TOPO
  - 50' TOPO
  - Streams
  - Lakes, Ponds or Reservoirs
  - Aquifer
  - Drainage Divides
  - Hydic Soils
  - Municipal Boundaries
  - Tax Parcels
  - Buildings
  - Slope
    - 15% - 25%
    - 25% and Over
  - NYSDEC Wetlands
    - Greater than 12.4 acres
    - Less than 12.4 acres
  - Floodplains
    - 100
    - 500
  - National Wetlands Inventory

K10	K11	K12	
L10	L11	L12	
M10	M11	M12	M13
N10	N11	N12	N13

This map is for general information only and should not be used for site specific planning. Data was collected from a wide range of local, state, and federal GIS databases "as is." Westchester County assumes no liability to any party for any loss or damage caused by errors or omissions resulting from negligence, accident or any other cause.

**GIS** GEOGRAPHIC INFORMATION SYSTEMS

Westchester County Board of Legislators