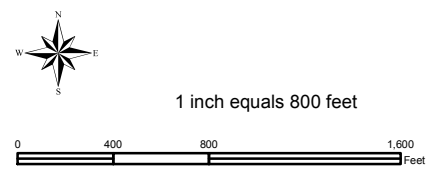
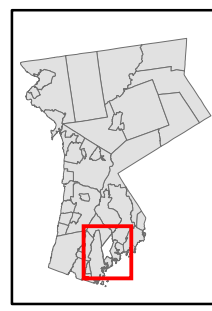


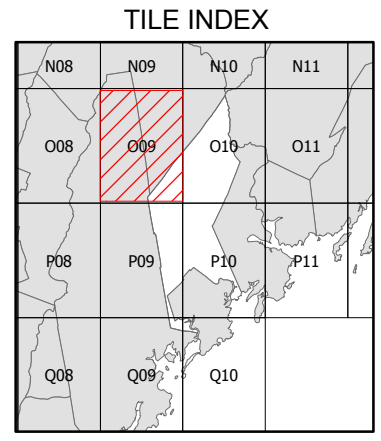
Natural Resource Inventory

Town of Mamaroneck

Map # 009



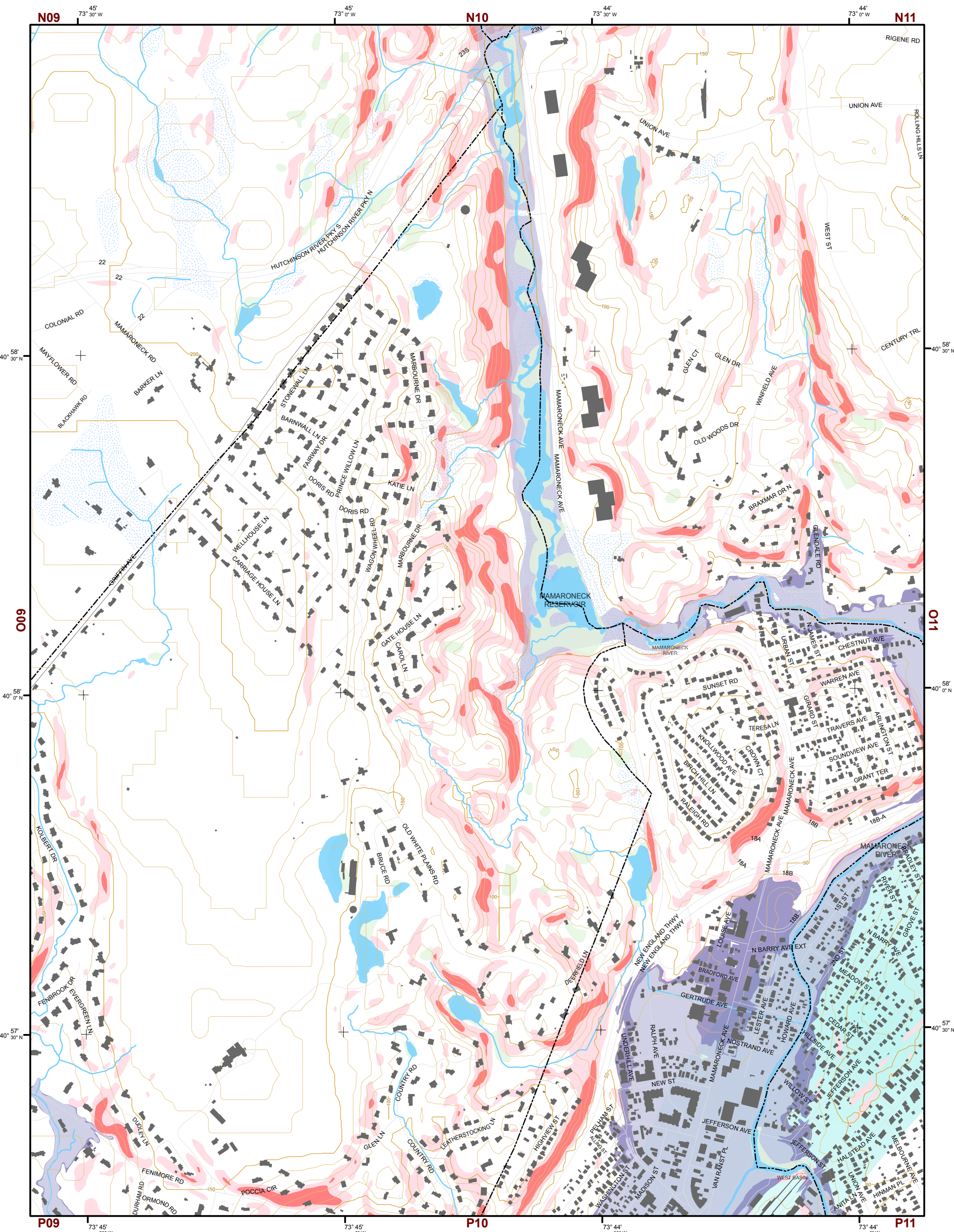
- Legend**
- 10' TOPO
 - 50' TOPO
 - Streams
 - Lakes, Ponds or Reservoirs
 - Aquifer
 - Drainage Divides
 - Hydric Soils
 - Municipal Boundaries
 - Buildings
 - Slope
 - 15% - 25%
 - 25% and Over
 - NYSDEC Wetlands
 - Greater than 12.4 acres
 - Less than 12.4 acres
 - Floodplains
 - 100
 - 500
 - Tidal Wetlands



This map is for general information only and should not be used for site specific planning. Data was collected from a wide range of local, state, and federal GIS databases "as is". Westchester County assumes no liability to any party for any loss or damage caused by errors or omissions resulting from negligence, accident or any other cause.



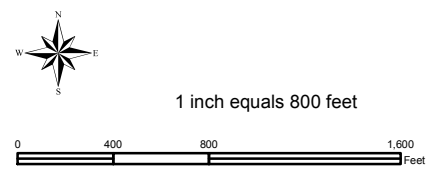
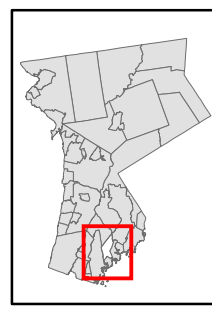
Westchester County Executive
Andrew J. Spano, Westchester County Executive
County Board of Legislators



Natural Resource Inventory

Town of Mamaroneck

Map # O10



- Legend**
- 10' TOPO
 - 50' TOPO
 - Streams
 - Lakes, Ponds or Reservoirs
 - Aquifer
 - Drainage Divides
 - Hydric Soils
 - Municipal Boundaries
 - Buildings
 - Slope
 - 15% - 25%
 - 25% and Over
 - National Wetlands Inventory
 - NYSDEC Wetlands
 - Greater than 12.4 acres
 - Less than 12.4 acres
 - Floodplains
 - 100
 - 500
 - Tidal Wetlands

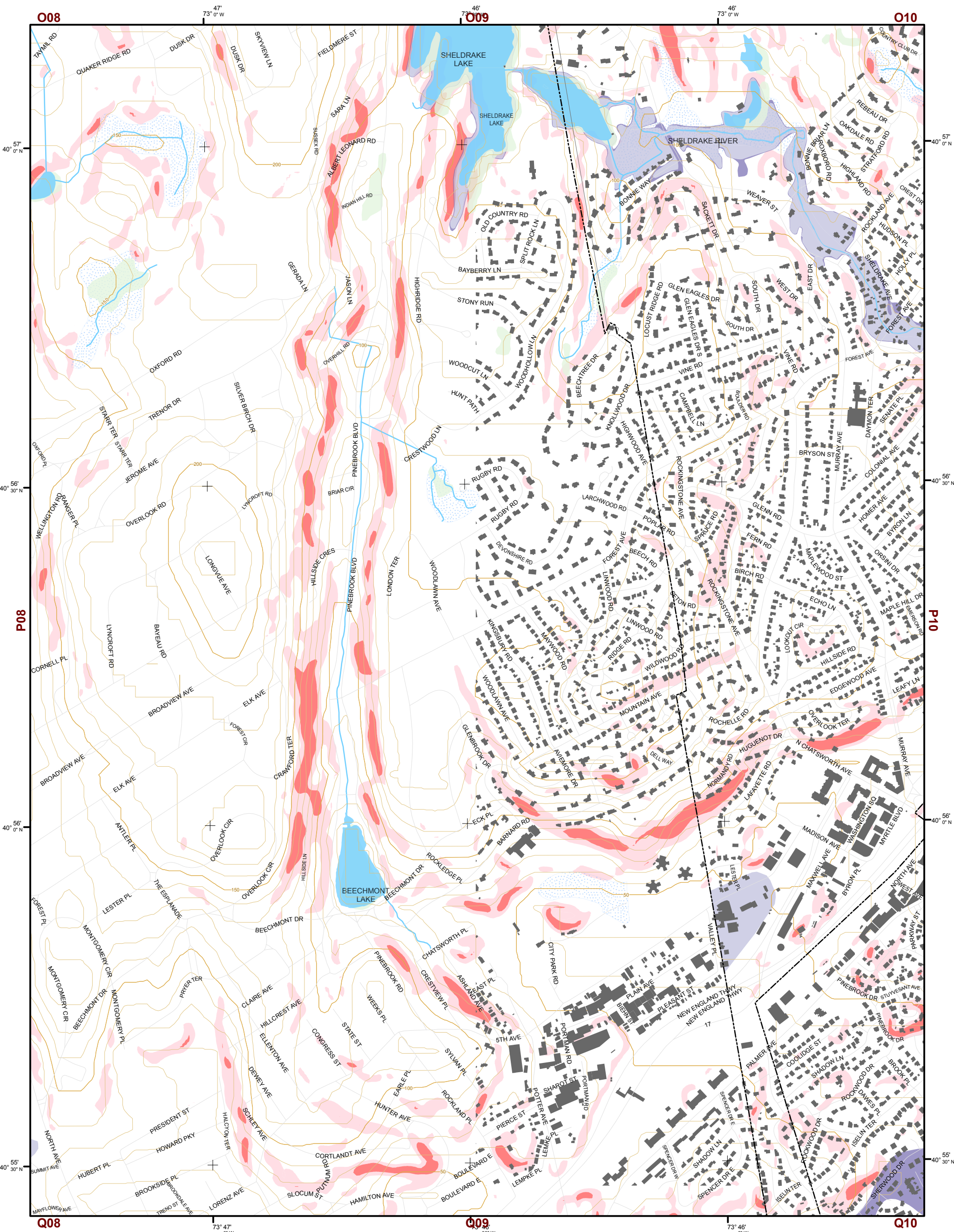
TILE INDEX

N08	N09	N10	N11
O08	O09	O10	O11
P08	P09	P10	P11
Q08	Q09	Q10	

This map is for general information only and should not be used for site specific planning. Data was collected from a wide range of local, state, and federal GIS databases "as is." Westchester County assumes no liability to any party for any loss or damage caused by errors or omissions resulting from negligence, accident or any other cause.



Westchester
County Board of Legislators

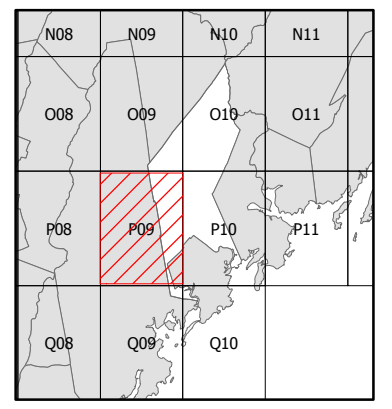


Natural Resource Inventory

Town of Mamaroneck

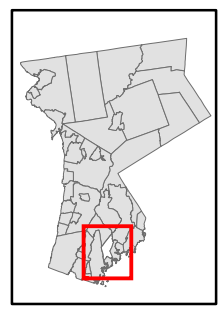
Map # P09

TILE INDEX



Legend

- 10' TOPO
- 50' TOPO
- Streams
- Lakes, Ponds or Reservoirs
- Aquifer
- Drainage Divides
- Hydric Soils
- Municipal Boundaries
- Buildings
- Slope 15% - 25%
- Slope 25% and Over
- National Wetlands Inventory
- NYSDEC Wetlands Greater than 12.4 acres
- NYSDEC Wetlands Less than 12.4 acres
- Floodplains 100
- Floodplains 500
- Tidal Wetlands



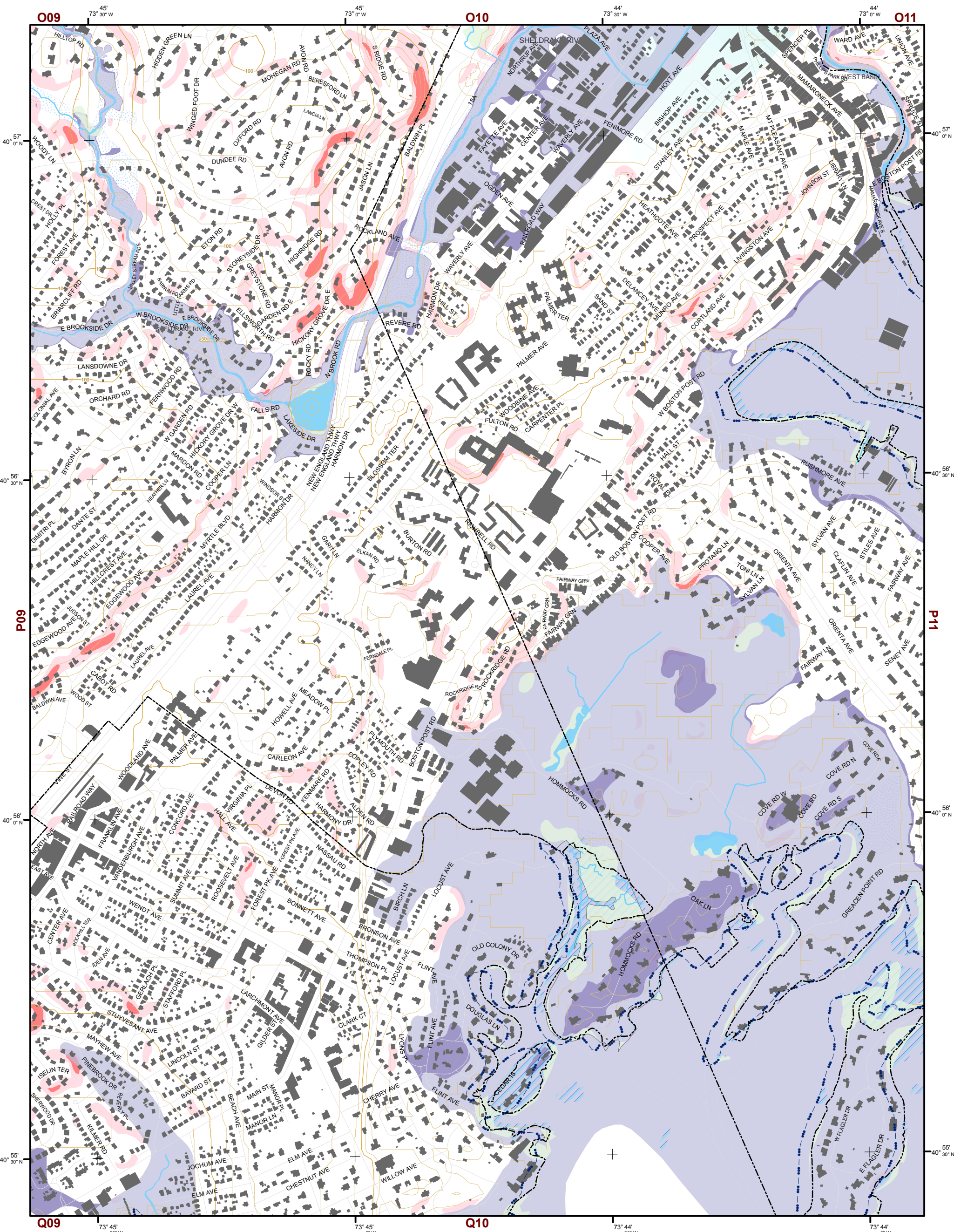
1 inch equals 800 feet



This map is for general information only and should not be used for site specific planning. Data was collected from a wide range of local, state, and federal GIS databases "as is". Westchester County assumes no liability to any party for any loss or damage caused by errors or omissions resulting from negligence, accident or any other cause.



Westchester County
 Andrew J. Spano, Westchester County Executive
 County Board of Legislators

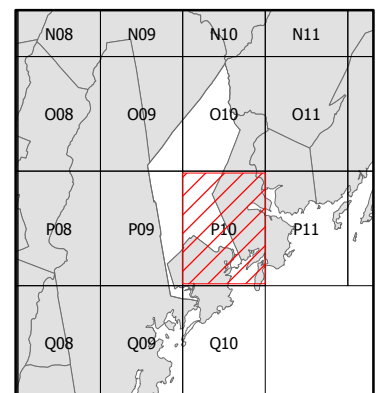


Natural Resource Inventory

Town of Mamaroneck

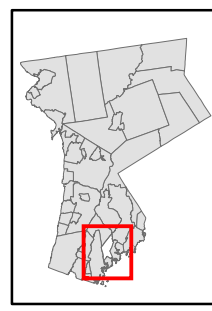
Map # P10

TILE INDEX

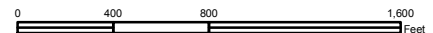


Legend

- 10' TOPO
- 50' TOPO
- Streams
- Lakes, Ponds or Reservoirs
- Aquifer
- Drainage Divides
- Hydric Soils
- Municipal Boundaries
- Buildings
- Slope 15% - 25%
- Slope 25% and Over
- National Wetlands Inventory
- NYSDEC Wetlands Greater than 12.4 acres
- NYSDEC Wetlands Less than 12.4 acres
- Floodplains 100
- Floodplains 500
- Tidal Wetlands

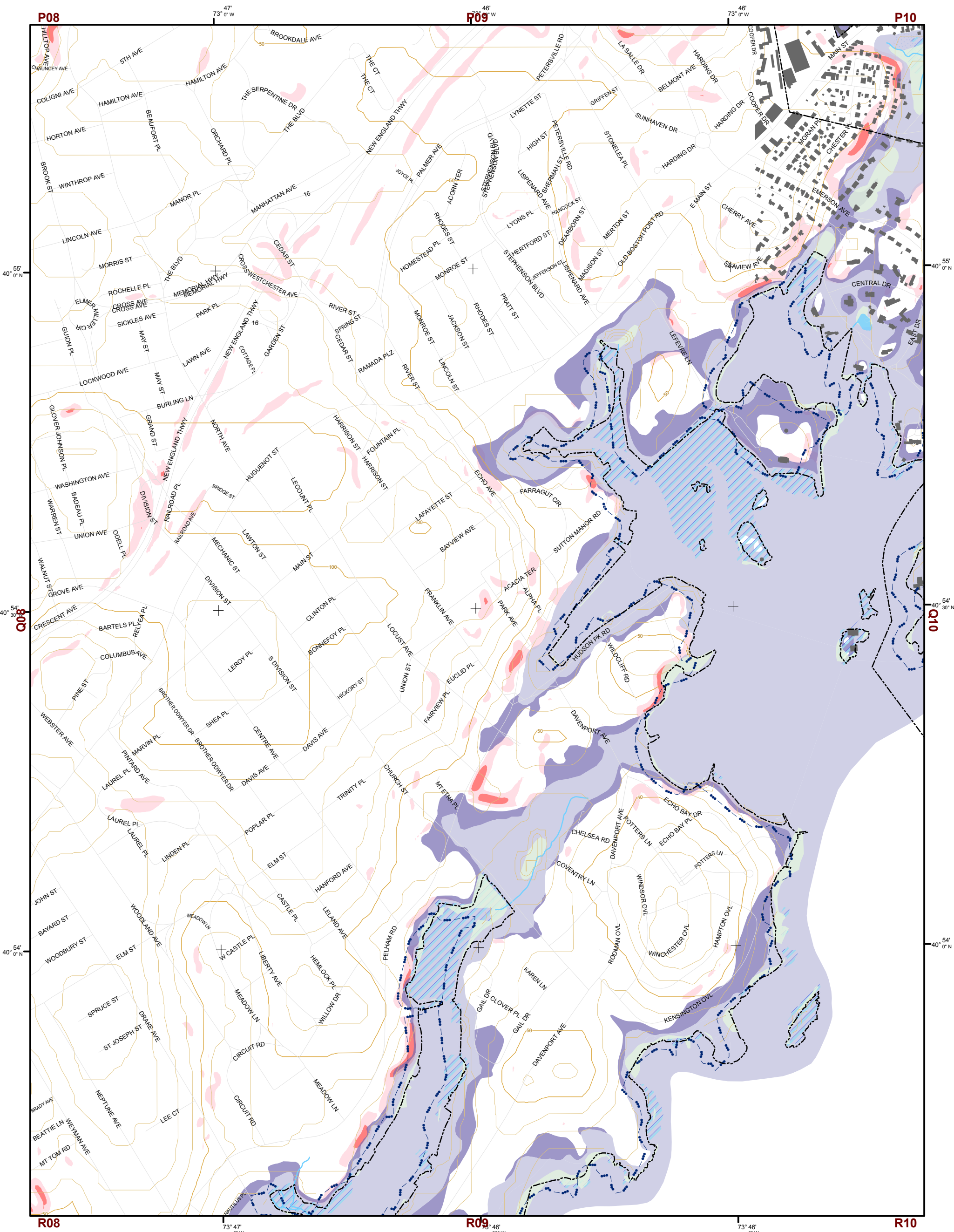


1 inch equals 800 feet



This map is for general information only and should not be used for site specific planning. Data was collected from a wide range of local, state, and federal GIS databases "as is". Westchester County assumes no liability to any party for any loss or damage caused by errors or omissions resulting from negligence, accident or any other cause.



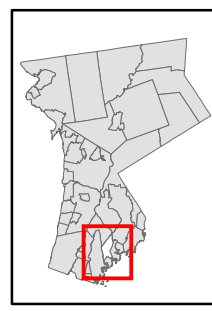


Natural Resource Inventory

Town of Mamaroneck

Map # Q09

TILE INDEX

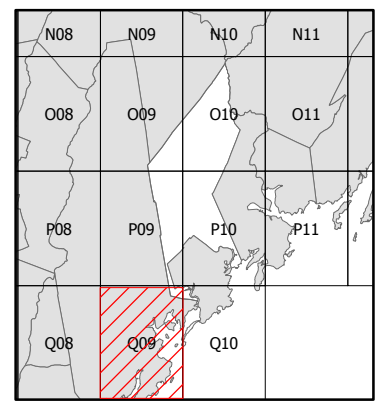


1 inch equals 800 feet



Legend

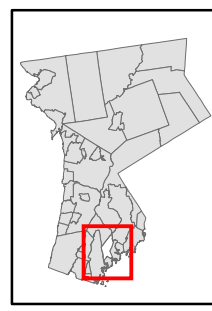
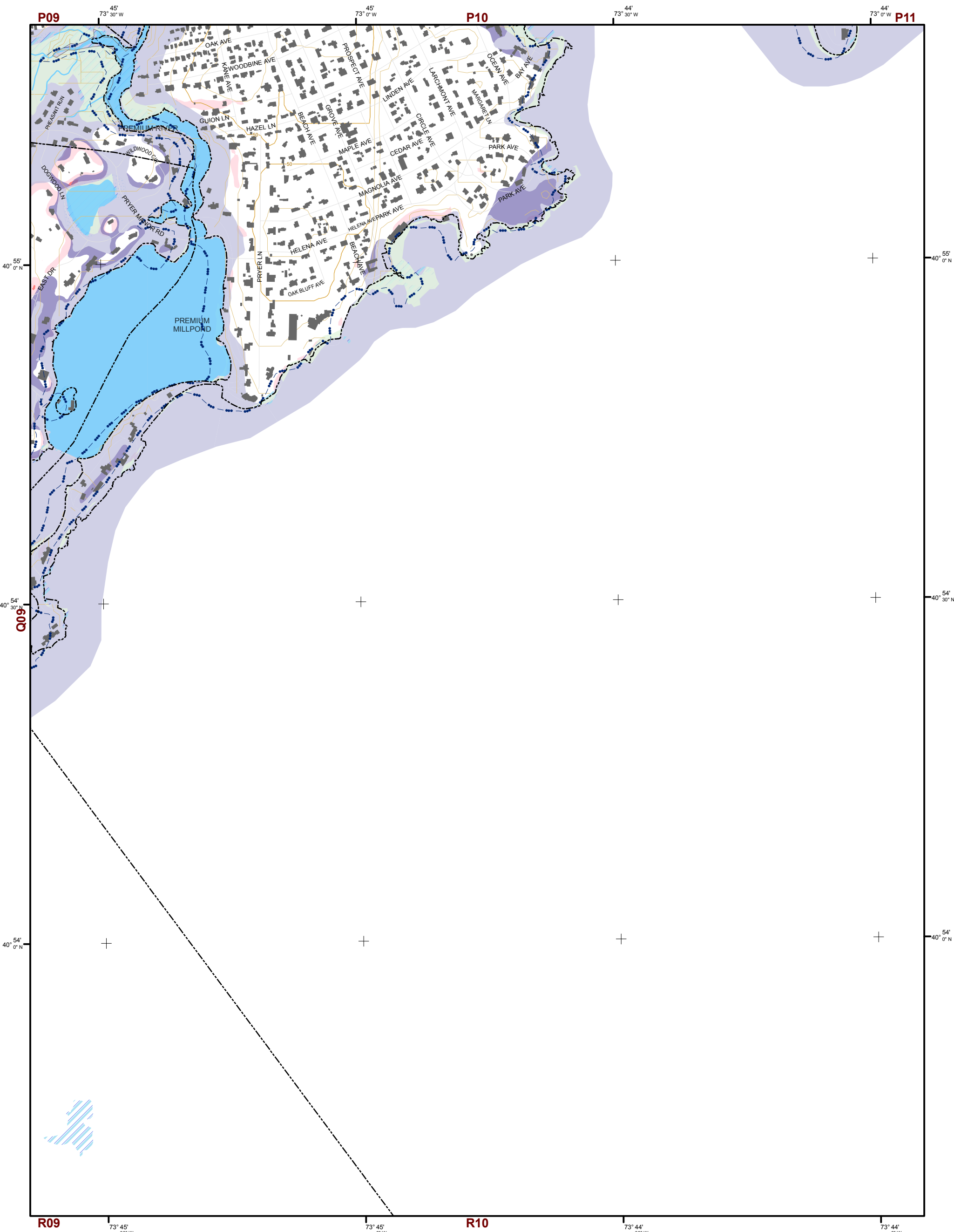
- 10' TOPO
- 50' TOPO
- Streams
- Lakes, Ponds or Reservoirs
- Aquifer
- Drainage Divides
- Hydric Soils
- Municipal Boundaries
- Buildings
- Slope**
 - 15% - 25%
 - 25% and Over
- NYSDEC Wetlands**
 - Greater than 12.4 acres
 - Less than 12.4 acres
- Floodplains**
 - 100
 - 500
- Tidal Wetlands
- National Wetlands Inventory



This map is for general information only and should not be used for site specific planning. Data was collected from a wide range of local, state, and federal GIS databases "as is". Westchester County assumes no liability to any party for any loss or damage caused by errors or omissions resulting from negligence, accident or any other cause.



Westchester County
 Andrew J. Spano, Westchester County Executive
 County Board of Legislators



1 inch equals 800 feet



Natural Resource Inventory

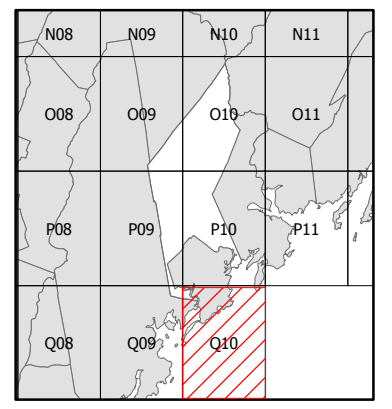
Town of Mamaroneck

Map # Q10

Legend

- 10' TOPO
- 50' TOPO
- Streams
- Lakes, Ponds or Reservoirs
- Aquifer
- Drainage Divides
- Hydric Soils
- Municipal Boundaries
- Buildings
- Slope**
 - 15% - 25%
 - 25% and Over
- National Wetlands Inventory
- NYSDEC Wetlands**
 - Greater than 12.4 acres
 - Less than 12.4 acres
- Floodplains**
 - 100
 - 500
- Tidal Wetlands

TILE INDEX



This map is for general information only and should not be used for site specific planning. Data was collected from a wide range of local, state, and federal GIS databases "as is." Westchester County assumes no liability to any party for any loss or damage caused by errors or omissions resulting from negligence, accident or any other cause.



Westchester County
 Andrew J. Spano, Westchester County Executive
 County Board of Legislators