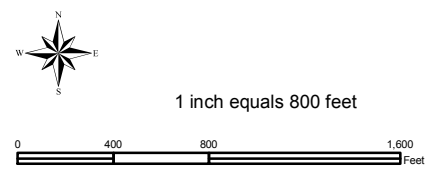
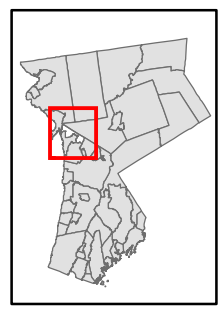


Natural Resource Inventory

Town of Ossining

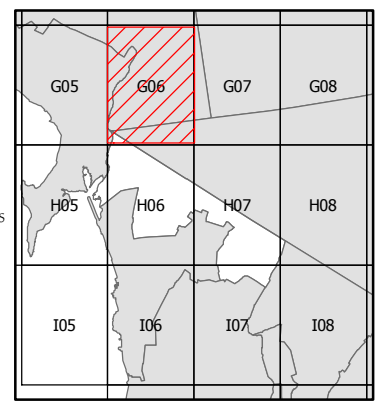
Map # **G06**



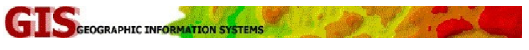
Legend

- 10' TOPO
- 50' TOPO
- Streams
- Lakes, Ponds or Reservoirs
- Aquifer
- Drainage Divides
- Hydric Soils
- Municipal Boundaries
- Tax Parcels
- Buildings
- 15% - 25%
- Over 25%
- National Wetlands Inventory
- NYSDEC Wetlands
Greater than 12.4 acres
- NYSDEC Wetlands
Less than 12.4 acres
- Floodplains
100
- Floodplains
500

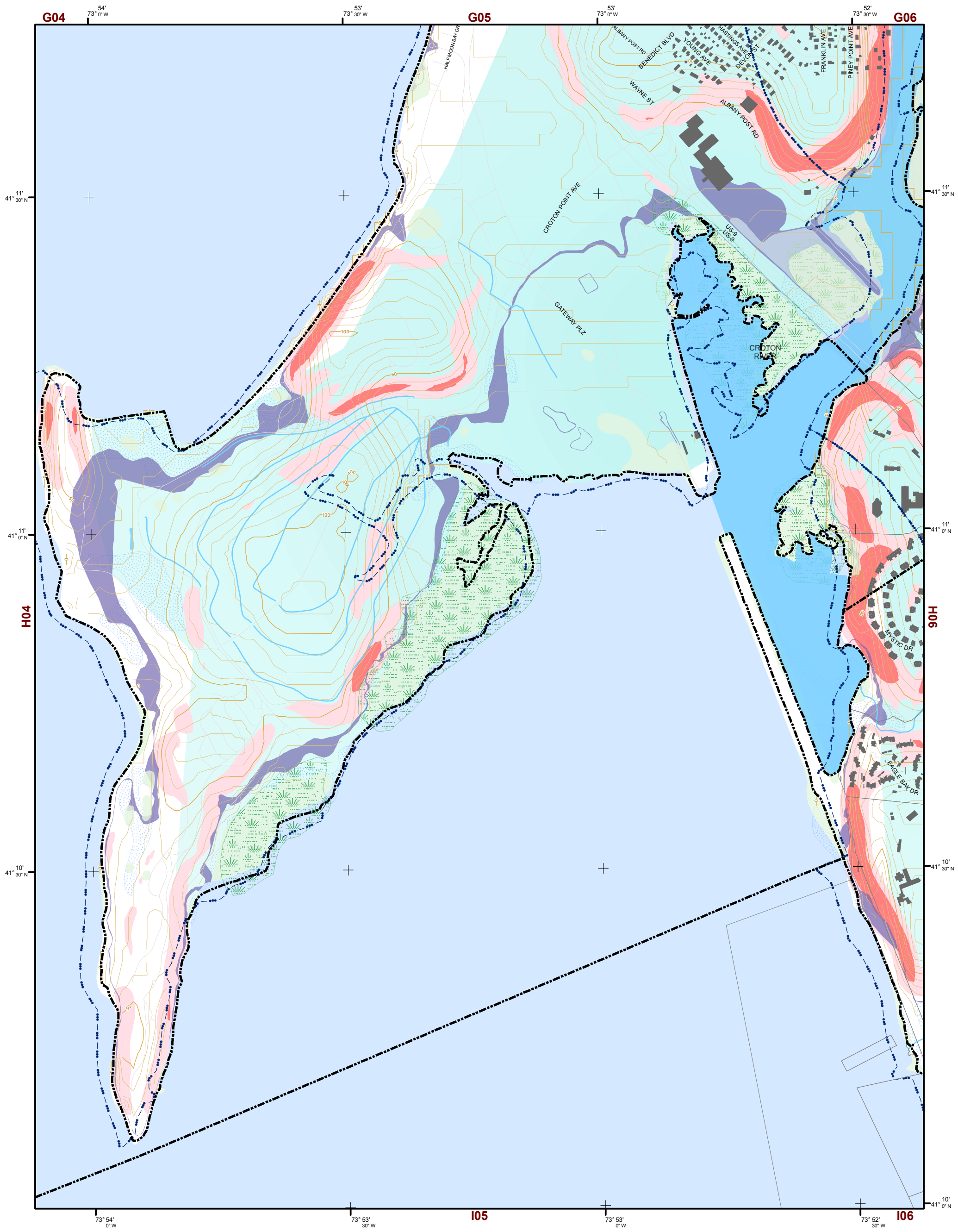
TILE INDEX



This map is for general information only and should not be used for site specific planning. Data was collected from a wide range of local, state, and federal GIS databases "as is." Westchester County assumes no liability to any party for any loss or damage caused by errors or omissions resulting from negligence, accident or any other cause.



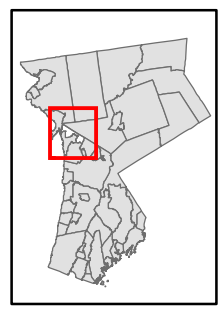
Westchester County Board of Legislators
Andrew J. Span, Westchester County Executive



Natural Resource Inventory

Town of Ossining

Map # H05



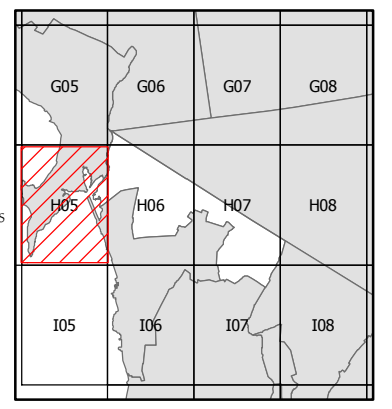
1 inch equals 800 feet



Legend

- 10' TOPO
- 50' TOPO
- Streams
- Lakes, Ponds or Reservoirs
- Aquifer
- Drainage Divides
- Hydric Soils
- Municipal Boundaries
- Tax Parcels
- Buildings
- 15% - 25%
- Over 25%
- National Wetlands Inventory
- NYSDEC Wetlands
Greater than 12.4 acres
- NYSDEC Wetlands
Less than 12.4 acres
- Floodplains
100
- Floodplains
500

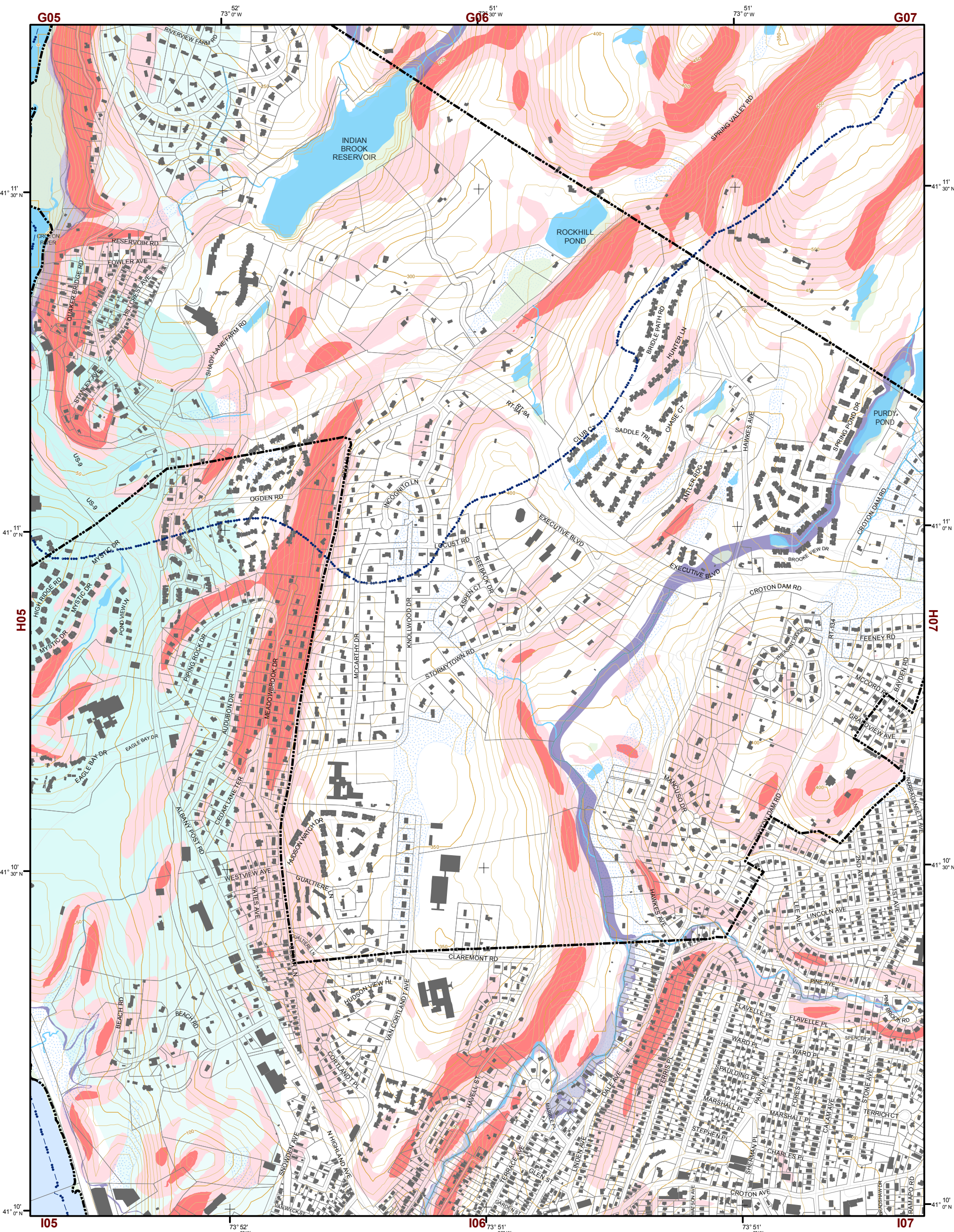
TILE INDEX



This map is for general information only and should not be used for site specific planning. Data was collected from a wide range of local, state, and federal GIS databases "as is." Westchester County assumes no liability to any party for any loss or damage caused by errors or omissions resulting from negligence, accident or any other cause.



Westchester County Board of Legislators
Andrew J. Sposi, Westchester County Executive

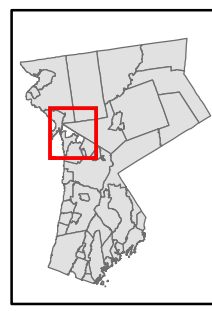


Natural Resource Inventory

Town of Ossining

Map # H06

TILE INDEX



1 inch equals 800 feet

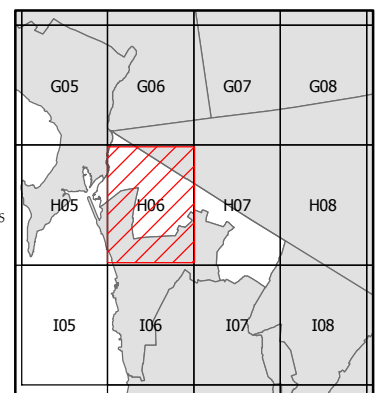


Legend

- 10' TOPO
- 50' TOPO
- Streams
- Lakes, Ponds or Reservoirs
- Aquifer
- Drainage Divides
- Hydric Soils
- Municipal Boundaries
- Tax Parcels
- Buildings
- 15% - 25%
- Over 25%
- National Wetlands Inventory

- NYSDEC Wetlands
- Greater than 12.4 acres
- Less than 12.4 acres

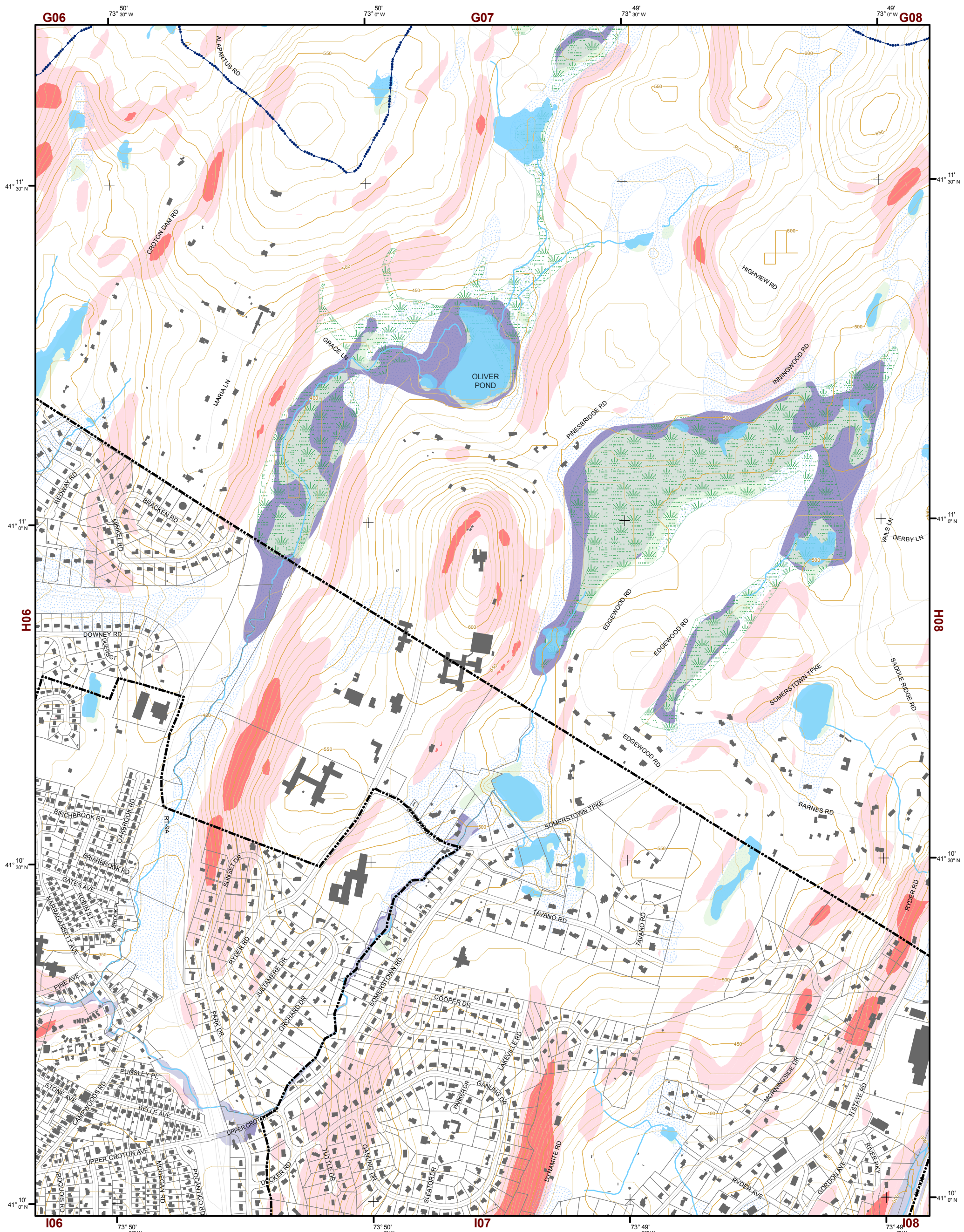
- Floodplains
- 100
- 500



This map is for general information only and should not be used for site specific planning. Data was collected from a wide range of local, state, and federal GIS databases "as is." Westchester County assumes no liability to any party for any loss or damage caused by errors or omissions resulting from negligence, accident or any other cause.



Westchester County Board of Legislators
 Andrew J. Span, Westchester County Executive

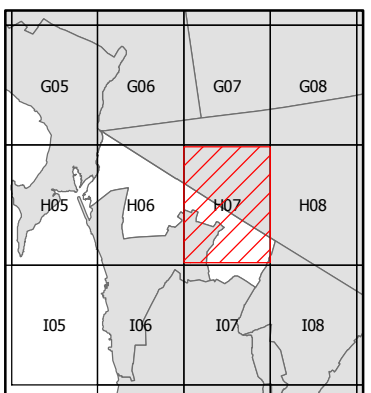


Natural Resource Inventory

Town of Ossining

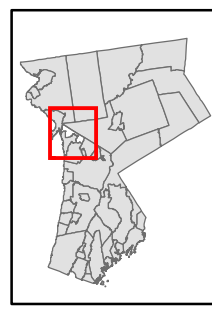
Map # H07

TILE INDEX

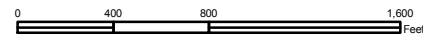


Legend

- 10' TOPO
- 50' TOPO
- Streams
- Lakes, Ponds or Reservoirs
- Aquifer
- Drainage Divides
- Hydric Soils
- Municipal Boundaries
- Tax Parcels
- Buildings
- 15% - 25%
- Over 25%
- National Wetlands Inventory
- Greater than 12.4 acres
- Less than 12.4 acres
- 100
- 500



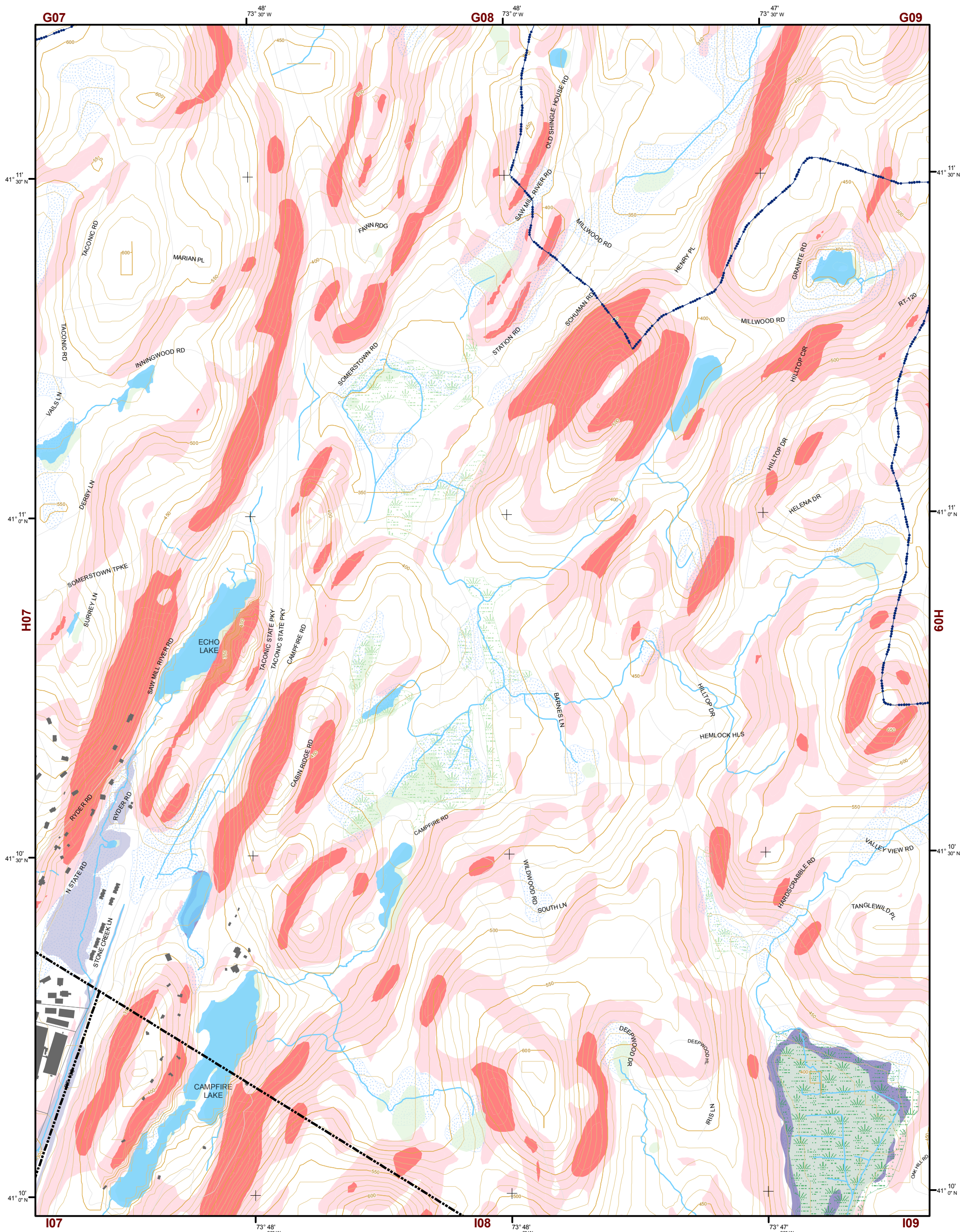
1 inch equals 800 feet



This map is for general information only and should not be used for site specific planning. Data was collected from a wide range of local, state, and federal GIS databases "as is". Westchester County assumes no liability to any party for any loss or damage caused by errors or omissions resulting from negligence, accident or any other cause.

Westchester County Board of Legislators
 Andrew J. Span, Westchester County Executive

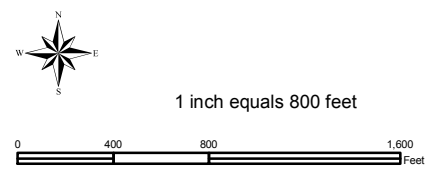
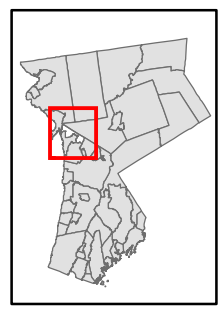




Natural Resource Inventory

Town of Ossining

Map # H08

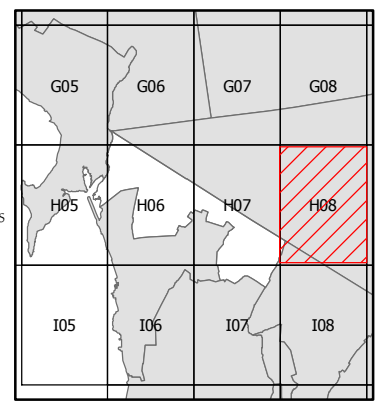


Legend

- 10' TOPO
- 50' TOPO
- Streams
- Lakes, Ponds or Reservoirs
- Aquifer
- Drainage Divides
- Hydric Soils
- Municipal Boundaries
- Tax Parcels
- Buildings
- 15% - 25%
- Over 25%
- National Wetlands Inventory

- NYSDEC Wetlands
 - Greater than 12.4 acres
 - Less than 12.4 acres
- Floodplains
 - 100
 - 500

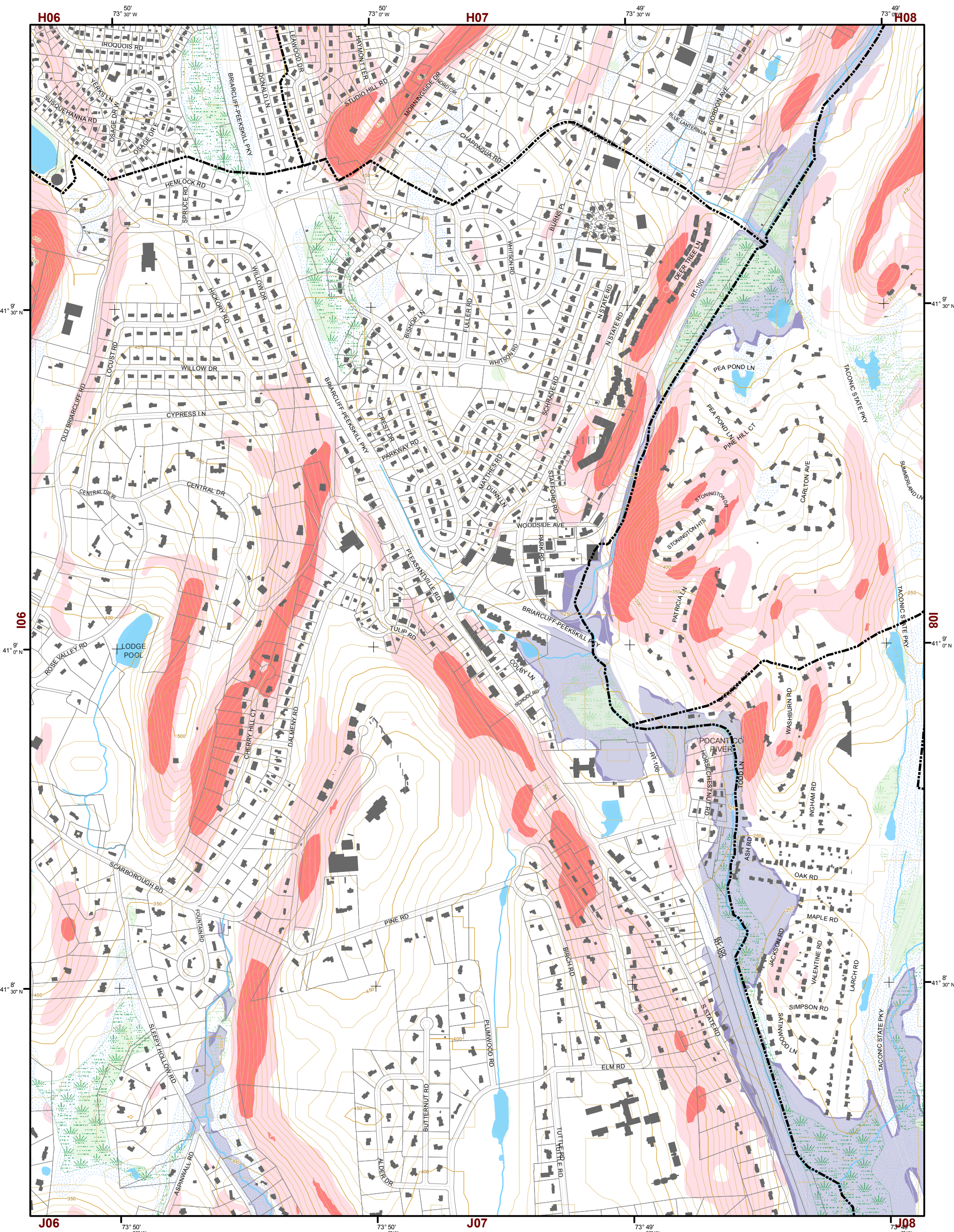
TILE INDEX



This map is for general information only and should not be used for site specific planning. Data was collected from a wide range of local, state, and federal GIS databases "as is." Westchester County assumes no liability to any party for any loss or damage caused by errors or omissions resulting from negligence, accident or any other cause.



Westchester County Board of Legislators
 Andrew J. Span, Westchester County Executive

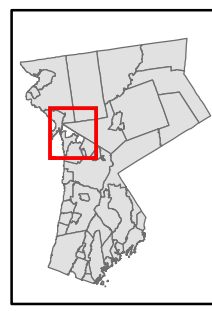


Natural Resource Inventory

Town of Ossining

Map # 107

TILE INDEX



1 inch equals 800 feet



Legend

- 10' TOPO
- 50' TOPO
- Streams
- Lakes, Ponds or Reservoirs
- Aquifer
- Drainage Divides
- Hydric Soils
- Municipal Boundaries
- Tax Parcels
- Buildings
- 15% - 25%
- Over 25%
- National Wetlands Inventory
- NYSDEC Wetlands
Greater than 12.4 acres
- NYSDEC Wetlands
Less than 12.4 acres
- Floodplains
100
- Floodplains
500

G05	G06	G07	G08
H05	H06	H07	H08
I05	I06	I07	I08

This map is for general information only and should not be used for site specific planning. Data was collected from a wide range of local, state, and federal GIS databases "as is." Westchester County assumes no liability to any party for any loss or damage caused by errors or omissions resulting from negligence, accident or any other cause.



Westchester County Board of Legislators
Andrew J. Span, Westchester County Executive