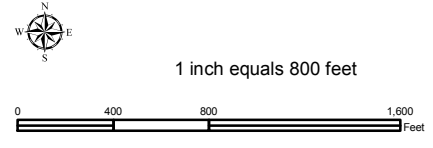
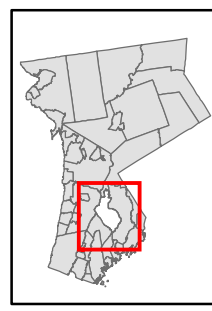


Natural Resource Inventory

City of White Plains

Map # L09

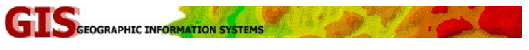


- Legend**
- 10' TOPO
 - 50' TOPO
 - Streams
 - Lakes, Ponds or Reservoirs
 - Aquifer
 - Drainage Divides
 - Hydric Soils
 - Municipal Boundaries
 - Tax Parcels
 - Buildings
 - Slope 15% - 25%
 - Slope 25% and Over
 - National Wetlands Inventory
 - NYSDEC Wetlands Greater than 12.4 acres
 - NYSDEC Wetlands Less than 12.4 acres
 - Floodplains 100
 - Floodplains 500

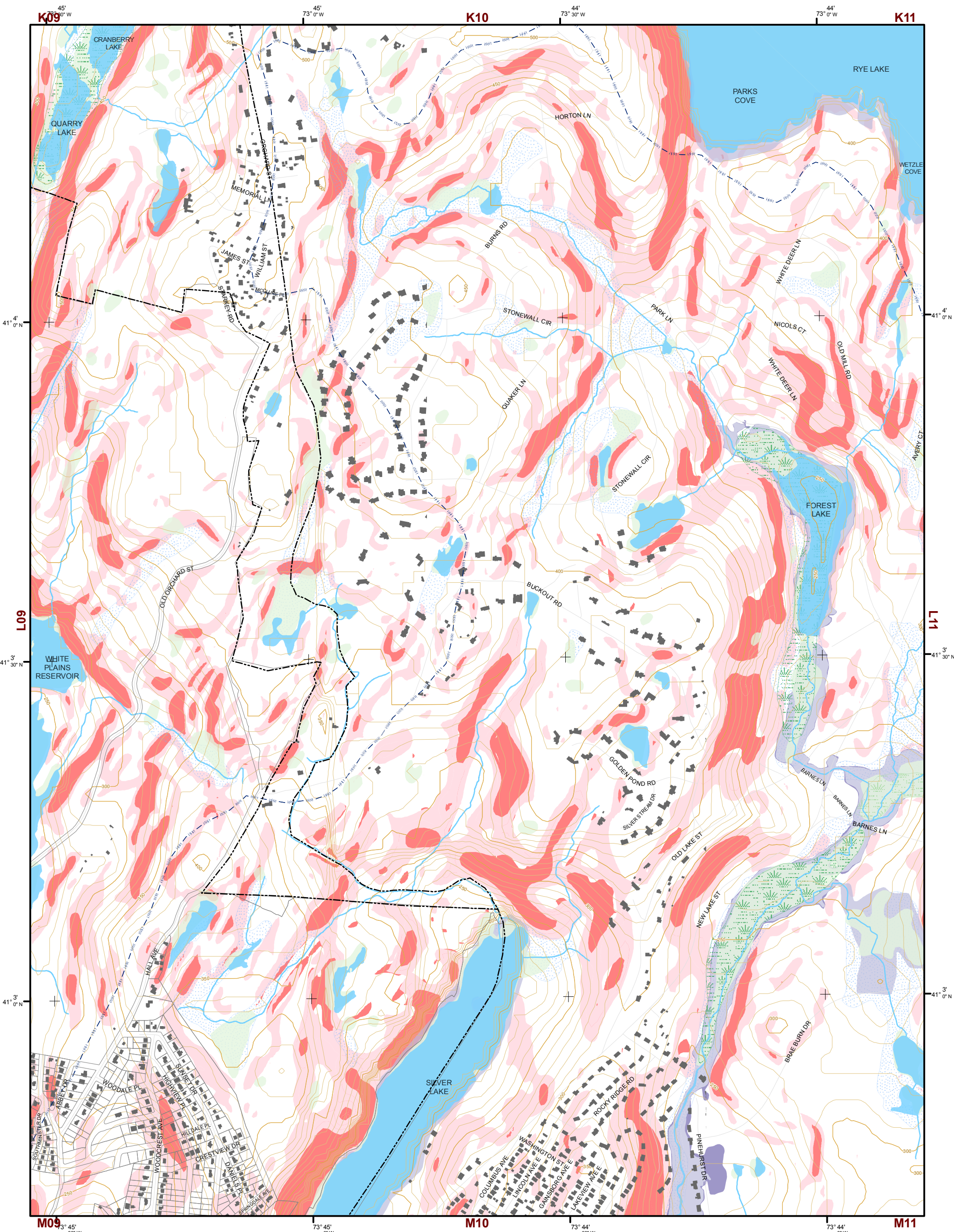
TILE INDEX

K07	K08	K09	K10	K11
L07	L08	L09	L10	L11
M07	M08	M09	M10	M11
N07	N08	N09	N10	N11
O07	O08	O09	O10	O11

This map is for general information only and should not be used for site specific planning. Data was collected from a wide range of local, state, and federal GIS databases "as is." Westchester County assumes no liability to any party for any loss or damage caused by errors or omissions resulting from negligence, accident or any other cause.



Westchester County Board of Legislators
 Andrew J. Span, Westchester County Executive

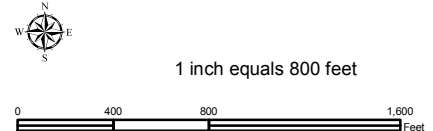
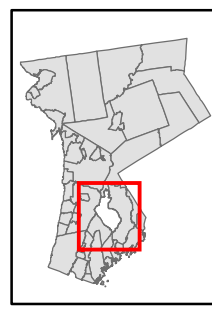


Natural Resource Inventory

City of White Plains

Map # L10

TILE INDEX



Legend

- 10' TOPO
- 50' TOPO
- Streams
- Lakes, Ponds or Reservoirs
- Aquifer
- Drainage Divides
- Hydric Soils
- Municipal Boundaries
- Tax Parcels
- Buildings
- Slope 15% - 25%
- Slope 25% and Over
- National Wetlands Inventory
- NYSDEC Wetlands Greater than 12.4 acres
- NYSDEC Wetlands Less than 12.4 acres
- Floodplains 100
- Floodplains 500

K07	K08	K09	K10	K11	
L07	L08	L09	L10	L11	L12
M07	M08	M09	M10	M11	M12
N07	N08	N09	N10	N11	N12
O07	O08	O09	O10	O11	O12

This map is for general information only and should not be used for site specific planning. Data was collected from a wide range of local, state, and federal GIS databases "as is." Westchester County assumes no liability to any party for any loss or damage caused by errors or omissions resulting from negligence, accident or any other cause.



Westchester County Board of Legislators
Andrew J. Span, Westchester County Executive

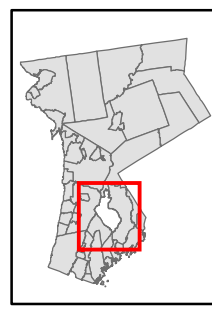


Natural Resource Inventory

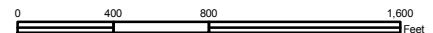
City of White Plains

Map # M08

TILE INDEX



1 inch equals 800 feet



Legend

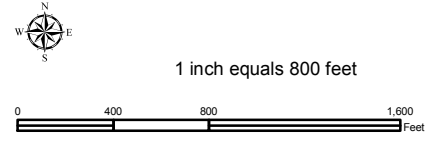
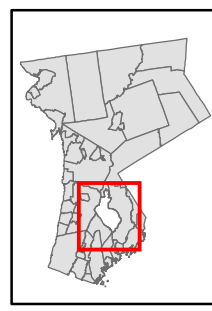
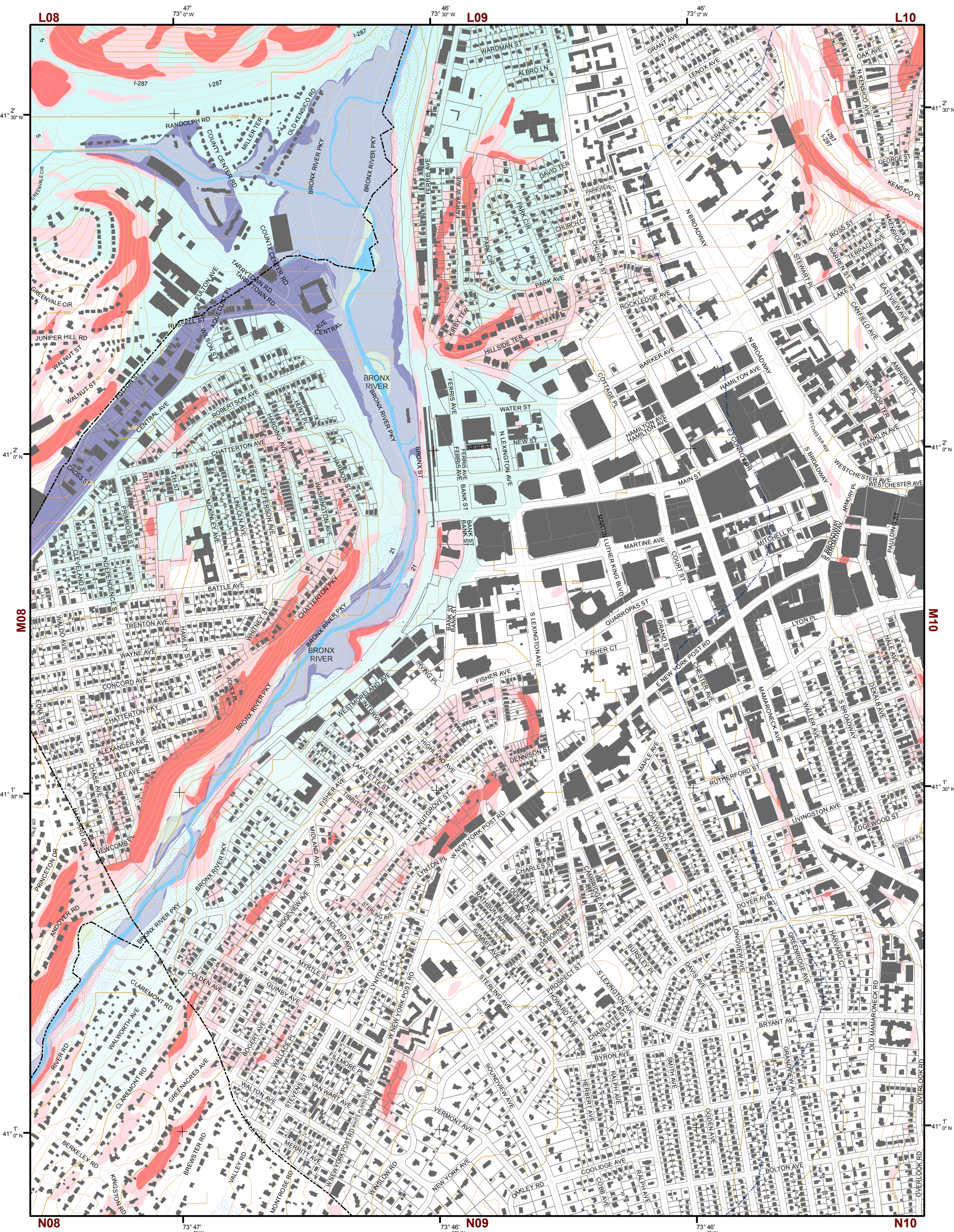
- 10' TOPO
- 50' TOPO
- Streams
- Lakes, Ponds or Reservoirs
- Aquifer
- Drainage Divides
- Hydric Soils
- Municipal Boundaries
- Tax Parcels
- Buildings
- Slope**
- 15% - 25%
- 25% and Over
- National Wetlands Inventory
- NYSDEC Wetlands**
- Greater than 12.4 acres
- Less than 12.4 acres
- Floodplains**
- 100
- 500

K07	K08	K09	K10	K11
L07	L08	L09	L10	L11
M07	M08	M09	M10	M11
N07	N08	N09	N10	N11
O07	O08	O09	O10	O11

This map is for general information only and should not be used for site specific planning. Data was collected from a wide range of local, state, and federal GIS databases "as is." Westchester County assumes no liability to any party for any loss or damage caused by errors or omissions resulting from negligence, accident or any other cause.



Westchester County Board of Legislators



Natural Resource Inventory

City of White Plains

Map # M09

Legend

- 10' TOPO
- 50' TOPO
- Streams
- Lakes, Ponds or Reservoirs
- Aquifer
- Drainage Divides
- Hydric Soils
- Municipal Boundaries
- Tax Parcels
- Buildings
- Slope 15% - 25%
- Slope 25% and Over
- National Wetlands Inventory
- NYSDEC Wetlands Greater than 12.4 acres
- NYSDEC Wetlands Less than 12.4 acres
- Floodplains 100
- Floodplains 500

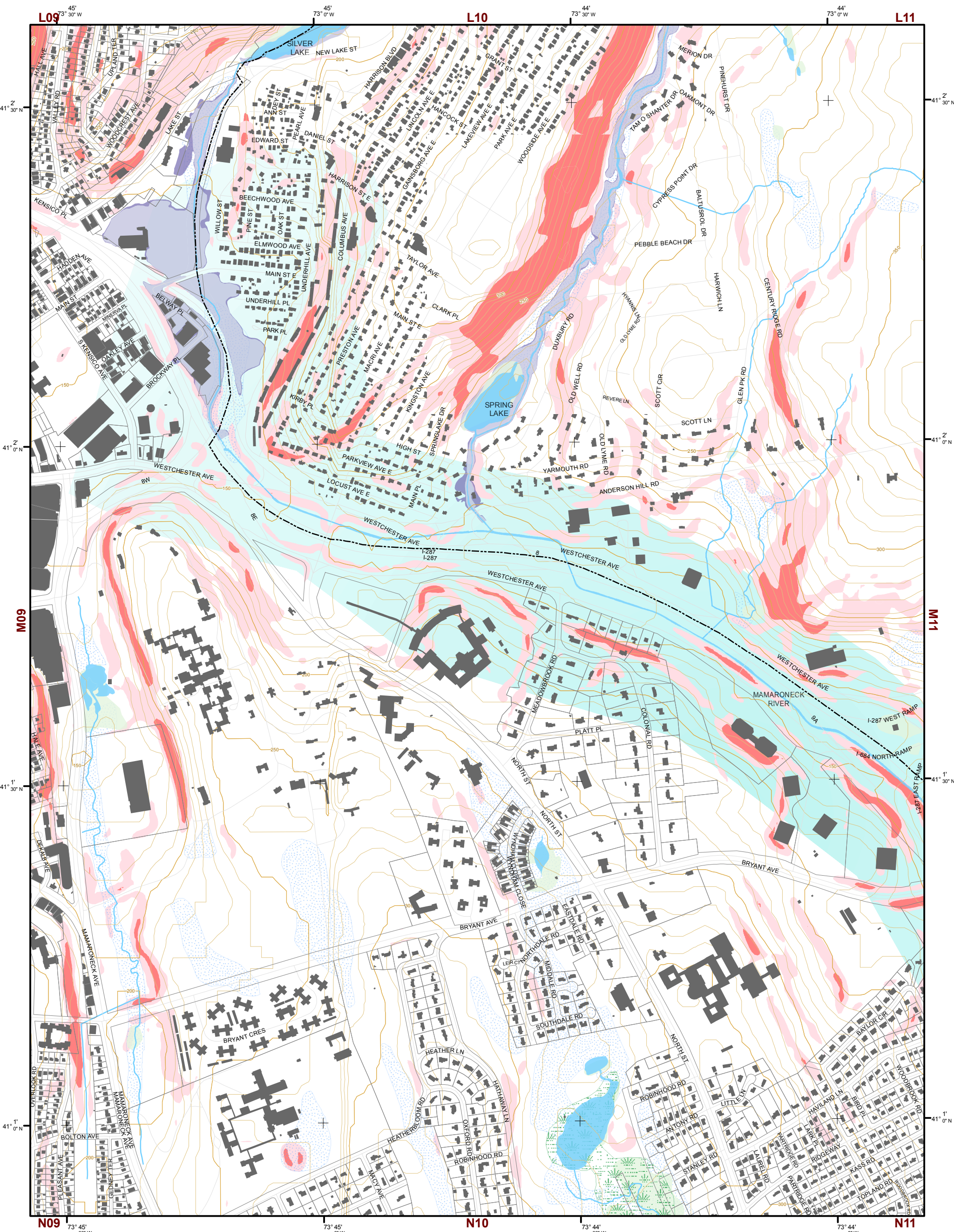
TILE INDEX

K07	K08	K09	K10	K11	
L07	L08	L09	L10	L11	L12
M07	M08	M09	M10	M11	M12
N07	N08	N09	N10	N11	N12
O07	O08	O09	O10	O11	O12

This map is for general information only and should not be used for site specific planning. Data was collected from a wide range of local, state, and federal GIS databases "as is." Westchester County assumes no liability to any party for any loss or damage caused by errors or omissions resulting from negligence, accident or any other cause.

Westchester County
County Board of Legislators





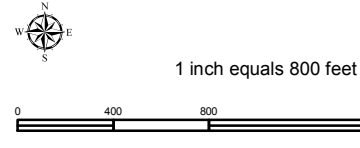
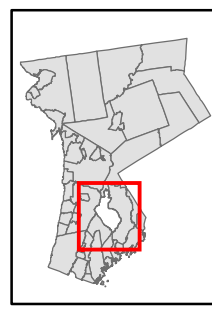
Natural Resource Inventory

City of White Plains

Map # M10

TILE INDEX

K07	K08	K09	K10	K11
L07	L08	L09	L10	L11
M07	M08	M09	M10	M11
N07	N08	N09	N10	N11
O07	O08	O09	O10	O11



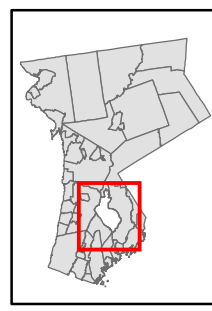
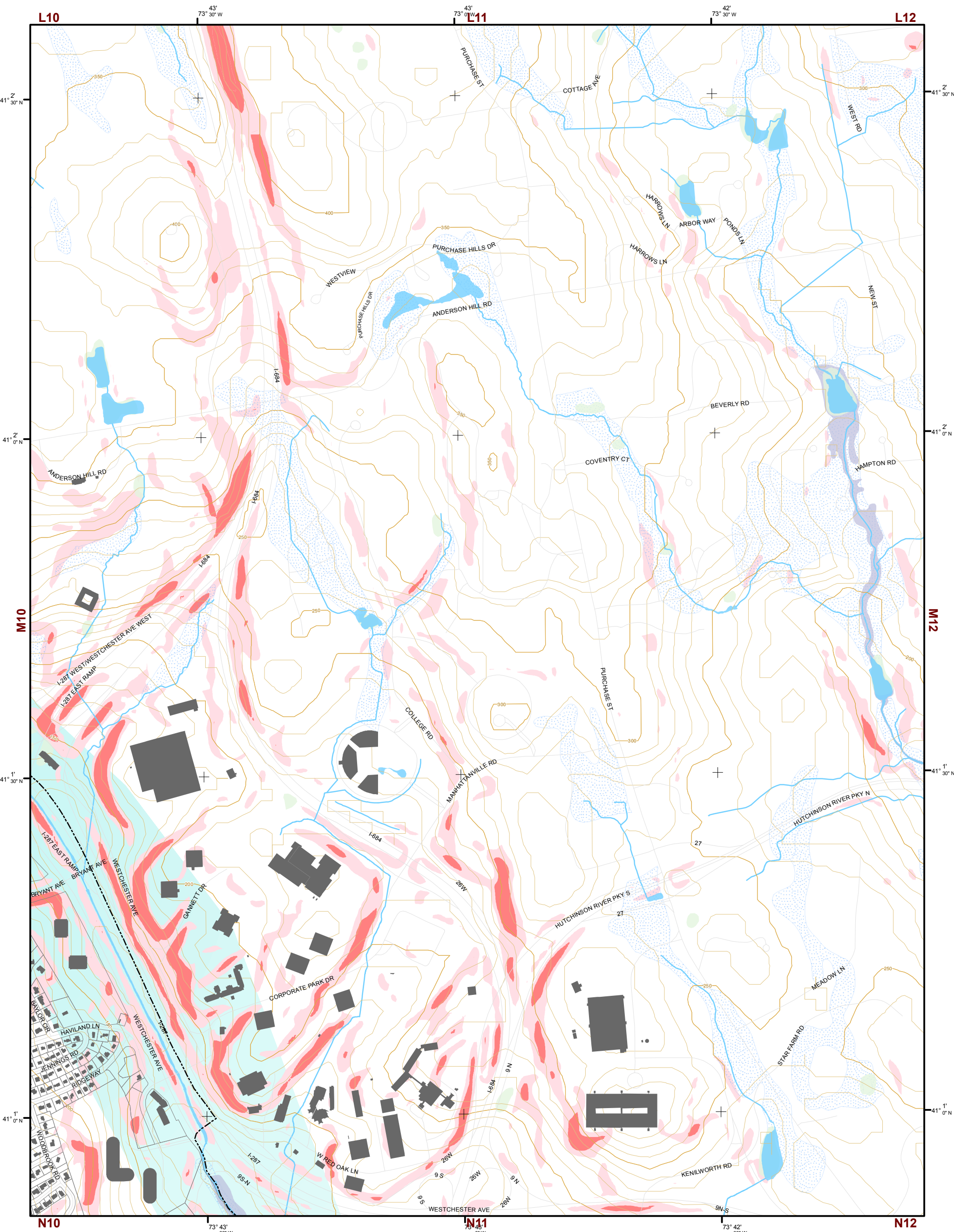
Legend

- 10' TOPO
- 50' TOPO
- Streams
- Lakes, Ponds or Reservoirs
- Aquifer
- Drainage Divides
- Hydric Soils
- Municipal Boundaries
- Tax Parcels
- Buildings
- Slope 15% - 25%
- Slope 25% and Over
- National Wetlands Inventory
- NYSDEC Wetlands Greater than 12.4 acres
- NYSDEC Wetlands Less than 12.4 acres
- Floodplains 100
- Floodplains 500

This map is for general information only and should not be used for site specific planning. Data was collected from a wide range of local, state, and federal GIS databases "as is." Westchester County assumes no liability to any party for any loss or damage caused by errors or omissions resulting from negligence, accident or any other cause.



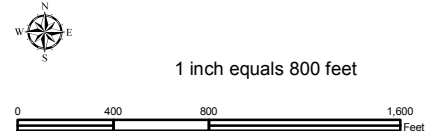
Westchester County Board of Legislators



Natural Resource Inventory

City of White Plains

Map # M11



Legend

- 10' TOPO
- 50' TOPO
- Streams
- Lakes, Ponds or Reservoirs
- Aquifer
- Drainage Divides
- Hydric Soils
- Municipal Boundaries
- Tax Parcels
- Buildings
- Slope**
- 15% - 25%
- 25% and Over
- National Wetlands Inventory

- NYSDEC Wetlands**
- Greater than 12.4 acres
- Less than 12.4 acres
- Floodplains**
- 100
- 500

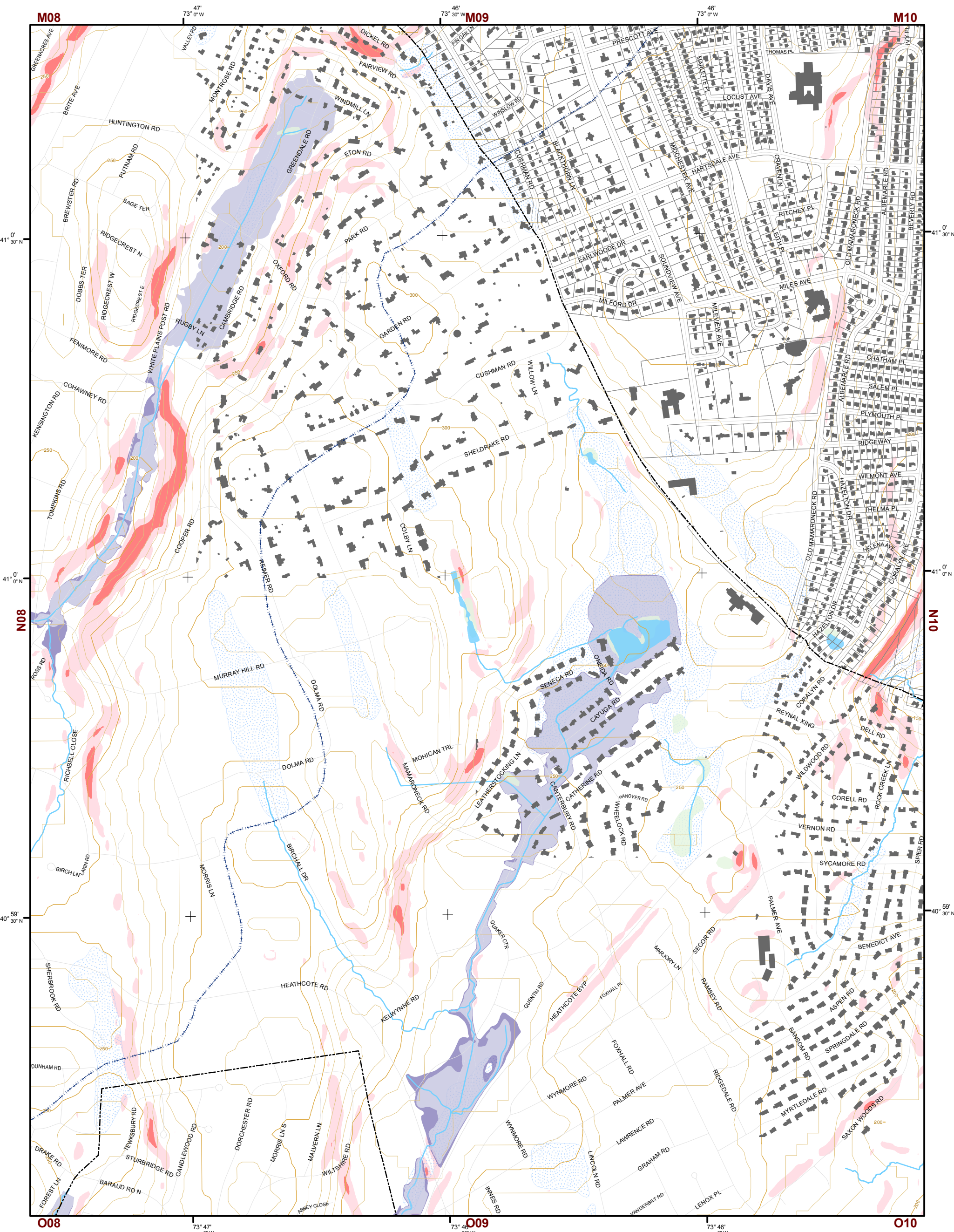
TILE INDEX

K07	K08	K09	K10	K11	K12
L07	L08	L09	L10	L11	L12
M07	M08	M09	M10	M11	M12
N07	N08	N09	N10	N11	N12
O07	O08	O09	O10	O11	O12

This map is for general information only and should not be used for site specific planning. Data was collected from a wide range of local, state, and federal GIS databases "as is." Westchester County assumes no liability to any party for any loss or damage caused by errors or omissions resulting from negligence, accident or any other cause.



Westchester County Board of Legislators
Andrew J. Span, Westchester County Executive



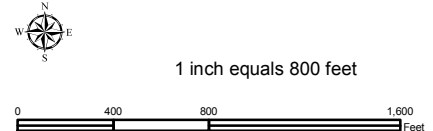
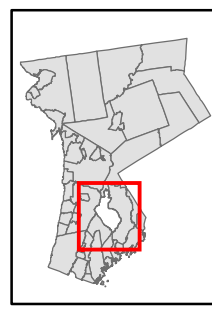
Natural Resource Inventory

City of White Plains

Map # N09

TILE INDEX

K07	K08	K09	K10	K11
L07	L08	L09	L10	L11
M07	M08	M09	M10	M11
N07	N08	N09	N10	N11
O07	O08	O09	O10	O11



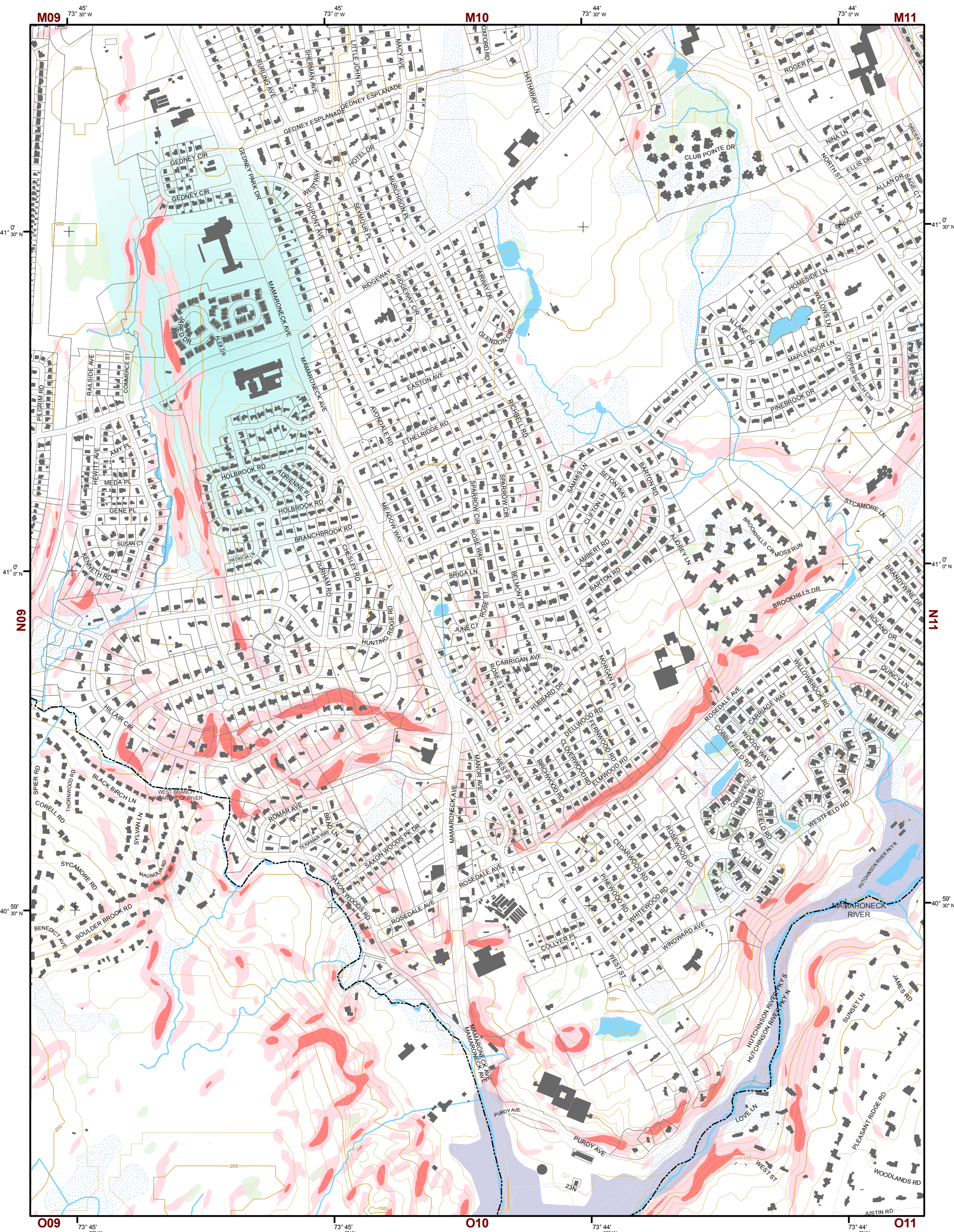
Legend

- 10' TOPO
- 50' TOPO
- Streams
- Lakes, Ponds or Reservoirs
- Aquifer
- Drainage Divides
- Hydric Soils
- Municipal Boundaries
- Tax Parcels
- Buildings
- Slope 15% - 25%
- Slope 25% and Over
- National Wetlands Inventory
- NYSDEC Wetlands Greater than 12.4 acres
- NYSDEC Wetlands Less than 12.4 acres
- Floodplains 100
- Floodplains 500

This map is for general information only and should not be used for site specific planning. Data was collected from a wide range of local, state, and federal GIS databases "as is." Westchester County assumes no liability to any party for any loss or damage caused by errors or omissions resulting from negligence, accident or any other cause.



Westchester County Board of Legislators
Andrew J. Span, Westchester County Executive

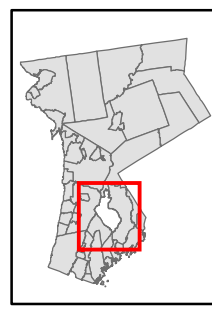


Natural Resource Inventory

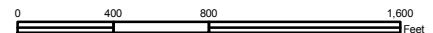
City of White Plains

Map # N10

TILE INDEX



1 inch equals 800 feet



Legend

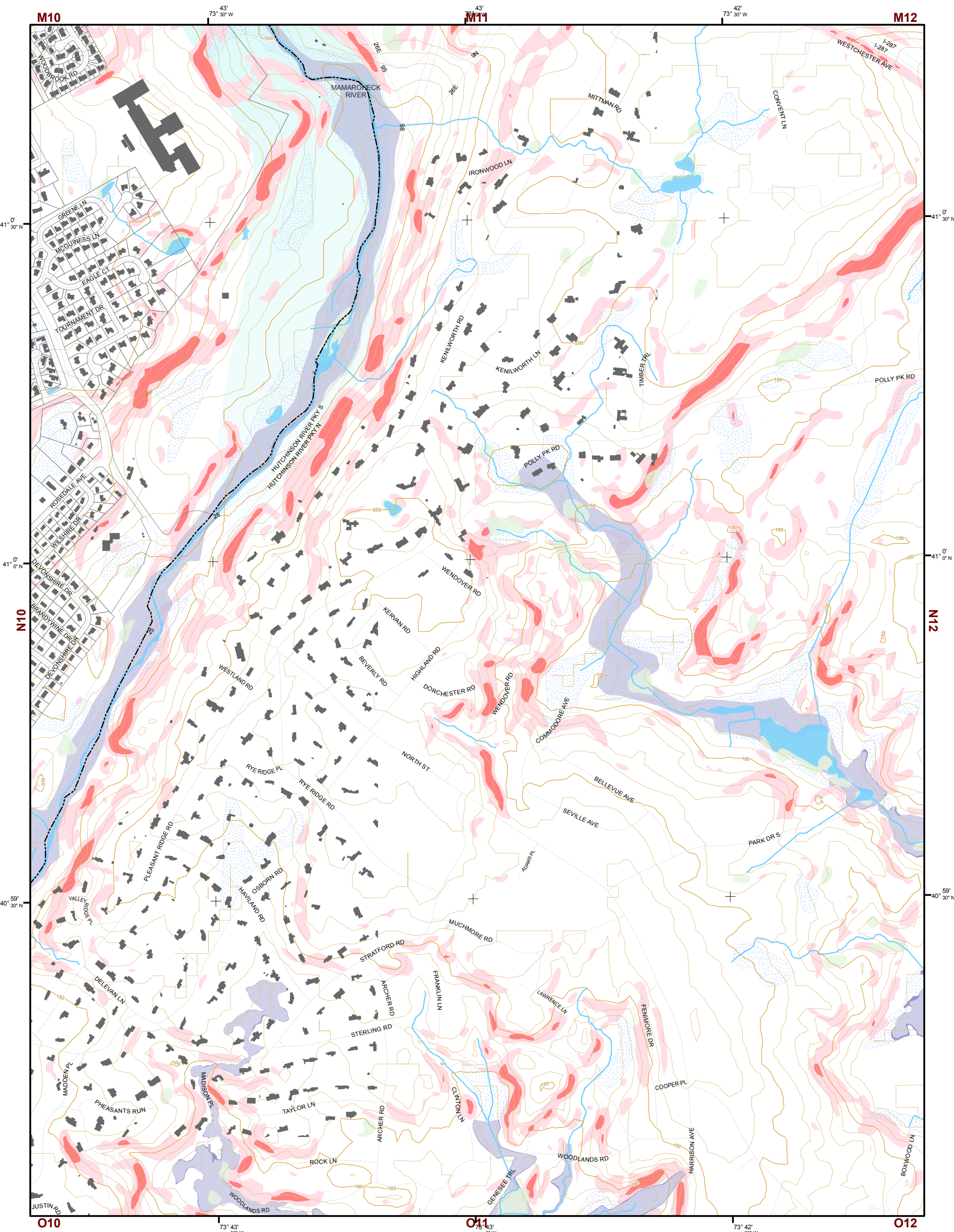
- 10' TOPO
- 50' TOPO
- Streams
- Lakes, Ponds or Reservoirs
- Aquifer
- Drainage Divides
- Hydric Soils
- Municipal Boundaries
- Tax Parcels
- Buildings
- Slope 15% - 25%
- Slope 25% and Over
- National Wetlands Inventory
- NYSDEC Wetlands Greater than 12.4 acres
- NYSDEC Wetlands Less than 12.4 acres
- Floodplains 100
- Floodplains 500

K07	K08	K09	K10	K11
L07	L08	L09	L10	L11
M07	M08	M09	M10	M11
N07	N08	N09	N10	N11
O07	O08	O09	O10	O11

This map is for general information only and should not be used for site specific planning. Data was collected from a wide range of local, state, and federal GIS databases "as is." Westchester County assumes no liability to any party for any loss or damage caused by errors or omissions resulting from negligence, accident or any other cause.



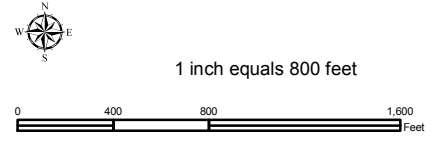
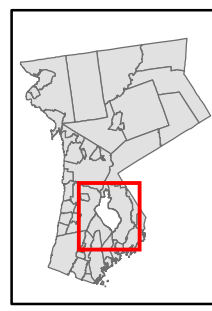
Westchester County Board of Legislators
Andrew J. Span, Westchester County Executive



Natural Resource Inventory

City of White Plains

Map # N11



Legend

- 10' TOPO
- 50' TOPO
- Streams
- Lakes, Ponds or Reservoirs
- Aquifer
- Drainage Divides
- Hydric Soils
- Municipal Boundaries
- Tax Parcels
- Buildings
- Slope**
 - 15% - 25%
 - 25% and Over
- NYSDEC Wetlands**
 - Greater than 12.4 acres
 - Less than 12.4 acres
- Floodplains**
 - 100
 - 500
- National Wetlands Inventory

TILE INDEX

K07	K08	K09	K10	K11	
L07	L08	L09	L10	L11	L12
M07	M08	M09	M10	M11	M12
N07	N08	N09	N10	N11	N12
O07	O08	O09	O10	O11	O12

This map is for general information only and should not be used for site specific planning. Data was collected from a wide range of local, state, and federal GIS databases "as is." Westchester County assumes no liability to any party for any loss or damage caused by errors or omissions resulting from negligence, accident or any other cause.



Westchester County Board of Legislators
 Andrew J. Span, Westchester County Executive