

# Natural Resource Inventory

## Town of Yorktown

Map # C06

### Legend

- 10' TOPO
- 50' TOPO
- Streams
- Lakes, Ponds or Reservoirs
- Aquifer
- Drainage Divides
- Hydric Soils
- Municipal Boundaries
- Tax Parcels
- Buildings
- Slope 15% - 25%
- Slope 25% and Over
- National Wetlands Inventory
- NYSDEC Wetlands Greater than 12.4 acres
- NYSDEC Wetlands Less than 12.4 acres
- Floodplains 100
- Floodplains 500

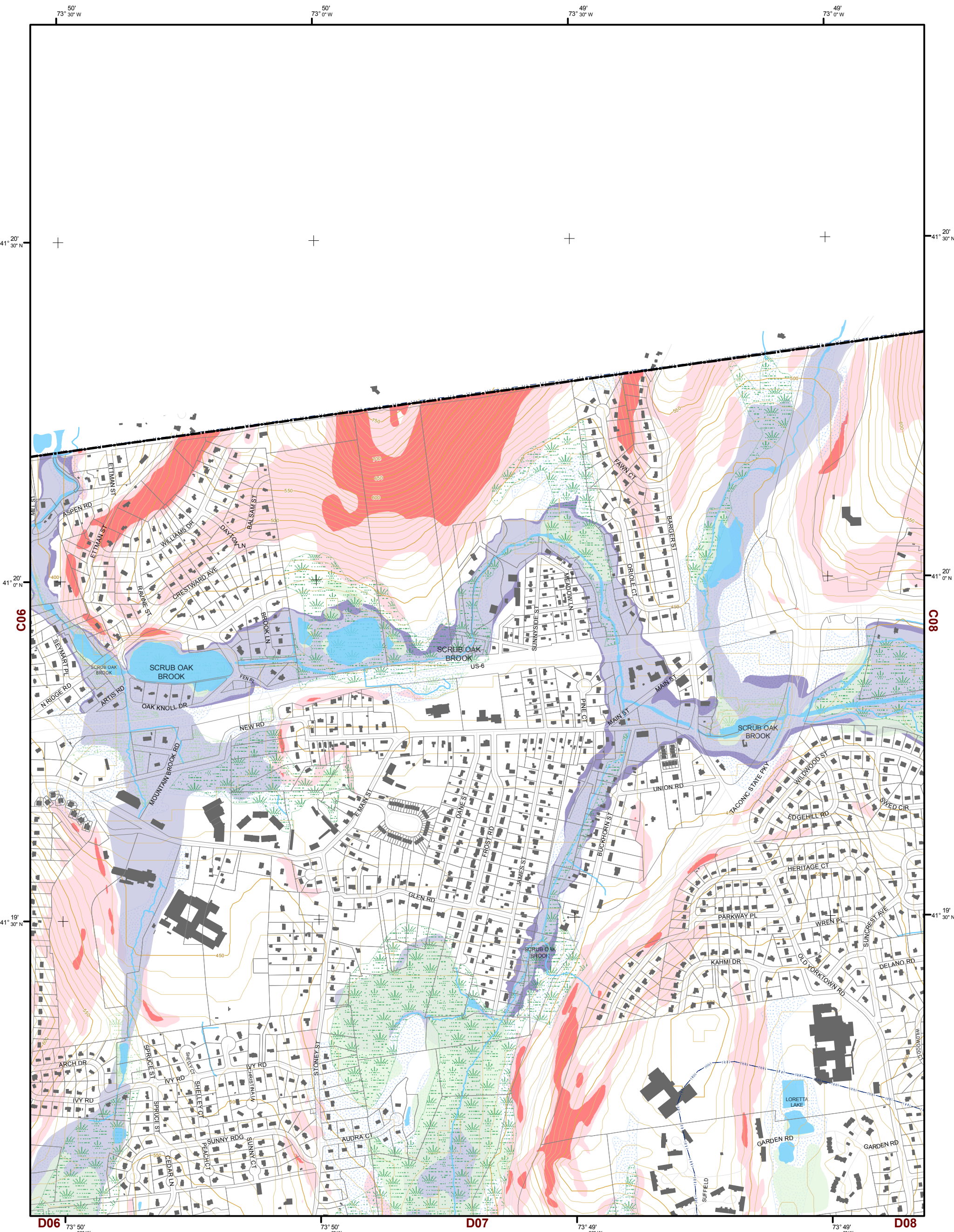
### TILE INDEX

C05	C06	C07	C08	C09	C10	C11
D05	D06	D07	D08	D09	D10	D11
E05	E06	E07	E08	E09	E10	E11
F05	F06	F07	F08	F09	F10	F11
G05	G06	G07	G08	G09	G10	G11

This map is for general information only and should not be used for site specific planning. Data was collected from a wide range of local, state, and federal GIS databases "as is." Westchester County assumes no liability to any party for any loss or damage caused by errors or omissions resulting from negligence, accident or any other cause.



Westchester County Board of Legislators  
Andrew J. Span, Westchester County Executive



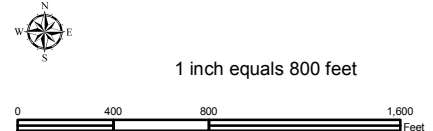
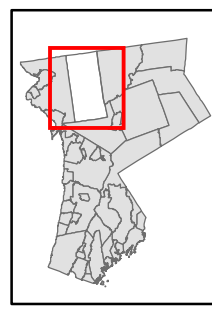
# Natural Resource Inventory

## Town of Yorktown

Map # C07

TILE INDEX

C05	C06	C07	C08	C09	C10	C11
D05	D06	D07	D08	D09	D10	D11
E05	E06	E07	E08	E09	E10	E11
F05	F06	F07	F08	F09	F10	F11
G05	G06	G07	G08	G09	G10	G11



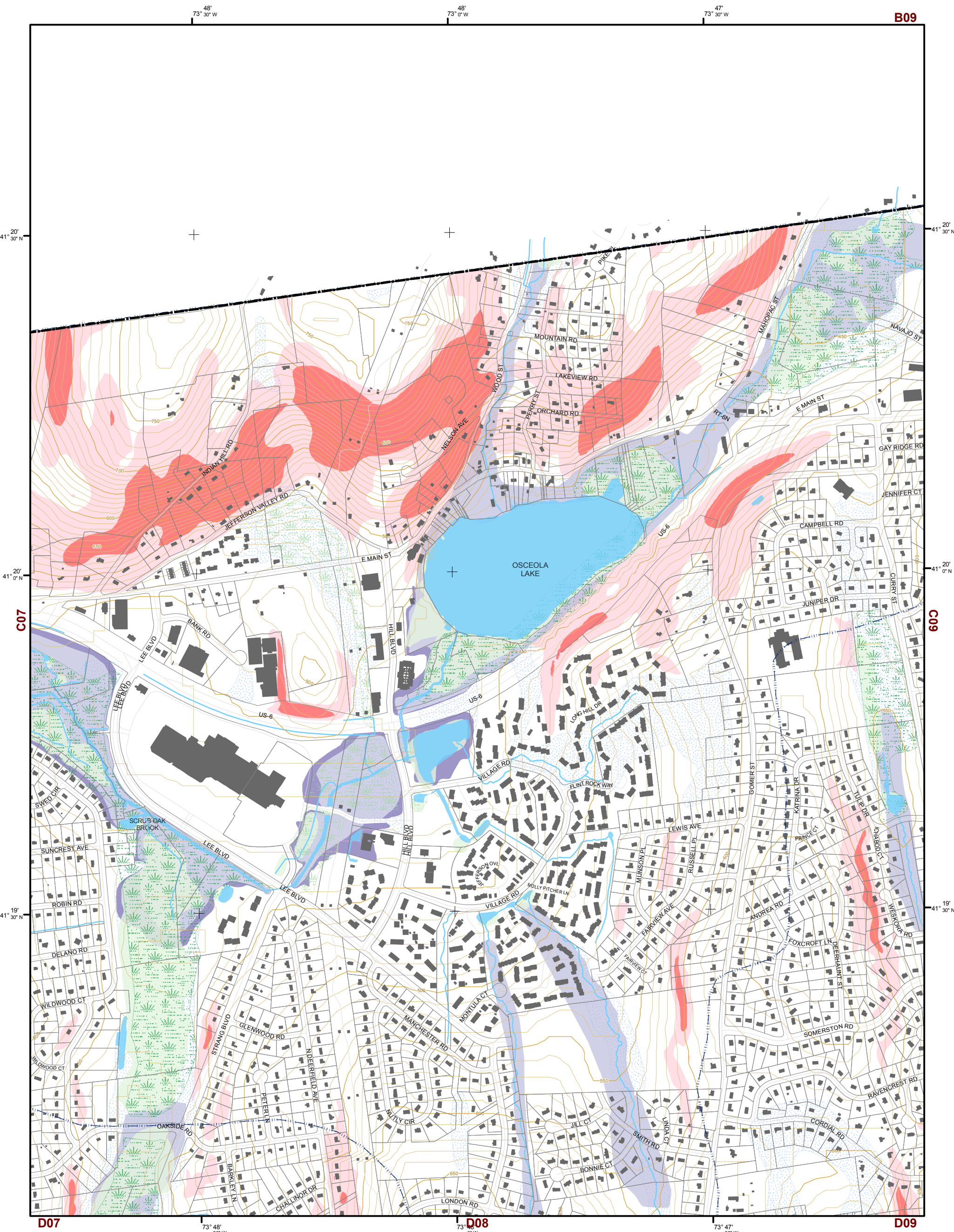
Legend

- 10' TOPO
- 50' TOPO
- Streams
- Lakes, Ponds or Reservoirs
- Aquifer
- Drainage Divides
- Hydric Soils
- Municipal Boundaries
- Tax Parcels
- Buildings
- Slope**
  - 15% - 25%
  - 25% and Over
- NYSDEC Wetlands**
  - Greater than 12.4 acres
  - Less than 12.4 acres
- Floodplains**
  - 100
  - 500
- National Wetlands Inventory

This map is for general information only and should not be used for site specific planning. Data was collected from a wide range of local, state, and federal GIS databases "as is." Westchester County assumes no liability to any party for any loss or damage caused by errors or omissions resulting from negligence, accident or any other cause.



Westchester  
County Board of Legislators  
Andrew J. Span, Westchester County Executive



48° 73° 30' W      48° 73° 0' W      47° 73° 30' W

B09

41° 20' 30" N

41° 20' 30" N

41° 20' 30" N

41° 20' 30" N

19° 30' N

19° 30' N

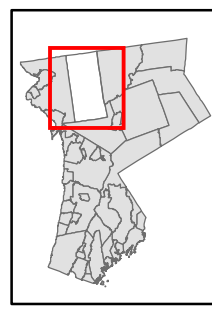
D07      73° 48' 30" W      D08      73° 0' W      D09      73° 47' 30" W

# Natural Resource Inventory

## Town of Yorktown

Map # C08

TILE INDEX



1 inch equals 800 feet



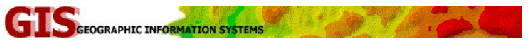
### Legend

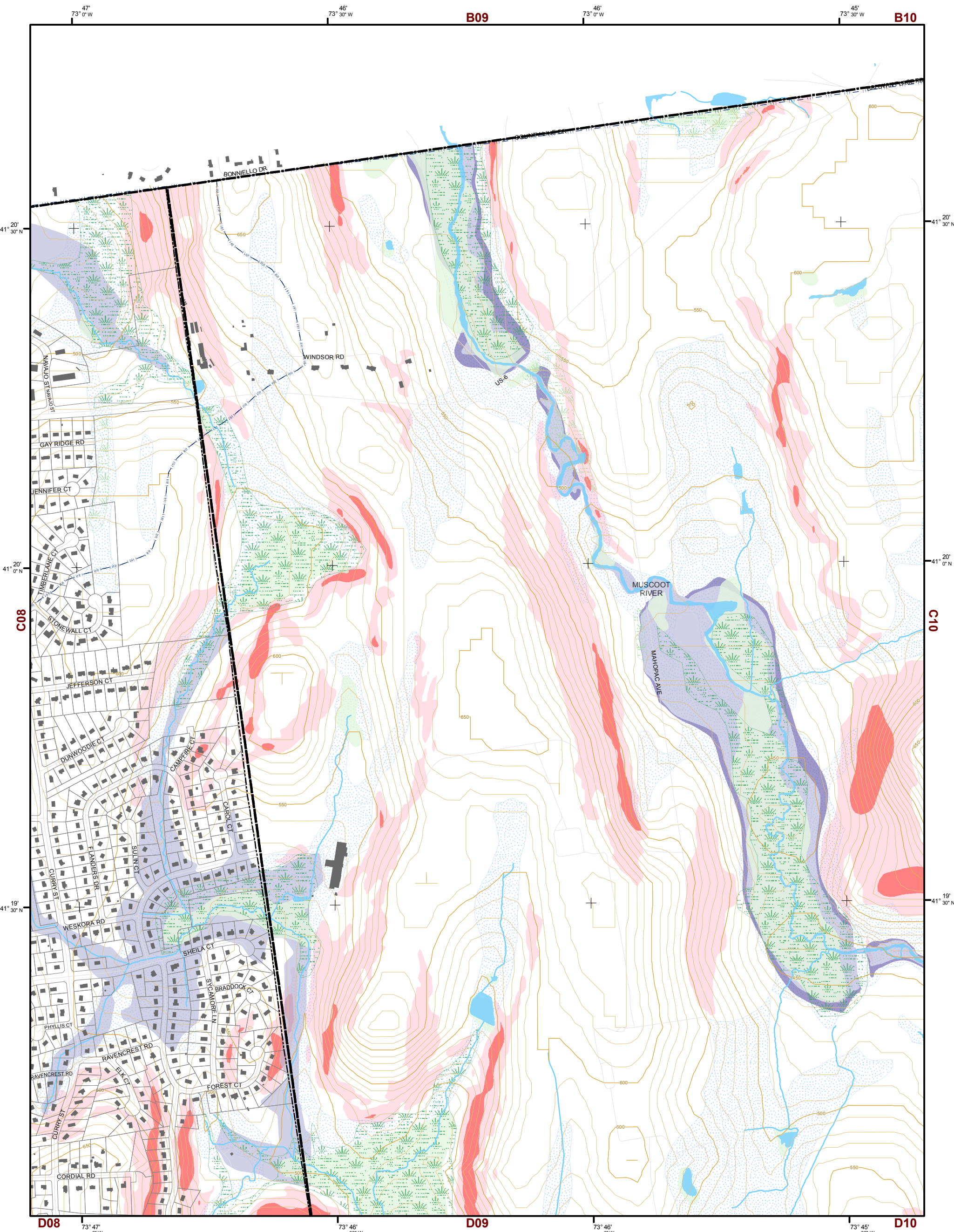
- 10' TOPO
- 50' TOPO
- Streams
- Lakes, Ponds or Reservoirs
- Aquifer
- Drainage Divides
- Hydric Soils
- Municipal Boundaries
- Tax Parcels
- Buildings
- Slope 15% - 25%
- Slope 25% and Over
- National Wetlands Inventory
- NYSDEC Wetlands Greater than 12.4 acres
- NYSDEC Wetlands Less than 12.4 acres
- Floodplains 100
- Floodplains 500

C05	C06	C07	C08	C09	C10	C11
D05	D06	D07	D08	D09	D10	D11
E05	E06	E07	E08	E09	E10	E11
F05	F06	F07	F08	F09	F10	F11
G05	G06	G07	G08	G09	G10	G11

This map is for general information only and should not be used for site specific planning. Data was collected from a wide range of local, state, and federal GIS databases "as is." Westchester County assumes no liability to any party for any loss or damage caused by errors or omissions resulting from negligence, accident or any other cause.

Westchester County Board of Legislators  
Andrew J. Span, Westchester County Executive





# Natural Resource Inventory

## Town of Yorktown

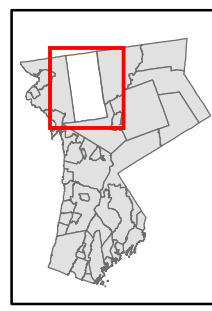
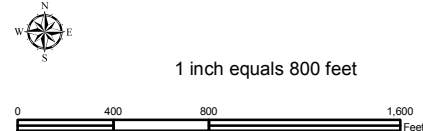
Map # C09

### TILE INDEX

C05	C06	C07	C08	C09	C10	C11
D05	D06	D07	D08	D09	D10	D11
E05	E06	E07	E08	E09	E10	E11
F05	F06	F07	F08	F09	F10	F11
G05	G06	G07	G08	G09	G10	G11

### Legend

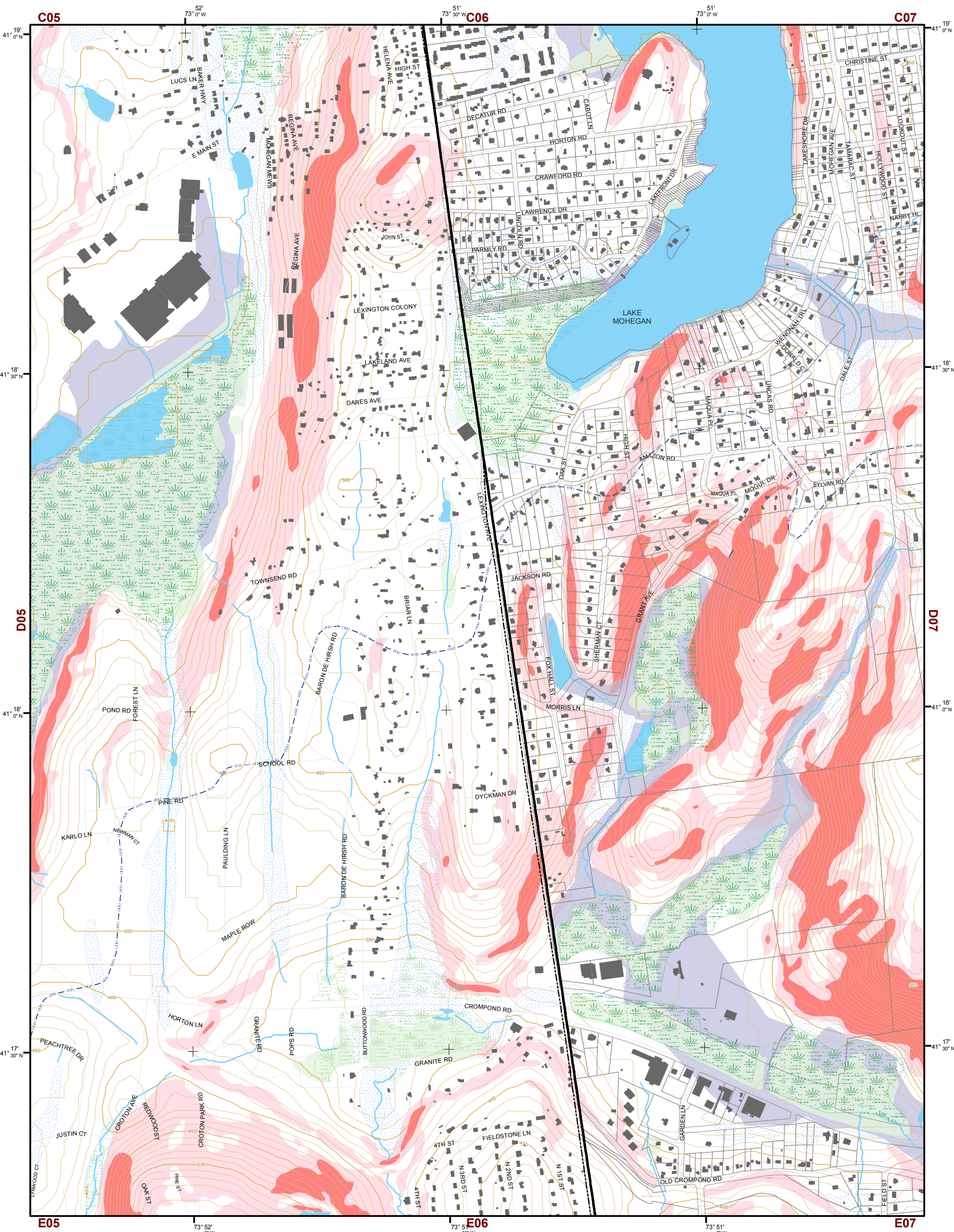
- 10' TOPO
- 50' TOPO
- Streams
- Lakes, Ponds or Reservoirs
- Aquifer
- Drainage Divides
- Hydric Soils
- Municipal Boundaries
- Tax Parcels
- Buildings
- Slope**
  - 15% - 25%
  - 25% and Over
- NYSDEC Wetlands**
  - Greater than 12.4 acres
  - Less than 12.4 acres
- Floodplains**
  - 100
  - 500
- National Wetlands Inventory



This map is for general information only and should not be used for site specific planning. Data was collected from a wide range of local, state, and federal GIS databases "as is." Westchester County assumes no liability to any party for any loss or damage caused by errors or omissions resulting from negligence, accident or any other cause.

**GIS** GEOGRAPHIC INFORMATION SYSTEMS

Westchester County Board of Legislators  
Andrew J. Span, Westchester County Executive



# Natural Resource Inventory

## Town of Yorktown

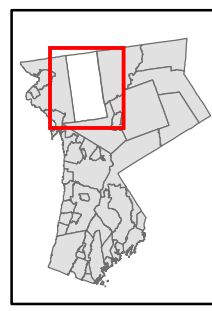
Map # D06

TILE INDEX

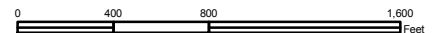
C05	C06	C07	C08	C09	C10	C11
D05	D06	D07	D08	D09	D10	D11
E05	E06	E07	E08	E09	E10	E11
F05	F06	F07	F08	F09	F10	F11
G05	G06	G07	G08	G09	G10	G11

### Legend

- 10' TOPO
- 50' TOPO
- Streams
- Lakes, Ponds or Reservoirs
- Aquifer
- Drainage Divides
- Hydric Soils
- Municipal Boundaries
- Tax Parcels
- Buildings
- Slope 15% - 25%
- Slope 25% and Over
- National Wetlands Inventory
- NYSDEC Wetlands Greater than 12.4 acres
- NYSDEC Wetlands Less than 12.4 acres
- Floodplains 100
- Floodplains 500



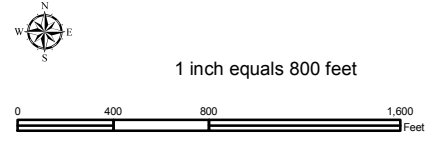
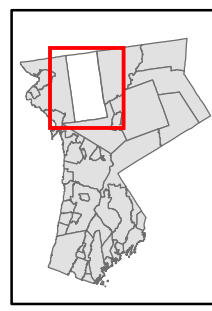
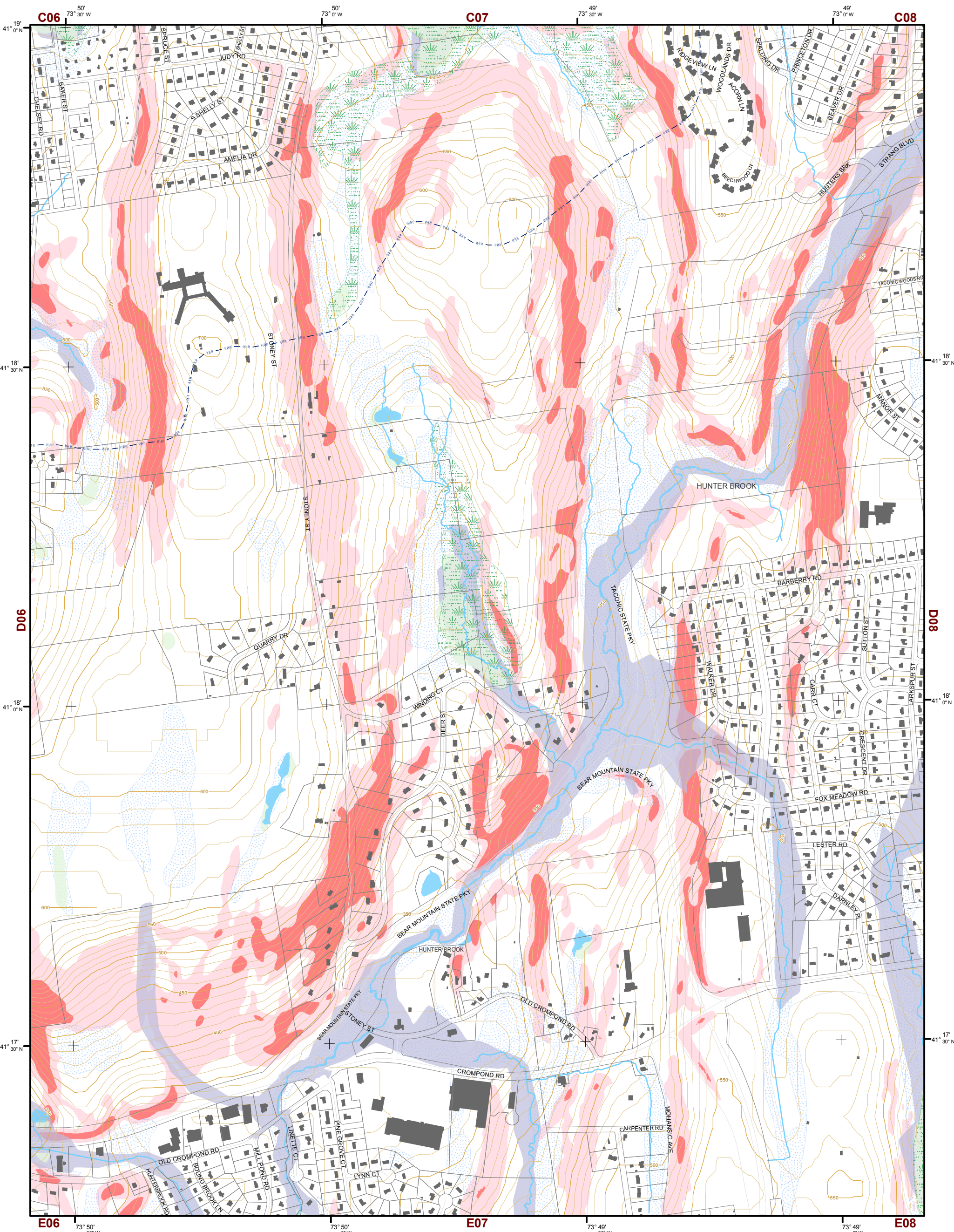
1 inch equals 800 feet



This map is for general information only and should not be used for site specific planning. Data was collected from a wide range of local, state, and federal GIS databases "as is." Westchester County assumes no liability to any party for any loss or damage caused by errors or omissions resulting from negligence, accident or any other cause.



Westchester County Board of Legislators  
Andrew J. Span, Westchester County Executive



# Natural Resource Inventory

## Town of Yorktown

Map # D07

### Legend

- 10' TOPO
- 50' TOPO
- Streams
- Lakes, Ponds or Reservoirs
- Aquifer
- Drainage Divides
- Hyric Soils
- Municipal Boundaries
- Tax Parcels
- Buildings
- Slope**
- 15% - 25%
- 25% and Over
- National Wetlands Inventory

- NYSDEC Wetlands**
- Greater than 12.4 acres
- Less than 12.4 acres
- Floodplains**
- 100
- 500

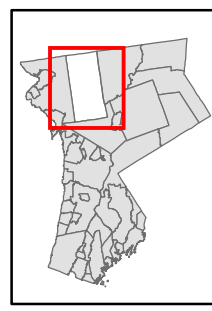
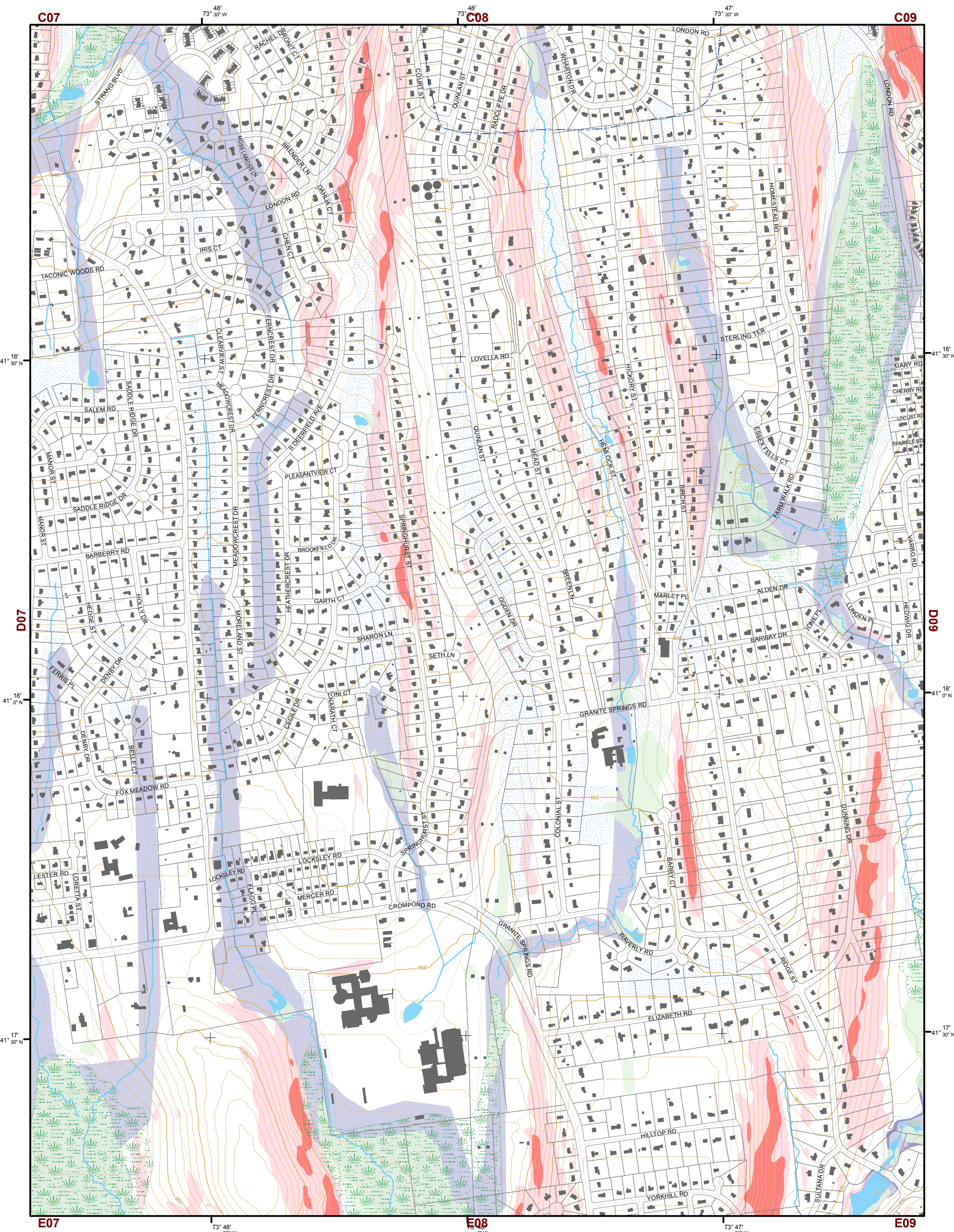
### TILE INDEX

C05	C06	C07	C08	C09	C10	C11
D05	D06	D07	D08	D09	D10	D11
E05	E06	E07	E08	E09	E10	E11
F05	F06	F07	F08	F09	F10	F11
G05	G06	G07	G08	G09	G10	G11

This map is for general information only and should not be used for site specific planning. Data was collected from a wide range of local, state, and federal GIS databases "as is." Westchester County assumes no liability to any party for any loss or damage caused by errors or omissions resulting from negligence, accident or any other cause.



Westchester County Board of Legislators  
Andrew J. Span, Westchester County Executive



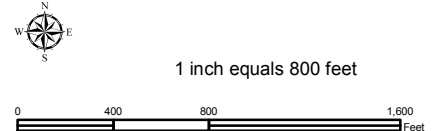
# Natural Resource Inventory

## Town of Yorktown

Map # D08

TILE INDEX

C05	C06	C07	C08	C09	C10	C11
D05	D06	D07	D08	D09	D10	D11
E05	E06	E07	E08	E09	E10	E11
F05	F06	F07	F08	F09	F10	F11
G05	G06	G07	G08	G09	G10	G11



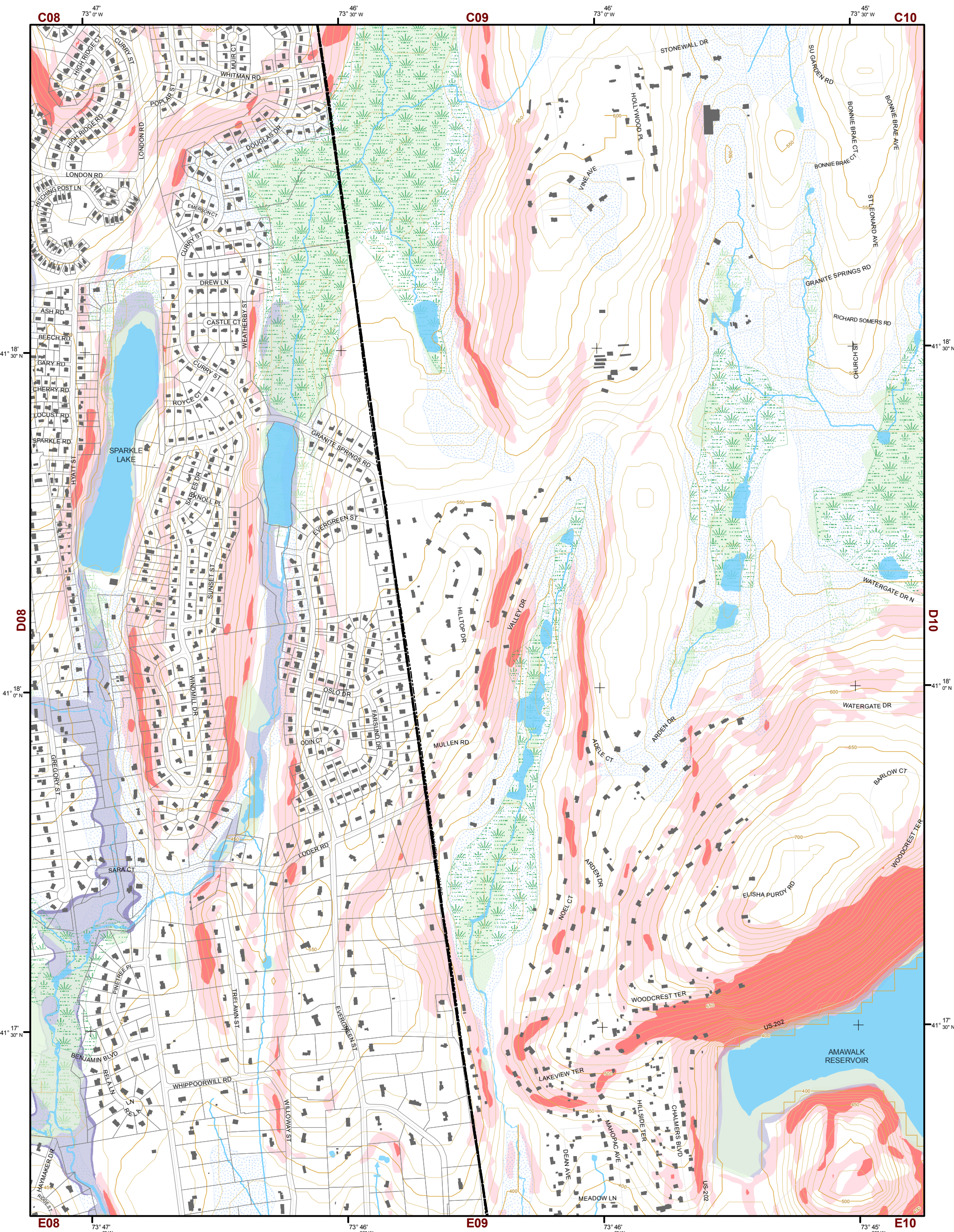
### Legend

- 10' TOPO
- 50' TOPO
- Streams
- Lakes, Ponds or Reservoirs
- Aquifer
- Drainage Divides
- Hydric Soils
- Municipal Boundaries
- Tax Parcels
- Buildings
- Slope 15% - 25%
- Slope 25% and Over
- National Wetlands Inventory
- NYSDEC Wetlands Greater than 12.4 acres
- NYSDEC Wetlands Less than 12.4 acres
- Floodplains 100
- Floodplains 500

This map is for general information only and should not be used for site specific planning. Data was collected from a wide range of local, state, and federal GIS databases "as is." Westchester County assumes no liability to any party for any loss or damage caused by errors or omissions resulting from negligence, accident or any other cause.



Westchester County Board of Legislators  
Andrew J. Span, Westchester County Executive



# Natural Resource Inventory Map # D09

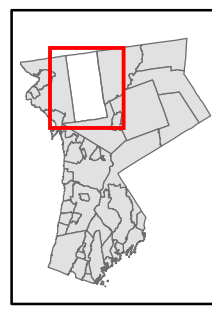
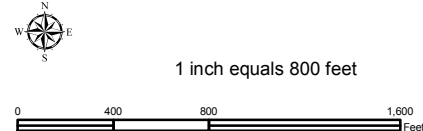
## Town of Yorktown

### TILE INDEX

C05	C06	C07	C08	C09	C10	C11
D05	D06	D07	D08	D09	D10	D11
E05	E06	E07	E08	E09	E10	E11
F05	F06	F07	F08	F09	F10	F11
G05	G06	G07	G08	G09	G10	G11

### Legend

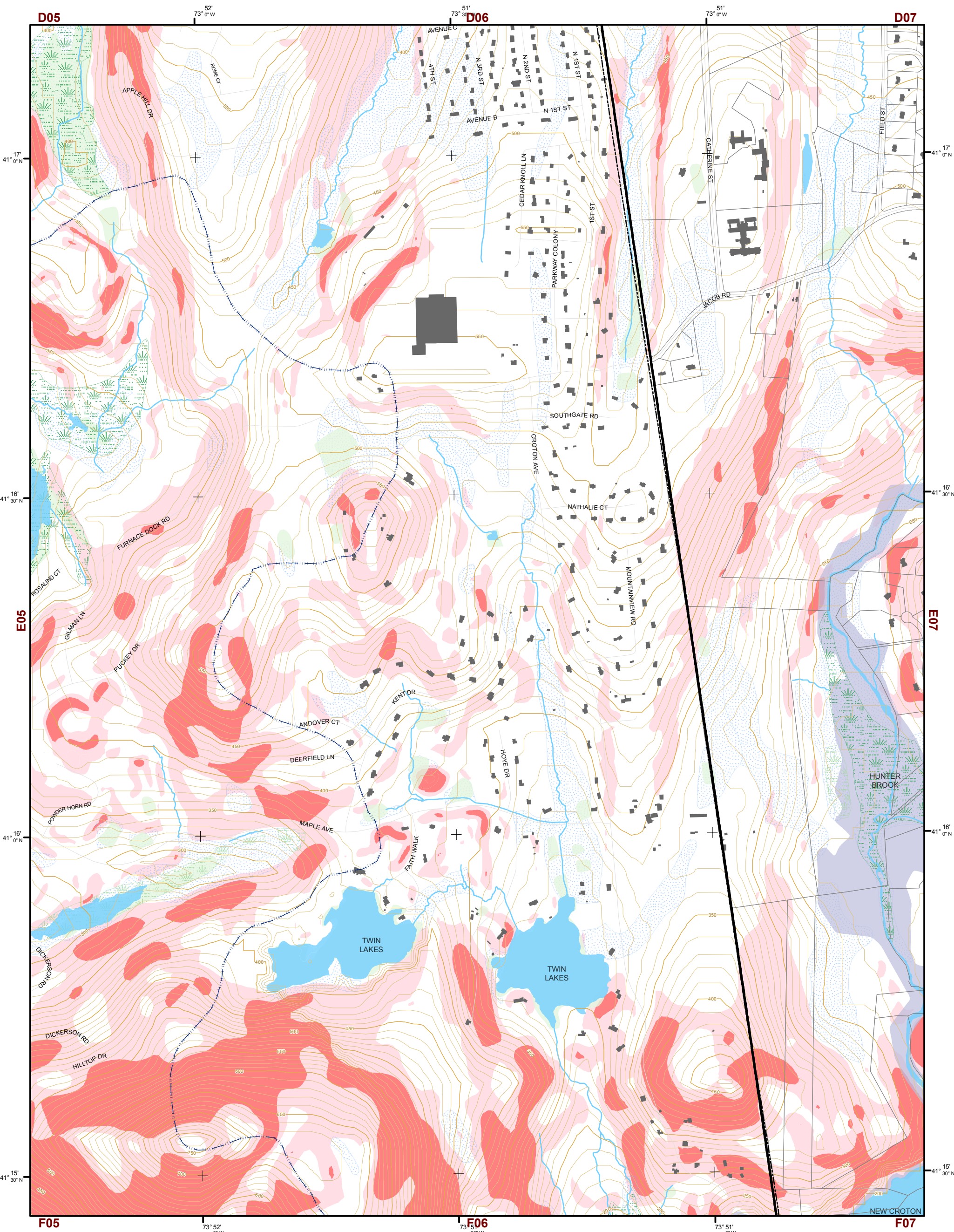
- 10' TOPO
- 50' TOPO
- Streams
- Lakes, Ponds or Reservoirs
- Aquifer
- Drainage Divides
- Hydric Soils
- Municipal Boundaries
- Tax Parcels
- Buildings
- Slope 15% - 25%
- Slope 25% and Over
- National Wetlands Inventory
- NYSDEC Wetlands Greater than 12.4 acres
- NYSDEC Wetlands Less than 12.4 acres
- Floodplains 100
- Floodplains 500



This map is for general information only and should not be used for site specific planning. Data was collected from a wide range of local, state, and federal GIS databases "as is." Westchester County assumes no liability to any party for any loss or damage caused by errors or omissions resulting from negligence, accident or any other cause.





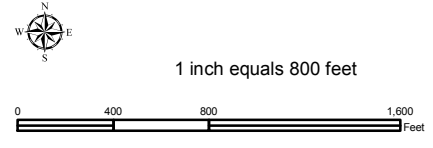
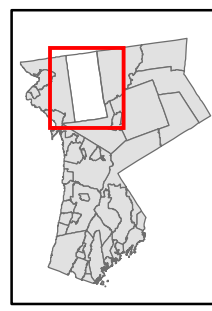


# Natural Resource Inventory

## Town of Yorktown

Map # E06

TILE INDEX



**Legend**

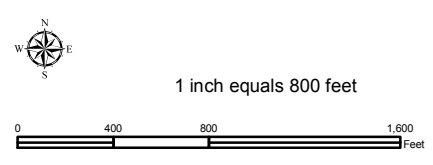
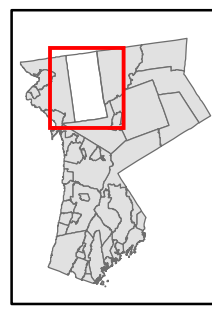
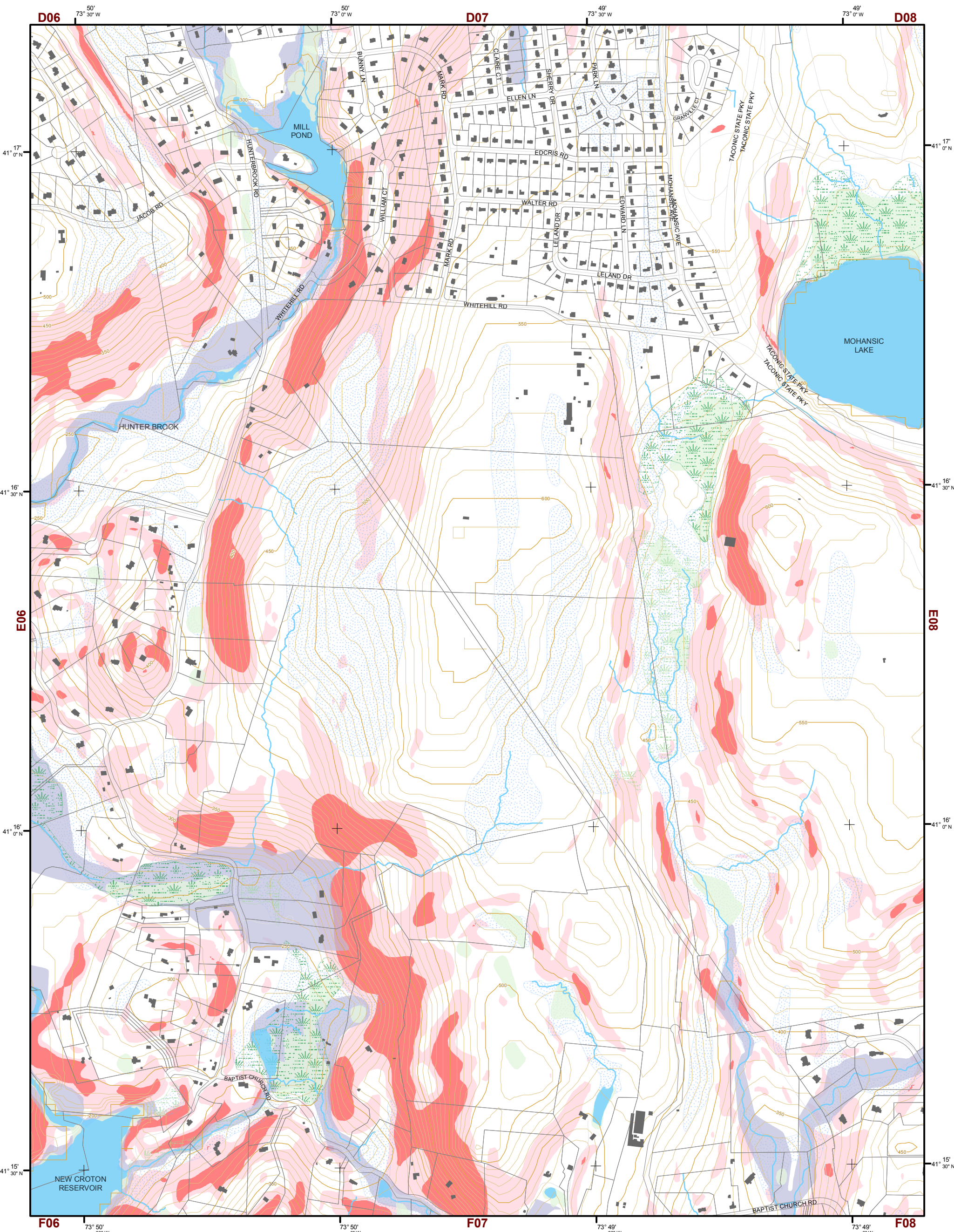
- 10' TOPO
- 50' TOPO
- Streams
- Lakes, Ponds or Reservoirs
- Aquifer
- Drainage Divides
- Hydric Soils
- Municipal Boundaries
- Tax Parcels
- Buildings
- Slope**
- 15% - 25%
- 25% and Over
- National Wetlands Inventory
- NYSDEC Wetlands**
- Greater than 12.4 acres
- Less than 12.4 acres
- Floodplains**
- 100
- 500

C05	C06	C07	C08	C09	C10	C11
D05	D06	D07	D08	D09	D10	D11
E05	<b>E06</b>	E07	E08	E09	E10	E11
F05	F06	F07	F08	F09	F10	F11
G05	G06	G07	G08	G09	G10	G11

This map is for general information only and should not be used for site specific planning. Data was collected from a wide range of local, state, and federal GIS databases "as is." Westchester County assumes no liability to any party for any loss or damage caused by errors or omissions resulting from negligence, accident or any other cause.



Westchester County Board of Legislators  
Andrew J. Span, Westchester County Executive



# Natural Resource Inventory

## Town of Yorktown

Map # E07

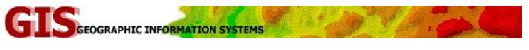
### Legend

- 10' TOPO
- 50' TOPO
- Streams
- Lakes, Ponds or Reservoirs
- Aquifer
- Drainage Divides
- Hydric Soils
- Municipal Boundaries
- Tax Parcels
- Buildings
- Slope**
- 15% - 25%
- 25% and Over
- NYSDEC Wetlands**
- Greater than 12.4 acres
- Less than 12.4 acres
- Floodplains**
- 100
- 500
- National Wetlands Inventory

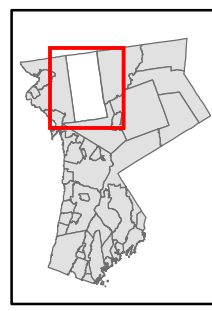
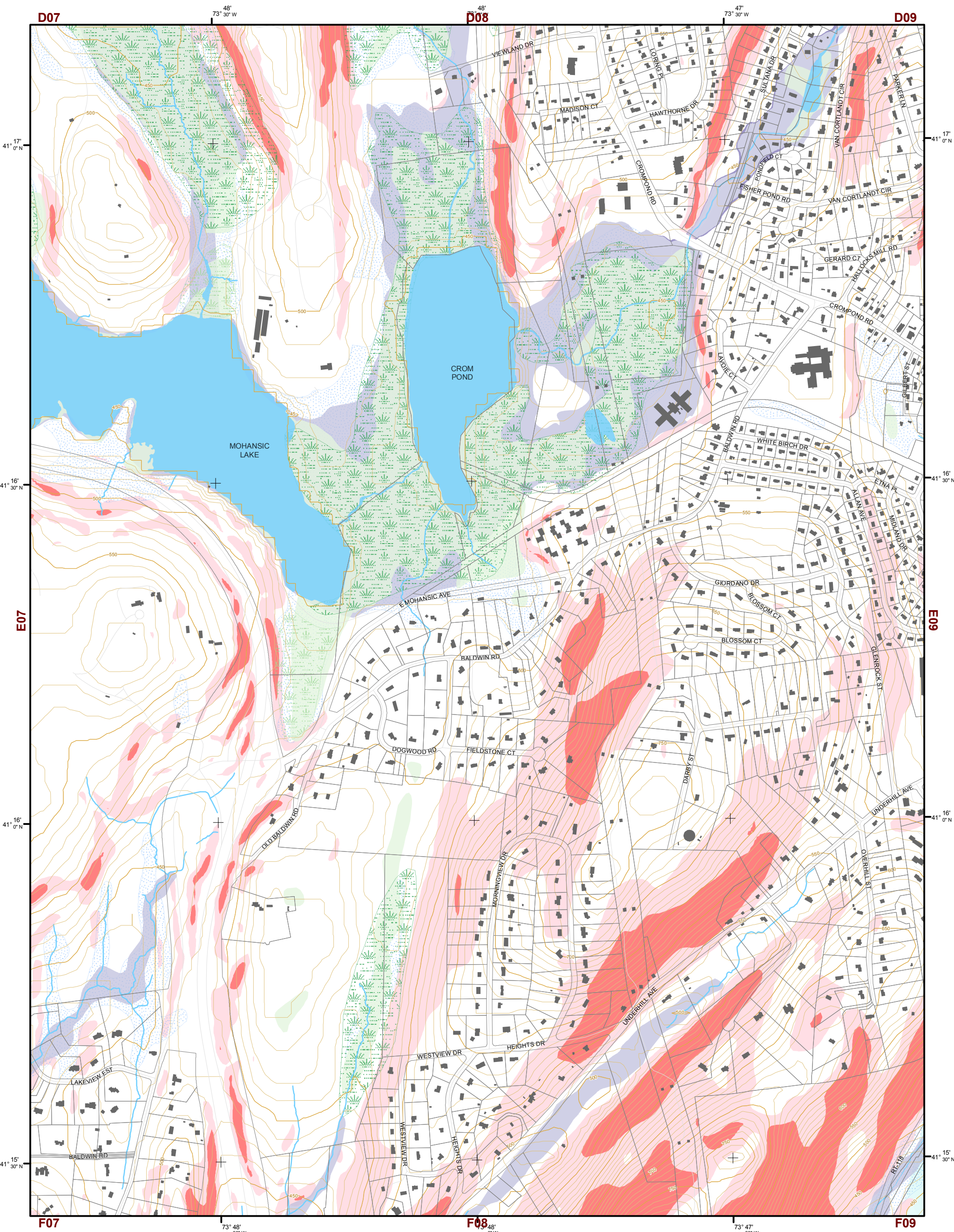
### TILE INDEX

C05	C06	C07	C08	C09	C10	C11
D05	D06	D07	D08	D09	D10	D11
E05	E06	E07	E08	E09	E10	E11
F05	F06	F07	F08	F09	F10	F11
G05	G06	G07	G08	G09	G10	G11

This map is for general information only and should not be used for site specific planning. Data was collected from a wide range of local, state, and federal GIS databases "as is." Westchester County assumes no liability to any party for any loss or damage caused by errors or omissions resulting from negligence, accident or any other cause.



Westchester County  
 Andrew J. Spano, Westchester County Executive  
 County Board of Legislators

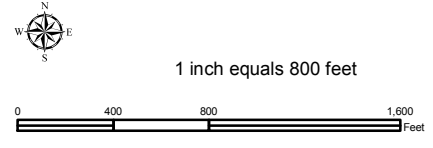


# Natural Resource Inventory

## Town of Yorktown

Map # E08

TILE INDEX



**Legend**

- 10' TOPO
- 50' TOPO
- Streams
- Lakes, Ponds or Reservoirs
- Aquifer
- Drainage Divides
- Hydric Soils
- Municipal Boundaries
- Tax Parcels
- Buildings
- Slope**
- 15% - 25%
- 25% and Over
- National Wetlands Inventory
- NYSDEC Wetlands**
- Greater than 12.4 acres
- Less than 12.4 acres
- Floodplains**
- 100
- 500

C05	C06	C07	C08	C09	C10	C11
D05	D06	D07	D08	D09	D10	D11
E05	E06	E07	E08	E09	E10	E11
F05	F06	F07	F08	F09	F10	F11
G05	G06	G07	G08	G09	G10	G11

This map is for general information only and should not be used for site specific planning. Data was collected from a wide range of local, state, and federal GIS databases "as is." Westchester County assumes no liability to any party for any loss or damage caused by errors or omissions resulting from negligence, accident or any other cause.



Westchester County Board of Legislators  
Andrew J. Span, Westchester County Executive



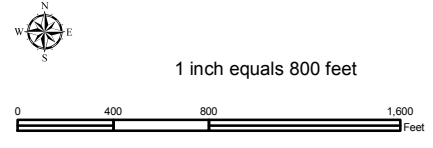
# Natural Resource Inventory

## Town of Yorktown

Map # E09

### TILE INDEX

C05	C06	C07	C08	C09	C10	C11
D05	D06	D07	D08	D09	D10	D11
E05	E06	E07	E08	E09	E10	E11
F05	F06	F07	F08	F09	F10	F11
G05	G06	G07	G08	G09	G10	G11



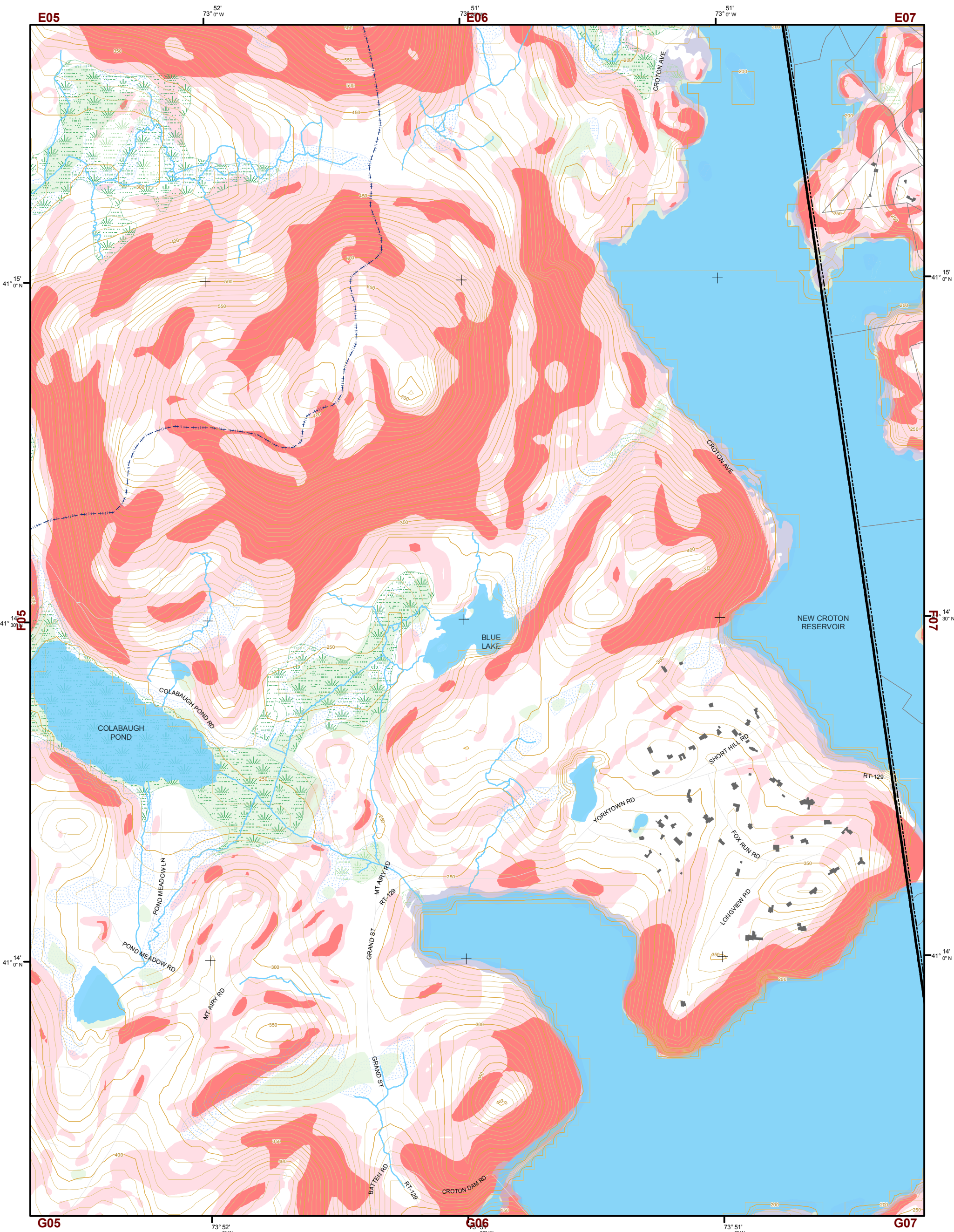
### Legend

- 10' TOPO
- 50' TOPO
- Streams
- Lakes, Ponds or Reservoirs
- Aquifer
- Drainage Divides
- Hydric Soils
- Municipal Boundaries
- Tax Parcels
- Buildings
- Slope 15% - 25%
- Slope 25% and Over
- NYSDEC Wetlands Greater than 12.4 acres
- NYSDEC Wetlands Less than 12.4 acres
- Floodplains 100
- Floodplains 500
- National Wetlands Inventory

This map is for general information only and should not be used for site specific planning. Data was collected from a wide range of local, state, and federal GIS databases "as is." Westchester County assumes no liability to any party for any loss or damage caused by errors or omissions resulting from negligence, accident or any other cause.

**GIS** GEOGRAPHIC INFORMATION SYSTEMS

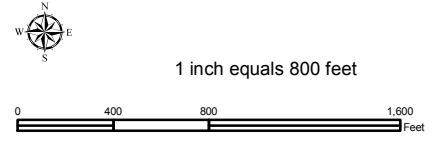
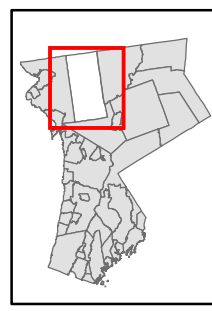
Westchester County Board of Legislators  
Andrew J. Span, Westchester County Executive



# Natural Resource Inventory

## Town of Yorktown

Map # F06



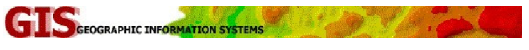
### Legend

- 10' TOPO
- 50' TOPO
- Streams
- Lakes, Ponds or Reservoirs
- Aquifer
- Drainage Divides
- Hydric Soils
- Municipal Boundaries
- Tax Parcels
- Buildings
- Slope**
  - 15% - 25%
  - 25% and Over
- NYSDEC Wetlands**
  - Greater than 12.4 acres
  - Less than 12.4 acres
- Floodplains**
  - 100
  - 500
- National Wetlands Inventory

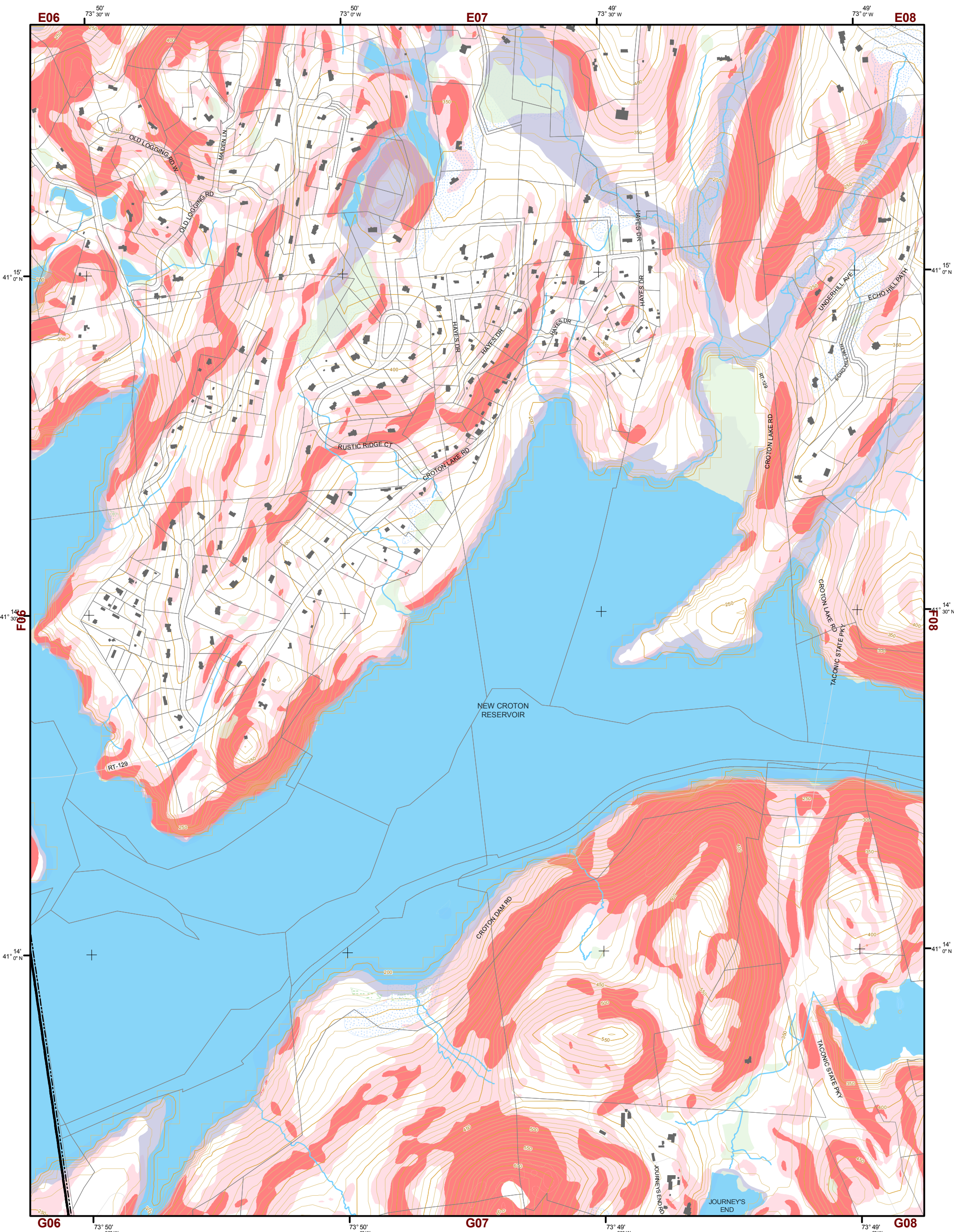
### TILE INDEX

C05	C06	C07	C08	C09	C10	C11
D05	D06	D07	D08	D09	D10	D11
E05	E06	E07	E08	E09	E10	E11
F05	<b>F06</b>	F07	F08	F09	F10	F11
G05	G06	G07	G08	G09	G10	G11

This map is for general information only and should not be used for site specific planning. Data was collected from a wide range of local, state, and federal GIS databases "as is." Westchester County assumes no liability to any party for any loss or damage caused by errors or omissions resulting from negligence, accident or any other cause.



Westchester County  
 Andrew J. Span, Westchester County Executive  
 County Board of Legislators

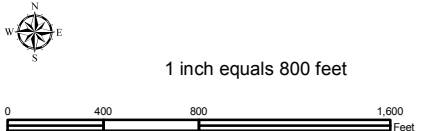
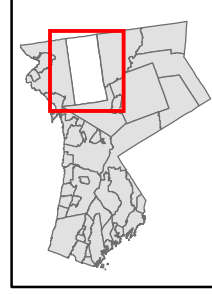


# Natural Resource Inventory

## Town of Yorktown

Map # F07

TILE INDEX



**Legend**

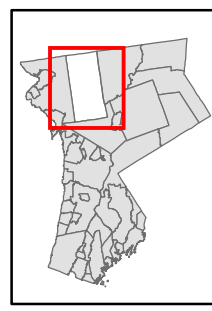
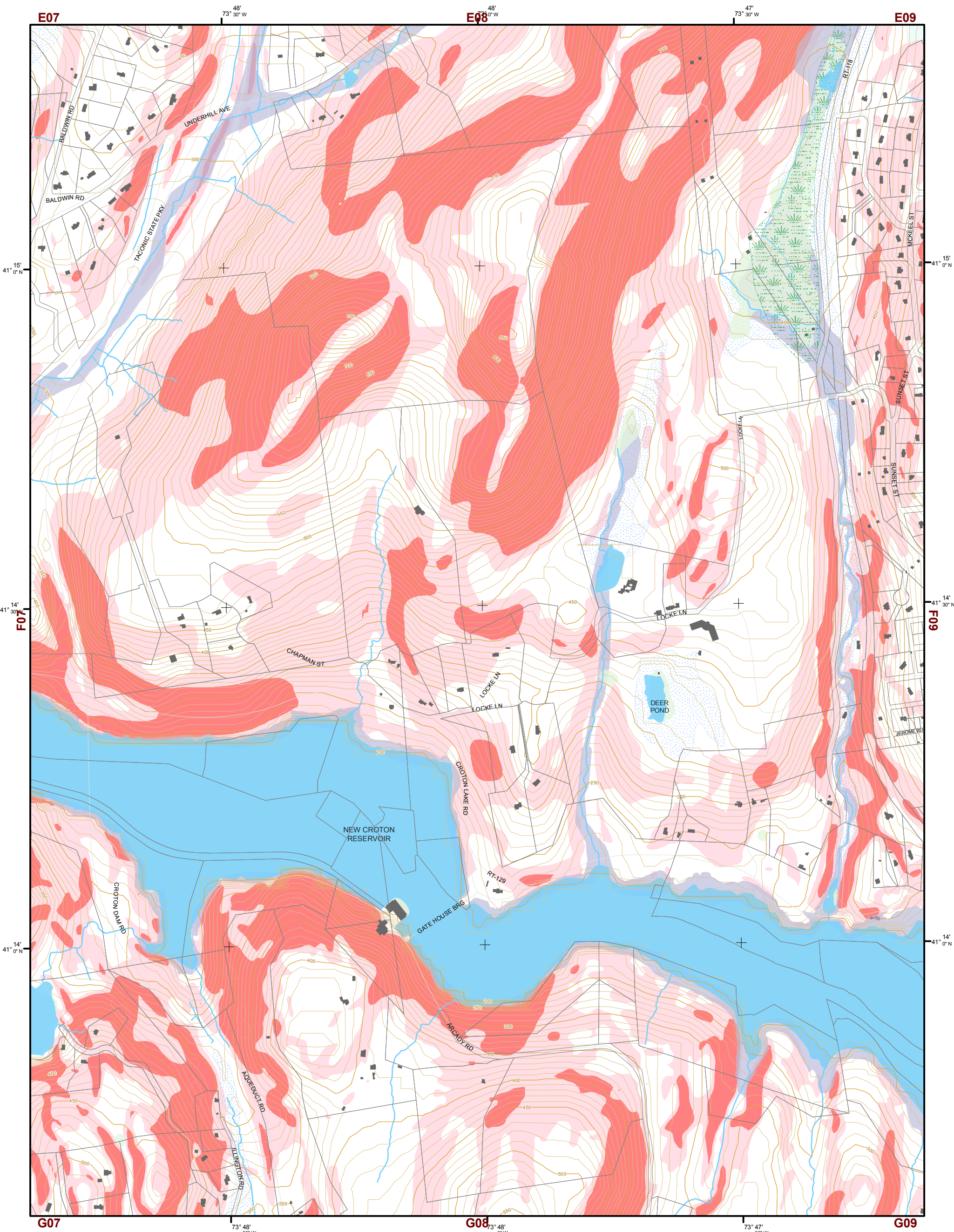
- 10' TOPO
- 50' TOPO
- Streams
- Lakes, Ponds or Reservoirs
- Aquifer
- Drainage Divides
- Hydric Soils
- Municipal Boundaries
- Tax Parcels
- Buildings
- Slope**
  - 15% - 25%
  - 25% and Over
- NYSDEC Wetlands**
  - Greater than 12.4 acres
  - Less than 12.4 acres
- Floodplains**
  - 100
  - 500
- National Wetlands Inventory

C05	C06	C07	C08	C09	C10	C11
D05	D06	D07	D08	D09	D10	D11
E05	E06	E07	E08	E09	E10	E11
F05	F06	F07	F08	F09	F10	F11
G05	G06	G07	G08	G09	G10	G11

This map is for general information only and should not be used for site specific planning. Data was collected from a wide range of local, state, and federal GIS databases "as is." Westchester County assumes no liability to any party for any loss or damage caused by errors or omissions resulting from negligence, accident or any other cause.

**GIS** GEOGRAPHIC INFORMATION SYSTEMS

Westchester County Board of Legislators  
Andrew J. Span, Westchester County Executive

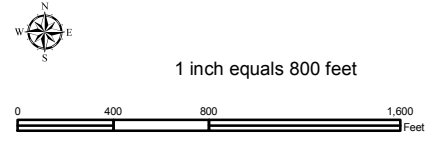


# Natural Resource Inventory

## Town of Yorktown

Map # F08

TILE INDEX



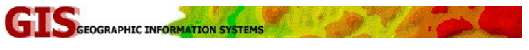
**Legend**

- 10' TOPO
- 50' TOPO
- Streams
- Lakes, Ponds or Reservoirs
- Aquifer
- Drainage Divides
- Hydric Soils
- Municipal Boundaries
- Tax Parcels
- Buildings
- Slope**
  - 15% - 25%
  - 25% and Over
- National Wetlands Inventory

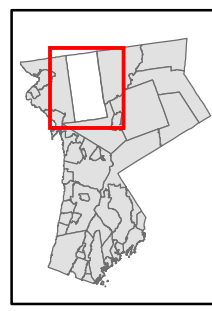
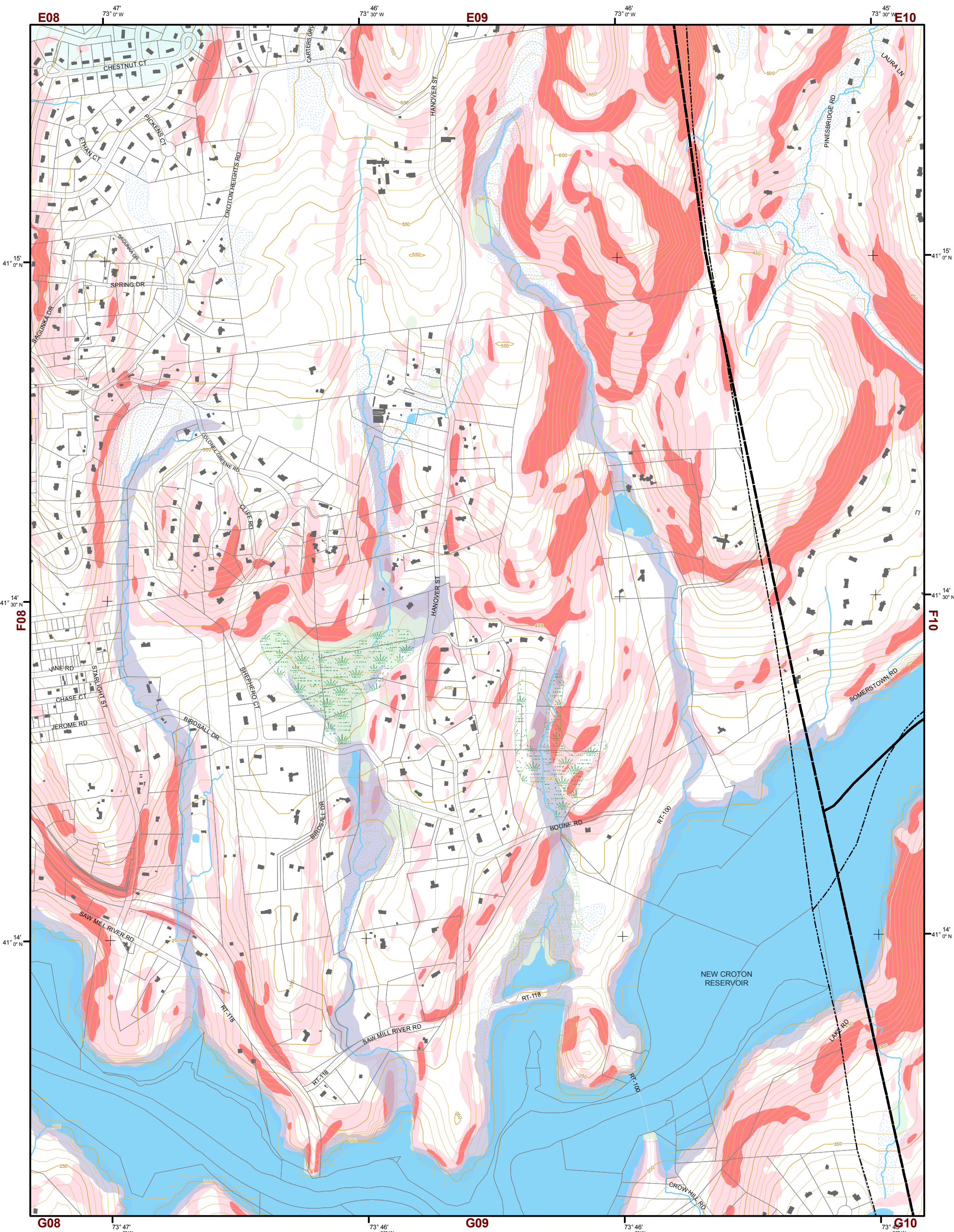
- NYSDEC Wetlands**
  - Greater than 12.4 acres
  - Less than 12.4 acres
- Floodplains**
  - 100
  - 500

C05	C06	C07	C08	C09	C10	C11
D05	D06	D07	D08	D09	D10	D11
E05	E06	E07	E08	E09	E10	E11
F05	F06	F07	F08	F09	F10	F11
G05	G06	G07	G08	G09	G10	G11

This map is for general information only and should not be used for site specific planning. Data was collected from a wide range of local, state, and federal GIS databases "as is." Westchester County assumes no liability to any party for any loss or damage caused by errors or omissions resulting from negligence, accident or any other cause.



Westchester County Board of Legislators  
Andrew J. Span, Westchester County Executive

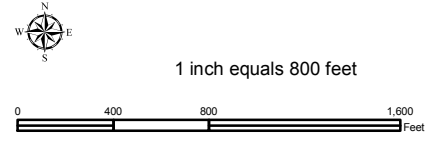


# Natural Resource Inventory

## Town of Yorktown

Map # F09

TILE INDEX



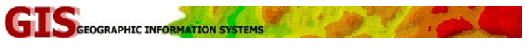
### Legend

- 10' TOPO
- 50' TOPO
- Streams
- Lakes, Ponds or Reservoirs
- Aquifer
- Drainage Divides
- Hydric Soils
- Municipal Boundaries
- Tax Parcels
- Buildings
- Slope**
  - 15% - 25%
  - 25% and Over
- NYSDEC Wetlands**
  - Greater than 12.4 acres
  - Less than 12.4 acres
- Floodplains**
  - 100
  - 500
- National Wetlands Inventory

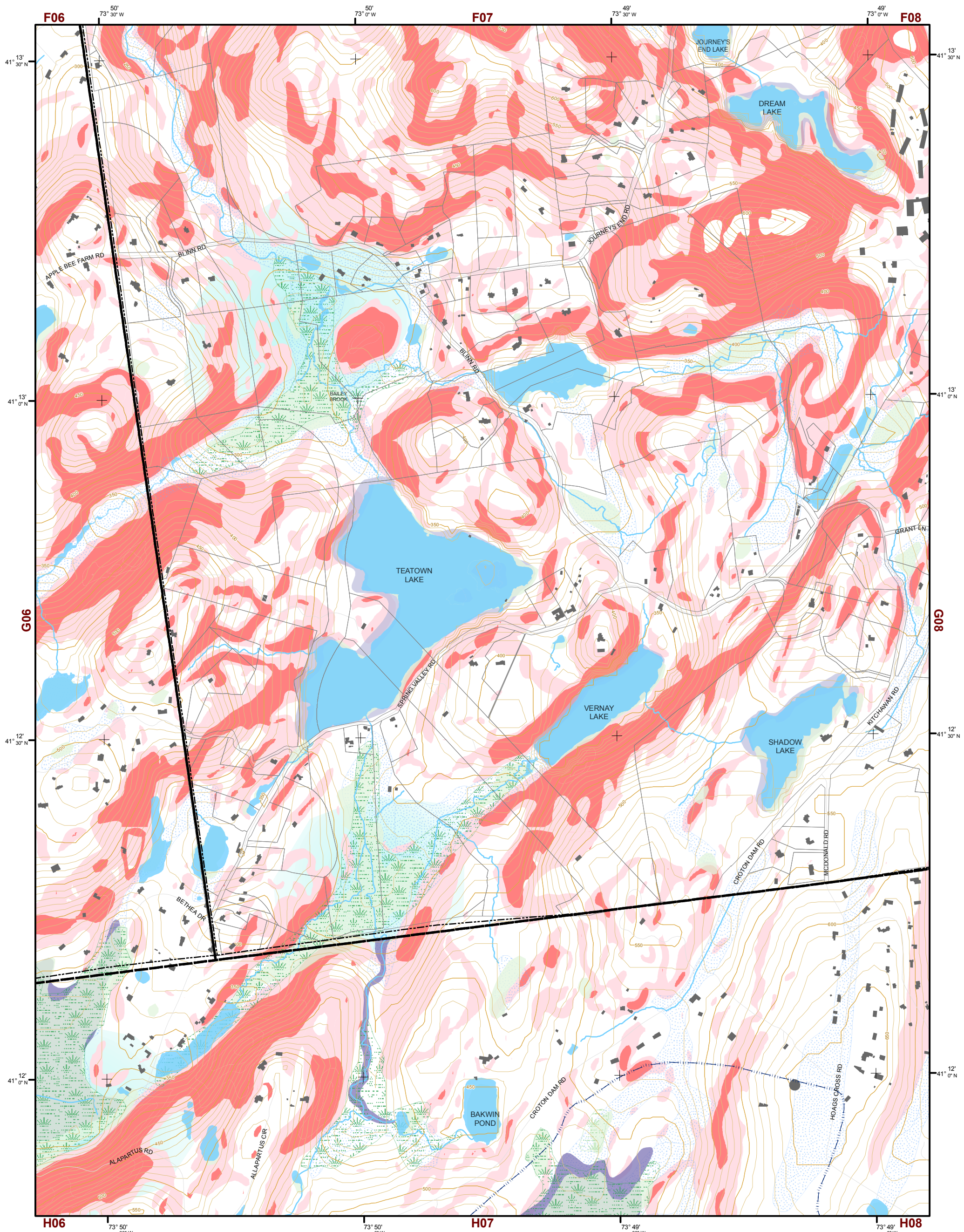
C05	C06	C07	C08	C09	C10	C11
D05	D06	D07	D08	D09	D10	D11
E05	E06	E07	E08	E09	E10	E11
F05	F06	F07	F08	F09	F10	F11
G05	G06	G07	G08	G09	G10	G11

This map is for general information only and should not be used for site specific planning. Data was collected from a wide range of local, state, and federal GIS databases "as is." Westchester County assumes no liability to any party for any loss or damage caused by errors or omissions resulting from negligence, accident or any other cause.

Westchester County Board of Legislators  
 Andrew J. Span, Westchester County Executive





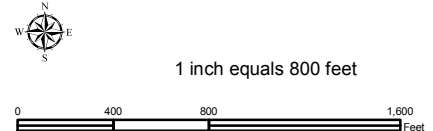
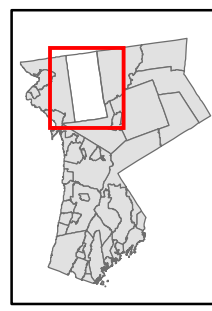


# Natural Resource Inventory

## Town of Yorktown

Map # G07

TILE INDEX



### Legend

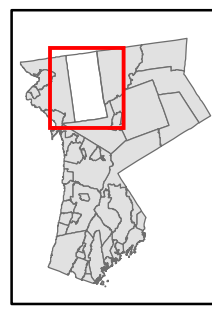
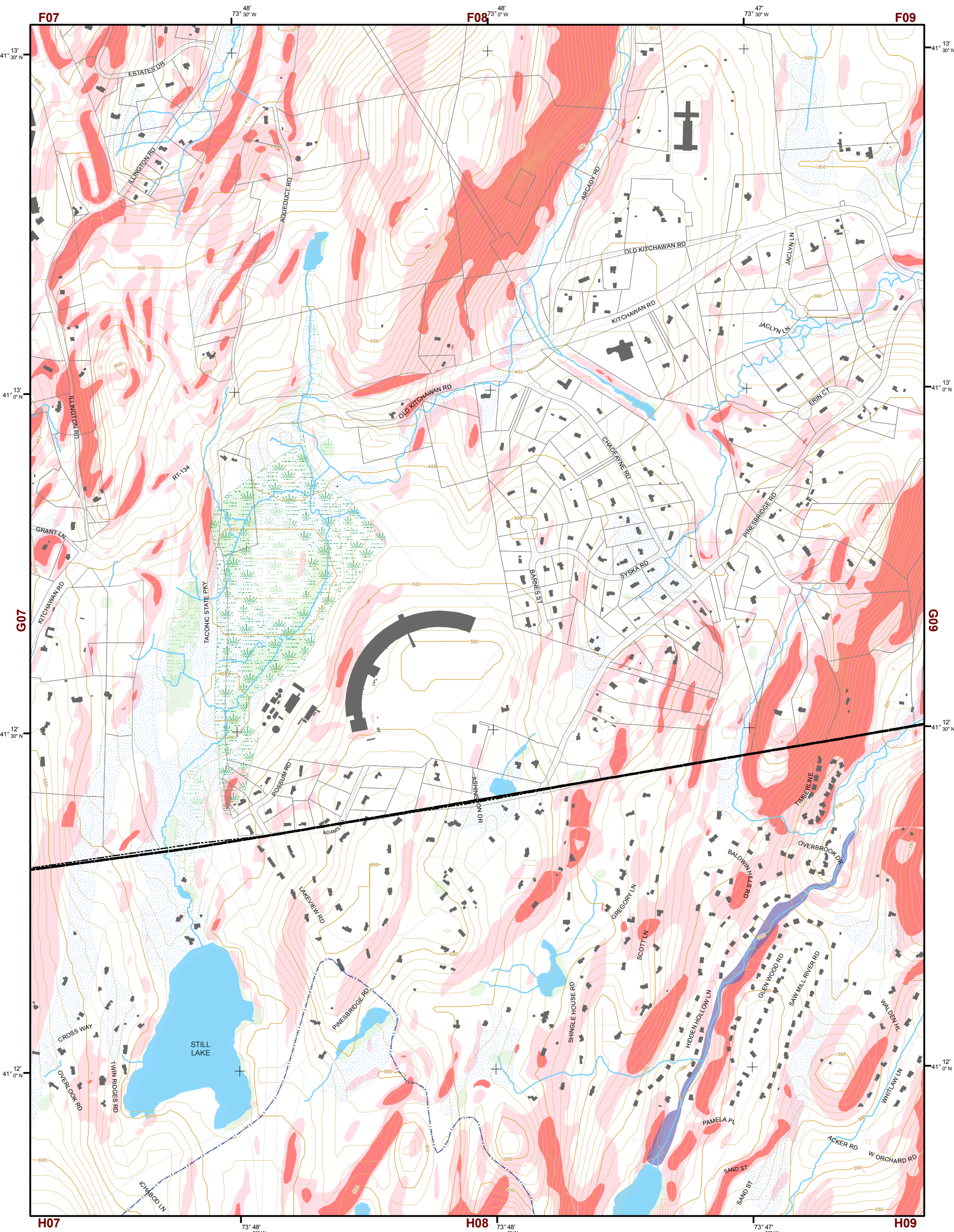
- 10' TOPO
- 50' TOPO
- Streams
- Lakes, Ponds or Reservoirs
- Aquifer
- Drainage Divides
- Hydric Soils
- Municipal Boundaries
- Tax Parcels
- Buildings
- Slope**
  - 15% - 25%
  - 25% and Over
- NYSDEC Wetlands**
  - Greater than 12.4 acres
  - Less than 12.4 acres
- Floodplains**
  - 100
  - 500
- National Wetlands Inventory

C05	C06	C07	C08	C09	C10	C11
D05	D06	D07	D08	D09	D10	D11
E05	E06	E07	E08	E09	E10	E11
F05	F06	F07	F08	F09	F10	F11
G05	G06	G07	G08	G09	G10	G11

This map is for general information only and should not be used for site specific planning. Data was collected from a wide range of local, state, and federal GIS databases "as is." Westchester County assumes no liability to any party for any loss or damage caused by errors or omissions resulting from negligence, accident or any other cause.



Westchester County Board of Legislators  
Andrew J. Span, Westchester County Executive

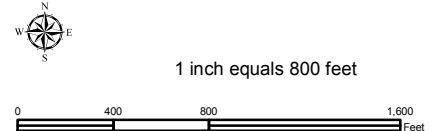


# Natural Resource Inventory

## Town of Yorktown

Map # G08

TILE INDEX



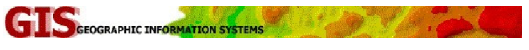
**Legend**

- 10' TOPO
- 50' TOPO
- Streams
- Lakes, Ponds or Reservoirs
- Aquifer
- Drainage Divides
- Hydric Soils
- Municipal Boundaries
- Tax Parcels
- Buildings
- Slope**
- 15% - 25%
- 25% and Over
- National Wetlands Inventory

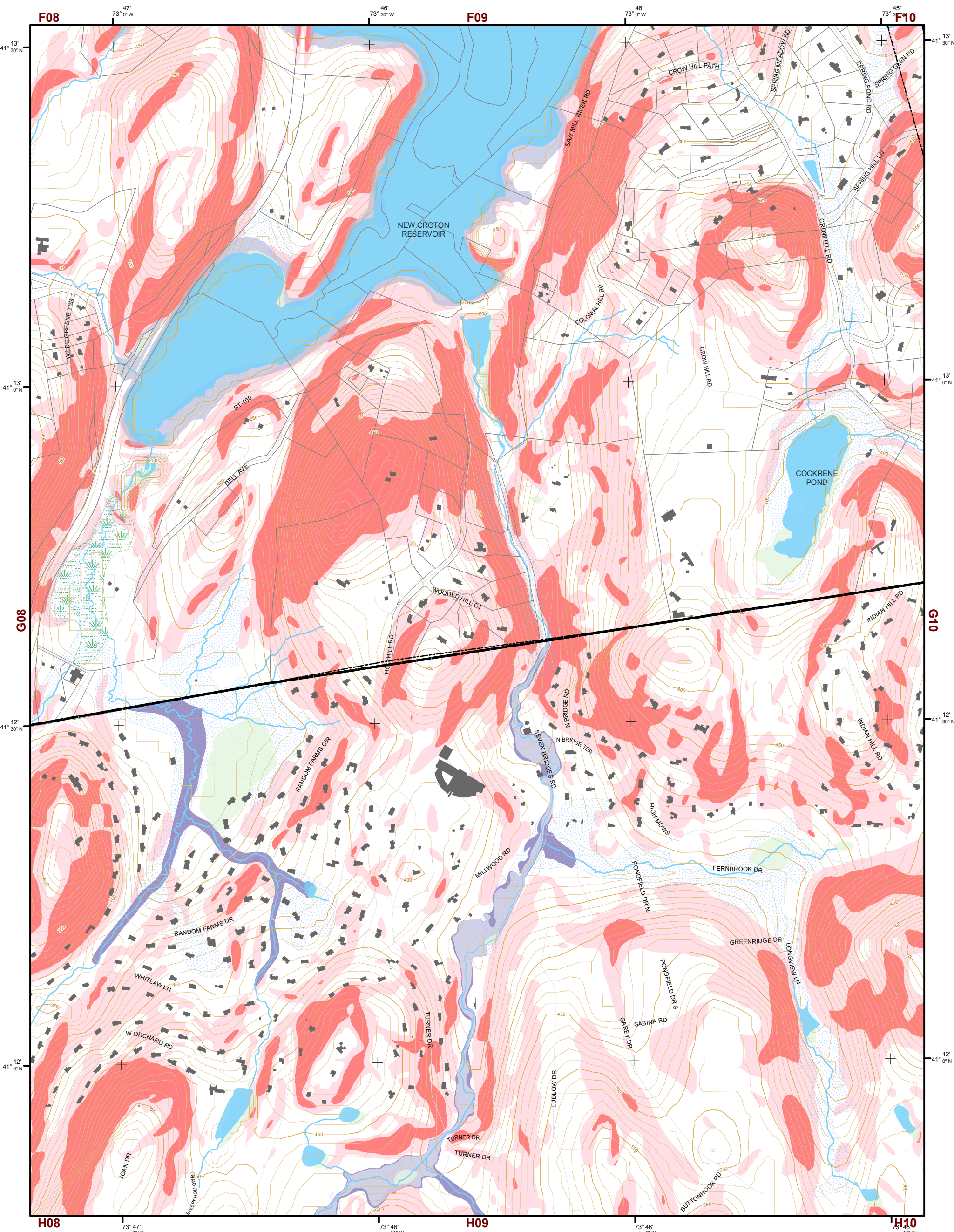
- NYSDEC Wetlands**
- Greater than 12.4 acres
- Less than 12.4 acres
- Floodplains**
- 100
- 500

C05	C06	C07	C08	C09	C10	C11
D05	D06	D07	D08	D09	D10	D11
E05	E06	E07	E08	E09	E10	E11
F05	F06	F07	F08	F09	F10	F11
G05	G06	G07	G08	G09	G10	G11

This map is for general information only and should not be used for site specific planning. Data was collected from a wide range of local, state, and federal GIS databases "as is." Westchester County assumes no liability to any party for any loss or damage caused by errors or omissions resulting from negligence, accident or any other cause.



Westchester County Board of Legislators  
Andrew J. Span, Westchester County Executive

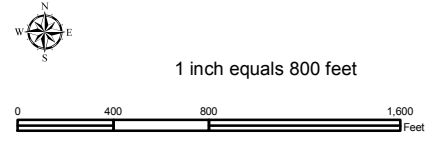
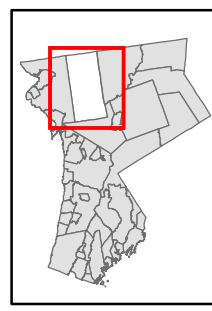


# Natural Resource Inventory

## Town of Yorktown

Map # **G09**

TILE INDEX



### Legend

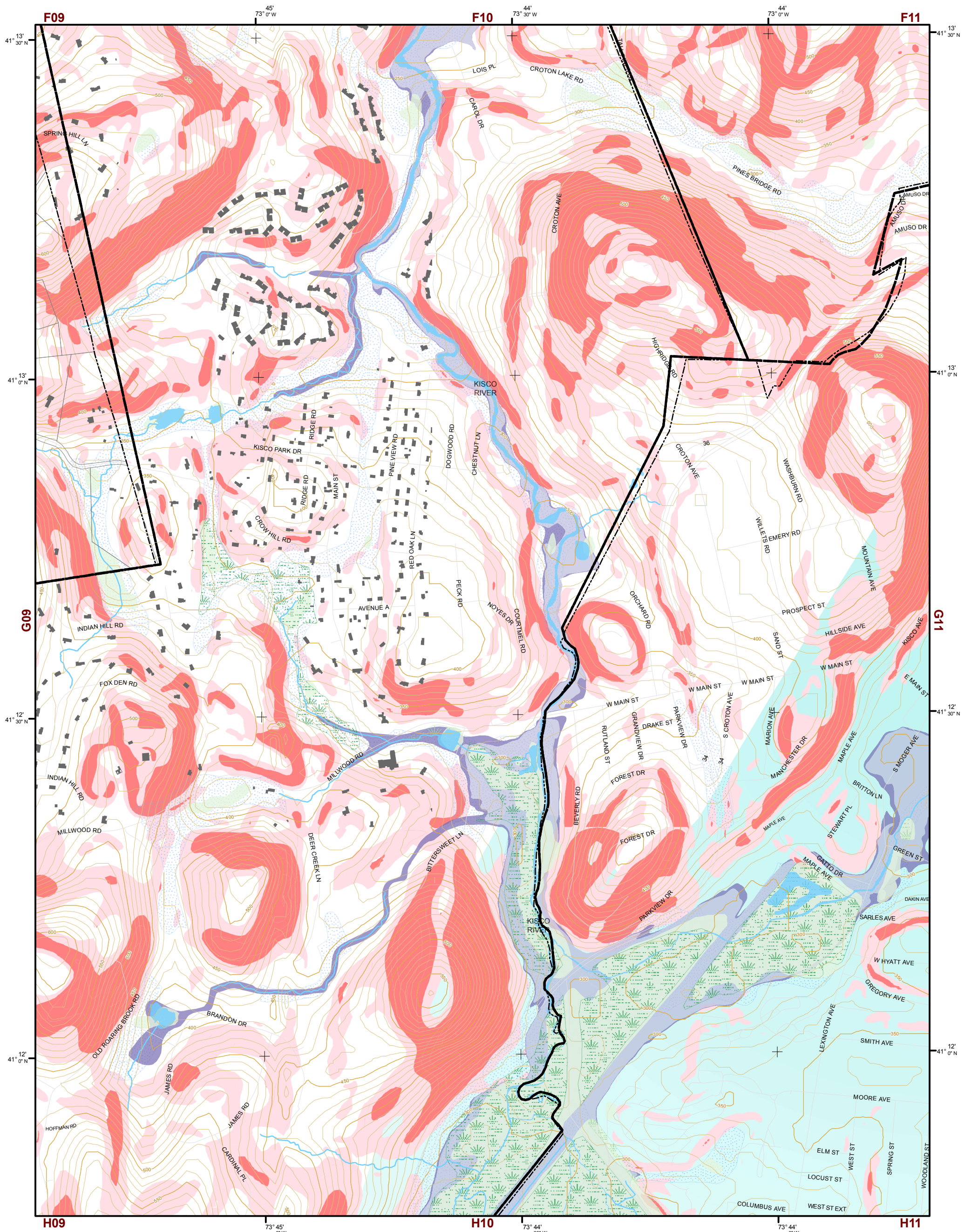
- 10' TOPO
- 50' TOPO
- Streams
- Lakes, Ponds or Reservoirs
- Aquifer
- Drainage Divides
- Hydric Soils
- Municipal Boundaries
- Tax Parcels
- Buildings
- Slope**
- 15% - 25%
- 25% and Over
- NYSDEC Wetlands**
- Greater than 12.4 acres
- Less than 12.4 acres
- Floodplains**
- 100
- 500
- National Wetlands Inventory

C05	C06	C07	C08	C09	C10	C11
D05	D06	D07	D08	D09	D10	D11
E05	E06	E07	E08	E09	E10	E11
F05	F06	F07	F08	F09	F10	F11
G05	G06	G07	G08	G09	G10	G11

This map is for general information only and should not be used for site specific planning. Data was collected from a wide range of local, state, and federal GIS databases "as is." Westchester County assumes no liability to any party for any loss or damage caused by errors or omissions resulting from negligence, accident or any other cause.

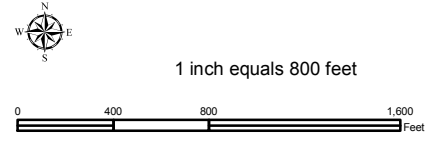
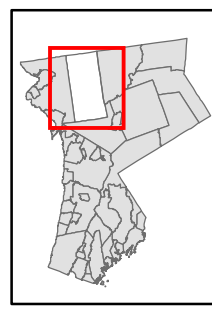


Westchester County Board of Legislators  
 Andrew J. Span, Westchester County Executive



# Natural Resource Inventory Map # G10

## Town of Yorktown



### Legend

- 10' TOPO
- 50' TOPO
- Streams
- Lakes, Ponds or Reservoirs
- Aquifer
- Drainage Divides
- Hydric Soils
- Municipal Boundaries
- Tax Parcels
- Buildings
- Slope**
- 15% - 25%
- 25% and Over
- National Wetlands Inventory
- NYSDEC Wetlands**
- Greater than 12.4 acres
- Less than 12.4 acres
- Floodplains**
- 100
- 500

### TILE INDEX

C05	C06	C07	C08	C09	C10	C11
D05	D06	D07	D08	D09	D10	D11
E05	E06	E07	E08	E09	E10	E11
F05	F06	F07	F08	F09	F10	F11
G05	G06	G07	G08	G09	G10	G11

This map is for general information only and should not be used for site specific planning. Data was collected from a wide range of local, state, and federal GIS databases "as is." Westchester County assumes no liability to any party for any loss or damage caused by errors or omissions resulting from negligence, accident or any other cause.



Westchester County Board of Legislators  
Andrew J. Span, Westchester County Executive