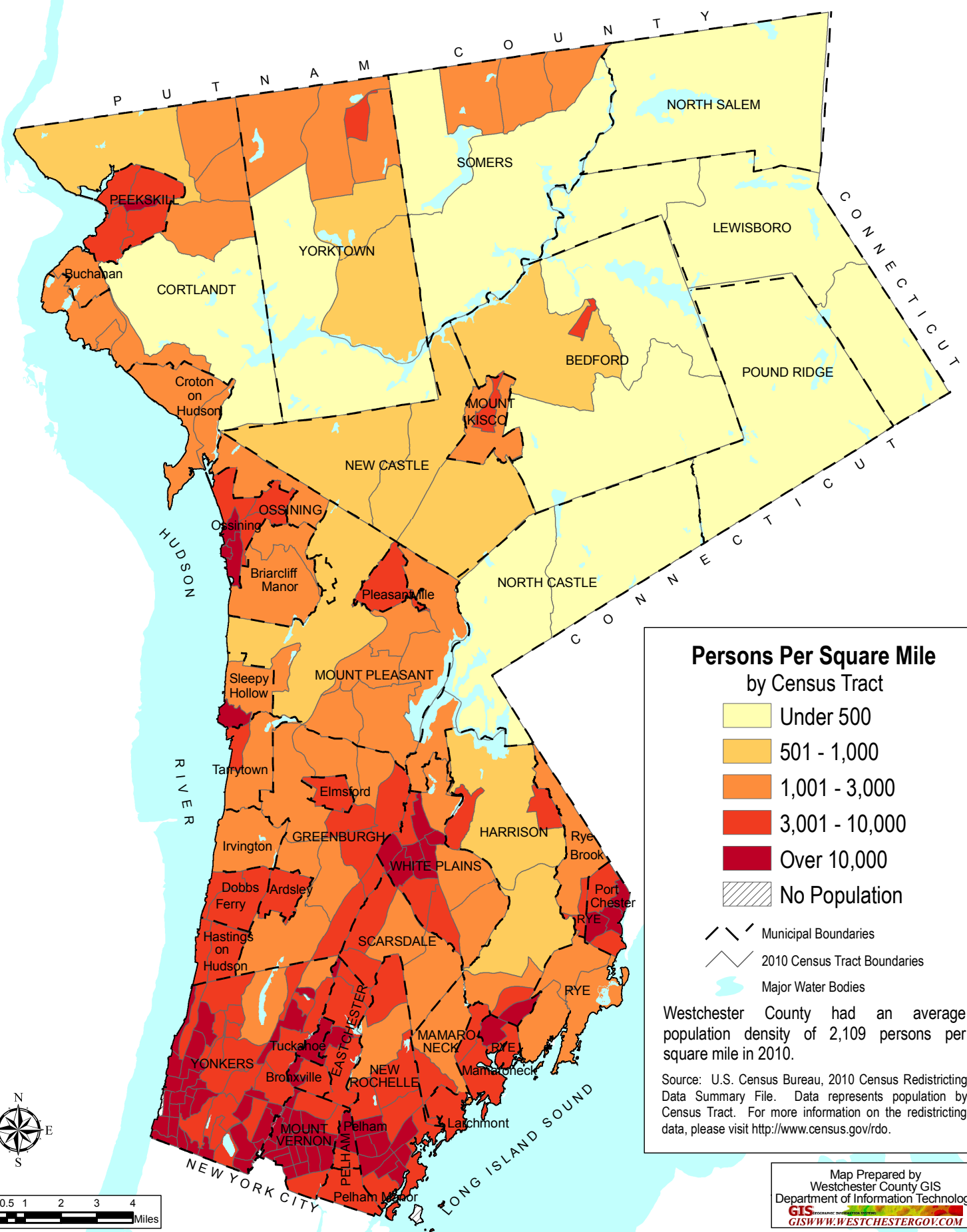
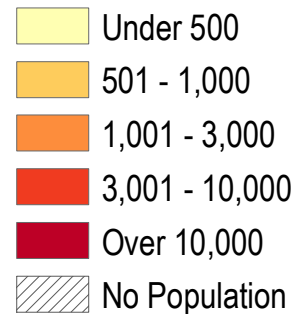


WESTCHESTER COUNTY, NEW YORK



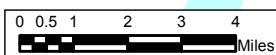
Persons Per Square Mile by Census Tract



- Municipal Boundaries
- 2010 Census Tract Boundaries
- Major Water Bodies

Westchester County had an average population density of 2,109 persons per square mile in 2010.

Source: U.S. Census Bureau, 2010 Census Redistricting Data Summary File. Data represents population by Census Tract. For more information on the redistricting data, please visit <http://www.census.gov/rdo>.



Map Prepared by
Westchester County GIS
Department of Information Technology
GIS
GISWWW.WESTCHESTERGOV.COM

Population Density