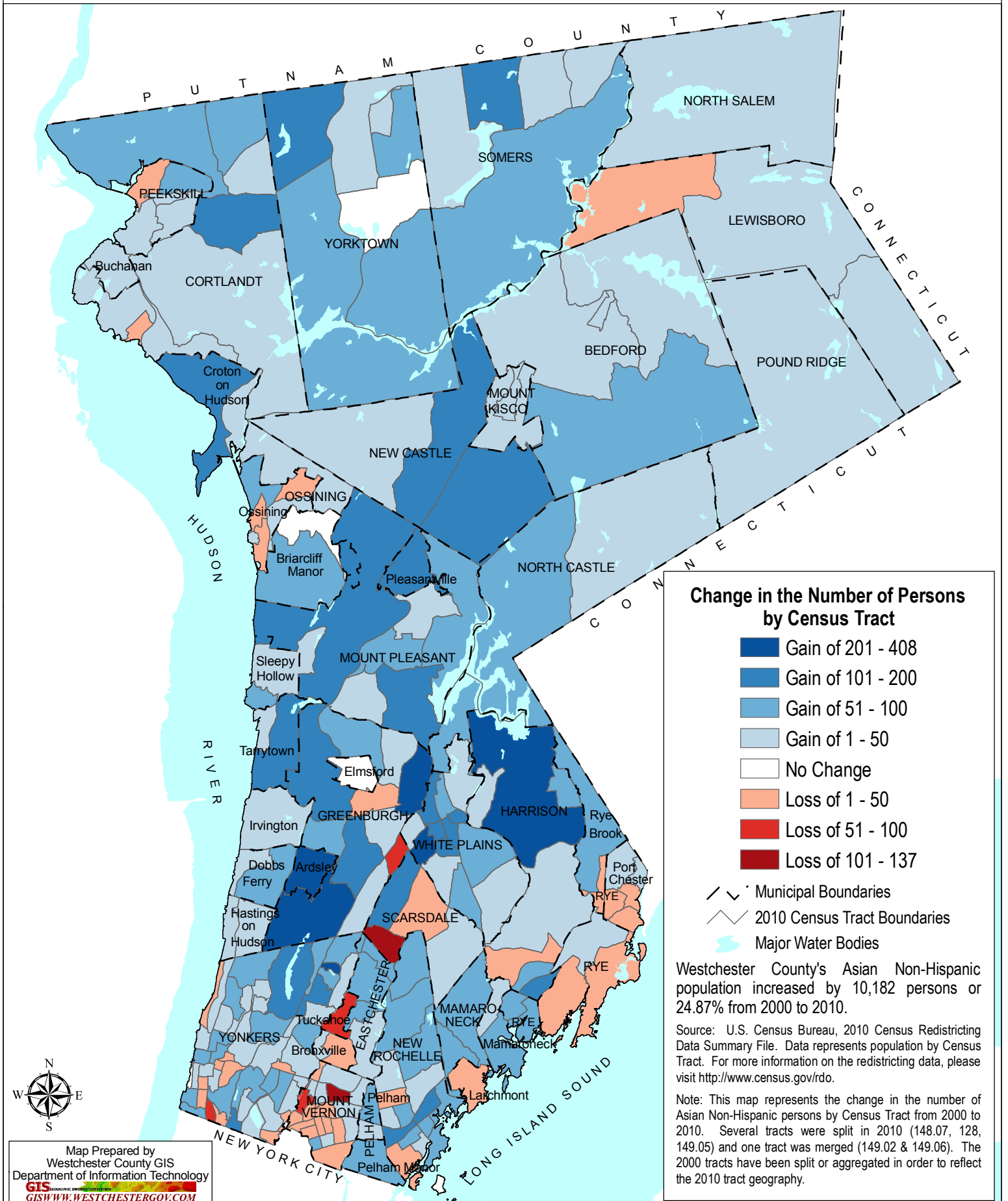


WESTCHESTER COUNTY, NEW YORK



Change in the Number of Persons by Census Tract

- Gain of 201 - 408
- Gain of 101 - 200
- Gain of 51 - 100
- Gain of 1 - 50
- No Change
- Loss of 1 - 50
- Loss of 51 - 100
- Loss of 101 - 137

- Municipal Boundaries
- 2010 Census Tract Boundaries
- Major Water Bodies

Westchester County's Asian Non-Hispanic population increased by 10,182 persons or 24.87% from 2000 to 2010.

Source: U.S. Census Bureau, 2010 Census Redistricting Data Summary File. Data represents population by Census Tract. For more information on the redistricting data, please visit <http://www.census.gov/rdo>.

Note: This map represents the change in the number of Asian Non-Hispanic persons by Census Tract from 2000 to 2010. Several tracts were split in 2010 (148.07, 128, 149.05) and one tract was merged (149.02 & 149.06). The 2000 tracts have been split or aggregated in order to reflect the 2010 tract geography.



Map Prepared by
Westchester County GIS
Department of Information Technology
GIS
GISWWW.WESTCHESTERGOV.COM

Westchester
gov.com
Robert P. Astorino, Westchester County Executive
County Board of Legislators

Change in Asian Population, 2000-2010

214 Michaelian Office Building
148 Martine Avenue
White Plains, New York 10601