

ArcGIS for AutoCAD – Install & Use

Download from <http://www.esri.com/software/arcgis/arcgis-for-autocad/index.html>

Install - once on your pc

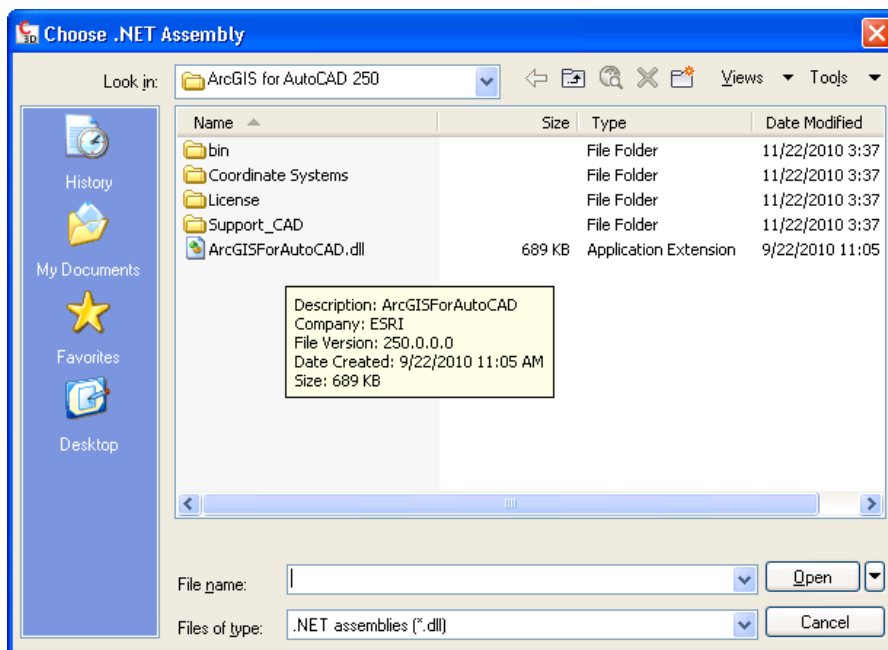
1. Open the folder with the unzipped setup files.
2. Right-click **setup.exe** and click **Run as Administrator**.
3. In the *Welcome to the ArcGIS for AutoCAD 250 Setup* dialog box, click **Next**.
4. Follow installation instructions on the screen.

Load Program in AutoCAD - load at each use*

1. Type “**netload**” into the AutoCAD Command Line and press enter.

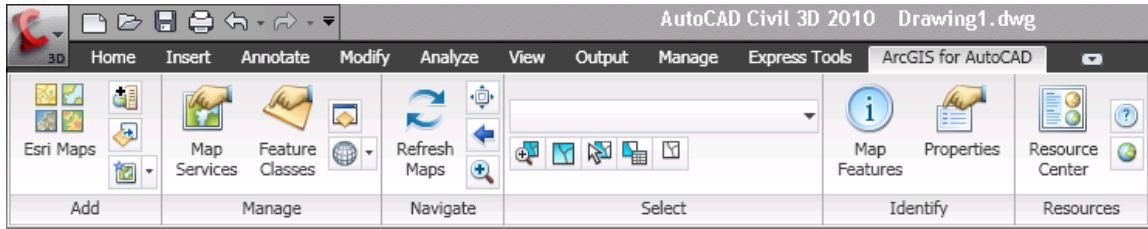


2. In the *Choose .NET Assembly* dialog, browse to locate **ArcGISForAutoCAD.dll** in C:\Program Files\ArcGIS for AutoCAD250



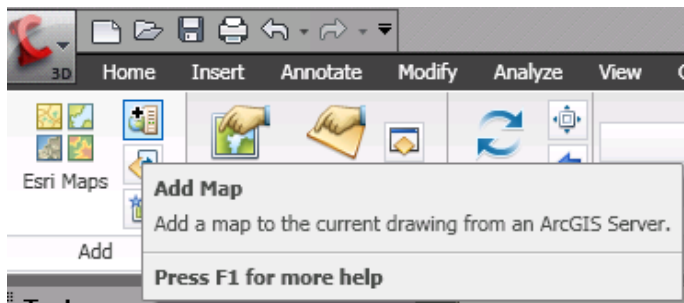
***NOTE:** You'll need to 'netload' the .dll every time AutoCAD is started (repeat steps above). However, the location of the map service and/or ESRI maps will be saved for you.

4. *ArcGIS for AutoCAD* will be located in a ribbon at the top of the screen:



Add a Map Service

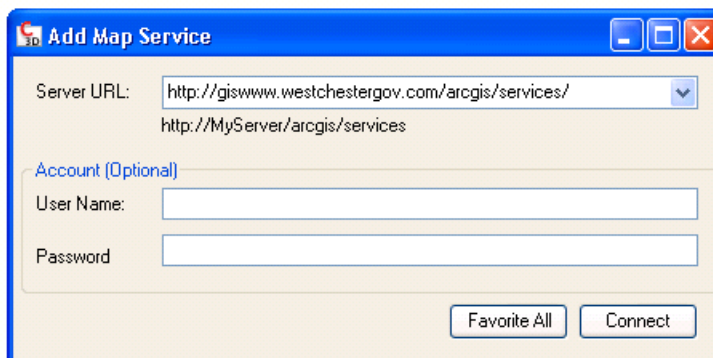
1. Select the **Add Map** button from the *Add* panel in the *ArcGIS for AutoCAD* tab:



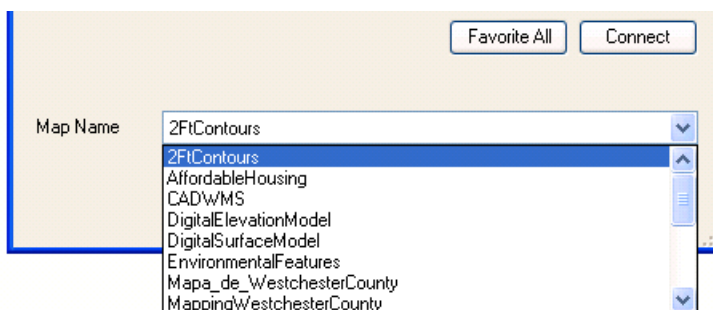
2. In the *Add Map Service* dialog - *Server URL* copy/paste this link:

<http://giswww.westchestergov.com/arcgis/services>

Leave User Name and Password blank and **press Connect** – at every use

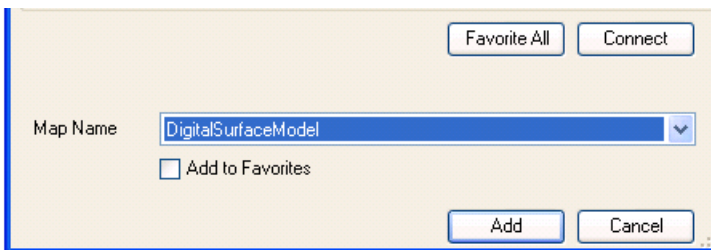
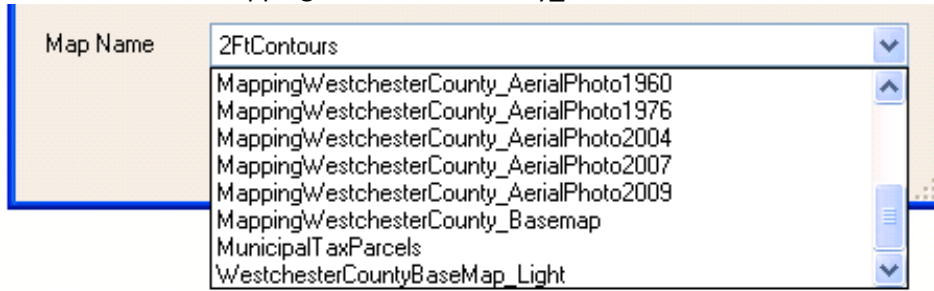


3. For *Map Name*, click the drop-down arrow, select a map - then **Press Add**

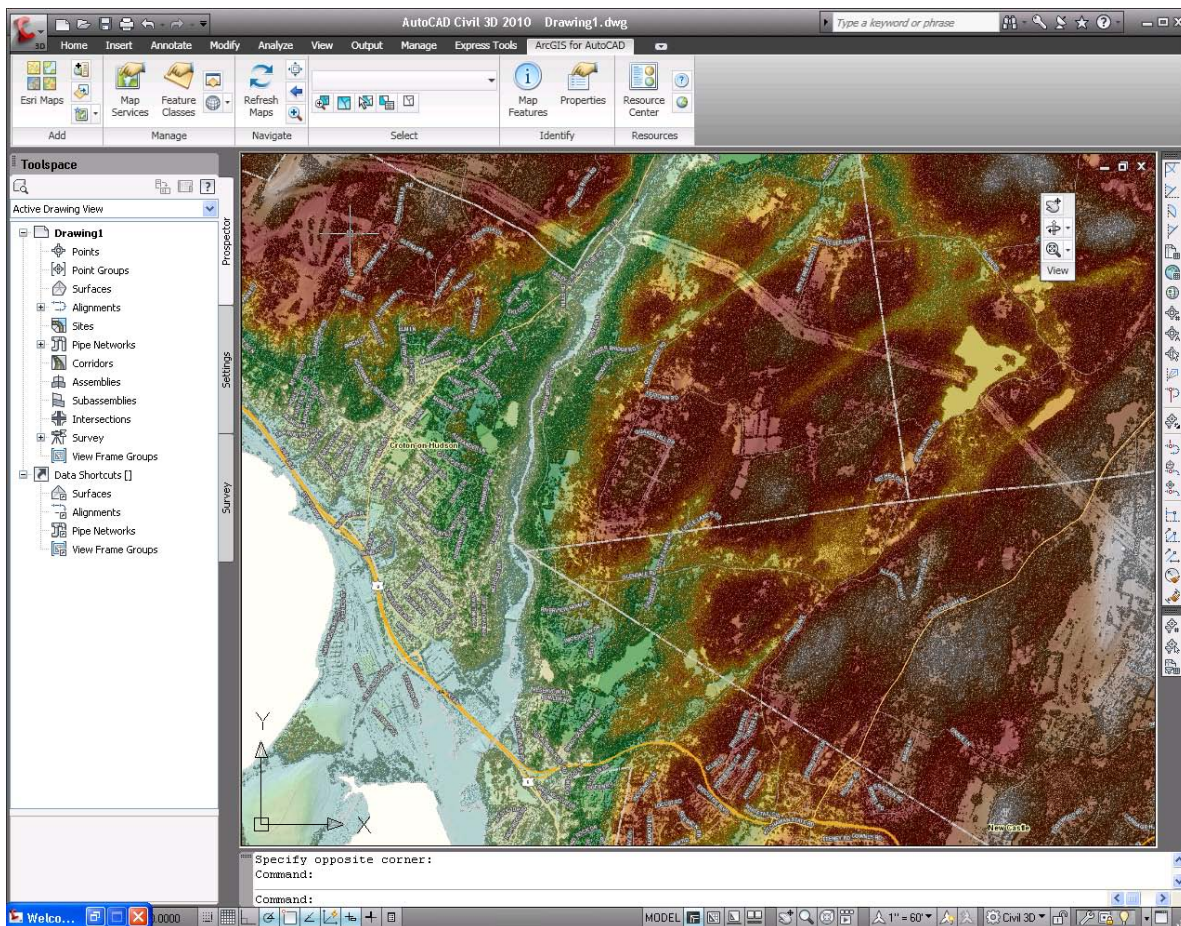


More Map Services:

MappingWestchesterCounty_AerialPhoto1947

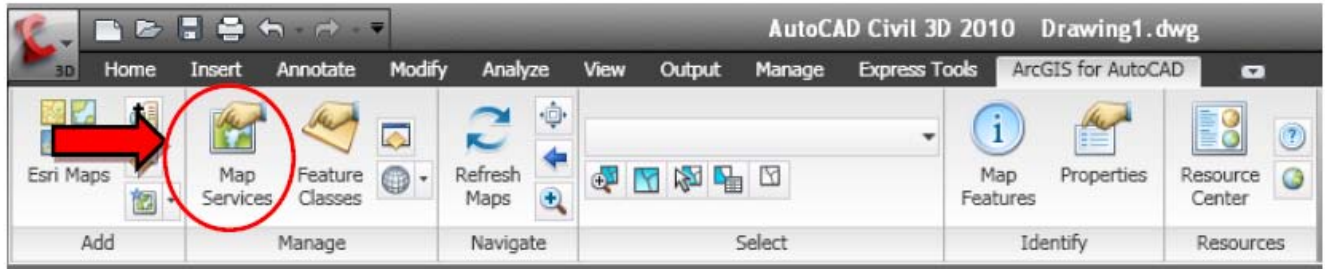


Example – Digital Surface Model:

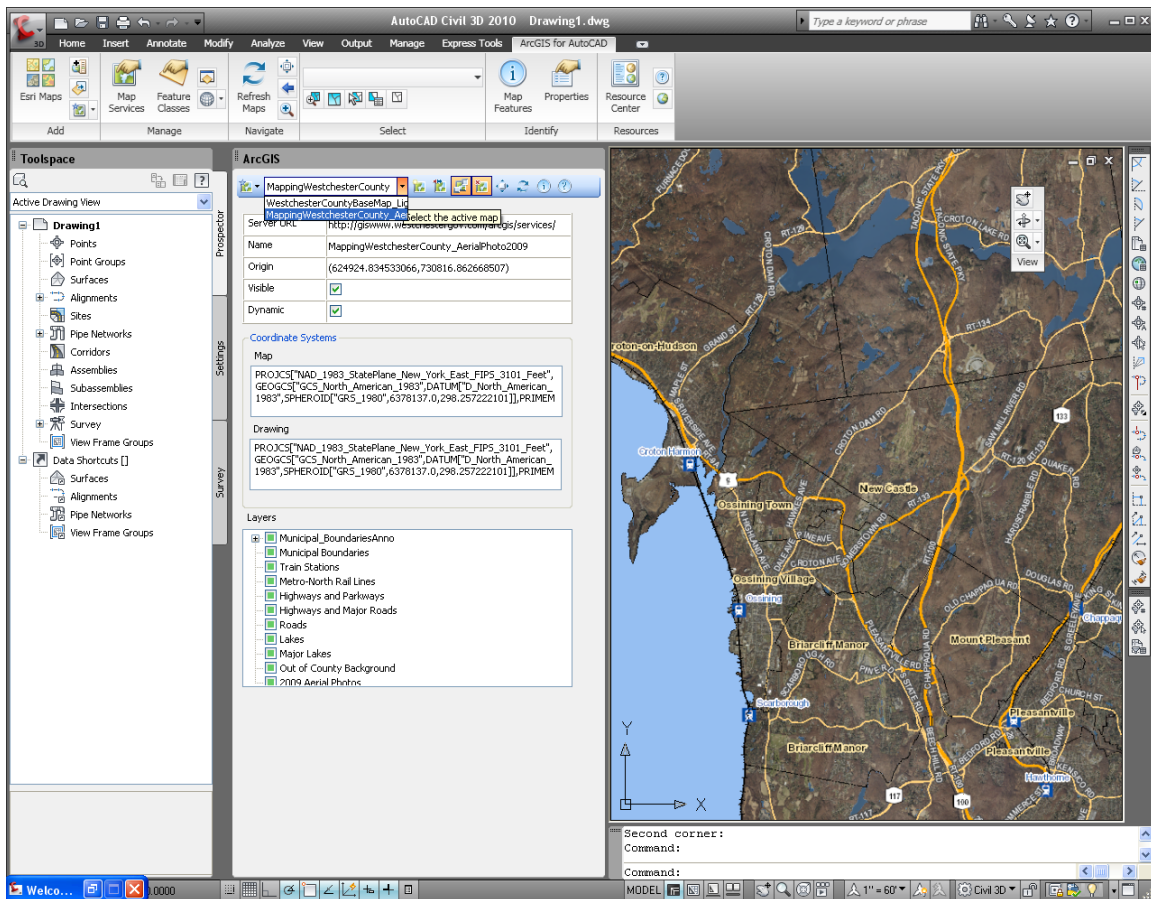


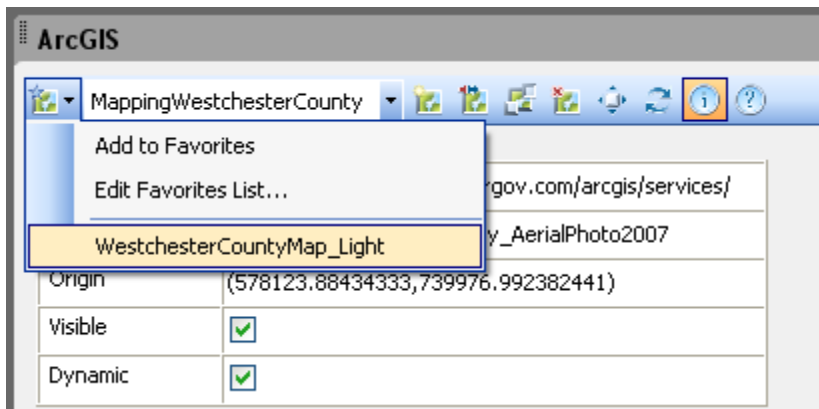
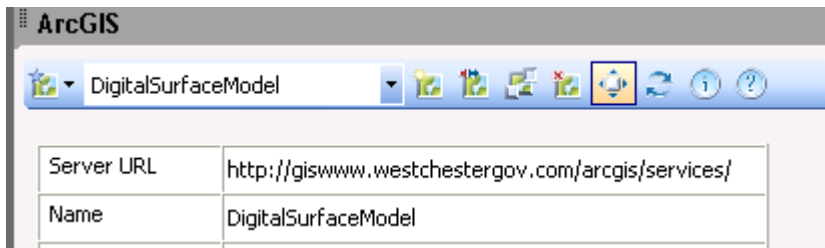
Settings

Map Services displays a panel where you can configure settings for the added maps:



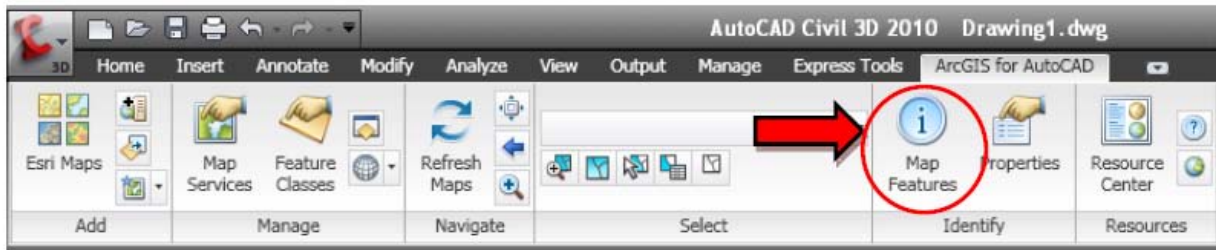
Zoom to extent, send to back, remove, switch to a different service previously added, etc.:



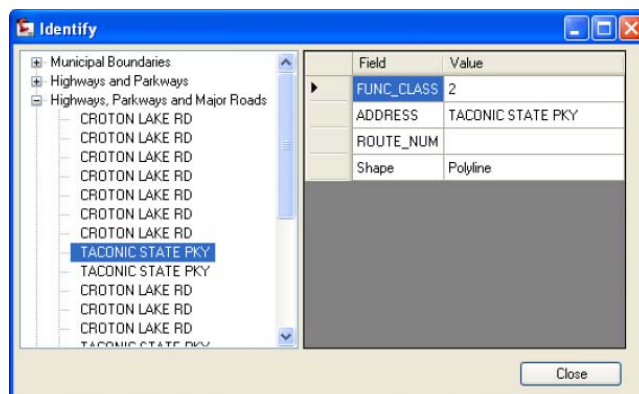


Identify a Map Feature

1. Select the **Map Features** button from the *Identify* tool in the *ArcGIS for AutoCAD* tab.

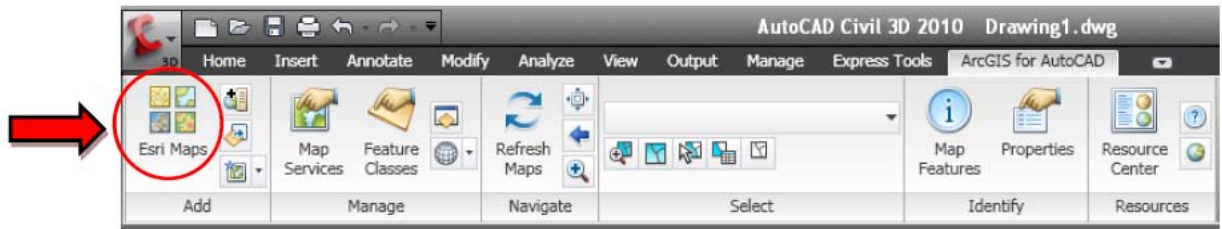


2. Select the first and second corners surrounding the feature of interest.
3. An *Identify* dialog box will list those features within the selected area. Select a feature on the left to display its attributes on the right:

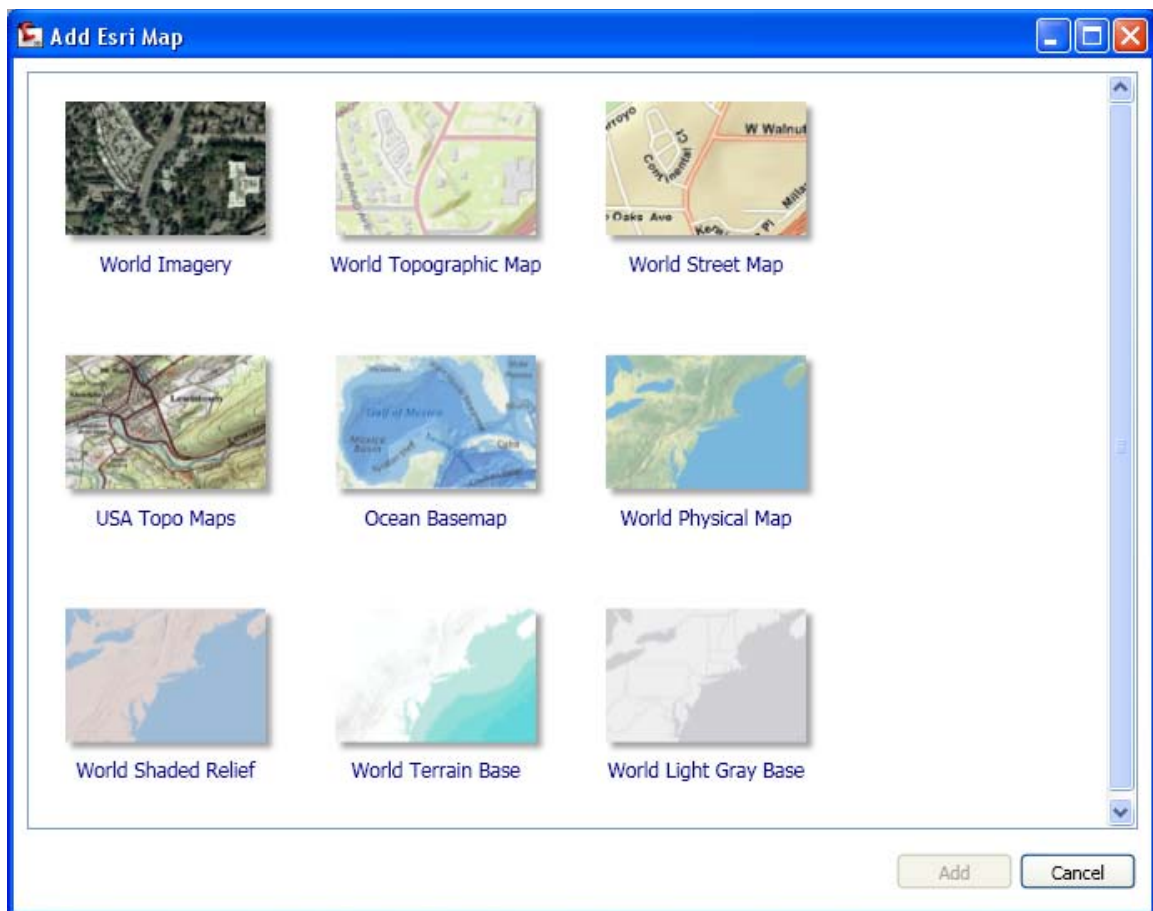


Add an ESRI Map

1. Select the **Esri Maps** button from the *Add* panel in the *ArcGIS for AutoCAD* tab.



2. Select a map and press **Add**.



Help and more information

Visit the Westchester County GIS **YouTube** channel and [watch a short demo](#).

Or visit <http://help.arcgis.com/en/arcgisforautocad/10.0/help/>