

## Mapping Tattoo Parlor Locations in Peekskill

### County GIS Provides Maps as Part of Review Process

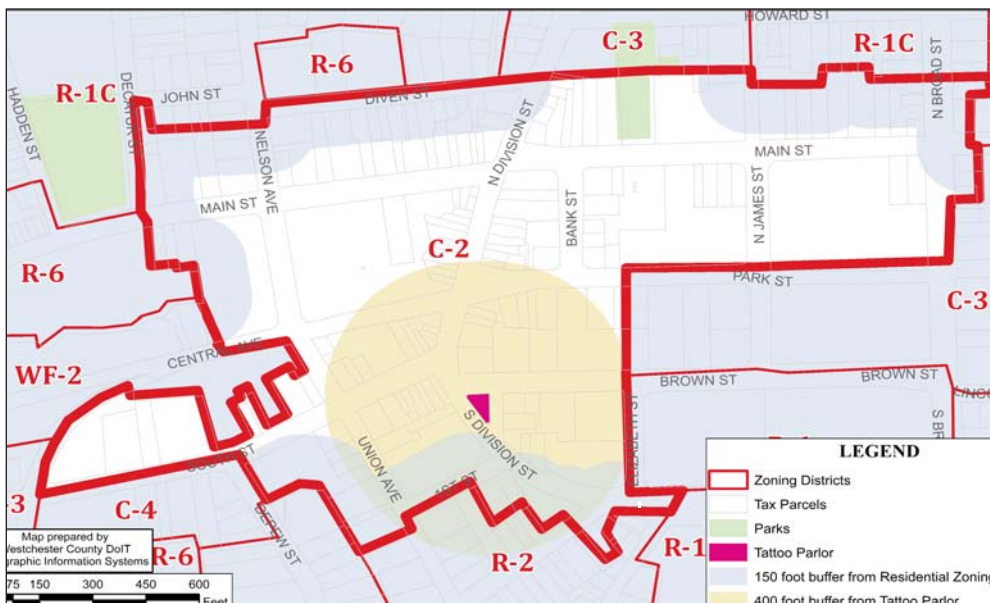
Due to circumstances and challenges unique to that time, the City of Peekskill Common Council discontinued tattoo parlors as a permitted use in the early 1990s. Much has changed over the last twenty years, both in how tattoo parlors are operated and in how tattoos and body art are perceived by the public. Circumstances in the City's downtown have also changed and the Common Council, recognizing this, instructed staff in the city Planning Department to research the best way to reintroduce tattoo parlors subject to appropriate regulations.

Staff drafted regulations which would allow tattoo parlors as a specially permitted use in the Central Commercial Zoning District (C-2). These draft regulations seek to restrict the number and location of tattoo parlors that could conceivably be located and operate in the C-2 District. One such provision would prohibit tattoo parlors from locating closer than 400 feet to one other.

Another provision would require tattoo parlors to maintain a minimum setback of 150 feet from residential zoning districts.

City Planning Department staff were interested in providing a GIS map to the Common Council illustrating how these proposed regulations could work, but lacked the necessary capabilities. As such, the city turned to Westchester County GIS for support in creating a map focusing on the C-2 district in downtown Peekskill highlighting the mandatory 400 - and 150-foot required setbacks based on a hypothetical tattoo parlor location. The map will be used at a Common Council public hearing on January 24.

For more information, please contact Anthony Ruggiero, City of Peekskill Director of Planning, at [Aruggiero@cityof-peekskill.com](mailto:Aruggiero@cityof-peekskill.com) or Cindy Marx, Westchester County GIS Specialist at [llc4@westchestergov.com](mailto:llc4@westchestergov.com).



The image above illustrates a scenario in downtown Peekskill where the parcel located on South Division Street is a proposed tattoo parlor. Based on the new proposed regulations, another tattoo parlor could open in any of the white parcels within Zoning District C-2.

## What's New in Mapping Westchester County?

Westchester County GIS has redeveloped its primary web mapping application, *Mapping Westchester County*, using ArcGIS Server. The application has been improved with many new features including:

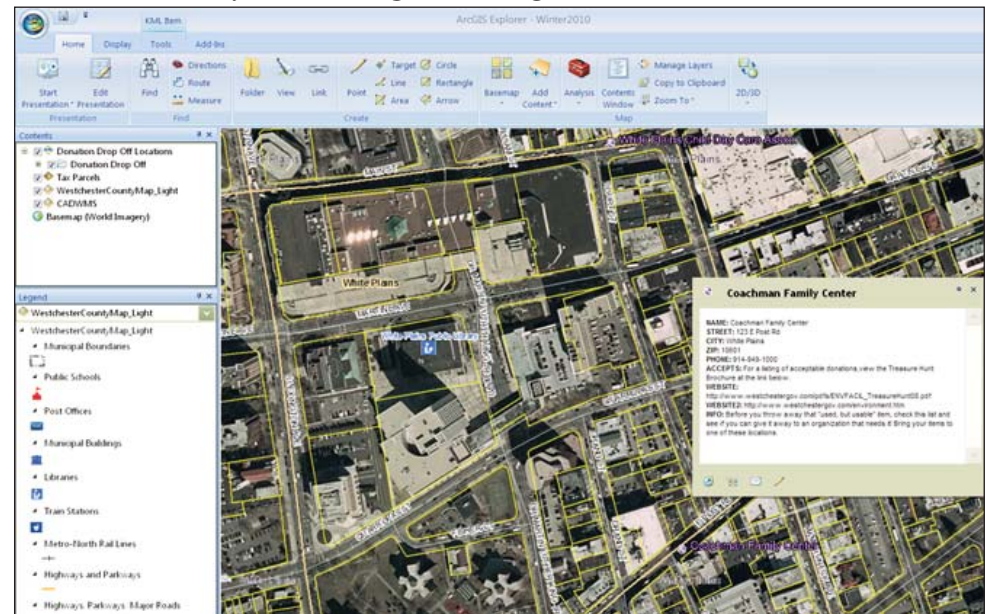
1. Access to an in-house Enterprise Geocoding Service (EGS) which geocodes against tax parcel data to greatly improve address match accuracy.
2. The ability to search by "Place of Interest," such as parks, libraries, and train stations.
3. Leveraging map caching which greatly increases aerial photo and map display performance.
4. Access to real time traffic volume and road conditions along the Bronx River Parkway and other county-maintained roadways based on data feeds from Westchester County Traffic Engineering.
5. Updated data layers such as two-foot contours and tax parcel-based land use maps.
6. Access to aerial photos from 1976, 2004, 2007 and 2009.
7. A new *Be Fit Westchester* submodule locator that provides users with the ability to locate local activities and facilities such as sport fields, playgrounds, swimming pools, fitness centers, and other healthy programs.
8. A series of thematic maps, such as Hydrology Map, Green Map, and Open Space, that have been integrated into the application.

For more information contact Xiaobo Cui at [xxc1@westchestergov.com](mailto:xxc1@westchestergov.com).

## Using ArcGIS Explorer for Data Discovery

ArcGIS Explorer is a free downloadable data viewer which allows users to view and explore geospatial data and products. Using ArcGIS Explorer, users can consume and view a variety of map service formats (WMS, REST, ArcIMS, etc) while overlaying their own local datasets such as GIS Shapefiles, Google Earth KML, or raster files.

This image illustrates an ArcGIS Explorer project consuming two web map services (WestchesterCountyMap\_Light and CADWMS) which provide users access to municipal boundaries, community facility locations, and planimetric datasets. The project also includes an ESRI Shapefile (Tax Parcels), and a Google Earth KML file (Donation Drop Off Locations). Details on the release of a ArcGIS Explorer "starter" project will be posted on the county GIS website <http://giswww.westchestergov.com> in early January. For more information, contact Cindy Marx at [llc4@westchestergov.com](mailto:llc4@westchestergov.com).



## GIS Software Training

During the month of October, Westchester County GIS staff had offered two GIS training courses: Mapping with ArcGIS Explorer (<http://www.esri.com/software/arcgis/explorer>) and Google Earth (<http://www.google.com/earth/download/ge>). The courses focused on the basics of accessing and viewing geospatial data with these two easy-to-use and free programs. In all, 48 County employees attended the trainings. For more information about the software or future training opportunities, contact Cindy Marx at [llc4@westchestergov.com](mailto:llc4@westchestergov.com).

## Oblique Update

County GIS staff is managing a contract with Pictometry International, Inc. to develop countywide oblique imagery and street level photography. Street level photography capture began in November and approximately 90% of the aerial acquisition has been completed. On December 7, municipal staff and IT consultants were introduced to the products and software, and were briefed on the data deliveries. Training sessions will be scheduled for each municipality following delivery and installation. For more information, contact Deborah Parker at [dape@westchestergov.com](mailto:dape@westchestergov.com).

## NYS GIS Nomination

At the fall quarterly meeting of the NYS GIS Coordination Body, Sam Wear was nominated for a three-year appointment to the 18-member statewide committee. Established in 1996, the NYS GIS Coordinating Body "coordinates, promotes and facilitates the development, effective use, and sharing of geographic information" on a statewide basis. Serving as a local government representative, Sam is the longest standing member of the Coordinating Body, having been an original appointment when it was created.

## GIS Day 2010

On Wednesday, November 17, Westchester County GIS hosted its 9th Annual GIS Day at the County Office Building in White Plains. A gallery of 22 posters was displayed in the lobby. Posters demonstrated how GIS is being used in the county, local government, utilities and business sectors. For information on how to participate in GIS Day 2011, please contact Cindy Marx at [llc4@westchestergov.com](mailto:llc4@westchestergov.com).

## GIS for County Field Communications Unit

The Westchester County Department of Emergency Services Field Communications Unit, often referred to as "Field Comm 1", was created to provide mobile communication needs to local fire, EMS and other public safety agencies. Often during a large scale event where multiple agencies and disciplines are working together on managing an incident, it is of critical importance to communicate clear and concise information to all responders involved.

When a local Incident Commander requests "Field Comm 1" to the scene it is dispatched with a minimum of two trained Emergency Communication Operators. The vehicle is fully self-contained with independent power and communication systems. Field Comm 1 can provide voice, data and video surveillance to the Incident Command staff.

Field Comm 1 is also equipped with the latest GIS mapping technology provided by County GIS staff to support any incident. At the request of the Incident Commander, maps and aerial photos can be printed to support on-site operations. Soon the unit will be supplied with the oblique imagery (Pictometry) to further support tactical operations for the emergency services agencies in the county.

In the past, Field Comm 1 has been utilized to support the New York State Empire State Games, Kensico Dam fireworks and music festivals, and has supported multiple drills and exercises in Westchester and New York City. On average the unit is dispatched approximately once a month to support larger scale fires or other emergencies. For more information, please contact Mike Volk in the Department of Emergency Services at [mkv1@westchestergov.com](mailto:mkv1@westchestergov.com) or Ilir Tota, Westchester County GIS at [iat2@westchestergov.com](mailto:iat2@westchestergov.com).



<http://twitter.com/WCGIS>