

Westchester County GIS Leads Cooperative Effort in Internet-based Tax Parcel Mapping Applications

Program is an efficient and cost effective solution to providing access to municipal tax parcel information

Westchester County GIS is currently working with several municipalities in designing browser-based applications which will host and serve municipal tax parcel maps and related information over the Internet. Utilizing ESRI's Internet software, local governments can take advantage of the county's GIS programming and technical expertise to provide tax parcel information on-line. The technology also gives them the ability to print out 8½ X 11 maps. Local governments further benefit by not having to incur the cost of GIS Internet software and related training or establishing dedicated GIS web servers. Like all other Westchester County GIS data, information will be available via a link from local government home pages, 24 hours a day, seven days a week. Because of the flexibility in the application, the municipalities can define the content of information to be made available over the Internet. The user-friendly application is

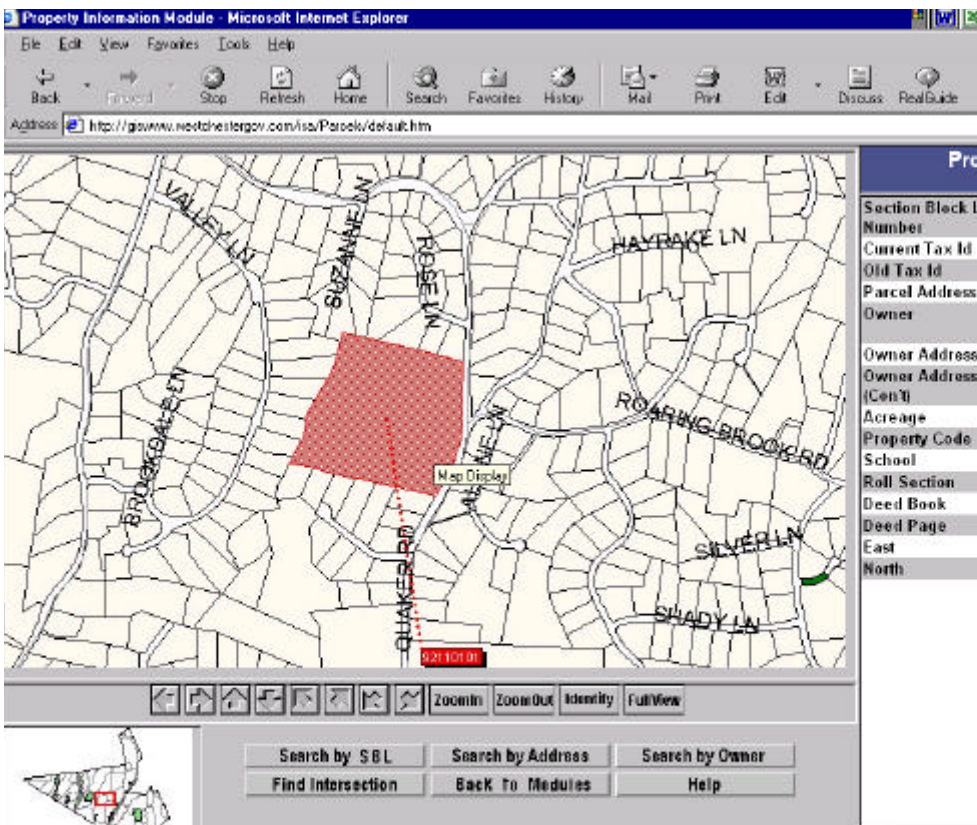
modular in nature offering three basic ways to access and query tax parcel data. Basic functionality of the three modules includes:

1. Property Information Module: Users can search for a property by section, block, and lot number (SBL), parcel address, or owner name. After the matching tax parcel(s) is located in the databases, the parcel and related information are displayed on the screen.

2. Notification Module: In this module, users can search for properties on the same criteria as used in the first module. However, in addition to finding the matching parcel in the database, the application highlights and lists all adjacent/adjoining parcels. Users can then download a mailing list file for the selected parcels, often used for notification efforts for public hearings, zoning changes, etc.

3. Site Selector Module: In the last module, users can enter a complex query based on criteria such as property size, properties only in a particular school district, houses constructed before a certain date, etc. Again, the application displays all properties matching the selected criteria.

While originally designed with ESRI's Map Objects Internet Map Server (MOIMS) software, county GIS staff will be moving the application to ESRI's new ArcIMS software platform. For more information on the tax parcel mapping application, contact Xiaobo Cui at xxc1@westchestergov.com.



Westchester County GIS is utilizing ESRI internet mapping software tools which will be available to local governments. Programs can be modified to show and display a wide range of information.

GIS News

NEARC

The Northeast ARC/INFO Users Group (NEARC) will hold its 15th annual conference in the Grand Killington Resort in Killington, Vermont, October 1-4, 2000. With its theme "Mapping a New Vision," the conference will feature keynote sessions, vendor demonstrations, poster displays, workshops and user presentations. For more information and registration visit the conference Web site at <http://www.northeast-arc.org/>

NYS GIS Conference

The 16th Annual New York State GIS Conference will be held in Liverpool, New York, September 20-21, 2000. With "GIS - Making a Difference" as this year's theme, the conference anticipates over 400 attendees. The conference showcases GIS projects throughout the state at all levels of government, industry, and academia. A wide range of paper presentations is scheduled, including poster sessions, and pre-conference workshops. Leading industry vendors will also be presenting GIS hardware and software related products, as well as professional services. Several Westchester County GIS staff presentations will be made. For more information and registration, visit the conference Web site at <http://www.esf.edu/outreach/conted/conferences/nysgis2000.htm>.

Metadata Training Continues

As part of its "Don't Duck Metadata" grant from the Federal Geographic Data Committee (FGDC), Westchester County GIS, in cooperation with staff from the City of New Rochelle, held its third metadata training session on June 8th at Five Islands Park in New Rochelle. The 90-minute training session, was attended by representatives from government and business. Attendees were briefly introduced to metadata, and its benefits, and given an introduction on how to access and submit metadata forms. The next metadata training is scheduled for September 14, 2000 in Pomona, New York (Rockland County). For more information and registration, visit our Web site at <http://giswww.westchestergov.com> Registration is free.

Westchester County GIS User Group

Following the metadata training on June 8th, the Westchester County GIS User Group met to discuss current local GIS projects and ongoing developments. Over 25 people attended the meeting, led by Rashmi D. Mehta, City Engineer for the City of New Rochelle, with support from Westchester County GIS. The featured speaker was Tom Tiner from Des Lauries Municipal

Continues on Page 3

Westchester County Prepares GIS Implementation Plan for Putnam County, New York

Study Findings Identify GIS Development Opportunities in Several Areas of County Government

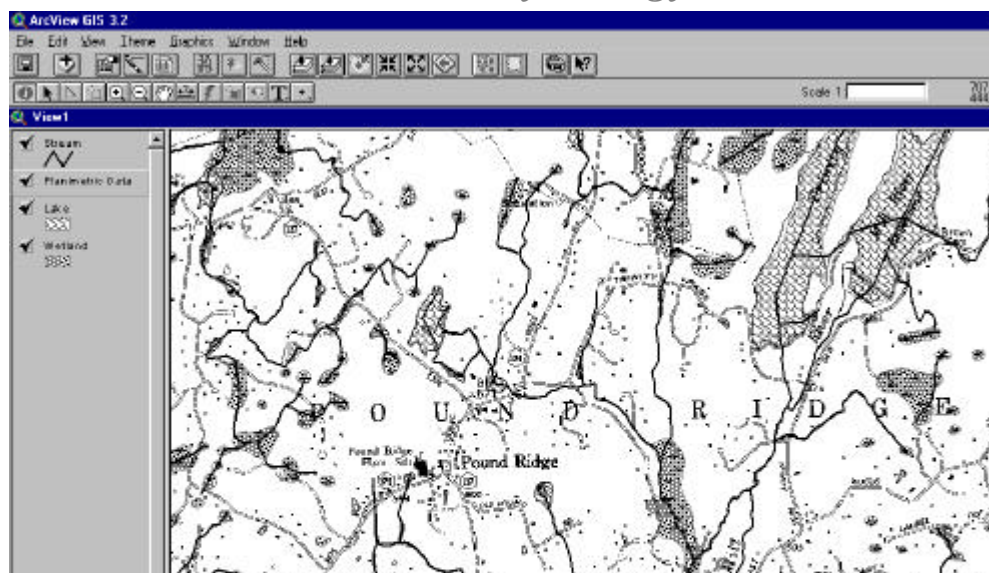
After an extensive three-month study which involved over 22 county departments, nine consultant firms, county municipalities, and discussions with several state and federal agencies, Westchester County GIS has recently completed a user needs assessment and implementation strategy (UNA) for Putnam County, New York. The project was initiated and endorsed by Westchester County Executive Andy J. Spano and Putnam County Executive Robert Bondi. Attempting to leverage the county's already significant investment in spatial data development (tax mapping, 911 addressing and centerline files, as well as environmental health and county planning databases) the study recommends a multi-phased implementation effort which matches both the anticipated fiscal and human resource capabilities of the county. Having used ARC/INFO for over ten years in the Office of Real Property Services, it is anticipated Putnam County will now focus on expanding desktop GIS applications utilizing ArcView in several areas of county government. Spatial data viewers such as ArcExplorer and browser-based applications are also under consideration and design.

"This project is a great example of inter-government cooperation" states John Tully, assistant finance commissioner for Putnam County. "By pooling our resources and working towards a cost effective long-term

plan, both of our counties will benefit in areas of data and application development, data sharing, training and education opportunities, and the design of programs for local municipalities." Westchester County staff identified local governments in Putnam County which are already using ArcView. "We were very honored to be approached by Putnam County to conduct this study, noted County Executive Spano. "Our GIS system is an invaluable tool that provides Westchester County government with vital information. I am confident that when Putnam chooses to implement the plan which has been recommended, the system will provide them with the same ability to enhance their government operations. We look forward to continuing this process with them. I compliment the staff of both counties who worked so hard to prepare this extensive study."

Putnam County anticipates launching initial GIS programs and applications, including GIS training and education course, in the second half of 2000 and will be looking to Westchester County GIS for continued technical support. Westchester County GIS staff was supported on the project by ESRI with staff from their headquarters in Redlands, California. The project was supported by a grant from the New York State Archives Records and Administration (SARA).

New NYSDEC Hydrology Data



Westchester County GIS staff is currently reviewing new hydrology data recently released by NYDEC. The data is an update of NYSDEC hydrology data obtained by the county in the early 1990's. This image combines new vector data with scanned NYSDOT planimetric quadrangle sheets.

Global Positioning System (GPS)

Use Expands in County Departments

Working closely with County GIS staff, Westchester County Department of Public Works (Traffic Engineering) has recently contracted with Greenman - Pedersen, Inc. (GPI) to develop a sign inventory for the Bronx River Parkway (BRP) utilizing GPS technology.

GPI services will include the development and implementation of an electronic sign management system for the collection and management of the approximate 750 traffic signs located along the 13.2 mile (plus 4.5



miles of ramps) BRP. Electronic sign management systems typically consist of field-based computers for data collection and an office-based computer for management of the database. The system being delivered to Westchester County will include pen-based computers containing CarteGraph SIGNview software, a Kodak digital camera and a Trimble GPS Pathfinder Pro XRS receiver. The sign database will include the sign's individual geographic coordinate, and digital image, as well as related information (type, installed, maintenance, etc.). For more information on the Bronx River Parkway Sign Inventory Project, contact Kevin Roseman at kmr5@westchestergov.com.

GPS has also been recently used by the Departments of Planning and Parks, Recreation, and Conservation (PRC). Laura McGinty, who leads GPS development within the GIS section, assisted staff from the Dept. of Planning in mapping water sampling points along the Amawalk River (*adjacent photo*) associated with the Croton Watershed project. GPS was also utilized in creating new and accurate trail maps in Sprain Ridge Park with staff from PRC and in the mapping of manholes with the county's surveying crew. For more information on the county's expanding GPS program, contact Laura McGinty at lam7@westchestergov.com.

Westchester County Initiates Development of High Accuracy Digital Base Map

Ambitious 16-month Project will Include Delivery of Digital Color Orthophotography and 100' Scale Planimetric Data

After a nationwide search of industry leading photogrammetric mapping firms, Westchester County selected Analytical Surveys, Inc. (ASI) of Indianapolis, Indiana in late March of this year to provide photogrammetry, ground control, and base mapping services in support of the county's first-ever comprehensive base mapping project. After the contract signing, ASI was able to obtain leaf-off photography on April 14th and 15th.

Consideration for development of a county-wide base map was initiated in 1998 by the formation of the Westchester GIS Task Force commissioned by County Executive Andy J. Spano. The county executive then appointed former county Planning Director Peter Q. Eschweiler as Task Force chair-

man. The Task Force, which includes representatives from county and local government, professional societies, utilities, and industry, then contracted with Plan Graphics, Inc., to conduct a needs assessment and to prepare technical specifications for the basis of the base mapping Request For Proposals (RFP). ASI was selected over six other proposals by a panel of six reviewers, representing local and county government, and the Westchester GIS Task Force. Assisting in the vendor selection and the database design was Applied Geographics, Inc.

In all, over 35 features are to be captured with the project, which results in over 2,400 tiles of data and an estimated 214 gigabytes of data.

GIS News (continued from page 2)

Solutions, a Massachusetts company and ESRI business partner. Des Lauries specializes in local government GIS software and consulting solutions throughout New England. In addition, Westchester County GIS staff gave a brief presentation taking a look at ESRI's ArcExplorer software, which allows users to display, query and geocode a wide variety of standard data sources.

Internet County and State Roads and Parks

A new interactive GIS map, County State Roads and Parks, has been published at Westchester County's GIS web site. The map shows county and state roads, major county and state facilities, county and state parks. Users are also able to zoom in/out, pan, and print a map using a browser. To see the map, please visit the Westchester County GIS web site at <http://giswww.westchestergov.com>.

GIS List Server Now Available!

A Westchester County GIS List Server (WCGIS-L) is now available! Supported by Westchester County GIS, GIS-L provides a forum for GIS users throughout the county to communicate with each other to discuss current GIS issues, share ideas and technical solutions, and be brought up-to-date on county-wide GIS initiatives. New subscribers can join by sending an e-mail to listserv@www.westchestergov.com and typing in the message: subscribe wcgis-l.

GIS Supports New Fire District Dispatching System

Westchester County GIS staff continues to provide support to the Department of Emergency Services for the implementation of a new countywide fire and emergency medical services (EMS) dispatching system. After a nationwide search, Westchester County's review committee selected Intergraph Public Safety (IPS) over several other competing dispatching system solutions. GIS staff have been actively involved in several early phases of the implementation effort including the updating of fire and EMS district boundaries, verifying and updating existing street centerline file (NavTech) relative to positional accuracy and completeness, identifying problem areas relative to address ranges, and moving data from the county's existing ARC/INFO database into the Intergraph-based IPS environment. Additional ArcView-based GIS applications are expected to be developed for the new Department of Emergency Services. For more information on GIS and the new emergency dispatch system, contact Greg Sullivan at (914) 285-3371 or e-mail ggs5@westchestergov.com.

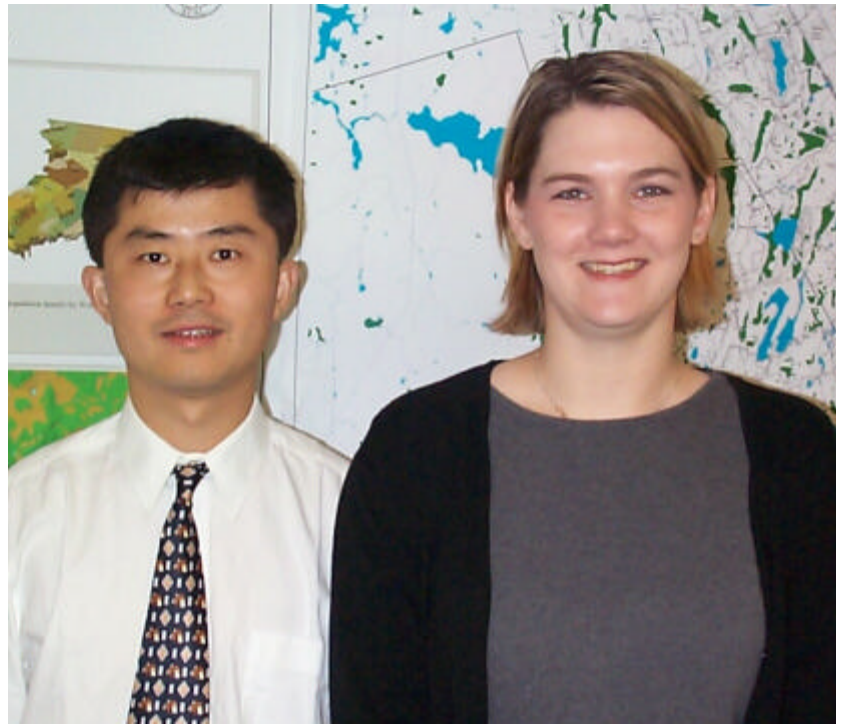
Westchester County Geography Trivia

Part I: Place Names

Many people associate themselves with a "place" or "neighborhood" where they live as opposed to the official name of their municipality (village, town, or city). Such locations are commonly known to map makers and cartographers as "place names." *Place names* normally have significant historical meaning to local residents and were often the first common name used to identify a particular area of the county. Today, *place names* are used in conjunction with postal zip codes, fire districts, and other units of government. However, there are many other commonly used *place names* in Westchester County that are simply that - just *places*.

Below is a list of a few commonly accepted *place names* throughout Westchester County which appear on many types of maps (both electronic and hardcopy). The first person to correctly associate the *place name* with its proper village, town or city will win the book "Getting to Know Desktop GIS" courtesy of ESRI. All entries must be sent either email or fax to Ana Hiraldo at ah2@westchestergov.com / 914-285-3269. The winner will be announced in our next newsletter. Good Luck!

Vista	Whitehall Corners	Greystone
Wykagyl	Van Cortlandville	Millwood
Eastview	Crompond	Banksville
Salem Center	Scotts Corners	Fleetwood
	Philipse Manor	



New GIS staff. Both Carrie Keneally and Tong Zhou joined Westchester County GIS in April. Carrie previously worked with the Lamont-Doherty Center for International Earth Science Information Network and received her B.A in geography from University of Albany. Tong spent the past two-and-a-half years working with North Delta Planning Development District (Mississippi) after receiving his M.A. from Clemson University in 1997.

Visit our Web site at <http://giswww.westchestergov.com>



DEPARTMENT OF INFORMATION TECHNOLOGY

908 Michaelian Office Building
148 Martine Avenue
White Plains, NY 10601

Articles and graphics in this newsletter prepared by: Xiaobo Cui., Ana Hiraldo, Laura McGinty, Greg Sullivan, Sam Wear and Tong Zhou

<http://www.westchestergov.com>

Westchester County GEOGRAPHIC INFORMATION SYSTEMS

is published by the Westchester County Department of Information Technology

Andrew J. Spano, County Executive

Dr. Norm J. Jacknis, Chief Information Officer